

### 8 SERIES MULTIMAG®

R



8310

- 1500 lbs holding force per magnet
- Adjustable keyhole mounting bracket for simplified installation
- Built-in time delay (instant release with adjustable relock, programmable from 0-110 seconds)
- Field selectable voltage – 12/24VDC
- Convenient plug-in wiring terminals
- Easy-access wiring cavity
- Stabilizing 4-bolt “Drop Stop” mag mounting (8-bolt for 8320)
- MOV surge protection
- No residual magnetism
- Low energy consumption
- Hardened steel armature nut
- Self-drilling tek™ fasteners

**8310**

- Single outswinging interior or perimeter doors
- Size: 1-5/8” x 2-7/8” x 10-1/2”

**DSS OPTION - DOOR STATUS SENSOR**

- Ceramic magnet-reed type sensor for remote indication of door status (opened or closed, independent of local power); magnet embedded in armature for tamper resistance; reed switch inside electronic housing cavity for easy access



8320

**8320**

- Double outswinging interior or perimeter doors without mullion
- Size: 1-5/8” x 2-7/8” x 21”

| MFG #       | DESCRIPTION                      | FINISH   | EZ #   |
|-------------|----------------------------------|----------|--------|
| 8310 28     | Standard Mag Lock                | Aluminum | 028497 |
| 8310 DSS 28 | Mag Lock With Door Status Switch | Aluminum | 074352 |
| 8320 28     | Double Standard Mag Lock         | Aluminum | 029322 |

### MINIMAG® & MICROMAG®

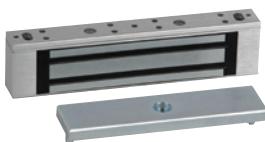


8360

- For Interior use only
- Brushed anodized aluminum finish
- Low energy consumption
- Field-selectable voltage 12/24VDC
- MOV surge protection
- Hardened steel armature nut
- No residual magnetism
- Low profile design

**8360 - MORTISE MINIMAG®**

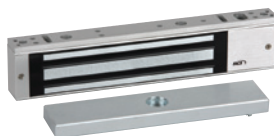
- Remote lock status - RLS
- Holding force: 750 lbs
- 1-1/16” x 1-1/2” x 9”



8371

**8371 - SURFACE MINIMAG®**

- Holding force: 750 lbs
- 1” x 1-7/8” x 9-3/8”



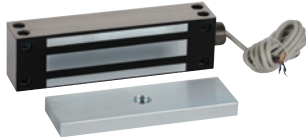
8375

**8375 - SURFACE MICROMAG®**

- Holding force: 250 lbs
- 13/16” x 1-1/2” x 6-17/32”

| MFG #          | TYPE     | FINISH   | EZ #   |
|----------------|----------|----------|--------|
| 8360 28        | Sliding  | Aluminum | 072973 |
| 8371 28 12/24D | Swinging | Aluminum | 088106 |
| 8375 28        | Swinging | Aluminum | 062849 |

### 8380 GATEMAG® MAGNETIC GATE LOCK



- Up to 1500 lbs holding force
- No residual magnetism
- Weather-resistant stainless steel housing
- Versatile face or bottom mounting
- Built in RLS (remote lock status)
- Field selectable voltage 12/24VDC
- Throughbolt mounting
- 6-1/2' wire cable
- Conduit fitting 1/2" inside diameter, 3/4" outside diameter
- MOV surge protection
- Lifetime warranty
- cULus Listed

| MFG # | SIZE                     | EZ #   |
|-------|--------------------------|--------|
| 8380  | 1-3/4" x 2-1/2" x 8-7/8" | 080081 |



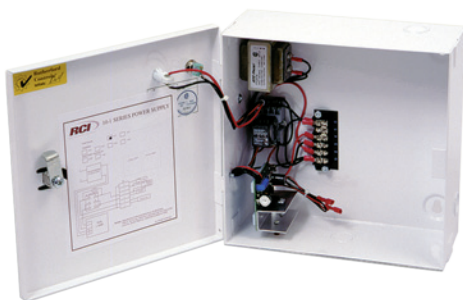
### ELECTRIC CABINET LOCK



- Field selectable fail locked or fail unlocked assembly
- Field selectable dual voltage 12/24VDC operation
- Plated (rust-resistant) self adjusting steel locking pin assembly
- 440 lbs holding force
- Low energy consumption (184mA @ 12VDC, 90mA @ 24VDC)
- Includes hardware kit
- For sliding or swinging cabinet doors
- Elongated holes on tongue for adjustable mounting

| MFG # | DESCRIPTION           | SIZE                      | EZ #   |
|-------|-----------------------|---------------------------|--------|
| 3513  | Electric Cabinet Lock | 1-1/8" x 1-3/16" x 2-7/8" | 100007 |

### 1 AMP POWER SUPPLIES FOR ELECTRIC STRIKES

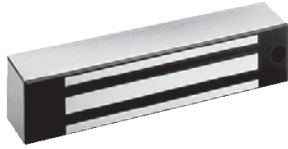


- Instant unlock upon AC failure
- Filtered & regulated DC output
- Short circuit protection
- Adjustable output voltage
- Fuse protection
- Optional battery backup and time delay
- UL listed
- Size: 10-1/4" x 10-1/4" x 4"

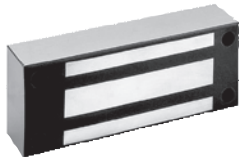
| MFG #     | DESCRIPTION           | OUTPUT | EZ #   |
|-----------|-----------------------|--------|--------|
| 1012NR 1A | No Relay Power Supply | 12VDC  | 069088 |
| 1024NR 1A | No Relay Power Supply | 24VDC  | 069089 |



**32 & M62 SERIES MAGNETIC LOCKS**



**32**



**M62**

- Operating temperature: -40 to +60C
- Warranty: MagnaCare lifetime replacement warranty
- Patented instant release circuit, no residual magnetism
- UL listed
- Fully sealed electronics, tamper proof and weatherproof
- Finish: Brushed stainless steel
- Ten feet of jacketed, stranded conductor
- Automatic dual voltage, no field adjustment required

**32**

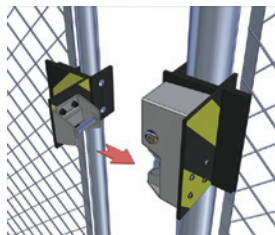
- Holding force: 600 lbs
- Current draw voltage: 300mA at 12VDC; 150mA at 24VDC
- Size: 8"L x 1.88H" x 1.5"D

**M62**

- Holding force: 1,200 lbs
- Current draw and voltage: 250mA at 12VDC; 125mA at 24VDC
- Size: 8"L x 2.9"H x 1.75D"

| MFG #        | HOLDING FORCE | EZ #   |
|--------------|---------------|--------|
| M32 24VDC    | 600 LBS       | 028116 |
| M62 12/24VDC | 1200 LBS      | 013349 |

**2000 LBS HOLDING FORCE GATE LOCK**



- 2000 lbs holding force
- Operates under pre-load up to 100 lbs
- Automatic dual voltage - no field adjustment required
- Fail secure convertible to fail safe
- Manual key override (right or left hand)
- Self-aligning receiver (+/- 1/2" horizontally) helps compensate for gate misalignment and sag
- Tamper proof cast aluminum housing
- Latch status monitor switch (SPDT)
- Heavy wall 1/2" inside diameter threaded steel coupling
- Hardened steel latch
- Surface mount
- Black krinkle powder coated finish
- Holding force: 2000 lbs
- Current draw and voltage:
  - » 12 volts initial (peak): (~1.0 second) at 870mA - reduced: 290mA
  - » Power consumption: 3.5 watts
  - » 24 volts initial (peak): (~1.0 second) at 720mA - reduced: 170mA
  - » Power consumption: 4.1 watts
- Operating temperature: -50°C to +75°C

| MFG # | HOLDING FORCE | EZ #   |
|-------|---------------|--------|
| GL1   | 2000 LBS      | 086794 |