

Night Radian Remote R/C Light Controller

(Jan 28 2019)

By J.BAUER Electronics

This R/C Remote light controller interface controls the 3 buttons in the Night Radian light controller. It also hooks into the +5Volt supply to the Radian light controller which allows you to turn off the light completely.

All this is done with two (2) spare TX/RC channels. Channel #1 is on a 2 position (preferably momentary) switch and Channel #2 is on a 3 position switch.

FUNCTIONS

With the 3 position switch you choose which button you wish to operate. With the 2 position switch quickly (less than 1 second) toggling between positions will activate that chosen button.

The 3 positions are:

UP=	Mode+
CENTER=	Speed
DOWN=	Mode-

If at any time you wish to turn the lights completely 'OFF" or 'ON" then use the 2 position switch but toggle slowly (more than 3 seconds). Each time you slowly toggle the 2 position switch the lights will go 'OFF" then 'ON' then 'OFF' etc.

If only one (1) channel is available it should be connected to CH #1 on the RLC Controller PCB.

This will allow you to only control the Mode+ button to cycle through all the Modes with a quick toggle of the 2 position switch.

You can still turn the entire lights 'OFF' and 'ON'

SWITCH PULSE TIMING POSITIONS

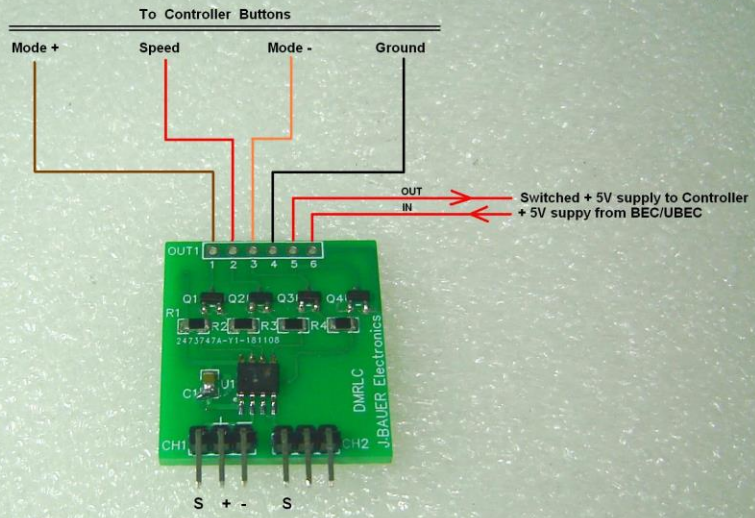
Channel #1

UP	=Inactive	=1000us
Down	=Active	=2000us

Channel #2

UP	=Active	=1000us
Center	=Active	=1500us
Down	=Active	=2000us

"RTL"



Night Radian Remote TX/RX Light Controller
by
J.BAUER Electronics
www.laserbeelpm.com