

Rabbit Anti-DOG-1 [EP332]: RM0367

Intended Use: For Research Use Only

Description: DOG1 (discovered on GIST 1), a cell-surface protein of unknown function, is expressed strongly on the cell surface of GISTs and is rarely expressed in other soft tissue tumors. Among GIST cases with c-Kit mutations, the DOG1 antibody identified 11% more cases than a c-Kit antibody. DOG1 identifies the vast majority of both c-Kit negative and PDGFRA mutated GIST cases that may still benefit from imatinib mesylate (Gleevec), an inhibitor of the kit tyrosine kinase. In addition, DOG1 immunoreactivity is seen in fewer cases of mesenchymal and epithelial tumors, and melanomas when compared with c-Kit. The use of this highly-sensitive and specific novel marker should increase the accuracy of GIST diagnosis.

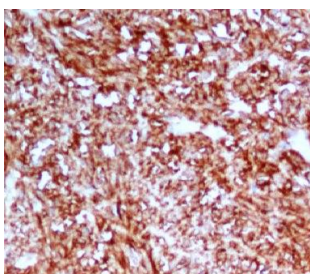
Specifications

Clone: EP332
 Source: Rabbit
 Isotype: IgG
 Reactivity: Human
 Localization: Membrane, cytoplasm
 Formulation: Antibody in PBS pH7.4, containing BSA and $\leq 0.09\%$ sodium azide (NaN₃)
 Storage: Store at 2°- 8°C
 Applications: IHC
 Package:

Description	Catalog No.	Size
DOG-1 Concentrated	RM0367	1 ml

IHC Procedure

Positive Control: Breast carcinoma, GIST
 Concentrated Dilution: 50-200
 Pretreatment: Citrate pH6.0 or EDTA pH8.0, 15 minutes using Pressure Cooker, or 30-60 minutes using water bath at 95°-99°C
 Incubation Time and Temp: 30-60 minutes @ RT
 Detection: Refer to the detection system manual
 * Result should be confirmed by an established diagnostic procedure.



FFPE human GIST stained with anti-DOG-1 using DAB

References:

1. Small-molecule activators of TMEM16A, a calcium-activated chloride channel, stimulate epithelial chloride secretion and intestinal contraction. Finkbeiner WE, et al. FASEB J. 2011-11-01.
2. Gastrointestinal stromal tumor with structures resembling intracytoplasmic lumina. Xu X, et al. Ultrastruct Pathol. Oct;34(5):301-6, 2010.
3. Evaluation of the Novel Monoclonal Antibody Against DOG1 as a Diagnostic Marker for Gastrointestinal Stromal Tumors. Abdel-Hadi M, et al. J Egypt Natl Canc Inst. Sep;21(3):237-47, 2009.
4. Monoclonal antibody DOG1.1 shows higher sensitivity than KIT in the diagnosis of gastrointestinal stromal tumors, including unusual subtypes. Bernadette Liegl, et al. The American journal of surgical pathology. 12: 33(3):437-46, 2008.

Doc. 100-RM0367
Rev. A