

MASONIC MASSACRES

MARKINGS OF THE MASONIC SATANIC BLOOD RITUAL MASSACRES

The purpose of this illustration is to highlight several key and unique properties of the time and place of the 16 Century Cinema Satanic massacre ritual. This illustration is not to implicate the Masons or those that architected the regional geographical patterns of the area. But there is a definite signature of what has been used in the past by such secret societies that incorporate 'time and place' symbolism to geographical markers. It appears that there are numerical associations now clearly linked to the Columbine Massacre of April 20, 1999 to the Aurora shooting of July 20, 2012, exactly 13 years and 3 Months apart. These 2 geographic spots will be analyzed for occultic and celestial associations. Based on the research of what the NWO Airport has, it appears that the USA, spiritually is at such a dark point that the *Spirit of Egypt* has finally been able to publicly sojourn throughout its 'High Places' to invoke what the New World Order will be about; bondage. A numerical study of 430 will show that it is a Spirit associated with 'bondage' and captivity as a parallel to what the Israelites had to go through during the times of the *Pharaohs*.

OCCULTIC SIGNATURES

It appears that the geographic layout of the region to include the Columbine Massacre and now the Aurora Massacre are directly associated to each other by the 20th day. The NWO Airport based on Latitude and distance degrees compose a truncated Masonic Square and Compass. It is obvious whose signature this belongs to. A lot of bloodletting has been required to prepare the NWO Airport underground endeavors. Many have leaked info that is pertaining to Fallen Angel/Alien genetic manipulation and Satanic ritual sacrifices that are occurring at such places.

AURORA

This word in Spanish means the 'DAWN' as in the breaking forth into the LIGHT from darkness. It would seem obvious that the occult staged the massacre bloodletting as the night turned into the Dawn; perhaps a dawn of to 'New Age' to come. From the Columbine to the Aurora shooting = 13 Years.

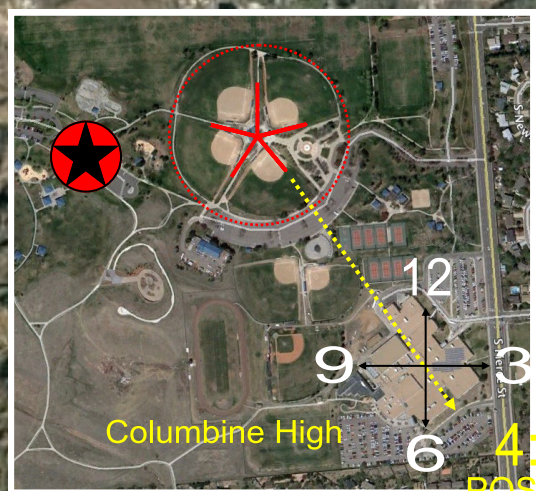
The Holy Order of the Golden DAWN (AURORA).

It is interesting how this logo of the Secret Society depicts the same mall layout.

Columbine Angle + Aurora Angle
 $62^\circ + 39^\circ = 101$ Degrees

The 39° Angle of Aurora to NWO Airport
 = 39° Latitude of Airport

The difference between Aurora Latitude to Columbine
 = Sum of 39° twice



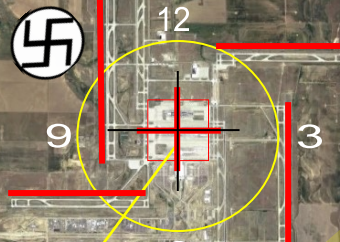
Columbine High
 4:30 POSITION

HEAD

COLUMBINE
 APRIL 20, 1999
 (4-20)

39.36 Latitude

Spring Equinox



AIRPORT
 MARCH 20, 1994
 New World Order
 (3-20)

4:30 POSITION

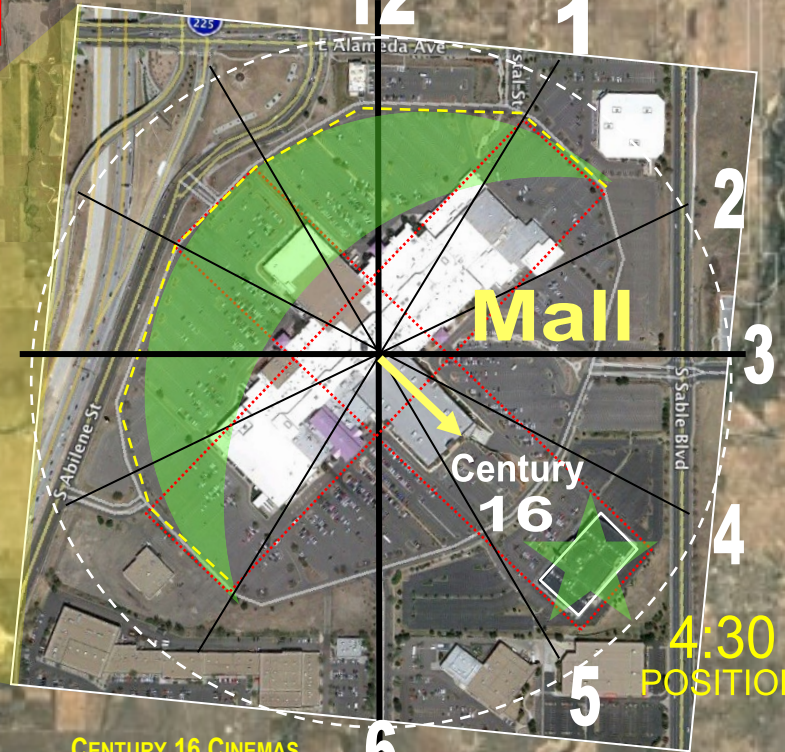
39° HEADING

AURORA
 JULY 20, 2012
 16 Cinemas
 (6-20)

Truncated Square and Compass

13 nautical miles

13 miles



CENTURY 16 CINEMAS
 4pm + 5pm + 4:30pm =
 [4 + 5 = 9] + [4 + 3 = 7]
 9 + 7
 16

4:30 POSITION

THE NUMBERS 4:30 AND 16

It appears that the shopping mall grid/layout is very peculiar to the point that it can configure a clear Islamic *Star and Crescent* pattern of the Moon Goddess Allah. It was designed with specific angels to have the 16 Century building at 4:30pm. Incidentally, Islam expanded the most in the 16th Century. Spiritually, 430 could allude to the number of years Israel was to be in Egypt. Or is this the lifespan of the USA since the Pilgrims? The Colony of Roanoke was established in 1585.

Google Earth