



Westinghouse

Stainless Steel Electric Water Heater

BUILT
TO LAST
LONGER

No Anode
Rods Needed

Lightweight
and Durable



Made in the USA

www.westinghousewaterheating.com



INDUSTRY
BEST
LIFETIME
WARRANTY
(RESIDENTIAL)

10 YEAR
WARRANTY
(COMMERCIAL)

40, 52, 80,
100 & 115
Gallon Tanks



Stainless Steel Electric Water Heater

THERMOSTAT AND HIGH LIMIT CONTROLS:

Residential temp: min 110° F max 150° F
Commercial temp: min 120° F max 180° F

HOT WATER CONNECTION:

Outlet connection on the top
of the tank (with built in Heat Traps)

THE FINEST PROTECTION:

Laser welded through a concentrated
heat source producing high quality, long
lasting, 316L stainless steel tank construc-
tion (lightweight) - Superior corrosion
resistance, eliminates the need for anode
rods, protects against harsh water
conditions for a lifetime of durability
against leaks - Fantastic Limited Warranty

MINIMAL HEAT LOSS:

Heavy-duty insulation

STAINLESS STEEL & INCOLOY ELEMENTS:

Low watt operation; Stainless steel screw
plugs; Increases corrosion resistance for
extended, longer element life



STANDARD FEATURES

- Stainless Steel Tank
- Heavy Duty Insulation
- Electrical Connection Box
- Limited LIFETIME Warranty
for Residential Unit
(10 year warranty if not registered online)
- Limited 10 year Warranty
for Commercial Unit
(5 year warranty if not registered online)

IN THE BOX

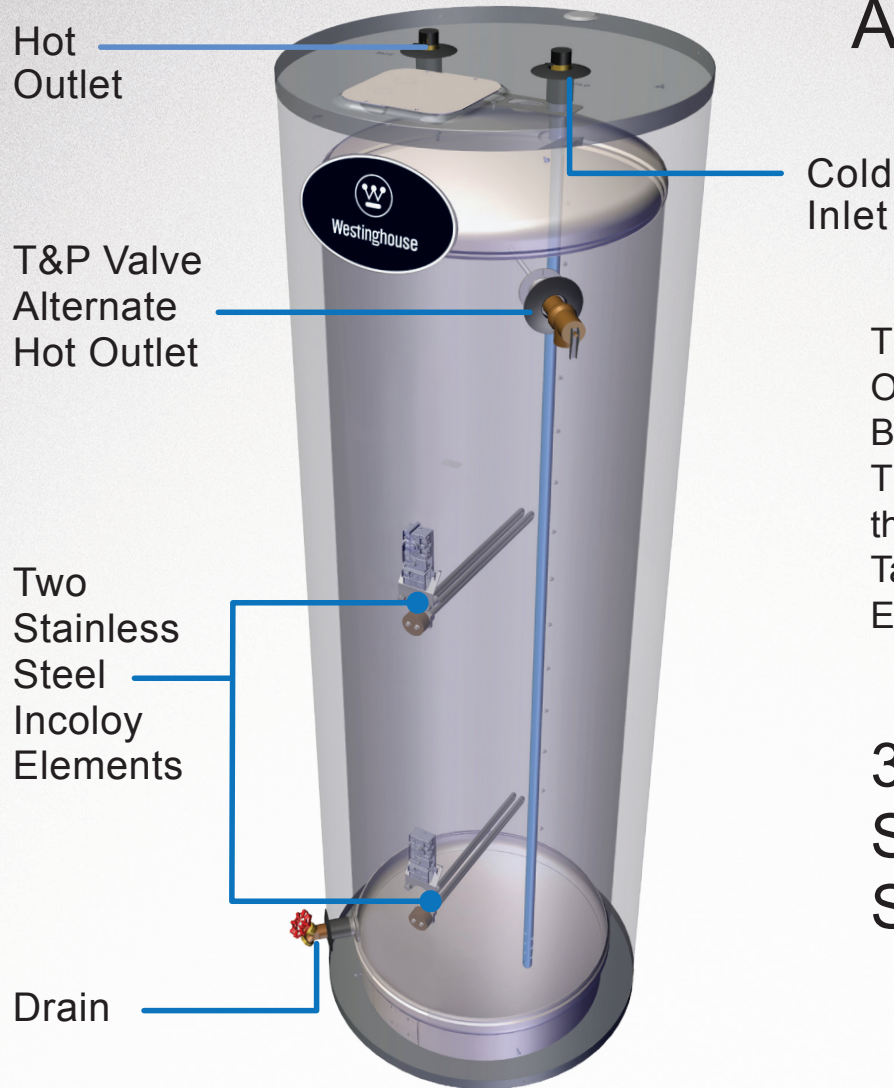
- T & P Relief Valve
- Installation Manual
- Brass Full Port Drain Valve

**NO ANODE
RODS NEEDED**
RESISTS
SCALE BUILD UP
**LIGHT
WEIGHT**

THE WESTINGHOUSE ELECTRIC: STAINLESS STEEL WATER HEATER

The Westinghouse Electric Water Heater combines high quality stainless steel construction and energy efficient operation, providing long draws of hot water without consuming large amounts of energy. A cleverly designed water connection directs cold water to the heating element near the bottom of the tank to minimize the mixing of cold and hot water. Durable components, low standby heat losses, high recovery rates, and the industry's strongest warranty make the Westinghouse Electric Water Heater an ideal choice for electric water heating needs.

A Closer Look



The Inlet & Outlet have Built in Heat Traps, Keeping the Heat in the Tank for Greater Efficiency

316L Stainless Steel Tank

Our Components are Made of Durable Materials:

Inlet and Outlet Nipples Constructed of Durable Brass

Stainless Steel Incoloy Elements

316 L Stainless Steel Tank Construction

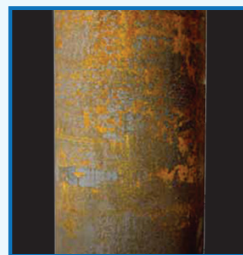
Made with High Grade 316L Stainless Steel Materials

The Advantages

Stainless Steel VS Glass-Lined



Westinghouse's Stainless Steel Tank
Lightweight

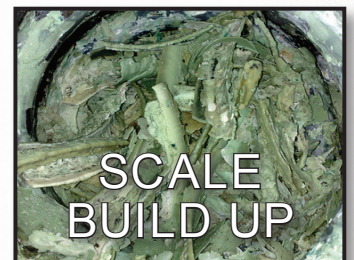


Top Competitor's Glass-lined Tank
Very Heavy

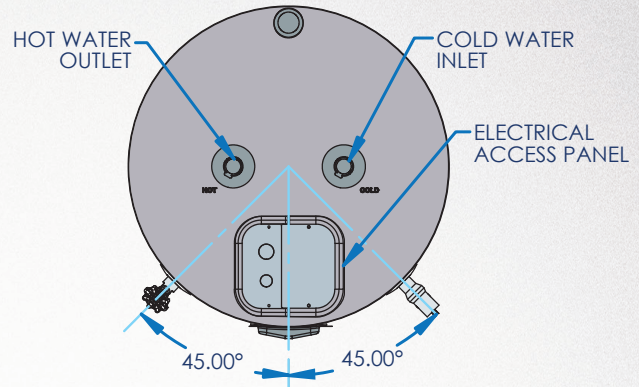
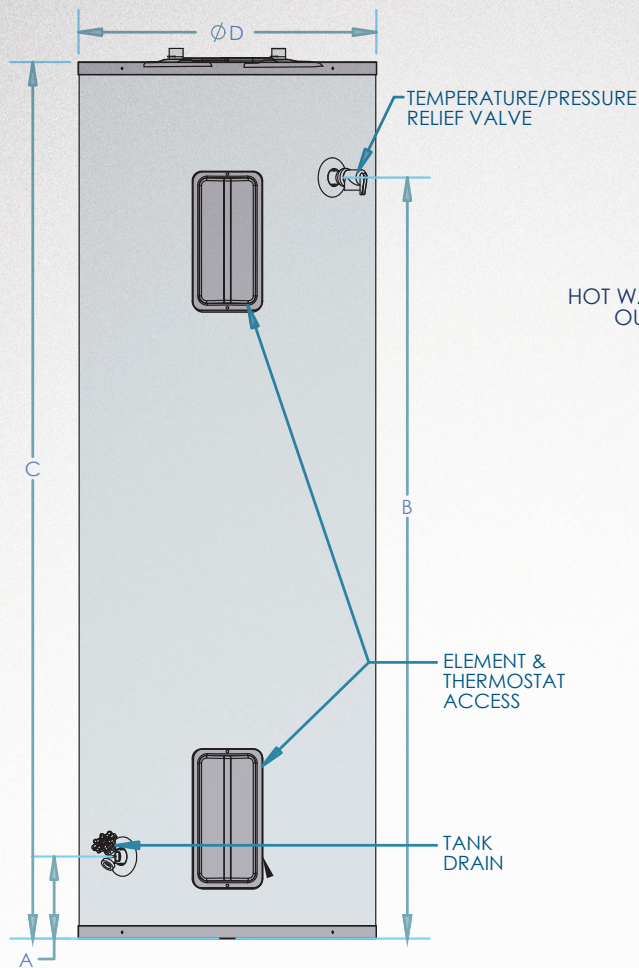
Minimizes Scale Build Up
Prolongs Tank Life
No Need for Anode Rods
Lightweight Construction

NO Anode Rods Needed!

All coated tanks require anodes to delay the inevitable corrosion and tank failure. The average residential water heater lasts about 13 years. The Westinghouse stainless steel tanks will outlast any coated steel tank in the market.



Dimensions & Specifications



The Inlet & Outlet have Built in Heat Traps, Keeping the Heat in the Tank for Greater Efficiency

• Limited LIFETIME Warranty for Residential Unit (10 year warranty if not registered online) • Limited 10 year Warranty for Commercial Unit (5 year warranty if not registered online)

SPECIFICATIONS AND DIMENSIONS						WATER TEMPERATURE RATINGS		
Models	Gal.	A	B	C	D	Minimum Delivered Temp.	Maximum Delivered Temp.	High Temp. Limit
WER040C2X045	40	5.75"	46"	54.25"	19.5"	110°F 43.3°C	150°F 65.5°C	170°F 76.6°C
WER040C2X055								
WER052C2X045	52	5.75"	58.25"	66.75"	19.5"			
WER052C2X055								
WEC080C2X045	80	6.5"	60"	69"	23.25"	120°F 48.8°C	180°F 82.1°C	200°F 93.3°C
WEC080C2X055								
WEC100C2X045	100	7.25"	52"	61"	27"			
WEC100C2X055								
WEC115C2X045	115	7.25"	60.25	70.5"	27"			
WEC115C2X055								

Residential Models	Wattage	Voltage	Safety Listing	First Hour Rating	Recovery @ 90°F Rise	Energy Factor	Shipping Weight
WER040C2X045	4500	240	UL174	59 Gallons	20 Gallons	.95	104 lbs
WER040C2X055	5500			64 Gallons	25 Gallons		
WER052C2X045	4500	240		66 Gallons	20 Gallons	.94	118 lbs
WER052C2X055	5500			71 Gallons	25 Gallons		
Light Commercial Models	Wattage	Voltage	Safety Listing	First Hour Delivery	Recovery @ 90°F Rise	Thermal Efficiency	Shipping Weight
WEC080C2X045	4500	240	UL1453	84 Gallons	20 Gallons	98%	151 lbs
WEC080C2X055	5500			89 Gallons	25 Gallons		
WEC100C2X045	4500	240		87 Gallons	20 Gallons	98%	206 lbs
WEC100C2X055	5500			92 Gallons	25 Gallons		
WEC115C2X045	4500	240		105 Gallons	20 Gallons	98%	224 lbs
WEC115C2X055	5500			110 Gallons	25 Gallons		

Energy Factor based on D.O.E. (Department of Energy) test procedures. Heaters furnished with standard 240 volt AC, single phase non-simultaneous wiring.

®, WESTINGHOUSE are trademarks of Westinghouse Electric Corporation. Used under license by HTP, Inc. All Rights Reserved.

06/2015 • MKTLIT-74