

“A plan to assist citizens in the revitalization and rehabilitation of property within the specified boundaries of Greeley, Kansas.”

## A Property Tax Rebate Program...

The Neighborhood Revitalization Program is designed to promote improvements to eligible properties within the designated plan areas of Greeley. Property owners within these areas who make improvements to their residential or commercial properties will be eligible to receive rebates on their property taxes from the City of Greeley, Anderson County, and USD 365.

### Why is this rebate program limited to the “plan areas”?

To encourage new construction and rehabilitation of Greeley’s downtown commercial and industrial areas, and nearby residential neighborhoods within the city. The areas outlined in this program have been determined by the governing body of the City of Greeley to meet the criteria as “Neighborhood Revitalization Areas” under Kansas law.

### To qualify the property:

- must be located within the designated plan area.
- must have a minimum increase of \$5,000 in appraised value directly resulting from revitalization work.
- owner must have sufficient written documentation regarding expenditures for improvements.
- must be in compliance with current city codes and regulations.
- owner must not be in arrears with regards to payment of property taxes or any special assessments.



### What kind of “improvements” will increase the appraised value?

New construction, additions, and major rehabilitations will increase the appraised value, which is set by the county appraiser.

**Exclusions to this program:** Swimming pools, parking lots, landscaping (including fences) and singlewide mobile homes do not qualify for this program.

### The Tax Rebate

This tax rebate is a refund of the property taxes that would otherwise be paid on the actual value added to a property due to qualifying improvements. Revitalization work that increases the total appraised property value by at least \$5,000 will be eligible to receive tax rebates under this program.

### Rebate Period

The rebate period is for 5 years for residential properties in the plan area, commercial and industrial properties receiving rebates for up to 8 years. The property owner will receive an annual rebate of 95% of the net new taxes

paid resulting from the improvements made (after processing fee in the amount of 5% of the gross tax rebate or \$75, whichever is greater, is retained by Anderson County to cover administrative costs.)



### How to apply for and receive your rebate:

*Follow these simple steps to receive your property tax rebate:*

1. Pick up an application form for the Neighborhood Revitalization Program available at the Greeley City Hall, and at the local bank.
2. Turn in completed application form to Greeley City Hall, 112 West Brown Street. Questions regarding the application may be directed to the city clerk at Greeley City Hall. Once the application is approved by the City of Greeley, city staff will forward the information to the Anderson County Appraiser.
3. Notify the City when revitalization work has been completed for final inspection.

4. Submit proof of payment of the entire property tax statement for the current tax period to the County treasurer to begin the property tax rebate issuance procedure. The County treasurer will issue the property tax rebate, minus the processing fee, within 30 days after the distribution date established by state law.

For an application form and a copy of the Neighborhood Revitalization Plan for the City of Greeley, please contact:

Greeley City Hall  
112 West Brown Street  
Greeley, Kansas 66033

Telephone: 785-867-2440  
Fax: 785-867-2642



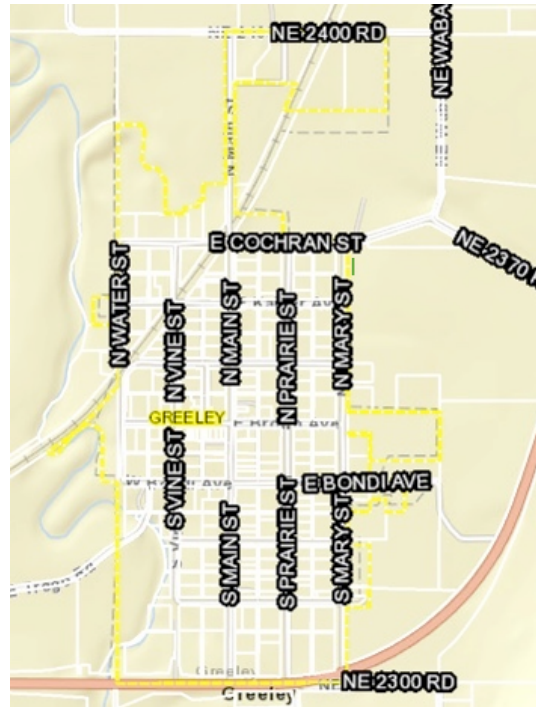
*The City of Greeley thanks you for enhancing your property and the aesthetics of our community.*

If you received this brochure when visiting a local bank or real estate agency, we invite you to stop by City Hall to learn more about this program.

**Let this program work for you while you work on improving your home or business!**

Working together, we can improve the quality of life in Greeley.

*Reduced map of plan area qualifying for the Neighborhood Revitalization Program (outlined below in yellow. All property in the City Limits of Greeley are qualifying.*



**Working together to enhance the quality of life in your neighborhood, our community...**



## **NEIGHBORHOOD REVITALIZATION PLAN**

**Property Tax Rebate Program  
for**

# **Greeley Kansas**