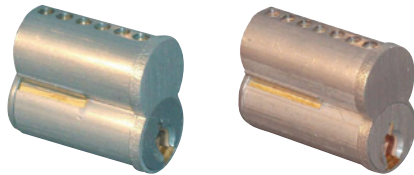


SMALL FORMAT INTERCHANGEABLE (I/C) CORES



206

207

- For Best, Arrow, Falcon and other manufacturer products that use small format I/C cores
- Apart from stocked keyways, other keyways available are B, C, E, F, G, H, K, L, M, Q, 1C & 1D

MFG #	KEYWAY	KEYING	PINS	EZ #
206A26D	A	Uncombined	6	007673
206A26D KA2	A	KA/2	6	035855
206C A26D KD	A	KD	6	051374
206D26D	D	Uncombined	6	007679
206J26D	J	Uncombined	6	007689
207A26D	A	Uncombined	7	007693
207J26D	J	Uncombined	7	007709
CONTROL KEY FOR A KEYED CORES				
CON KEY856947				076524

K

RIM & MORTISE CYLINDER SHELLS



308

316

406
407

316

- Tapered cylinder head (316)
- Set screw from inside cylinder can be used to secure cylinder to lock case

MFG #	PINS	CAM	LENGTH	EZ #
RIM CYLINDER				
308 26D	6	—		007720
MORTISE CYLINDER WITH CAM				
316 601 26D	6	Adams Rite	1-3/8"	007726
MORTISE CYLINDERS LESS CAMS - USE 700 SERIES CAMS				
406 26D	6	Optional	1-1/4"	073500
407 26D	7	Optional	1-3/8"	073501

TOOLS & CAPS



606

610

CAPS

MFG #	DESCRIPTION	EZ #
606	Capping Block & Punch	035856
610	Ejector Punch	035857
CAPS	Cylinder Caps (Package/500)	035854

CAMS FOR 400 SERIES MORTISE CYLINDERS



700

701

702

702L

702S

MFG #	CAMS	EZ #
700	Standard	073503
701	Adams Rite	073504
702	Cloverleaf	073505
702L	Schlage	073506
702S	Sargent	073558