

POWERS' RATINGS

Volume 3 Issue 3

Week Three Issue

© 2025 BP Sports, LLC

Powers' Ratings Computer Plays in CFB 506-441-14 (53.4%) All-Time 2016-2024!!!

Week 2 News and Notes!

For those of you that are new, in this section we'll recap what happened last week specifically, the misleading finals, the key injuries, the bad beats and the line moves. We'll include most of these recaps here, therefore you don't have to waste time reading about them in my game-by-game write-ups for the upcoming week. Without further adieu, here's a run down of what happened last week in the world of CFB.

Week 2 Trends

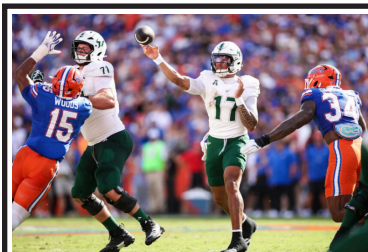
	Favorites-Dogs
Straight Up	69-14
ATS	41-38-3
	Home-Away
Straight Up	67-16
ATS	45-34-3
	Totals (O/U)
Over-Under	45-37
	Season To-Date
	Favorites-Dogs
Straight Up	156-23
ATS	90-84-3
	Home-Away
Straight Up	144-30
ATS	85-84-3
	Totals (O/U)
Over-Under	84-91-2

Largest Favorites to Cover:

Ohio State (-54.5) vs Grambling State, 70-0
Texas Tech (-47.5) vs Kent State, 62-14
Florida State (-45.5) vs East Texas A&M, 77-3
Minnesota (-42.5) vs Northwestern State 66-0...game was called with 6:15 left.
Utah (-42.5) vs Cal Poly, 63-9

Biggest Money line Upsets:

Long Island +950 won 28-23 at Eastern Michigan (+22.5)
South Florida +630 won 18-16 at Florida (+18)
Army +550 won 24-21 at Kansas State (+17)
Bryant +425 won 27-26 at Massachusetts (+14.5)



USF QB Byrum Brown has already led the Bulls to a pair of upsets over ranked teams this season. Last week USF beat No. 13 Florida 18-16. The Bulls were 18-point underdogs and were +630 on the money-line.

Misleading Finals

NC State (-3) beat Virginia 35-31. However, Virginia had a 514-416 yard edge. The Cavaliers missed a FG, were stopped on downs at the NC State 8-yard line and threw an interception in the end zone.

Illinois (-2.5) beat Duke 45-19. However, Duke had a 438-419 yard edge. Duke was -5 in turnovers and those five turnovers led to 28 Illinois points.

Missouri (-5.5) beat Kansas 42-31. Missouri had a dominating 595-251 yard edge. Kansas led 21-6 at one point but at halftime became the first FBS team in 10 years to be tied at halftime despite being -200 yards.

Fresno State (+1) beat Oregon State 36-27. However, Oregon State had a 528-318 yard edge. Fresno State got a punt return TD after a bad snap that saw the punter kick the ball off the turf. Fresno also got an interception return TD in the final minute. Oregon State led 27-26 with under 90 seconds left. The Beavers saw their long snapper get hurt and they went 0-for-4 on two-point conversions.

Colorado (-24) beat Delaware 31-7. However, Colorado only had a 398-396 yard edge. The Buffaloes were +3 in turnovers. Delaware missed a FG and were stopped on downs at the Colorado 6-yard line.

New Mexico State (+3) upset Tulsa 21-14. However, Tulsa had a 376-291 yard edge. Tulsa was intercepted in the end zone and also missed a FG.

Michigan State (-3.5) beat Boston College 42-40 in double overtime. However, Boston College should have won the game. The Eagles fumbled in the end zone on their first possession. They still had a 457-380 yard edge in the game.

Bad Beats

Pitt (-21) beat Central Michigan 45-17. It was only 24-17 late in the third quarter. Instead of taking a knee in the final minute, Pitt scored a TD with :45 left.

Missouri (-5.5) beat Kansas 42-31. Kansas was leading 21-6 at one point in the game. Kansas was still leading 31-28 in the final two minutes when Missouri scored a pair of long TD's. It should be noted that Missouri did dominate the box score in the game (see above).

Kentucky (-8) beat Ole Miss 30-23. Kentucky was covering the whole game until Ole Miss kicked a FG with 1:10 left to go up 30-20. However, Kentucky got a FG with :08 left. The bad beat occurred on those who bet UNDER 51.

Syracuse (-7) beat Connecticut 27-20 in overtime. Connecticut was leading the game 17-6 with under six minutes left in the fourth quarter Syracuse scored a TD with under a minute left and got the 2-point conversion to go up 20-17. Connecticut marched down the field and got a FG in the closing seconds to force OT. UConn was covering for the entire 60 minutes. However, OT is not your friend if you are an UNDER or underdog better. Syracuse scored a TD, UConn didn't.

Minnesota (-42.5) beat Northwestern State 66-0. However, the game was called with 6:15 left in the fourth quarter. Most sportsbooks indicate that 55 minutes need to be played in a football game in order for their to be action.

Injuries/Personnel News

-Georgia Tech QB Haynes King (lower body) missed last week's game vs an FCS opponent but is listed as a starter on this week's depth chart and practiced Tuesday.
-Hawaii QB Micah Alejado (foot) missed last week's game vs Sam Houston State. He is a game-time decision for this week's game vs Portland State.
-Iowa TE Addison Ostrenga (achilles) will miss the rest of the season.
-SMU QB Kevin Jennings (ankle) is expected to play at Missouri State.
-Minnesota RB Darius Taylor (hamstring) is questionable this week at Cal.
-Tulsa QB Kirk Francis (concussion) is questionable this week vs Navy.
-Colorado may start 3rd string Ryan Staub this week at Houston. Colorado played three different QB's last week and Staub was most effective.
-UNLV QB Alex Orji (hamstring) will miss the rest of the season. Anthony Colandrea has been the starter but Orji has gotten a few snaps each game.
-Mississippi State has lost starting OT Blake Steen and starting DE Will Whitson for the season due to injuries. Whitson had 5 TFL's already this season.
-LSU starting center Braelin Moore (ankle) is questionable vs Florida. So is TE Trey'Dez Green (MCL).
-Northwestern's leading rusher RB Cam Porter is out for the season.
-Michigan's Biff Poggi will serve as interim coach the next two game's during Sherone Moore's suspension.
-Tennessee will again be without its two starting CB's vs Georgia this week as both Jermod McCoy and Rickey Gibson are not expected back.
-Old Dominion LB Jason Henderson has announced his retirement from football.
-West Virginia RB Jaheim White (knee) and WR Jaden Bray (foot) are both out for the season. White leads the Mountaineers in rushing and Bray is the 2nd leading receiver.
-Kentucky QB Zach Calzada (shoulder) is questionable this week.
-Kansas State WR Jerand Bradley will miss the next few weeks. He has 10 catches for 152 yards so far this season.

Brad Powers' Radio/TV/Podcast Weekly Schedule This Fall

Per my new contracts with Covers and Hammer Betting Network (Hit the Books), I'm not doing as many shows this year.

Mon 12:00pm ET. Early best bets with Joe Osborne @Covers on Twitter/YouTube
Mon 5:00pm ET. Weekend recap with Joey Knish @HitTheBooks on YouTube
Thu 12:00pm ET. Big game bets with Joe Osborne @Covers on Twitter/YouTube.
Fri 9:00am ET. Weekend preview on Bill King show @NashSportsRadio
Fri 5:00pm ET. Weekend preview with Joey Knish @HitTheBooks on YouTube.
Sat:1:30pm ET. Halftime show of Big Noon Kickoff with with Joey Knish @HitTheBooks on YouTube.
@ indicates the Twitter handle.

Recapping Week 2 Best Bets

Our power ratings plays went 2-2-1 in week two. Those are the plays that are 3 points or more off the Vegas lines. They are still 53% all-time with a 900-game sample size the last 10 years but we must admit, they have not done as well the last two years. VIP customers are off to a 26-24 start to the season (see below).

VIP Records:

CFB Plays: 6-6 -0.65 units
CFB Leans: 7-10
NFL Plays: 2-2 +0.8 units
NFL Regular Season Leans: 7-6
NFL Preseason Leans: 4-0

CFB and NFL Schedules with Vegas and Brad Powers Lines Week 3 September 11th-15th

Thursday, Sept 11th	Time/TV	Open	Current	BP	Saturday, Sept 13th	Time/TV	Open	Current	BP
103 Washington	8:15	48.5	48	49	169 Eastern Michigan	7:30	44.5	46	47
104 Green Bay	Prime	-2.5	-3.5	-3	170 Kentucky	ESPNU	-23	-23	-25
105 NC State	7:30	-7	-7	-7	171 Florida	7:30	51.5	48.5	49
106 Wake Forest	ESPN	53.5	52	51	172 LSU	ABC	-8	-7.5	-9
Friday, Sept 12th	Time/TV	Open	Current	BP	173 Texas A&M	7:30	49.5	49.5	52
107 Colorado	7:30	45.5	45	42	174 Notre Dame	NBC	-6	-6.5	-6
108 Houston	ESPN	-6	-5.5	-6	175 East Carolina	7:30	-8	-7.5	-9
109 Kansas State	9:00	54.5	-1.5	-1	176 Coastal Carolina	ESPN+	52.5	56.5	55
110 Arizona	FOX	PK	54	53	177 New Mexico State	7:30	45.5	43	43
111 New Mexico	10:00	55.5	53	56	178 Louisiana Tech	ESPN+	-7	-10	-9
112 UCLA	BTN	-14	-15.5	-16	179 Massachusetts	7:30	44.5	42.5	43
Saturday, Sept 13th	Time/TV	Open	Current	BP	180 Iowa	BTN	-34	-35	-37
113 Memphis	12:00	-9	-3.5	-6	181 Navy	8:00	-14	-14	-13
114 Troy	ESPNU	51.5	51.5	54	182 Tulsa	ESPN+	57.5	53.5	55
115 Oklahoma	12:00	-28	-21.5	-26	183 Duke	8:00	50.5	54.5	-1
116 Temple	ESPN2	54.5	51.5	50	184 Tulane	ESPN2	-4	PK	55
117 Oregon	12:00	-25	-27.5	-28	185 Utah	8:00	-25	-23	-23
118 Northwestern	FOX	49.5	48.5	48	186 Wyoming	CBSSN	49.5	48.5	49
119 Buffalo	12:00	-20	-22.5	-21	187 Akron	8:30	53.5	55.5	55
120 Kent State	CBSSN	46.5	48.5	47	188 UAB	ESPN+	-11	-11	-11
121 Central Michigan	12:00	45.5	42.5	46	189 Air Force	9:45	-4	-4.5	-5
122 Michigan	BTN	-26	-27.5	-28	190 Utah State	FS1	46.5	51	51
123 Clemson	12:00	-6	-3.5	-3	191 Middle Tennessee	5:00	45.5	48	49
124 Georgia Tech	ESPN	53.5	54	53	192 Nevada		-6	-9	-7
125 Wisconsin	12:00	47.5	46.5	46	193 Texas State	10:30	59.5	59.5	62
126 Alabama	ABC	-19	-21	-20	194 Arizona State	TNT	-13	-14.5	-14
127 South Alabama	12:45	52.5	55	55	195 Minnesota	10:30	-2	-1.5	-1
128 Auburn	SECN	-25	-25.5	-25	196 California	ESPN	46.5	42.5	43
129 Connecticut	3:30	-9	-10	-12	197 Boston College	10:30	-9	-12.5	-13
130 Delaware	ESPN+	45.5	52.5	52	198 Stanford	ACCN	44.5	44	45
131 Georgia	3:30	-7	-3.5	-4	Sunday, Sept14th	Time/TV	Open	Current	BP
132 Tennessee	ABC	49.5	49.5	50	251 New England	1:00	45.5	43.5	-1
133 Pittsburgh	3:30	-6	-7	-8	252 Miami	CBS	-2.5	-1.5	45
134 West Virginia	ESPN	56.5	58	54	253 Jacksonville	1:00	49	48.5	49
135 Washington State	3:30	56.5	59	57	254 Cincinnati	CBS	-6.5	-3.5	-3
136 North Texas	ESPNU	-6	-6	-5	255 Cleveland	1:00	44.5	45	44
137 Oregon State	3:30	56.5	62.5	65	256 Baltimore	CBS	-12.5	-11.5	-10
138 Texas Tech	FOX	-23	-24	-23	257 N.Y. Giants	1:00	44.5	44.5	46
139 USC	3:30	-19	-21	-23	258 Dallas	FOX	-4.5	-6	-6
140 Purdue	CBS	55.5	59	59	259 L.A. Rams	1:00	-5.5	-5.5	-6
141 SMU	3:30	-25	-28	-28	260 Tennessee	CBS	45.5	42	42
142 Missouri State	CBSSN	63.5	61.5	62	261 Buffalo	1:00	-8	-6.5	-5
143 UL-Lafayette	4:00	50.5	47.5	49	262 N.Y. Jets	CBS	44.5	46.5	49
144 Missouri	ESPN+	-21	-27.5	-27	263 Chicago	1:00	49	47	46
145 Iowa State	4:00	-20	-21	-21	264 Detroit	FOX	-5.5	-5.5	-6
146 Arkansas State	ESPN2	51.5	55	55	265 Seattle	1:00	41.5	40	41
147 UTEP	4:15	54.5	51	56	266 Pittsburgh	FOX	-2.5	-3	-1
148 Texas	SECN	-38	-41.5	-42	267 San Francisco	1:00	-7.5	-4.5	-5
149 South Florida	4:30	55.5	56.5	56	268 New Orleans	FOX	44	42.5	43
150 Miami, Florida	CW	-15	-17.5	-18	269 Carolina	4:05	46.5	44	42
151 Liberty	5:00	-4	-6.5	-4	270 Arizona	CBS	-5.5	-6.5	-6
152 Bowling Green	ESPN+	52.5	51	50	271 Denver	4:05	-3.5	-2	43
153 Florida Atlantic	6:00	53.5	58.5	55	272 Indianapolis	CBS	44.5	42.5	-1
154 Florida International	ESPN+	PK	-2.5	-1	273 Philadelphia	4:25	46.5	-1	47
155 Appalachian State	7:00	-2	-1.5	-3	274 Kansas City	FOX	-1.5	47	-1
156 Southern Miss	ESPN+	55.5	55.5	55	275 Atlanta	8:20	46.5	44.5	45
157 Ohio	7:00	55.5	51.5	51	276 Minnesota	NBC	-4.5	-3.5	-3
158 Ohio State	Peacock	-33	-31.5	-31	Monday, Sept 15th	Time/TV	Open	Current	BP
159 Old Dominion	7:00	50.5	50.5	53	277 Tampa Bay	7:00	46.5	42.5	44
160 Virginia Tech	ACCN	-10	-7	-9	278 Houston	ABC	-2.5	-2.5	-4
161 Western Michigan	7:00	49.5	50.5	53	279 L.A. Chargers	10:00	-3	-3.5	-2
162 Illinois	FS1	-24	-27.5	-27	280 Las Vegas	ESPN	44.5	47	46
163 Jacksonville State	7:00	50.5	58.5	57					
164 Georgia Southern	ESPN+	-4	-3.5	-5					
165 Arkansas	7:00	60.5	61.5	63					
166 Ole Miss	ESPN	-10	-7	-7					
167 Vanderbilt	7:45	49.5	48	48					
168 South Carolina	SECN	-7	-4.5	-4					

Games in Rotation Order
Thursday, September 11th

HOME TEAM IN CAPS

NC State 29 WAKE FOREST 22. Not an ideal spot for NC State traveling on a short week after playing a “to the wire” game vs Virginia last week. Wake is at home for a 3rd straight game and only off an FCS team. Ratings lean NC State, spot says Wake. We pass.

Friday, September 12th

HOUSTON 24 Colorado 18. Lots of drama surrounding the Colorado QB position. Coach Prime used three different QB’s last week and there are rumors that 3rd string QB Ryan Staub might get the start here. That’s not good news vs a Houston defense that ranks No. 4 in total and scoring defense. We bet Houston and UNDER here.

Kansas State 27 ARIZONA 26. Kansas State is 0-3 ATS this season and we’ve downgraded them more than any team in the country so far. They’re coming off an outright loss as a 17-point favorite to Army last week where they only had the ball for 3 minutes in the second half. That’s not a typo. Kansas State had 3 minutes of time of possession in a half! Arizona is 2-0 ATS and feeling good. We haven’t bet it yet but we think K-State is the sharper side.

UCLA 36 New Mexico 20. We were impressed with New Mexico at Michigan in the opener. Not so much last week when they got out-gained by Idaho State. UCLA has been horrific so far at 0-2 SU and ATS. The Bruins desperately need a win. Won’t be a popular play with the locals, but we bet UCLA this week and lean OVER at current.

Saturday, September 13th

Memphis 30 TROY 24. Lots of money has come in on Troy here. The Trojans led Clemson 16-0 last week before allowing the game’s final 27 points. We won a bet with Memphis last week but did not come away impressed as the final scoreboard was misleading (Memphis “Pick 6” late). With that being said, our ratings like Memphis at current and also the OVER.

Oklahoma 38 TEMPLE 12. Very quietly, the market has loved Temple this year and has been rewarded with two easy covers. They were bet from dog to favorite vs UMass in the opener and a big group liked them last week vs Howard. The market loves them again here catching Oklahoma off the big win over Michigan. We understand betting Temple at +28, but our ratings like OU at current.

Oregon 38 NORTHWESTERN 10. We think Oregon had one of the most impressive performances of the season last week in their 69-3 demolition of Oklahoma State. That was actually the score after the third quarter. We now have Oregon No. 1 in our power ratings (see page 5). This is a tricky game here traveling to Northwestern’s lake-side stadium and the Ducks have a rivalry game vs Oregon State and a trip to Penn State on deck. Some UNDER money showed yesterday. We haven’t bet side or total.

Buffalo 34 KENT STATE 13. Kent State is the worst team in CFB but there are other MAC schools that might give them a run this year. Buffalo is not one of them with the Bulls having the best defense in the MAC. We’re not built to lay more than three TD’s on the road in conference play.

MICHIGAN 37 Central Michigan 9. We’ve downgraded Michigan significantly this season so far. We weren’t impressed with their performance vs New Mexico and last week they should have lost by more than to Oklahoma (out-gained by 120 yards and were +2 TO’s). With that being said, our ratings like Michigan here. However, it’s tough to get significant margin when CMU’s offense runs a slow tempo (No. 133). UM head coach Sherrone Moore is suspended here.

Clemson 28 GEORGIA TECH 25. Lots of money on Georgia Tech here including us. The Yellow Jackets are 2-0 ATS and will get back QB Haynes King here. Clemson is 0-2 ATS. After getting beat much worse than the scoreboard vs LSU, they followed it up by trailing Troy 16-0 as a 31-point favorite (CU did win 27-16). GT has several big wins over ranked opponents under HC Key including vs Miami last year. Even after the line move, we like GT getting the hook.

ALABAMA 33 Wisconsin 13. Alabama responded from the shocking loss to Florida State by crushing ULM 73-0 last week. They will get a much tougher test here especially from a Wisconsin defense that has allowed just 10 points so far. We do think Wisconsin’s offense is in trouble. We don’t see much value here.

AUBURN 40 South Alabama 15. South Alabama impressed us last week in their 2-point loss to Tulane. It was a back-and-forth game with USA starting hot, going cold and then almost forcing OT. Meanwhile, Auburn took care of business vs Ball State. The Tigers defense will get a stiffer test here but we do expect their offense to continue to look improved. A sharp group bet OVER yesterday. We’re on the sidelines.

Connecticut 32 DELAWARE 20. Both teams deserved covers last week. UConn led Syracuse 17-6 late in the fourth quarter but ended up losing in OT. Meanwhile, Delaware lost 31-7 to Colorado but the Blue Hens only got out-gained by 2 yards. This is one of the bigger home games in Delaware history with this being their first season of FBS play. Still, we like UConn to take care of business.

Georgia 27 TENNESSEE 23. The biggest game on Saturday. The Bulldogs have dominated the series with eight straight wins by an average of 25 ppg and UGA has gone 7-1 ATS. We’ve seen Tennessee take the money though this week as this line has crashed (was +7.5 on Sunday). Has Georgia been playing possum so far this year? They haven’t impressed vs Marshall or Austin Peay. Meanwhile, Tennessee is 2-0 ATS and off a 72-17 win. While we are a part of the Tennessee money at “+7.5”, we lean UGA at current and there are whispers of big money coming in on UGA later this week.

Pittsburgh 31 WEST VIRGINIA 23. Backyard Brawl. Lots of money on Pitt this week. It’s more of a “play against” a WVU team that was upset by Ohio last week 17-10 and should have lost by more. WVU then lost two of their best players for the season in RB White and WR Bray to injuries. Tough seeing them keep pace with a Pitt offense averaging 53 ppg on offense and only allowing 3.3 yards per play on defense. We bet Pitt but prefer UNDER at current.

NORTH TEXAS 31 Washington State 26. An interesting game for both teams who have had inconsistent performances so far. Both teams are 2-0. Both have a 3-point win and a comfortable win. The market has been back and forth. We needed a “+7” to be involved on Washington State. We might see it later in the week.

TEXAS TECH 44 Oregon State 21. Oregon State is 0-2 SU and 0-2 ATS in a pair of home games that were competitively priced (+2.5 vs Cal, -1 vs Fresno). Last week’s loss to Fresno State was very misleading (see page 1). Now they face a Texas Tech team that ranks No. 1 in ypg margin at +402.5. The Red Raiders have faced the weakest schedule in the country so far in Kent State and Arkansas Pine Bluff. We lean Oregon State but prefer the OVER.

USC 41 PURDUE 18. While they have only played Missouri State and Georgia Southern so far, USC ranks No. 1 in yards per play, No. 1 in yards per game and No. 1 in yards per game on offense. They are +6.8 in yards per play margin (also No. 1). While Purdue looks like a competent team (unlike last year) under new coach Odom, we don’t see the Boilers keeping pace here.

SMU 45 MISSOURI STATE 17. SMU blew a 14-point 4Q lead to Baylor last week and lost in double overtime. Statistically, they deserved to lose the game getting out-gained by 150 yards but they definitely had their chances to win. Speaking of wins, Missouri State got their first win as an FBS team as they upset Marshall 21-20 last week. The Bears deserved to win by more (outgained Marshall 474-274). Unique road spot for SMU here. We’re not involved.

MISSOURI 38 UL-Lafayette 11. ULL is playing with a backup QB. Daniel Beale was only 14 of 22 for 86 yards last week in a win over FCS McNeese St. Now he faces an SEC defense. The market is fading his ability to have success as Missouri and UNDER has received a lot of play. We bet Missouri but are passing at current.

Iowa State 38 ARKANSAS STATE 17. This is a tough spot for Iowa State. They are 3-0 having won an important rivalry game in Ireland. They just beat their arch rival Iowa at home for the first time in nearly 15 years. We don’t expect an “A” game from them. However, Arkansas State’s defense is allowing 7.8 yards per play (No. 133). Over got some play early but we think this is a rock solid line right now.

TEXAS 49 UTEP 7. Even though Texas won 38-7 last week, we weren’t overly impressed as they benefitted from several San Jose State turnovers. There are also the social media clips out there that legit make you wonder if QB Arch Manning is 100% right now. UTEP had a 42-17 blowout win over UT-Martin last week (only favored by 7.5). We like the OVER.

MIAMI 37 South Florida 19. You can’t be more impressed with what USF has done so far this season. They blew out ranked Boise State on the scoreboard and then upset No. 13 Florida as a 18-point underdog. This is going to be a really tough spot for them playing a third straight ranked team. Miami is only off FCS Bethune-Cookman and is playing a 3rd straight home game. We bet Miami.

Liberty 27 BOWLING GREEN 23. Liberty continues to disappoint losing outright as a 6-point road favorite last week. Meanwhile, Bowling Green trailed Cincinnati 21-0 early but out-played the Bearcats in the second half of a 34-20 loss. Our power ratings like Bowling Green here but we need a “+7” to show for us to be involved. Lean UNDER.

FIU 28 Florida Atlantic 27. The Shula Bowl. Two new coaches that both have wins over FCS opponents and this is their first chance at a big win. We came away impressed with FIU's defense vs Penn State as the Nittany Lions scored a couple of TD's late. FAU had a bunch of turnovers vs Maryland but rebounded last week. Early sharp group was on FIU but we're not involved yet.

Appalachian State 29 SOUTHERN MISS 26. Both had misleading finals vs FCS teams last week. Appalachian State only beat Lindenwood by 7 despite a 503-216 yard edge. App St had 4 turnovers. Meanwhile, Southern Miss beat Jackson State by 18 despite only a 363-322 yard edge. That's creating some value on Appalachian State here.

OHIO STATE 41 Ohio 10. You have to be super impressed with Ohio so far this season. Despite having a new head coach the Bobcats nearly upset Rutgers in the opener and then upset West Virginia last week in front of a record home crowd. They should have won by more as OU had a 429-250 yard edge vs WVU. The defending National Champs are 2-0 ATS and are off FCS Grambling with a bye on deck. We bet Ohio on the openers but wouldn't at current.

VIRGINIA TECH 31 Old Dominion 22. The Hokies are 0-2 and head coach Brent Pry is probably coaching in his last season. They led Vanderbilt 20-10 at halftime last week and lost 44-20. Now they're facing a dangerous Old Dominion team with a mobile QB. Multiple sharp groups have bet ODU this week (opened as high as 13.5). It's to the point now where we'd lean VT at current.

ILLINOIS 40 Western Michigan 13. Illinois is the most overrated team in the country. They rank No. 9 in the AP poll and we don't even have them in the Top 25 of our power ratings. They had a very misleading 45-19 win over Duke last week where they were +5 in TO's (outgained 438-419). We're not sure if this is the spot to fade them but the Illini do have huge games at Indiana and USC on deck.

GEORGIA SOUTHERN 31 Jacksonville State 26. Jacksonville State has been impressive so far with a 2-0 ATS mark. They nearly upset UCF as a 20-point underdog and did upset Liberty last week. On the other side, Georgia Southern is off two blow out losses on the west coast. They rank dead last in defensive ypp, total and scoring defense. However, we think this is a "buy low" spot for them. They did lead Fresno 14-10 at halftime and nearly put up 400 yards on USC last week so it hasn't been horrific. A sharp group quietly bet Georgia Southern a few days ago and we gave them out to VIP clients today.

OLE MISS 35 ARKANSAS 28. Both teams are 2-0. Ole Miss is off an SEC road win at Kentucky but we weren't overly impressed. QB Simmons was banged up a bit at the end of the game but should be available here. We have liked what we've seen from the Arkansas offense as they rank in the Top 5 in ypp, ypg and ppg. A lot of money has come in on Arkansas here as this line opened as high as 10. We're a part of it but can't recommend them at the current 7.

SOUTH CAROLINA 26 Vanderbilt 22. Both teams have already played Virginia Tech this season. South Carolina was outgained by the Hokies in the opener and benefited from a punt return TD. Meanwhile, Vanderbilt outgained Virginia Tech by 242 yards and won by 24 on the road. Like Illinois, we think South Carolina is one of the most overrated teams in the country. Last week the Gamecocks had a pair of punt return TD's and still only beat FCS South Carolina State 38-10 (were -42.5). We bet Vanderbilt and think the Commodores are live.

KENTUCKY 36 Eastern Michigan 11. If you read the market tea leaves, it looks like Kentucky will be without their starting QB for this game. We don't think Calzada is worth that much. Plus Eastern Michigan has been horrible this year. They got blown out by Texas State in the opener and last week suffered the biggest upset of the CFB season so far. They lost to Long Island as 22.5-point favorites. It was legit as they were outgained 479-311. We like Kentucky here.

LSU 29 Florida 20. The Gators are a TD underdog here and have a road trip to Miami on deck. Lose both and at 1-3, the Gators could be making a coaching change heading into the bye. Last week they fell to USF as 18-point favorites. LSU slept walked through a 23-7 win over Louisiana Tech. Napier and the Gators responded last year after some tough early losses. So far the market likes them here. We don't and would be interested in LSU at -7.

NOTRE DAME 29 Texas A&M 23. ND upset A&M in College Station last year. We bet the OVER in this one. Both team's defenses have taken a step back this season. Both teams have upgraded at WR and should have improved pass attacks. ND comes in off a bye after getting upset by Miami in the opener. Safe to say, their season is on the line. Texas A&M is just 3-12 ATS under Mike Elko including 0-2 ATS this year. They've only played UTSA and Utah State so we'll get a better look at them here. Market likes A&M and we don't disagree.

East Carolina 32 COASTAL CAROLINA 23. Quietly, Coastal is off to one of the worst starts in CFB this year. They were destroyed 48-7 to Virginia in the opener as a 2-TD underdog and then only led FCS Charleston Southern 3-0 entering the 4Q last week as a 4-TD favorite (they ended up winning 13-0). Meanwhile, ECU is 2-0 ATS. They outplayed NC State in second half of the opener and destroyed an FCS team last week. We gave out ECU to VIP clients this week.

LOUISIANA TECH 26 New Mexico State 17. New Mexico State comes in 2-0. Their middling performance vs Bryant in the opener looks better after Bryant upset UMass last week. And speaking of last week, the Aggies upset Tulsa. Louisiana Tech's defense looks legit. After getting a shutout in Week 1, they allowed just 23 points to LSU. We didn't bet side or total.

IOWA 40 Massachusetts 3. Tough laying 35 points with this Iowa offense. However, UMass is in the running for worst team in CFB this season. They were crushed by Temple in the opener as a 2-point underdog and then lost to FCS Bryant last week as a 2-TD favorite. Our ratings like Iowa but we haven't bet it yet.

Navy 34 TULSA 21. Tulsa was quietly getting a lot of play in the markets. Groups bet OVER 3.5 wins, bet them in Week 1 and bet them again in Week 2. Last week they lost outright as a road favorite to New Mexico State. QB Francis was concussed but we thought the backup Baylor Hayes looked better. Hayes played at East Tennessee State under new coach Tre Lamb. Navy couldn't cover a huge spread vs UAB last week. We're not sure they can cover this one either.

Duke 28 TULANE 27. Lots of love for Duke here. They have went from "+3" to favorite in some spots. It makes sense considering they had a very misleading 45-19 loss to Illinois last week. A game Duke was -5 in turnovers. Meanwhile, Tulane is +6 in turnovers already this season. Duke QB Darian Mensah is returning to the place where he started last season. Sumrall should know how to defend him but we like the "buy low" spot for Duke here.

Utah 36 WYOMING 13. Both teams are 2-0 SU and 2-0 ATS. We really like what we have seen from the new Utah offense. They've scored 43 and 63. They couldn't do that offensively vs "air" a year ago. Wyoming has looked improved and this is a weird spot for Utah with a big game vs Texas Tech on deck. We're passing.

UAB 33 Akron 22. Akron has scored zero points so far this season. UAB's defense has allowed 40 points per game this season. It's the resistible force vs the movable object! Our ratings like Akron here but we haven't gotten to the window yet.

Air Force 28 UTAH STATE 23. We might have more question marks about Air Force than any other team in CFB right now. Not that we think they are bad, it's just they have played one game and it was against an overmatched FCS opponent. They had a bye last week. Meanwhile, Utah State is 2-0 ATS under new coach Mendenhall. There has been some back and forth in the market on this one. We bet Air Force -3 on the open thinking the line would go up, but it was just a numbers play.

NEVADA 28 Middle Tennessee 21. Nevada was very fortunate to beat Sacramento State last week. The Wolf Pack got a "Pick 6" late. Sacramento then had not one, but two TD's called back and then they missed a FG. On the other side, Middle Tennessee did lose to a FCS school in Austin Peay this year. Tough trusting Nevada laying this kind of number. We lean with MT.

ARIZONA STATE 38 Texas State 24. Arizona State comes in of the upset loss to Mississippi St. The Sun Devils were impacted by the Cowbells early but were clearly the better team in the second half before allowing a long 3rd & long TD pass in the final minute. They're facing a high-powered Texas State offense off an upset win over UTSA. We came away impressed by their new QB Brad Jackson.

Minnesota 22 CALIFORNIA 21. We bet Cal and the UNDER on the openers and so far the market agrees. This is a unique spot for Minnesota and a very late start time for their body clocks. More importantly, their best player RB Taylor is banged up and might not play. Both teams are off FCS opponents. We like what we've seen from true frosh Cal QB JKS this year but this Minnesota defense that ranks No. 1 allowing just 96.5 ypg will be a tough test. Spot says Cal, ratings say Minnesota. We're passing at current.

Boston College 29 STANFORD 16. We bet against Boston College last week and came away impressed especially by their QB Lonergan who was originally at Alabama. Lonergan is completing 76% of his passing with an 8-to-0 TD-to-INT ratio so far. How in the world can Stanford QB Gulbranson and his 0-to-3 TD-to-INT ration and 11.0 QBR (No. 128) keep pace? The market must not think so as despite a horrific spot traveling across the country playing at 10:30, BC is taking money.

2025 College Football Power Ratings (Vegas Ratings Not AP Poll Style)

Rk	School	Start	Now	Diff	Rk	School	Start	Now	Diff	Rk	School	Start	Now	Diff
1.	Oregon	85.50	90.50	+5.0	51.	Rutgers	70.65	69.65	-1.0	101.	Hawaii	56.38	54.88	-1.5
2.	Ohio State	90.15	90.15	0.0	52.	USF	63.53	69.53	+6.0	102.	Jacksonville State	51.60	54.10	+2.5
3.	Texas	89.56	89.06	-0.5	53.	Tulane	67.67	69.17	+1.5	103.	Temple	48.53	54.03	+5.5
4.	Penn State	90.79	88.79	-2.0	54.	Virginia	66.46	68.96	+2.5	104.	Rice	51.09	53.59	+2.5
5.	Georgia	88.75	87.75	-1.0	55.	Michigan State	68.68	68.68	0.0	105.	Arkansas State	52.96	52.96	0.0
6.	Alabama	89.10	86.60	-2.5	56.	Virginia Tech	70.38	67.88	-2.5	106.	Louisiana Tech	52.37	52.87	+0.5
7.	Notre Dame	87.28	85.78	-1.5	57.	Arizona	65.78	67.78	+2.0	107.	San Diego State	52.82	52.82	0.0
8.	LSU	84.15	84.65	+0.5	58.	NC State	69.25	67.75	-1.5	108.	Florida Atlantic	50.93	52.43	+1.5
9.	Oklahoma	81.64	82.64	+1.0	59.	Colorado	69.37	67.37	-2.0	109.	Southern Miss	51.23	52.23	+1.0
10.	Miami (FL)	81.09	82.59	+1.5	60.	James Madison	64.56	66.56	+2.0	110.	Bowling Green	51.81	51.81	0.0
11.	Tennessee	82.07	82.57	+0.5	61.	California	63.37	66.37	+3.0	111.	UL-Monroe	52.22	51.72	-0.5
12.	USC	79.03	82.53	+3.5	62.	UCF	66.14	66.14	0.0	112.	Utah State	50.61	51.61	+1.0
13.	Texas A&M	83.40	82.40	-1.0	63.	Memphis	65.38	65.88	+0.5	113.	Central Michigan	48.48	51.48	+3.0
14.	Clemson	85.55	81.55	-4.0	64.	Syracuse	66.62	65.62	-1.0	114.	FIU	48.21	51.21	+3.0
15.	Ole Miss	80.86	81.36	+0.5	65.	UCLA	70.20	65.20	-5.0	115.	New Mexico	48.43	50.93	+2.5
16.	Auburn	79.61	80.61	+1.0	66.	Navy	64.95	64.95	0.0	116.	Northern Illinois	52.66	50.66	-2.0
17.	Michigan	83.48	79.48	-4.0	67.	West Virginia	66.26	64.26	-2.0	117.	Coastal Carolina	55.41	50.41	-5.0
18.	Indiana	79.40	79.40	0.0	68.	Maryland	63.68	64.18	+0.5	118.	Georgia State	52.31	50.31	-2.0
19.	Florida	82.36	79.36	-3.0	69.	North Carolina	67.81	63.81	-4.0	119.	Western Michigan	49.34	49.84	+0.5
19.	Utah	75.86	79.36	+3.5	70.	Texas State	59.71	63.71	+4.0	120.	Marshall	52.60	49.60	-3.0
21.	Florida State	71.62	78.62	+7.0	71.	Toledo	61.54	63.54	+2.0	121.	Nevada	50.08	49.58	-0.5
22.	Missouri	76.16	78.16	+2.0	72.	UTSA	64.54	63.04	-1.5	122.	UAB	48.97	48.97	0.0
23.	Texas Tech	76.47	77.97	+1.5	73.	UNLV	62.47	62.97	+0.5	123.	UTEP	47.71	48.71	+1.0
24.	Nebraska	76.16	77.66	+1.5	74.	Ohio	59.43	62.93	+3.5	124.	Tulsa	44.44	47.94	+3.5
25.	TCU	76.13	77.63	+1.5	75.	Army	62.52	62.52	0.0	125.	Delaware	47.92	47.42	-0.5
26.	South Carolina	79.03	77.03	-2.0	76.	Connecticut	59.75	61.75	+2.0	126.	Sam Houston State	49.69	46.69	-3.0
27.	Iowa State	75.52	77.02	+1.5	77.	Old Dominion	58.87	60.87	+2.0	127.	Charlotte	47.51	46.51	-1.0
28.	Illinois	76.45	76.95	+0.5	78.	Northwestern	63.23	60.73	-2.5	128.	Missouri State	46.24	46.24	0.0
29.	Arkansas	74.94	76.94	+2.0	79.	North Texas	58.95	60.45	+1.5	129.	Kennesaw State	44.36	45.36	+1.0
30.	Louisville	77.87	76.87	-1.0	80.	East Carolina	56.93	60.43	+3.5	130.	New Mexico State	46.25	45.25	-1.0
31.	Baylor	77.59	76.59	-1.0	81.	Oklahoma State	63.11	60.11	-3.0	131.	Eastern Michigan	48.38	43.88	-4.5
32.	SMU	78.50	76.50	-2.0	82.	Air Force	58.77	59.77	+1.0	132.	Middle Tennessee	46.97	43.47	-3.5
33.	Georgia Tech	74.41	76.41	+2.0	83.	Fresno State	58.23	59.73	+1.5	133.	Akron	46.61	43.11	-3.5
34.	Arizona State	79.83	76.33	-3.5	84.	San Jose State	60.95	58.95	-2.0	134.	Ball State	43.05	40.05	-3.0
35.	Washington	75.25	76.25	+1.0	85.	Oregon State	61.68	58.18	-3.5	135.	Massachusetts	44.23	39.73	-4.5
36.	Iowa	76.85	75.35	-1.5	86.	Purdue	55.56	58.06	+2.5	136.	Kent State	36.96	35.46	-1.5
37.	Vanderbilt	72.89	74.89	+2.0	86.	Stanford	59.56	58.06	-1.5	Biggest Gains From Start of Season		Biggest Losses From Start of Season		
38.	BYU	72.33	74.33	+2.0	88.	Troy	57.01	58.01	+1.0					
39.	Kansas	72.94	72.94	0.0	89.	Buffalo	57.48	57.98	+0.5	Florida State	+7.0	Kansas State	-8.0	
40.	Minnesota	72.72	72.72	0.0	90.	Wake Forest	59.13	57.63	-1.5	USF	+6.0	UCLA	-5.0	
41.	Pittsburgh	70.73	72.23	+1.5	91.	South Alabama	59.62	57.62	-2.0	Temple	+5.5	Coa. Carolina	-5.0	
42.	Boise State	73.73	71.23	-2.5	92.	Liberty	60.10	57.60	-2.5	Oregon	+5.0	UL-Lafayette	-4.5	
43.	Wisconsin	74.06	71.06	-3.0	93.	Miami (OH)	56.85	56.35	-0.5	Texas State	+4.0	Eastern Mich	-4.5	
44.	Boston College	68.34	70.34	+2.0	94.	Colorado State	56.21	56.21	0.0	USC	+3.5	Massachusetts	-4.5	
45.	Kansas State	78.26	70.26	-8.0	95.	Georgia Southern	59.69	56.19	-3.5	Utah	+3.5	Clemson	-4.0	
46.	Kentucky	69.63	70.13	+0.5	96.	Appalachian State	55.47	55.97	+0.5	Ohio	+3.5	Michigan	-4.0	
47.	Cincinnati	70.10	70.10	0.0	97.	Wyoming	54.83	55.83	+1.0	East Carolina	+3.5	North Carolina	-4.0	
48.	Houston	69.52	70.02	+0.5	98.	Washington State	55.81	55.81	0.0	Tulsa	+3.5			
49.	Duke	70.50	70.00	-0.5	99.	UL-Lafayette	60.15	55.65	-4.5					
50.	Mississippi State	67.31	69.81	+2.5	100.	Western Kentucky	53.60	55.10	+1.5					

2025 Week 3 College Football Power Ratings by Conference

American			MAC			Sun Belt			Big 12			SEC		
Rk	Team	Rating	Rk	Team	Rating	Rk	Team	Rating	Rk	Team	Rating	Rk	Team	Rating
52.	USF	69.53	71.	Toledo	63.54	60.	James Madison	66.56	64.	Syracuse	65.62	18.	Indiana	79.40
53.	Tulane	69.17	74.	Ohio	62.93	70.	Texas State	63.71	69.	North Carolina	63.81	24.	Nebraska	77.66
63.	Memphis	65.88	89.	Buffalo	57.98	77.	Old Dominion	60.87	86.	Stanford	58.06	35.	Washington	76.25
66.	Navy	64.95	93.	Miami (OH)	56.35	88.	Troy	58.01	90.	Wake Forest	57.63	36.	Iowa	75.35
72.	UTSA	63.04	110.	Bowling Green	51.81	91.	South Alabama	57.62	Big 12	Team	Rating	40.	Minnesota	72.72
75.	Army	62.52	113.	Central Michigan	51.48	95.	Georgia Southern	56.19				19.	Utah	79.36
79.	North Texas	60.45	116.	Northern Illinois	50.66	96.	Appalachian State	55.97	23.	Texas Tech	77.97	51.	Rutgers	69.65
80.	East Carolina	60.43	119.	Western Michigan	49.84	99.	UL-Lafayette	55.65	25.	TCU	77.63	65.	UCLA	65.20
103.	Temple	54.03	131.	Eastern Michigan	43.88	105.	Arkansas State	52.96	27.	Iowa State	77.02	68.	Maryland	64.18
104.	Rice	53.59	133.	Akron	43.11	109.	Southern Miss	52.23	31.	Baylor	76.59	78.	Northwestern	60.73
108.	Florida Atlantic	52.43	134.	Ball State	40.05	111.	UL-Monroe	51.72	34.	Arizona State	76.33	86.	Purdue	58.06
122.	UAB	48.97	135.	Massachusetts	39.73	117.	Coastal Carolina	50.41	38.	BYU	74.33	SEC	Team	Rating
124.	Tulsa	47.94	136.	Kent State	35.46	118.	Georgia State	50.31	39.	Kansas	72.94			
127.	Charlotte	46.51				120.	Marshall	49.60	45.	Kansas State	70.26	5.	Georgia	87.75
CUSA			Mountain West			ACC			Big Ten			SEC		
Rk	Team	Rating	Rk	Team	Rating	Rk	Team	Rating	Rk	Team	Rating	Rk	Team	Rating
92.	Liberty	57.60	42.	Boise State	71.23	10.	Miami (FL)	82.59	47.	Cincinnati	70.10	6.	Alabama	86.60
100.	Western Kentucky	55.10	73.	UNLV	62.97	14.	Clemson	81.55	48.	Houston	70.02	8.	LSU	84.65
102.	Jacksonville State	54.10	82.	Air Force	59.77	21.	Florida State	78.62	59.	Arizona	67.78	9.	Oklahoma	82.64
106.	Louisiana Tech	52.87	83.	Fresno State	59.73	30.	Louisville	76.87	62.	UCF	66.14	11.	Tennessee	82.57
114.	FIU	51.21	84.	San Jose State	58.95	32.	SMU	76.50	67.	West Virginia	64.26	13.	Texas A&M	82.40
123.	UTEP	48.71	94.	Colorado State	56.21	41.	Pittsburgh	72.23	81.	Oklahoma State	60.11	15.	Ole Miss	81.36
125.	Delaware	47.42	97.	Wyoming	55.83	44.	Boston College	70.34	Big Ten	Team	Rating	16.	Auburn	80.61
126.	Sam Houston State	46.69	101.	Hawaii	54.88	49.	Duke	70.00				1.	Oregon	90.50
128.	Missouri State	46.24	107.	San Diego State	52.82	54.	Virginia	68.96	2.	Ohio State	90.15	22.	Missouri	78.16
129.	Kennesaw State	45.36	112.	Utah State	51.61	56.	Virginia Tech	67.88	4.	Penn State	88.79	26.	South Carolina	77.03
130.	New Mexico State	45.25	115.	New Mexico	50.93	58.	NC State	67.75	12.	USC	82.53	37.	Vanderbilt	74.89
132.	Middle Tennessee	43.47	121.	Nevada	49.58				17.	Michigan	79.48	46.	Kentucky	70.13
												50.	Mississippi State	69.81

Week 3 Computer Projected Lines for Every CFB Game

For the past eight seasons we have posted computer projected lines for every game on Wednesday. **Games where there was of difference of more than 3 points saw our computer lines actually beat the Vegas line at a 506-441-14 (53.4%) clip! Last week our computer went 2-2-1 and for the season now stands at 4-8-1.** That's pretty solid and actually better than our own handicapping in some seasons. Keep in mind, these computer lines don't take into consideration off-the-field factors like revenge or flat spots or if there are late-week injuries. They are basically a power-rating number difference between the two teams that also takes into consideration the home field advantage.

Of the 5 games where our computer is off more than 3 points compared to the Vegas line (highlighted), our favorite team this week to back would be **Michigan -27.5**.

The Comp column is the computer projected line and the Diff column is the difference between the Vegas line and the Computer line. "+" numbers in the difference column say back the underdog. "-" numbers in the difference

Thursday, Sept 11th			
Line	Comp	Diff	
105 NC State			
106 Wake Forest	+7.0	+8.1	-1.1
Friday, Sept 12th			
Line	Comp	Diff	
107 Colorado			
108 Houston	-5.5	-4.9	+0.6
109 Kansas State			
110 Arizona	+1.5	0.0	+1.5
111 New Mexico			
112 UCLA	-15.5	-16.5	-1.0
Saturday, Sept 13th			
Line	Comp	Diff	
113 Memphis			
114 Troy	+3.5	+5.6	-2.1
115 Oklahoma			
116 Temple	+21.5	+26.6	-5.1
117 Oregon			
118 Northwestern	+27.5	+28.3	-0.8
119 Buffalo			
120 Kent State	+22.0	+21.3	+0.7
121 Central Michigan			
122 Michigan	-27.5	-31.5	-4.0
123 Clemson			
124 Georgia Tech	+3.5	+2.9	+0.6
125 Wisconsin			
126 Alabama	-21.0	-19.5	+1.5
127 South Alabama			
128 Auburn	-25.5	-25.7	-0.2
129 Connecticut			
130 Delaware	+10.0	+12.3	-2.3
131 Georgia			
132 Tennessee	+3.5	+1.9	+1.6
133 Pittsburgh			
134 West Virginia	+7.0	+5.2	+1.8
135 Washington State			
136 North Texas	-6.0	-6.6	-0.6
137 Oregon State			
138 Texas Tech	-24.0	-22.5	+1.5
139 USC			
140 Purdue	+21.0	+22.5	-1.5
141 SMU			
142 Missouri State	+28.0	+28.5	-0.5
143 UL-Lafayette			
144 Missouri	-27.5	-25.5	+2.0
145 Iowa State			
146 Arkansas State	+21.0	+21.8	-0.8
147 UTEP			
148 Texas	-41.5	-43.4	-1.9
149 South Florida			
150 Miami, Florida	-17.5	-15.8	+1.7
151 Liberty			
152 Bowling Green	+6.5	+4.3	+2.2
153 Florida Atlantic			
154 FIU	-2.5	-0.5	+2.0

155 Appalachian State			
156 Southern Miss	+1.5	+1.7	-0.2
157 Ohio			
158 Ohio State	-31.5	-31.0	+0.5
159 Old Dominion			
160 Virginia Tech	-7.0	-9.8	-2.8
161 Western Michigan			
162 Illinois	-27.5	-29.4	-1.9
163 Jacksonville State			
164 Georgia Southern	-3.5	-4.6	-1.1
165 Arkansas			
166 Ole Miss	-7.0	-7.2	-0.2
167 Vanderbilt			
168 South Carolina	-4.5	-4.9	-0.4
169 Eastern Michigan			
170 Kentucky	-23.0	-28.8	-5.8
171 Florida			
172 LSU	-7.5	-9.0	-1.5
173 Texas A&M			
174 Notre Dame	-6.5	-6.6	-0.1
175 East Carolina			
176 Coastal Carolina	+7.5	+7.8	-0.3
177 New Mexico State			
178 Louisiana Tech	-10.0	-9.9	+0.1
179 Massachusetts			
180 Iowa	-35.0	-38.6	-3.6
181 Navy			
182 Tulsa	+14.0	+15.3	-1.3
183 Duke			
184 Tulane	0.0	-1.7	-1.7
185 Utah			
186 Wyoming	+23.0	+21.0	+2.0
187 Akron			
188 UAB	-11.0	-8.4	+2.6
189 Air Force			
190 Utah State	+4.5	+5.9	-1.4
191 Middle Tennessee			
192 Nevada	-9.0	-8.1	+0.9
193 Texas State			
194 Arizona State	-14.5	-15.4	-0.9
195 Minnesota			
196 California	+1.5	+4.1	-2.6
197 Boston College			
198 Stanford	+12.5	+10.3	+2.2

Betting CFB Openers

Every Sunday in Vegas at 11am PT, Circa Sports is one of the first books in the world to release CFB lines and we bet them every week. We think it's the best value bets we make all week. 2020 was the first season where we tracked every single bet we made and posted them in the weekly newsletters. We were very pleased with our 119-76-3 (61%) record on these Sunday bets with an average line value of 2.6 ppg! In 2021, we were 224-196-5 (53.3%) vs the Circa openers with an average line value of 1.8 ppg. In 2022, we were 314-262-14 (54.5%, CLV 417-122-51 +1.65 ppg). In 2023, we were 405-358-6 (53.4%, CLV 577-137-55 +2.09 ppg). So far this season we are 30-20-1 60% (CLV 47-3-1 +2.73 ppg) Below is some of what we bet already for Week 3 which includes bets we made in the summer for this week.

\$575 (108) Houston -3 (Draft Kings)
 \$550 (108) Houston UNDER 45.5 (Fan Duel)
 \$550 (112) UCLA -13.5 (Fan Duel)
 \$550 (123) Clemson -7.5 (Draft Kings)...made in the summer.
 \$500 (124) Georgia Tech +6.5 (Fan Duel)
 \$550 (124) Georgia Tech UNDER 55.5 (Fan Duel)
 \$550 (129) Connecticut -9.5 (Draft Kings)
 \$926 (131) Tennessee +7.5 (Fan Duel)
 \$575 (133) Pittsburgh -5 (Bet Online)
 \$550 (134) West Virginia UNDER 59.5 (Fan Duel)
 \$550 (137) Oregon State OVER 58.5 (Fan Duel)
 \$590 (139) USC -20.5 (Fan Duel)
 \$550 (144) Missouri -21.5 (Draft Kings)
 \$550 (150) Miami, FL -15.5 (ESPN Bet)
 \$550 (157) Ohio +35.5 (Draft Kings)
 \$610 (164) Georgia Southern -2.5 (Fan Duel)
 \$600 (165) Arkansas +7.5 (ESPN Bet)
 \$550 (167) Vanderbilt +7.5 (Fan Duel)
 \$550 (168) So Carolina UNDER 53.5 (Fan Duel)
 \$550 (172) LSU UNDER 52.5 (Fan Duel)
 \$460 (173) Texas A&M +7 (Draft Kings)
 \$390 (173) Texas A&M +7.5 (ESPN Bet)
 \$550 (173) Texas A&M OVER 49.5 (Draft Kings)
 \$550 (175) East Carolina -4 (Draft Kings)
 \$550 (182) Tulsa +15.5 (Draft Kings)
 \$550 (189) Air Force -3 (Draft Kings)
 \$550 (196) California +3.5 (Draft Kings)
 \$550 (196) California UNDER 50.5 (Fan Duel)

Games in Rotation Order

HOME TEAM IN CAPS

Thursday, September 11th

GREEN BAY 26 Washington 23. A great Thursday Night matchup between two of the NFC's best. Both teams got wins and covers over division rivals on Sunday. Green Bay was more impressive with a 5.7-3.8 yards per play edge vs the Lions. Washington did have a dominant 6.6-3.7 ypp edge vs the Giants but the team looked out of sorts at times. We have some back and forth in the market on this one. As of now, we're not involved.

Sunday, September 14th

New England 23 MIAMI 22. Both come in at 0-1. Miami was arguably the most disappointing team in Week 1. The Dolphins were destroyed by the Colts in a game that closed Indy -1. At half-time, Indianapolis had run 43 plays and Miami had 43 yards. We think Mike McDaniels is the most overrated coach in the NFL. Lots of "Ivy League" betting pros swear by the guy because he looks and acts like them. In reality, McDaniels is soft and his team is soft. New England had a disappointing debut as the Pats were clearly outplayed by the Raiders. We trust Vrabel's ability to bounce back over "the nerd".

CINCINNATI 26 Jacksonville 23. Cincinnati had the most fortunate Week 1 win as they got outgained 327-141 and only managed 2.9 yards per play on offense in a 17-16 win over Cleveland. Getting Al Golden as DC did pay off as their defense look improved but they also benefited from a couple of missed Cleveland kicks. Jacksonville easily dispatched Carolina in the debut of HC Coen. We've seen a lot of support for Jacksonville here as the look-ahead line was Cincy -6.5. We lean Jacksonville getting the hook.

BALTIMORE 27 Cleveland 17. Both teams found historic ways to lose football games last week. Cleveland held the Bengals to seven second half yards but still lost. Meanwhile, Baltimore blew a 40-25 lead in the middle of the 4Q. They were the first team in NFL history to lose a game with 40 points and 235 rushing yards. We trust Baltimore to bounce back but this is too steep of a price to lay against a Cleveland defense that held Joe Burrow to 2.9 yards per play last week.

Dallas 26 N.Y. GIANTS 20. The Dallas offense was going up and down the field vs Philadelphia until the weather delay last Thursday. Then they struggled to get first downs. Meanwhile, the Giants offense averaged just 3.7 yards per play in a 21-6 loss to Washington. QB Wilson should not be the starter by mid-season. He's cooked. Career is over. We think Dallas bounces back here but we're not wild about laying the 6.

L.A. Rams 24 TENNESSEE 18. The Rams got a nice win over Houston last week. Now they're traveling across the country to a feeble Tennessee team that managed just 133 yards and 2.4 yards per play. QB Ward had a 7.3 QBR in his first start. That's not good going up against a Rams defense that held the Texans to 9 points. The Rams seem like they will be a very public play. We're passing.

Buffalo 27 N.Y. JETS 22. Both teams were involved in super entertaining Week 1 games. The Jets outplayed the Steelers with a 394-271 yard edge and a 6.4-5.0 yards per play edge. However, they lost 34-32. Meanwhile, the Bills had a miraculous 41-40 come-from-behind win over the Ravens. We like the spot here for the Jets and we're hearing that there is going to be a big buy order on the Jets if the line gets to 7.

DETROIT 26 Chicago 20. Both teams sit at 0-1. Both teams suffered division losses. We trust Detroit to bounce back much more than Chicago. The Bears had yet another typical performance on MNF. They led 17-6 in the fourth quarter then allowed 3 straight TD drives to a Minnesota team with a QB making his first career start. The Lions did look overwhelmed at times at the point of attack vs Green Bay. That's concerning considering that is what they hung their hat on for so many years.

PITTSBURGH 21 Seattle 20. While the scoreboard was close, Seattle did get outgained 384-230 by San Francisco. On the other side, Pittsburgh actually won despite getting outgained 394-271 by the lowly Jets. QB Rodgers did throw 4 TD passes. We're not wild about these West Coast teams playing 10:00am starts early in the season. However, we do think Seattle is the sharper side here. A respected group took them "+3" on Wednesday.

San Francisco 24 NEW ORLEANS 19. Despite losing 20-13 and failing to cover, New Orleans did a little better than expected vs Arizona in the box score. San Francisco is traveling again and is dealing with some injuries at WR. They did get McCaffrey back last week and controlled the box score vs Seattle. The look-ahead line on this game in the summer was San Francisco -7.5 so clearly there has been an adjustment made. Also consider Arizona was laying 5.5 last week at New Orleans. We want to take New Orleans but the price isn't right.

ARIZONA 24 Carolina 18. Bryce Young looked very bad last week in Carolina's 26-10 loss at Jacksonville. Now they are on the road again. We weren't too thrilled with Arizona's performance but they got the win and cover at New Orleans. We have heard whispers that there will be a buy order on Carolina here if the line gets to "+7". We're not interested in the side right now. Lean UNDER.

INDIANAPOLIS 22 Denver 21. Both teams are 1-0. Indianapolis was super impressive in a 33-8 win over Miami as they outgained the Dolphins by more than 200 yards. Meanwhile, Denver overcame several turnovers in a 20-12 win over Tennessee. The Broncos limited rookie QB Ward and the Titans offense to just 133 yards and 2.4 yards per play. The look-ahead line on this game was Denver -3.5 in the summer so there has been an adjustment. We like the Colts especially in a teaser up to +8.

KANSAS CITY 24 Philadelphia 23. A rematch of last year's Super Bowl which saw the Eagles dominate the Chiefs. We weren't impressed with either team in Week 1. The Eagles did get the win but failed to cover vs the Cowboys. DL Jalen Carter set the tone early with one of the dumbest things we've ever seen spitting on Dak even if it was in retaliation. Kansas City was outplayed by the Chargers in a loss. We've seen a market adjustment here with Philly being favored. It's only the second time in 68 career home starts that Patrick Mahomes in an underdog role (lost to Buffalo in 2022). We lean KC here as they avoid but prefer to tease them.

MINNESOTA 24 Atlanta 21. A matchup of two young QB's in Penix and McCarthy. Atlanta probably deserved better last week as they outgained Tampa Bay 358-260. Meanwhile, McCarthy looked overwhelmed in the first three quarters at Chicago on MNF. However, he rebounded and led three 4Q TD drives to get the come-from-behind win. Several orders on Atlanta "+4.5" came in on Wednesday. Also notable was the line movement as Atlanta took a lot of big game-day action vs Tampa. That's where our money is.

Monday, September 15th

HOUSTON 24 Tampa Bay 20. We like Houston to get a bounce back win here. They lost 14-9 in L.A. last week but we didn't downgrade them too much. Meanwhile, Tampa Bay was extremely fortunate in a 23-20 win at Atlanta last week. The Bucs were outgained by nearly 100 yards. Backing 0-1 teams vs 1-0 teams has been a winning trend in the NFL over long periods and that's what we will do here.

L.A. Chargers 24 LAS VEGAS 22. Both teams had impressive week one wins. The Chargers got the upset over the Chiefs in Brazil. There was nothing fluky as they had a 394-347 yard edge and were +0.4 in yards per play. Meanwhile the Raiders controlled matters as they upset the Patriots 20-13. The Raiders were +1.4 in yards per play. Pete Carroll vs Jim Harbaugh go way back to the USC/Stanford days of nearly 20 years ago. We lean with Pete here and we've seen a couple of orders come in on them.

2025 CFB Schedules with Logs

Air Force (SU: 1-0, ATS: 1-0, O/U: 1-0)

Date	Opponent	Line	Score	ATS	O/U
8/30	Bucknell	-32	49-13 W	o54'	
9/6					
9/13	at Utah State				
9/20	Boise State				
9/27	Hawaii				
10/4	at Navy				
10/11	at UNLV				
10/18	Wyoming				
10/25					
11/1	Army				
11/8	at San Jose State				
11/15	at Connecticut				
11/22	New Mexico				
11/28	at Colorado State				
Akron (SU: 0-2, ATS: 0-2, O/U: 1-0)					
Date	Opponent	Line	Score	ATS	O/U
8/28	Wyoming	+5	0-10 L	u48	
9/6	at Nebraska	+33	0-68 L	o47'	
9/13	at UAB				
9/20	Duquesne				
9/27	at Toledo				
10/4	Central Michigan				
10/11	Miami (OH)				
10/18	at Ball State				
10/25	at Buffalo				
11/1					
11/4	Massachusetts				
11/11	Kent State				
11/18	at Bowling Green				
11/29					

Alabama (SU: 1-1, ATS: 1-1, O/U: 2-0)

Date	Opponent	Line	Score	ATS	O/U
8/30	at Florida State	-13'	17-31 L	o47'	
9/6	UL-Monroe	-34'	73-0 W	o49	
9/13	Wisconsin				
9/20					
9/27	at Georgia				
10/4	Vanderbilt				
10/11	at Missouri				
10/18	Tennessee				
10/25	at South Carolina				
11/1					
11/8	LSU				
11/15	Oklahoma				
11/22	Eastern Illinois				
11/29	at Auburn				
Appalachian St (SU: 2-0, ATS: 1-1, O/U: 0-2)					
Date	Opponent	Line	Score	ATS	O/U
8/29	† Charlotte	-3	34-11 W	u48'	
9/6	Lindenwood	-31'	20-13 L	u56'	
9/13	at Southern Miss				
9/20					
9/27	at Boise State				
10/4	Oregon State				
10/11	at Georgia State				
10/18	Coastal Carolina				
10/25	at Old Dominion				
11/1					
11/6	Georgia Southern				
11/15	at James Madison				
11/22	Marshall				
11/29	Arkansas State				
Arizona (SU: 2-0, ATS: 2-0, O/U: 0-2)					
Date	Opponent	Line	Score	ATS	O/U
8/30	Hawaii	-15'	40-6 W	u55	
9/6	Weber State	-32	48-3 W	u56'	
9/12	Kansas State				
9/20					
9/27	at Iowa State				
10/4	Oklahoma State				
10/11	BYU				
10/18	at Houston				
10/25					
11/1	at Colorado				
11/8	Kansas				
11/15	at Cincinnati				
11/22	Baylor				
11/28	at Arizona State				
Arizona State (SU: 1-1, ATS: 0-2, O/U: 1-0)					
Date	Opponent	Line	Score	ATS	O/U
8/30	Northern Arizona	-30'	38-19 L	o52'	
9/6	at Mississippi St	-6	20-24 L	u59	
9/13	Texas State				
9/20	at Baylor				
9/26	TCU				
10/4					
10/11	at Utah				
10/18	Texas Tech				
10/25	Houston				
11/1	at Iowa State				
11/8					
11/15	West Virginia				
11/22	at Colorado				
11/28	Arizona				

Arkansas (SU: 2-0, ATS: 1-1, O/U: 1-0)

Date	Opponent	Line	Score	ATS	O/U
8/30	Alabama A&M	-48	52-7 L	u64'	
9/6	Arkansas State	-23'	56-14 W	o62	
9/13	at Ole Miss				
9/20	at Memphis				
9/27	Notre Dame				
10/4					
10/11	at Tennessee				
10/18	Texas A&M				
10/25	Auburn				
11/1	Mississippi State				
11/8					
11/15	at LSU				
11/22	at Texas				
11/29	Missouri				

Arkansas State (SU: 1-1, ATS: 1-1, O/U: 2-0)

Date	Opponent	Line	Score	ATS	O/U
8/30	SE Missouri St	-14	42-24 W	o60	
9/6	at Arkansas	+23'	14-56 L	o62	
9/13	Iowa State				
9/20	at Kennesaw State				
9/27	at UL-Monroe				
10/4	Texas State				
10/11					
10/14	at South Alabama				
10/25	Georgia Southern				
11/1	at Troy				
11/8	Southern Miss				
11/15					
11/20	UL-Lafayette				
11/29	at Appalachian State				
Army (SU: 1-1, ATS: 1-1, O/U: 1-0)					
Date	Opponent	Line	Score	ATS	O/U
8/29	Tarleton St-2ot	-14	27-30 L	o47	
9/6	at Kansas State	+17	24-21 W	u48	
9/13					
9/20	North Texas				
9/25	at East Carolina				
10/4	at UAB				
10/11	Charlotte				
10/18	at Tulane				
10/25					
11/1	at Air Force				
11/8	Temple				
11/15					
11/22	Tulsa				
11/28	at UTSA				
12/6					
12/13	† Navy				

Auburn (SU: 2-0, ATS: 1-1, O/U: 1-1)

Date	Opponent	Line	Score	ATS	O/U
8/29	at Baylor	-1	38-24 W	o57	
9/6	Ball State	-42'	42-3 L	u52'	
9/13	South Alabama				
9/20	at Oklahoma				
9/27	at Texas A&M				
10/4					
10/11	Georgia				
10/18	Missouri				
10/25	at Arkansas				
11/1	Kentucky				
11/8	at Vanderbilt				
11/15					
11/22	Mercer				
11/29	Alabama				

Ball State (SU: 0-2, ATS: 1-1, O/U: 0-2)

Date	Opponent	Line	Score	ATS	O/U
8/30	at Purdue	+16	0-31 L	u48'	
9/6	at Auburn	+42'	3-42 W	u52'	
9/13	New Hampshire				
9/20	at Connecticut				
9/27					
10/4	Ohio				
10/11	at Western Michigan				
10/18	Akron				
10/25	at Northern Illinois				
11/1					
11/5	Kent State				
11/15	Eastern Michigan				
11/22	at Toledo				
11/29	at Miami (OH)				

Baylor (SU: 1-1, ATS: 1-1, O/U: 2-0)

Date	Opponent	Line	Score	ATS	O/U
8/29	Auburn	+1	24-38 L	o57	
9/6	at SMU-2ot	+3	48-45 W	o65'	
9/13	Samford				
9/20	Arizona State				
9/27	at Oklahoma State				
10/4	Kansas State				
10/11					
10/18	at TCU				
10/25	at Cincinnati				
11/1	UCF				
11/8					
11/15	Utah				
11/22	at Arizona				
11/29	Houston				

Boise State (SU: 1-1, ATS: 1-1, O/U: 1-0)

Date	Opponent	Line	Score	ATS	O/U
8/28	at USF	-4'	7-34 L	u61	
9/5	East Washington	-33	51-14 W	o60'	
9/13					
9/20	at Air Force				
9/27	Appalachian State				
10/4	at Notre Dame				
10/11	New Mexico				
10/18	UNLV				
10/24	at Nevada				
11/1	Fresno State				
11/8					
11/15	at San Diego State				
11/22	Colorado State				
11/28	at Utah State				

Boston College (SU: 1-1, ATS: 2-0, O/U: 2-0)

Date	Opponent	Line	Score	ATS	O/U
8/30	Fordham	-35	66-10 W	o53'	
9/6	at Mich St-2ot	+3'	40-42 W	o45'	
9/13	at Stanford				
9/20					
9/27	California				
10/4	at Pittsburgh				
10/11	Clemson				
10/18	Connecticut				
10/25	at Louisville				
11/1	Notre Dame				
11/8	SMU				
11/15	Georgia Tech				
11/22					
11/29	at Syracuse				

Bowling Green (SU: 1-1, ATS: 1-1, O/U: 1-0)

Date	Opponent	Line	Score	ATS	O/U
8/28	Lafayette	-21'	26-7 L	u53'	
9/6	at Cincinnati	+22'	20-34 W	o46'	
9/13	Liberty				
9/20	at Louisville				
9/27	at Ohio				
10/4					
10/11	Toledo				
10/18	Central Michigan				
10/25	at Kent State				
11/1	Buffalo				
11/8	at Eastern Michigan				
11/15					
11/18	Akron				
11/25	at Massachusetts				
Buffalo (SU: 1-1, ATS: 2-0, O/U: 1-0)					
Date	Opponent	Line	Score	ATS	O/U
8/28	at Minnesota	+16'	10-23 W	u42'	
9/6	at Saint Francis	-38	45-6 W	o48'	
9/13	at Kent State				
9/20	Troy				
9/27	Connecticut				
10/4	Eastern Michigan				
10/11					
10/18	at Massachusetts				
10/25	Akron				
11/1	at Bowling Green				
11/8					
11/12	at Central Michigan				
11/19	Miami (OH)				
11/28	Ohio				

BYU (SU: 2-0, ATS: 2-0, O/U: 1-0)

Date	Opponent	Line	Score	ATS	O/U
8/30	Portland State	-43'	69-0 W	o62'	
9/6	Stanford	-20'	27-3 W	u44'	
9/13					
9/20	at East Carolina				
9/27	at Colorado				
10/3	West Virginia				
10/11	at Arizona				
10/18	Utah				
10/25	at Iowa State				
11/1					
11/8	at Texas Tech				
11/15	TCU				
11/22	at Cincinnati				
11/29	UCF				

California (SU: 2-0, ATS: 1-1, O/U: 1-0)

Date	Opponent	Line	Score	ATS	O/U
8/30	at Oregon State	-2'	34-15 W	o48'	
9/6	Texas Southern	-44'	35-3 L	u54	
9/13	Minnesota				
9/20	at San Diego State				
9/27	at Boston College				
10/4	Duke				
10/11					
10/17	North Carolina				
10/24	at Virginia Tech				
11/1	Virginia				
11/8	at Louisville				
11/15					
11/22	at Stanford				
11/29	SMU				

Georgia (ISU: 2-0, ATS: 0-2, O/U: 1-1)

Date	Opponent	Line	Score	ATS/O/U
8/30	Marshall	-38'	45-7 L	o51'
9/6	Austin Peay	-46'	28-6 L	u56'
9/13	at Tennessee			
9/20				
9/27	Alabama			
10/4	Kentucky			
10/11	at Auburn			
10/18	Ole Miss			
10/25				
11/1	† Florida			
11/8	at Mississippi State			
11/15	Texas			
11/22	Charlotte			
11/28	† Georgia Tech			

Georgia Southern (ISU: 0-2, ATS: 0-2, O/U: 2-0)

Date	Opponent	Line	Score	ATS/O/U
8/30	at Fresno State	+1	14-42 L	o49'
9/6	at USC	+29	20-59 L	o62
9/13	Jacksonville State			
9/20	Maine			
9/27	at James Madison			
10/4				
10/9	Southern Miss			
10/18	Georgia State			
10/25	at Arkansas State			
11/1				
11/6	at Appalachian State			
11/15	Coastal Carolina			
11/22	Old Dominion			
11/29	at Marshall			

Georgia State (ISU: 0-2, ATS: 0-2, O/U: 1-1)

Date	Opponent	Line	Score	ATS/O/U
8/30	at Ole Miss	+33'	7-63 L	o60'
9/6	Memphis	+14'	16-38 L	u57'
9/13	Murray State			
9/20	at Vanderbilt			
9/27				
10/4	James Madison			
10/11	Appalachian State			
10/18	at Georgia Southern			
10/23	South Alabama			
11/1				
11/8	at Coastal Carolina			
11/15	Marshall			
11/22	at Troy			
11/29	at Old Dominion			

Georgia Tech (ISU: 2-0, ATS: 2-0, O/U: 1-1)

Date	Opponent	Line	Score	ATS/O/U
8/29	at Colorado	-3'	27-20 W	u50
9/6	Gardner-Webb	-37'	59-12 W	o60
9/13	Clemson			
9/20	Temple			
9/27	at Wake Forest			
10/4				
10/11	Virginia Tech			
10/18	at Duke			
10/25	Syracuse			
11/1	at NC State			
11/8				
11/15	at Boston College			
11/22	Pittsburgh			
11/28	† Georgia			

Hawaii (ISU: 2-1, ATS: 2-1, O/U: 1-2)

Date	Opponent	Line	Score	ATS/O/U
8/23	Stanford	-2'	23-20 W	u50
8/30	at Arizona	+15'	6-40 L	u55
9/6	Sam Houston St	-7	37-20 W	o48'
9/13	Portland State			
9/20	Fresno State			
9/27	at Air Force			
10/4				
10/11	Utah State			
10/18	at Colorado State			
10/25				
11/1	at San Jose State			
11/8	San Diego State			
11/15				
11/21	at UNLV			
11/29	Wyoming			

Houston (ISU: 2-0, ATS: 2-0, O/U: 1-1)

Date	Opponent	Line	Score	ATS/O/U
8/28	Steph. F. Austin	-24	27-0 W	u54'
9/6	at Rice	-13'	35-9 W	o38'
9/12	Colorado			
9/20				
9/27	at Oregon State			
10/4	Texas Tech			
10/11	at Oklahoma State			
10/18	Arizona			
10/25	at Arizona State			
11/1	West Virginia			
11/7	at UCF			
11/15				
11/22	TCU			
11/29	at Baylor			

Illinois (ISU: 2-0, ATS: 2-0, O/U: 1-1)

Date	Opponent	Line	Score	ATS/O/U
8/29	Western Illinois	-48'	52-3 W	u62'
9/6	at Duke	-2'	45-19 W	o49
9/13	Western Michigan			
9/20	at Indiana			
9/27	USC			
10/4	at Purdue			
10/11	Ohio State			
10/18				
10/25	at Washington			
11/1	Rutgers			
11/8				
11/15	Maryland			
11/22	at Wisconsin			
11/29	Northwestern			

Indiana (ISU: 2-0, ATS: 1-1, O/U: 1-1)

Date	Opponent	Line	Score	ATS/O/U
8/30	Old Dominion	-23'	27-14 L	u53'
9/6	Kennesaw State	-35'	56-9 W	o51'
9/12	Indiana State			
9/20	Illinois			
9/27	at Iowa			
10/4				
10/11	at Oregon			
10/18	Michigan State			
10/25	UCLA			
11/1	at Maryland			
11/8	at Penn State			
11/15	Wisconsin			
11/22				
11/28	at Purdue			

Iowa State (ISU: 1-1, ATS: 0-1-1, O/U: 0-2)

Date	Opponent	Line	Score	ATS/O/U
8/30	Albany	-39'	34-7 L	u48'
9/6	at Iowa State	+3	13-16 P	u43
9/13	Massachusetts			
9/19	at Rutgers			
9/27	Indiana			
10/4				
10/11	at Wisconsin			
10/18	Penn State			
10/25	Minnesota			
11/1				
11/8	Oregon			
11/15	at USC			
11/22	Michigan State			
11/28	at Nebraska			

Iowa State (ISU: 3-0, ATS: 2-0-1, O/U: 1-2)

Date	Opponent	Line	Score	ATS/O/U
8/23	† Kansas State	+3	24-21 W	u51'
8/30	South Dakota	-16	55-7 W	o47'
9/6	Iowa	-3	16-13 P	u43
9/13	at Arkansas State			
9/20				
9/27	Arizona			
10/4	at Cincinnati			
10/11	at Colorado			
10/18				
10/25	BYU			
11/1	Arizona State			
11/8	at TCU			
11/15				
11/22	Kansas			
11/29	at Oklahoma State			

Jacksonville State (ISU: 1-1, ATS: 2-0, O/U: 1-1)

Date	Opponent	Line	Score	ATS/O/U
8/28	at UCF	+20'	10-17 W	u53
9/6	Liberty	+6	34-24 W	o50'
9/13	at Georgia Southern			
9/20	Murray State			
9/27	at Southern Miss			
10/4				
10/9	at Sam Houston State			
10/15	Delaware			
10/25				
10/29	at Middle Tennessee			
11/8	at UTEP			
11/15	Kennesaw State			
11/22	at FIU			
11/29	Western Kentucky			

James Madison (ISU: 1-1, ATS: 2-0, O/U: 0-2)

Date	Opponent	Line	Score	ATS/O/U
8/30	Weber State	-26'	45-10 W	u55'
9/6	at Louisville	+15'	14-28 W	u56'
9/13				
9/20	at Liberty			
9/27	Georgia Southern			
10/4	at Georgia State			
10/11	UL-Lafayette			
10/18	Old Dominion			
10/25				
10/28	at Texas State			
11/8	at Marshall			
11/15	Appalachian State			
11/22	Washington State			
11/29	at Coastal Carolina			

Kansas (ISU: 2-1, ATS: 1-2, O/U: 1-2)

Date	Opponent	Line	Score	ATS/O/U
8/23	Fresno State	-14	31-7 W	u50
8/29	Wagner	-45'	46-7 L	u57
9/6	at Missouri	+5'	31-42 L	o51
9/13				
9/20	West Virginia			
9/27	Cincinnati			
10/4	at UCF			
10/11	at Texas Tech			
10/18				
10/25	Kansas State			
11/1	Oklahoma State			
11/8	at Arizona			
11/15				
11/22	at Iowa State			
11/28	Utah			

Kansas State (ISU: 1-2, ATS: 0-3, O/U: 1-2)

Date	Opponent	Line	Score	ATS/O/U
8/23	† Iowa State	-3	21-24 L	u51'
8/30	North Dakota	-27'	38-35 L	o55'
9/6	Army	-17	21-24 L	u48
9/12	at Arizona			
9/20				
9/27	UCF			
10/4	at Baylor			
10/11	TCU			
10/18				
10/25	at Kansas			
11/1	Texas Tech			
11/8				
11/15	at Oklahoma State			
11/22	at Utah			
11/29	Colorado			

Kennesaw State (ISU: 0-2, ATS: 1-1, O/U: 1-1)

Date	Opponent	Line	Score	ATS/O/U
8/29	at Wake Forest	+18'	9-10 W	u51'
9/6	at Indiana	+35'	9-56 L	o51'
9/13	Merrimack			
9/20	Arkansas State			
9/27	Middle Tennessee			
10/4				
10/9	Louisiana Tech			
10/18				
10/21	at FIU			
10/28	UTEP			
11/8	at New Mexico State			
11/15	at Jacksonville State			
11/22	Missouri State			
11/29	at Liberty			

Kent State (ISU: 1-1, ATS: 0-2, O/U: 1-1)

Date	Opponent	Line	Score	ATS/O/U
8/30	Merrimack	-5	21-17 L	u50'
9/6	at Texas Tech	+47'	14-62 L	o60
9/13	Buffalo			
9/20	at Florida State			
9/27				
10/4	at Oklahoma			
10/11	Massachusetts			
10/18	at Toledo			
10/25	Bowling Green			
11/1				
11/5	at Ball State			
11/11	at Akron			
11/19	Central Michigan			
11/28	at Northern Illinois			

Kentucky (ISU: 1-1, ATS: 1-1, O/U: 1-1)

Date	Opponent	Line	Score	ATS/O/U
8/30	Toledo	-10	24-16 L	u49
9/6	Ole Miss	+8	23-30 W	o51
9/13	Eastern Michigan			
9/20				
9/27	at South Carolina			
10/4	at Georgia			
10/11				
10/18	Texas			
10/25	Tennessee			
11/1	at Auburn			
11/8	Florida			
11/15	Tennessee Tech			
11/22	at Vanderbilt			
11/29	at Louisville			

Liberty (ISU: 1-1, ATS: 0-2, O/U: 1-1)

Date	Opponent	Line	Score	ATS/O/U
8/30	Maine	-25'	28-7 L	u51'
9/6	at Jacksonville St-6	24-34 L	o50'	
9/13	at Bowling Green			
9/20	James Madison			
9/27	at Old Dominion			
10/4				
10/8	at UTEP			
10/14	New Mexico State			
10/25				
11/1	Delaware			
11/8	Missouri State			
11/15	at FIU			
11/22	at Louisiana Tech			
11/29	Kennesaw State			

Louisiana Tech (ISU: 1-1, ATS: 2-0, O/U: 0-2)

Date	Opponent	Line	Score	ATS/O/U
8/30	SE Louisiana	-14'	24-0 W	u50'
9/6	at LSU	+36	7-23 L	u50
9/13	New Mexico State			
9/20	Southern Miss			
9/27	at UTEP			
10/4				
10/9	at Kennesaw State			
10/18				
10/21	Western Kentucky			
10/28	Sam Houston State			
11/8	at Delaware			
11/15	at Washington State			
11/22	Liberty			
11/29	at Missouri State			

Louisville (ISU: 2-0, ATS: 0-2, O/U: 1-1)

Date	Opponent	Line	Score	ATS/O/U
8/30	Eastern Kentucky	-38'	51-17 L	o56'
9/6	James Madison	-15'	28-14 L	u56
9/13				
9/20	Bowling Green			
9/27	at Pittsburgh			
10/4	Virginia			
10/11				
10/17	at Miami (FL)			
10/25	Boston College			
11/1	at Virginia Tech			
11/8	California			
11/14	Clemson			
11/22	at SMU			
11/29	Kentucky			

LSU (ISU: 2-0, ATS: 1-1, O/U: 0-2)

Date	Opponent	Line	Score
------	----------	------	-------

NC State (SU: 2-0, ATS: 1-1, O/U: 1-1)			
Date	Opponent	Line Score	ATS/O/U
8/28	East Carolina	-13' 24-17 L	u61'
9/6	Virginia	-3 35-31 W	o53'
9/11	at Wake Forest		
9/20	at Duke		
9/27	Virginia Tech		
10/4	Campbell		
10/11	at Notre Dame		
10/18			
10/25	at Pittsburgh		
11/1	Georgia Tech		
11/8			
11/15	at Miami (FL)		
11/21	Florida State		
11/29	North Carolina		

Nebraska (SU: 2-0, ATS: 1-1, O/U: 1-1)			
Date	Opponent	Line Score	ATS/O/U
8/28	† Cincinnati	-6 20-17 L	u50'
9/6	Akron	-33' 68-0 W	o47'
9/11	Houston Christian		
9/20	Michigan		
9/27			
10/4	Michigan State		
10/11	at Maryland		
10/17	at Minnesota		
10/25	Northwestern		
11/1	USC		
11/8	at UCLA		
11/15			
11/22	at Penn State		
11/29	Iowa		

Nevada (SU: 1-1, ATS: 1-1, O/U: 1-1)			
Date	Opponent	Line Score	ATS/O/U
8/30	at Penn State	+42' 11-46 W	o54'
9/6	Sacramento St	-7 20-17 L	u55'
9/11	Middle Tennessee		
9/20	at Western Kentucky		
9/27			
10/4	at Fresno State		
10/11	San Diego State		
10/18	at New Mexico		
10/24	Boise State		
11/1			
11/8	at Utah State		
11/15	San Jose State		
11/22	at Wyoming		
11/29	UNLV		

New Mexico (SU: 1-1, ATS: 1-1, O/U: 1-1)			
Date	Opponent	Line Score	ATS/O/U
8/30	at Michigan	+34' 17-34 W	o49'
9/6	Idaho State	-18' 32-22 L	u60'
9/12	at UCLA		
9/20			
9/27	New Mexico State		
10/3	at San Jose State		
10/11	at Boise State		
10/18	Nevada		
10/25	Utah State		
11/1	at UNLV		
11/8			
11/15	Colorado State		
11/22	at Air Force		
11/28	San Diego State		

New Mexico State (SU: 2-0, ATS: 1-1, O/U: 0-2)			
Date	Opponent	Line Score	ATS/O/U
8/30	Bryant	-19' 19-3 L	u53'
9/6	Tulsa	+3 21-14 W	u52'
9/11	at Louisiana Tech		
9/20			
9/27	at New Mexico		
10/2	Sam Houston State		
10/11			
10/14	at Liberty		
10/22	Missouri State		
11/1	at Western Kentucky		
11/8	Kennesaw State		
11/15	at Tennessee		
11/22	at UTEP		
11/29	Middle Tennessee		

North Carolina (SU: 1-1, ATS: 1-1, O/U: 1-1)			
Date	Opponent	Line Score	ATS/O/U
9/1	TCU	+3' 14-48 L	o55'
9/6	at Charlotte	-14' 20-3 W	u49'
9/11	Richmond		
9/20	at UCF		
9/27			
10/4	Clemson		
10/11			
10/17	at California		
10/25	Virginia		
10/31	at Syracuse		
11/8	Stanford		
11/15	at Wake Forest		
11/22	Duke		
11/29	at NC State		

North Texas (SU: 2-0, ATS: 1-1, O/U: 1-1)			
Date	Opponent	Line Score	ATS/O/U
8/30	Lamar	-27' 51-0 W	u63'
9/6	at West Mich-ot	-11' 33-30 L	o56'
9/11	Washington State		
9/20	at Army		
9/27	South Alabama		
10/4			
10/18	USF		
10/18	UTSA		
10/24	at Charlotte		
11/1	Navy		
11/8			
11/15	at UAB		
11/22	at Rice		
11/28	Temple		

Northern Illinois (SU: 1-1, ATS: 1-1, O/U: 0-2)			
Date	Opponent	Line Score	ATS/O/U
8/30	Holy Cross	-13' 19-17 L	u49'
9/5	at Maryland	+16' 9-20 W	u45'
9/13			
9/20	at Mississippi State		
9/27	San Diego State		
10/4	Miami (OH)		
10/11	at Eastern Michigan		
10/18	at Ohio		
10/25	Ball State		
11/1			
11/5	at Toledo		
11/12	at Massachusetts		
11/18	Western Michigan		
11/28	Kent State		

Northwestern (SU: 1-1, ATS: 1-1, O/U: 1-1)			
Date	Opponent	Line Score	ATS/O/U
8/30	at Tulane	+6 3-23 L	u45'
9/5	Western Illinois	-31' 42-7 W	o48'
9/11	Oregon		
9/20			
9/27	UCLA		
10/4	UL-Monroe		
10/11	at Penn State		
10/18	Purdue		
10/25	at Nebraska		
11/1			
11/7	at USC		
11/15	Michigan		
11/22	Minnesota		
11/29	at Illinois		

Notre Dame (SU: 0-1, ATS: 0-1, O/U: 1-0)			
Date	Opponent	Line Score	ATS/O/U
8/31	at Miami (FL)	-3 24-27 L	o50'
9/6			
9/13	Texas A&M		
9/20	Purdue		
9/27	at Arkansas		
10/4	Boise State		
10/11	NC State		
10/18	USC		
10/25			
11/1	at Boston College		
11/8	Navy		
11/15	at Pittsburgh		
11/22	Syracuse		
11/29	at Stanford		

Ohio (SU: 1-1, ATS: 2-0, O/U: 1-1)			
Date	Opponent	Line Score	ATS/O/U
8/28	at Rutgers	+15' 31-34 W	o52'
9/6	West Virginia	+3' 17-10 W	u58'
9/13	at Ohio State		
9/20	Gardner-Webb		
9/27	Bowling Green		
10/4	at Ball State		
10/11			
10/18	Northern Illinois		
10/25	at Eastern Michigan		
11/1			
11/4	Miami (OH)		
11/11	at Western Michigan		
11/18	Massachusetts		
11/28	at Buffalo		

Ohio State (SU: 2-0, ATS: 2-0, O/U: 1-1)			
Date	Opponent	Line Score	ATS/O/U
8/30	Texas	-1' 14-7 W	u46'
9/6	Grambling State	-54' 70-0 W	o62'
9/13	Ohio		
9/20			
9/27	at Washington		
10/4	Minnesota		
10/11	at Illinois		
10/18	at Wisconsin		
10/25			
11/1	Penn State		
11/8	at Purdue		
11/15	UCLA		
11/22	Rutgers		
11/29	at Michigan		

Oklahoma (SU: 2-0, ATS: 1-1, O/U: 0-2)			
Date	Opponent	Line Score	ATS/O/U
8/30	Illinois State	-40' 35-3 L	u60'
9/6	Michigan	-4 24-13 W	u44'
9/13	at Temple		
9/20	Auburn		
9/27			
10/4	Kent State		
10/11	† Texas		
10/18	at South Carolina		
10/25	Ole Miss		
11/1	at Tennessee		
11/8			
11/15	at Alabama		
11/22	Missouri		
11/29	LSU		

Oklahoma State (SU: 1-1, ATS: 0-2, O/U: 1-1)			
Date	Opponent	Line Score	ATS/O/U
8/28	UT-Martin	-26' 27-7 L	u56'
9/6	at Oregon	+28' 3-69 L	o55'
9/13			
9/19	Tulsa		
9/27	Baylor		
10/4	at Arizona		
10/11	Houston		
10/18	Cincinnati		
10/25	at Texas Tech		
11/1	at Kansas		
11/8			
11/15	Kansas State		
11/22	at UCF		
11/29	Iowa State		

Old Dominion (SU: 1-1, ATS: 2-0, O/U: 1-1)			
Date	Opponent	Line Score	ATS/O/U
8/30	at Indiana	+23' 14-27 W	u53'
9/6	NC Central	-21' 54-6 W	o50'
9/13	at Virginia Tech		
9/20			
9/27	Liberty		
10/4	Coastal Carolina		
10/11	at Marshall		
10/18	at James Madison		
10/25	Appalachian State		
11/1	at UL-Monroe		
11/8			
11/13	Troy		
11/22	at Georgia Southern		
11/29	Georgia State		

Ole Miss (SU: 2-0, ATS: 1-1, O/U: 2-0)			
Date	Opponent	Line Score	ATS/O/U
8/30	Georgia State	-33' 63-7 W	o60'
9/6	at Kentucky	-8 30-23 L	o51'
9/13	Arkansas		
9/20	Tulane		
9/27	LSU		
10/4			
10/11	Washington State		
10/18	at Georgia		
10/25	at Oklahoma		
11/1	South Carolina		
11/8	The Citadel		
11/15	Florida		
11/22			
11/29	at Mississippi State		

Oregon (SU: 2-0, ATS: 2-0, O/U: 2-0)			
Date	Opponent	Line Score	ATS/O/U
8/30	Montana State	-29' 59-13 W	o56'
9/6	Oklahoma State	-28' 69-3 W	o55'
9/13	at Northwestern		
9/20	Oregon State		
9/27	at Penn State		
10/4			
10/11	Indiana		
10/18	at Rutgers		
10/25	Wisconsin		
11/1			
11/8	at Iowa		
11/14	Minnesota		
11/22	USC		
11/29	at Washington		

Oregon State (SU: 0-2, ATS: 0-2, O/U: 1-1)			
Date	Opponent	Line Score	ATS/O/U
8/30	California	+2' 15-34 L	o48'
9/6	Fresno State	-1 27-36 L	o45'
9/13	at Texas Tech		
9/20	at Oregon		
9/27	Houston		
10/4	at Appalachian State		
10/11	Wake Forest		
10/18	Lafayette		
10/25			
11/1	Washington State		
11/8	Sam Houston State		
11/15	at Tulsa		
11/22			
11/29	at Washington State		

Penn State (SU: 2-0, ATS: 2-0, O/U: 1-1)			
Date	Opponent	Line Score	ATS/O/U
8/30	Nevada	-42' 46-11 L	o54'
9/6	FIU	-42 34-0 L	u53'
9/13	Villanova		
9/20			
9/27	Oregon		
10/4	at UCLA		
10/11	Northwestern		
10/18	at Iowa		
10/25			
11/1	at Ohio State		
11/8	Indiana		
11/15	at Michigan State		
11/22	Nebraska		
11/29	at Rutgers		

Pittsburgh (SU: 2-0, ATS: 2-0, O/U: 2-0)			
Date	Opponent	Line Score	ATS/O/U
8/30	Duquesne	-40' 61-9 W	o58'
9/6	Central Michigan	-21 45-17 W	u48'
9/13	at West Virginia		
9/20			
9/27	Louisville		
10/4	Boston College		
10/11	at Florida State		
10/18	at Syracuse		
10/25	NC State		
11/1	at Stanford		
11/8			
11/15	Notre Dame		
11/22	at Georgia Tech		
11/29	Miami (FL)		

Purdue (SU: 2-0, ATS: 1-1, O/U: 0-2)			
Date	Opponent	Line Score	ATS/O/U
8/30	Ball State	-16' 31-0 W	u48'
9/6	Southern Illinois	-20 34-17 L	u52'
9/13	USC		
9/20	at Notre Dame		
9/27			
10/4	Illinois		
10/11	at Minnesota		
10/18	at Northwestern		
10/25	Rutgers		
11/1	at Michigan		
11/8	Ohio State		
11/15	at Washington		
11/22			
11/28	Indiana		

Texas (SU: 1-1, ATS: 0-2, O/U: 0-2)

Date	Opponent	Line	Score	ATS/O/U
8/30	at Ohio State	+1'	7-14 L	u46'
9/6	San Jose State	-36'	38-7 L	u52'
9/13	UTEP			
9/20	Sam Houston State			
9/27				
10/4	at Florida			
10/11	† Oklahoma			
10/18	at Kentucky			
10/25	at Mississippi State			
11/1	Vanderbilt			
11/8				
11/15	at Georgia			
11/22	Arkansas			
11/29	Texas A&M			

Texas A&M (SU: 2-0, ATS: 0-2, O/U: 2-0)

Date	Opponent	Line	Score	ATS/O/U
8/30	UTSA	-23'	42-24 L	o58'
9/6	Utah State	-34'	44-22 L	o57'
9/13	at Notre Dame			
9/20				
9/27	Auburn			
10/4	Mississippi State			
10/11	Florida			
10/18	at Arkansas			
10/25	at LSU			
11/1				
11/8	at Missouri			
11/15	South Carolina			
11/22	Samford			
11/29	at Texas			

Texas Tech (SU: 2-0, ATS: 2-0, O/U: 2-0)

Date	Opponent	Line	Score	ATS/O/U
8/30	Eastern Michigan	-14	52-27 W	o56'
9/6	at UTSA	+4'	43-36 W	o64'
9/13	at Arizona State			
9/20	Nicholls State			
9/27				
10/4	at Arkansas State			
10/11	Troy			
10/18	at Marshall			
10/25				
10/28	James Madison			
11/8	at UL-Lafayette			
11/15	at Southern Miss			
11/22	UL-Monroe			
11/29	South Alabama			

Texas Tech (SU: 2-0, ATS: 1-0, O/U: 1-0)

Date	Opponent	Line	Score	ATS/O/U
8/30	Ark Pine-Bluff	-54'	67-7 C	62'
9/6	Kent State	-47'	62-14 W	o60
9/13	Oregon State			
9/20	at Utah			
9/27				
10/4	at Houston			
10/11	Kansas			
10/18	at Arizona State			
10/25	Oklahoma State			
11/1	at Kansas State			
11/8	BYU			
11/15	UCF			
11/22				
11/29	at West Virginia			

Toledo (SU: 1-1, ATS: 2-0, O/U: 1-1)

Date	Opponent	Line	Score	ATS/O/U
8/30	at Kentucky	+10	16-24 W	u49
9/6	W. Kentucky	-8	45-21 W	o57'
9/13	Morgan State			
9/20	at Western Michigan			
9/27	Akron			
10/4				
10/11	at Bowling Green			
10/18	Kent State			
10/25	at Washington State			
11/1				
11/5	Northern Illinois			
11/12	at Miami (OH)			
11/22	Ball State			
11/29	at Central Michigan			

Troy (SU: 1-1, ATS: 1-1, O/U: 1-1)

Date	Opponent	Line	Score	ATS/O/U
8/30	Nicholls State	-20	38-21 L	o48'
9/6	at Clemson	+31	16-27 W	u51'
9/13	Memphis			
9/20	at Buffalo			
9/27				
10/4	South Alabama			
10/11	at Texas State			
10/18	at UL-Monroe			
10/25	UL-Lafayette			
11/1	Arkansas State			
11/8				
11/13	at Old Dominion			
11/22	Georgia State			
11/29	at Southern Miss			

Tulane (SU: 2-0, ATS: 1-1, O/U: 1-1)

Date	Opponent	Line	Score	ATS/O/U
8/30	Northwestern	-6	23-3 W	u45'
9/6	at South Alabama	-13'	33-31 L	o51
9/13	Duke			
9/20	at Ole Miss			
9/27	at Tulsa			
10/4				
10/9	East Carolina			
10/18	Army			
10/25				
10/30	at UTSA			
11/7	at Memphis			
11/15	Florida Atlantic			
11/22	at Temple			
11/29	Charlotte			

Tulsa (SU: 1-1, ATS: 1-1, O/U: 0-2)

Date	Opponent	Line	Score	ATS/O/U
8/30	Abilene Christian	-5'	35-7 W	u59'
9/6	at New Mexico St	-3	14-21 L	u52'
9/13	Navy			
9/19	at Oklahoma State			
9/27	Tulane			
10/4	at Memphis			
10/11				
10/16	at East Carolina			
10/25	Temple			
11/1				
11/8	at Florida Atlantic			
11/15	Oregon State			
11/22	at Army			
11/29	UAB			

UAB (SU: 1-1, ATS: 1-1, O/U: 2-0)

Date	Opponent	Line	Score	ATS/O/U
8/28	Alabama State	-21'	52-42 L	o53'
9/6	at Navy	+20'	24-38 W	o59
9/13	Akron			
9/20	at Tennessee			
9/27				
10/4	Army			
10/11	at Florida Atlantic			
10/18	Memphis			
10/25				
11/1	at Connecticut			
11/8	at Rice			
11/15	North Texas			
11/22	USF			
11/29	at Tulsa			

UCF (SU: 2-0, ATS: 1-1, O/U: 1-1)

Date	Opponent	Line	Score	ATS/O/U
8/28	Jacksonville St	-20'	17-10 L	u53
9/6	NC A&T	-37'	68-7 W	o51'
9/13				
9/20	North Carolina			
9/27	at Kansas State			
10/4	Kansas			
10/11	at Cincinnati			
10/18	West Virginia			
10/25				
11/1	at Baylor			
11/7	Houston			
11/15	at Texas Tech			
11/22	Oklahoma State			
11/29	at BYU			

UCLA (SU: 0-2, ATS: 0-2, O/U: 1-1)

Date	Opponent	Line	Score	ATS/O/U
8/30	Utah	+6'	10-43 L	o48'
9/6	at UNLV	-2'	23-30 L	u54
9/12	New Mexico			
9/20				
9/27	at Northwestern			
10/4	Penn State			
10/11	at Michigan State			
10/18	Maryland			
10/25	at Indiana			
11/1				
11/8	Nebraska			
11/15	at Ohio State			
11/22	Washington			
11/29	at USC			

UL-Lafayette (SU: 1-1, ATS: 1-1, O/U: 0-2)

Date	Opponent	Line	Score	ATS/O/U
8/30	Rice	-10	12-14 L	u48'
9/6	McNeese State	-19	34-10 W	u50
9/13	at Missouri			
9/20	at Eastern Michigan			
9/27	Marshall			
10/4				
10/11	at James Madison			
10/18	Southern Miss			
10/25	at Troy			
11/1	at South Alabama			
11/8	Texas State			
11/15				
11/20	at Arkansas State			
11/29	UL-Monroe			

UL-Monroe (SU: 1-1, ATS: 0-2, O/U: 1-1)

Date	Opponent	Line	Score	ATS/O/U
8/28	St. Francis (PA)	-30'	29-0 L	u47'
9/6	at Alabama	+34'	0-73 L	o49
9/13				
9/20	at UTEP			
9/27	Arkansas State			
10/4	at Northwestern			
10/11	at Coastal Carolina			
10/18	Troy			
10/25	at Southern Miss			
11/1	Old Dominion			
11/8				
11/15	South Alabama			
11/22	at Texas State			
11/29	at UL-Lafayette			

UNLV (SU: 3-0, ATS: 2-1, O/U: 1-2)

Date	Opponent	Line	Score	ATS/O/U
8/23	Idaho State	-30'	38-31 L	o68
8/29	at Sam Hou. St	-9	38-21 W	u60
9/6	UCLA	+2'	30-23 W	u54
9/13				
9/20	at Miami (OH)			
9/27				
10/4	at Wyoming			
10/11	Air Force			
10/18	at Boise State			
10/25				
11/1	New Mexico			
11/8	at Colorado State			
11/15	Utah State			
11/21	Hawaii			
11/29	at Nevada			

USC (SU: 2-0, ATS: 2-0, O/U: 2-0)

Date	Opponent	Line	Score	ATS/O/U
8/30	Missouri State	-36'	73-13 W	o60
9/6	Georgia Southern	-29	59-20 W	o62
9/13	at Purdue			
9/20	Michigan State			
9/27	at Illinois			
10/4				
10/11	Michigan			
10/18	at Notre Dame			
10/25				
11/1	at Nebraska			
11/7	Northwestern			
11/15	Iowa			
11/22	at Oregon			
11/29	UCLA			

USF (SU: 2-0, ATS: 2-0, O/U: 2-0)

Date	Opponent	Line	Score	ATS/O/U
8/28	Boise State	+4'	34-7 W	u61
9/6	at Florida	+18	18-16 W	u57'
9/13	at Miami (FL)			
9/20	South Carolina State			
9/27				
10/3	Charlotte			
10/10	at North Texas			
10/18	Florida Atlantic			
10/25	at Memphis			
11/1				
11/6	UTSA			
11/15	at Navy			
11/22	at UAB			
11/29	Rice			

Utah (SU: 2-0, ATS: 2-0, O/U: 2-0)

Date	Opponent	Line	Score	ATS/O/U
8/30	at UCLA	-6'	43-10 W	o48'
9/6	Cal Poly	-42'	63-9 W	o53'
9/13	at Wyoming			
9/20	Texas Tech			
9/27	at West Virginia			
10/4				
10/11	Arizona State			
10/18	at BYU			
10/25	Colorado			
11/1	Cincinnati			
11/8				
11/15	at Baylor			
11/22	Kansas State			
11/28	at Kansas			

Utah Tech (SU: 1-1, ATS: 2-0, O/U: 1-1)

Date	Opponent	Line	Score	ATS/O/U
8/30	UTEP	-5'	28-16 W	u58'
9/6	at Texas A&M	+34'	22-44 W	o57'
9/13	Air Force			
9/20	McNeese State			
9/27	at Vanderbilt			
10/4				
10/11	at Hawaii			
10/17	San Jose State			
10/25	at New Mexico			
11/1				
11/8	Nevada			
11/15	at UNLV			
11/22	at Fresno State			
11/28	Boise State			

UTEP (SU: 1-1, ATS: 1-1, O/U: 1-1)

Date	Opponent	Line	Score	ATS/O/U
8/30	at Utah State	+5'	16-28 L	u58'
9/6	UT-Martin	-7'	42-17 W	o49
9/13	at Texas			
9/20	UL-Monroe			
9/27	Louisiana Tech			
10/4				
10/8	Liberty			
10/15	at Sam Houston State			
10/25				
10/28	at Kennesaw State			
11/8	Jacksonville State			
11/15	at Missouri State			
11/22	New Mexico State			
11/29	at Delaware			

UTSA (SU: 0-2, ATS: 1-1, O/U: 2-0)

Date	Opponent	Line	Score	ATS/O/U
8/30	at Texas A&M	+23'	24-42 W	o58'
9/6	Texas State	-4'	36-43 L	o64
9/13	Incarnate Word			
9/20	at Colorado State			
9/27				
10/4	at Temple			
10/11	Rice			
10/18	at North Texas			
10/25				
10/30	Tulane			
11/6	at USF			
11/15	at Charlotte			
11/22	East Carolina			
11/28	Army			

Vanderbilt (SU: 2-0, ATS: 2-0, O/U: 1-1)

8/30	Charleston Sou.	-38	45-3	W	u50'
9/6	at Virginia Tech	+2	44-20	W	o45
9/13	at South Carolina				
9/20	Georgia State				
9/27	Utah State				
10/4	at Alabama				
10/11					
10/18	LSU				
10/25	Missouri				
11/1	at Texas				
11/8	Auburn				
11/15					
11/22	Kentucky				
11/29	at Tennessee				

BP SPORTS 2025 FOOTBALL PACKAGES

Item:	Regular:	Sale:
2025 CFB Preview (Win Totals, Futures)	\$50	\$40
2025 Newsletter (Includes Writeups)	\$100	\$50
2025 VIP Service (CFB/NFL Best Bets)	\$749	\$499

Should I sign up for the Newsletter or VIP?

	NL	VIP
Bet less than 10 games each week	✓	
\$100 or less per bet	✓	
Can only bet on Gamedays	✓	
One Update Sent Each Week	✓	
Bet more than 10 games each week		✓
\$250 or more per bet		✓
Can bet early in the week		✓
Daily updates via Email/Text		✓

WEEKLY NEWSLETTER

- Emailed every Wednesday during the season
- Write-ups on every CFB/NFL game each week
- ATS Trends • Bad Beats • Misleading Finals
- Major Injuries • CFB Power Ratings on all teams
- ATS Schedule Logs for every CFB/NFL team
- Computer Projected Lines for Every CFB Game
- Will Include Score Projections but will NOT include Best Bets (VIP Only)

2025 CFB PREVIEW

- Emailed in Mid-July
- Team-By-Team 2025 Projections
- Brad Powers' Vegas Power Ratings
- Projected Lines on Every Game
- Season Win Total Projections & Best Bets
- Pointsread Value for Starting QB's
- Heisman, Conference & Title Future Bets
- Game of Year & Week 1 Best Bets

order online at bradpowerssports.com