



West Midlands Ambulance Service Major Trauma Report 2015/16

April-15

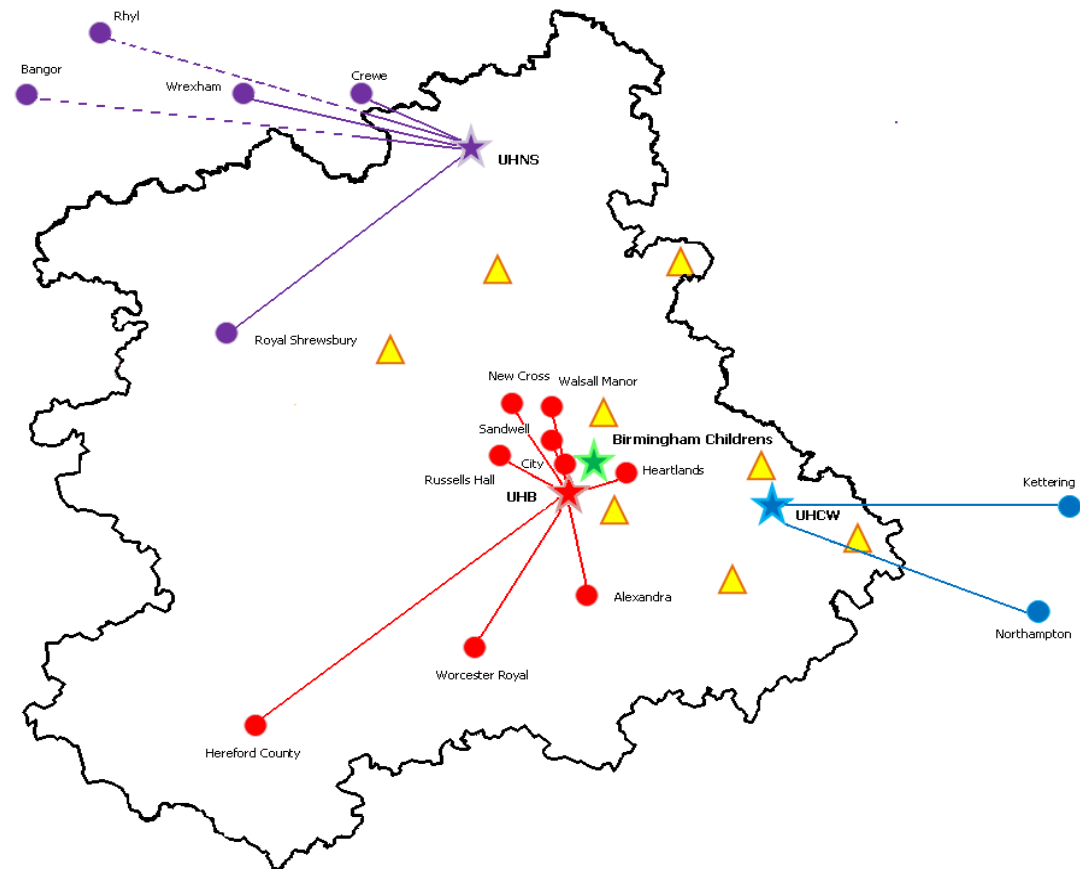
Page

- #1 Index
- #2 Total triage tool activations
- #3 Step 1 analysis
- #4 Step 2 analysis
- #5 Step 3 analysis
- #6 Step 4 analysis
- #7 Triage tool activations summary *
- #8 Daily tool activations
- #9 Activity against contract - weekly and monthly figures *
- #10 Activity against contract - chart *
- #11 Activity trends*
- #12 Conveyance charts *
- #13 Average time distributions by division
- #14 Average conveyance times by destination
- #15 Map - Activity by postcode area *
- #16 Map - Activity by postcode area and shift *
- #17 Map - Incident location by type of incident *
- #18 Map - Incident location by destination *
- #19 Deceased patients *
- #20 Out of area activity *
- #21 Transfers *
- #22-31 MERIT Report

Please note: (please refer to individual page notes where applicable)

1: Information correct on 5th May 2015

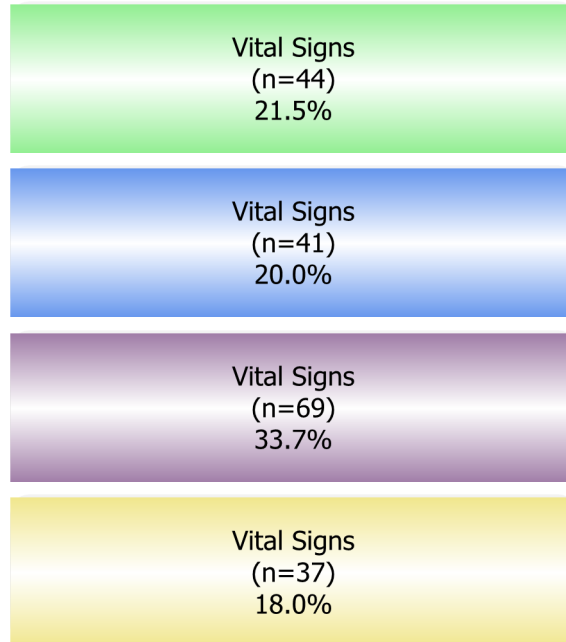
* - Year to date figures are provided for these reports





Deceased patients and cases where crew discretion has triggered the tool will appear in the total figures but not within one of the Steps 1 – 4.

**Total Triage Tool Triggers
(n=205)**



Trauma Injury Type	Count
Falls	67
RTC	93
Other	4
Unknown	4
Stabbing	16
Leisure Activity	4
Assault	1
Burns	8
Industrial Injury	3
Other Transport Collision	4
Shooting	1
Total:	205



**Step 1
Vital Signs
(n=44)**

Respiratory Rate <10 or >29 / min
(n=7)
15.9%

Systolic Blood Pressure <90 mmHg
(n=4)
9.1%

Glasgow Coma Scale <14
(n=33)
75.0%

Trauma Injury Type	Count
Falls	18
RTC	16
Unknown	2
Assault	1
Other	2
Industrial Injury	3
Leisure Activity	1
Shooting	1
Total:	44



Step 2
Anatomy of Injury
(n=41)

Penetrating to Neck/ Chest/ Abdomen (n=14) 34.1%
Suspected Fractured Pelvis (n=12) 29.3%
2 or more Long Bone Fractures (n=7) 17.1%
Crushed/ De-gloved /Mangled Extremity (n=0) 0.0%
Amputation Proximal to Wrist/Ankle (n=0) 0.0%
Open or Depressed Skull Fracture (n=2) 4.9%
Sensory or Motor Deficit (now onset) (n=6) 14.6%

Trauma Injury Type	Count
Unknown	1
RTC	13
Stabbing	14
Leisure Activity	1
Falls	11
Other Transport Collision	1
Total:	41



Step 3
Mechanism of Injury
(n=69)

Fall > 6m / 2 storeys in Adult
(n=7)
10.1%

Fall > 3m / 2x height of Child
(n=9)
13.0%

Vehicle - Ejection (partial or complete)
(n=2)
2.9%

Vehicle - Intrusion >30cm at Patient Site
(n=4)
5.8%

Vehicle - Death in same Compartment
(n=0)
0.0%

Motorcycle Crash > 20 mph
(n=14)
20.3%

Pedestrian / Bicyclist vs Motor Vehicle
thrown/run over/ significant Impact
(n=32) 46.4%

Entrapment
(n=1)
1.4%

Trauma Injury Type	Count
RTC	51
Falls	16
Stabbing	1
Other Transport Collision	1
Total:	69



**Step 4
Special Conditions
(n=37)**

Age > 55 (n=25) 67.6%
Children < 8 years old (n=4) 10.8%
Pregnancy > 20 weeks (n=0) 0.0%
Renal Dialysis Patients (n=0) 0.0%
Bleeding Disorders / Anticoagulants (n=0) 0.0%
Time Critical Extremity Injury (n=1) 2.7%
Burns: Circumferential or 20% (BSA) (n=7) 18.9%
Specialist Trauma Pathway (n=0) 0.0%

Trauma Injury Type	Count
Other	2
RTC	4
Falls	20
Burns	8
Leisure Activity	2
Unknown	1
Total:	37



Deceased patients and cases where crew discretion has triggered the tool will appear in the total figures but not within one of the Steps 1 – 4

Total Triggers	
Step 1: Vital Signs	44
Step 2: Anatomy of Injury	41
Step 3: Mechanism of Injury	69
Step 4: Special Conditions	37
Injuries Incompatible With Life – Deceased	14
Total	205

Trauma Type	
RTC	93
Falls	67
Stabbing	16
Burns	8
Other	4
Unknown	4
Leisure Activity	4
Other Transport Collision	4
Industrial Injury	3
Assault	1
Shooting	1
Total	205

Step 1 Breakdown	
Glasgow Coma Scale <14	33
Respiratory Rate <10 or >29 / min	7
Systolic Blood Pressure <90 mmHg	4
Total	44

Step 2 Breakdown	
Penetrating to Neck/ Chest/ Abdomen	14
Suspected Fractured Pelvis	12
2 or more Long Bone Fractures	7
Sensory or Motor Deficit (now onset)	6
Open or Depressed Skull Fracture	2
Total	41

Step 3 Breakdown	
Pedestrian / Bicyclist vs Motor Vehicle thrown/run over/ significant Impact	32
Motorcycle Crash > 20 mph	14
Fall > 3m / 2x height of Child	9
Fall > 6m / 2 storeys in Adult	7
Vehicle - Intrusion >30cm at Patient Site	4
Vehicle - Ejection (partial or complete)	2
Entrapment	1
Total	69

Step 4 Breakdown	
Age > 55	25
Burns: Circumferential or 20% (BSA)	7
Children < 8 years old	4
Time Critical Extremity Injury	1
Total	37

Step 1 - Trauma Type	
Falls	18
RTC	16
Industrial Injury	3
Unknown	2
Other	2
Assault	1
Leisure Activity	1
Shooting	1
Total	44

Step 2 - Trauma Type	
Stabbing	14
RTC	13
Falls	11
Unknown	1
Leisure Activity	1
Other Transport Collision	1
Total	41

Step 3 - Trauma Type	
RTC	51
Falls	16
Stabbing	1
Other Transport Collision	1
Total	69

Step 4 - Trauma Type	
Falls	20
Burns	8
RTC	4
Other	2
Leisure Activity	2
Unknown	1
Total	37

This data does not include cases where the crews are not contacting the Regional Trauma Desk, any trauma transfers or cases which are responded to by out of area resources.



Date	No. of Tool Activations	Non-Conveyances	Cases That By Passed Their Nearest Hospital	No. of Patients Seen by Specialist Resources				Patient Initially Transported To:					Major Trauma Centre			
				Air Amb	Day Air Amb / ECT / MERIT	Night Air Amb / ECT / MERIT	Voluntary BASICS / MARS etc	MTC	Trauma Unit	LEH	Out of Area	Not Transported	UHB	BCH	RSUH	UHCW
01/04/2015	5	2	3		3		1	3				2	1	1		1
02/04/2015	9	1	4			1	1	6	2			1	2	2	2	
03/04/2015	7	0	2			2		2	4	1			2			
04/04/2015	7	0	3			3	1	4	2	1			4			
05/04/2015	2	0	0				1	2					1		1	
06/04/2015	6	1	2		1		1	3	2			1	2		1	
07/04/2015	6	1	3				1	3	2			1	1	1	1	
08/04/2015	3	0	1					1	2					1		
09/04/2015	7	0	3					6	1				4			2
10/04/2015	10	0	4			3		5	5				5			
11/04/2015	6	0	3		3			3	3				3			
12/04/2015	7	0	3	2			1	5	2				1		2	2
13/04/2015	9	1	3			1	1	6	2			1	4	2		
14/04/2015	7	2	5	3	1	1		5				2	1	1	3	
15/04/2015	2	0	1						2							
16/04/2015	8	0	2	1	1		1	4	4				1		2	1
17/04/2015	7	0	5	1				5	2				2		2	1
18/04/2015	8	0	4	1	1			5	3				2		2	1
19/04/2015	8	0	3		1	1		4	4				3	1		
20/04/2015	5	0	4	1	1			4	1				1	3		
21/04/2015	10	1	4	2	1	1		8	1			1	5		1	2
22/04/2015	1	0	1	1				1					1			
23/04/2015	4	0	3			1		3	1				1	2		
24/04/2015	8	1	5		1	1		6	1			1	4	1		1
25/04/2015	14	0	9			4	3	9	3	1	1		8	1		
26/04/2015	11	1	5	1	2	1	1	5	5			1	4			1
27/04/2015	9	1	6	3	2	2	1	8				1	5	1	2	
28/04/2015	7	1	2		1	2		4	2			1	2	1	1	
29/04/2015	6	1	4	1	2	1		4	1			1		3		1
30/04/2015	6	1	3		1	1		5				1	2	2		1
Total	205	15	100	17	22	26	14	129	57	3	1	15	72	23	20	14

This data does not include cases where the crews are not contacting the Regional Trauma Desk, any trauma transfers or cases which are responded to by out of area resources. **Report Ref: 184**

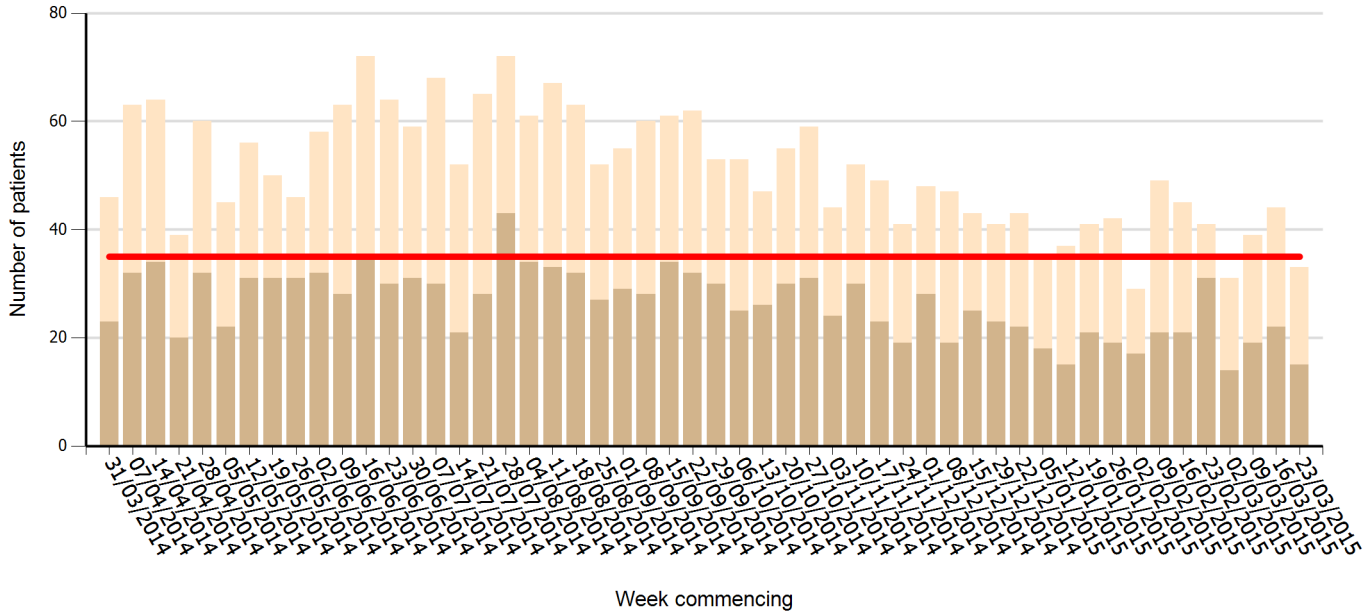


A	B	C	D	E
Week Commencing	No. of triage tool +ve patients	Non-Conveyances	Total no. of cases within Column B that were that MTCs natural DGH catchment (therefore not new activity shifts)	Additional triage tool +ve patients that transferred within their major trauma catchment population (i.e. that bypassed their nearest hospitals)
06/04/2015	45	2	24	19
13/04/2015	49	3	23	23
20/04/2015	53	3	19	31
30/03/2015	30	3	15	12
Overall Total	177	11	81	85

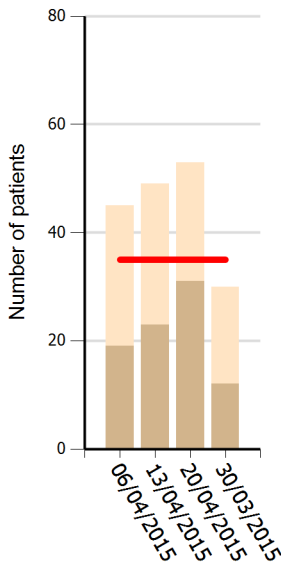
A	B	C	D	E
Month	No. of triage tool +ve patients	Non-Conveyances	Total no. of cases within Column B that were that MTCs natural DGH catchment (therefore not new activity shifts)	Additional triage tool +ve patients that transferred within their major trauma catchment population (i.e. that bypassed their nearest hospitals)
April	177	11	81	85
Overall Total	177	11	81	85



Weekly Activity against Contract: 2014/15



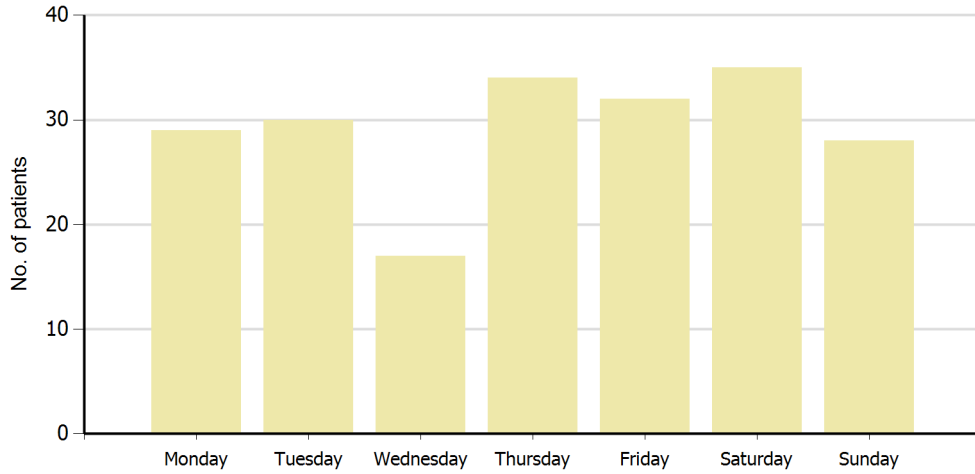
Weekly Activity against Contract: 2015/16



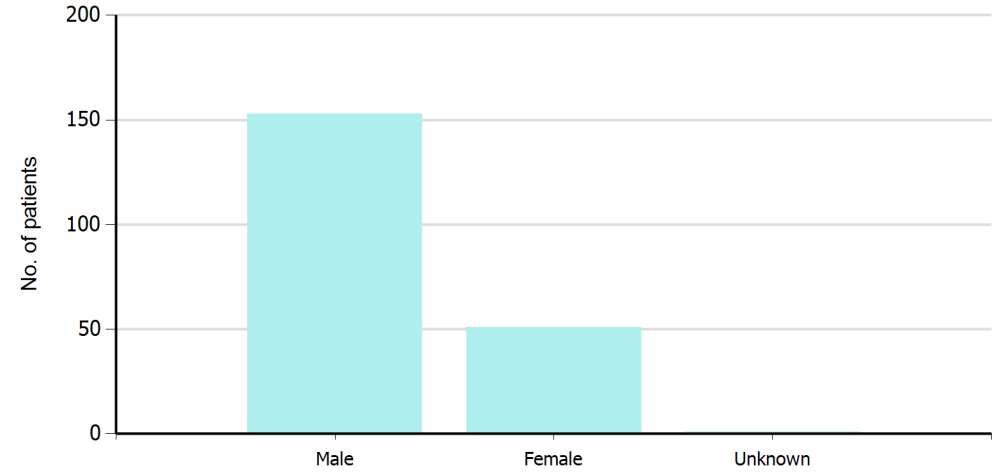
- █ Weekly Contract (relates to 5 cases per day where the triage tool is triggered and the ambulance is required to bypass a hospital in order to reach the...)
- █ Total Activity: Total number of triage triggers
- █ Contract Activity: Triage tool triggers where we had to bypass the hospital in order to reach the Major Trauma Centre



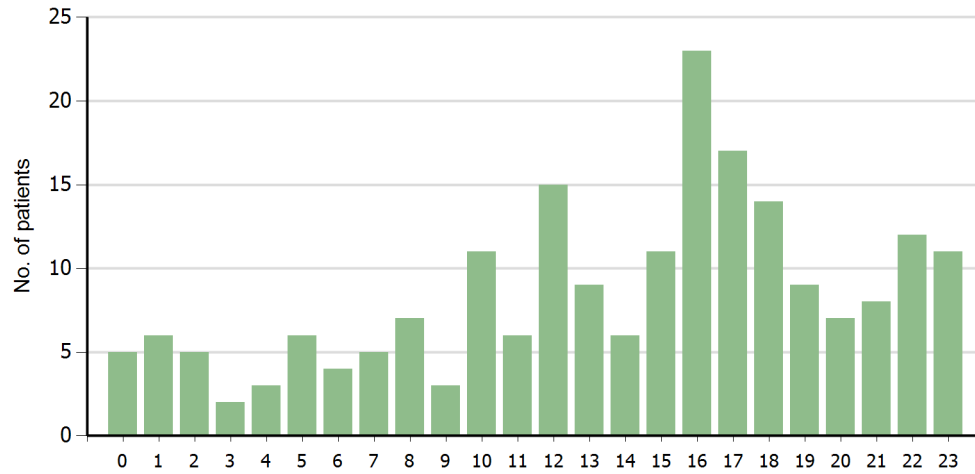
Activity (total) by Day of Week



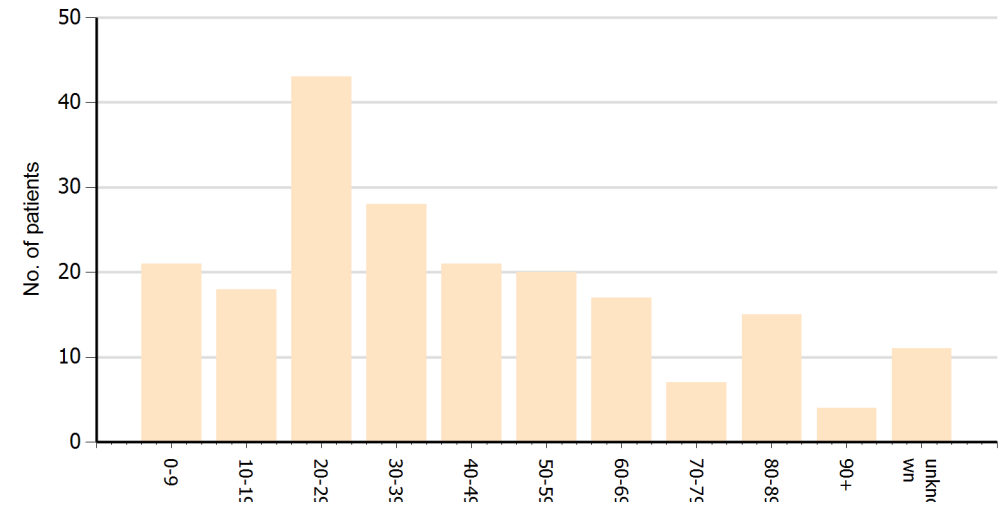
Activity (total) by Patient's Gender



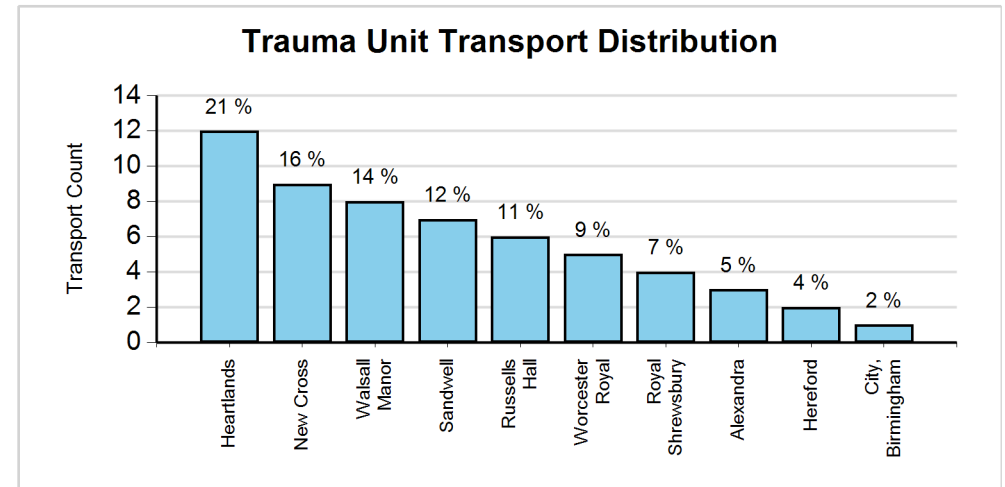
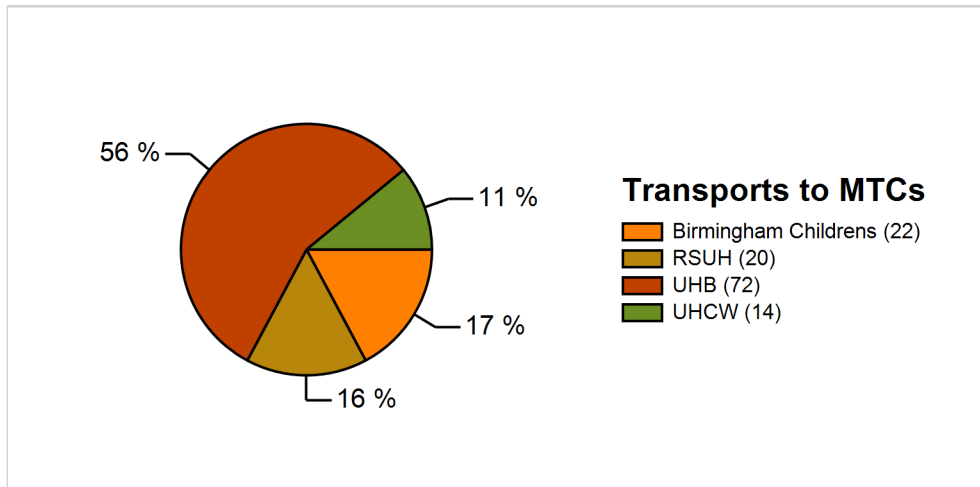
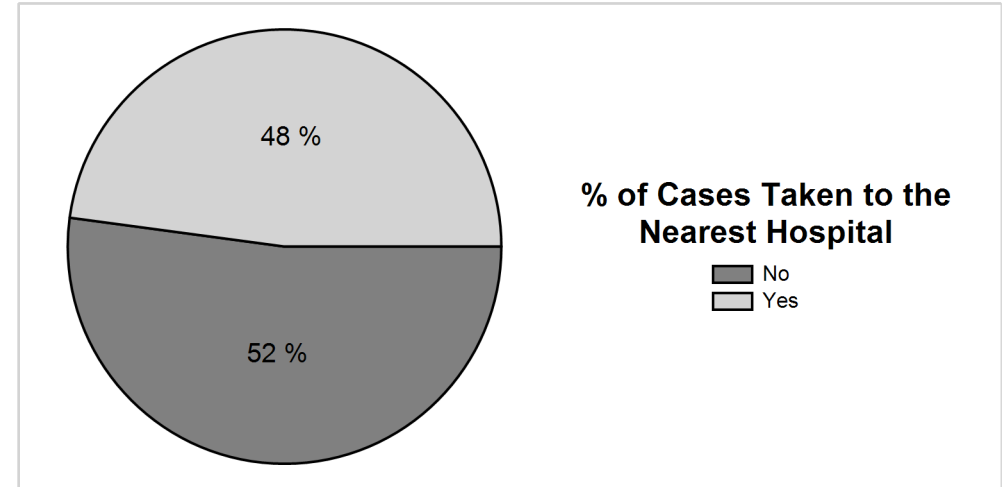
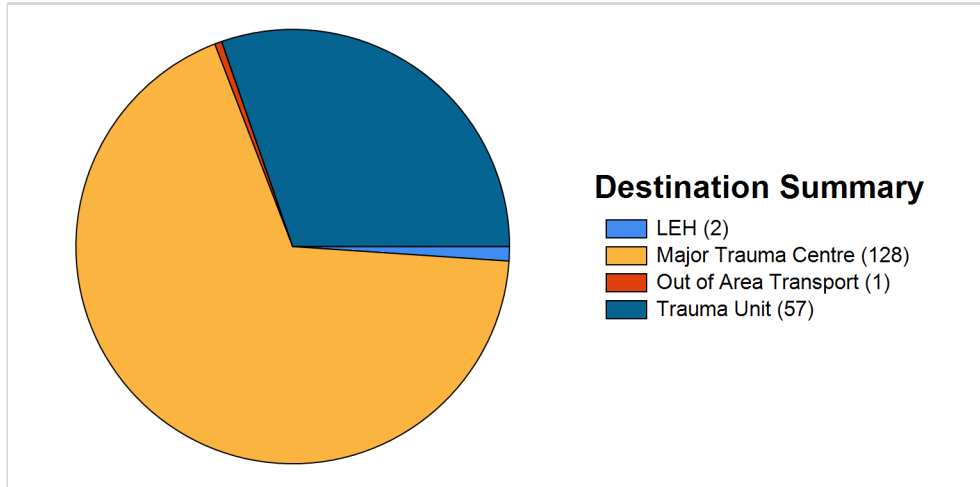
Activity (total) by Hour of Day



Activity (total) by Patient Age



This data does not include cases where the crews are not contacting the Regional Trauma Desk, any trauma transfers or cases which are responded to by out of area resources.



This data does not include cases where the crews are not contacting the Regional Trauma Desk, any trauma transfers or cases which are responded to by out of area resources.



Average Time Mobile to At Scene (hh:mm:ss)

Incident based. First mobile time to first on scene

LAND Crews only			AIR Crews only		
Division	Day	Night	Division	day	night
Birmingham Division	0:04:41	0:04:56	Birmingham Division	0:13:02	
Black Country Division	0:04:36	0:04:05	Black Country Division	0:11:20	
C&W Division	0:04:02	0:05:12	C&W Division	0:06:42	0:16:00
Staffordshire Division	0:06:03	0:05:07	Staffordshire Division	0:08:57	
West Mercia Division	0:06:47	0:04:40	West Mercia Division	0:12:28	
Total	0:05:14	0:04:40	Total	0:10:27	0:16:00

Average Time Spent on Scene (hh:mm:ss)

Incident based. First on scene to first left scene (where subsequently conveyed)
Ambulances and Air Crews only. Entrapments and RSI on scene excluded (where known).

ALL Crews		
Division	day	night
Birmingham Division	0:37:31	0:35:36
Black Country Division	0:46:05	0:41:10
C&W Division	0:37:28	0:44:33
Staffordshire Division	0:51:18	0:40:22
West Mercia Division	0:48:32	0:33:18
Total	0:43:47	0:39:00

Average Travel Time to Hospital (hh:mm:ss)

Response based. Time left scene to time at hospital

LAND Crews only			AIR Crews only	
Division	day	night	Division	day
Birmingham Division	0:14:41	0:10:32	Birmingham Division	0:10:39
Black Country Division	0:18:52	0:14:52	Black Country Division	0:04:43
C&W Division	0:25:54	0:20:17	C&W Division	0:08:17
Staffordshire Division	0:26:15	0:15:06	Staffordshire Division	0:10:15
West Mercia Division	0:23:23	0:33:01	West Mercia Division	0:12:57
Total	0:19:42	0:15:36	Total	0:10:37

Average Total Time spent on Cases (hh:mm:ss)

Incident based. First allocated time to latest time clear

ALL Crews		
Division	day	night
Birmingham Division	1:39:18	1:31:55
Black Country Division	1:43:08	1:31:02
C&W Division	1:39:52	1:56:14
Staffordshire Division	1:58:10	1:36:47
West Mercia Division	1:54:40	1:54:03
Total	1:46:16	1:36:44

This data does not include cases where the crews are not contacting the Regional Trauma Desk, any trauma transfers or cases which are responded to by out of area resources. The 'division' is based on the location of incident. Excluding defib responses



Average Travel Time to Hospital (hh:mm:ss)

Response based. Time left scene to time at hospital

LAND Crews only	MTCs	
Hospital Attended	day	night
Birmingham Childrens	0:25:57	0:23:02
UHB	0:17:34	0:14:08
UHCW	0:22:00	0:17:04
Total	0:20:45	0:15:14

AIR Crews only	MTCs
Hospital Attended	day
Birmingham Childrens	0:07:59
UHB	0:09:54
UHCW	0:09:04
Total	0:09:25

LAND Crews only	Other Destinations	
Hospital Attended	day	night
Alexandra	0:22:18	0:22:49
City (Birmingham)	0:16:32	
County Hospital (Stafford)	0:54:26	
George Elliot		0:24:37
Heartlands	0:12:14	0:11:30
Hereford County	0:28:20	0:25:21
New Cross	0:11:52	0:08:55
Princess Royal	0:29:03	0:46:46
Royal Shrewsbury	0:12:09	
Royal Stoke Univ Hosp	0:20:01	0:18:12
Russells Hall	0:18:53	0:09:24
Sandwell	0:11:29	0:05:14
Unspecified Location	0:57:18	
Walsall Manor	0:17:17	0:13:47
Warwick		0:11:03
Worcestershire Royal	0:24:50	0:26:03
Total	0:18:20	0:15:58

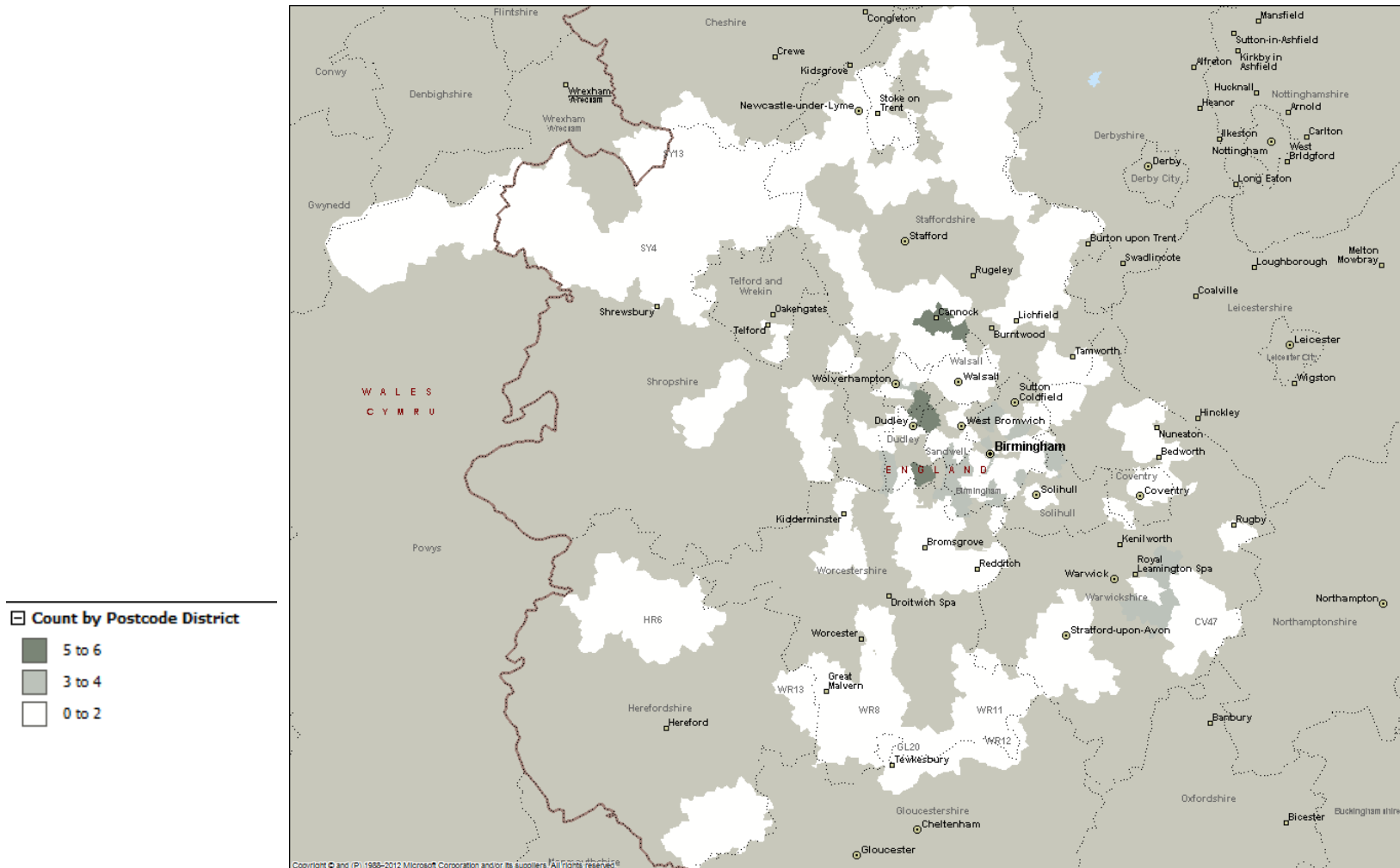
AIR Crews only	Other Destinations
Hospital Attended	day
Royal Stoke Univ Hosp	0:13:13
Total	0:13:13

This data does not include cases where the crews are not contacting the Regional Trauma Desk, any trauma transfers or cases which are responded to by out of area resources. Excluding defib responses



Major Trauma Activity by Postcode Area

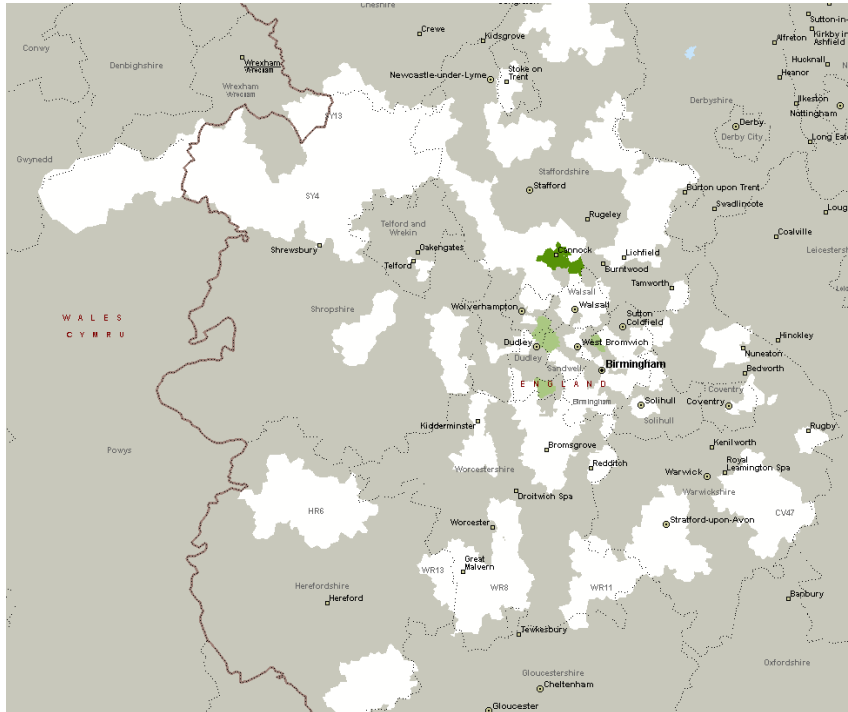
April 2015



Major Trauma Activity by Postcode Area and Shift

April 2015

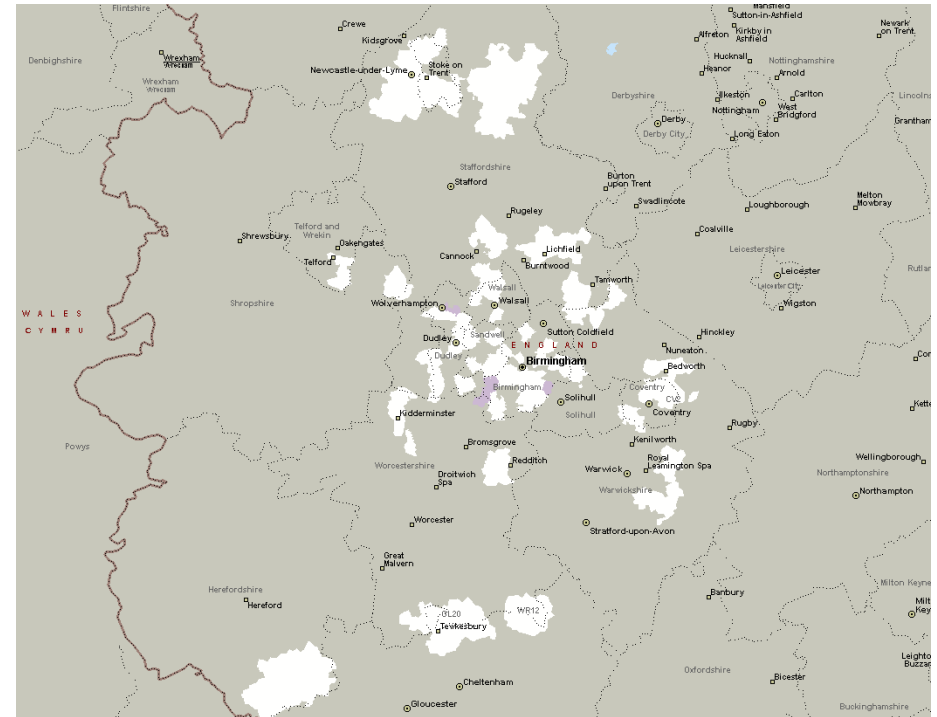
DAY Shift (07:00 – 18:59)



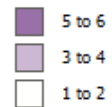
Count by Postcode District



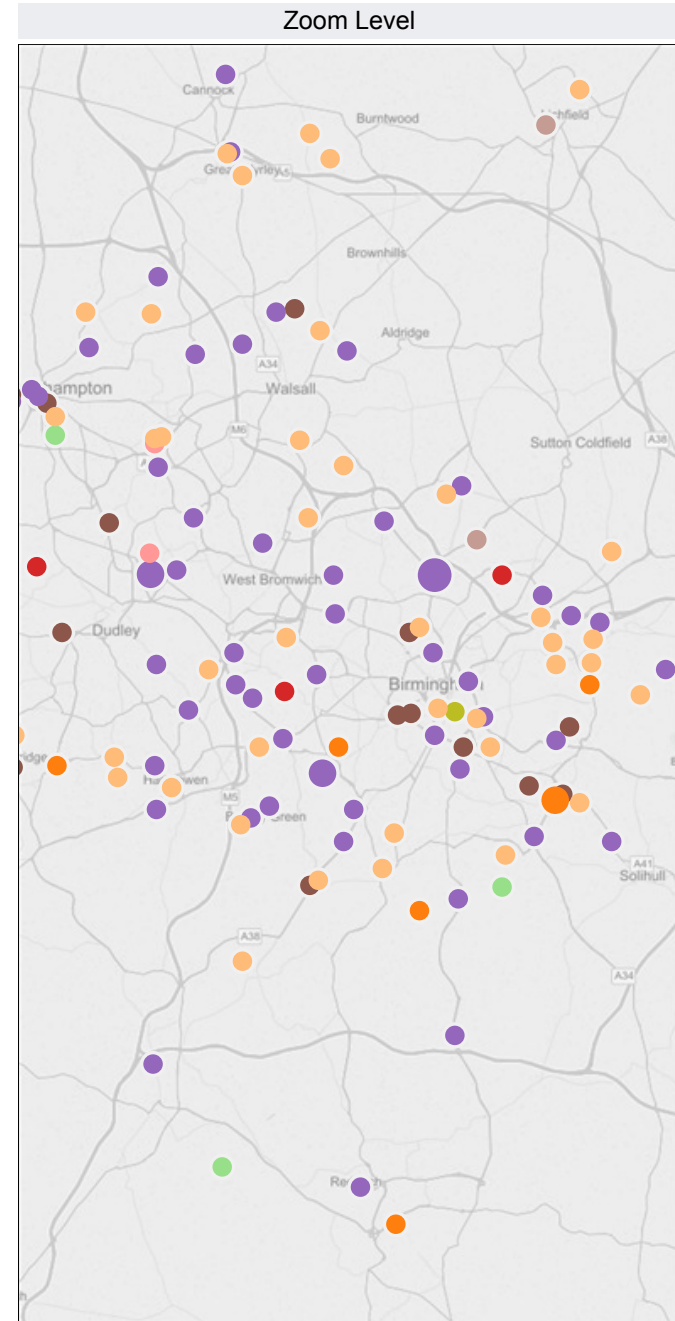
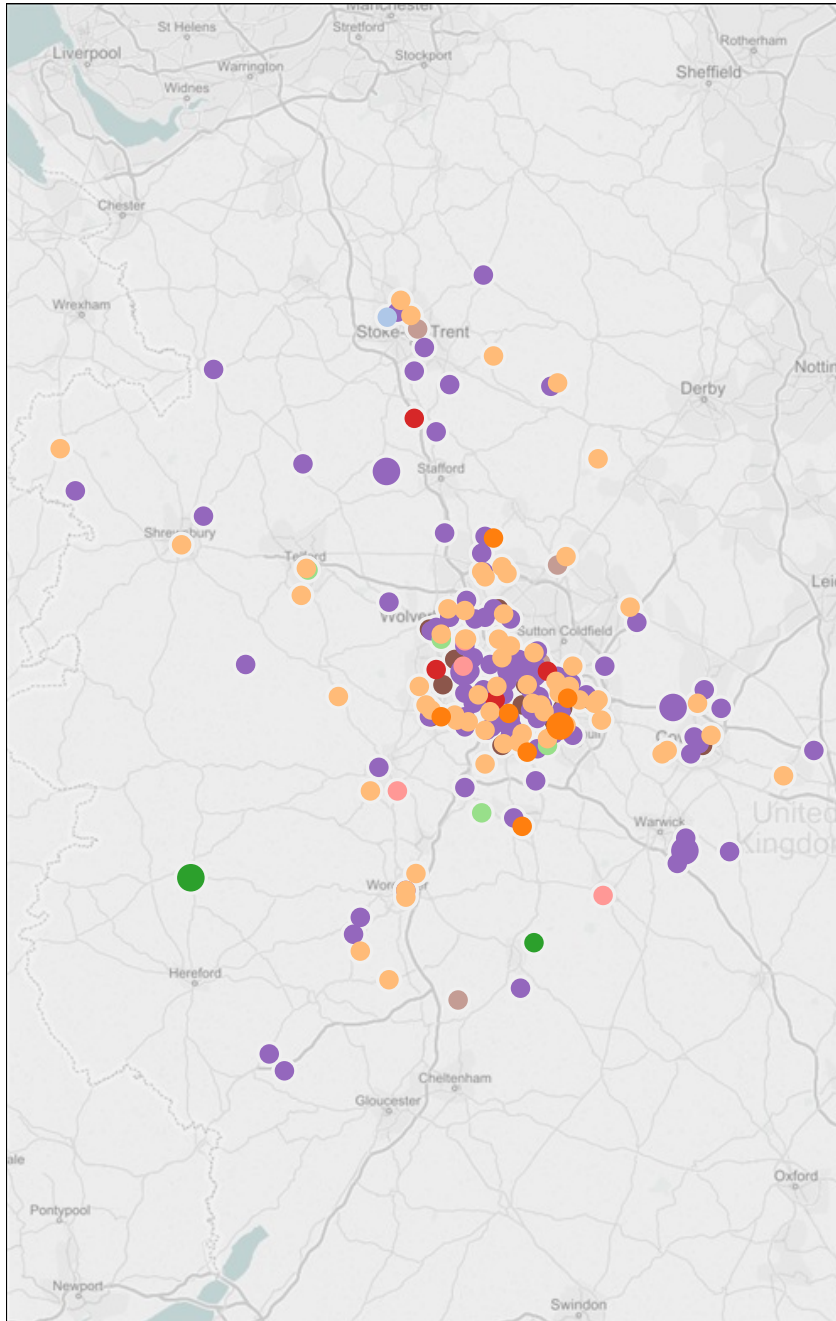
NIGHT Shift (19:00 – 06:59)



Count by Postcode District

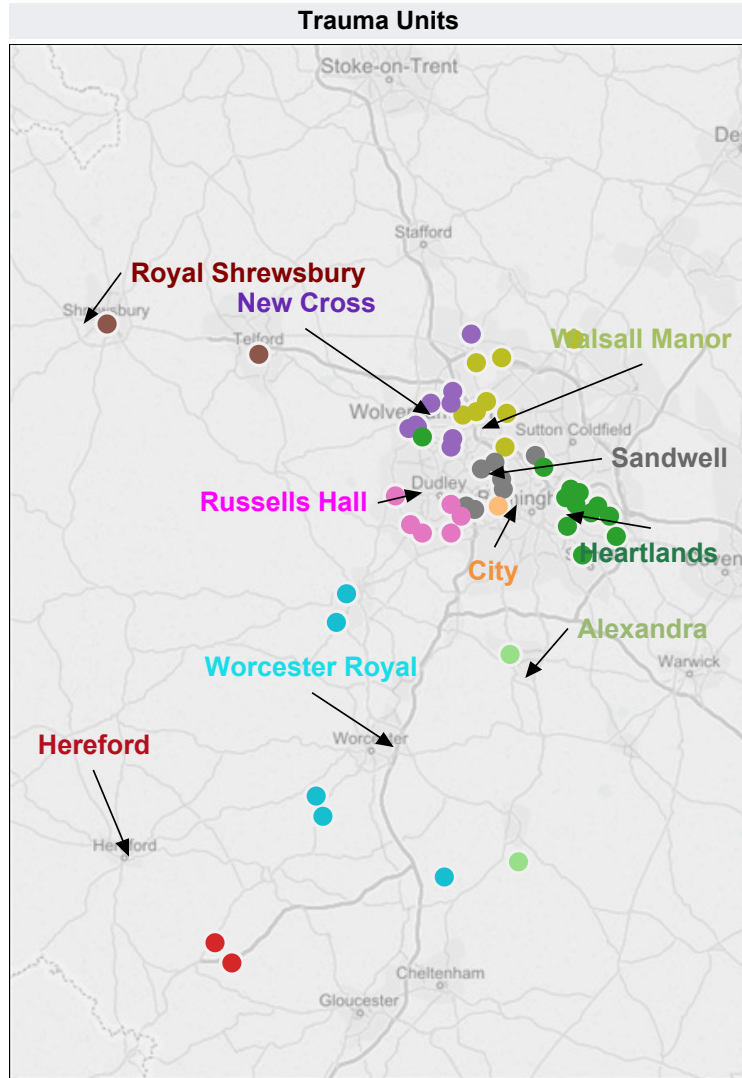
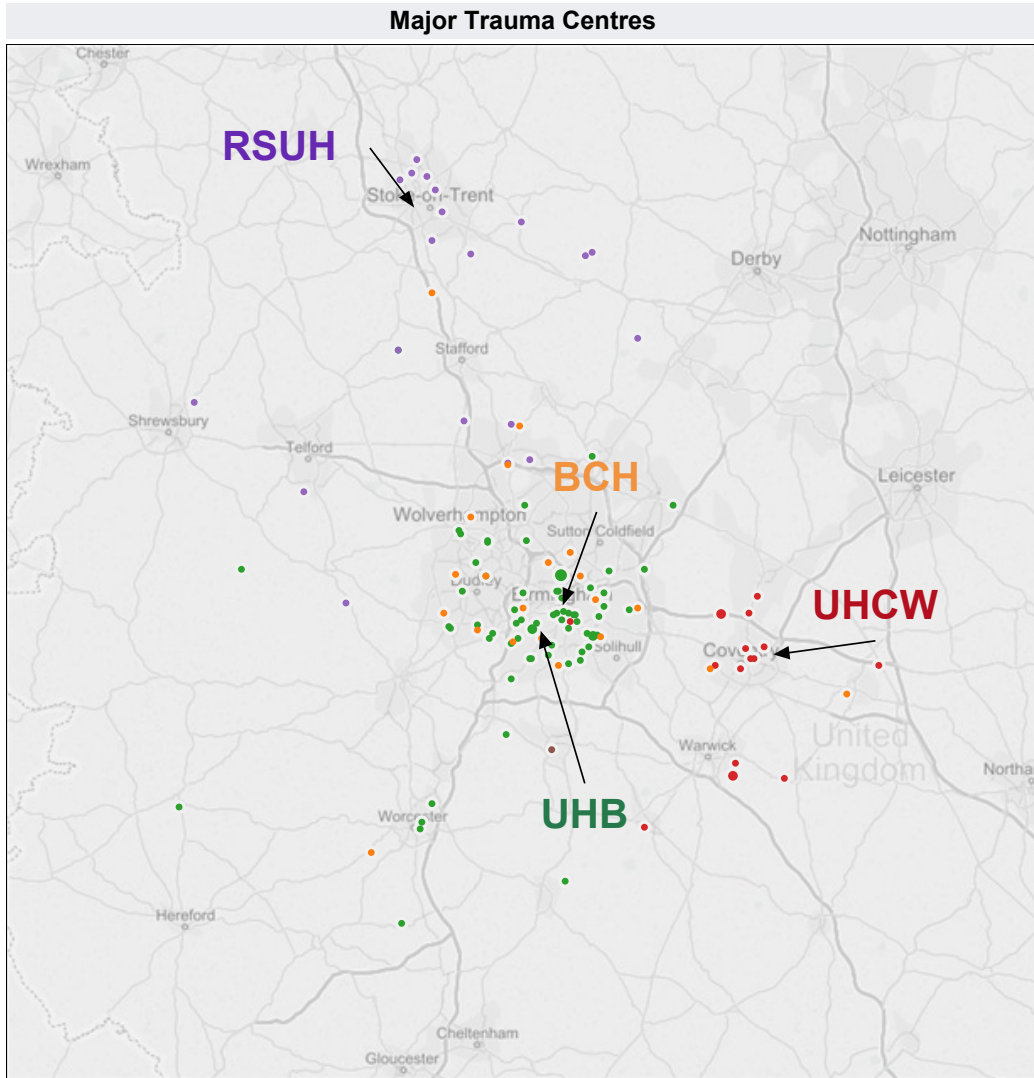


Incident Location of Major Trauma Patients by Type of Incident 2015/16



This data does not include cases where the crews are not contacting the Regional Trauma Desk, any trauma transfers or cases which are responded to by out of area resources.

Incident Location of Patients Conveyed to MTCs and TUs 2015/16



Number of Records
 ● 1 ● 3

Number of Records
 ● 1

Major Trauma Centre

- Birmingham Childrens
- Not MTC
- RSUH
- UHB
- UHCW

Trauma Unit

- Alexandra
- New Cross
- Walsall Manor
- City, Birmingham
- Royal Shrewsbury
- Worcester Royal
- Heartlands
- Russells Hall
- Hereford
- Sandwell

This data does not include cases where the crews are not contacting the Regional Trauma Desk, any trauma transfers or cases which are responded to by out of area resources.



	April	May	June	July	August	September	October	November	December	January	February	March	No Value	YTD
No. of deceased patients	16													16

Trauma Injury Type	General Area	Deceased Notes
RTC	Whitchurch	RTC, fm i 60s. Witnesses state pts vehicle swerved across central reservation why and had head on collision with another car. Significant deformity to front end. Pt steering wheel bent +++. PT unresponsive with bystanders, dragged out of car and CPR commenced. ASO/RRV/DMA i/a. Pt PEA arrest, Intubated and IO access; ALS. O/A HMed; Still PEA, Pt given IV in
Other Transport Collision	TIPTON	HIT BY TRAIN
Other Transport Collision	SUMMERFIELD	HIT BY TRAIN
Falls	Telford	
RTC	Tamworth	CAR v HGV. 1 x female fatale in the car. 2nd patient minor injury
Falls		male 28 fallen 30ft from tree believed to be intoxicated, obvious spinal shock, leading to respiratory arrest
RTC	Stone	M/60 come off moped immediately into cardiac arrest. Resuscitation efforts ceased as pt has a traumatic head injury incompatible with life. HMed03 responded but stood down over head
RTC	Stoke	
RTC	Wythall	Car left the road and was down an embankment. Pt was inaccessible by road crews and in cardiac arrest from traumatic injuries. Pt had possibly been there all night. Pt extricated once fire were in attendance and was in asystole with ?rigor mortis. RIP
RTC	A41, Albrighton	
Stabbing	Wolverhampton	Multiple stab wounds, PH Thoracotomy carried out, ROLE
RTC	Bedworth	Pt jogging down the road and was hit by a car. Massive frontal damage to the car with bullseye and damage to the A post. Head injury incompatible with life. ROLE on scene.
RTC	Dudley Port	
RTC	Leek	Ped vs HGV.
RTC	BIRMINGHAM CITY	Several notes of traumatic cardiac arrest motorbike vs car , helmet removed on impact. Significant head injuries deemed incompatible with life by hmed03
RTC	Bournville	

Total 16



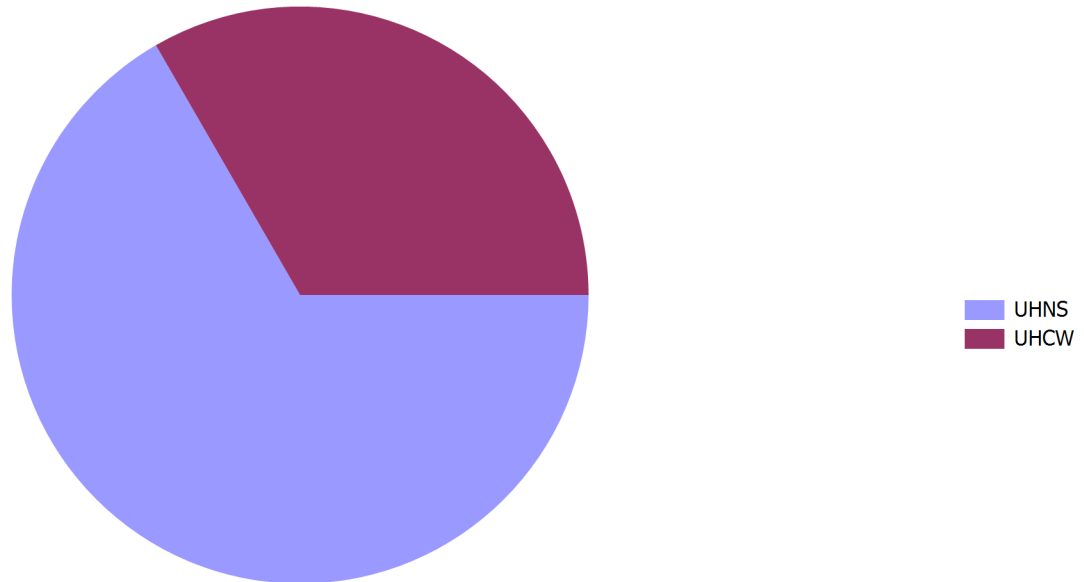
	April	May	June	July	August	September	October	November	December	January	February	March	YTD
No. of Out of Area Cases	3												3

Case Origin	
Other / Unknown	1
NWAS	1
South Central	1
Total	3

Tool Triggered By	
Step 1: Vital Signs	1
Step 2: Anatomy of Injury	2
Total	3

Trauma Injury Type	
Falls	1
RTC	2
Total	3

Patient Destination

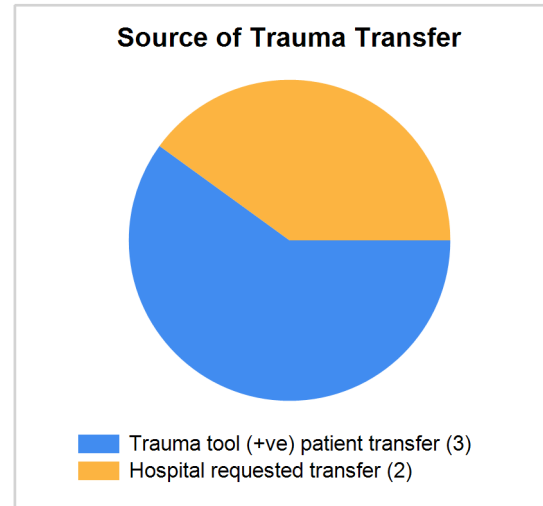




Data includes out of area transfers

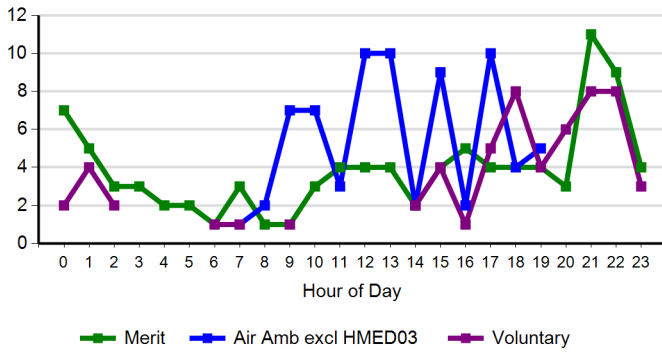
	April	May	June	July	August	September	October	November	December	January	February	March	YTD
No. of Transfers	5												5

Transfer From	Transfer To				Total
	Birmingham Childrens	Not MTC	UHB	UHCW	
City, Birmingham	1	0	0	0	1
LEH	0	0	0	1	1
Russells Hall	0	0	1	0	1
UHB	0	1	0	0	1
Walsall Manor	1	0	0	0	1
Total	2	1	1	1	5

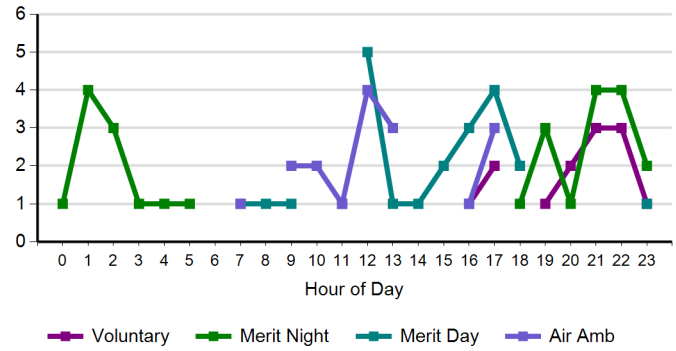




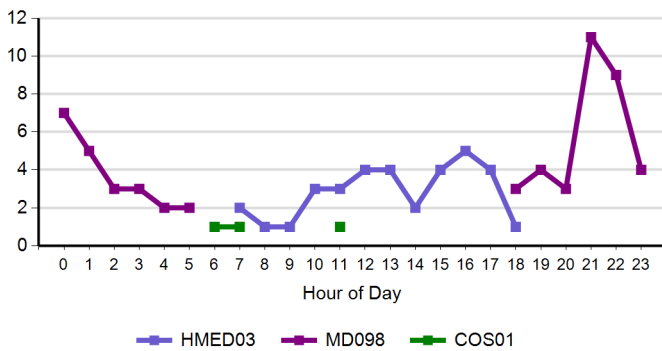
All Cases Attended - By Group



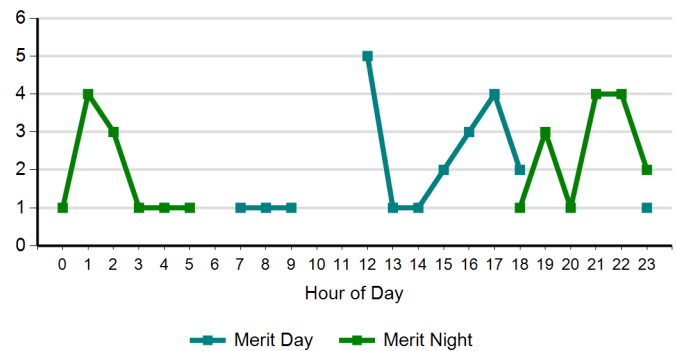
Trauma Cases Attended - By Group



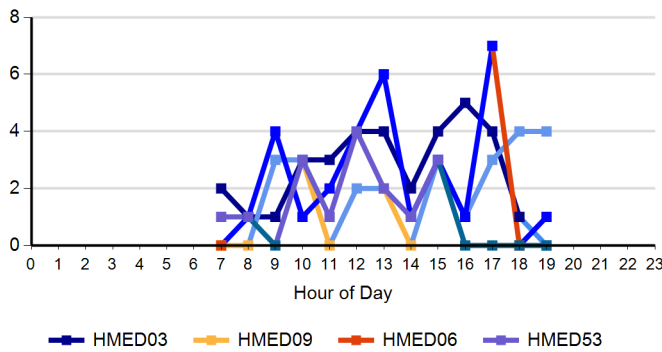
All Cases Attended by MERIT



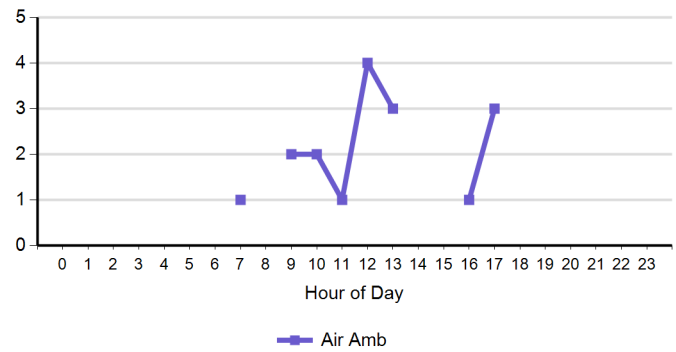
Trauma Cases Attended by MERIT



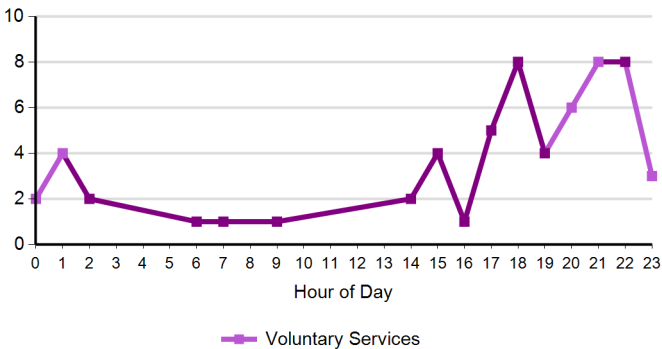
All Cases Attended by Air Ambulance



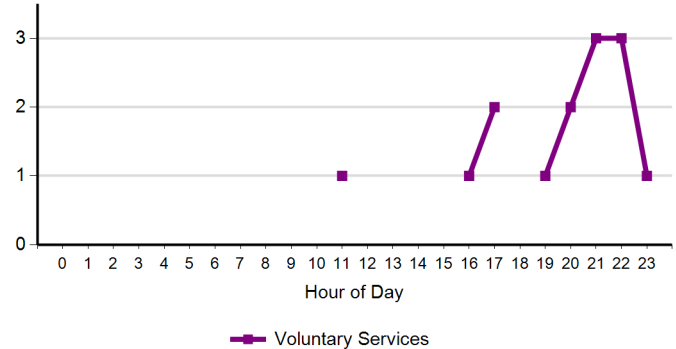
Trauma Cases Attended by Air Ambulance



All Cases Attended by Voluntary Services



Trauma Cases Attended by Voluntary Services



* Please note the scales on the charts above are not the same



Responses at scene by Chief Complaint (All Cases)

	Total	Air Amb excl HMED03	Merit	Voluntary
Falls	35	19	11	5
Unconscious	26	7	12	7
RTC	25	7	13	5
RTC Entrapment/Ejection Rollover	20	6	8	6
Trauma	18	9	8	1
Cardiac Arrest	15	4	6	5
Stabbing	15		10	5
Life Threatening Situation	12	1	5	6
Chest Pain	10	5	5	
RTC Multiple Patients	7	1	1	5
Convulsions	6		3	3
Assaults	5		3	2
Red 2	5	4	1	
Psychiatric or Suicide	3		2	1
Burn	3		2	1
Passing Call	3	1	1	1
Green 2	3	3		
Generally III	2	1		1
Head Pain	1		1	
Traumatic Inj	1	1		
Breathing Problems	1	1		
Chokings	1			1
Fall	1	1		
Running Call	1			1
Stroke	1	1		
Animal	1			1
Pregnancy	1		1	
Sick	1			1
Generally III Call From Agency	1			1
Unknown Problem	1			1
Total	225	72	93	60

Responses at scene by Injury Type (Trauma Cases)

	Total	Air Amb	Merit Day	Merit Night	Voluntary
RTC	37	9	13	7	8
Falls	17	5	4	7	1
Stabbing	7	1		6	
Burns	5			3	2
Industrial Injury	4	1	3		
Unknown	3		1	1	1
Other Transport Collision	3	1		2	
Other	2		1		1
Assault	1				1
Leisure Activity					
Shooting					
Total	79	17	22	26	14



Transports by Destination (All Cases)

	Total	Air Amb excl HMED03	Merit	Voluntary
Royal Stoke Univ Hosp	21	9	9	3
Uni Hospital Cov & War	15	14		1
New Queen Elizabeth Hosp	14	4	10	
Birmingham Childrens	6	4	2	
Worcestershire Royal	4	2	2	
Hereford County	3	3		
Royal Shrewsbury	3	1	2	
Alexandra	3	3		
Sandwell	2		2	
City (Birmingham)	2			2
Heartlands	2		1	1
Walsall Manor	2		1	1
Gloucester Dialysis Unit	1	1		
Robert Jones	1	1		
County Hospital (Stafford)	1			1
New Cross	1		1	
ROYAL DERBY HOSPITAL	1	1		
Russells Hall	1		1	
Unspecified Hospital	1	1		
Total	84	44	31	9

Transports by Destination (Trauma Cases)

	Total	Air Amb	Merit	Voluntary
Birmingham Childrens	3	1	2	
UHB	11	4	7	
Royal Stoke Univ Hosp	9	3	5	1
Russells Hall	1		1	
UHCW	3	3		
Walsall Manor	1		1	
Worcestershire Royal	1		1	
Total	29	11	17	1

Average time on scene per response (All Cases)

	Total	Air Amb excl HMED03	Merit	Voluntary
Average	0:32:21	0:30:13	0:33:13	0:33:32

Average time on scene per response * (Trauma Cases)

	Total	Air Amb	Merit	Voluntary
Average	0:41:57	0:40:20	0:38:44	1:14:08

* For Trauma cases where the callsigns are in the specified list
Merit = COS01, HMED03, MD098
Air Amb = HMED06, HMED09, HMED53
Voluntary = MD callsigns excluding MD098 and MD099
Entrapments and RSI on scene are excluded (where known).

Average time on scene per response * (Trauma Cases where RSI was undertaken)

	Total	Merit	Voluntary
Average	0:56:19	0:58:29	0:52:40

* For Trauma cases where the callsigns are in the specified list
Merit = COS01, HMED03, MD098
Air Amb = HMED06, HMED09, HMED53
Voluntary = MD callsigns excluding MD098 and MD099
Entrapments are excluded (where known).



Incident Job Cycle Time for Transfers to MTC undertaken by MERIT (All Cases)

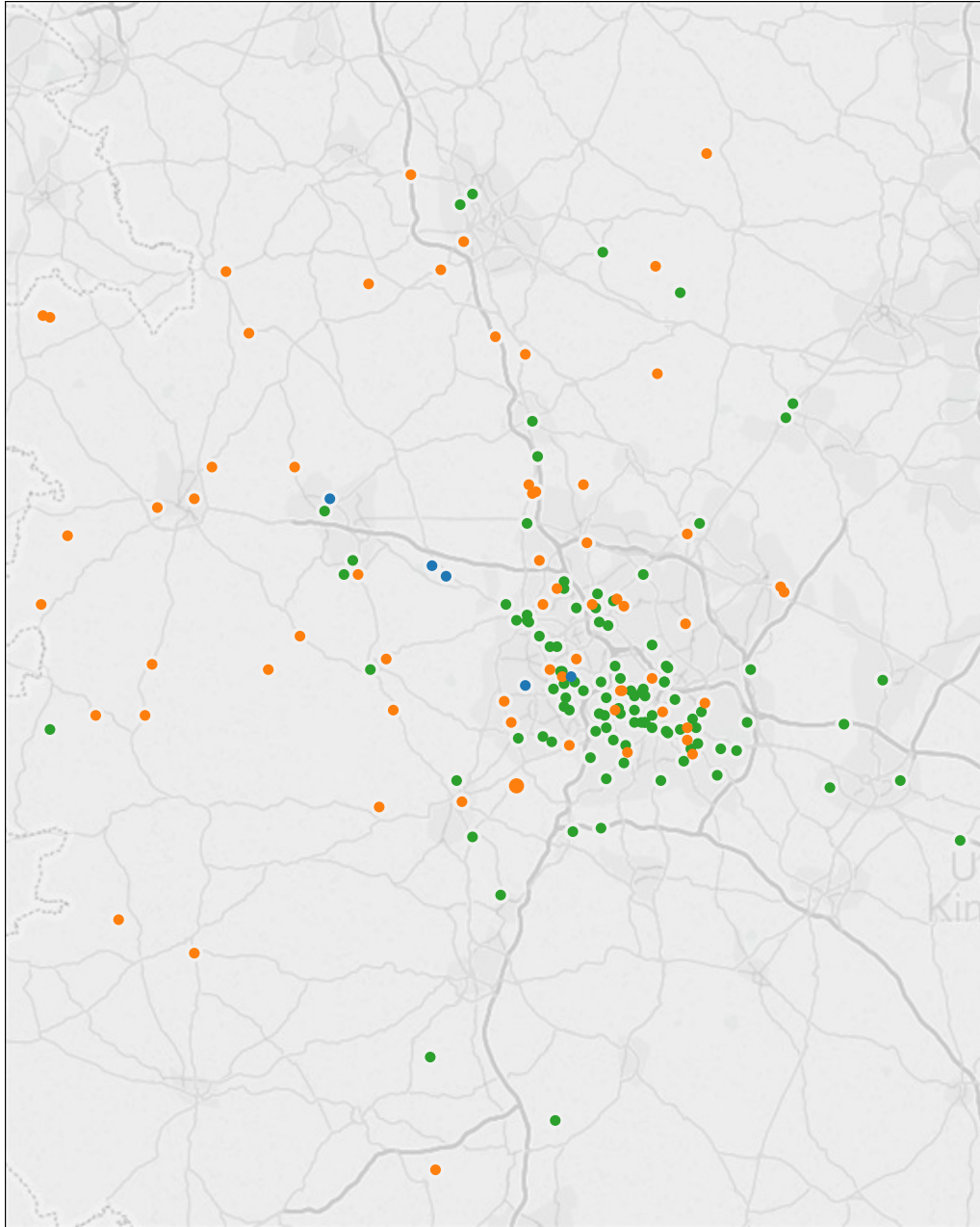
Case Nr	Date	Call Sign	Transfer From	Transfer To (MTC)	Time Call Connected	Max Clear	Job Cycle
0 Cases			Average Incident Job Cycle (Call Connect to maximum clear time)				0:00:00

Data shows transfers from a WMAS hospital (TU / LEH) to an MTC undertaken by MERIT (call signs HMED03, COS01 or MD098).

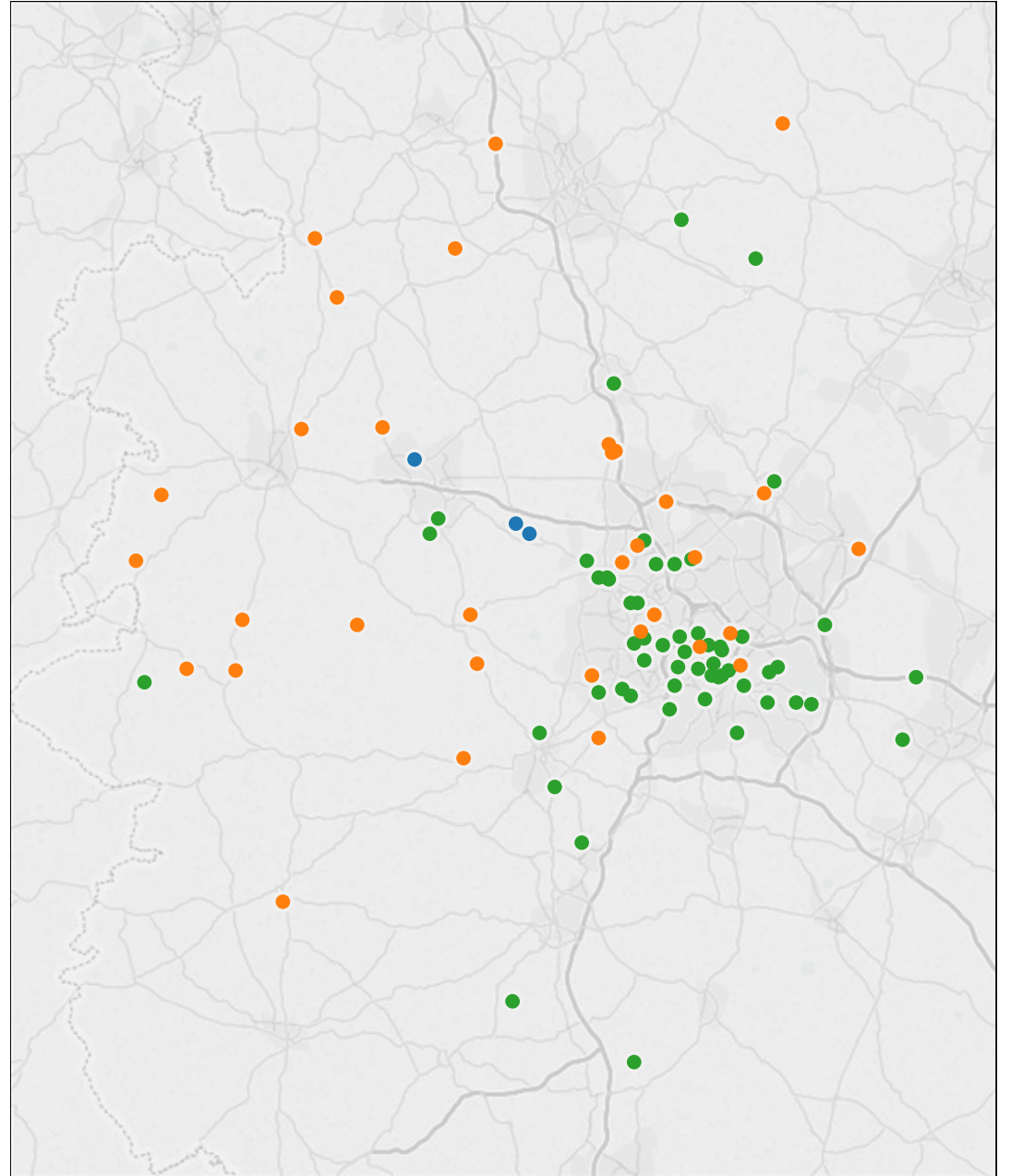
MERIT Activity (All cases from CAD)

2015/16

Allocated Incidents



Attended Incidents

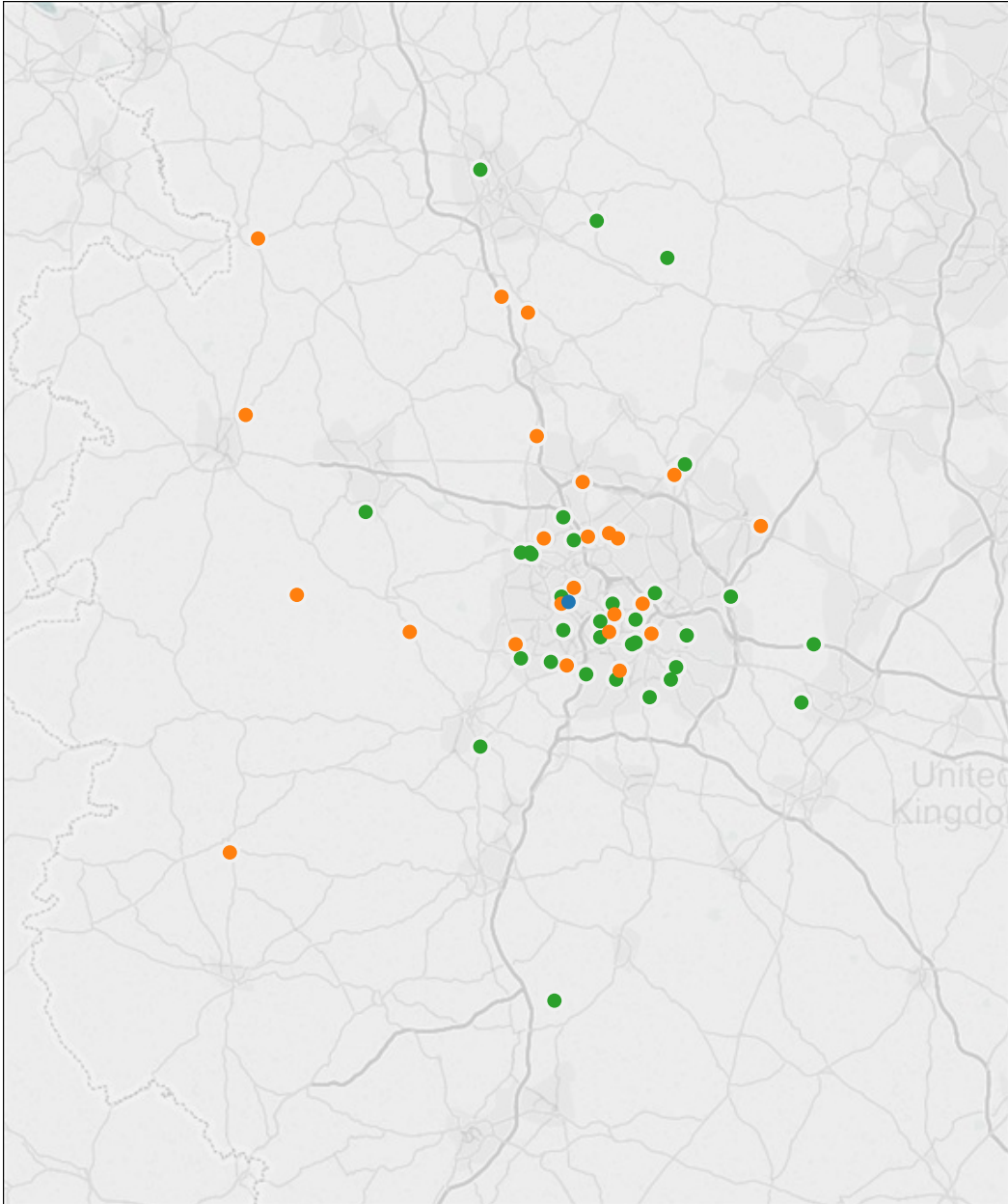


callsign ■ COS01 ■ HMED03 ■ MD098

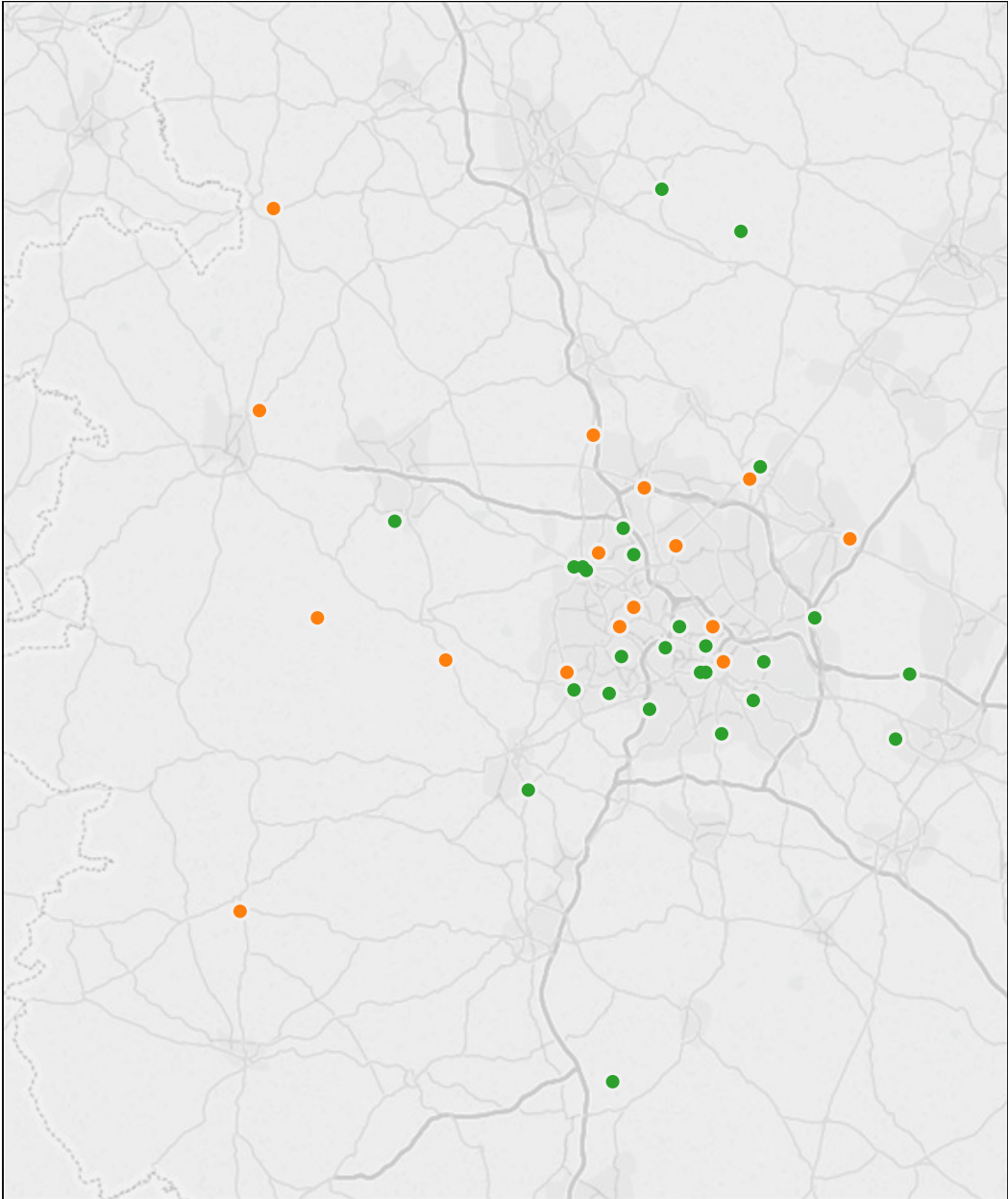
MERIT Activity (Trauma +ve cases only)

2015/16

Allocated Incidents



Attended Incidents

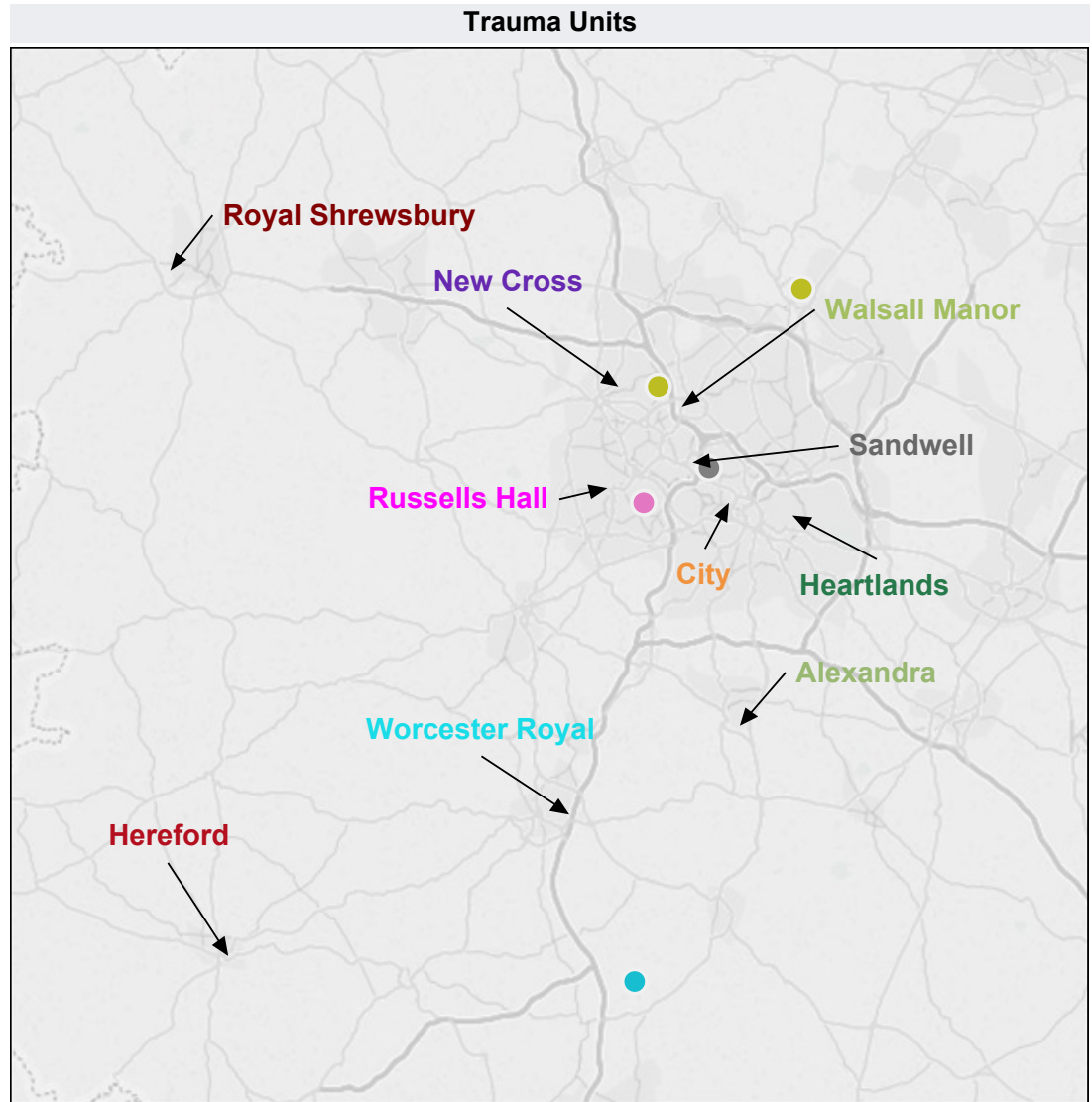
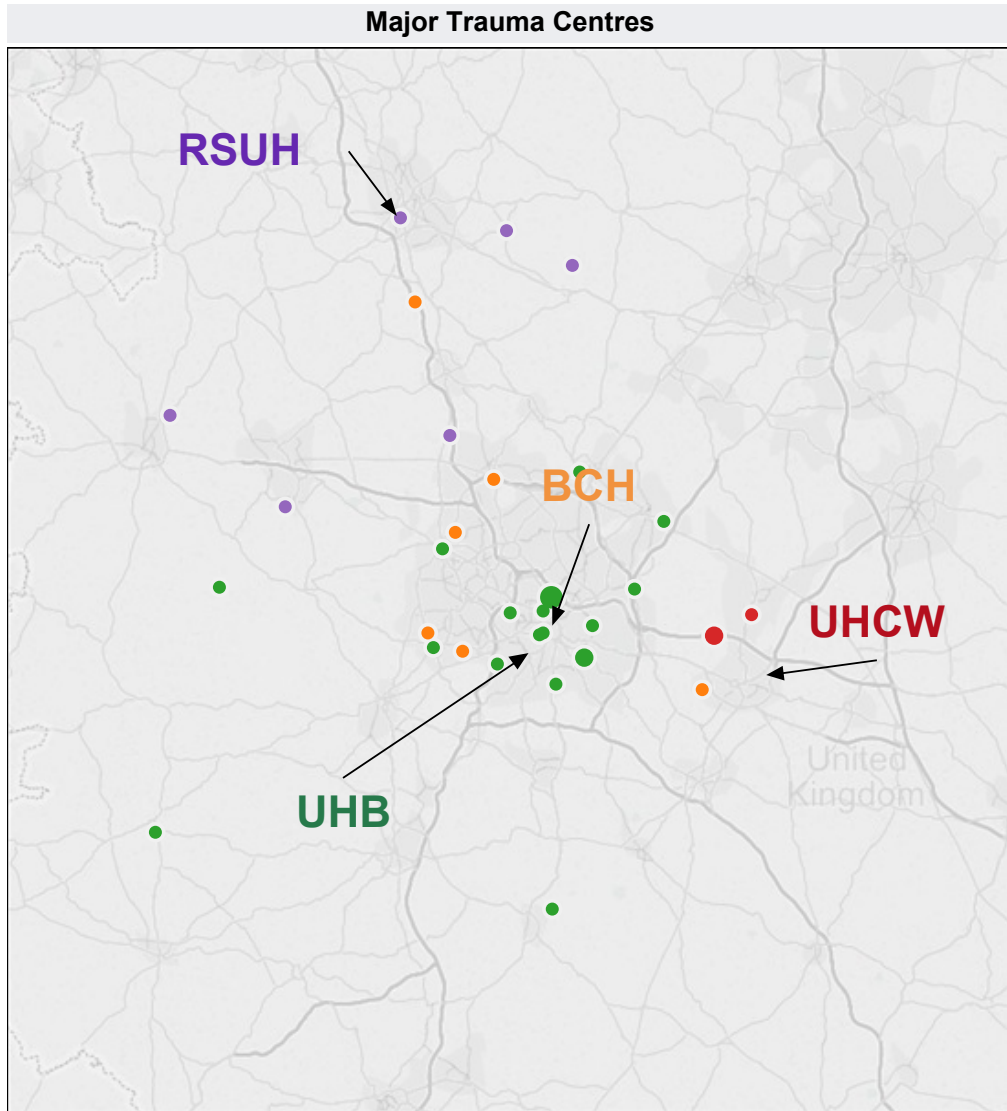


callsign ■ COS01 ■ HMED03 ■ MD098

This data does not include cases where the crews are not contacting the Regional Trauma Desk, any trauma transfers or cases which are responded to by out of area resources.

Incident Location of Trauma +ve Patients Conveyed to MTCs and TUs by MERIT

2015/16



- Major Trauma Centre**
- Birmingham Childrens
 - RSUH
 - UHB
 - UHCW

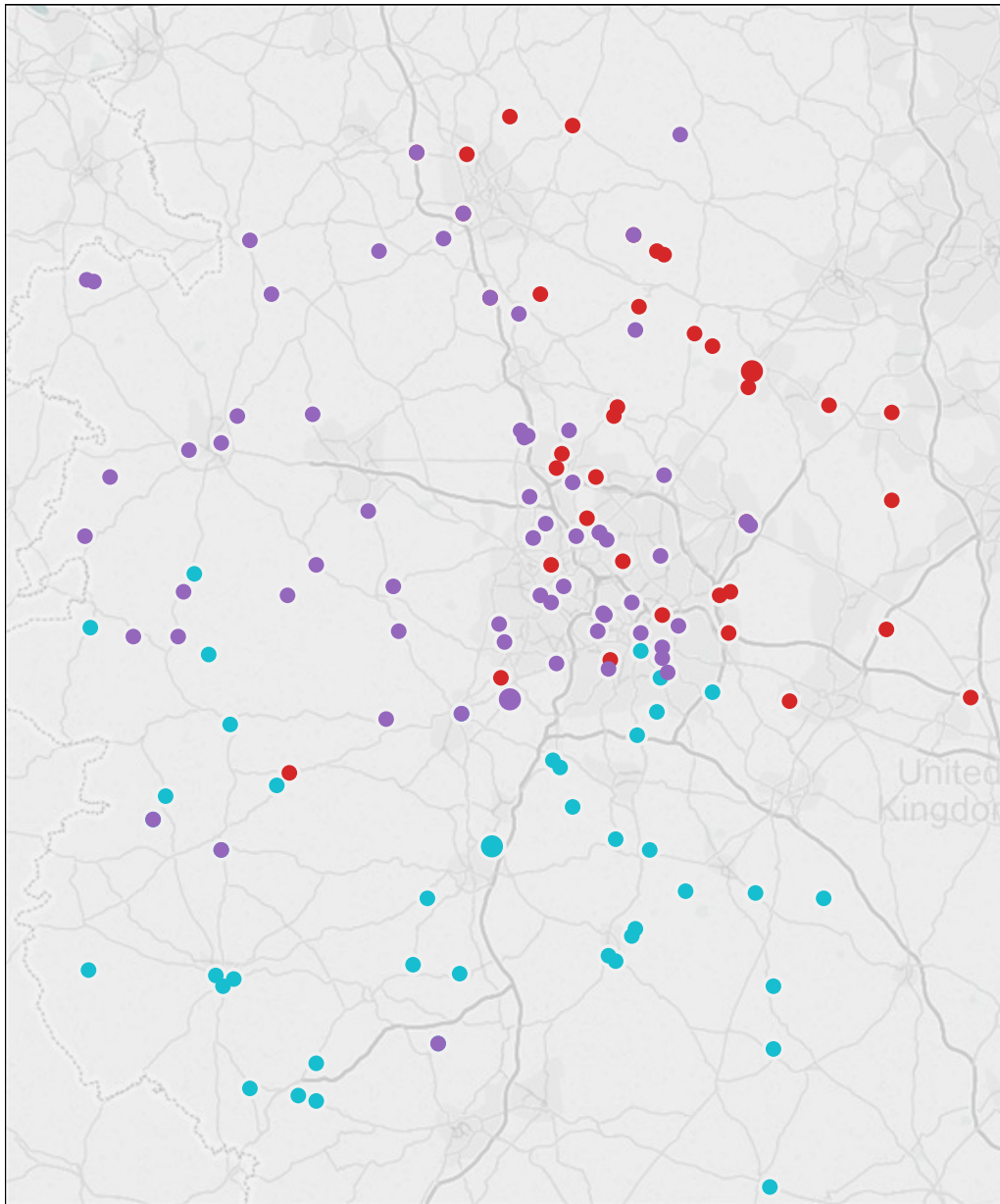
- Trauma Unit**
- Russells Hall
 - Sandwell
 - Walsall Manor
 - Worcester Royal

This data does not include cases where the crews are not contacting the Regional Trauma Desk, any trauma transfers or cases which are responded to by out of area resources.

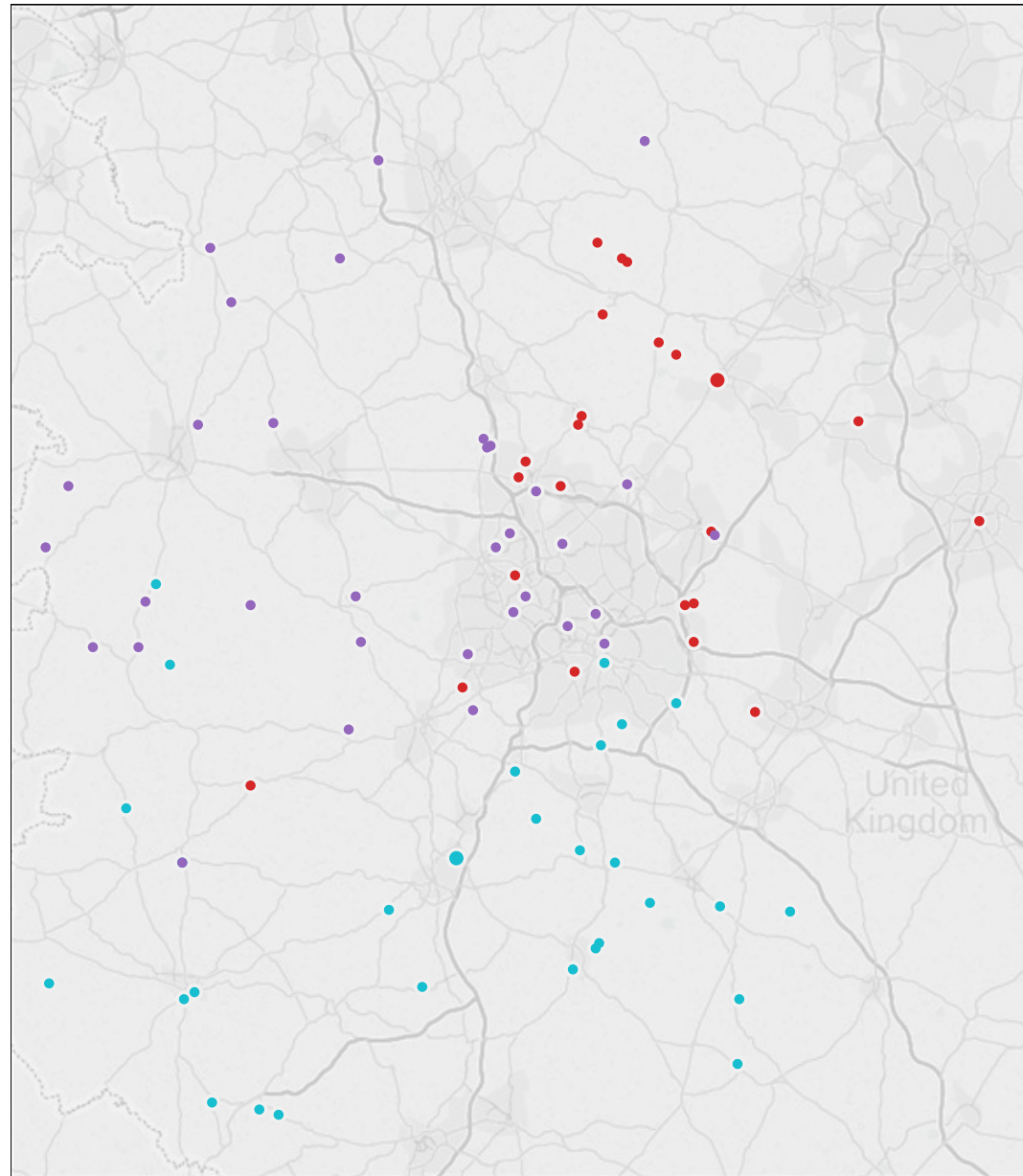
Air Ambulance Activity (All cases from CAD)

2015/16

Allocated Incidents



Attended Incidents



callsign

HMED03

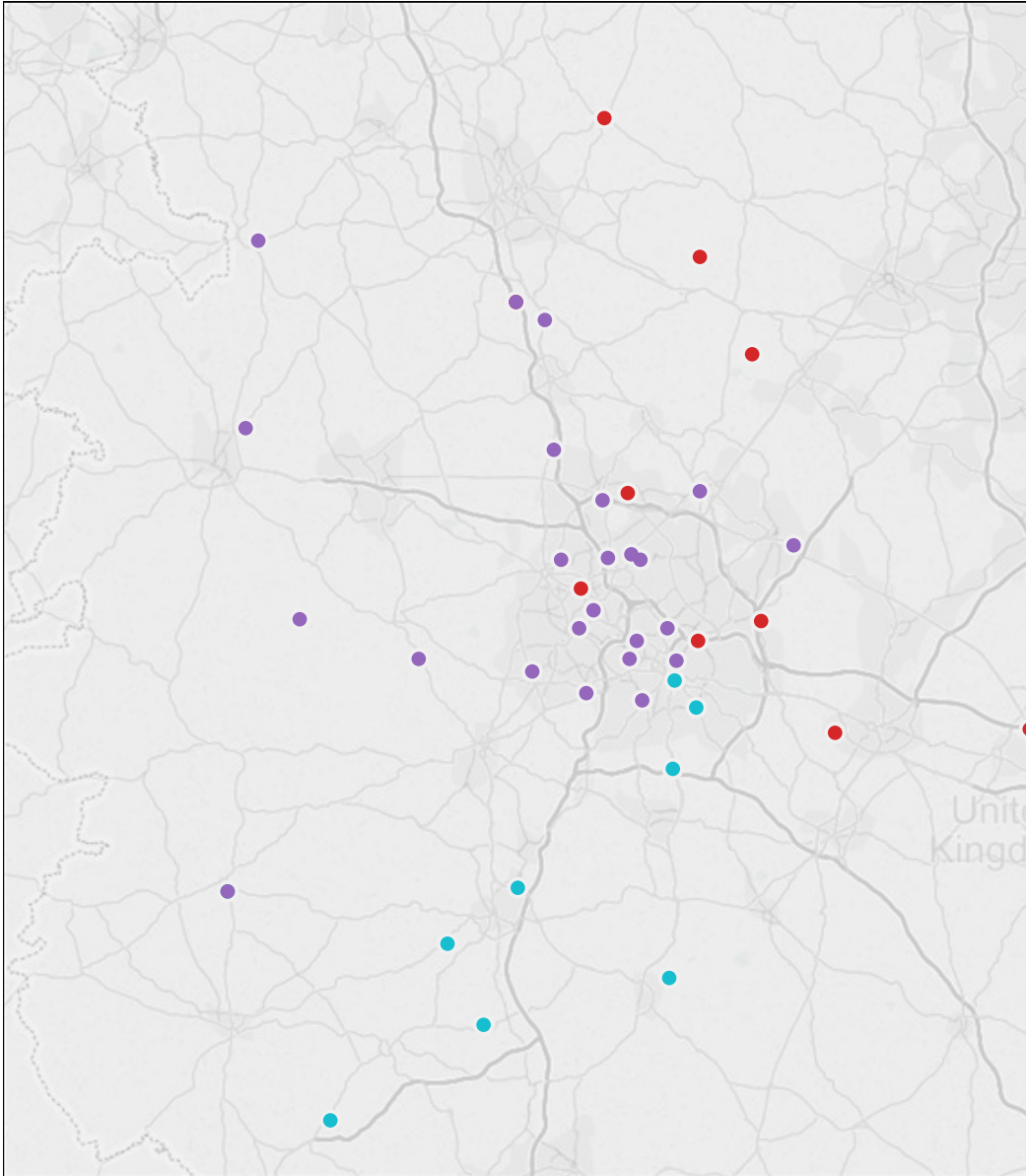
HMED06

HMED09

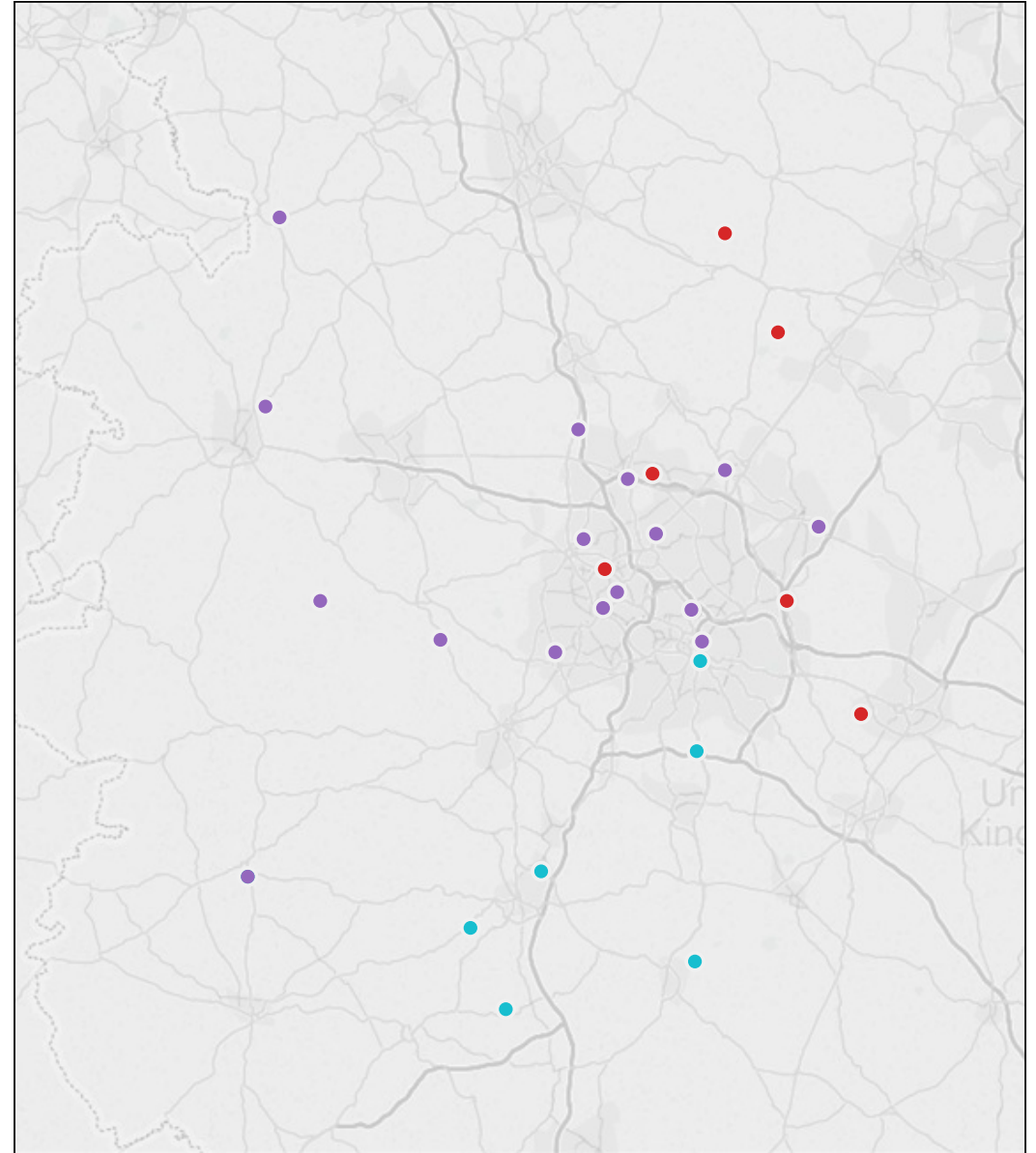
Air Ambulance Activity (Trauma +ve cases only)

2015/16

Allocated Incidents



Attended Incidents

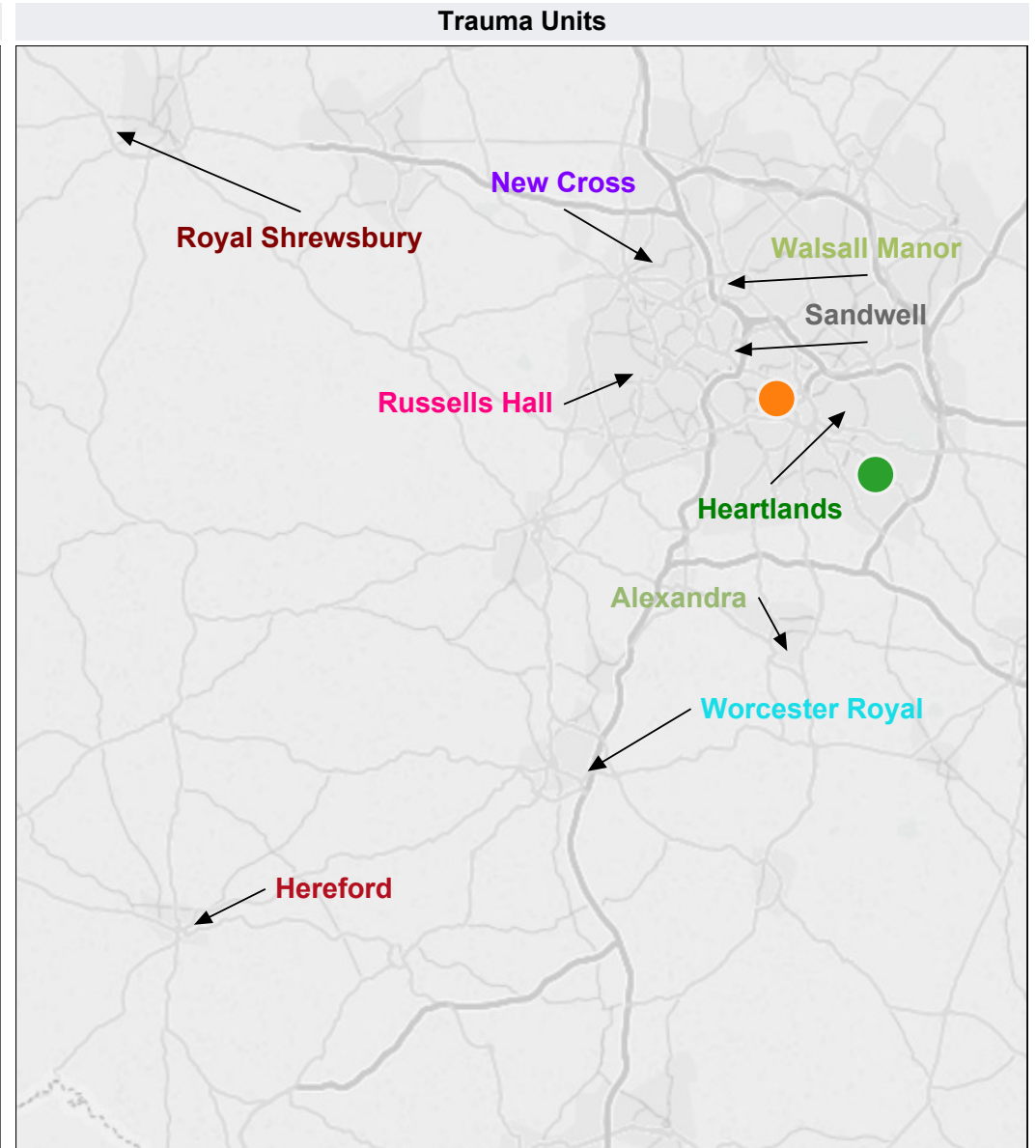
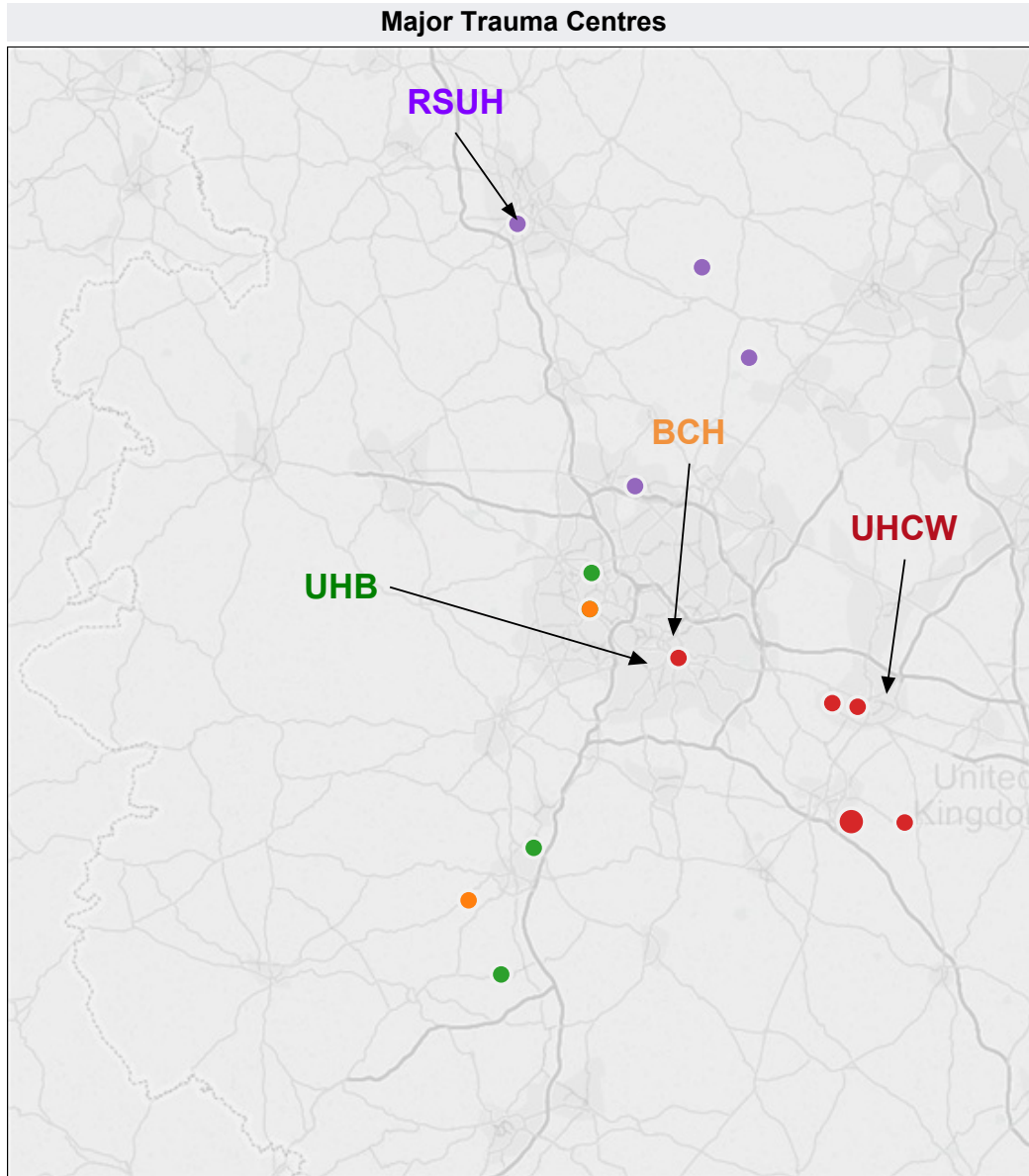


callsign ■ HMED03 ■ HMED06 ■ HMED09

This data does not include cases where the crews are not contacting the Regional Trauma Desk, any trauma transfers or cases which are responded to by out of area resources.

Incident Location of Trauma +ve Patients Conveyed to MTCs and TUs by Air Ambulance

2015/16



- Major Trauma Centre**
- Birmingham Childrens
 - RSUH
 - UHB
 - UHCW

- Trauma Unit**
- City
 - Heartlands

This data does not include cases where the crews are not contacting the Regional Trauma Desk, any trauma transfers or cases which are responded to by out of area resources.