



TUF-TITE® INTRODUCES

36" TRENCH PAN™



Comes Fully Assembled



Pre-Sloped — Industrial Strength

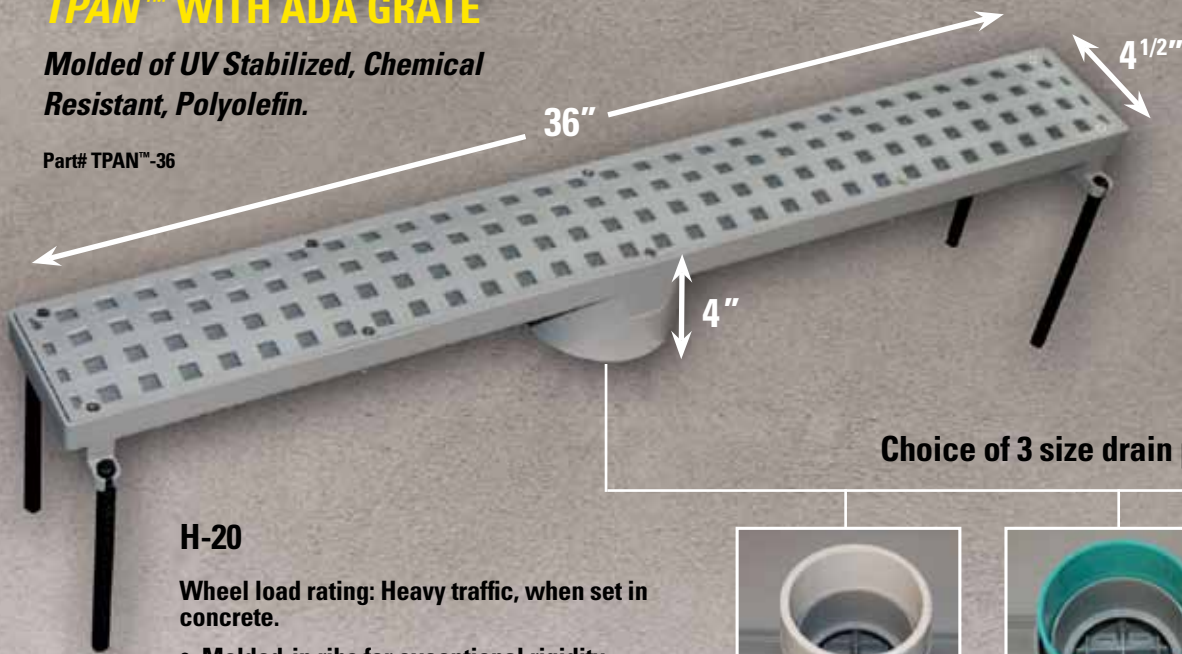


H-20 Rated

TPAN™ WITH ADA GRATE

Molded of UV Stabilized, Chemical Resistant, Polyolefin.

Part# TPAN™-36



90° Corner

No extra pieces needed. One pre-sloped, pre-assembled TPAN™ does it all.

Choice of 3 size drain pipes.

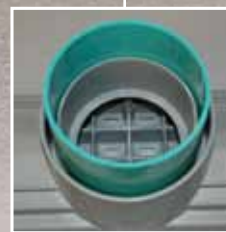
H-20

Wheel load rating: Heavy traffic, when set in concrete.

- Molded-in ribs for exceptional rigidity
- 235 p.s.i. Industrial strength
- Grate complies with American Disabilities Act.



4" Sch. 40

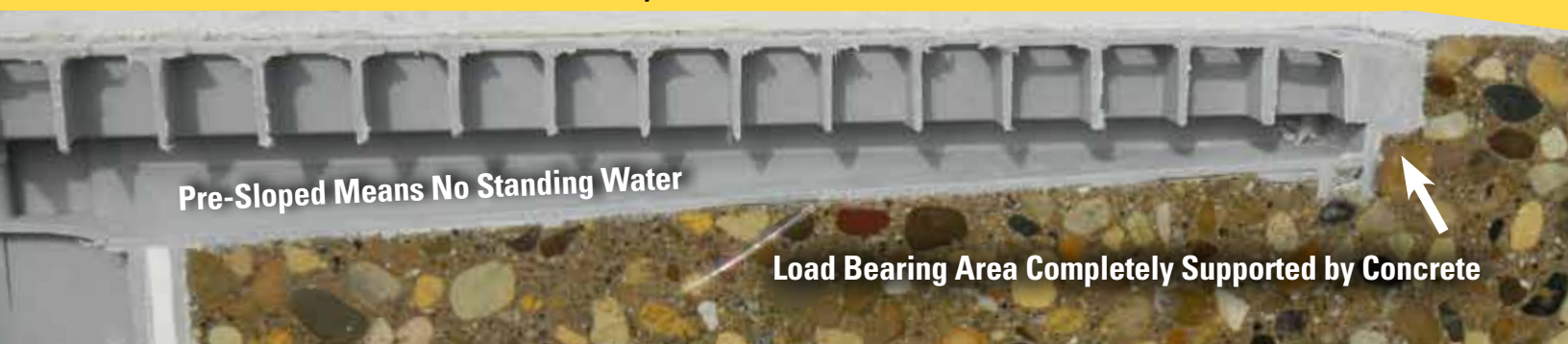


4" SDR 35



3" Sch. 40

Inside Features: TPAN™ Cut Away



Pre-Sloped Means No Standing Water

Load Bearing Area Completely Supported by Concrete



Tuf-Tite®, Inc. 1200 Flex Court, Lake Zurich, IL 60047

www.tuf-tite.com | 800.382.7009

© 2011 Tuf-Tite®, Inc. All rights reserved.


1. STRING LINE

Set string line at slab elevation. Grate must be in place when pouring concrete.


2. DETERMINE DEPTH

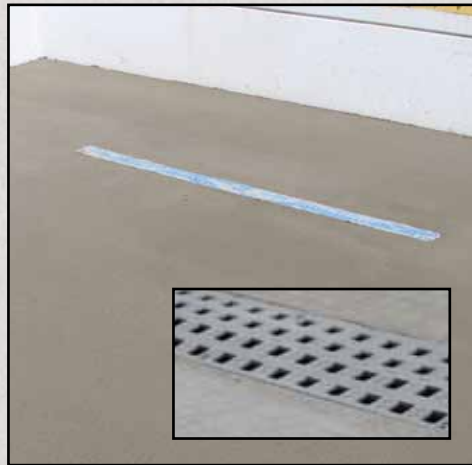
Center **TPAN™** on string line and determine depth of pipe trench. Then install vertical rebar to brace **TPAN™** at desired elevation.


3. GLUE & BACKFILL

Glue PVC pipe together and backfill.


4. POUR CONCRETE

Pour ready mix under and around **TPAN™** making sure pan is completely supported by concrete. Cover grate with masking tape to provide for easy cleanup.


5. TROWEL

Trowel to desired finish making sure concrete is flush with edge of **TPAN™**. DO NOT radius edge around **TPAN™**.


6. CURE

Allow concrete to properly cure before allowing heavy traffic.