

BC 3-5 REPLACING MIXING ARM MOTOR:

1. **FIRST UNPLUG ROASTER FROM ALL POWERE SOURCES**

IF YOU NEED TO REPLACE THE MIXING MOTOR, FIRST OPEN THE DOOR UNDER THE COOLING TRAY.



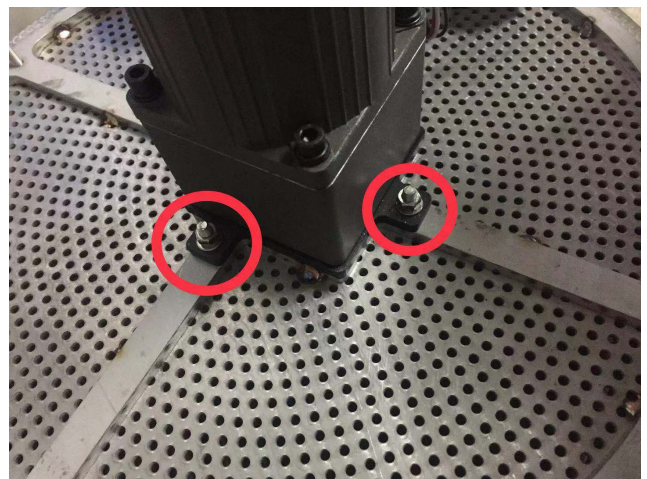
2. **SECOND, THERE ARE 4 SCREWS FIXED TO THE COOLING TRAY, YOU NEED LOOSEN THEM.**



3. **THIRD, REMOVE THE COOLING TRAY FROM THE MACHINE.**

4. **LOOSEN FOUR SCREWS AND REMOVE THE MOTOR FROM THE COOLING TRAY.**

5. **IMPORTANT:** EFFECTIVE IN 2021 WE JUST FOUND OUT THE ADDKA MOTOR CO. CHANGED THE WIRING SETUP BUT DID NOT INCLUDE A NEW WIRE DIAGRAM IN THE BOX. PLEASE SEE THE NEW WIRING BELOW AND TEST BEFORE REASSEMBLY



BC 3-5 REPLACING MIXING ARM MOTOR:

6. (8.3.21) THE MOTOR FACTORY CHANGED THE WIRING COLOR CODES ON THE MIXING MOTOR WITHOUT INFORMING THEIR CLIENTS.

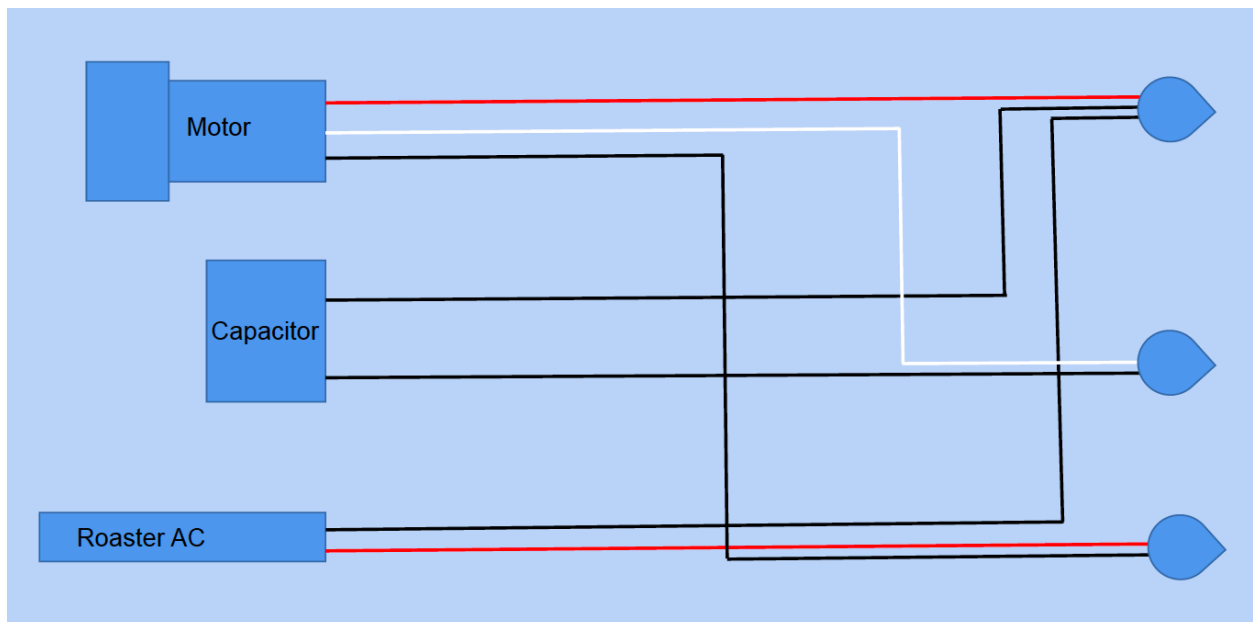
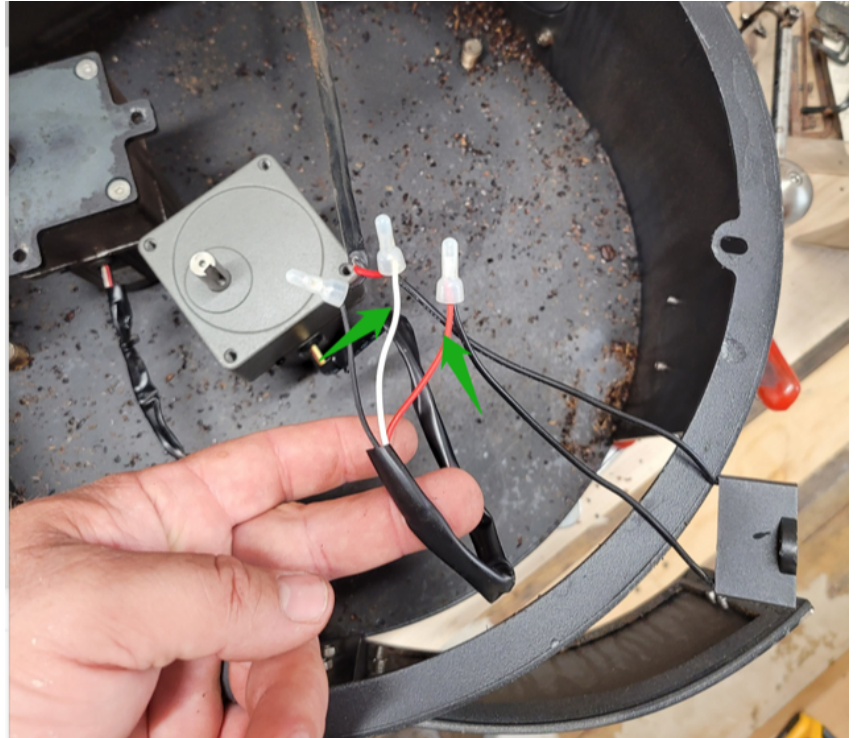
THE RESULT IS THAT IF YOU WIRE THE COLORS EXACTLY AS BEFORE (SEEN IN ATTACHED PICTURE) THE MOTOR ON THE MIXING ARMS WILL GO IN REVERSE WHICH WILL NOT WORK PROPERLY.

3 COLORS ON MOTOR

SOLUTION: (SEE DRAWINGS ATTACHED)

AFTER REMOVING OLD MOTOR CHANGE OUT THE WIRES BETWEEN THE RED AND WHITE WIRES ON

RETEST BEFORE REASSEMBLY OF MACHINE: THEN AFTER ALL WIRES ARE CAPPED WITH WIRE NUTS OR TEMPORARILY WITH ELECTRICAL TAPE YOU CAN PLUS ROASTER INTO POWER AND TEST TO MAKE SURE UNIT RUNS IN



BC 3-5 REPLACING MIXING ARM MOTOR:

