

PIN TUMBLER SERVICE KIT & PINS

A



ASK8 INCLUDES:

- 100 x bottom pins 1-8
- 100 x master pins 2-7
- 100 x top pins
- 100 x driver springs
- 12 x small A5000 series ball bearings
- 12 x large A700 series ball bearings
- 25 x security screws
- 25 x security nuts
- 2 x A700 series trap doors
- 4 x A5000 series trap doors
- 1 x American Lock 6 pin, APTC14 cylinder
- 2 x A700 series actuators
- 4 x A5000 series actuators
- 1 x American Lock 5 pin, APTC12 cylinder
- 10 x snap rings
- 1 x follower tool

MFG #	DESCRIPTION	EZ #
REPLACEMENT PARTS KIT		
ASK8	Pin Tumbler Service Kit	000639
REPLACEMENT PINS		
APKG3653010	Mushroom Driver	037299
APKG3681050	#2 Master	000610
APKG3681010	#3 Master	000611
APKG3681020	#4 Master	000612
APKG3681030	#5 Master	000613
APKG3681040	#6 Master	000614
APKG3682010	#1 Bottom	000601
APKG3682020	#2 Bottom	000602
APKG3682030	#3 Bottom	000603
APKG3682090	#4 Bottom	000604
APKG3682050	#5 Bottom	000605
APKG3682060	#6 Bottom	000606
APKG3682070	#7 Bottom	000607
APKG3682080	#8 Bottom	000608

PIN TUMBLER KEYBLANKS



MFG #	DESCRIPTION	EZ #
AK5BOX	5 Pin Tumbler Key Blank	000634
AK6BOX	6 Pin Tumbler Key Blank	000635

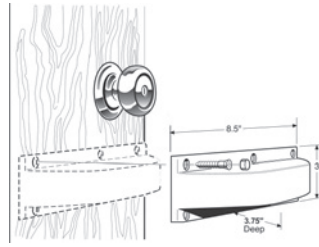
KNOB & LEVER PROTECTOR



K12



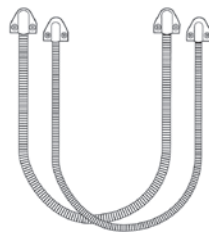
K12D



- Protect-A-Lok is made from Lexan® poly carbonate which is virtually indestructible
- For use in areas where locks may have a chance of getting hit by carts, forklifts or vehicles
- Installs in minutes

MFG #	FINISH	EZ #
K12	Cream	008210
K12D	Duranodic	008211

ARMoured DOOR LOOP



K DS12

- 1/4" flexible stainless steel conduit
- Stainless steel end pieces and mounting screws
- For transfer of low-voltage electrical current from the door to the door frame

MFG #	LENGTH	EZ #
K DS	18"	078599
K DS12	12"	085452

CARBIDE TIP DRILL BITS



- High quality specially sharpened on a diamond wheel
- Ideal for penetrating hard plate and other demanding metal work

MFG #	DIAMETER	LENGTH	EZ #
K14X6	1/4"	6"	008221
K38X6	3/8"	6"	008223

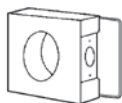
WELDABLE GATE BOXES



K BXA/R



K BXES3A



K BXSGL

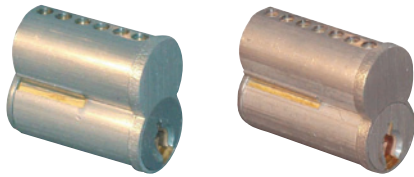


K BXSIM

14 GAUGE STEEL BOX TO INSTALL LOCKS, EXIT DEVICES, & ELECTRIC STRIKES ON GATES

MFG #	APPLICATION	SIZE (H X L X W)	EZ #
K BXSGL234	Single Key-In-Knob/Deadbolt, 2-3/4" Backset	3-1/2 x 4-3/4 x 1-5/8	035848
K BXSGL	Single Key-In-Knob/Deadbolt, 2-3/8" Backset	3-1/2 x 4-1/2 x 1-5/8	068179
K BXA/R	Adams Rite 4500/4700/4900 1-1/8" Deadlatch	7 x 2-1/16 x 1-13/16	029033
K BXES2	Adams Rite 7170, Eff Eff Strike 4 & 7 Series, RCI 4104, 7104	5-1/16 x 2-3/8 x 1-3/4	029036
K BXES3A	Adams Rite 7100/7140/7160, HES 5000 With 501 Option	5-1/16 x 2-3/8 x 1-3/4	029043
K BXSIM	Kaba Simplex 1000, 5000, Eplex 5X00, Alarm Lock Trilogy	9-1/4 x 5-1/2 x 1-3/4	044917
K BXSIM 7004	Kaba Simplex 7004/7014 series	6-1/2" x 4-5/8" x 1-3/8"	100265

SMALL FORMAT INTERCHANGEABLE (I/C) CORES



206

207

- For Best, Arrow, Falcon and other manufacturer products that use small format I/C cores
- Apart from stocked keyways, other keyways available are B, C, E, F, G, H, K, L, M, Q, 1C & 1D

MFG #	KEYWAY	KEYING	PINS	EZ #
206A26D	A	Uncombined	6	007673
206A26D KA2	A	KA/2	6	035855
206C A26D KD	A	KD	6	051374
206D26D	D	Uncombined	6	007679
206J26D	J	Uncombined	6	007689
207A26D	A	Uncombined	7	007693
207J26D	J	Uncombined	7	007709
CONTROL KEY FOR A KEYED CORES				
CON KEY856947				076524

K

RIM & MORTISE CYLINDER SHELLS



308

316

406
407

316

- Tapered cylinder head (316)
- Set screw from inside cylinder can be used to secure cylinder to lock case

MFG #	PINS	CAM	LENGTH	EZ #
RIM CYLINDER				
308 26D	6	—		007720
MORTISE CYLINDER WITH CAM				
316 601 26D	6	Adams Rite	1-3/8"	007726
MORTISE CYLINDERS LESS CAMS - USE 700 SERIES CAMS				
406 26D	6	Optional	1-1/4"	073500
407 26D	7	Optional	1-3/8"	073501

TOOLS & CAPS



606

610

CAPS

MFG #	DESCRIPTION	EZ #
606	Capping Block & Punch	035856
610	Ejector Punch	035857
CAPS	Cylinder Caps (Package/500)	035854

CAMS FOR 400 SERIES MORTISE CYLINDERS



700

701

702

702L

702S

MFG #	CAMS	EZ #
700	Standard	073503
701	Adams Rite	073504
702	Cloverleaf	073505
702L	Schlage	073506
702S	Sargent	073558

WEISER BRASS PINS & MINI DUR-X FOR WEISER CYLINDERS



LMDWSR

LMDWSR

- Made of super-tough polyethylene
- Dimensions: 7-1/2" x 4-1/2" x 1-1/2"
- 8 master pins
- 1 driver pins
- 10 bottom pins
- Cylinder springs
- Pins made to exact manufacturer's specifications

MFG #	DESCRIPTION	EZ #	MFG #	DESCRIPTION	EZ #
LMDWSR	Weiser	050319	8553 5	5 Bottom Pin	041724
TOP, BOTTOM & MASTER PINS					
8552 0	Top Pin	061090	8553 6	6 Bottom Pin	041725
8553 0	0 Bottom Pin	041716	8553 7	7 Bottom Pin	041726
8553 1	1 Bottom Pin	041717	8553 8	8 Bottom Pin	041727
8553 2	2 Bottom Pin	041718	8553 9	9 Bottom Pin	041728
8553 3	3 Bottom Pin	041719	8580 2	2 Master Pin	061082
8553 4	4 Bottom Pin	041720	8580 3	3 Master Pin	061083

UNIVERSAL PIN REFILL PACKAGE, SPRING, SHIMS & KEYING TOOLS



115LTV1



LCR005



LKG001

LCR005

- Cap tool for Schlage, Weiser, Arrow, and Falcon cylinders, and modified to accommodate extended tailpiece for Schlage cylinder

LKG001

- Key Gauge for Kwikset, Schlage, Weiser, Weslock, & Master

LPB001

- Maple pin block holds 5 cylinder plugs
- Great for repinning multiple cylinders, master, grand master pinning

LPDMED

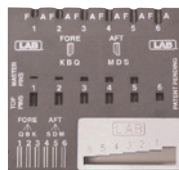
- Identifies Medeco Biaxial pin lengths and angles
- Determines key cut depth

LZT001

- Stainless tweezer has positive grip on pin for loading



LPB001



LPDMED



LSMOLS



LZT001

MFG #	DESCRIPTION	EZ #
STANDARD UNIVERSAL .115		
115LTV1	Long .115 Tangle Resistant Springs	086798
115LV1	115 Long Springs	042153
115SS1V	Short Bronze Springs	039475
115SV1	115 Short Springs	041018
LSMOLS25V	Vial Curved Shims (25 Per Pack)	039538
KEYING TOOLS		
LCR005	Cylinder Cap Remover	047577
LKG001	5 In 1 Key Gauge	039537
LPB001	Pin Block	008289
LPDMED	Biaxial Decoder	086797
LZT001	Formed End Tweezers	045038

L