

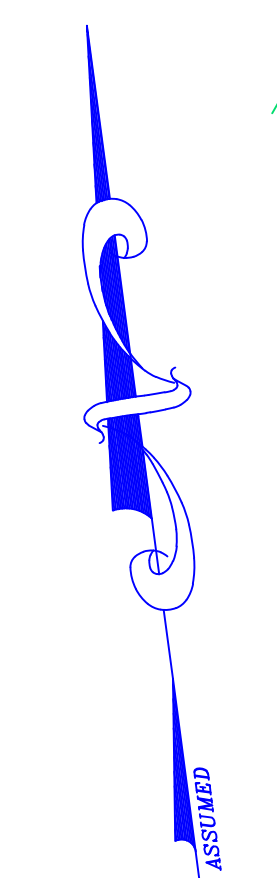
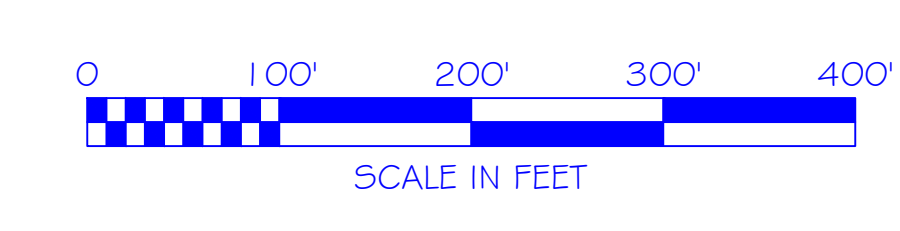
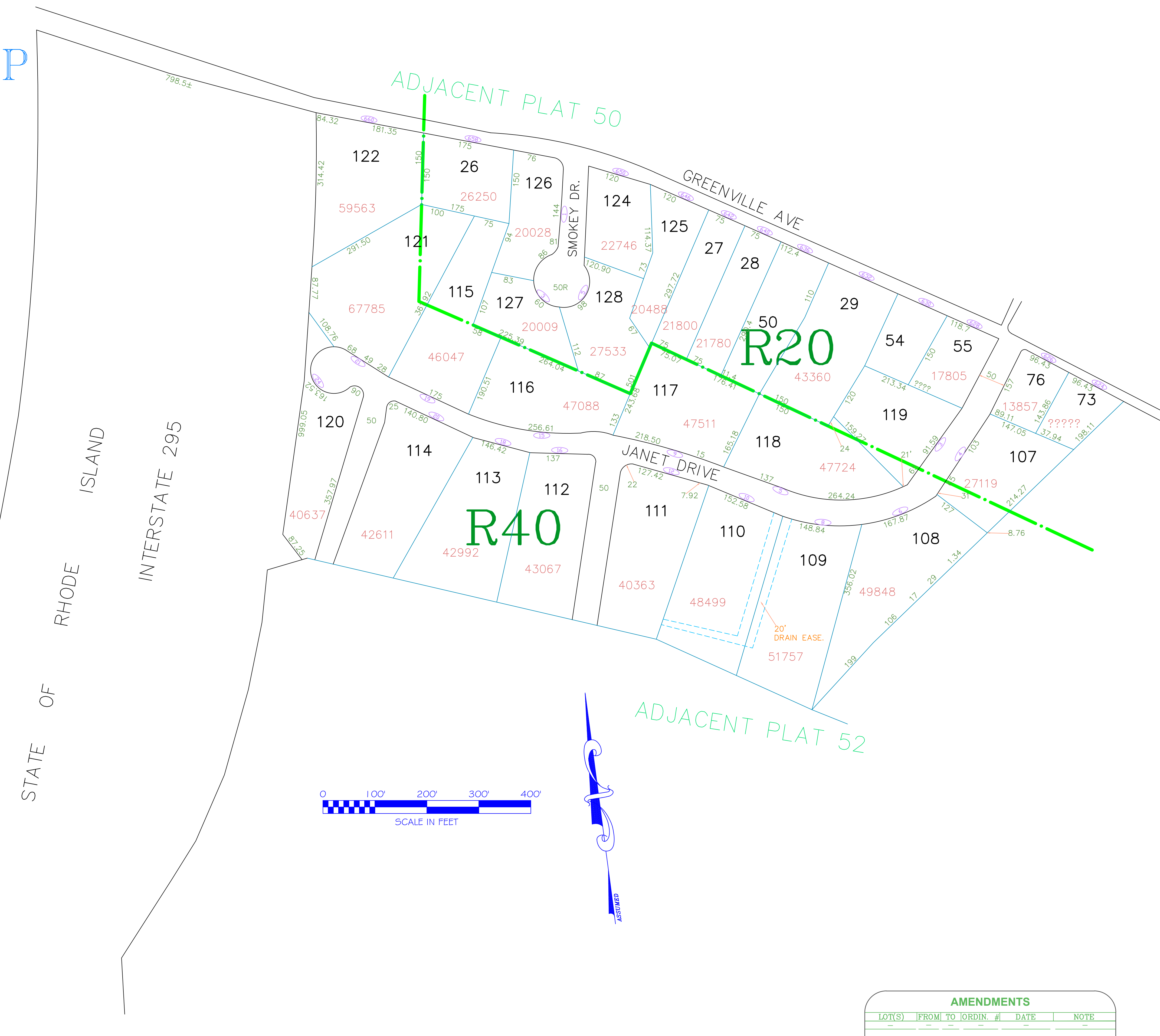
ASSESSOR'S MAP  
SHOWING ZONING DISTRICTS

ADJACENT PLAT 53/2

ADJACENT PLAT 55/2

ADJACENT PLAT 50

ADJACENT PLAT 52



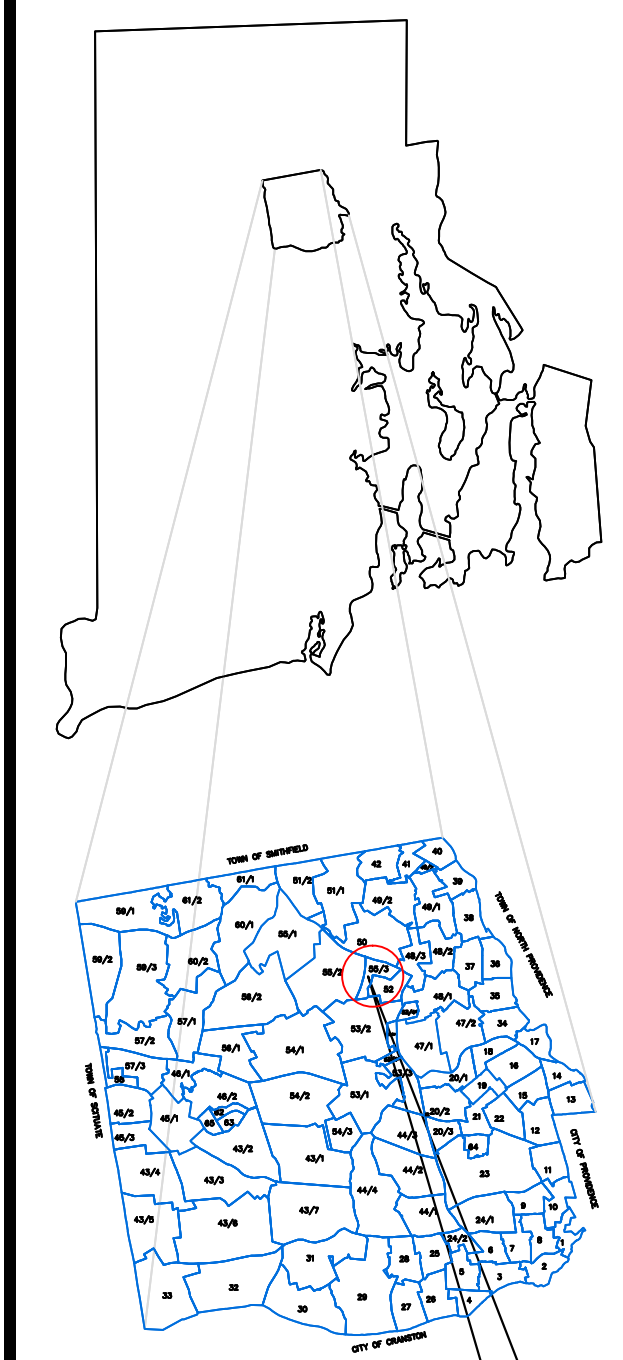
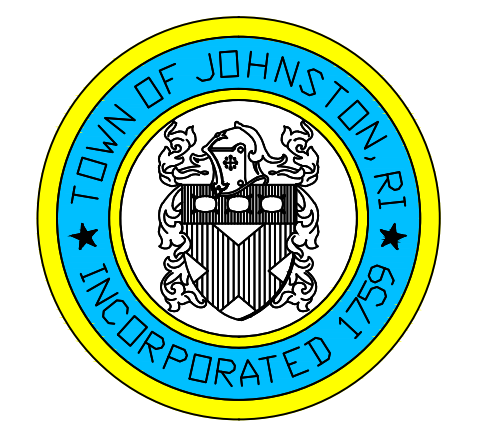
R20

R40

AMENDMENTS					
LOT(S)	FROM	TO	ORDIN. #	DATE	NOTE

Assessor's Plat Number  
**55/3**

STATE OF RHODE ISLAND  
TOWN OF JOHNSTON  
PROVIDENCE COUNTY  
INCORPORATED 1759  
ASSESSOR'S OFFICE  
1385 HARTFORD AVENUE  
JOHNSTON, RHODE ISLAND  
02919



PLAT INDEX  
AREA

Scale: 1:100  
Revised By: Benjamin Ng  
Last updated: January 05, 2015  
Date printed: January 04, 2016

For copies of plat maps, please go to the DPW at 100 Irons Avenue Johnston Rhode Island. Thank you.

NOTE: This map was prepared for the use of the Town of Johnston for assessment and illustrative purposes only. It does not represent a survey of the premises. No liability is assumed as to the sufficiency or accuracy of the data delineated hereon.