

Three Ladies

CBK Needlepoint Collection *Stitch Guide*

Janis Mattox • “Three Ladies” • JJM 08



Stitch Guide by Janet M. Perry

THREE LADIES

CANVAS BY CBK NEEDLEPOINT COLLECTION

STITCH GUIDE BY JANET M. PERRY

MATERIALS

- 1 skein each Paternayan Persian Wool
 - 831 (dark auburn)
 - 832 (light auburn)
 - 220 (black)
 - 682 (green)
- 3 skeins Anchor #5 pearl cotton 290 (yellow)
- 1 skein each DMC embroidery floss
 - 318 (gray)
 - B5200 (white)
 - 754 (flesh)
 - 951 (dark flesh)
- 1 skein Vineyard Silks Classic C-038 (brown)
- 1 spool each Kreinik Tapestry (#12) braid
 - 061 (red)
 - 152V (orange)
 - 032 (pearl)
 - 018HL (navy)
- 1 card each Rainbow Gallery Splendor
 - S800 (white)
 - S1052 (green)
 - S821 (red)
- 1 skein each brown paper packages Silk & Ivory
 - 101 Larkspur (dark blue)
 - 70 Delphinium (light blue)
 - 91 Big Orange (dark orange)
 - 138 Apricot (light orange)
 - 117 Sugarplum (light violet)
- 1 card each Rainbow Gallery Rainbow Linen
 - R466 (brown)
 - R467 (dark brown)

- 1 card Rainbow Gallery Splendor silk ribbon R820 (red)
- 1 card Rainbow Gallery Soft Sheen Fyre Werks FT5 (navy)
- 1 skein Needle Necessities Overdyed Floss 1371 (turquoise)
- 1 Mill Hill Treasures 12222 Black Large Flat Star
- 1 Zecca button 431, or 7/8" flat polymer clay button of your choice

Stranded silk or embroidery floss from your stash
blue, black, green, red, orange, turquoise, dark blue, violet

Throughout this stitch guide threads from your stash are used. In some case, like they eyes, only a small amount of thread is used. In other cases, like the large dots on the Sailboat Lady's dress, using threads from either your stash or threads which are used in other areas of this canvas will add an appealing texture and variety to your stitching. Feel free to experiment!

STEP-BY-STEP INSTRUCTIONS

SAILBOAT LADY - LEFT

HAT

Stitch the darker lines of the hat in **Basketweave** dark brown (R467) Rainbow Linen. Stitch the remainder of the hat in **Reverse Basketweave**, Figure 1, using brown (R466) Rainbow Linen.

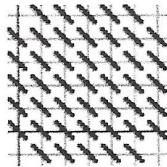


FIGURE 1: REVERSE BASKETWEAVE

Add the bow in **Slanted Gobelin** Figure 2, next page, using red (R820) Splendor Silk Ribbon. Several long Gobelins Stitches will make each side of the ribbon. More than one stitch will share the holes nearest the star. Be sure to keep the thread completely flat and smooth; this enhances the ribbon effect.

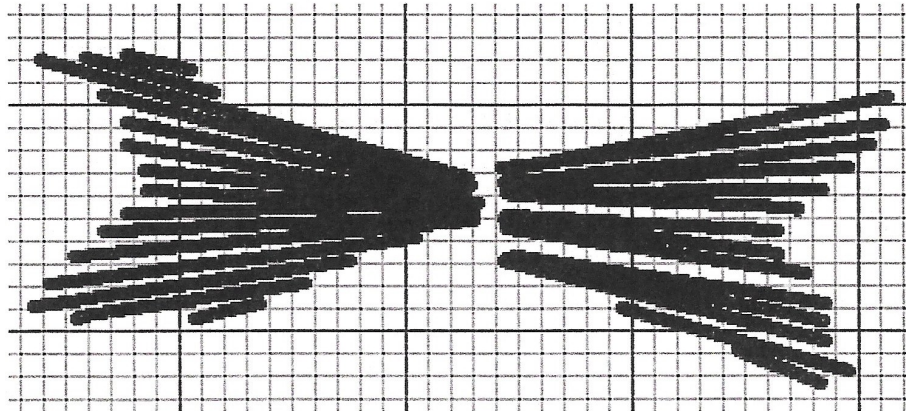


FIGURE 2: SLANTED GOBELIN RIBBON

In general, except for the wider ends, the stitches go from the edge of the ribbon to the center end. Make these stitches first. Then, as needed, fill in with shorter stitches at the top and bottom ends.

Add the star using a scrap of black floss to attach the star Mill Hill Treasure. Leave the white area behind the star unstitched.

FACE, HAIR, AND HANDS

Stitch the face in **Basketweave**, as painted, using four strands of flesh (754) or dark flesh (951) floss. Stitch the eyes in **Needlepoint Cross Stitch**, Figure 3, using a scrap of black floss or metallic from your stash. Stitch the mouth in **Needlepoint Cross Stitch**, Figure 1, below, using four strands red Splendor (S821).

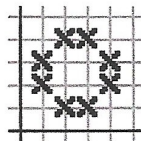


FIGURE 3: NEEDLEPOINT CROSS STITCH

Stitch the hands in **Basketweave** using four strands of flesh (754) floss.

Stitch the hair in **Basketweave** using one strand of black(220) Persian wool.

Stitch the earrings in **Smyrna Cross**, Figure 4, using four strands of green (S1052) Splendor.



FIGURE 4: SMYRNA CROSS

DRESS

Stitch the white vertical line down the center of the dress in **Continental** using four strands of white (S800) Splendor. The red line on the left is stitched in **Diagonal Gobelin**, Figure 5, using four strands of red (S821) Splendor.



FIGURE 5: DIAGONAL GOBELIN

The red line on the right is stitched in **Reverse Diagonal Gobelin**, Figure 6, using four strands of red (S821) Splendor.



FIGURE 6: REVERSE DIAGONAL GOBELIN

Stitch the narrow red lines throughout the dress in **Whipped Backstitch**, Figure 7. Use four **unplied** strands of red (S821) Splendor for the Backstitch, and two strands of red (S821) Splendor for the wrapping.

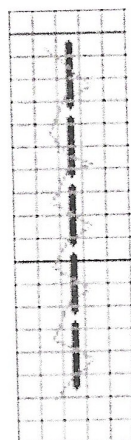


FIGURE 7: WHIPPED BACKSTITCH

Whipped Backstitch is made in two steps. First a line of Backstitch is made, with the
©2007 Napa Needlepoint (<http://www.napaneedlepoint.com>). All rights reserved.

Three Ladies

NNS91 - 5

stitches going over at least two threads. Then this line of stitches is wrapped. To wrap the stitches, bring your needle out of the canvas under the first stitch and to one side of it. Wrap your needle over the first stitch and then under the second stitch, ending at the same side as you first started. Repeat this process for each line,

Once all the red lines are stitched, stitch the white areas in **Basketweave** using three strands of white (S800) Splendor.

Stitch the wider red and green stripes on the collar and sleeves in **Basketweave** using four strands of either red (S821) or green (S1052) Splendor. Stitch the dark blue lining of the dress in **Basketweave** using dark blue (101) Silk & Ivory.

Stitch the horizontal green lines on the skirt in **Diagonal Gobelin**, Figure 5, page 4, using four strands of green (S1052) Splendor. Stitch the red background for the large circles on the skirt in **Baby Alisha**, Figure 8, using four strands of red (S821) Splendor.

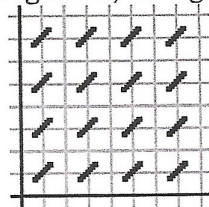


FIGURE 8: BABY ALISHA

All the dots, partial and complete, are stitched the same way. Use either stranded threads used elsewhere in this design or threads from your stash. Begin by stitching each color in **Basketweave**, using three strands of your scrap thread. Around each color you will make **Whipped Backstitch**, Figure **, page *, using the same thread. This stitch which is Backstitch wrapped with the same thread, creates a narrow, rounded border around each color. It will look like a touch of embroidery.

SAILBOAT

Stitch the mast of the sailboat in **Oblique Continental**, Figure 9, using brown (C-038) Vineyard Silks Classic.

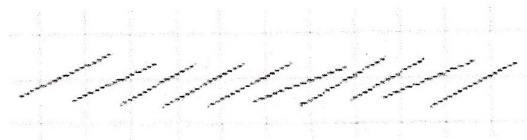


FIGURE 9: OBLIQUE CONTINENTAL

Stitch the brown areas on the boat and at the bottom of the right sail in **Continental** using brown (C-038) Vineyard Silks Classic.

Three Ladies

NNS91 - 6

Stitch the straight stripes on the sails in **Continental**, as painted, using four strands of green (S1052) or white (S800) Splendor. Stitch the diagonal green stripe on the sails in **Reverse Continental**, as painted, Figure 3, using the same threads.

Stitch the white stripe on the hull of the sailboat in **Straight Gobelin**, Figure 10, using four strands of white (S800) Splendor, Remember that the sides of the hull slant outwards on each side.



FIGURE 10: STRAIGHT GOBELIN

Stitch the aqua hull of the boat in **Needlepoint Cross Stitch**, Figure 3, page 3, using three strands of turquoise (1371) Needle Necessities floss.

NEEDLEPOINT LADY - CENTER

HAT

Stitch the hat in **Woven Plait**, Figure 11, using light blue (70) Silk & Ivory.

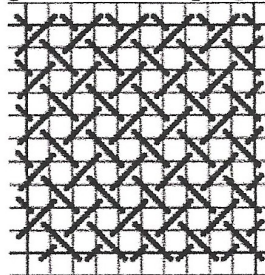


FIGURE 11: WOVEN PLAIT

Stitch the dark blue top and sides of the hat in **Basketweave** using dark blue (101) Silk & Ivory.

Stitch the dark blue ribbon in **Basketweave** using navy (FT5) Soft Sheen Fyre Werks.

FACE, HAIR, AND HANDS

Stitch the face in **Basketweave**, as painted, using four strands of flesh (754) or dark flesh (951) floss. Stitch the eyes in **Needlepoint Cross Stitch**, Figure 3, page 3, using a scrap of blue floss or metallic from you stash. Stitch the mouth in **Needlepoint Cross Stitch**, Figure 3, page 3, using four strands red Splendor (S821).

Stitch the hands in **Basketweave** using four strands of flesh (754) floss.

Stitch the hair in **Basketweave** using one strand of black (220) Persian wool.

DRESS

Stitch the scissors in **Needlepoint Cross Stitch**, Figure 3, page 3 using red (061) Kreinik Tapestry (#12) braid. Fill in the white holes with **Basketweave** using two strands of white (B5200) embroidery floss. This lighter coverage will make the holes fade away from the scissors.

Stitch the collar in **Four-way Continental**, Figure 12, using either light orange (138) or dark blue (101) Silk & Ivory.

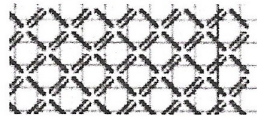


FIGURE 12: FOUR-WAY CONTINENTAL

Stitch the green bodice in **Flemish Bond Damask**, Figure 13, below, using four strands of green (S1052) Splendor and one strand of green (682) Persian wool. This is a technique called **Needlepoint Damask**. It is stitched entirely in Basketweave. The pattern comes from the contrast between the two textures of thread. The end result looks like a rich damask fabric. Use Persian Wool for the four stitch squares and silk for the remainder.

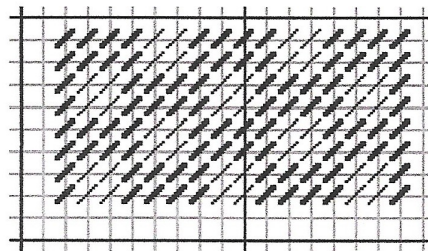


FIGURE 13: FLEMISH BOND DAMASK

Stitch the sleeves in **Tiny Knitting**, Figure 14, next page, using dark blue (101) Silk & Ivory. This stitch alternates columns of Continental and Reverse Continental. Make this stitch in columns. It creates a pretty and subtle pattern, great for narrow shapes like this one.

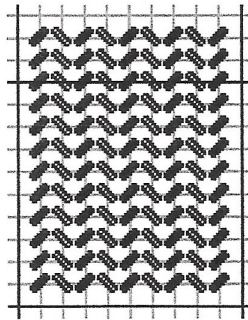


FIGURE 14: TINY KNITTING

Stitch the green and white stripes in **Diagonal Gobelin**, Figure 15, below. using four strands of green (S1052) or white (S800) Splendor. Where the area is too narrow to fit Diagonal Gobelin, use Continental. Because the width of the stripes varies, the length of the Gobelin Stitches will vary. Always make the longest possible diagonal stitch for each hole. To keep this area smooth, ply and recombine your thread and begin all stitches on the same side of the stripe.

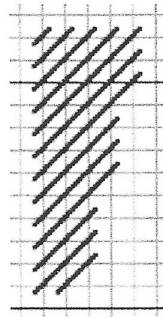


FIGURE 15: DIAGONAL GOBELIN

Stitch the light blue portion of the skirt in **Diaper**, Figure 16, next page, using light blue (70) Silk & Ivory. This stitch alternates Mosaic Stitches and Cashmere Stitches in columns. Because the two stitches are not the same height, the stitch does not line up horizontally. Find the top center of the skirt and put your first stitch there. Make a Mosaic Stitch centered here. Then fill in the other stripes on either side. This stitch also creates a nice echo of the stitch used for the bodice.

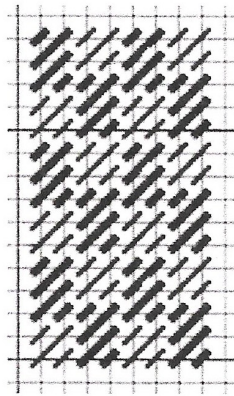


FIGURE 16: DIAPER

Stitch the dark blue borders of the skirt in **Four-way Continental**, Figure 12, page 7, using dark blue (101) Silk & Ivory.

NEEDLEPOINT

Stitch the colored areas of the needlepoint in **Basketweave**, as painted, using either four strands of gray (318) embroidery floss or orange (152V) Kreinik Tapestry (#12) braid. Leave the white areas unstitched.

Stitch the wooden frame of the needlepoint in **Diagonal Gobelin**, Figure 5, page 4, using brown (C-038) Vineyard Silks Classic. The corners are **not** mitered. Stitch the vertical sides, going straight through and then stitch the horizontal sides.

ANGEL LADY - RIGHT

HALO AND WINGS

Stitch the outline of the halo in **Needlepoint Cross Stitch**, Figure 3, page 3, using two strands of green (S1052) Splendor. Stitch the yellow dots in **Mosaic**, Figure 17, using yellow (290) #5 pearl cotton. Leave the white unstitched for contrast.



FIGURE 17: MOSAIC

Stitch the white inside of the wings in **Jackson**, Figure 18, next page, using pearl (032) Kreinik Tapestry (#12) braid. Stitch the outline of the wings in **Continental** using orange (152V) Kreinik Tapestry (#12) braid.

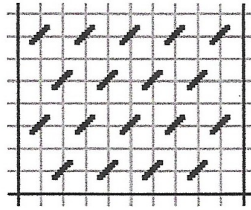


FIGURE 18: JACKSON

FACE, HAIR, AND HANDS

Stitch the face in **Basketweave**, as painted, using four strands of flesh (754) or dark flesh (951) floss. Stitch the eyes in **Needlepoint Cross Stitch**, Figure 3, page 3, using a scrap of blue floss or metallic from your stash. Stitch the mouth in **Needlepoint Cross Stitch**, Figure 3, page 3, using four strands red Splendor (S821).

Stitch the hands in **Basketweave** using four strands of flesh (754) floss.

The hair will be stitched using a technique I call **The Lazy Stitcher's French Knot**. It is done in two steps. Begin by stitching the entire hair in **Basketweave** using one strand of light auburn (832) Persian Wool. This creates a base for the knots.

Over this stitch **French Knots** using one strand of dark auburn (831) Persian Wool. Vary the size of the knots, by using different sizes of needles and different numbers of wraps. You can also mix **Colonial Knots** among the French Knots. The difference in needle size is the most effective way to vary knot size.

Continue making knots throughout the hair until you like how curly the hair looks. This method can be used anywhere that you need knots but do not want the solid dense texture of only knots.

Stitch the earrings in **Smyrna Cross**, Figure 4, page 3, using four strands of turquoise (1371) overdyed floss.

DRESS

Stitch the dark orange sleeves in **Dotted Swiss Variation**, Figure 19, next page, using dark orange (91) silk & Ivory for the Tent Stitches and orange (152V) Kreinik Tapestry (#12) braid for the Cross Stitches. Dotted Swiss is stitched the same as **Basketweave**, except every **other** stitch in every **fourth** row will be stitched in a Cross Stitch with the metallic.

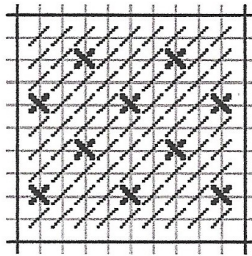


FIGURE 19: DOTTED SWISS VARIATION

Stitch the turquoise buttons in **Triple Cross**, Figure 20, below, using four strands of turquoise (1371) Needle Necessities overdyed floss. The needle comes out of the canvas at the odd numbers and goes into the canvas at the even numbers. Add the violet dots in **French Knots** using light violet (117) Silk & Ivory. Wrap the French Knots once.

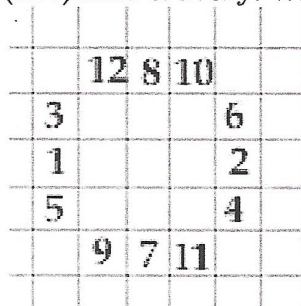


FIGURE 20: TRIPLE CROSS

Stitch the orange bodice in **Horizontal Hungarian**, Figure 21, using light orange (138) Silk & Ivory. You may have to move the French Knots slightly to fit this stitch in place.

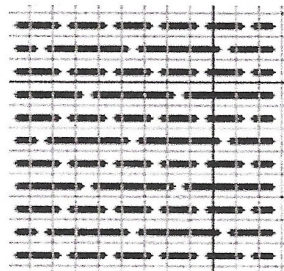


FIGURE 21: HORIZONTAL HUNGARIAN

Stitch the flower at the neck in **Basketweave** using three strands of turquoise (1371) Needle Necessities floss. This forms a base for the button. Attach the button using two strands of matching floss.

Stitch the navy area on the left side of the bodice in **Basketweave** using dark blue (101) Silk & Ivory. Stitch each of the stripes in **Straight Gobelin**, Figure 22, next page, using light violet (117) Silk & Ivory for the violet stripe, six strands of red (S821)

©2007 Napa Needlepoint (<http://www.napaneedlepoint.com>). All rights reserved.

Three Ladies

NNS91 - 12

Splendor for the red stripe, six strands of turquoise (1371) Needle Necessities overdyed floss for the turquoise stripe, and light orange (138) Silk & Ivory for the orange stripe. Depending on the width of the stripe, these stitches may go over one to five threads. All sizes are shown on the figure. Always begin all stitches on the same side of the stitch (top or bottom) to ensure even tension and good coverage.

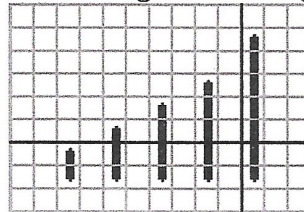


FIGURE 22: STRAIGHT GOBELINS

Straight stitches, like this one, need more thread to cover completely, so more strands of silk and floss are used.

Stitch the turquoise skirt in **Criss-Cross Hungarian with Crosses**, Figure 23, below, using four strands of turquoise (1371) Needle Necessities overdyed floss. Stitch the Hungarians first, then fill in the Cross Stitches with the same thread.

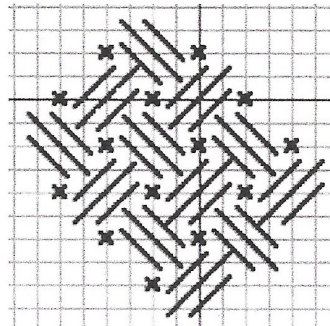


FIGURE 23: CRISS-CROSS HUNGARIAN WITH CROSSES

Stitch the navy dots on the skirt in **Double Leviathan**, Figure 24, using dark blue (101) Silk & Ivory. Your needle comes out of the canvas at the odd numbers and into the canvas at the even numbers.

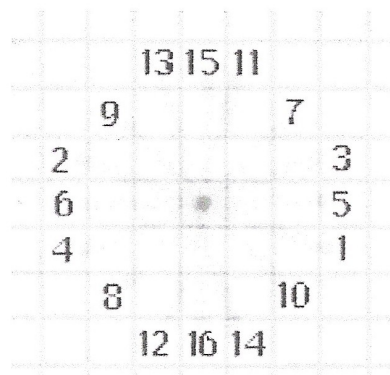


FIGURE 24: DOUBLE LEVIATHAN

ANGEL

Stitch the face in **Basketweave**, as painted, using four strands of flesh (754) or dark flesh (951) floss. Stitch the eyes in **Needlepoint Cross Stitch**, Figure 3, page 3, using a scrap of blue floss or metallic from your stash. Stitch the mouth in **Needlepoint Cross Stitch**, Figure 3, page 3, using four strands of red Splendor (S821).

Stitch the hands in **Basketweave** using four strands of flesh (754) floss.

Stitch the hair in **Basketweave** using one strand of light auburn (832) Persian wool.

Stitch the halo and wings in **Needlepoint Cross Stitch**, Figure 3, page 3, using orange (152V) Kreinik Tapestry (#12) braid.

Stitch the red collar of the dress in **Basketweave** using red (003) Kreinik Tapestry (#12) braid. Stitch the violet details of the dress (except for the hem) in **Basketweave** using light violet (117) Silk & Ivory. Stitch the yellow dress in **Dotted Swiss**, Figure 25, below, using the yellow (290) #5 pearl cotton. Dotted Swiss is an easy stitch to make. Stitch **Basketweave**, except cross every other stitch of every fourth row. In a stitch with directional light, like pearl cotton, this stitch is particularly lovely. Stitch the violet detail on the hem in **Needlepoint Cross Stitch**, Figure 3, page 3, using violet (117) Silk & Ivory.

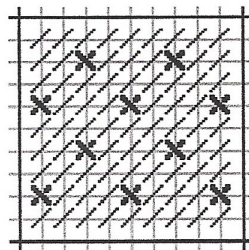


FIGURE 25: DOTTED SWISS

Stitch the blue aura around the angel in **Baby Alisha**, Figure 26. using dark blue (018HL) Kreinik Tapestry (#12) braid.

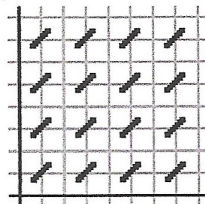


FIGURE 26: BABY ALISHA

BACKGROUND

Stitch the background in T Stitch, Figure 27 using yellow (290) #5 pearl cotton.

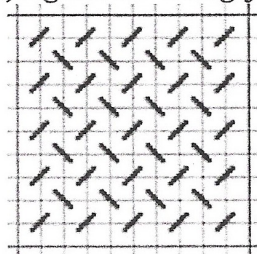


FIGURE 27: T STITCH

ACKNOWLEDGMENTS

My