



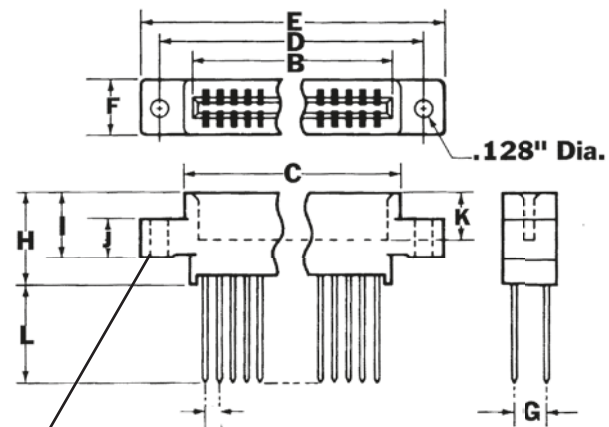
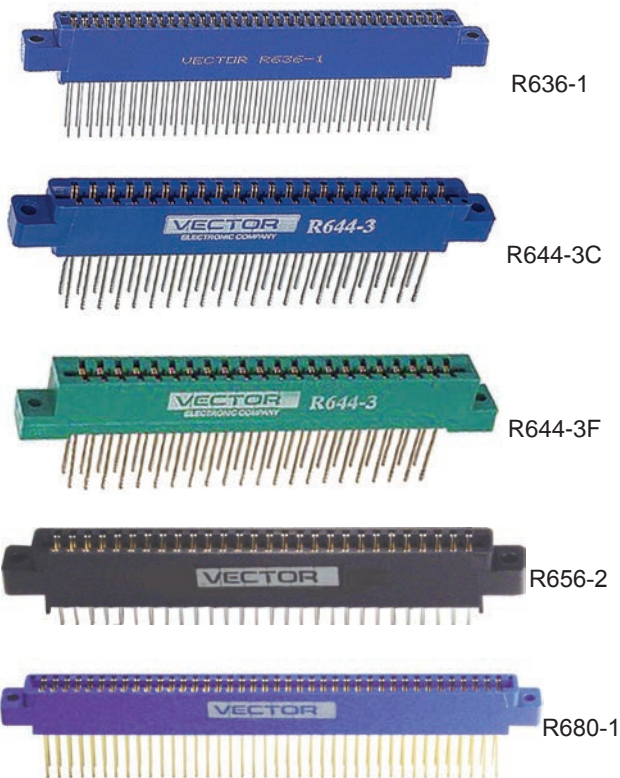
# PCB Accessories

## R600 Edge Connectors



This section contains parts and accessories for Vectorbord products. They are useful for board-level prototyping and breadboarding. Prototypes are created in various ways; by computer design or by hand - but with one thing in common: sooner or later, you have to make a physical board. It is at this stage that Vectorbord and these parts and accessories may be useful to you. They are selected for convenience and utility and they are readily available from your Vector distributors.

# Style 1



(Dimension table next page)  
Centermount

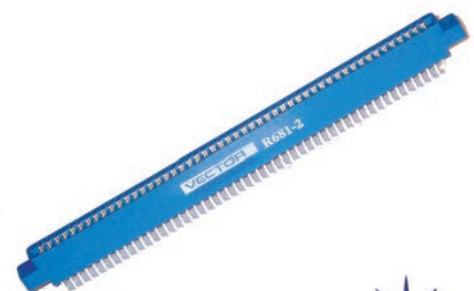
- Wire-Wrap .025" Sq. Posts
- Allows 3 level wraps
- Center Mount
- Use 28 to 32 AWG wire
- STD bus

Connectors

### Specifications

|  |                                    |
|--|------------------------------------|
| <b>Solder Type Insulator Material:</b> | PBT, PPS OR PA9T, UL94V-0          |
| <b>Wire-Wrap Type Insulator:</b>       | PBT, PPS OR PA9T, UL94V-0          |
| <b>Contact Material:</b>               | Phosphor bronze QQ-B-750           |
| <b>Contact Plating:</b>                | .000010" gold over .000050" nickel |
| <b>Test Voltage:</b>                   | 650 VAC                            |
| <b>Rated Current:</b>                  | 3 AMPS                             |
| <b>Contact Res. Drop:</b>              | 30 mV Max. @ rated current         |
| <b>Insulation Resistance:</b>          | 5000 megohms nominal @ 500 VDC     |
| <b>Operating Temperature:</b>          | -65 to +105 degrees C              |

Mating Cycles : Gold begins to degrade after 250 mating cycles

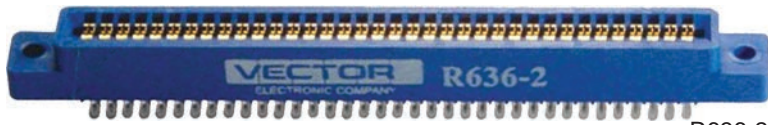




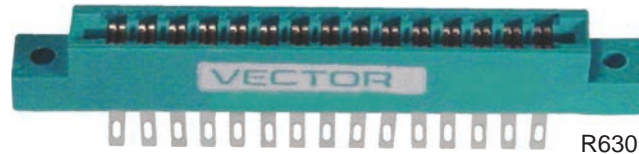
# PCB Accessories

## R600 Edge Connectors

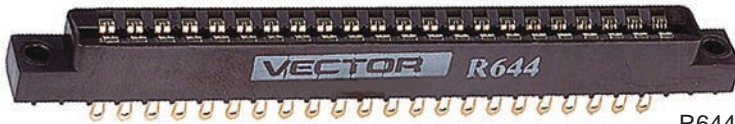
### Style 2



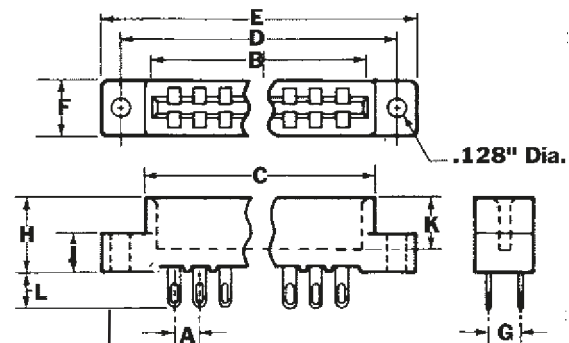
R636-2



R630



R644



R656-1

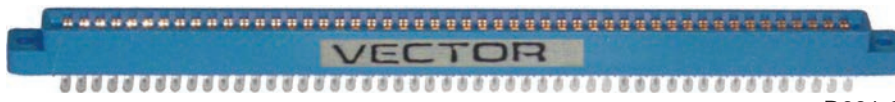
Flushmount



R680-2



R681



R681-3

- Solder tail (with eyelet) R656-1 Solder
- Solder eyelet type
- Flush Mount

Connectors

### Ordering Information



| Part No. | No. of Contacts | Termination Type | Mounting Ears | Style # | A     | B      | C     | D      | E      | F    | G     | H    | I    | J    | K     | L    |
|----------|-----------------|------------------|---------------|---------|-------|--------|-------|--------|--------|------|-------|------|------|------|-------|------|
| R630     | 30              | Solder Tail      | Flush         | 2       | .156" | 2.504" | 2.65" | 2.938" | 3.270" | .41" | .200" | .47" | n/a  | .25" | .34"  | .25" |
| R636-1   | 72              | Wire-Wrap        | Center        | 1       | .100" | 3.707" | 3.88" | 4.175" | 4.475" | .41" | .200" | .62" | .55" | .25" | .34"  | .65" |
| R636-2   | 72              | Solder Tail      | Flush         | 2       | .100" | 3.707" | 3.88" | 4.175" | 4.475" | .41" | .200" | .47" | n/a  | .25" | .34"  | .25" |
| R644     | 44              | Solder Tail      | Flush         | 2       | .156" | 3.596" | 3.75" | 4.032" | 4.360" | .41" | .200" | .47" | .25" | .25" | .265" | .25" |
| R644-2   | 44              | Wire-Wrap        | Center        | 1       | .100" | 2.300" | 2.55" | 2.850" | 3.120" | .41" | .200" | .62" | .55" | .25" | .297" | .65" |
| R644-3C  | 44              | Wire-Wrap        | Center        | 1       | .156" | 3.596" | 3.75" | 4.032" | 4.360" | .41" | .200" | .62" | .55" | .25" | .384" | .65" |
| R644-3F  | 44              | Wire-Wrap        | Flush         | 1       | .156" | 3.596" | 3.75" | 4.032" | 4.360" | .41" | .200" | .62" | .55" | .25" | .384" | .65" |
| R656-1   | 56              | Solder Tail      | Flush         | 2       | .125" | 3.625" | 3.79" | 4.045" | 4.336" | .41" | .200" | .47" | n/a  | .25" | .34"  | .25" |
| R656-2   | 56              | Wire-Wrap        | Center        | 1       | .125" | 3.625" | 3.79" | 4.045" | 4.325" | .41" | .250" | .62" | .55" | .25" | .34"  | .22" |
| R680-1   | 80              | Wire-Wrap        | Center        | 1       | .125" | 5.125" | 5.29" | 5.545" | 5.805" | .41" | .250" | .62" | .55" | .25" | .34"  | .65" |
| R680-2   | 80              | Solder Tail      | Center        | 2       | .125" | 5.125" | 5.29" | 5.545" | 5.805" | .41" | .200" | .62" | .55" | .25" | .34"  | .65" |
| R681-2   | 100             | Wire-Wrap        | Center        | 1       | .125" | 6.375" | 6.54" | 6.795" | 7.065" | .41" | .250" | .47" | .55" | .25" | .34"  | .22" |
| R681-3   | 100             | Solder Tail      | Center        | 2       | .125" | 6.375" | 6.54" | 6.795" | 7.065" | .41" | .200" | .47" | n/a  | .25" | .34"  | .25" |

Specification subject to change without notice

