



## BRIGGS LAKE CHAIN ASSOCIATION

*2006 Lake Association of the Year*

# 2013 Conservation Project Workshop

## S horeland E ducation R estoration P roject

A Minnesota DNR Shoreland Habitat Program

and

## H ealthy L akes M ini - G rants

A Briggs Lake Chain Association Conservation Program



Gene and Barb Graff— Elk 2008



Sue Golding — Julia — 2009



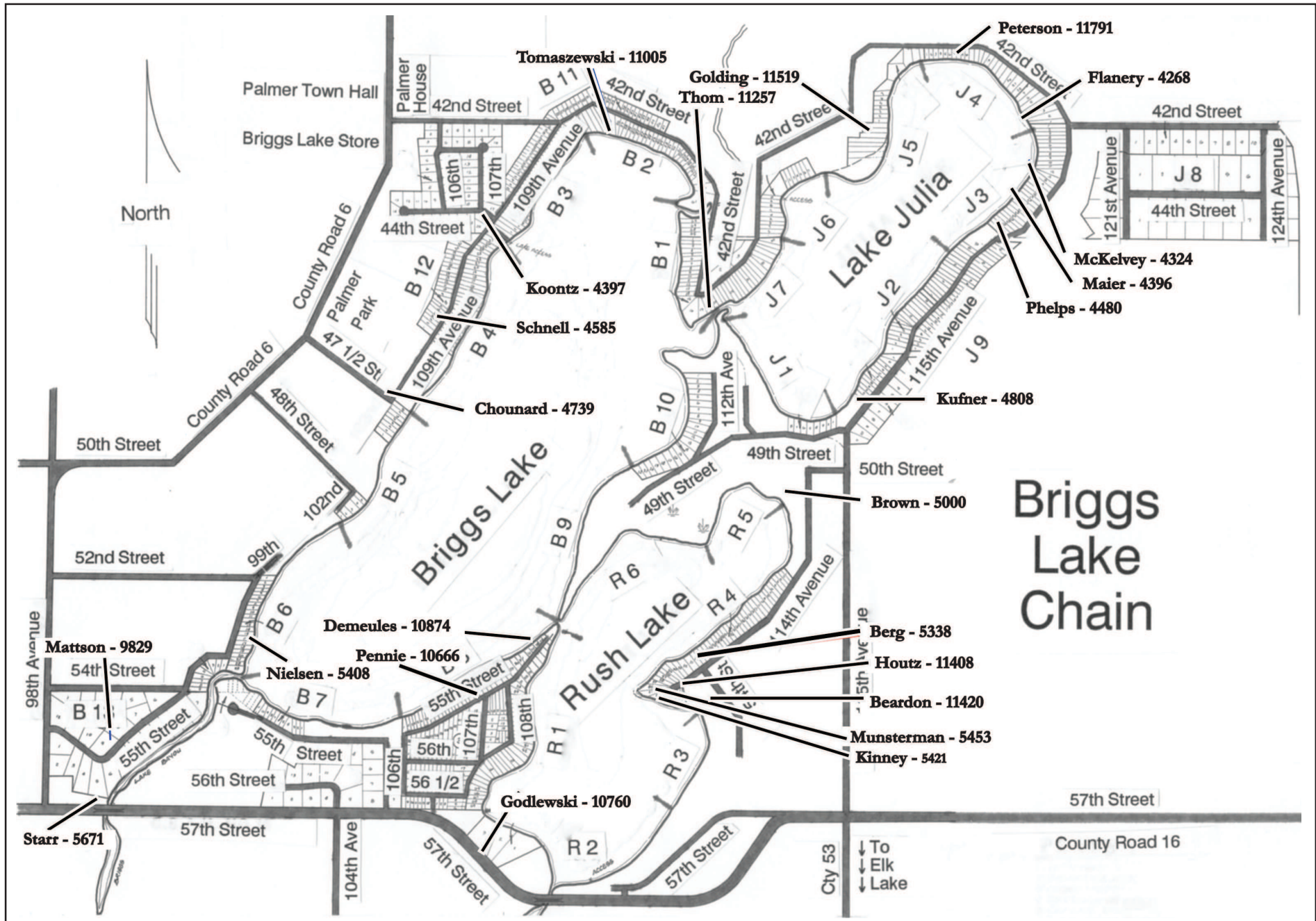
Jack and Carol Kufner - Julia 2009



Mike Flanery — Julia — 2009

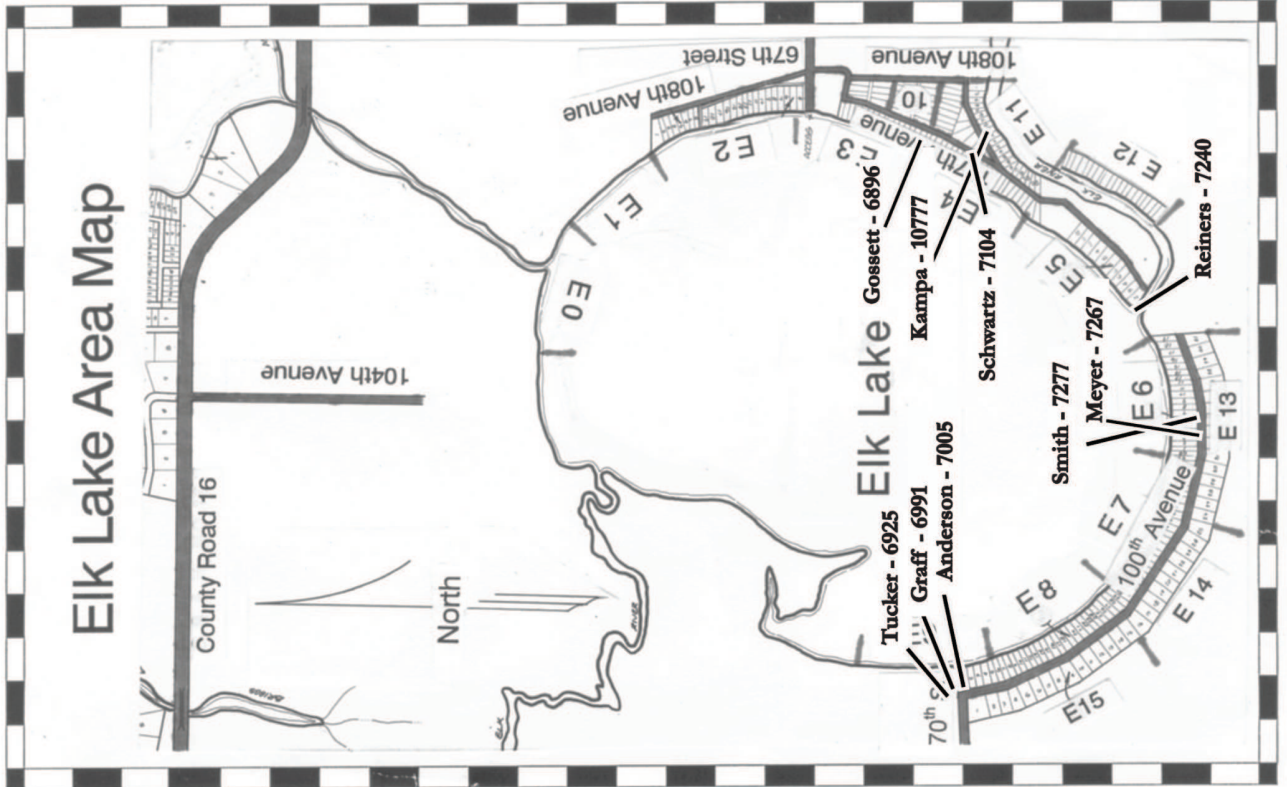
# BLCA Conservation Projects

2003 - 2012



# BICA Conservation Projects

2003 - 2012



## RUSH LAKE

Wait and Adelle Munsterman	5453 114th Ave.	shoreland restoration	2003
Doug and Susie Brown	5000 114th Ave.	shoreland restoration	2006
Stan and Nancy Berg	5338 114th Ave.	raingarden	2007
Kelly and Bruce Kinney	5421 114th Ave.	shoreland restoration	2012
Thomas Godlewski	10760 57th St.	conservation project	
Penny Houtz and Doug Seiler	11408 114th Ave.	conservation project	
Paul and Janet Beardon	11420 54th Ave.	conservation project	

## LAKE JULIA

Kenzie and Mary Ann Phelps	4480 115th Ave.	shoreland restoration	2005
Pat and Randy Peterson	11791 42nd St.	shoreland restoration	2006
Sue and Terry Golding	11519 42nd St.	shoreland restoration	2009
Mike Flanery	4268 115th Ave.	shoreland restoration	2009
Jack and Carol Kufner	4808 115th Ave.	shoreland restoration	2009
Ruth and Brad Thom	11257 42nd St.	shoreland restoration	2012
Marcella Maier	4396 115th Ave.	conservation project	
Jack and McKelvey	4324 115th Ave.	conservation project	

## BRIGGS LAKE

Tom and Marilyn Koontz	4397 109th Ave.	shoreland restoration	2005
John and Laura Schnell	4585 109th Ave.	shoreland restoration	2006
Jeff and Jane Chounard	4379 109th Ave.	shoreland restoration	2007
Duncan and Kelly Pennie	10666 55th St.	shoreland restoration	2011
Karen and Mac Nielsen	5408 100th Ave.	shoreland restoration	2011
Cam and Kim Mattson	9829 55th St.	conservation project	
Starr	5671 55th St.	conservation project	
Steve and Virginia Demeules	10874 55th St.	conservation project	
Matt and Robin Tomaszewski	11005 42nd St.	conservation project	

## BIG ELK LAKE

Darrell and Barb Tucker	6925 100th Ave	shoreland restoration	2004
Darrell and Barb Tucker	6925 100th Ave	raingarden	2005
Darrell and Barb Tucker	6925 100th Ave	dry creek bed	2007
Darrell and Barb Tucker	6925 100th Ave	run-off dicertment	2007
Gary and Judith Anderson	7005 100th Ave.	shoreland restoration	2007
Gene and Barb Graff	6991 100th Ave.	shoreland restoration	2008
Ken and Anne Gossett	6896 107th Ave.	shoreland restoration	2011
Wayne Smith	7277 100th Ave	shoreland restoration	2012
Greg and Paula Kampa	10777 70th Ave.	shoreland restoration	2012
Paul and Laurian Reiners	7240 107th Ave.	conservation project	
Larry and Nancy Meyer	7267 100th Ave.	conservation project	
Terry and Cindy Schwartz	7104 107th Ave.	conservation project	



## BRIGGS LAKE CHAIN ASSOCIATION

*2006 Lake Association of the Year*

# 2013 Shoreland Education Restoration Project

## ***Workshop Agenda***

***April 20, 2013***

**8:30**      **Refreshments**

**8:45**      **Welcome and introductions**

**Why are we here?**

Barb Tucker BLCA Healthy Lakes Committee

John Schnell BLCA Healthy Lakes Committee

**9:15**      **Basics of Lakeshore Restoration and Lessons from Previous Projects**

Tiffany Determann Sherburne Soil and Water Conservation District

Previous BLCA project recipients

**10:30**      **Break**

**10:45**      **Basics of Lakeshore Restoration [continued]**

**11:15**      **Financial Assistance**

***What's available and how you get it***

Kenzie Phelps, BLCA Healthy Lakes Committee

**11:45**      **Questions???**

*and Expectations*

**12:00**      **Adjourn**



BRIGGS LAKE CHAIN ASSOCIATION  
2006 Minnesota Lake Association of the Year

Conservation Projects Workshop  
April 20, 2013

WHY ARE WE HERE TODAY?

1. Learn about the benefits of shoreland restoration and other conservation efforts
2. Learn how the Overfly Project and conservations efforts are connected
3. Learn the basics of doing a conservation project:  
*Shoreland buffers*  
*Rain gardens*  
*Runoff diversion*
4. Introduce SERP II [Shoreland Education Restoration Project], Healthy Lakes Mini Grants, SWCD Funds
5. Learn how to get grant money
6. Plan a clear next step

News Release  
For Immediate Release  
April 11, 2013

## Briggs Lake Chain Association Continues Conservation Programs

PALMER TOWNSHIP-- Briggs Lake Chain property owners will benefit again this year from funds provided to the lake association for shoreland restoration and other conservation projects, thanks to support from the Minnesota Department of Natural Resources Shoreland Habitat Program, Sherburne Soil and Water Conservation District and the BLCA.

With the Briggs Lake Chain [Big Elk, Briggs, Rush and Julia] and the Elk River still on Minnesota's "impaired waters" list, the Briggs Lake Chain Association [BLCA] has increased its focus on shoreland restoration and other conservation projects. The lake association's ongoing Flyover Project has also highlighted the clear need for property owners to do their part in improving water quality. The Briggs Lake Chain Association will administer funds from the DNR, SWCD and BLCA to property owners and provide education and assistance to establish these conservation projects.

"We now have good data about the causes of poor water quality, and several sources of funds to assist property owners to do their part to protect and improve the lakes," BLCA president Dan Merchant said. "We all have the responsibility to do what we can to deal with poor water quality. What we do now has a big impact on the future of the lake chain. We must act wisely for our current lake users, as well for our children and their children. We know what to, but it takes everybody's participation"

The BLCA, with assistance from the Sherburne Soil and Conservation District and MN DNR, has over the past several years helped fund and establish over 20 restoration and rain garden projects. The SERP [Shoreland Education and Restoration Project] grant extends through June 2013. As part of SERP, the BLCA is holding an introduction and planning workshop for interested property owners on April 20. The workshop is free, and will be held at the Palmer Town Hall from 8:30 AM to noon. At the conclusion of the workshop property owners will know how to start their projects and have a clear next step. BLCA members who have already established restoration projects will provide technical assistance and labor for each new project.

### **About the Briggs Lake Chain Association**

The BLCA is an active, volunteer lake association made up of residents on Big Elk Lake, Briggs Lake, Lake Julia, and Rush Lake. In existence for over 50 years, the BLCA has been a steward for the care and improvement of the chain of lakes. In 2006 MN Waters recognized the BLCA as the "Lake Association of the Year" for all of Minnesota. In addition to shoreland restoration, the association also has ongoing programs to monitor water quality, manage curly leaf pondweed [an invasive aquatic species known for aggressively clogging lake waters], and address septic and other runoff problems identified in the Flyover Project.

### **Contacts:**

Dan Merchant, BLCA President

[smerchant@frontiernet.net](mailto:smerchant@frontiernet.net)

Kenzie Phelps, BLCA Healthy Lakes Committee

[kenziephelps@gmail.com](mailto:kenziephelps@gmail.com)

*BLCA*

---



---

**Briggs Lake Chain Association**

# *BLCA*

---



## **The Flyover Process**



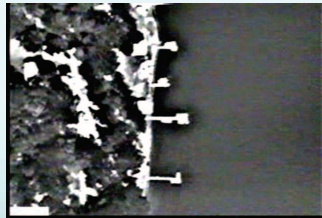
**The Flyover study is a step in the process of turning around the water quality in our chain of lakes.**

- Healthy Lakes Committee recognized the flyover could be an effective way to assess the role of individual property owners in the decline of our lake quality
- Problems on individual properties could be identified so they can be fixed
- The BLCA sponsored and planned the A. W. Research Laboratories, Inc. (AWRL) Flyover study, with financial assistance from Sherburne County and Palmer Township

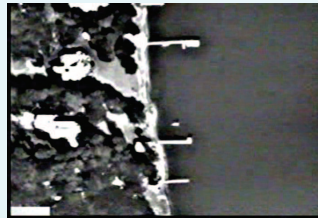




### Example Report



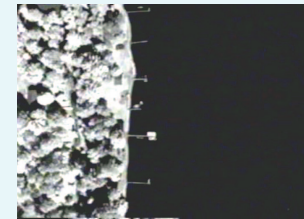
Thermal



Thermal



Visible



Hyperspectral IR



Hyperspectral WP

#### Influence on Lake

Map Position	Septic Point Source	Septic Non-point Source	Runoff Point Source	Runoff Non-point Source	Toxic Point Source	Toxic Non-point Source
14.1		X		X		
14.2		X		X		
14.3		X		X		

#### Ordinance Non-conformity

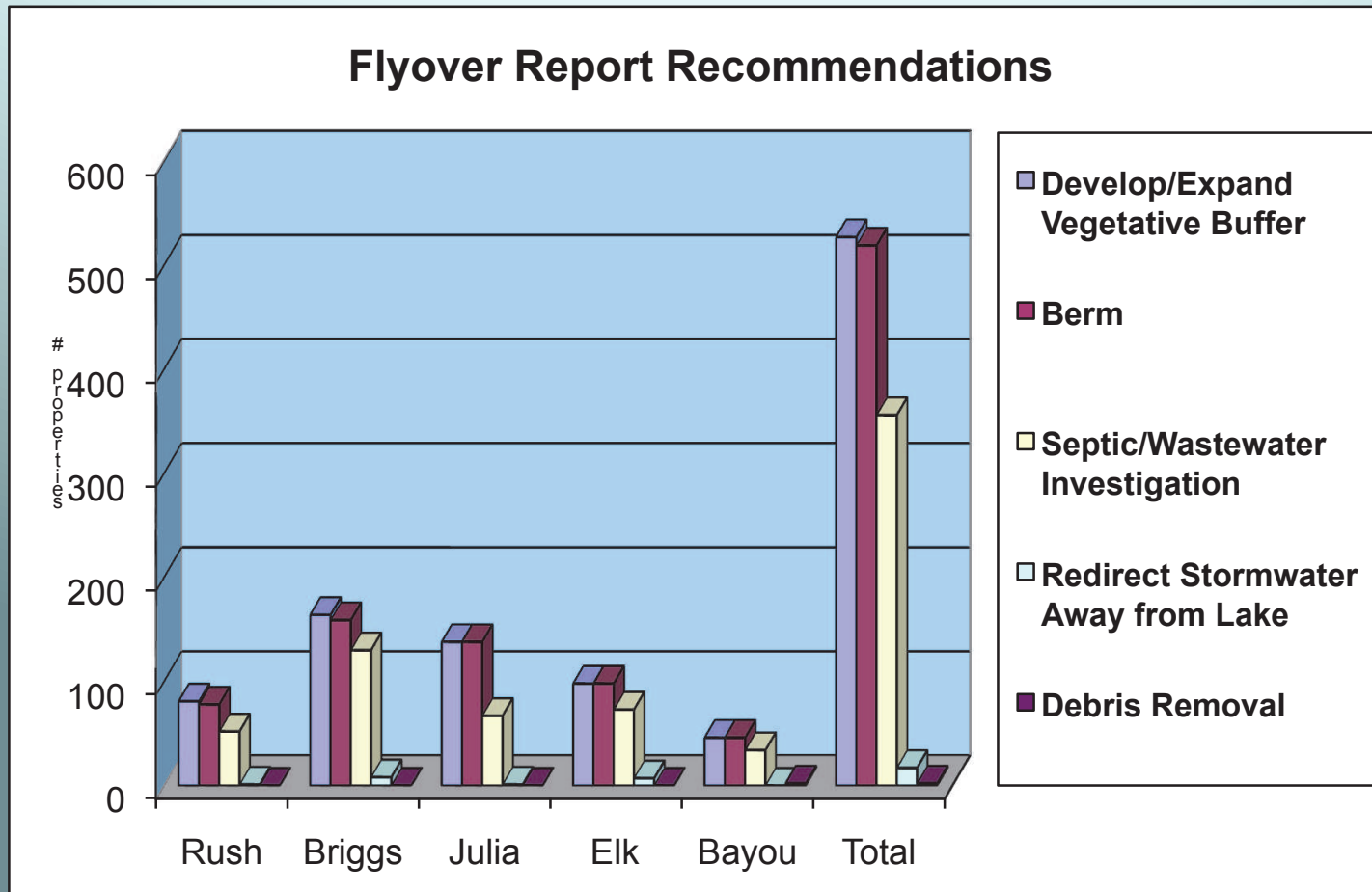
Map Position	Lake Setback	Percent Impervious	Lot Line Setback	Fill/Dredge in Lake bed	Vegetative Buffer less than 100 feet	Other
14.1	X				X	
14.2	X				X	
14.3	X				X	

#### Recommendations

Map Position	Septic/Wastewater Investigations	Develop/Expand Vegetative Buffer	Berm	Redirect Stormwater away from lake	Debris Removal
14.1	X	X			
14.2	X	X			
14.3	X	X			



## Flyover Report Recommendations

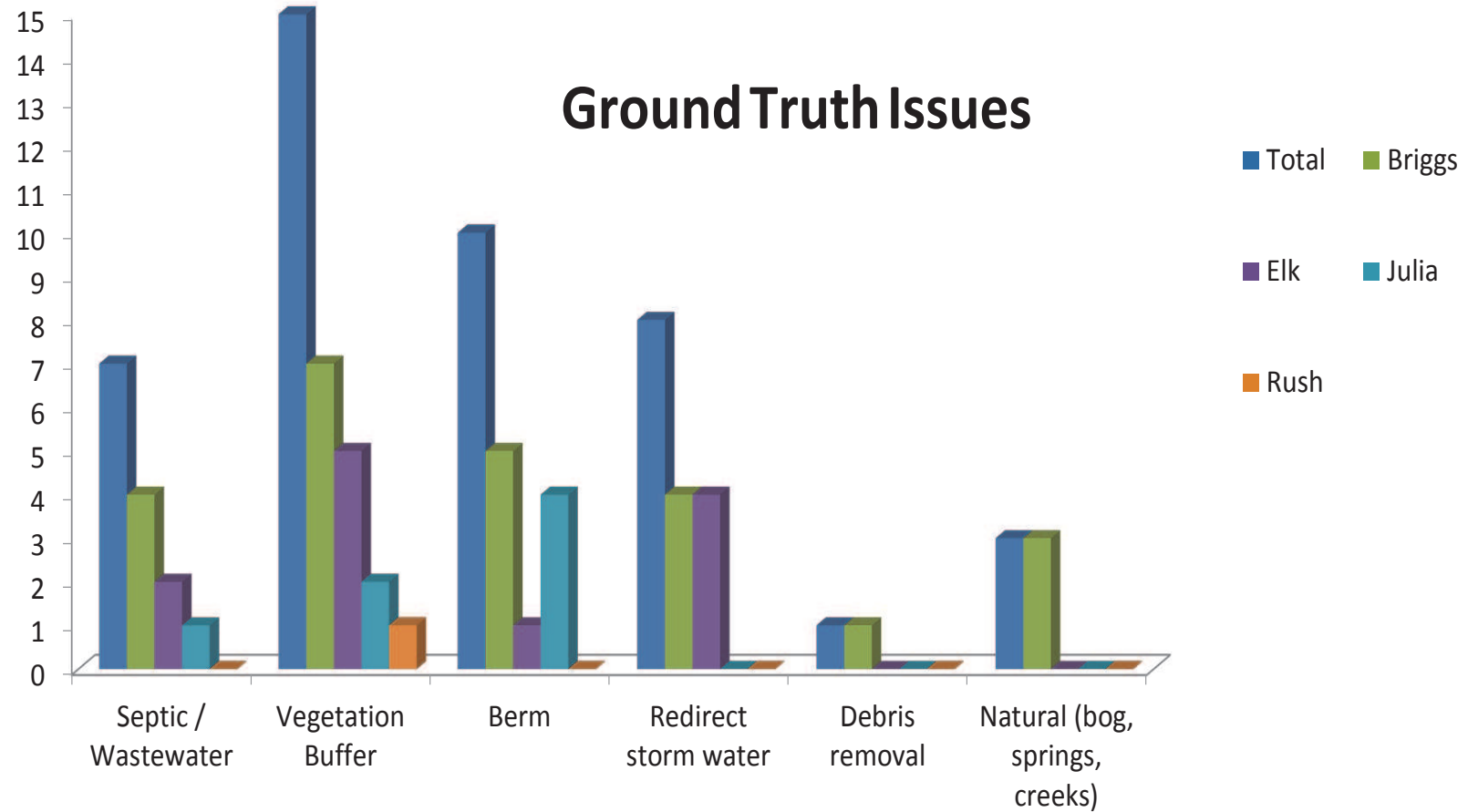




## Groundtruthing

- Nobody's property on our lakes is perfect
- HLC volunteers will need to be trained by AWRL
- HLC volunteers hope to look at properties with the owners' cooperation and together examine the property for potential problems, and determine if there is a problem, the extent and source of the problem
- Implementation of the Recommendation and the "Notes" part of the analysis for these confirmed problems is CRUCIAL to getting the full value of the flyover study. Groundtruthing is essentially an on-site validation of concerns identified in the examination of the aerial images. It involves an on-site consultation with a trained volunteer and a validation of the data for that site.
- A HLC priority is to groundtruth the properties of the HLC members first then people who volunteer/sign up

## Ground Truth Issues





## **Property Owners Mission**

- Use the AWRL report and groundtruthing to validate point and non-point sources of nutrients destined for the lake
- Prioritize actions to minimize the adverse impacts of the pollution
- Successful efforts will help in attaining the ultimate goal of improved water quality, along with cleaner and healthier environment for everyone to enjoy