

**Mouse Anti-CD269/BCMA [BCMA/2366]: MC0261, MC0261RTU7**

**Intended Use:** For Research Use Only

**Description:** The B cell maturation protein (BCMA) is a type I integral membrane protein that belongs to the tumor necrosis factor receptor (TNF-R) superfamily. It is expressed as a 184 amino acid peptide that is expressed only in mature B-lymphocytes and is located on the cis part of the Golgi apparatus. BCMA shares significant homology with TACI (transmembrane activator) within the cysteine-rich domain. TACI has been shown to bind CAML, which induces activation of NFAT (nuclear factor of activated T cells). Both BCMA and TACI have been shown to bind APRIL and TALL-1, which stimulate B cell proliferation in conjunction with other B-cell activators. When overexpressed, TALL-1 stimulates the development of systemic lupus erythaematosus (SLE).

**Specifications**

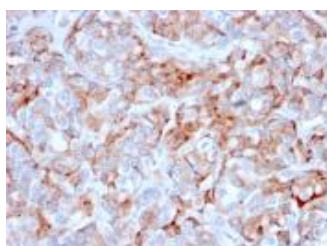
Clone: BCMA/2366  
 Source: Mouse  
 Isotype: IgG2c/k  
 Reactivity: Human  
 Localization: Membrane  
 Formulation: Antibody in PBS pH7.4, containing BSA and ≤ 0.09% sodium azide (NaN3)  
 Storage: Store at 2°- 8°C  
 Applications: IHC, ELISA  
 Package:

| Description             | Catalog No. | Size |
|-------------------------|-------------|------|
| CD269/BCMA Concentrated | MC0261      | 1 ml |
| CD269/BCMA Prediluted   | MC0261RTU7  | 7 ml |

**IHC Procedure\*:**

Positive Control: Gastric carcinoma, tonsil, NAMALWA cells  
 Concentrated Dilution: 50-200  
 Pretreatment: Citrate pH6.0 or EDTA pH8.0, 15 minutes using Pressure Cooker, or 30-60 minutes using water bath at 95°-99°C  
 Incubation Time and Temp: 30-60 minutes @ RT  
 Detection: Refer to the detection system manual

\* Result should be confirmed by an established diagnostic procedure.



FFPE human gastric carcinoma stained with anti-CD269 using DAB

**References:**

1. TNF superfamily member APRIL enhances midbrain dopaminergic axon growth and contributes to the nigrostriatal projection in vivo. McWilliams TG, et al. *Exp Neurol* 298:97-103, 2017.
2. APRIL, BCMA and TACI proteins are abnormally expressed in non-small cell lung cancer. Dou H, et al. *Oncol Lett* 12:3351-3355, 2016.
3. Selective regulation of axonal growth from developing hippocampal neurons by tumor necrosis factor superfamily member APRIL. Osório C, et al. *Mol Cell Neurosci* 59:24-36, 2014.

Doc. 100-MC0261  
Rev. A