



---

## DTduino

### General Overview:

The DTduino is a development board with a bit of a twist, The DTduino is based around a PIC18F45K22 pic micro controller.

The DTduino was developed to accept majority Arduino shields and MikroElektronika Click Boards on the Micro Bus.

The DTduino ships with a Day-Tec bootloader which works with any IDE that can produce a .HEX file for the specific Pic18.

The Day-Tec bootloader and IDE can be downloaded from our website [www.day-tec.com](http://www.day-tec.com)

### General Specifications:

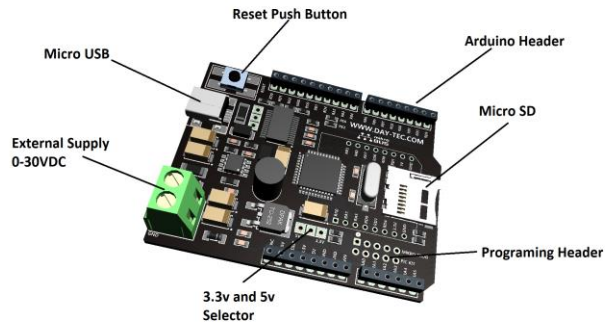
1. Supply input voltage: 10-30vdc.
2. Supply input current: 40ma.
3. USB supply: DTduino can be powered by the USB
4. USB supply Protection: Onboard 1A fuse
5. Crystal: 8 MHz
6. Display: 232 communication LED's x 2
7. Display: 2 x General purpose LED's (RE0 and RE5)
8. USB Interface: FT232RL
9. Programming ICSP: Pic Kit and MikroProg header.
10. On board Memory: Micro SD card Slot
11. MicroBus Voltage: Selectable 5V or 3.3V

### General Operation:

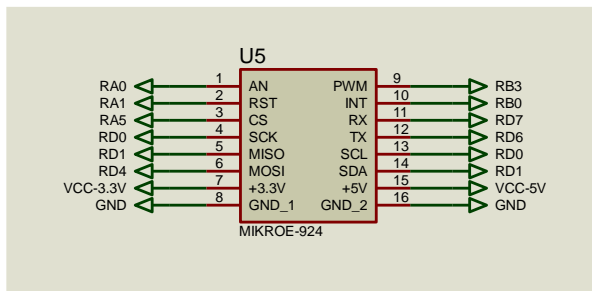
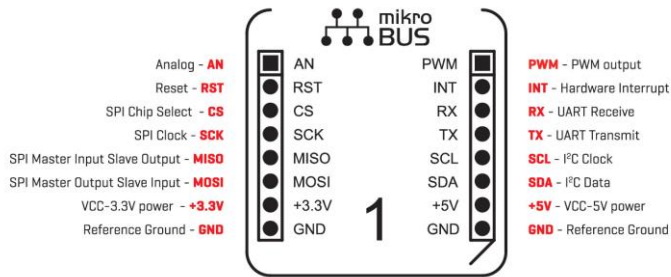
Please contact us for any further detail, schematics and drawings if required.

# Pin Out:

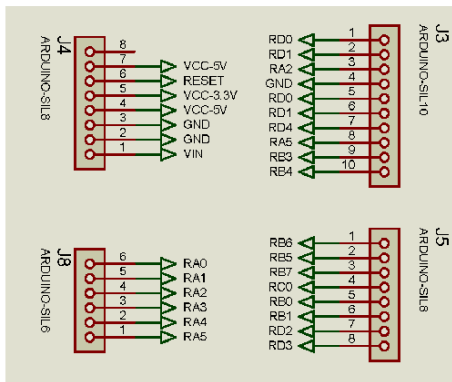
General pin out:



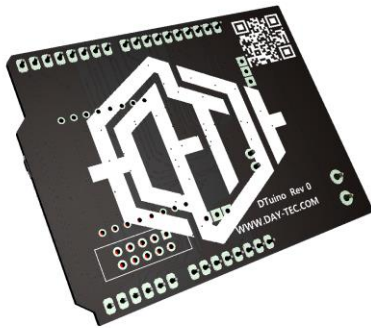
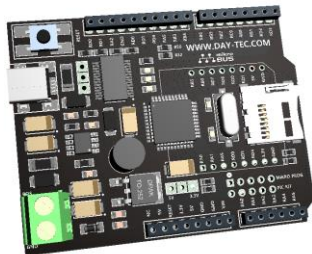
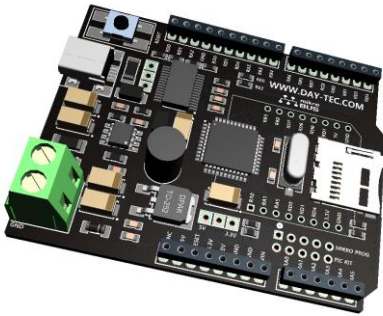
Pin outs for MikroBus:



Pin outs for Arduino shields:



## General Layout of PCB:



Contact us:

For further details or requirements please contact us at [Info@day-tec.com](mailto:Info@day-tec.com)

Email: [info@day-tec.com](mailto:info@day-tec.com)

Web: [www.day-tec.com](http://www.day-tec.com)

Page: 3 of 3