

Mouse Anti-Wilm's Tumor (WT1) [6F-H2]: MC0361, MC0361RTU7

Intended Use: For Research Use Only

Description: Recognizes a 47-55kDa-tumor suppressor protein, identified as Wilm's Tumor (WT1) protein. The antibody reacts with all isoforms of the full-length WT1 and also identifies WT1 lacking exon 2-encoded amino acids, frequently found in subsets of sporadic Wilm's tumor, a sporadic and familial pediatric kidney tumor, is genetically heterogeneous. Wilm's tumor is associated with mutations of WT1, a zinc-finger transcription factor that is essential for the development of the metanephric kidney and the urogenital system. The WT1 gene is normally expressed in fetal kidney and mesothelium, and its expression has been suggested as a marker for Wilm's tumor and mesothelioma. WT1 protein has been identified in proliferative mesothelial cells, malignant mesothelioma, ovarian carcinoma, gonadoblastoma, nephroblastoma, and desmoplastic small round cell tumor. Lung adenocarcinomas rarely stain positive with this antibody. WT1 protein expression in mesothelial cells has become a reliable marker for the diagnosis of mesotheliomas.

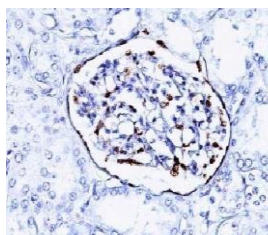
Specifications

Clone: 6F-H2
 Source: Mouse
 Isotype: IgG1k
 Reactivity: Human, mouse, rat
 Localization: Nucleus
 Formulation: Antibody in PBS pH7.4, containing BSA and ≤ 0.09% sodium azide (NaN₃)
 Storage: Store at 2°- 8°C
 Applications: IHC, Flow Cyt., ICC/IF
 Package:

Description	Catalog No.	Size
Wilm's Tumor (WT1) Concentrated	MC0361	1 ml
Wilm's Tumor (WT1) Prediluted	MC0361RTU7	7 ml

IHC Procedure

Positive Control Tissue: Mesothelioma
 Concentrated Dilution: 50-200
 Pretreatment: Citrate pH6.0, 15 minutes using Pressure Cooker, or 30-60 minutes using water bath at 95°-99°C
 Incubation Time and Temp: 30-60 minutes @ RT
 Detection: Refer to the detection system manual
 * Result should be confirmed by an established diagnostic procedure.



FFPE human fetal kidney stained with anti-WT1 using DAB

References:

- Overexpression and potential targeting of the oncofoetal antigen 5T4 in malignant pleural mesothelioma. Al-Taei S, et al. Lung Cancer. Aug;77(2):312-8, 2012. A Murine Model of K-RAS and β-Catenin Induced Renal Tumors Expresses High Levels of E2F1 and Resembles Human Wilms Tumor. Yi Y, et al. J Urol. Dec;194(6):1762-70, 2015.
- Immunohistochemical expression of GLUT1 and its correlation with unfavorable histology and TP53 codon 72 polymorphism in Wilms tumors. Rakheja D, et al. Pediatr Dev Pathol. 2012 Jul-Aug;15(4):286-92, 2012.
- Immunohistochemical detection of MDR proteins in Wilms' tumour. Hodorova I, et al. Bratisl Lek Listy. 2008;109(12):564-7.
- The expression of Wilms' tumour-1 and Ca125 in invasive micropapillary carcinoma of the breast. Lee AH, et al. Histopathology. Dec;51(6):824-8, 2007.

Doc. 100-MC0361
Rev. B