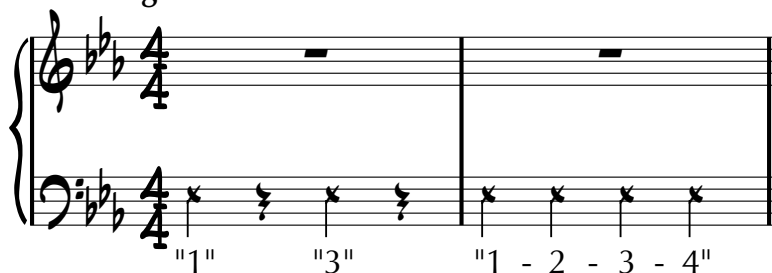


NMEA All State Jazz Audition ETUDE C1-BLUES

Play notated etude **as written**; chord symbols are provided only for harmonic reference.

Swing: M.M. ♩ = 120

COUNTOFF:



ETUDE

Main etude notation. The key signature is B-flat major (two flats). The time signature is 4/4. The notation shows a grand staff with a treble and bass clef. The etude is divided into three systems of four measures each. Chord symbols are provided above the staff for harmonic reference. The first system starts with a forte (f) dynamic. The second system includes a triplet of eighth notes in the bass line. The third system includes a triplet of eighth notes in the treble line. The etude concludes with a double bar line.

Chord symbols: Eb13, Ab13, Eb13, Bbm9, Eb7(b9), Ab13, Ab13, Ebmaj9, Fmi9, Gmi7, C7(b9), Fmi9, Bb13(b9), Eb13, C7(b9), Fmi9, Bb13(b9).

NMEA All State Jazz Audition **ETUDE C1** - Piano**IMPROVISE!**

First system of piano accompaniment for Etude C1. The first measure has an $E\flat 7$ chord. The second measure has an $A\flat 7$ chord. The third measure has an $E\flat 7$ chord. The fourth measure has a $B\flat m7$ chord and an $E\flat 7(b9)$ chord.

Second system of piano accompaniment for Etude C1. The first measure has an $A\flat 7$ chord. The second measure is empty. The third measure has an $E\flat Ma7$ chord and an $Fm7$ chord. The fourth measure has a $Gm7$ chord and a $C7(b9)$ chord.

Third system of piano accompaniment for Etude C1. The first measure has an $Fm7$ chord. The second measure has a $B\flat 7(b9)$ chord. The third measure has an $E\flat 7$ chord. The fourth measure has an $Fm7$ chord and a $B\flat 7(b9)$ chord.

COMP (you may use these chord voicings as a point of departure or use your own.)

Fourth system of piano accompaniment for Etude C1. The first measure has an $E\flat 13$ chord. The second measure has an $A\flat 13$ chord. The third measure has an $E\flat 13$ chord. The fourth measure has a $B\flat m9$ chord and an $E\flat 7(b9)$ chord.

Fifth system of piano accompaniment for Etude C1. The first measure has an $A\flat 13$ chord. The second measure is empty. The third measure has an $E\flat maj9$ chord and an $Fm9$ chord. The fourth measure has a $Gm7$ chord and a $C7(b9)$ chord.

Sixth system of piano accompaniment for Etude C1. The first measure has an $Fm9$ chord. The second measure has a $B\flat 13(b9)$ chord. The third measure has an $E\flat 13(b5)$ chord. The fourth measure is empty.