

25,000 sq.ft. For Lease

25201 Brest Rd. Taylor Mi. 48180



Listing ID:
 Status: Active
 Property Type: Industrial For Lease
 Industrial Type: Flex Space, Food Processing
 Contiguous Space: 25,000 SF
 Total Available: 25,000 SF
 Lease Rate:
 Lease Type:



Overview/Comments

25,000 sq.ft. of light industrial available with 2,900 sq.ft. of office and mezzanine, 2 truck wells and 2 grade level overhead doors.
 Call Rea Construction at 734-946-8730.

More Information Online

<https://www.rea-construction.net/>
 Virtual Tour <https://view.ricohtours.com/d34b602e-710b-41e4-9c26-84839e2a71e6>

General Information

Tax ID/APN:	263960770	Building Name:	25201
Industrial Type:	Flex Space, Food Processing, Industrial-Business Park, Manufacturing, Light Industrial, Self Storage, Warehouse/Distribution	Building/Unit Size (RSF):	25,000
		Usable Size (USF):	25,000
Zoning:		Land Area:	2 Acres

Available Space

Suite/Unit Number:	25201	Space Type:	Relet
Space Available:	25,000 SF	Date Available:	1/1/2021
Minimum Divisible:	25,000 SF	Lease Rate:	
Maximum Contiguous:	25,000 SF	Parking Spaces:	30

Area & Location

Property Located Between:	Beech Daly And Telegraph
Highway Access:	I94
Airports:	D.T.W.

Building Related

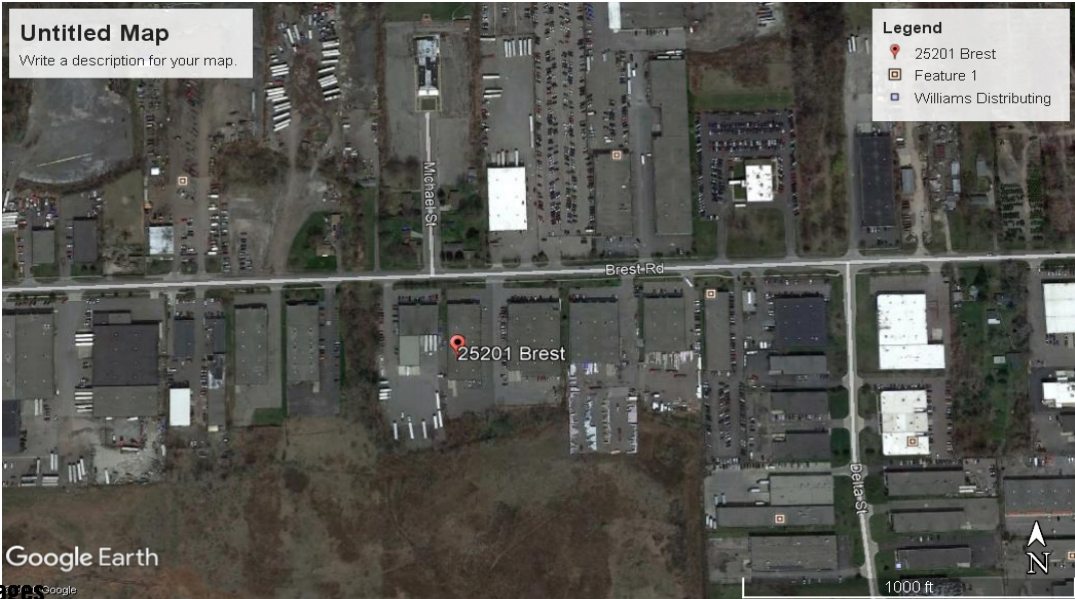
Tenancy:	Single Tenants	Passenger Elevators:	0
Total Number of Buildings:	1	Freight Elevators:	0
Number of Stories:	1	Sprinklers:	Wet
Property Condition:	Good	Amps:	200
Year Built:	1997	Volts:	240
Roof Type:	Flat	X-Phase:	3
Construction/Siding:	Block	Heat Type:	Natural Gas
Parking Type:	Surface	Lighting:	Metal Halide
Total Parking Spaces:	30	Internet Access:	Cable
Column Spacing:	40		

Land Related

Zoning Description: Heavy Industrial
Water Service: Municipal
Sewer Type: Municipal

Location

Address: 25201 Brest Rd. Taylor Mi. 48180 MSA: Detroit-Warren-Dearborn
County: Submarket: Airport District

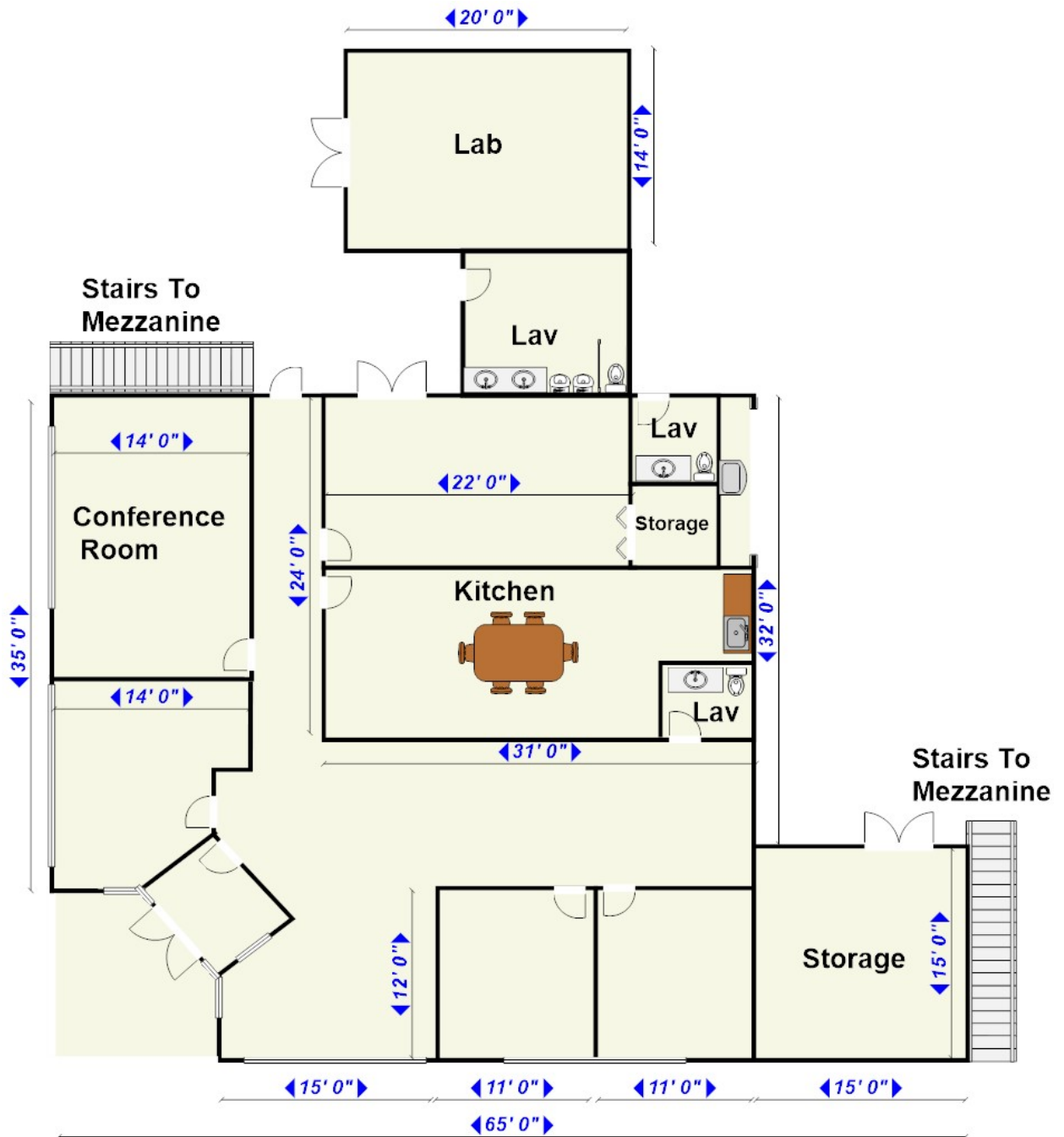


Property Images

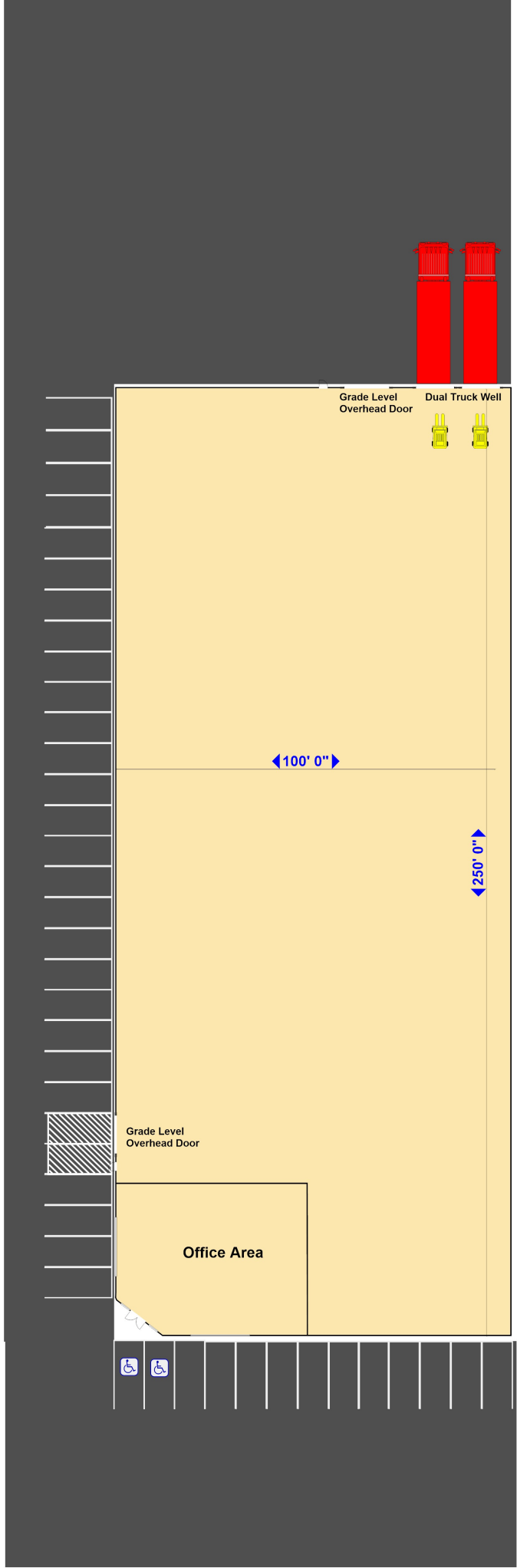


IMG_3975





25201 Brest Rd. Office Detail
2,900 sq.ft. With Mezzanine





Property Contacts



Rea Construction
Sal
734-946-8730