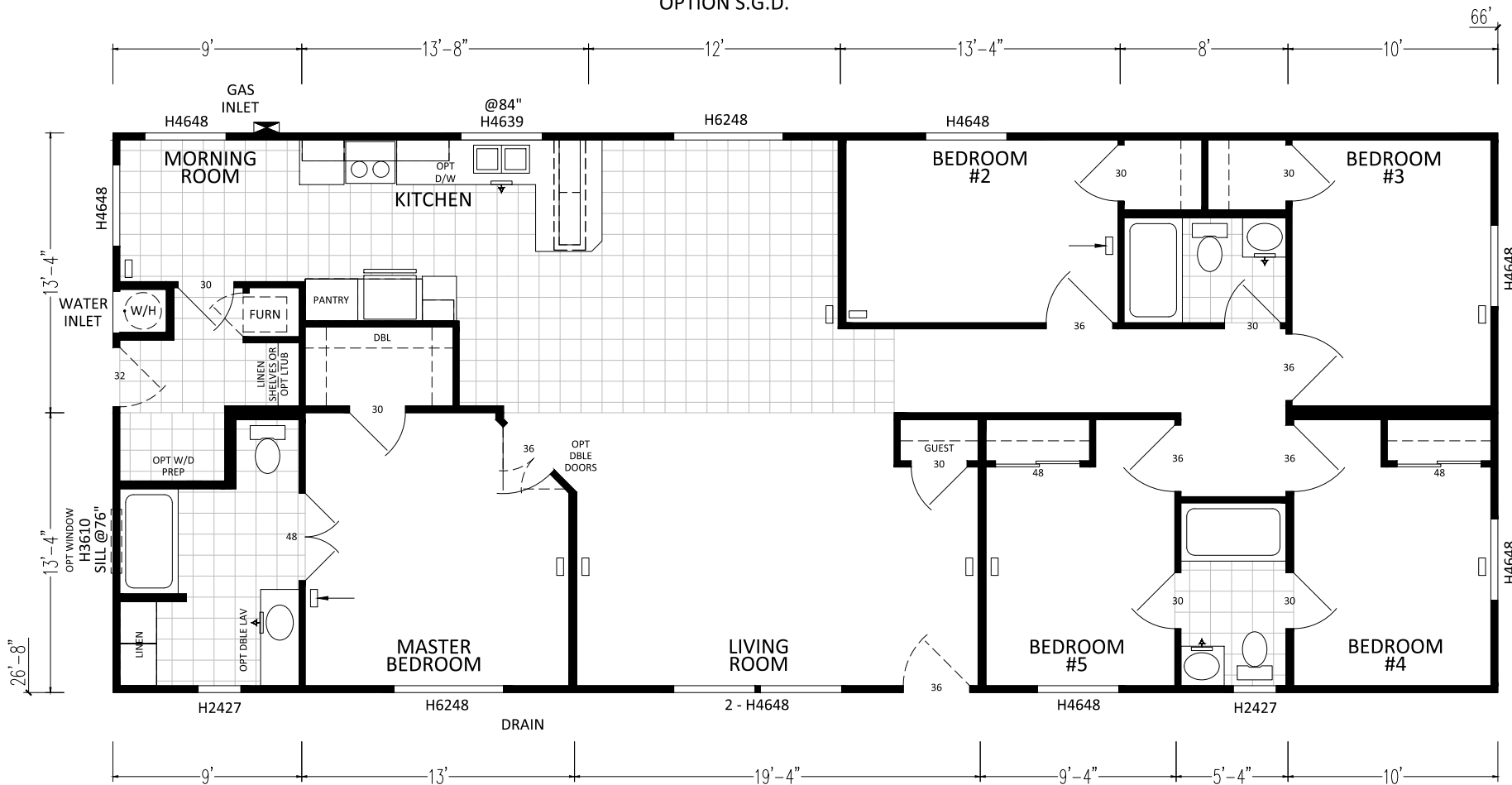


SHIP AS 16 WIDE

ROOM DIMENSIONS MAY CHANGE PER CONSTRUCTION PRINTS.

6' SGD
OPTION S.G.D.



K730CT 5BD - 3BA 6628 (1760 SQ. FT. LIVING)

SCALE: 1/8" = 1'-0"

CUSTOMER: ----



DIVISION 31, P.O. BOX 670
SAN JACINTO, CA 92581
(951) 654-9321

REVISIONS

	REVISION DATE:
	REVISION BY:

	REVISION DATE:
	REVISION BY:

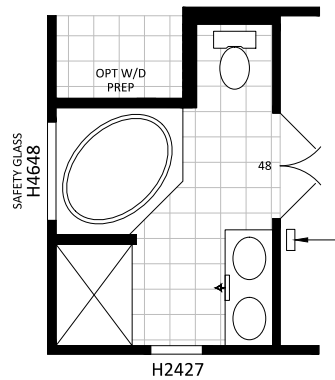
	DRAW DATE: 6-21-17
	DRAWN BY: DCS

	DRAWING TITLE: <i>SALES FLOOR PLAN</i> <i>6628-5BD-3BA</i>
--	--

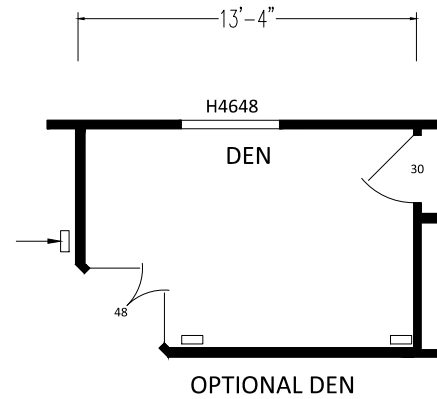
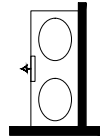
	MODEL NO. K730CT
--	----------------------------

	MODEL REV. A DAPIA REV. ----
--	--

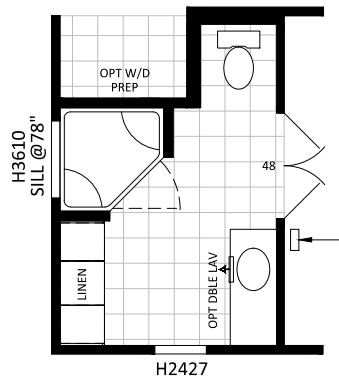
	SHEET NO. AL-101 REF NO. ----
--	---



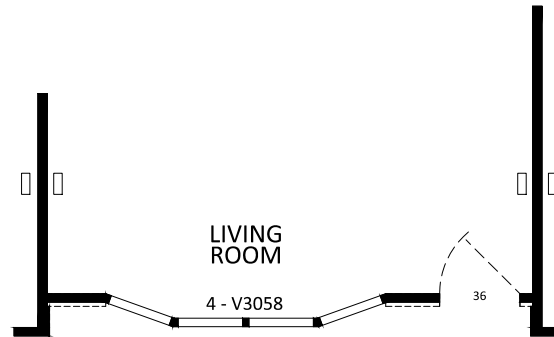
9'
OPTION CORNER TUB BATH



OPTIONAL DEN



9'
OPTIONAL CORNER SHOWER BATH



19'-4"
OPTIONAL RECESSED ENTRY

SCALE: 1/8" = 1'-0"

CUSTOMER: ----



DIVISION 31, P.O. BOX 670
SAN JACINTO, CA 92581
(951) 654-9321

REVISIONS

REVISION DATE:

DRAW DATE: 6-21-17

DRAWING TITLE:

MODEL NO.

MODEL REV.

SHEET NO.

REVISION BY:

DRAWN BY: DCS

SALES FLOOR PLAN OPTIONS
6628-5BD-3BA

K730CT

DAPIA REV. ----

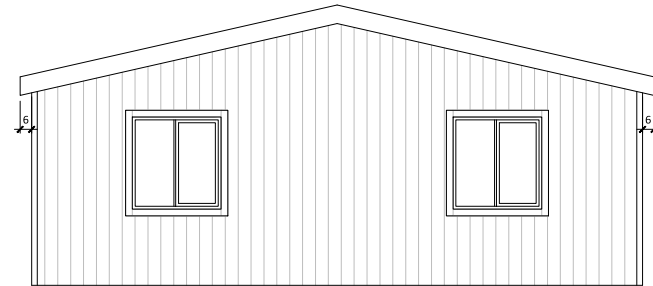
REF NO. ----



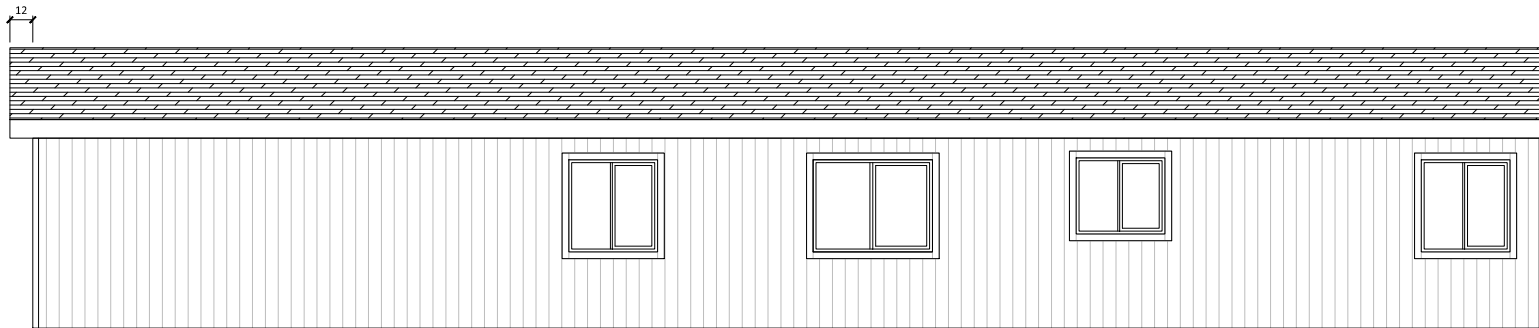
LEFT



REAR



FRONT



RIGHT

CUSTOMER: ----



DIVISION 31, P.O. BOX 670
 SAN JACINTO, CA 92581
 (951) 654-9321

REVISIONS

REVISION DATE:	
REVISION BY:	

DRAW DATE:	6-21-17
DRAWN BY:	DCS

DRAWING TITLE:	
	EXTERIOR ELEVATIONS
	6628-5BD-3BA

MODEL NO.	
	K730CT

MODEL REV.	A
DAPIA REV.	----

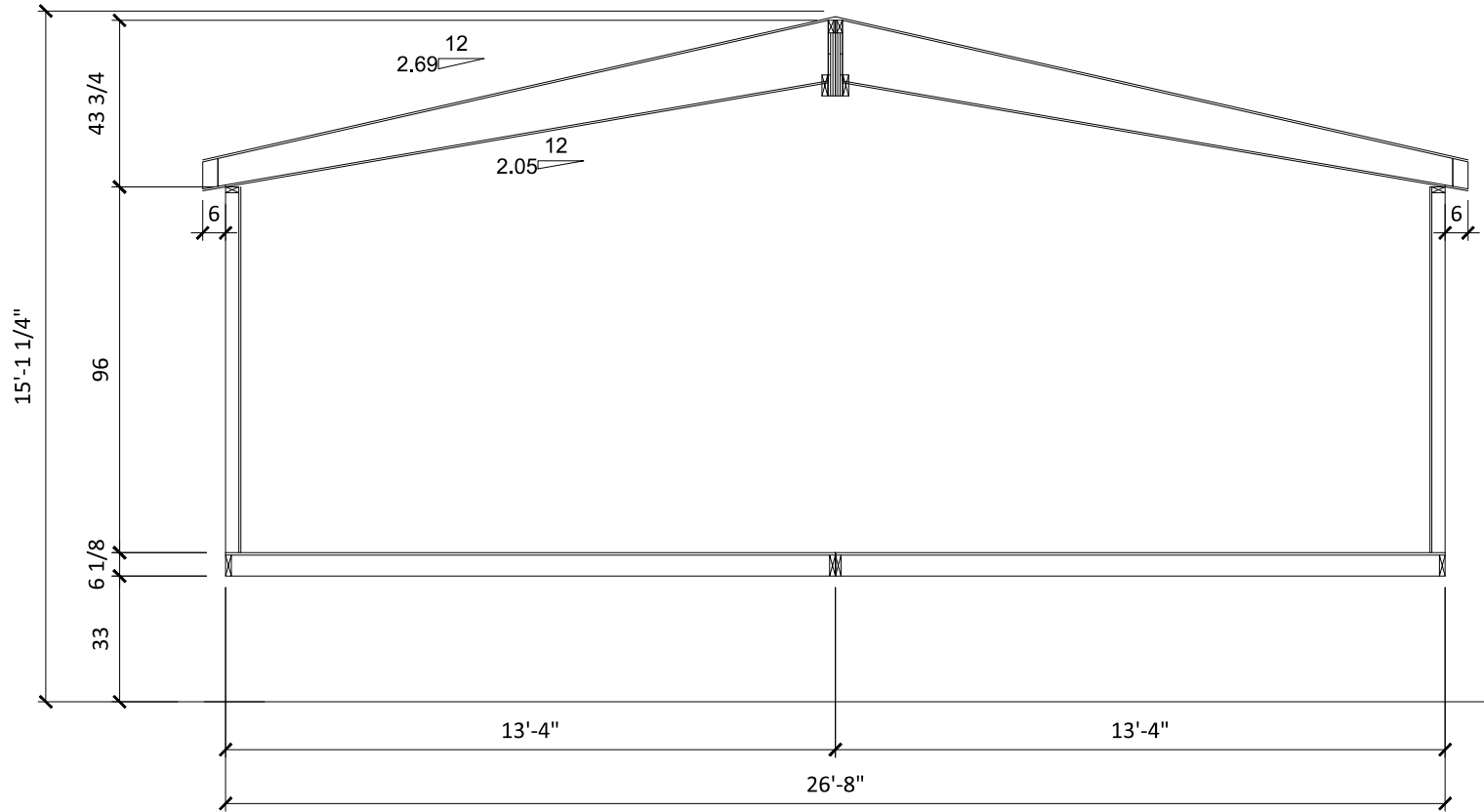
SHEET NO.	AE-101
REF NO.	----

F-49C TRUSS

SK49C TRUSS

F-49C TRUSS

SK49C TRUSS



ALL DIMENSIONS ARE APPROXIMATE AND MAY NOT REFLECT THE TRUE WIDTH AND HEIGHT OF EACH UNIT. DIMENSIONS DO NOT INCLUDE SIDING, TRIM, EAVES, ROOF DRIP RAIL, HOSE BIBBS, FLUES, ETC.

UNIT DIMENSIONS ARE NOT TO BE USED AS SHIPPING DIMENSIONS.

CUSTOMER: ----



DIVISION 31, P.O. BOX 670
SAN JACINTO, CA 92581
(951) 654-9321

REVISIONS

	REVISION DATE:
	REVISION BY:

	REVISION DATE:
	REVISION BY:

	DRAW DATE: 6-21-17
	DRAWN BY: DCS

	DRAWING TITLE:
	CROSS SECTION
	6628-5BD-3BA

	MODEL NO.
	K730CT

	MODEL REV.
	A
	DAPIA REV.

	SHEET NO.
	AS-101
	REF NO.
