

VIC

CONDENSING VENT




3" TO 24"

SINGLE WALL – DOUBLE WALL – INSULATED



GENERAL INFORMATION

An aerial photograph of a large industrial facility with a grey roof and blue accents. The building is surrounded by green trees and a large parking lot filled with cars. The sky is clear and blue.

Industrial Chimney Company was established in 1991 by a small group of partners with over 75 years combined experience in the chimney industry. Our initial focus was on developing the best performing, easiest to install commercial/industrial chimney on the market. Our Model VIC satisfied both criteria so well that over the last twenty plus years we have supplied thousands of systems to vent all manner of equipment from diesel stationary engines to high efficiency boilers. Meanwhile our business has grown to become the largest chimney manufacturer in Canada with over 110,000 ft² and 200 employees, most with over 10 years of experience. Our factory runs 24 hours a day, twelve months a year. It is situated on over 20 acres of prime industrial property and is filled with the most sophisticated, state of the art machinery available. Our focus on the specialty hearth retailers has cemented our reputation as a leader in innovation both in the manner we build product and by the relationships we establish with our customers

From the beginning our objective has been to engineer the best products possible. Our research and development laboratory is fully accredited by UL/ULC and Warnock Hersey. We employ many of the most talented engineers, technicians and designers in the industry. Our R&D efforts result in products that enable better, faster installations while generally requiring fewer parts. Our goal is to do everything possible to help our business partner's supply and install only the best chimney for the end user.

We believe that our long-term accomplishments are tied to our commitment to people both inside and outside our company. While we continuously

invest in machinery and processes the most gratifying returns come from investment in people. Our greatest sense of accomplishment comes when we see an employee or customer achieve their personal or business goals. We continuously make major commitments in the promotion and funding of industry education.

We focus our efforts in four areas. We manufacture a full line of residential venting for a wide variety of applications including wood, pellet, gas and oil fired appliances. We manufacture a full line of built in wood burning, high-efficiency, clean burning fireplaces. We also build a line of clean-burning decorative fireplaces. Finally we manufacture a complete line of commercial and industrial venting for applications ranging from condensing vent, positive pressure stack, engine exhaust, natural draft chimney, and grease duct. Since the beginning, our residential, commercial, and industrial venting products have enabled us to secure a leadership role in each segment of the industry.

Thanks to the strong support of our agents, representatives, distributors, and retailers our strategy is working. We have grown dramatically over the last years.

The catalogue contains information on our condensing vent model VIC. We have done our best to ensure it is complete and up to date. If you have any questions or concerns regarding this or any other of our products please feel free to contact us directly. We will be pleased to assist you.

The ICC team

TABLE OF CONTENTS

Condensing Vent	2
General Assembly And Parts Requirements	4
Lengths	6
Elbows	10
Rise And Offset Calculator	14
Boot Tees.	16
Tees	17
Adapters	18
Tee Caps	19
Terminations	20
Tapered Increasesers – Supports.	22
Supports	23
Fire Stops – Storm Collars	24
Radiation Shields	25
Locking Bands	26
Flashings.	27
Quotation Request	28
Condensing Vent Warranty	29

**REFER TO OUR WEB SITE FOR INSTALLATION INSTRUCTIONS,
SUBMITTAL SHEET, AND OFFSET CALCULATOR AT;**

www.icc-rsf.com/en/installation-instructions

CONDENSING VENT

APPLICATIONS:

ICC Model VIC is a tested single wall, double wall, or insulated double wall vent system for condensing or near condensing appliances. Tested and listed to : UL 1738 / ULC S636 (see label on page 29). ICC Condensing Vent can be used in the following applications:

- Category I, II, III and IV gas fired appliances producing a maximum flue gas temperature of 550°F.
- BH gas vent for appliances producing a maximum flue gas temperature of 550°F
- Appliances that produce condensation in the exhaust stream

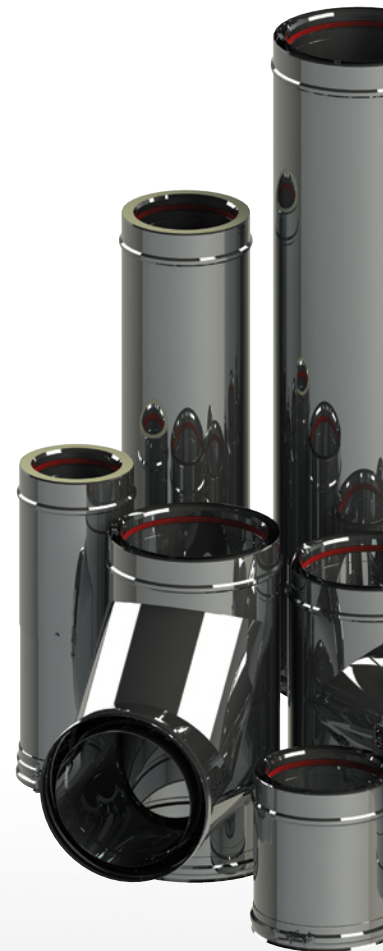
CONSTRUCTION:


VIC's inner liner is constructed of either super ferritic type AL29-4C stainless steel or out of type 444 stainless steel. Both alloys meet the requirements of the UL corrosion resistance test. When a double wall system is specified, the outer casing will be made of a type 430 stainless steel.

The system is available in the following configurations:

- Single wall – for breeching and connecting multiple appliances together. It is lightweight and easy to install. It is recommended that single wall VIC be installed inside the building or where ambient temperatures remain above freezing.
- Double wall – improves heat retention in the flue. This increases draft strength and can reduce clearance to combustibles in some cases. Double wall also has a lower impact on the surrounding environment's temperature (e.g. mechanical room). It is approved for interior and exterior installations.
- Double wall insulated – the best choice for exterior installations in cold weather climates. The insulated casing minimizes heat loss and promotes increased draft.

The inner liner of 5"-16" diameter VIC is either Tungsten Arc Welded or Laser welded. Diameters 18"-24" are Tungsten Arc Welded. Both Laser and Tungsten Arc welds are butt welds. Butt welding minimizes the impact on the steel, resulting in a smooth and corrosion resistant seam.





VIC incorporates a silicone gasket which creates a seal that is both gas and water tight. The silicone seal drastically reduces installation time by eliminating the need for sealant to be applied in the field.

VIC locking bands hold the sections together without the need of additional screws. The captive nut / bolt system is exceptionally strong and results in a straight, secure run of pipe.

INNOVATION:

ICC is a market leader in venting manufacturing. We apply leading-edge technology and engineering to find innovative solutions for everyday problems. Our innovative components are conceived with the goal of faster, easier assembly, which is the best way to reduce labor cost and installation errors. All ICC products are built to meet modern needs in the harshest environments.

ENGINEERING:

Upon request, our engineers will analyze schematic drawings and appliance data to determine the correct size and parts for any venting system. We will also provide detailed drawings and a parts list to facilitate installation.

INSTALLATION:

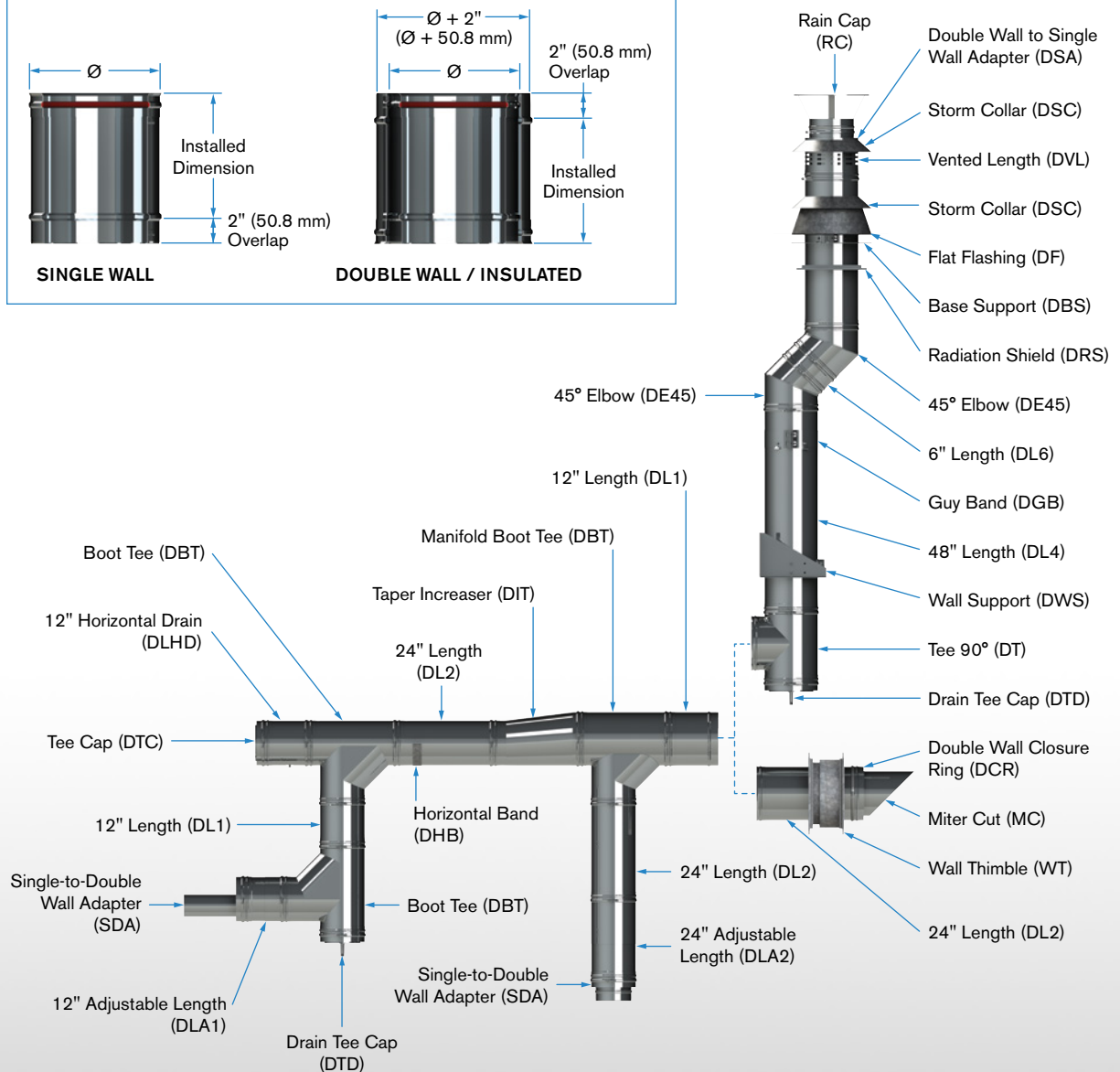
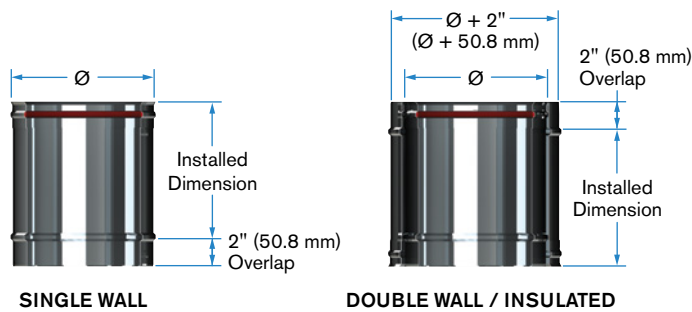
VIC fits right the first time thanks to tight tolerances and precision manufacturing. Our factory installed silicone gasket eliminates the requirement for sealant to be applied on site, and ensures a gas and water tight seal. Lengths are secured with heavy-duty locking bands that draw the lengths together. Our locking bands have a captive nut and bolt, reducing the likelihood of missing hardware. The result is fast, trouble free installations.

GENERAL ASSEMBLY AND PARTS REQUIREMENTS

DRAWING OF HORIZONTAL AND VERTICAL INSTALLATIONS.

COMMON DIMENSIONS:

The following dimensions are common to single or double wall lengths, tees, elbows and increasers. The "Overlap" consists of the formed end of each component and is not factored in the installed length of the part.



Note: A pitch of at least 1/4" to the foot or 2° must be maintained on horizontal run to prevent the accumulation of corrosive condensate.

PART IDENTIFICATION:

Model VIC uses an alphanumeric code to identify the various components; the code is generated in the following manner.

HC-08DLA1-FD

1. The first two letters of the code will identify the type of part by grouping.
HC – is a length, **HE** – is a tee or an elbow, **HM** – is an accessory, including terminations and adapters
HF – is a flashing.

HC-08DLA1-FD

2. The two digit number identifies the inside diameter of the vent in inches.
Model VIC is available in **3, 4, 5, 6, 7, 8, 9, 10, 12, 14, 16, 18, 20, 22, and 24** inches in diameter.

HC-08DLA1-FD

3. The next letter will describe the construction of the vent.
There is no designation for single wall (continue to next section), **D** – double wall, **I** – insulated double wall.

HC-08DLA1-FD

4. The following letters identify what the part is, this qualifier will be 1 to 4 letters
L – Length, **LA** – Adjustable Length, **LHD** – Drain Section, **IPS** – Test Port Section, **IPSD** – Test Port Section with Drain, **DLV** – Ventilated Length, **E** – Elbow, **BT** – Boot Tee, **T** – Tee, **TC** – Tee Cap, **TD** – Tee Cap with Drain, **RC** – Rain Cap, **MC** – Miter Cut, **SCR** – Screened Closure Ring, **EC** – Exit Cone, **DCR** – Double Wall Closure Ring, **DSA** – Double to Single Wall Adapter, **SDA** – Single to Double Wall Adapter, **IT** – Tapered Increaser, **BS** – Base Support, **WS** – Wall Support, **GB** – Guy Band, **HB** – Horizontal Band, **FS** – Firestop, **FS2** – Firestop, **RS** – Radiation Shield, **WT** – Wall Thimble, **F, FA, FB** – Single Wall Adjustable Flashings, **DF, DFA, DFB** – Double Wall adjustable Flashing, **SC** – Single Wall Storm Collar, **DSC** – Double Wall Storm Collar.

HC-08DLA1-FD

5. The number that follows will only be present for lengths, tees and increasers. For lengths it denotes the total length in feet (except 6" lengths, which use 6). For increasers and tees, it denotes a change in diameter at the outlet of an increaser or of the mouth of a tee, where the number is the new diameter.

HC-08DLA1-FD

6. The final segment of the code defines the materials of which the vent is composed: **F** is single wall AL29-4C stainless steel, **E** is single wall 444 stainless steel, **FD** is a double wall or insulated flue in AL29-4C and a casing of 430 stainless, **ED** is a double wall or insulated flue in 444 and a casing in 430 stainless steel.

An example of a code for a double wall 8-inch diameter 3-foot length with a flue made of AL29-4C is: **HC-08DL3-FD**
An example of a code for a single wall 12-inch diameter boot tee with a 6-inch branch made of 444 is: **HE-12BT06-E**

LENGTHS

LENGTH - L6 - L1 - L2 - L4

Lengths: Can be utilized vertically or horizontally. When lengths are installed horizontally, a slope of 1/4" per foot or 2° must be maintained towards the appliance to prevent the accumulation of corrosive condensate. Each length has a factory installed silicone gasket and locking band.



SINGLE WALL

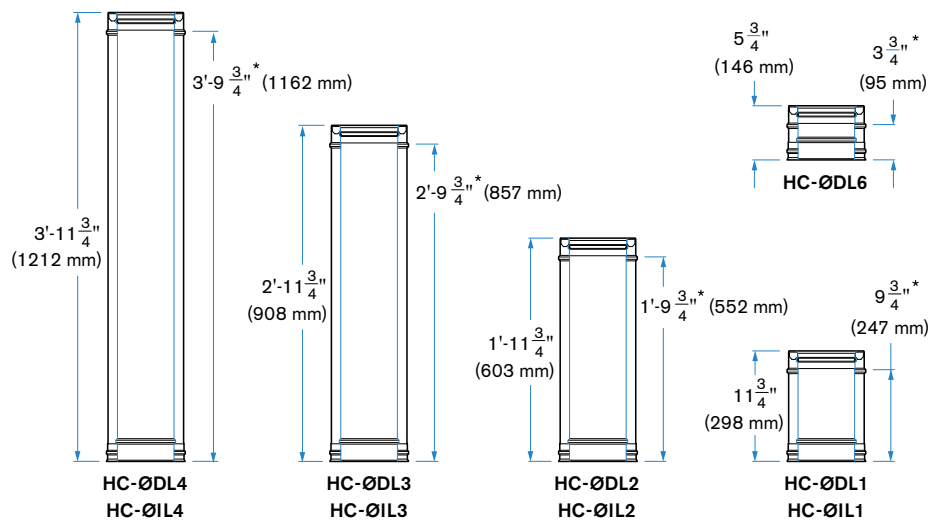
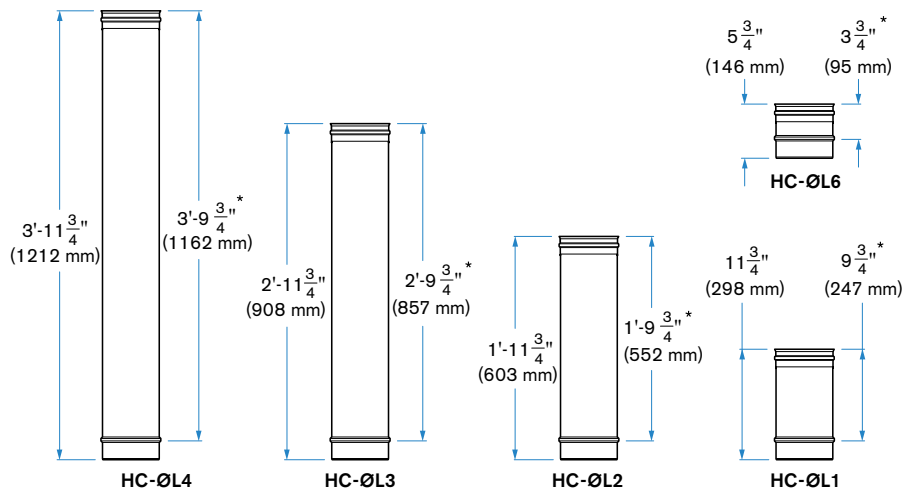


DOUBLE WALL



INSULATED

		SINGLE WALL		DOUBLE WALL		INSULATED	
Flue Casing		AL29-4C	SS 444	AL29-4C	SS 444	AL29-4C	SS 444
Insulation		N/A	N/A	SS 430	SS 430	SS 430	SS 430
		N/A	N/A	N/A	N/A	1 Inch	1 Inch
LENGTH		PRODUCT CODE					
Inch	mm						
6	152	HC-ØL6-F	HC-ØL6-E	HC-ØDL6-FD	HC-ØDL6-ED	HC-ØIL6-FD	HC-ØIL6-ED
12	304	HC-ØL1-F	HC-ØL1-E	HC-ØDL1-FD	HC-ØDL1-ED	HC-ØIL1-FD	HC-ØIL1-ED
24	609	HC-ØL2-F	HC-ØL2-E	HC-ØDL2-FD	HC-ØDL2-ED	HC-ØIL2-FD	HC-ØIL2-ED
36	914	HC-ØL3-F	HC-ØL3-E	HC-ØDL3-FD	HC-ØDL3-ED	HC-ØIL3-FD	HC-ØIL3-ED
48	1219	N/A	HC-ØL4-E	N/A	HC-ØDL4-ED	N/A	HC-ØIL4-ED



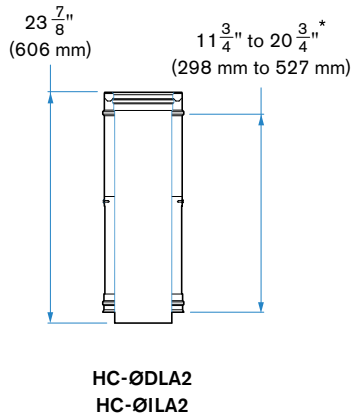
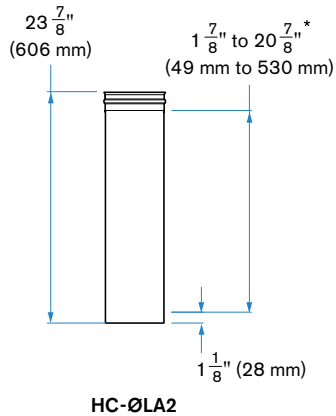
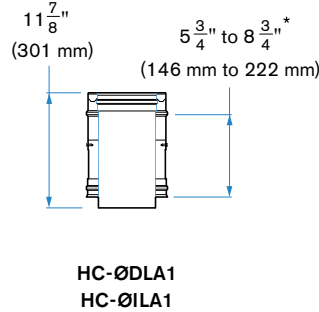
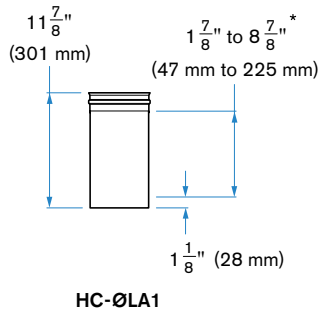
Notes: 1. 4 foot lengths are only available with 444 SS.

2. All available flue diameter sizes are in inches. Flue diameters: 3", 4", 5", 6", 7", 8", 9", 10", 12", 14", 16", 18", 20", 22" and 24"
* Installed measurement.

ADJUSTABLE LENGTH - LA1 - LA2

Adjustable Lengths: Used when a non-standard length is required to achieve a specific offset. Single wall adjustable lengths have a greater range of adjustment than double wall / insulated. Adjustable lengths have a factory installed silicone gasket and specific locking band.

		SINGLE WALL		DOUBLE WALL		INSULATED	
Flue Casing	305	AL29-4C	SS 444	AL29-4C	SS 444	AL29-4C	SS 444
Insulation	1 Inch	N/A	N/A	SS 430	SS 430	SS 430	SS 430
		N/A	N/A	N/A	N/A	1 Inch	1 Inch
LENGTH		PRODUCT CODE					
Inch	mm	HC-ØLA1-F	HC-ØLA1-E	HC-ØDLA1-FD	HC-ØDLA1-ED	HC-ØILA1-FD	HC-ØILA1-ED
12	305						
24	610	HC-ØLA21-F	HC-ØLA2-E	HC-ØDLA2-FD	HC-ØDLA2-ED	HC-ØILA2-FD	HC-ØILA2-ED



SINGLE WALL



DOUBLE WALL



INSULATED

Note: All available flue diameter sizes are in inches. Flue diameters: 3", 4", 5", 6", 7", 8", 9", 10", 12", 14", 16", 18", 20", 22" and 24"
* Installed measurement.

LENGTHS



SINGLE WALL



DOUBLE WALL



INSULATED



SINGLE WALL



DOUBLE WALL

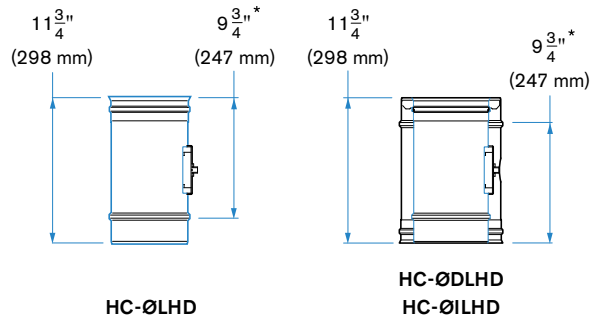


INSULATED

HORIZONTAL DRAIN SECTION - LHD

Horizontal Drain Section: Required to drain condensate away from the system when a horizontal run exceeds 30 feet or 9 meters. Includes a factory installed silicone gasket and locking band.

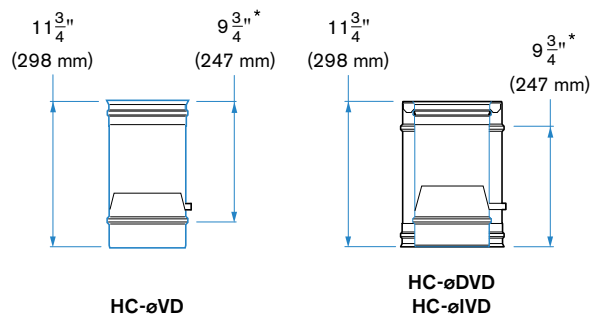
		SINGLE WALL		DOUBLE WALL		INSULATED	
Flue		AL29-4C	SS 444	AL29-4C	SS 444	AL29-4C	SS 444
Casing		N/A	N/A	SS 430	SS 430	SS 430	SS 430
Insulation		N/A	N/A	N/A	N/A	1 Inch	1 Inch
LENGTH		PRODUCT CODE					
Inch	mm						
12	305	HC-ØLHD-F	HC-ØLHD-E	HC-ØDLHD-FD	HC-ØDLHD-ED	HC-ØILHD-FD	HC-ØILHD-ED



VERTICAL DRAIN SECTION - VD

Vertical Drain Section: Permits drainage of condensate or rain water from an open vertical vent. Includes factory installed silicone gasket and locking band.

		SINGLE WALL		DOUBLE WALL		INSULATED	
Flue		AL29-4C	SS 444	AL29-4C	SS 444	AL29-4C	SS 444
Casing		N/A	N/A	SS 430	SS 430	SS 430	SS 430
Insulation		N/A	N/A	N/A	N/A	1 Inch	1 Inch
LENGTH		PRODUCT CODE					
Inch	mm						
12	305	HC-ØVD-F	HC-ØVD-E	HC-ØDVD-FD	HC-ØDVD-ED	HC-ØIVD-FD	HC-ØIVD-ED

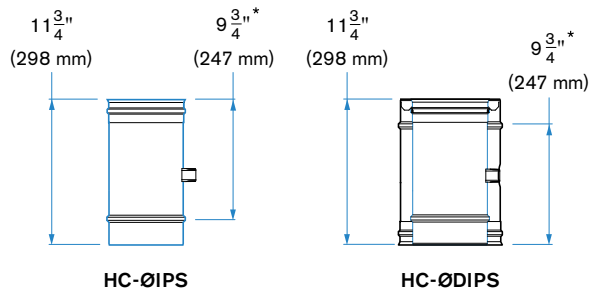


Note: All available flue diameter sizes are in inches. Flue diameters: 5", 6", 7", 8", 9", 10", 12", 14", 16", 18", 20", 22" and 24"
* Installed measurement.

INLINE TEST PORT SECTION - IPS

Inline Test Port Section: Can be installed horizontally or vertically and is used in conjunction with a test probe with a 3/4" NPT female fitting. Includes factory installed silicone gasket and locking band.

		SINGLE WALL		DOUBLE WALL	
Flue		AL29-4C	SS 444	AL29-4C	SS 444
Casing		N/A	N/A	SS 430	SS 430
Insulation		N/A	N/A	N/A	N/A
LENGTH		PRODUCT CODE			
Inch	mm	HC-ØIPS-F	HC-ØIPS-E	HC-ØDIPS-FD	HC-ØDIPS-ED
12	305	HC-ØIPSD-F	HC-ØIPSD-E	HC-ØDIPSD-FD	HC-ØDIPSD-ED



SINGLE WALL

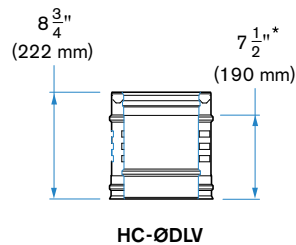


DOUBLE WALL

VENTILATED LENGTH - DLV

Ventilated Length: Required in double wall systems that terminate vertically above a combustible chase/roof assembly. The ventilated length is installed below the termination. Includes factory installed silicone gasket and locking band.

		DOUBLE WALL	
Flue		AL29-4C	SS 444
Casing		SS 430	SS 430
Insulation		N/A	N/A
LENGTH		PRODUCT CODE	
Inch	mm	HC-ØDLV-FD	HC-ØDLV-ED
12	305		



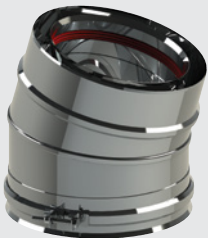
DOUBLE WALL

Note: All available flue diameter sizes are in inches. Flue diameters: 3", 4", 5", 6", 7", 8", 9", 10", 12", 14", 16", 18", 20", 22" and 24"
* Installed measurement.

ELBOWS



SINGLE WALL



DOUBLE WALL

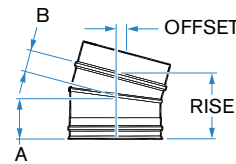
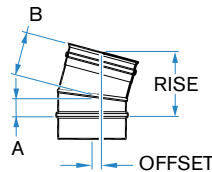


INSULATED

ELBOW 15° - E15

15 Degree Elbow: Installed when a change of direction is required in the vent (offset). When calculating flow, a 15 degree elbow is equivalent to 3 feet of horizontal vent. Includes a factory installed silicone gasket and locking band.

SINGLE WALL				
Flue	AL29-4C		SS 444	
PRODUCT CODE	HE-ØE15-F		HE-ØE15-E	
DOUBLE WALL				
Flue	AL29-4C	SS 444	AL29-4C	SS 444
Casing	SS 430	SS 430	SS 430	SS 430
Insulation	N/A	N/A	1 Inch	1 Inch
PRODUCT CODE	HE-ØDE15-FD	HE-ØDE15-ED	HE-ØE15-FD	HE-ØE15-ED



Ø		SINGLE WALL							
		Offset		Rise		A		B	
Inch	mm	Inch	mm	Inch	mm	Inch	mm	Inch	mm
5	127	1	25	5 1/2	140	1 7/8	48	3 3/4	95
6	152	1	25	5 5/8	143	2	51	3 3/4	95
7	178	1	25	5 3/4	146	2	51	3 7/8	98
8	203	1	25	5 7/8	149	2 1/8	54	3 7/8	98
9	229	1 1/8	29	6	152	2 1/4	57	4	102
10	254	1 1/8	29	6 1/8	156	2 1/4	57	4	102
12	305	1 1/8	29	6 3/8	162	2 3/8	60	4 1/8	105
14	356	1 1/8	29	6 5/8	168	2 1/2	64	4 1/4	108
16	406	1 1/4	32	6 7/8	175	2 5/8	67	4 3/8	111
18	457	1 1/4	32	7 1/8	181	2 3/4	70	4 1/2	114
20	508	1 1/4	32	7 1/2	191	2 7/8	73	4 3/4	121
22	559	1 1/4	32	7 3/4	197	3	76	4 7/8	124
24	610	1 3/8	35	8	203	3 1/8	79	5	127

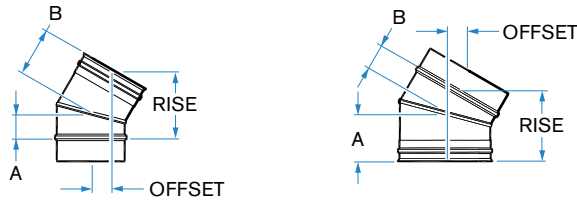
Ø		DOUBLE WALL / INSULATED							
		Offset		Rise		A		B	
Inch	mm	Inch	mm	Inch	mm	Inch	mm	Inch	mm
5	127	1	25	5 5/8	143	3 3/4	95	1 7/8	48
6	152	1	25	5 3/4	146	3 3/4	95	2	51
7	178	1	25	5 7/8	149	3 7/8	98	2 1/8	54
8	203	1	25	6	152	3 7/8	98	2 1/8	54
9	229	1	25	6 1/8	156	4	102	2 1/4	57
10	254	1 1/8	29	6 1/4	159	4	102	2 1/4	57
12	305	1 1/8	29	6 1/2	165	4 1/8	105	2 3/8	60
14	356	1 1/8	29	6 3/4	171	4 1/4	108	2 1/2	64
16	406	1 1/8	29	7	178	4 3/8	111	2 5/8	67
18	457	1 1/4	32	7 1/4	184	4 5/8	117	2 3/4	70
20	508	1 1/4	32	7 1/2	191	4 3/4	121	2 7/8	73
22	559	1 1/4	32	7 3/4	197	4 7/8	124	3	76
24	610	1 3/8	35	8	203	5	127	3 1/8	79

Note: All available flue diameter sizes are in inches. Flue diameters: 3", 4", 5", 6", 7", 8", 9", 10", 12", 14", 16", 18", 20", 22" and 24"

ELBOW 30° - E30

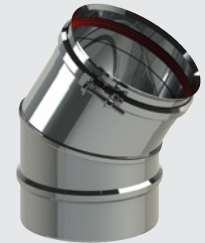
30 Degree Elbow: Installed when a change of direction is required in the vent (offset). When calculating flow, a 30 degree elbow is equivalent to 5 feet of horizontal vent. Includes a factory installed silicone gasket and locking band.

		SINGLE WALL			
Flue		AL29-4C		SS 444	
PRODUCT CODE		HE-ØE30-F		HE-ØE30-E	
		DOUBLE WALL		INSULATED	
Flue		AL29-4C	SS 444	AL29-4C	SS 444
Casing		SS 430	SS 430	SS 430	SS 430
Insulation		N/A	N/A	1 Inch	1 Inch
PRODUCT CODE		HE-ØDE30-FD	HE-ØDE30-ED	HE-ØIE30-FD	HE-ØIE30-ED



Ø		SINGLE WALL							
		Offset		Rise		A		B	
Inch	mm	Inch	mm	Inch	mm	Inch	mm	Inch	mm
5	127	2 1/8	54	5 3/4	146	2 1/4	57	4 1/8	105
6	152	2 1/8	54	6	152	2 3/8	60	4 1/4	108
7	178	2 1/4	57	6 1/4	159	2 1/2	64	4 3/8	111
8	203	2 1/4	57	6 1/2	165	2 5/8	67	4 1/2	114
9	229	2 3/8	60	6 3/4	171	2 3/4	70	4 5/8	117
10	254	2 3/8	60	7	178	3	76	4 3/4	121
12	305	2 1/2	64	7 1/2	191	3 1/4	83	5	127
14	356	2 3/4	70	8	203	3 1/2	89	5 1/4	133
16	406	2 7/8	73	8 1/2	216	3 3/4	95	5 1/2	140
18	457	3	76	9	229	4	102	5 3/4	146
20	508	3 1/8	79	9 1/2	241	4 1/2	114	6 1/8	156
22	559	3 1/4	83	10	254	4 1/2	114	6 3/8	162
24	610	3 3/8	86	10 1/2	267	4 7/8	124	6 5/8	168

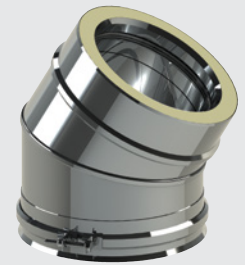
Ø		DOUBLE WALL / INSULATED							
		Offset		Rise		A		B	
Inch	mm	Inch	mm	Inch	mm	Inch	mm	Inch	mm
5	127	2 1/8	54	6	152	4 1/8	105	2 1/4	57
6	152	2 1/8	54	6 1/4	159	4 1/4	108	2 3/8	60
7	178	2 1/4	57	6 1/2	165	4 3/8	111	2 1/2	64
8	203	2 1/4	57	6 3/4	171	4 1/2	114	2 5/8	67
9	229	2 3/8	60	7	178	4 5/8	117	2 3/4	70
10	254	2 3/8	60	7 1/4	184	4 3/4	121	3	76
12	305	2 1/2	64	7 3/4	197	5	127	3 1/4	83
14	356	2 3/4	70	8 1/4	210	5 1/4	133	3 1/2	89
16	406	2 7/8	73	8 3/4	222	5 1/2	140	3 3/4	95
18	457	3	76	9 1/4	235	5 3/4	146	4	102
20	508	3 1/8	79	9 3/4	248	6 1/8	156	4 1/4	108
22	559	3 1/4	83	10 1/4	260	6 3/8	162	4 1/2	114
24	610	3 3/8	86	10 3/4	273	6 5/8	168	4 7/8	124



SINGLE WALL



DOUBLE WALL



INSULATED

Note: All available flue diameter sizes are in inches. Flue diameters: 3", 4", 5", 6", 7", 8", 9", 10", 12", 14", 16", 18", 20", 22" and 24"

ELBOWS



SINGLE WALL



DOUBLE WALL



INSULATED

ELBOW 45° - E45

45 Degree Elbow: Installed when a change of direction is required in the vent (offset). When calculating flow, a 45 degree elbow is equivalent to 8 feet of horizontal vent. Includes a factory installed silicone gasket and locking band.

SINGLE WALL				
Flue	AL29-4C		SS 444	
PRODUCT CODE	HE-ØE45-F		HE-ØE45-E	
DOUBLE WALL				
Flue	AL29-4C	SS 444	AL29-4C	SS 444
Casing	SS 430	SS 430	SS 430	SS 430
Insulation	N/A	N/A	1 Inch	1 Inch
PRODUCT CODE	HE-ØDE45-FD	HE-ØDE45-ED	HE-ØIE45-FD	HE-ØIE45-ED



Ø		SINGLE WALL							
		Offset		Rise		A		B	
Inch	mm	Inch	mm	Inch	mm	Inch	mm	Inch	mm
5	127	3 1/4	83	5 3/4	146	2 5/8	67	4 1/2	114
6	152	3 3/8	86	6 1/8	156	2 7/8	73	4 5/8	117
7	178	3 1/2	89	6 1/2	165	3	76	4 7/8	124
8	203	3 5/8	92	6 7/8	175	3 1/4	83	5 1/8	130
9	229	3 3/4	95	7 1/8	181	3 1/2	89	5 1/4	133
10	254	3 7/8	98	7 1/2	191	3 5/8	92	5 1/2	140
12	305	4 1/4	108	8 1/4	210	4 1/8	105	5 7/8	149
14	356	4 1/2	114	9	229	4 1/2	114	6 3/8	162
16	406	4 7/8	124	9 5/8	244	4 7/8	124	6 3/4	171
18	457	5 1/8	130	10 3/8	264	5 3/8	137	7 1/8	181
20	508	5 3/8	137	11 1/8	283	5 3/4	146	7 5/8	194
22	559	5 3/4	146	11 3/4	298	6 1/8	156	8	203
24	610	6	152	12 1/2	318	6 5/8	168	8 3/8	213

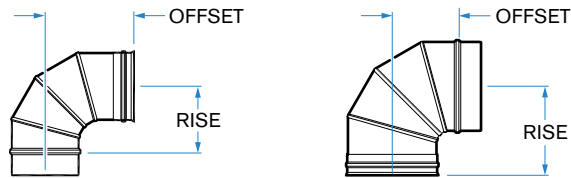
Ø		DOUBLE WALL				INSULATED			
		Offset		Rise		A		B	
Inch	mm	Inch	mm	Inch	mm	Inch	mm	Inch	mm
5	127	3 1/4	83	6 3/8	162	4 1/2	114	2 5/8	67
6	152	3 3/8	86	6 5/8	168	4 5/8	117	2 7/8	73
7	178	3 1/2	89	7	178	4 7/8	124	3	76
8	203	3 5/8	92	7 3/8	187	5 1/8	130	3 1/4	83
9	229	3 3/4	95	7 3/4	197	5 1/4	133	3 1/2	89
10	254	3 7/8	98	8 1/8	206	5 1/2	140	3 5/8	92
12	305	4 1/4	108	8 3/4	222	5 7/8	149	4 1/8	105
14	356	4 1/2	114	9 1/2	241	6 3/8	162	4 1/2	114
16	406	4 7/8	124	10 1/4	260	6 3/4	171	4 7/8	124
18	457	5 1/8	130	10 7/8	276	7 1/8	181	5 3/8	137
20	508	5 3/8	137	11 5/8	295	7 1/2	191	5 3/4	146
22	559	5 3/4	146	12 3/8	314	8	203	6 1/8	156
24	610	6	152	13	330	8 3/8	213	6 1/2	165

Note: All available flue diameter sizes are in inches. Flue diameters: 3", 4", 5", 6", 7", 8", 9", 10", 12", 14", 16", 18", 20", 22" and 24"

ELBOW 90° - E90

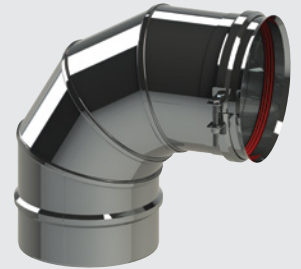
90 Degree Elbow: Installed when a change of direction is required in the vent (offset). When calculating flow, a 90 degree elbow is equivalent to 15 feet of horizontal vent. Includes a factory installed silicone gasket and locking band.

SINGLE WALL			
Flue	AL29-4C	SS 444	
PRODUCT CODE	HE-ØE90-F	HE-ØE90-E	
DOUBLE WALL			
Flue	AL29-4C	SS 444	
Casing	SS 430	SS 430	
Insulation	N/A	N/A	
PRODUCT CODE	HE-ØDE90-FD	HE-ØDE90-ED	



Ø		SINGLE WALL			
		Offset		Rise	
Inch	mm	Inch	mm	Inch	mm
5	127	7 1/2	191	5 1/2	140
6	152	8	203	6	152
7	178	8 1/2	216	6 1/2	165
8	203	9	229	7	178
9	229	9 1/2	241	7 1/2	191
10	254	10	254	8	203
12	305	11	279	9	229
14	356	12	305	10	254
16	406	13	330	11	279
18	457	14	356	12	305
20	508	15	381	13	330
22	559	16	406	14	356
24	610	17	432	15	381
Ø		DOUBLE WALL			
		Offset		Rise	
Inch	mm	Inch	mm	Inch	mm
5	127	5 1/2	140	7 1/2	191
6	152	6	152	8	203
7	178	6 1/2	165	8 1/2	216
8	203	7	178	9	229
9	229	7 1/2	191	9 1/2	241
10	254	8	203	10	254
12	305	9	229	11	279
14	356	10	254	12	305
16	406	11	279	13	330
18	457	12	305	14	356
20	508	13	330	15	381
22	559	14	356	16	406
24	610	15	381	17	432

Note: All available flue diameter sizes are in inches. Flue diameters: 3", 4", 5", 6", 7", 8", 9", 10", 12", 14", 16", 18", 20", 22" and 24"



SINGLE WALL



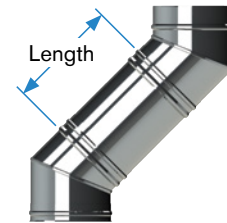
DOUBLE WALL

RISE AND OFFSET CALCULATOR

OPTION 1: LENGTH OR RISE

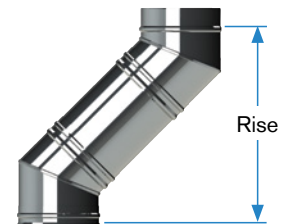
	LENGTH CALCULATOR: CALCULATES THE LENGTH BETWEEN ELBOWS.			
	LENGTH (L)	OFFSET	Ø (ID)	OFFSET Ø (15°, 30° OR 45°)
SINGLE WALL				
DOUBLE WALL				

$$L = \frac{\text{OFFSET}}{\sin \theta} - \theta \text{TAN}(\frac{\theta}{2}) - A - B$$



	RISE CALCULATOR: CALCULATES THE VERTICAL HEIGHT OF AN OFFSET.			
	RISE	LENGTH (L)	Ø (ID)	OFFSET Ø (15°, 30° OR 45°)
SINGLE WALL				
DOUBLE WALL				

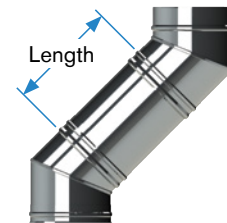
$$\text{RISE} = A + B + \theta \text{TAN}(\frac{\theta}{2}) + [A + B + \theta \text{TAN}(\frac{\theta}{2}) + L] \cos \theta$$



OPTION 2: LENGTH OR OFFSET

	LENGTH CALCULATOR: CALCULATES THE LENGTH BETWEEN ELBOWS.			
	LENGTH (L)	RISE	Ø (ID)	OFFSET Ø (15°, 30° OR 45°)
SINGLE WALL				
DOUBLE WALL				

$$L = \frac{[\text{RISE} - A - B - \theta \text{TAN}(\frac{\theta}{2})] - A - B - \theta \text{TAN}(\frac{\theta}{2})}{\cos \theta}$$



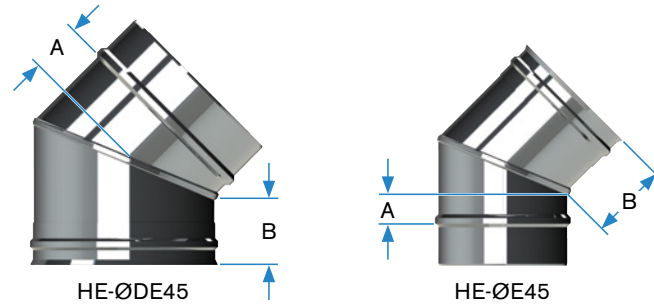
	OFFSET CALCULATOR: CALCULATES THE HORIZONTAL DISTANCE OF THE OFFSET.			
	OFFSET	LENGTH (L)	Ø (ID)	OFFSET Ø (15°, 30° OR 45°)
SINGLE WALL				
DOUBLE WALL				

$$\text{OFFSET} = [A + B + L + \theta \text{TAN}(\frac{\theta}{2})] \sin \theta$$



- Notes:**
1. Available Offset angles (Ø) are 15°, 30° or 45°.
 2. Dimensions can be ± 0.25" (6.35mm).
 3. Three values are required: Inside diameter (ID), Offset angle and one of the following: Length or Rise or Offset

MEASUREMENT A AND B EXAMPLE

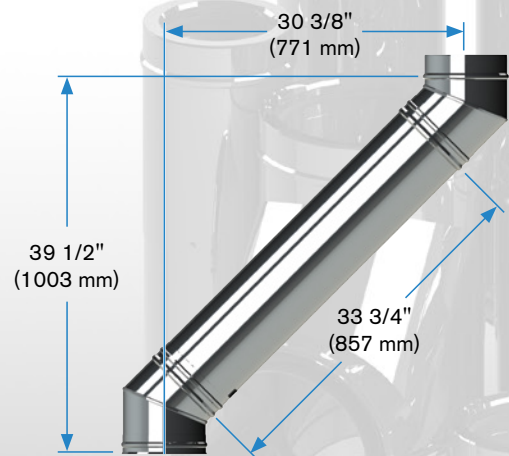


	SINGLE WALL			
	A		B	
	Inch	mm	Inch	mm
15°				
30°	1 1/2	38	3 1/2	89
45°				

	DOUBLE WALL / INSULATED			
	A		B	
	Inch	mm	Inch	mm
15°	1 3/8	35	3 3/8	86
30°	1 1/4	32	3 1/4	83
45°	1 1/8	29	3 1/8	79

Note: These dimensions are common to all diameters.

OFFSET EXAMPLE



HE-10DE45-FD - 2 x 45° Elbow
 HC-10DL3-FD - 36" (914 mm) Length

BOOT TEES

BOOT TEE - BT

Boot Tee: Can be installed horizontally or vertically when connecting multiple appliances to a common vent or as a means to maintain the vent. A boot tee will provide less backpressure than a standard tee. If installed vertically, a drain cap is required, if installed horizontally a regular cap can be used. Use of a boot tee is equivalent to 15 feet of horizontal vent. A boot tee can be ordered with a body and mouth of different diameters. Includes factory installed silicone gaskets and two locking bands.



SINGLE WALL

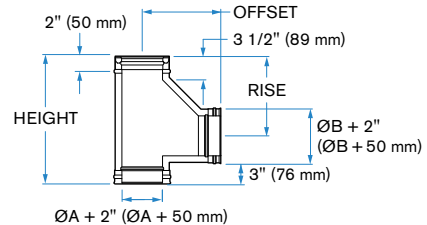
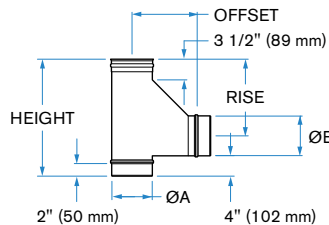


DOUBLE WALL



INSULATED

	SINGLE WALL			
Flue	AL29-4C		SS 444	
PRODUCT CODE	HE-ØBT-F		HE-ØBT-E	
	DOUBLE WALL		INSULATED	
Flue	AL29-4C	SS 444	AL29-4C	SS 444
Casing	SS 430	SS 430	SS 430	SS 430
Insulation	N/A	N/A	1 Inch	1 Inch
PRODUCT CODE	HE-ØDBT-FD	HE-ØDBT-ED	HE-ØIBT-FD	HE-ØIBT-ED



Ø	SINGLE WALL					
	Offset		Rise			
Inch	mm	Inch	mm	Inch	mm	
5	127	10 1/16	256	12 3/8	314	
6	152	10 9/16	268	12 7/8	327	
7	178	11 1/16	281	13 3/8	340	
8	203	11 9/16	294	13 7/8	352	
9	229	12 1/16	306	14 3/8	365	
10	254	12 9/16	319	14 7/8	378	
12	305	13 9/16	344	15 7/8	403	
14	356	14 9/16	370	16 7/8	429	
16	406	15 9/16	395	17 7/8	454	
18	457	16 9/16	421	18 7/8	479	
20	508	17 9/16	446	19 7/8	505	
22	559	18 9/16	471	20 7/8	530	
24	610	19 9/16	497	21 7/8	556	

SINGLE WALL MANIFOLD		
Height	Offset	Rise
Inch (mm)	Inch (mm)	Inch (mm)
ØB + 13 7/8 (ØB + 352 mm)	ØA/2 + 7 9/16 (ØA/2 + 192 mm)	ØB/2 + 9 7/8 (ØB/2 + 251 mm)

Ø	DOUBLE WALL / INSULATED					
	Offset		Rise			
Inch	mm	Inch	mm	Inch	mm	
5	127	12 1/16	306	10 3/8	264	
6	152	12 9/16	319	10 7/8	276	
7	178	13 1/16	332	11 3/8	289	
8	203	13 9/16	344	11 7/8	302	
9	229	14 1/16	357	12 3/8	314	
10	254	14 9/16	370	12 7/8	327	
12	305	15 9/16	395	13 7/8	352	
14	356	16 9/16	421	14 7/8	378	
16	406	17 9/16	446	15 7/8	403	
18	457	18 9/16	471	16 7/8	429	
20	508	19 9/16	497	17 7/8	454	
22	559	20 9/16	522	18 7/8	479	
24	610	21 9/16	548	19 7/8	505	

DOUBLE WALL / INSULATED MANIFOLD		
Height	Offset	Rise
Inch (mm)	Inch (mm)	Inch (mm)
ØB + 13 7/8 (ØB + 352 mm)	ØA/2 + 9 9/16 (ØA/2 + 230 mm)	ØB/2 + 7 7/8 (ØB/2 + 200 mm)

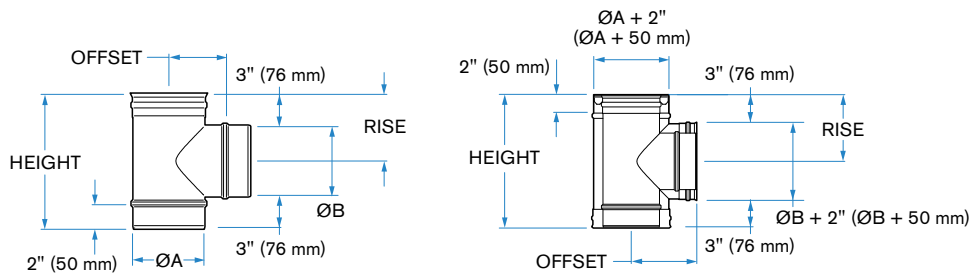
Notes: 1. All available flue diameter sizes are in inches. Flue diameters: 5", 6", 7", 8", 9", 10", 12", 14", 16", 18", 20", 22" and 24"
2. Manifold Boot Tee: Also available with smaller size mouth. Check with ICC for custom size boot tee's.

* Installed measurement.

TEE - T

Tee: Can be installed horizontally or vertically when connecting multiple appliances to a common vent. Use of a Tee will greatly increase backpressure and hinder condensate flow. A tee can be used when the appliance manufacturer recommends a barometric damper.

SINGLE WALL				
Flue	AL29-4C		SS 444	
PRODUCT CODE	HE-ØT-F		HE-ØT-E	
DOUBLE WALL				
Flue	AL29-4C	SS 444	AL29-4C	SS 444
Casing	SS 430	SS 430	SS 430	SS 430
Insulation	N/A	N/A	1 Inch	1 Inch



Ø	SINGLE WALL				
	Offset		Rise		
Inch	mm	Inch	mm	Inch	mm
5	127	3 1/2	89	5 1/2	140
6	152	4	102	6	152
7	178	4 1/2	114	6 1/2	165
8	203	4	102	7	178
9	229	5 1/2	140	7 1/2	191
10	254	6	152	8	203
12	305	7	178	9	229
14	356	8	203	10	254
16	406	9	229	11	279
18	457	10	254	12	305
20	508	11	279	13	330
22	559	12	305	14	356
24	610	13	330	15	381

SINGLE WALL MANIFOLD		
Height	Offset	Rise
Inch (mm)	Inch (mm)	Inch (mm)
ØB + 6 (ØB + 152 mm)	ØA/2 + 1 (ØA/2 + 25 mm)	ØB/2 + 3 (ØB/2 + 76 mm)

Ø	DOUBLE WALL / INSULATED				
	Offset		Rise		
Inch	mm	Inch	mm	Inch	mm
5	127	6 1/2	165	4 1/2	114
6	152	7	178	5	127
7	178	7 1/2	191	5 1/2	140
8	203	8	203	6	152
9	229	8 1/2	216	6 1/2	165
10	254	9	229	7	178
12	305	10	254	8	203
14	356	11	279	9	229
16	406	12	305	10	254
18	457	13	330	11	279
20	508	14	356	12	305
22	559	15	381	13	330
24	610	16	406	14	356

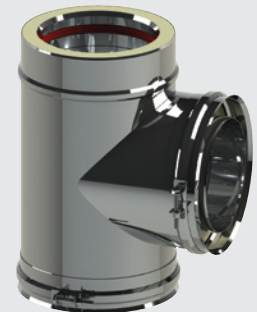
DOUBLE WALL / INSULATED MANIFOLD		
Height	Offset	Rise
Inch (mm)	Inch (mm)	Inch (mm)
ØB + 8 (ØB + 203 mm)	ØA/2 + 4 (ØA/2 + 102 mm)	ØB/2 + 2 (ØB/2 + 51 mm)



SINGLE WALL



DOUBLE WALL

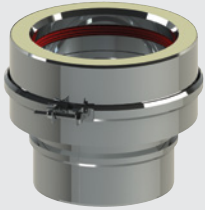


INSULATED

Notes: 1. All available flue diameter sizes are in inches. Flue diameters: 5", 6", 7", 8", 9", 10", 12", 14", 16", 18", 20", 22" and 24"
2. **Manifold Tee:** Also available with smaller size mouth. Check with ICC for custom size boot tee's.

* Installed measurement.

ADAPTERS

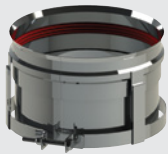
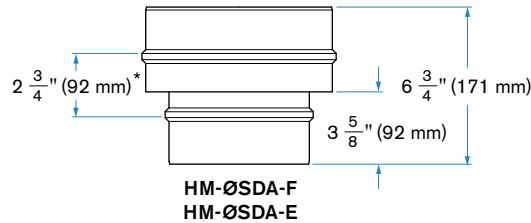


DOUBLE WALL

SINGLE TO DOUBLE WALL ADAPTER - SDA

Single to Double Wall Adapter: permits transition from a single wall system to a double wall or insulated system and can be used as an appliance adapter. Includes a factory installed silicone gasket and locking band.

	DOUBLE WALL	
Flue	AL29-4C	SS 444
Casing	SS 430	SS 430
Insulated	1 Inch	1 Inch
PRODUCT CODE	HM-ØSDA-F	HM-ØSDA-E

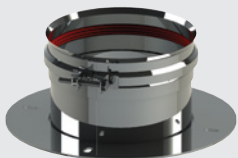
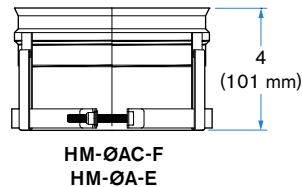


SINGLE WALL

SINGLE WALL ADAPTER WITH CLAMP - AC

Single Wall Adapter with Clamp: Installed on a boiler or furnace that has a sleeve connector. This adapter requires no fasteners to hold it in place ideal for appliances with a PVC starter.

	SINGLE WALL	
Flue	AL29-4C	SS 444
PRODUCT CODE	HM-ØAC-F	HM-ØAC-E

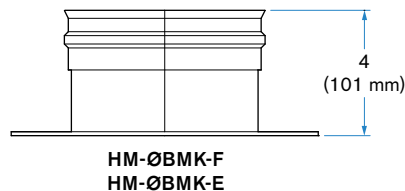


SINGLE WALL

ADAPTER AERCO BMK 750-1000 - BMK

Aerco BMK: Use this flanged adapter to easily connect to an Aerco BMK 750 – 1000.

	SINGLE WALL	
Flue	AL29-4C	SS 444
PRODUCT CODE	HM-ØBMK-F	HM-ØBMK-E



Only available in three sizes.
 6"Ø : Model 750, 1000 & 1500
 8"Ø : Model 2000, 2500 & 3000
 14"Ø : Model 6000

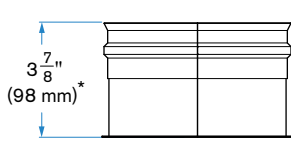
Note: All available flue diameter sizes are in inches. Flue diameters: 3", 4", 5", 6", 7", 8", 9", 10", 12", 14", 16", 18", 20", 22" and 24"

TEE CAPS

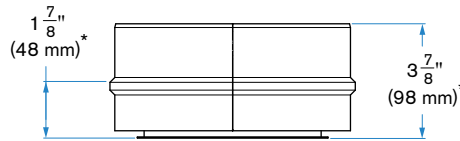
TEE CAP - TC

Tee Cap: Installed in the horizontal opening of a Boot Tee or a regular Tee to allow access for maintenance or inspection. Includes factory installed silicone gasket and locking band.

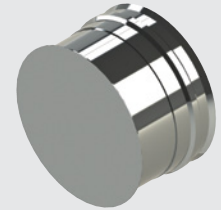
SINGLE WALL		
Flue	AL29-4C	SS 444
PRODUCT CODE	HE-ØTC-F	HE-ØTC-E
DOUBLE WALL		
Flue	AL29-4C	SS 444
Casing	SS 430	SS 430
PRODUCT CODE	HE-ØDTC-FD	HE-ØDTC-ED



HE-ØTC



HE-ØDTC



SINGLE WALL

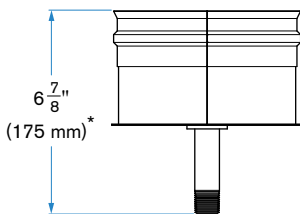


DOUBLE WALL

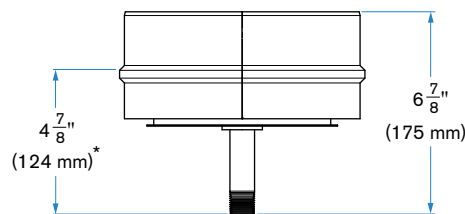
TEE CAP DRAIN - TD

Drain Tee Cap: Installed in the vertical opening at the base of a Boot Tee or regular Tee to allow condensate to drain from the system. Includes factory installed silicone gasket and locking band.

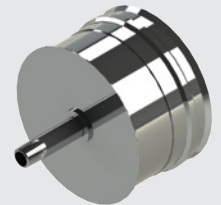
SINGLE WALL		
Flue	AL29-4C	SS 444
PRODUCT CODE	HE-ØTD-F	HE-ØTD-E
DOUBLE WALL		
Flue	AL29-4C	SS 444
Casing	SS 430	SS 430
PRODUCT CODE	HE-ØDTD-FD	HE-ØDTD-ED



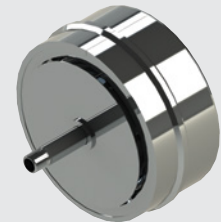
HE-ØTD



HE-ØDTD



SINGLE WALL



DOUBLE WALL

Notes: 1. All available flue diameter sizes are in inches. Flue diameters: 3", 4", 5", 6", 7", 8", 9", 10", 12", 14", 16", 18", 20", 22" and 24"
2. Tee Caps and Tee Cap Drains are not available with insulation.

* Installed measurement.

TERMINATIONS

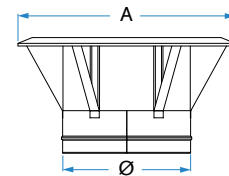


RAIN CAP - RC

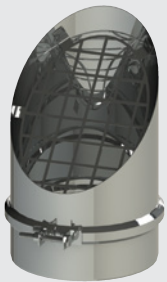
Rain Cap: Terminates a vertical system and prevents rainwater from entering. When installed on a double wall system, a double to single wall adapter (DSA) is required. Includes a locking band.

Flue	SINGLE WALL	
	AL29-4C	SS 444
PRODUCT CODE	HM-ØRC-F	HM-ØRC-E

Ø		A	
Inch	mm	Inch	mm
5	127	9	229
6	152	13	330
7	178	13	330
8	203	13	330
9	229	17	432
10	254	17	432
12	305	20 1/4	514
14	356	23 3/4	603
16	406	27 1/4	692
18	457	30 5/8	778
20	508	34	864
22	559	37 3/8	949
24	610	40 3/4	1035



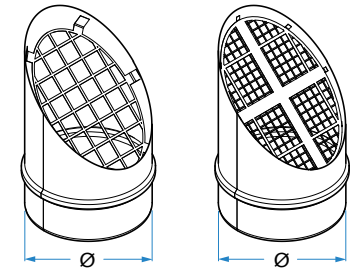
HM-ØRC-F
HM-ØRC-E



MITER CUT - MC

Miter Cut: Terminates a horizontal system and directs gasses further away from the building. When installed on a double wall system, a double wall closure ring (DCR) is required. Includes a locking band.

Flue	SINGLE WALL	
	AL29-4C	SS 444
PRODUCT CODE	HM-ØMC-F	HM-ØMC-E



5" (127 mm) Ø to
12" (305 mm) Ø

14" (356 mm) Ø to
24" (610 mm) Ø

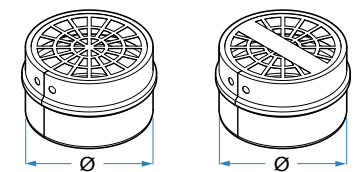
HM-ØMC-F
HM-ØMC-E



SCREEN CLOSURE RING - SCR

Screen Closure Ring: Terminates a horizontal vent system. When installed on a double wall system, a double wall closure ring (DCR) is required. Includes a locking band.

Flue	SINGLE WALL	
	AL29-4C	SS 444
PRODUCT CODE	HM-ØSCR-F	HM-ØSCR-E



5" (127 mm) Ø to
12" (305 mm) Ø

14" (356 mm) Ø to
24" (610 mm) Ø

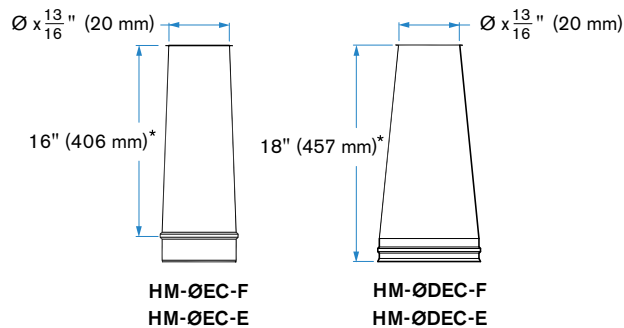
HM-ØSCR-F
HM-ØSCR-E

Note: All available flue diameter sizes are in inches. Flue diameters: 3", 4", 5", 6", 7", 8", 9", 10", 12", 14", 16", 18", 20", 22" and 24"

EXIT CONE - EC

Exit Cone: Increases the flue gas velocity of a positive pressure appliance that terminates vertically. Includes a locking band.

SINGLE WALL		
Flue	AL29-4C	SS 444
PRODUCT CODE	HM-ØEC-F	HM-ØEC-E
DOUBLE WALL		
Flue	AL29-4C	SS 444
Casing	SS 430	SS 430
PRODUCT CODE	HM-ØDEC-FD	HM-ØDEC-ED



SINGLE WALL

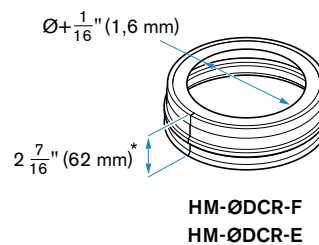


DOUBLE WALL

DOUBLE WALL CLOSURE RING - DCR

Double Wall Closure Ring: Required in conjunction with double wall systems that terminate horizontally. Includes a locking band.

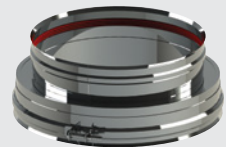
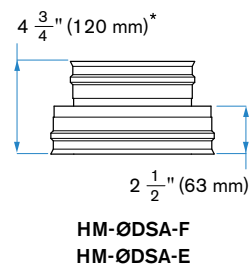
DOUBLE WALL		
Flue	AL29-4C	SS 444
PRODUCT CODE	HM-ØDCR-F	HM-ØDCR-E



DOUBLE TO SINGLE WALL ADAPTER - DSA

Double to Single Wall Adapter: Permits transition from a single wall system to a double wall system. Can also be used as an appliance adapter. Includes a factory installed silicone gasket and locking band.

DOUBLE WALL		
Flue	AL29-4C	SS 444
Casing	AL29-4C	SS 444
PRODUCT CODE	HM-ØDSA-F	HM-ØDSA-E



Notes: 1. All available flue diameter sizes are in inches. Flue diameters: 3", 4", 5", 6", 7", 8", 9", 10", 12", 14", 16", 18", 20", 22" and 24"
 2. Exit cones are not available with insulation.

* Installed measurement.

TAPPERED INCREASERS - SUPPORTS



SINGLE WALL



DOUBLE WALL



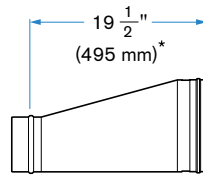
INSULATED



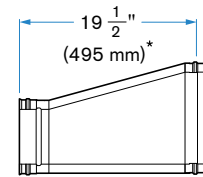
TAPERED INCREASER - IT

Tapered Increaser: Increases the diameter of the vent in the direction of the flue gasses. The eccentric shape is designed to promote proper drainage of condensate. Includes a factory installed silicone gasket and locking band.

	SINGLE WALL		DOUBLE WALL		INSULATED	
Flue	AL29-4C	SS 444	AL29-4C	SS 444	AL29-4C	SS 444
Casing	N/A	N/A	SS 430	SS 430	SS 430	SS 430
Insulation	N/A	N/A	N/A	N/A	1 Inch	1 Inch
PRODUCT CODE	HM-ØITØ-F	HM-ØITØ-E	HM-ØDITØ-FD	HM-ØDITØ-ED	HM-ØIITØ-FD	HM-ØIITØ-ED



HM-ØIT-F
HM-ØIT-E



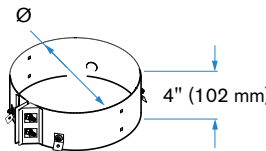
HM-ØDIT-FD
HM-ØDIT-ED

Note: Tapered increasers can be manufactured with up to six inches difference.

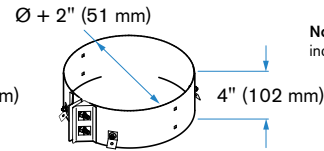
GUY BAND - GB

Guy Band: Required for extra stability when the vent system surpasses the roofline by more than 5 feet (1.5m). Maximum vent length above roof line using guy bands is 20 feet (6m). Maximum distance between guy bands is 10 feet (3m).

	SINGLE WALL	DOUBLE WALL
Material	SS 304 / Galvanized	SS 304 / Galvanized
PRODUCT CODE	HM-ØGB	HM-ØDGB



HM-ØGB



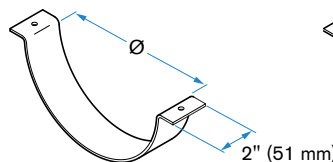
HM-ØDGB

Note: Guy wires are not included with guy bands.

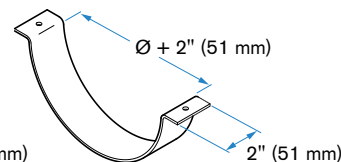
HORIZONTAL BAND - HB

Horizontal Band: Supports the vent system when it travels horizontally. For a single wall vent system the maximum distance between horizontal bands is 10 feet (3m). For a double wall vent system the maximum distance between Horizontal Bands is 6 feet (1.8m). Horizontal Bands are pre-punched for a 3/8" (9mm) threaded rod.

	SINGLE WALL	DOUBLE WALL
Material	Galvanized	Galvanized
PRODUCT CODE	HM-ØHB	HM-ØDHB



HM-ØHB



HM-ØDHB

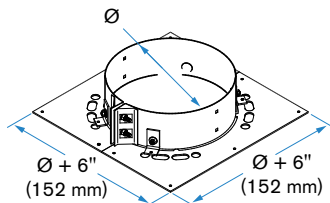
Note: 1. All available flue diameter sizes are in inches. Flue diameters: 3", 4", 5", 6", 7", 8", 9", 10", 12", 14", 16", 18", 20", 22" and 24"
* Installed measurement.

SUPPORTS

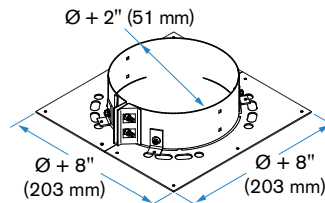
BASE SUPPORT - BS

Base Support: Supports a vent system vertically on top of a floor or roof assembly. For single wall, it is rated to support 50 feet of vent up to 10 inches in diameter and 30 feet of 12 inch diameter or larger. For double wall, it is rated to support 15 feet of vent in all diameters.

	SINGLE WALL	DOUBLE WALL / INSULATED
Material	SS 304 / Galvanized	SS 304 / Galvanized
PRODUCT CODE	HM-ØBS	HM-ØDBS



HM-ØBS



HM-ØDBS

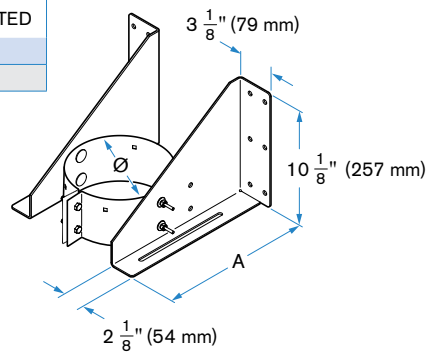


WALL SUPPORT - WS

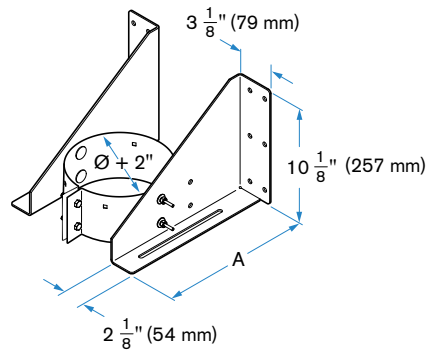
Wall Support: Supports a vent system vertically along a wall. For single wall, it is rated to support 50 feet of vent up to 10 inches in diameter and 30 feet of 12 inch diameter or larger. For double wall, it is rated to support 15 feet of vent in all diameters.

	SINGLE WALL	DOUBLE WALL / INSULATED
Material	SS 304	SS 304
PRODUCT CODE	HM-ØWS	HM-ØDWS

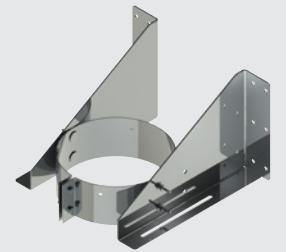
SINGLE / DOUBLE WALL			
Ø		A	
Inch	mm	Inch	mm
5	127	12 1/2	318
6	152	13	330
7	178	13 1/2	343
8	203	14	356
9	229	14 1/2	368
10	254	15	381
12	305	16	406
14	356	17	432
16	406	18	457
18	457	19	483
20	508	20	508
22	559	21	533
24	610	22	559



HM-ØWS



HM-ØDWS



Note: All available flue diameter sizes are in inches. Flue diameters: 3", 4", 5", 6", 7", 8", 9", 10", 12", 14", 16", 18", 20", 22" and 24"

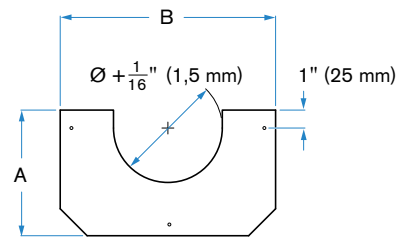
FIRE STOPS – STORM COLLARS



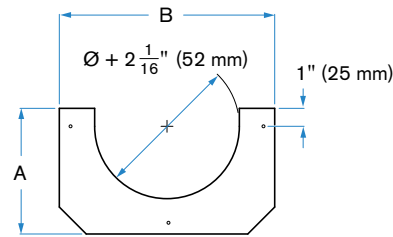
FIRESTOP - FS

Firestop: Required when a double wall or insulated vent penetrates a combustible floor or ceiling. The firestop can also be used with single wall vent or at walls when the construction is non-combustible.

	SINGLE WALL	DOUBLE WALL / INSULATED
Material	Galvanized	Galvanized
PRODUCT CODE	HM-ØFS	HM-ØDFS

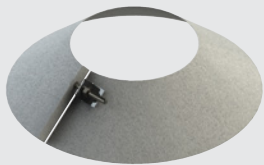


HM-ØFS



HM-ØDFS

Ø	SINGLE / DOUBLE WALL				
	A		B		
Inch	mm	Inch	mm	Inch	mm
5	127	6 1/2	165	11	279
6	152	7	178	12	305
7	178	7 1/2	191	13	330
8	203	8	203	14	356
9	229	8 1/2	216	15	381
10	254	9	229	16	406
12	305	10	254	18	457
14	356	11	279	20	508
16	406	12	305	22	559
18	457	13	330	24	610
20	508	14	356	26	660
22	559	15	381	28	711
24	610	16	406	30	762

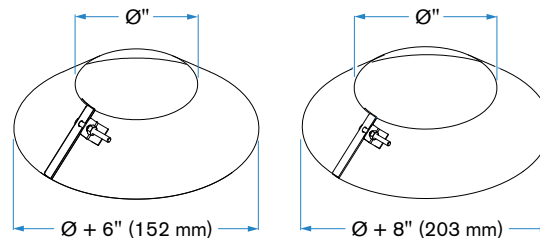


SINGLE WALL

STORM COLLAR - SC

Storm Collar: Creates a seal around the vent and flashing.

	SINGLE WALL	DOUBLE WALL / INSULATED
Material	Galvanized	Galvanized
PRODUCT CODE	HF-ØSC	HF-ØDSC



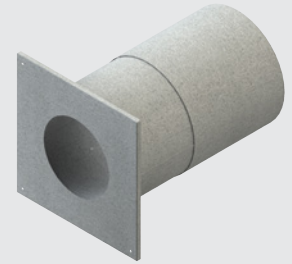
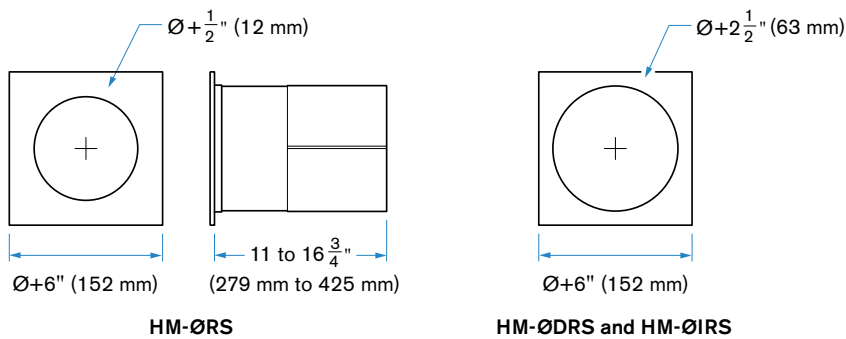
Note: All available flue diameter sizes are in inches. Flue diameters: 3", 4", 5", 6", 7", 8", 9", 10", 12", 14", 16", 18", 20", 22" and 24"

RADIATION SHIELDS

RADIATION SHIELD - RS

Radiation Shield: Required at every location where a single wall vent system penetrates a combustible floor or ceiling.

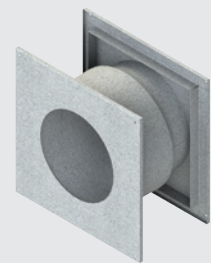
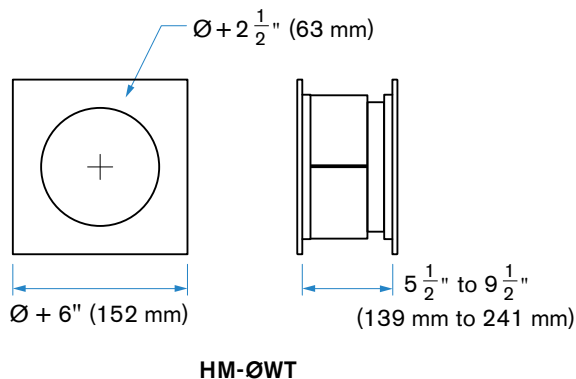
	SINGLE WALL
Flue	Galvanized
Casing	N/A
Insulation	N/A
PRODUCT CODE	HM-ØRS



WALL THIMBLE - WT

Wall Thimble: Required when the vent system penetrates a combustible wall. The length passing through the wall thimble must be insulated (ordered separately for single and double wall systems). The wall thimble is adjustable for wall thicknesses from $5 \frac{3}{4}''$ (146mm) to $10 \frac{1}{2}''$ (266 mm).

	SINGLE / DOUBLE WALL / INSULATED
Material	Galvanized
PRODUCT CODE	HM-ØWT



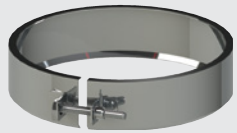
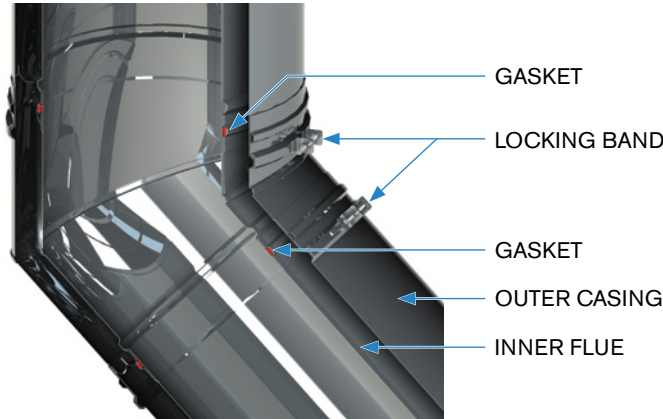
Note: All available flue diameter sizes are in inches. Flue diameters: 3", 4", 5", 6", 7", 8", 9", 10", 12", 14", 16", 18", 20", 22" and 24"

LOCKING BANDS



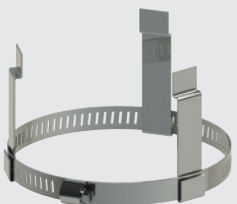
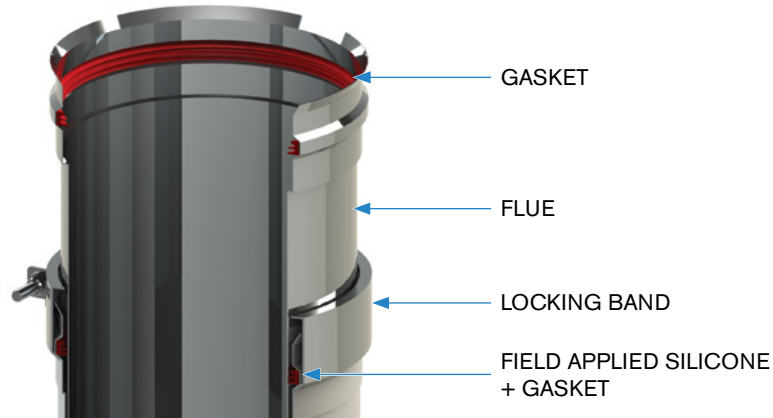
SINGLE/DOUBLE WALL

SINGLE AND DOUBLE WALL - LB



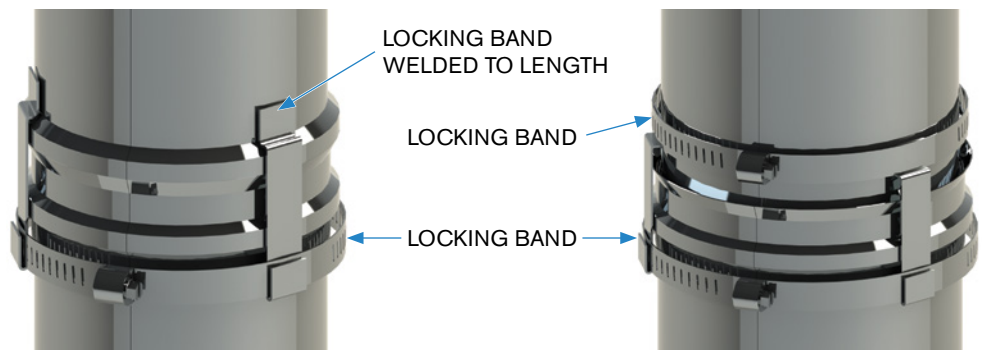
SINGLE WALL ADJUSTABLE

SINGLE WALL ADJUSTABLE- LBA



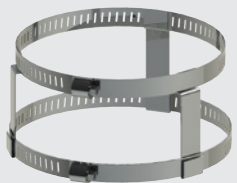
SINGLE WALL 3" & 4"

SINGLE WALL 3" & 4"



SINGLE WALL

SINGLE WALL ADJUSTABLE



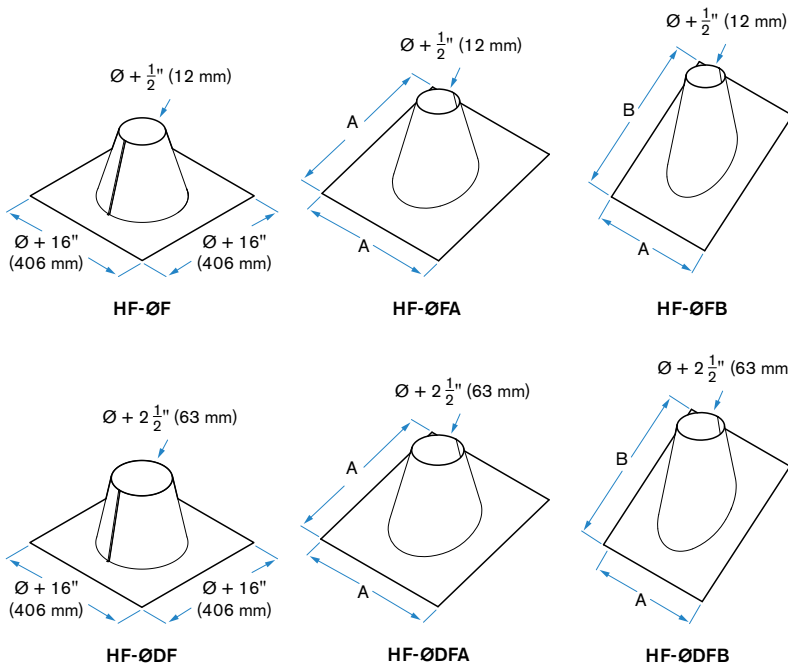
SINGLE WALL ADJUSTABLE 3" & 4"

FLASHINGS

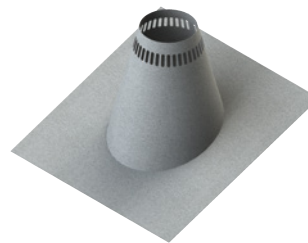
FLASHING - F, FA & FB

Flashing: Seals the roof where the vent system penetrates. A vented flashing is required when the roof is combustible. Storm collar is sold separately.

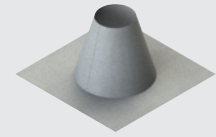
	SINGLE WALL	DOUBLE WALL / INSULATED
Material	Galvanized	Galvanized
PRODUCT CODE	HF-ØF	HF-ØDF
	HF-ØFA	HF-ØDFA
	HF-ØFB	HF-ØDFB
	HF-ØVF	HF-ØDVF
	HF-ØVFA	HF-ØDFVA
	HF-ØVFB	HF-ØDFVB



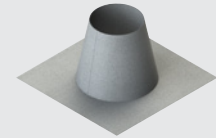
		SINGLE / DOUBLE WALL			
Ø		Ø + A		Ø + B	
Inch	mm	Inch	mm	Inch	mm
5	127	18	457	23	584
6	152	19	483	23	584
7	178	19	483	24	610
8	203	19	483	24	610
9	229	19	483	25	635
10	254	19	483	25	635
12	305	19	483	28	711
14	356	20	508	28	711
16	406	20	508	28	711
18	457	20	508	30	762
20	508	22	559	30	762
22	559	22	559	32	813
24	610	22	559	32	813



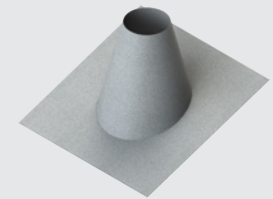
Example of a ventilated flashing



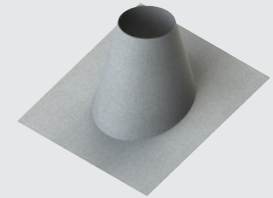
SINGLE WALL



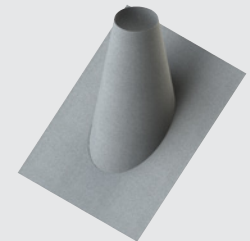
DOUBLE WALL



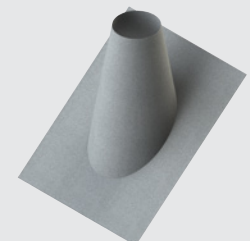
SINGLE WALL



DOUBLE WALL



SINGLE WALL



DOUBLE WALL

Note: All available flue diameter sizes are in inches. Flue diameters: 3", 4", 5", 6", 7", 8", 9", 10", 12", 14", 16", 18", 20", 22" and 24"

VIC CONDENSING VENT

QUOTATION REQUEST

Name: _____
 Date: _____
 Job: _____
 PC / ZIP: _____
 Page: _____

P: (450) 565-6336
 F: (450) 565-6519
 industrial@icc-rsf.com



SINGLE WALL	
<input type="checkbox"/>	F = AL29-4C
<input type="checkbox"/>	E = SS 444

DOUBLE WALL	
<input type="checkbox"/>	FD = AL29-4C / SS 430
<input type="checkbox"/>	ED = SS 444 / SS 430

INSULATED	
<input type="checkbox"/>	FD = AL29-4C / SS 430
<input type="checkbox"/>	ED = SS 444 / SS 430

NOTES: 1 Interior diameter (Ø) from 05" to 24". 2 For single digit Ø type 0 with Ø size: Example: 05 or 06.

INT. Ø	QTY	CODE	DESCRIPTION	INT. Ø	QTY	CODE	DESCRIPTION
LENGTHS				SUPPORTS			
		L1	12" Length			BS	Base Support
		L2	24" Length			WS	Wall Support
		L3	36" Length			GB	Guy Band
		L4	48" Length (SS 444 ONLY)			HB	Horizontal Band
		L6	6" Length	RAIN CAPS & ADAPTERS			
		LA1	Adjustable Length 12"			RC	Rain Cap
		LA2	Adjustable Length 24"			MC	Miter Cut Length
		LHD	Horizontal Drain Section			SCR	Screened Closure Ring
		IPS	Inline Test Port Section			DSA	Double to Single Wall Adapter
		IPSD	Vertical Inline Test Port Section with Drain			EC	Exit Cone
		DLV	Double Wall Ventilated Section			DCR	Double Wall Closure Ring
ELBOWS						SDA	Single to Double Wall Adapter
		E15	Elbow 15°			AC	Adapter Clamp
		E30	Elbow 30°			BMK	Adapter Clamp - Aereco Benchmark
		E45	Elbow 45°	MISCELLANEOUS			
		E90	Elbow 90°			FS	Firestop
TEES						FS2	Firestop (5" to 10")
		BT	Boot Tee			RS	Radiation Shield
		BT	Boot Tee (Manifold)			WT	Wall Thimble
		T	Tee 90°			RRS	Roof Radiation Shield
		T	Tee 90° (Manifold)			IT	Taper Increaser
		TC	Tee Cap	SPECIAL REQUEST			
		TD	Tee Cap, Drain				
FLASHINGS & STORM COLLARS							
		F	Flat flashing				
		FA	Flashing 1/12 - 7/12				
		FB	Flashing 8/12 - 12/12				
		VF	Ventilated Flat Flashing				
		VFA	Ventilated Flashing 1/12 - 7/12				
		VFB	Ventilated Flashing 8/12 - 12/12				
		SC	Storm Collar				

CONDENSING VENT WARRANTY

15 YEAR LIMITED WARRANTY

Industrial Chimney Company warrants to the original owner that model VIC Condensing Vent will be free of functional failure as a result of defects in materials or workmanship for a period of 15 years. This is a limited warranty subject to the following conditions.

- The system must be installed in accordance with ICC's written installation instructions and applicable building codes.
- The system must be inspected and maintained in accordance with ICC's written installation instructions.
- The system must only be used to vent appliances for which it is designed and certified.
- This warranty does not cover wear and tear that results from normal use, nor does it warranty systems installed in a corrosive environment.

REMEDIES UNDER THIS WARRANTY:

If a properly installed and maintained model VIC Condensing Vent System fails, the owner shall notify ICC in writing and shall not initiate repairs until instructed to do so by an authorized ICC representative. ICC will at its discretion repair, replace, or provide a refund for all defective parts.

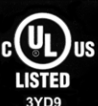
ICC is not responsible for the labor costs related to the inspection, removal and replacement of the vent system.

ICC is not responsible for the shipping costs.

ICC is not responsible for any special, consequential, or incidental damage incurred by the owner or its contractors.

Any parts replaced under this warranty will be covered for the unexpired term of the original warranty.

LISTING

	MODEL / MODÈLE VIC LISTED FACTORY-BUILT CONDENSING VENT ÉVENT À CONDENSATION PRÉFABRIQUÉ HOMOLOGUÉ	DIAMETER DIAMÈTRE	MAXIMUM APPLIANCE RATED TEMPERATURE TEMPÉRATURE NOMINALE MAXIMALE DE L'APPAREIL	FULLY ENCLOSED ENCLONNEMENT COMPLÈT		UNENCLOSED NON-ENCLONNÉ		
				VERT.	HORIZ.	VERT.	HORIZ.	
SINGLE WALL VENT MINIMUM CLEARANCES TO COMBUSTIBLE MATERIALS ÉVENT À PAROI SIMPLE - DÉGAGEMENTS MINIMAUX AUX MATÉRIEAUX COMBUSTIBLES								
SPECIAL GAS VENT TYPE BH CLASS I, II 245°C MAX. TESTED TO / TESTÉ SELON UL 1738 ULC-S636 F I L O W	<ul style="list-style-type: none"> • FOR USE WITH CATEGORY I, II, III & IV GAS APPLIANCES WITH CONTINUOUS FLUE GAS TEMPERATURE AS SHOWN IN TABLE BESIDE. • INSTALL IN ACCORDANCE WITH ICC INSTALLATION INSTRUCTIONS. • SUITABLE FOR INTERIOR OR EXTERIOR INSTALLATION. • POUR RACCORDEMENT À DES APPAREILS À GAZ DE CATÉGORIE I, II, III & IV ÉVACUANT DES GAZ DE COMBUSTION DE TEMPÉRATURE TEL QU'INDIQUÉ DANS LE TABLEAU DE DROITE. • INSTALLER SELON LES INSTRUCTIONS D'INSTALLATION D'ICC. • POUR INSTALLATION À L'INTÉRIEUR OU À L'EXTÉRIEUR. 	3-5" (76-127mm)	400°F (204°C)	3" (76mm)	N/A	N/A	1" (25mm)	
				480°F (249°C)			4" (102mm)	
				550°F (288°C)			6" (152mm)	
				300°F (149°C)				
				550°F (288°C)				
				550°F (288°C)				
		6-10" (152-254mm)					1" (25mm)	
		6-12" (152-305mm)					2" (50mm)	
		14" (356mm)					3" (76mm)	
		16-20" (406-508mm)					4" (102mm)	
		22-24" (559-610mm)					5" (127mm)	
DOUBLE WALL VENT MINIMUM CLEARANCES TO COMBUSTIBLE MATERIALS ÉVENT À PAROI DOUBLE - DÉGAGEMENTS MINIMAUX AUX MATÉRIEAUX COMBUSTIBLES								
		3-8" (76-203mm)					1" (25mm)	
		9-12" (229-305mm)	550°F (288°C)	1" (25mm)	N/A	1" (25mm)	2" (50mm)	
		14-18" (356-457mm)					3" (76mm)	
		20-24" (508-610mm)					4" (102mm)	
INSULATED DOUBLE WALL VENT CLEARANCES TO COMBUSTIBLE MATERIALS ÉVENT À PAROI DOUBLE ISOLÉ - DÉGAGEMENTS MINIMAUX AUX MATÉRIEAUX COMBUSTIBLES								
		3-24" (76-610mm)	550°F (288°C)	2" (50mm)	N/A		2" (50mm)	

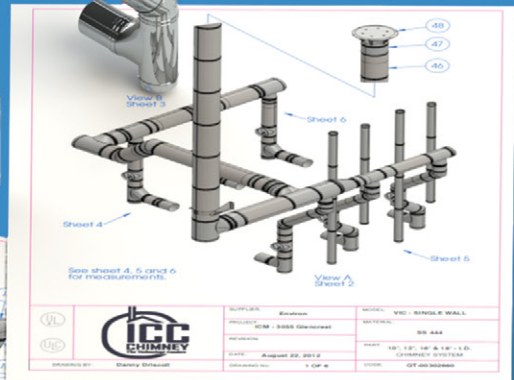
ICC Industrial Chimney Company Inc.
 ICC Compagnie de cheminées industrielles inc.
 St-Jérôme, Québec, Canada

Made in Canada
 Fabriqué au Canada

933034

VIC

CONDENSING VENT



ICC - INDUSTRIAL CHIMNEY COMPANY INC.
 400 J-F KENNEDY, ST-JEROME
 QUEBEC, CANADA, J7Y 4C7
 TEL.: 450 565-6336
 FAX: 450 565-6519
 EMAIL: INDUSTRIAL@ICC-RSF.COM

DISTRIBUTED BY