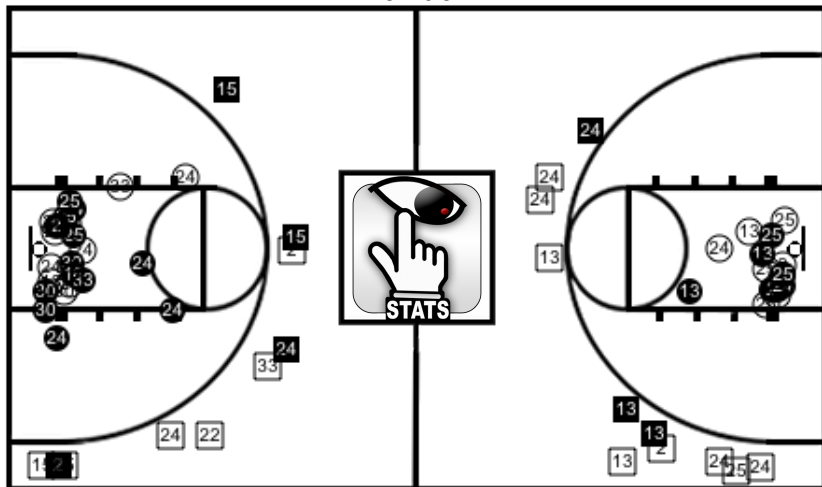


Home - Mandan

#	Name	Points	Total FG	%	2pt FG	%	3pt FG	%	Free Throws	%	Reb(O-D)DB	PF(T-F)	T	Ast	Blk	Stl	Def	Custor	Eff	Min
2	*Tyler Thilmony	13	4/8	50	3/5	60.0	1/3	33.3	4/5	80.0	4 (0-4)	4	0	1	0	2	1	0	15	28:09
13	*Jayce Lowman	20	5/9	55.6	3/5	60.0	2/4	50.0	8/11	72.7	2 (0-2)	3	2	2	0	1	1	0	16	32:37
15	Lucas Burgum	7	2/3	66.7	0/0	0	2/3	66.7	1/2	50.0	4 (0-4)	1	1	0	0	1	0	0	9	15:12
22	Seth Gangl	0	0/1	0	0/0	0	0/1	0	0/0	0	0	0	0	2	0	0	0	0	1	3:17
24	*Jacob Pierce	19	8/18	44.4	6/11	54.5	2/7	28.6	1/2	50.0	5 (1-4)	1	2	2	0	0	0	0	13	34:16
25	*Aaron Grubb	15	5/14	35.7	5/12	41.7	0/2	0	5/7	71.4	10 (4-6)	2	2	1	0	2	1	0	15	34:54
30	*Jonathan LaFleur	6	3/4	75	3/4	75.0	0/0	0	0/0	0	4 (1-3)	1	2	1	0	1	0	0	9	13:40
31	Nathan Gerding	0	0/0	0	0/0	0	0/0	0	0/0	0	1 (0-1)	0	0	0	0	0	0	0	1	2:53
33	Jaxon Duttonhefer	2	1/3	33.3	1/2	50.0	0/1	0	0/0	0	1 (1-0)	1	0	1	0	0	0	0	2	15:02
Total		82	28/60	46.7	21/39	53.8	7/21	33.3	19/27	70.4	32 (7-24)1	13	9	10	0	7	3	0	81	0:00

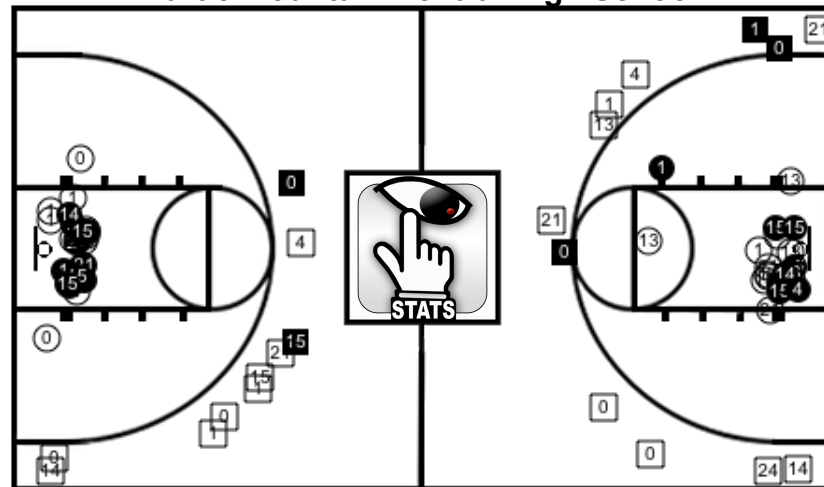
Mandan



	1	2
H	39	43
A	37	41

Lead Changes: 16
Game Tied: 7
Away Largest Lead: 4
Home Largest Scoring Streak: 6
Home Longest Scoring Streak: 10

Turtle Mountain Central High School

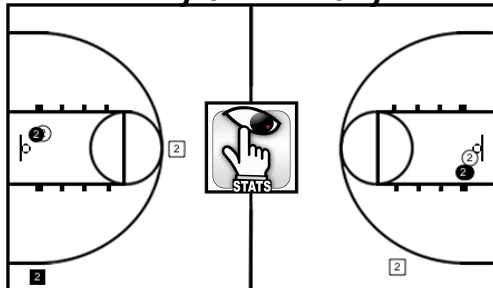


Away - Turtle Mountain Central High School

#	Name	Points	Total FG	%	2pt FG	%	3pt FG	%	Free Throws	%	Reb(O-D)DB	PF(T-F)	T	Ast	Blk	Stl	Def	Custor	Eff	Min
0	*Houston Davis	17	6/12	50	3/5	60.0	3/7	42.9	2/3	66.7	5 (0-5)	3	0	0	0	1	0	0	16	33:54
1	*James Keplin	18	7/17	41.2	6/13	46.2	1/4	25.0	3/4	75.0	2 (1-1)	4	2	1	0	0	0	0	8	32:05
4	Blue Kellogg	2	1/4	25	1/2	50.0	0/2	0	0/2	0	0	1	0	0	0	0	0	0	-3	7:33
13	Parker Walette	7	3/7	42.9	3/6	50.0	0/1	0	1/1	100.0	3 (2-1)	2	0	0	0	0	0	0	6	14:44
14	*Riley McCloud	4	2/5	40	2/3	66.7	0/2	0	0/0	0	4 (2-2)	2	1	0	0	0	0	0	4	21:39
15	*Tristin Davis	24	10/14	71.4	9/12	75.0	1/2	50.0	3/4	75.0	6 (4-2)	3	3	2	0	2	1	0	26	32:22
21	*Wyatt Enno	6	3/10	30	3/7	42.9	0/3	0	0/0	0	10 (1-9)	5	3	3	1	1	1	0	11	31:07
24	Tanner Monette	0	0/2	0	0/1	0	0/1	0	0/0	0	1 (1-0)	1	0	0	0	1	0	0	0	6:36
Total		78	32/71	45.1	27/49	55.1	5/22	22.7	9/14	64.3	34 (11-20)3	21	9	6	1	5	3	0	68	0:00

Mandan - Individual Player Charts

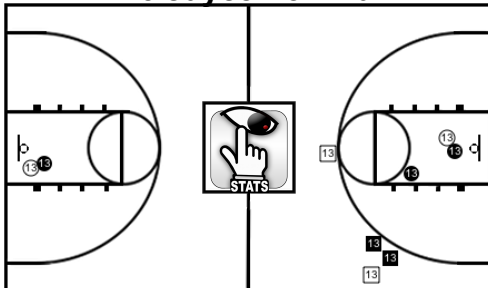
#2 Tyler Thilmony



Points: 13
Total FG: 4/8 50.0%
2PT: 3/5 60.0%
3PT: 1/3 33.3%
FT: 4/5 80.0%
Fouls: 4
Efficiency: 15
Minutes: 10:14

Rebounds: 4 (O:0 D:4)
Assists: 1
Steals: 2
Blocks: 0
Deflects: 1
Turnovers: 0
Custom St: 0

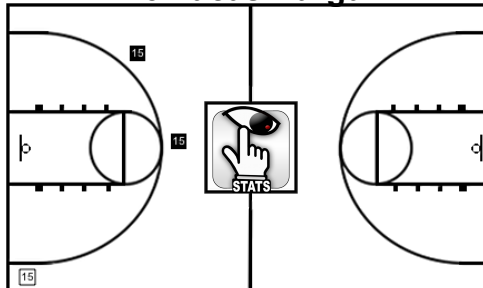
#13 Jayce Lowman



Points: 20
Total FG: 5/9 55.6%
2PT: 3/5 60.0%
3PT: 2/4 50.0%
FT: 8/11 72.7%
Fouls: 3
Efficiency: 16
Minutes: 29:16

Rebounds: 2 (O:0 D:2)
Assists: 2
Steals: 1
Blocks: 0
Deflects: 1
Turnovers: 2
Custom St: 0

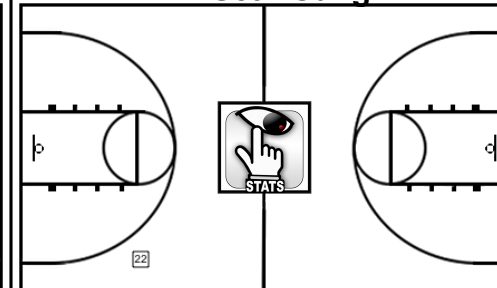
#15 Lucas Burgum



Points: 7
Total FG: 2/3 66.7%
2PT: 0/0 0%
3PT: 2/3 66.7%
FT: 1/2 50.0%
Fouls: 1
Efficiency: 9
Minutes: 15:07

Rebounds: 4 (O:0 D:4)
Assists: 0
Steals: 1
Blocks: 0
Deflects: 0
Turnovers: 1
Custom St: 0

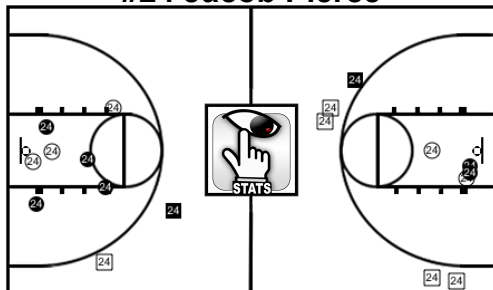
#22 Seth Gangl



Points: 0
Total FG: 0/1 0%
2PT: 0/0 0%
3PT: 0/1 0%
FT: 0/0 0%
Fouls: 0
Efficiency: 1
Minutes: 3:17

Rebounds: 0 (O:0 D:0)
Assists: 2
Steals: 0
Blocks: 0
Deflects: 0
Turnovers: 0
Custom St: 0

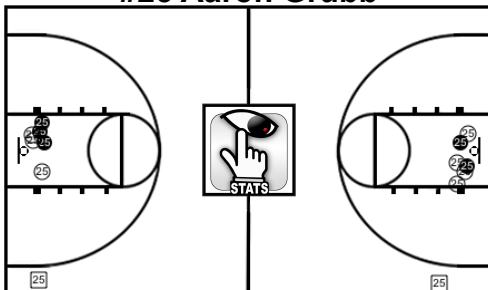
#24 Jacob Pierce



Points: 19
Total FG: 8/18 44.4%
2PT: 6/11 54.5%
3PT: 2/7 28.6%
FT: 1/2 50.0%
Fouls: 1
Efficiency: 13
Minutes: 34:16

Rebounds: 5 (O:1 D:4)
Assists: 2
Steals: 0
Blocks: 0
Deflects: 0
Turnovers: 2
Custom St: 0

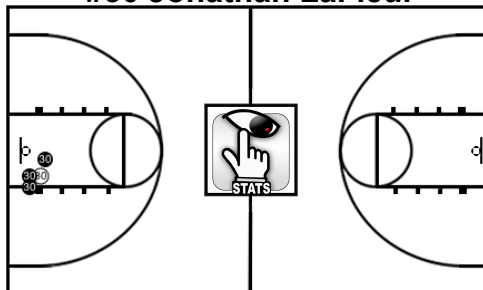
#25 Aaron Grubb



Points: 15
Total FG: 5/14 35.7%
2PT: 5/12 41.7%
3PT: 0/2 0%
FT: 5/7 71.4%
Fouls: 2
Efficiency: 15
Minutes: 12:25

Rebounds: 10 (O:4 D:6)
Assists: 1
Steals: 2
Blocks: 0
Deflects: 1
Turnovers: 2
Custom St: 0

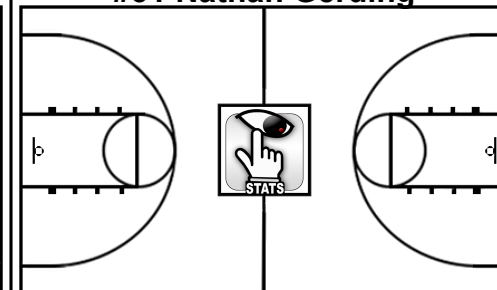
#30 Jonathan LaFleur



Points: 6
Total FG: 3/4 75.0%
2PT: 3/4 75.0%
3PT: 0/0 0%
FT: 0/0 0%
Fouls: 1
Efficiency: 9
Minutes: 13:40

Rebounds: 4 (O:1 D:3)
Assists: 1
Steals: 1
Blocks: 0
Deflects: 0
Turnovers: 2
Custom St: 0

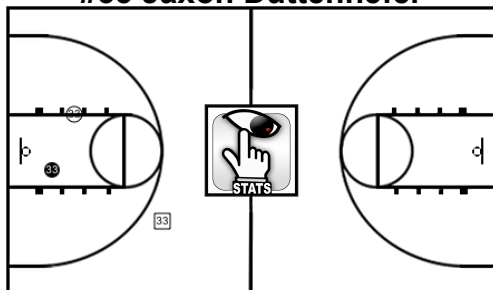
#31 Nathan Gerding



Points: 0
Total FG: 0/0 0%
2PT: 0/0 0%
3PT: 0/0 0%
FT: 0/0 0%
Fouls: 0
Efficiency: 1
Minutes: 2:52

Rebounds: 1 (O:0 D:1)
Assists: 0
Steals: 0
Blocks: 0
Deflects: 0
Turnovers: 0
Custom St: 0

#33 Jaxon Duttenhefer

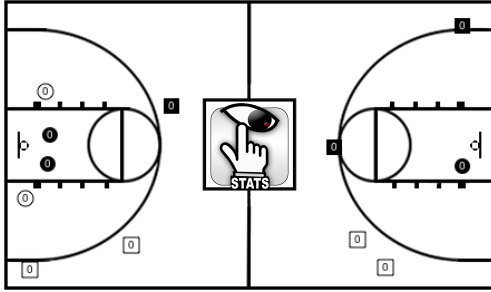


Points: 2
Total FG: 1/3 33.3%
2PT: 1/2 50.0%
3PT: 0/1 0%
FT: 0/0 0%
Fouls: 1
Efficiency: 2
Minutes: 15:02

Rebounds: 1 (O:1 D:0)
Assists: 1
Steals: 0
Blocks: 0
Deflects: 0
Turnovers: 0
Custom St: 0

Turtle Mountain Central High School - Individual Player Charts

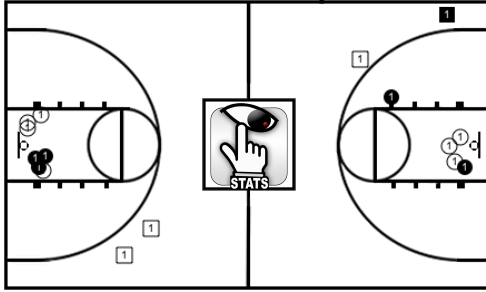
#0 Houston Davis



Points: 17
Total FG: 6/12 50.0%
2PT: 3/5 60.0%
3PT: 3/7 42.9%
FT: 2/3 66.7%
Fouls: 3
Efficiency: 16
Minutes: 9:08

Rebounds: 5 (O:0 D:5)
Assists: 0
Steals: 1
Blocks: 0
Deflects: 1
Turnovers: 0
Custom St: 0

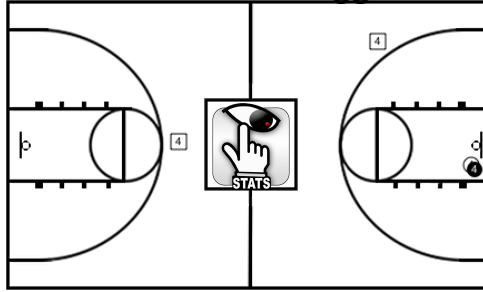
#1 James Keplin



Points: 18
Total FG: 7/17 41.2%
2PT: 6/13 46.2%
3PT: 1/4 25.0%
FT: 3/4 75.0%
Fouls: 4
Efficiency: 8
Minutes: 14:05

Rebounds: 2 (O:1 D:1)
Assists: 1
Steals: 0
Blocks: 0
Deflects: 0
Turnovers: 2
Custom St: 0

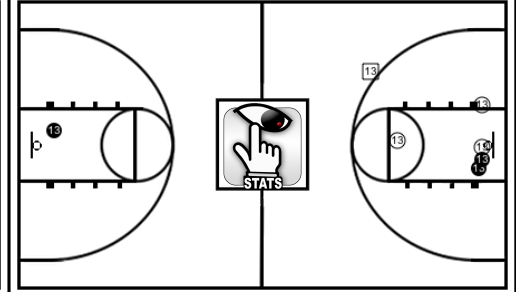
#4 Blue Kellogg



Points: 2
Total FG: 1/4 25.0%
2PT: 1/2 50.0%
3PT: 0/2 0%
FT: 0/2 0%
Fouls: 1
Efficiency: -3
Minutes: 7:33

Rebounds: 0 (O:0 D:0)
Assists: 0
Steals: 0
Blocks: 0
Deflects: 0
Turnovers: 0
Custom St: 0

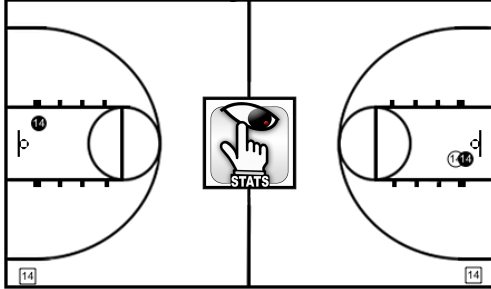
#13 Parker Wallete



Points: 7
Total FG: 3/7 42.9%
2PT: 3/6 50.0%
3PT: 0/1 0%
FT: 1/1 100%
Fouls: 2
Efficiency: 6
Minutes: 13:27

Rebounds: 3 (O:2 D:1)
Assists: 0
Steals: 0
Blocks: 0
Deflects: 0
Turnovers: 0
Custom St: 0

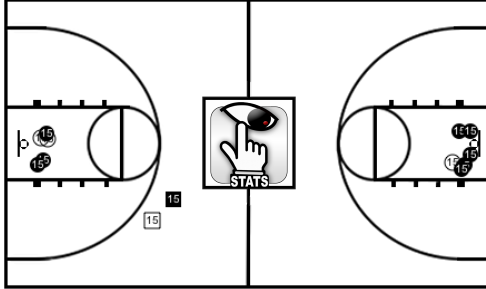
#14 Riley McCloud



Points: 4
Total FG: 2/5 40.0%
2PT: 2/3 66.7%
3PT: 0/2 0%
FT: 0/0 0%
Fouls: 2
Efficiency: 4
Minutes: 14:55

Rebounds: 4 (O:2 D:2)
Assists: 0
Steals: 0
Blocks: 0
Deflects: 0
Turnovers: 1
Custom St: 0

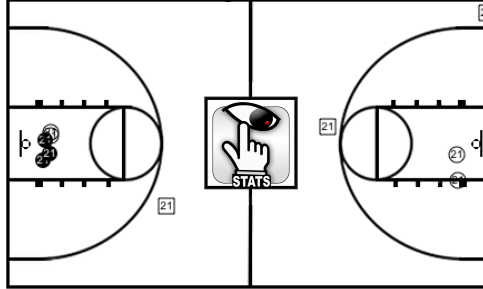
#15 Tristin Davis



Points: 24
Total FG: 10/14 71.4%
2PT: 9/12 75.0%
3PT: 1/2 50.0%
FT: 3/4 75.0%
Fouls: 3
Efficiency: 26
Minutes: 20:06

Rebounds: 6 (O:4 D:2)
Assists: 2
Steals: 2
Blocks: 0
Deflects: 1
Turnovers: 3
Custom St: 0

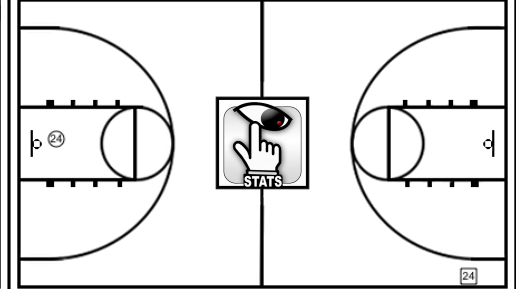
#21 Wyatt Enno



Points: 6
Total FG: 3/10 30.0%
2PT: 3/7 42.9%
3PT: 0/3 0%
FT: 0/0 0%
Fouls: 5
Efficiency: 11
Minutes: 31:07

Rebounds: 10 (O:1 D:9)
Assists: 3
Steals: 1
Blocks: 1
Deflects: 1
Turnovers: 3
Custom St: 0

#24 Tanner Monette



Points: 0
Total FG: 0/2 0%
2PT: 0/1 0%
3PT: 0/1 0%
FT: 0/0 0%
Fouls: 1
Efficiency: 0
Minutes: 6:36

Rebounds: 1 (O:1 D:0)
Assists: 0
Steals: 1
Blocks: 0
Deflects: 0
Turnovers: 0
Custom St: 0

Game Log

Period - 1			
Score	Time	Stat	Player
18:00 - P1	Starter		#2 Tyler Thilmony
18:00 - P1	Subbed In		#2 Tyler Thilmony
18:00 - P1	Starter		#13 Jayce Lowman
18:00 - P1	Subbed In		#13 Jayce Lowman
18:00 - P1	Starter		#24 Jacob Pierce
18:00 - P1	Subbed In		#24 Jacob Pierce
18:00 - P1	Starter		#25 Aaron Grubb
18:00 - P1	Subbed In		#25 Aaron Grubb
18:00 - P1	Starter		#30 Jonathan LaFleur
18:00 - P1	Subbed In		#30 Jonathan LaFleur
18:00 - P1	Starter		#0 Houston Davis
18:00 - P1	Subbed In		#0 Houston Davis
18:00 - P1	Starter		#1 James Keplin
18:00 - P1	Subbed In		#1 James Keplin
18:00 - P1	Starter		#14 Riley McCloud
18:00 - P1	Subbed In		#14 Riley McCloud
18:00 - P1	Starter		#15 Tristin Davis
18:00 - P1	Subbed In		#15 Tristin Davis
18:00 - P1	Starter		#21 Wyatt Enno
18:00 - P1	Subbed In		#21 Wyatt Enno
18:00 - P1	Gains Ball Possession		Mandan
0 - 3 17:53 - P1	Made 3pt Shot		#0 Houston Davis
17:52 - P1	Gains Ball Possession		Turtle Mountain Central High Schoc
2 - 3 17:27 - P1	Made 2pt Shot		#24 Jacob Pierce
17:19 - P1	Steal		#30 Jonathan LaFleur
17:18 - P1	Turnover		#15 Tristin Davis
17:12 - P1	Missed 2pt Shot		#2 Tyler Thilmony
17:12 - P1	Offensive Rebound		#25 Aaron Grubb
4 - 3 17:09 - P1	Made 2pt Shot		#25 Aaron Grubb
17:09 - P1	Deflection		#2 Tyler Thilmony
16:51 - P1	Missed 2pt Shot		#1 James Keplin
16:51 - P1	Offensive Rebound		#15 Tristin Davis
4 - 5 16:49 - P1	Made 2pt Shot		#15 Tristin Davis
6 - 5 16:34 - P1	Made 2pt Shot		#25 Aaron Grubb
16:26 - P1	Assist		#24 Jacob Pierce
6 - 7 16:11 - P1	Made 2pt Shot		#15 Tristin Davis
16:10 - P1	Assist		#21 Wyatt Enno
15:54 - P1	Missed 2pt Shot		#30 Jonathan LaFleur
15:53 - P1	Defensive Rebound		#21 Wyatt Enno
15:51 - P1	Foul		#30 Jonathan LaFleur
6 - 9 15:51 - P1	Made 2pt Shot		#15 Tristin Davis
8 - 9 15:51 - P1	Made 2pt Shot		#30 Jonathan LaFleur
15:29 - P1	Missed 2pt Shot		#21 Wyatt Enno
15:29 - P1	Offensive Rebound		#1 James Keplin
15:29 - P1	Missed 2pt Shot		#1 James Keplin
15:23 - P1	Turnover		#14 Riley McCloud
15:08 - P1	Missed 2pt Shot		#24 Jacob Pierce
15:08 - P1	Defensive Rebound		#14 Riley McCloud
14:59 - P1	Missed 3pt Shot		#0 Houston Davis
14:58 - P1	Defensive Rebound		#24 Jacob Pierce
14:45 - P1	Missed 3pt Shot		#24 Jacob Pierce
14:45 - P1	Dead Ball Rebound		Mandan
14:45 - P1	Subbed Out		#30 Jonathan LaFleur
14:45 - P1	Subbed In		#33 Jaxon Duttenhefer
14:38 - P1	Turnover		#13 Jayce Lowman
14:17 - P1	Missed 2pt Shot		#21 Wyatt Enno
14:16 - P1	Defensive Rebound		#2 Tyler Thilmony
10 - 9 14:08 - P1	Made 2pt Shot		#24 Jacob Pierce
13:59 - P1	Steal		#2 Tyler Thilmony
13:58 - P1	Turnover		#15 Tristin Davis
12 - 9 13:46 - P1	Made 2pt Shot		#25 Aaron Grubb
13:43 - P1	Steal		#25 Aaron Grubb
13:42 - P1	Turnover		#15 Tristin Davis
14 - 9 13:37 - P1	Made 2pt Shot		#2 Tyler Thilmony
13:37 - P1	Assist		#25 Aaron Grubb
13:23 - P1	Steal		#13 Jayce Lowman
13:23 - P1	Turnover		#1 James Keplin
16 - 9 13:20 - P1	Made 2pt Shot		#13 Jayce Lowman
13:19 - P1	Timeout - Full		Turtle Mountain Central High Schoc
13:05 - P1	Missed 3pt Shot		#14 Riley McCloud
13:05 - P1	Offensive Rebound		#15 Tristin Davis
13:03 - P1	Missed 2pt Shot		#15 Tristin Davis
13:03 - P1	Offensive Rebound		#15 Tristin Davis
16 - 11 12:58 - P1	Made 2pt Shot		#1 James Keplin
12:58 - P1	Foul		#2 Tyler Thilmony
16 - 12 12:58 - P1	Made Free Throw		#1 James Keplin
12:58 - P1	Subbed Out		#14 Riley McCloud
12:58 - P1	Subbed In		#13 Parker Walleette

12:41 - P1	Foul		#15 Tristin Davis
12:41 - P1	Missed 2pt Shot		#25 Aaron Grubb
12:41 - P1	Defensive Rebound		#21 Wyatt Enno
12:34 - P1	Steal		#2 Tyler Thilmony
12:33 - P1	Turnover		#21 Wyatt Enno
18 - 12 12:28 - P1	Made 2pt Shot		#24 Jacob Pierce
11:57 - P1	Missed 3pt Shot		#21 Wyatt Enno
11:57 - P1	Offensive Rebound		#13 Parker Walleette
11:55 - P1	Missed 2pt Shot		#13 Parker Walleette
11:55 - P1	Defensive Rebound		#25 Aaron Grubb
21 - 12 11:44 - P1	Made 3pt Shot		#2 Tyler Thilmony
11:44 - P1	Assist		#33 Jaxon Duttenhefer
11:30 - P1	Offensive Foul		#1 James Keplin
11:30 - P1	Took A Charge		#2 Tyler Thilmony
11:30 - P1	Subbed Out		#2 Tyler Thilmony
11:30 - P1	Subbed In		#22 Seth Gangl
11:10 - P1	Steal		#21 Wyatt Enno
11:07 - P1	Turnover		#24 Jacob Pierce
21 - 14 10:42 - P1	Made 2pt Shot		#13 Parker Walleette
10:41 - P1	Assist		#21 Wyatt Enno
24 - 14 10:29 - P1	Made 3pt Shot		#24 Jacob Pierce
10:28 - P1	Assist		#22 Seth Gangl
24 - 16 10:15 - P1	Made 2pt Shot		#1 James Keplin
9:56 - P1	Missed 3pt Shot		#22 Seth Gangl
9:56 - P1	Defensive Rebound		#0 Houston Davis
24 - 19 9:47 - P1	Made 3pt Shot		#1 James Keplin
9:46 - P1	Assist		#21 Wyatt Enno
9:22 - P1	Missed 3pt Shot		#33 Jaxon Duttenhefer
9:22 - P1	Defensive Rebound		#0 Houston Davis
9:12 - P1	Steal		#25 Aaron Grubb
26 - 19 9:08 - P1	Made 2pt Shot		#33 Jaxon Duttenhefer
9:07 - P1	Assist		#24 Jacob Pierce
8:55 - P1	Missed 3pt Shot		#1 James Keplin
8:54 - P1	Defensive Rebound		#25 Aaron Grubb
8:52 - P1	Foul		#1 James Keplin
8:52 - P1	Subbed Out		#22 Seth Gangl
8:52 - P1	Subbed In		#2 Tyler Thilmony
8:52 - P1	Subbed Out		#33 Jaxon Duttenhefer
8:52 - P1	Subbed In		#30 Jonathan LaFleur
8:52 - P1	Subbed Out		#0 Houston Davis
8:52 - P1	Subbed In		#4 Blue Kellogg
8:52 - P1	Subbed Out		#1 James Keplin
8:52 - P1	Subbed In		#24 Tanner Monette
28 - 19 8:41 - P1	Made 2pt Shot		#30 Jonathan LaFleur
8:39 - P1	Assist		#13 Jayce Lowman
8:29 - P1	Missed 3pt Shot		#13 Parker Walleette
8:29 - P1	Defensive Rebound		#24 Jacob Pierce
8:21 - P1	Missed 2pt Shot		#25 Aaron Grubb
8:21 - P1	Defensive Rebound		#13 Parker Walleette
8:13 - P1	Foul		#13 Jayce Lowman
8:13 - P1	Missed 2pt Shot		#13 Parker Walleette
8:06 - P1	Subbed Out		#13 Jayce Lowman
8:06 - P1	Subbed In		#15 Lucas Burgum
7:43 - P1	Missed 3pt Shot		#4 Blue Kellogg
7:43 - P1	Defensive Rebound		#25 Aaron Grubb
7:31 - P1	Steal		#15 Tristin Davis
7:31 - P1	Turnover		#30 Jonathan LaFleur
28 - 21 7:21 - P1	Made 2pt Shot		#13 Parker Walleette
7:21 - P1	Assist		#15 Tristin Davis
7:00 - P1	Missed 3pt Shot		#2 Tyler Thilmony
7:00 - P1	Dead Ball Rebound		Turtle Mountain Central High Schoc
6:46 - P1	Subbed Out		#24 Jacob Pierce
6:46 - P1	Subbed In		#13 Jayce Lowman
6:46 - P1	Subbed Out		#13 Parker Walleette
6:46 - P1	Subbed In		#0 Houston Davis
6:46 - P1	Subbed Out		#21 Wyatt Enno
6:46 - P1	Subbed In		#1 James Keplin
6:46 - P1	Subbed Out		#15 Tristin Davis
6:46 - P1	Subbed In		#14 Riley McCloud
6:31 - P1	Foul		#25 Aaron Grubb
6:31 - P1	Missed 2pt Shot		#4 Blue Kellogg
6:22 - P1	Missed Free Throw		#4 Blue Kellogg
6:21 - P1	Missed Free Throw		#4 Blue Kellogg
6:21 - P1	Defensive Rebound		#25 Aaron Grubb
31 - 21 6:03 - P1	Made 3pt Shot		#15 Lucas Burgum
6:03 - P1	Assist		#2 Tyler Thilmony
5:45 - P1	Missed 3pt Shot		#24 Tanner Monette
5:44 - P1	Defensive Rebound		#25 Aaron Grubb
5:35 - P1	Foul		#2 Tyler Thilmony
5:35 - P1	Subbed Out		#25 Aaron Grubb
5:35 - P1	Subbed In		#24 Jacob Pierce

5:35 - P1	Subbed Out		#4 Blue Kellogg
5:35 - P1	Subbed In		#13 Parker Walleette
5:35 - P1	Subbed Out		#24 Tanner Monette
5:35 - P1	Subbed In		#15 Tristin Davis
5:35 - P1	Subbed Out		#14 Riley McCloud
5:35 - P1	Subbed In		#21 Wyatt Enno
31 - 23 5:24 - P1	Made 2pt Shot		#15 Tristin Davis
5:08 - P1	Subbed Out		#2 Tyler Thilmony
5:08 - P1	Subbed In		#22 Seth Gangl
34 - 23 5:04 - P1	Made 3pt Shot		#15 Lucas Burgum
5:04 - P1	Assist		#22 Seth Gangl
34 - 26 4:52 - P1	Made 3pt Shot		#0 Houston Davis
36 - 26 4:41 - P1	Made 2pt Shot		#30 Jonathan LaFleur
4:29 - P1	Deflection		#13 Jayce Lowman
4:29 - P1	Subbed Out		#22 Seth Gangl
4:29 - P1	Subbed In		#25 Aaron Grubb
4:14 - P1	Missed 2pt Shot		#13 Parker Walleette
4:14 - P1	Defensive Rebound		#13 Jayce Lowman
4:03 - P1	Missed 3pt Shot		#25 Aaron Grubb
4:02 - P1	Defensive Rebound		#15 Tristin Davis
36 - 28 3:57 - P1	Made 2pt Shot		#0 Houston Davis
3:57 - P1	Assist		#15 Tristin Davis
3:57 - P1	Foul		#15 Lucas Burgum
3:57 - P1	Subbed Out		#30 Jonathan LaFleur
3:57 - P1	Subbed In		#33 Jaxon Duttenhefer
36 - 29 3:57 - P1	Made Free Throw		#0 Houston Davis
3:57 - P1	Turnover		#15 Lucas Burgum
3:47 - P1	Timeout - Half		Turtle Mountain Central High Schoc
3:08 - P1	Missed 2pt Shot		#1 James Keplin
3:08 - P1	Defensive Rebound		#15 Lucas Burgum
3:08 - P1	Missed 3pt Shot		#15 Lucas Burgum
3:08 - P1	Defensive Rebound		#1 James Keplin
3:08 - P1	Missed 3pt Shot		#21 Wyatt Enno
3:08 - P1	Defensive Rebound		#24 Jacob Pierce
3:00 - P1	Foul		#13 Parker Walleette
3:00 - P1	Subbed Out		#13 Parker Walleette
3:00 - P1	Subbed In		#14 Riley McCloud
2:44 - P1	Missed 2pt Shot		#13 Jayce Lowman
2:44 - P1	Offensive Rebound		#25 Aaron Grubb
2:42 - P1	Missed 2pt Shot		#25 Aaron Grubb
2:41 - P1	Foul		#0 Houston Davis
2:41 - P1	Missed Free Throw		#25 Aaron Grubb
2:41 - P1	Subbed Out		#15 Lucas Burgum
2:41 - P1	Subbed In		#31 Nathan Gerding
2:41 - P1	Missed Free Throw		#25 Aaron Grubb
2:41 - P1	Defensive Rebound		#14 Riley McCloud
36 - 31 2:30 - P1	Made 2pt Shot		#15 Tristin Davis
2:30 - P1	Block		#21 Wyatt Enno
2:30 - P1	Missed 2pt Shot		#33 Jaxon Duttenhefer
2:30 - P1	Deflection		#21 Wyatt Enno
38 - 31 2:16 - P1	Made 2pt Shot		#24 Jacob Pierce
2:09 - P1	Missed 2pt Shot		#14 Riley McCloud
2:08 - P1	Offensive Rebound		#14 Riley McCloud
38 - 33 2:07 - P1	Made 2pt Shot		#14 Riley McCloud
1:49 - P1	Foul		#1 James Keplin
1:49 - P1	Subbed Out		#1 James Keplin
1:49 - P1	Subbed In		#4 Blue Kellogg
1:33 - P1	Foul		#4 Blue Kellogg
1:27 - P1	Missed Free Throw		#13 Jayce Lowman
39 - 33 1:27 - P1	Made Free Throw		#13 Jayce Lowman
1:27 - P1	Missed Free Throw		#13 Jayce Lowman
1:27 - P1	Defensive Rebound		#21 Wyatt Enno
39 - 35 1:08 - P1	Made 2pt Shot		#15 Tristin Davis
0:57 - P1	Missed 2pt Shot		#24 Jacob Pierce
0:57 - P1	Defensive Rebound		#21 Wyatt Enno
39 - 37 0:54 - P1	Made 2pt Shot		#4 Blue Kellogg
0:29 - P1	Missed 2pt Shot		#24 Jacob Pierce
0:28 - P1	Defensive Rebound		#0 Houston Davis
0:01 - P1	Missed 3pt Shot		#0 Houston Davis

Points: 37 FG: 16/27 3PT: 3/12 FT: 2/4 Reb: 18 (O:6 D:12) Fouls 7 Turnovers 6
Points: 39 FG: 17/27 3PT: 4/10 FT: 1/5 Reb: 13 (O:2 D:11) Fouls 6 Turnovers 4

Period - 2			
Score	Time	Stat	Player
18:00 - P2	Gains Ball Possession		Turtle Mountain Central High Schoc
18:00 - P2	Subbed Out		#4 Blue Kellogg
18:00 - P2	Subbed In		#1 James Keplin
17:55 - P2	Subbed Out		#31 Nathan Gerding
17:55 - P2	Subbed In		#2 Tyler Thilmony
17:50 - P2	Subbed Out		#33 Jaxon Duttenhefer

Game Log

17:50 - P2	Subbed In	#30 Jonathan LaFleur	55 - 56 10:48 - P2	Made 2pt Shot	#24 Jacob Pierce	2:06 - P2	Missed 3pt Shot	#21 Wyatt Enno
17:38 - P2	Missed 3pt Shot	#2 Tyler Thilmony	10:30 - P2	Missed 3pt Shot	#0 Houston Davis	2:05 - P2	Defensive Rebound	#2 Tyler Thilmony
17:37 - P2	Offensive Rebound	#25 Aaron Grubb	10:29 - P2	Defensive Rebound	#15 Lucas Burgum	1:51 - P2	Missed 2pt Shot	#25 Aaron Grubb
17:36 - P2	Turnover	#25 Aaron Grubb	10:14 - P2	Missed 3pt Shot	#24 Jacob Pierce	1:50 - P2	Defensive Rebound	#21 Wyatt Enno
17:11 - P2	Missed 2pt Shot	#1 James Keplin	10:13 - P2	Dead Ball Rebound	Turtle Mountain Central High Schoc	1:35 - P2	Foul	#2 Tyler Thilmony
17:11 - P2	Defensive Rebound	#2 Tyler Thilmony	10:13 - P2	Subbed Out	#24 Jacob Pierce	1:33 - P2	Timeout - Half	Mandan
17:01 - P2	Steal	#0 Houston Davis	10:13 - P2	Subbed In	#13 Jayce Lowman	1:17 - P2	Steal	#15 Lucas Burgum
17:00 - P2	Turnover	#30 Jonathan LaFleur	10:03 - P2	Foul	#25 Aaron Grubb	1:17 - P2	Foul	#21 Wyatt Enno
16:50 - P2	Missed 3pt Shot	#1 James Keplin	55 - 58 10:03 - P2	Made 2pt Shot	#1 James Keplin	1:17 - P2	Subbed Out	#21 Wyatt Enno
16:49 - P2	Defensive Rebound	#2 Tyler Thilmony	10:03 - P2	Subbed Out	#13 Parker Walette	1:17 - P2	Subbed In	#13 Parker Walette
40 - 37 16:40 - P2	Made Free Throw	#25 Aaron Grubb	10:03 - P2	Subbed In	#24 Tanner Monette	75 - 73 1:17 - P2	Made Free Throw	#13 Jayce Lowman
41 - 37 16:40 - P2	Made Free Throw	#25 Aaron Grubb	10:03 - P2	Missed Free Throw	#1 James Keplin	1:17 - P2	Missed Free Throw	#13 Jayce Lowman
16:27 - P2	Missed 2pt Shot	#25 Aaron Grubb	10:03 - P2	Defensive Rebound	#13 Jayce Lowman	1:17 - P2	Dead Ball Rebound	Turtle Mountain Central High Schoc
16:24 - P2	Foul	#21 Wyatt Enno	9:41 - P2	Foul	#15 Tristin Davis	1:17 - P2	Deflection	#25 Aaron Grubb
41 - 39 16:21 - P2	Made 2pt Shot	#21 Wyatt Enno	56 - 58 9:41 - P2	Made Free Throw	#13 Jayce Lowman	0:50 - P2	Missed 2pt Shot	#15 Tristin Davis
16:08 - P2	Missed 3pt Shot	#25 Aaron Grubb	57 - 58 9:41 - P2	Made Free Throw	#13 Jayce Lowman	0:49 - P2	Defensive Rebound	#25 Aaron Grubb
16:08 - P2	Offensive Rebound	#24 Jacob Pierce	9:41 - P2	Subbed Out	#33 Jaxon Duttonhefer	77 - 73 0:45 - P2	Made 2pt Shot	#25 Aaron Grubb
16:04 - P2	Steal	#15 Tristin Davis	9:41 - P2	Subbed In	#24 Jacob Pierce	0:45 - P2	Assist	#13 Jayce Lowman
16:04 - P2	Turnover	#13 Jayce Lowman	57 - 60 9:14 - P2	Made 2pt Shot	#0 Houston Davis	0:37 - P2	Missed 2pt Shot	#0 Houston Davis
41 - 41 16:00 - P2	Made 2pt Shot	#1 James Keplin	8:56 - P2	Foul	#24 Tanner Monette	0:36 - P2	Foul	#24 Jacob Pierce
15:42 - P2	Foul	#15 Tristin Davis	58 - 60 8:56 - P2	Made Free Throw	#25 Aaron Grubb	0:36 - P2	Missed Free Throw	#0 Houston Davis
15:42 - P2	Deflection	#0 Houston Davis	59 - 60 8:56 - P2	Made Free Throw	#25 Aaron Grubb	0:36 - P2	Subbed Out	#15 Lucas Burgum
15:42 - P2	Missed 3pt Shot	#13 Jayce Lowman	8:56 - P2	Timeout - Full	Mandan	0:36 - P2	Subbed In	#30 Jonathan LaFleur
15:42 - P2	Defensive Rebound	#15 Tristin Davis	8:38 - P2	Missed 3pt Shot	#0 Houston Davis	77 - 74 0:36 - P2	Made Free Throw	#0 Houston Davis
15:42 - P2	Missed 2pt Shot	#0 Houston Davis	8:38 - P2	Offensive Rebound	#24 Tanner Monette	0:36 - P2	Subbed Out	#30 Jonathan LaFleur
15:42 - P2	Defensive Rebound	#30 Jonathan LaFleur	8:31 - P2	Missed 2pt Shot	#24 Tanner Monette	0:36 - P2	Subbed In	#15 Lucas Burgum
15:42 - P2	Foul	#21 Wyatt Enno	8:31 - P2	Defensive Rebound	#15 Lucas Burgum	0:36 - P2	Timeout - Full	Turtle Mountain Central High Schoc
42 - 41 15:42 - P2	Made Free Throw	#2 Tyler Thilmony	61 - 60 8:23 - P2	Made 2pt Shot	#13 Jayce Lowman	0:20 - P2	Foul	#1 James Keplin
15:42 - P2	Missed Free Throw	#2 Tyler Thilmony	8:02 - P2	Missed 2pt Shot	#1 James Keplin	78 - 74 0:20 - P2	Made Free Throw	#13 Jayce Lowman
15:42 - P2	Defensive Rebound	#21 Wyatt Enno	8:01 - P2	Offensive Rebound	#15 Tristin Davis	79 - 74 0:20 - P2	Made Free Throw	#13 Jayce Lowman
42 - 43 15:28 - P2	Made 2pt Shot	#21 Wyatt Enno	61 - 63 8:00 - P2	Made 3pt Shot	#15 Tristin Davis	0:17 - P2	Foul	#13 Jayce Lowman
15:16 - P2	Missed 2pt Shot	#24 Jacob Pierce	64 - 63 7:42 - P2	Made 3pt Shot	#13 Jayce Lowman	0:17 - P2	Subbed Out	#15 Lucas Burgum
15:16 - P2	Offensive Rebound	#30 Jonathan LaFleur	7:26 - P2	Missed 3pt Shot	#1 James Keplin	0:17 - P2	Subbed In	#30 Jonathan LaFleur
15:07 - P2	Missed 3pt Shot	#24 Jacob Pierce	7:25 - P2	Defensive Rebound	#15 Lucas Burgum	79 - 75 0:17 - P2	Made Free Throw	#15 Tristin Davis
15:07 - P2	Offensive Rebound	#25 Aaron Grubb	67 - 63 7:14 - P2	Made 3pt Shot	#24 Jacob Pierce	79 - 76 0:17 - P2	Made Free Throw	#15 Tristin Davis
45 - 43 14:59 - P2	Made 3pt Shot	#13 Jayce Lowman	7:14 - P2	Timeout - Half	Turtle Mountain Central High Schoc	0:17 - P2	Subbed Out	#30 Jonathan LaFleur
14:59 - P2	Assist	#30 Jonathan LaFleur	7:14 - P2	Offensive Foul	#21 Wyatt Enno	0:17 - P2	Subbed In	#15 Lucas Burgum
14:51 - P2	Missed 2pt Shot	#1 James Keplin	7:14 - P2	Took A Charge	#13 Jayce Lowman	0:11 - P2	Foul	#14 Riley McCloud
14:51 - P2	Defensive Rebound	#30 Jonathan LaFleur	7:13 - P2	Steal	#24 Tanner Monette	80 - 76 0:11 - P2	Made Free Throw	#2 Tyler Thilmony
14:43 - P2	Foul	#21 Wyatt Enno	7:13 - P2	Turnover	#24 Jacob Pierce	81 - 76 0:11 - P2	Made Free Throw	#2 Tyler Thilmony
14:43 - P2	Missed 2pt Shot	#25 Aaron Grubb	67 - 65 7:02 - P2	Made 2pt Shot	#15 Tristin Davis	0:11 - P2	Subbed Out	#15 Lucas Burgum
14:43 - P2	Missed Free Throw	#24 Jacob Pierce	6:44 - P2	Turnover	#25 Aaron Grubb	0:11 - P2	Subbed In	#31 Nathan Gerding
14:43 - P2	Subbed Out	#21 Wyatt Enno	6:44 - P2	Subbed Out	#24 Tanner Monette	81 - 78 0:05 - P2	Made 2pt Shot	#15 Tristin Davis
14:43 - P2	Subbed In	#4 Blue Kellogg	6:44 - P2	Subbed In	#14 Riley McCloud	0:05 - P2	Subbed Out	#31 Nathan Gerding
14:43 - P2	Subbed Out	#15 Tristin Davis	67 - 67 6:26 - P2	Made 2pt Shot	#0 Houston Davis	0:05 - P2	Subbed In	#15 Lucas Burgum
14:43 - P2	Subbed In	#13 Parker Walette	6:06 - P2	Missed 2pt Shot	#24 Jacob Pierce	0:05 - P2	Timeout - Full	Turtle Mountain Central High Schoc
46 - 43 14:43 - P2	Made Free Throw	#25 Aaron Grubb	6:05 - P2	Defensive Rebound	#0 Houston Davis	0:05 - P2	Foul	#0 Houston Davis
14:43 - P2	Subbed Out	#30 Jonathan LaFleur	5:51 - P2	Missed 2pt Shot	#15 Tristin Davis	82 - 78 0:05 - P2	Missed Free Throw	#15 Lucas Burgum
14:43 - P2	Subbed In	#33 Jaxon Duttonhefer	5:44 - P2	Subbed Out	#15 Lucas Burgum	0:05 - P2	Made Free Throw	#15 Lucas Burgum
46 - 46 14:32 - P2	Made 3pt Shot	#0 Houston Davis	5:44 - P2	Subbed In	#30 Jonathan LaFleur	0:05 - P2	Timeout - Full	Mandan
14:18 - P2	Missed 3pt Shot	#24 Jacob Pierce	5:42 - P2	Defensive Rebound	#30 Jonathan LaFleur	0:01 - P2	Missed 3pt Shot	#15 Tristin Davis
14:17 - P2	Offensive Rebound	#33 Jaxon Duttonhefer	5:40 - P2	Missed 2pt Shot	#2 Tyler Thilmony	0:01 - P2	Subbed Out	#24 Jacob Pierce
14:16 - P2	Missed 2pt Shot	#13 Jayce Lowman	5:40 - P2	Defensive Rebound	#21 Wyatt Enno	0:01 - P2	Subbed In	#31 Nathan Gerding
14:16 - P2	Foul	#0 Houston Davis	5:40 - P2	Foul	#13 Jayce Lowman	0:01 - P2	Defensive Rebound	#31 Nathan Gerding
47 - 46 13:56 - P2	Made Free Throw	#13 Jayce Lowman	5:40 - P2	Missed 2pt Shot	#1 James Keplin	Points: 41 FG: 16/27 3PT: 2/10 FT: 7/10 Reb: 13 (O:5 D:8) Fouls 14 Turnovers 1 Points: 43 FG: 11/19 3PT: 3/11 FT: 18/22 Reb: 18 (O:5 D:13) Fouls 7 Turnovers 5		
48 - 46 13:45 - P2	Made Free Throw	#13 Jayce Lowman	67 - 68 5:34 - P2	Made Free Throw	#1 James Keplin			
48 - 48 13:23 - P2	Made 2pt Shot	#1 James Keplin	67 - 69 5:27 - P2	Made Free Throw	#1 James Keplin			
13:09 - P2	Gains Ball Possession	Turtle Mountain Central High Schoc	5:03 - P2	Missed 3pt Shot	#13 Jayce Lowman			
12:59 - P2	Missed 3pt Shot	#4 Blue Kellogg	5:02 - P2	Defensive Rebound	#0 Houston Davis			
12:59 - P2	Offensive Rebound	#13 Parker Walette	4:40 - P2	Turnover	#21 Wyatt Enno			
48 - 50 12:50 - P2	Made 2pt Shot	#13 Parker Walette	69 - 69 4:10 - P2	Made 2pt Shot	#2 Tyler Thilmony			
12:50 - P2	Assist	#1 James Keplin	3:57 - P2	Missed 3pt Shot	#14 Riley McCloud			
12:50 - P2	Foul	#33 Jaxon Duttonhefer	3:57 - P2	Defensive Rebound	#24 Jacob Pierce			
48 - 51 12:50 - P2	Made Free Throw	#13 Parker Walette	71 - 69 3:49 - P2	Made 2pt Shot	#13 Jayce Lowman			
12:24 - P2	Missed 3pt Shot	#24 Jacob Pierce	3:31 - P2	Missed 2pt Shot	#21 Wyatt Enno			
12:18 - P2	Subbed Out	#14 Riley McCloud	3:31 - P2	Offensive Rebound	#21 Wyatt Enno			
12:18 - P2	Subbed In	#21 Wyatt Enno	3:29 - P2	Missed 2pt Shot	#21 Wyatt Enno			
12:16 - P2	Defensive Rebound	#21 Wyatt Enno	3:29 - P2	Offensive Rebound	#14 Riley McCloud			
12:16 - P2	Foul	#2 Tyler Thilmony	71 - 71 3:27 - P2	Made 2pt Shot	#14 Riley McCloud			
12:16 - P2	Subbed Out	#4 Blue Kellogg	3:21 - P2	Timeout - Full	Mandan			
12:16 - P2	Subbed In	#15 Tristin Davis	3:21 - P2	Subbed Out	#13 Jayce Lowman			
12:16 - P2	Subbed Out	#13 Jayce Lowman	3:21 - P2	Subbed In	#15 Lucas Burgum			
12:16 - P2	Subbed In	#15 Lucas Burgum	3:21 - P2	Deflection	#15 Tristin Davis			
12:16 - P2	Missed Free Throw	#15 Tristin Davis	3:21 - P2	Subbed Out	#30 Jonathan LaFleur			
48 - 52 12:16 - P2	Made Free Throw	#15 Tristin Davis	3:21 - P2	Subbed In	#13 Jayce Lowman			
50 - 52 12:00 - P2	Made 2pt Shot	#2 Tyler Thilmony	3:03 - P2	Missed 2pt Shot	#25 Aaron Grubb			
12:00 - P2	Foul	#13 Parker Walette	3:03 - P2	Defensive Rebound	#21 Wyatt Enno			
51 - 52 12:00 - P2	Made Free Throw	#2 Tyler Thilmony	71 - 73 2:45 - P2	Made 2pt Shot	#15 Tristin Davis			
51 - 54 11:34 - P2	Made 2pt Shot	#1 James Keplin	73 - 73 2:27 - P2	Made 2pt Shot	#24 Jacob Pierce			
53 - 54 11:23 - P2	Made 2pt Shot	#25 Aaron Grubb	2:27 - P2	Foul	#14 Riley McCloud			
53 - 56 11:06 - P2	Made 2pt Shot	#21 Wyatt Enno	74 - 73 2:27 - P2	Made Free Throw	#24 Jacob Pierce			