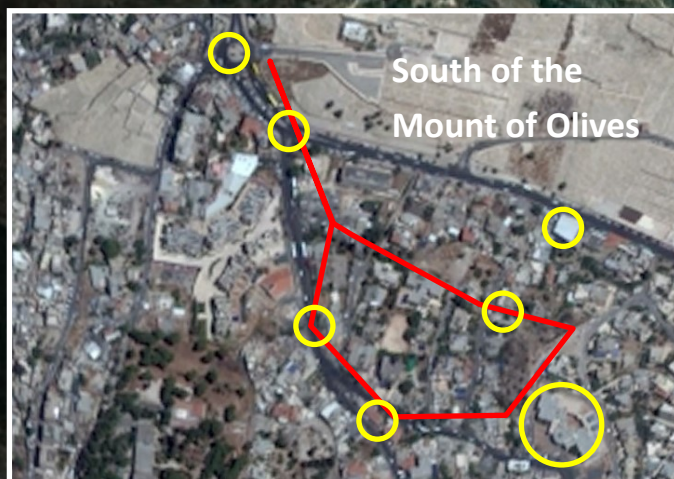


CYDONIA MARTIAN STAR MAP II

The purpose of this illustration is to approximate the scale of how large the Cydonia Pyramid complex is in comparison to the core of the city of Jerusalem and its surroundings. In comparison, the Martian structures were massive in size taking up the entire width and breathe of the ancient city of Jerusalem for example as it pertains to the size of the Face of Mars 'Temple' or mausoleum.

The scale of the Pleiadian Pyramid City approximates the relative size of a modern metropolitan city core. The only difference is that the various structures were massive in size and

'Pleiades Pattern'



The size of the Face of Mars would envelope the entire Old City of Jerusalem



'Face of Ala-lu'

Jerusalem to Scale

Pleiades City

Earthly Jerusalem

CYDONIA, MARS TO SCALE

Face of Mars

Mount of Olives

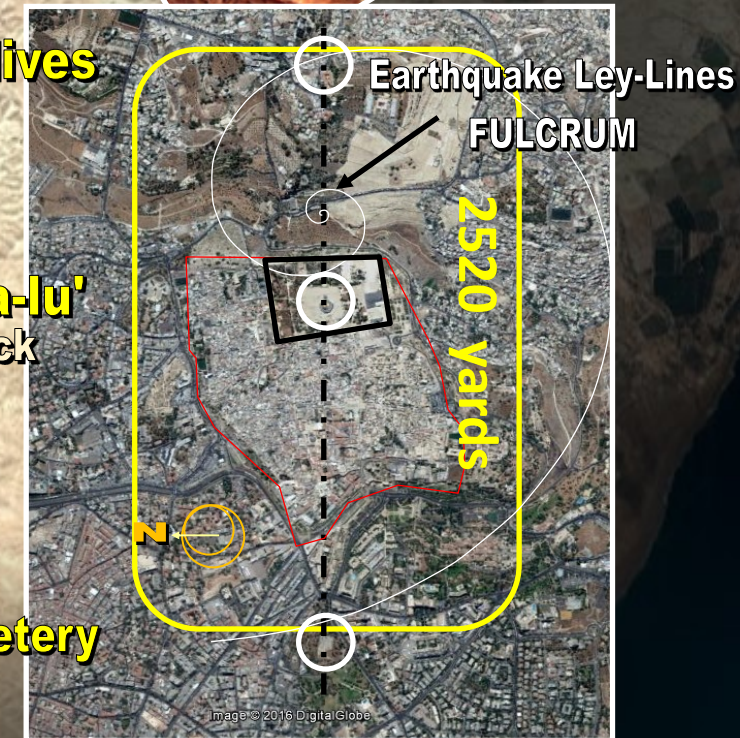
'Face of Ala-lu'
Dome of Rock

Mamila Cemetery

Pentagon Fortress

Pentagon Fortress

The size of the Pentagon Fortress would look like a massive mountain.



2520 YARDS X 10 = 25200 YARDS
14.3 miles

233° heading
25,200 ft perimeter

The size of the Face of Mars appears to be in phi ratio to the Mount of Olives, the Dome of the Rock and the Mamila Cemetery.



Image © 2016 DigitalGlobe



© Composition & Some Graphics by
LUIS B. VEGA
vegapost@hotmail.com
www.PostScript.org
FOR ILLUSTRATION PURPOSES ONLY

SOME SOURCES
GoogleEarth.com
GoogleMars.com
Wikipedia.com

Google earth

Imagery Date: 6/14/2016 31°50'20.00" N 35°14'24.84" E elev 2395 ft eye alt 27.42 mi