

Prepared by Darren Mills

# 8,000 sq.ft. For Lease

## 26465 Northline Rd, Taylor, MI 48180



Listing ID: 30270445  
 Status: Active  
 Property Type: Industrial For Lease  
 Industrial Type: Industrial-Business Park, Manufacturing  
 Contiguous Space: 8,000 SF  
 Total Available: 8,000 SF  
 Lease Rate:  
 Lease Type: Modified Gross  
 Ceiling: 18 ft.  
 Office SF:  
 Drive-In Bays: 2 Bay



### Overview/Comments

8,000 sq.ft. of light industrial for lease at Taylor Trade Center 2. 26465 Northline Rd. Two grade level overhead doors, private entrance. Gross Lease available. . We pay for building taxes, insurance, landscaping and snow removal. Call REA Construction at 734-946-8730 for a tour.  
<http://www.rea-construction.net/>

Industrial Type:	Industrial-Business Park, Manufacturing, Light Industrial, Warehouse/Distribution	Gross Building Area:	78,000 SF
Zoning:	LIGHT INDUSTRIAL	Building/Unit Size (RSF):	8000SF
Building Name:	Taylor Trade Center 2	Usable Size (USF):	8000 SF
		Land Area:	3.53 Acres

### Available Space

Suite/Unit Number:	26465	Rent Escalators:	Fixed Lease
Space Available:	8,000 SF	Conference Rooms:	
Minimum Divisible:	4,000 SF	Offices:	3
Maximum Contiguous:	8,000SF	Office SF:	850
Space Type:	Relet	Parking Spaces:	16
Date Available:	05-01-2020	Drive In Bays:	2
Lease Rate:		Ceiling Height:	18
Lease Type:	Modified Gross	Clear Height:	16

Space Description 8,000 sq.ft. of light industrial for lease in Taylor Trade Center 2. Call Rea Construction at 734-946-8730 for a tour.

<http://www.rea-construction.net/>

Property Located Between: Beech Daly and Lang  
 194 Highway1 mile away  
 Detroit Metropolitan Airport

Tenancy:	Multiple Tenants	Construction/Siding:	Brick
Total Number of Buildings:	2	Parking Ratio:	2 per 1000 SF)
Number of Stories:	1	Parking Type:	Surface
Office Space SF:		Parking Description:	Asphalt
Property Condition:	Good	Total Parking Spaces:	16
Year Built:	1972	Column Spacing:	40
Roof Type:	Flat	Passenger Elevators:	0

Freight Elevators: 0  
Amps: 400  
Volts: 240  
X-Phase: 3

Heat Type:  
Heat Source:  
Lighting:  
Internet Access:

Natural Gas  
Space  
T-8  
Cable

### Land Related

Zoning Description: L 1  
Water Service: Municipal

Sewer Type: Municipal  
Legal Description: 60-077-99-0002-014 Parcel ID

### Location

Address: 26469 Northline Rd, Taylor, MI  
County: 48180 Wayne

MSA: Detroit-Warren-Dearborn  
Submarket: Airport District



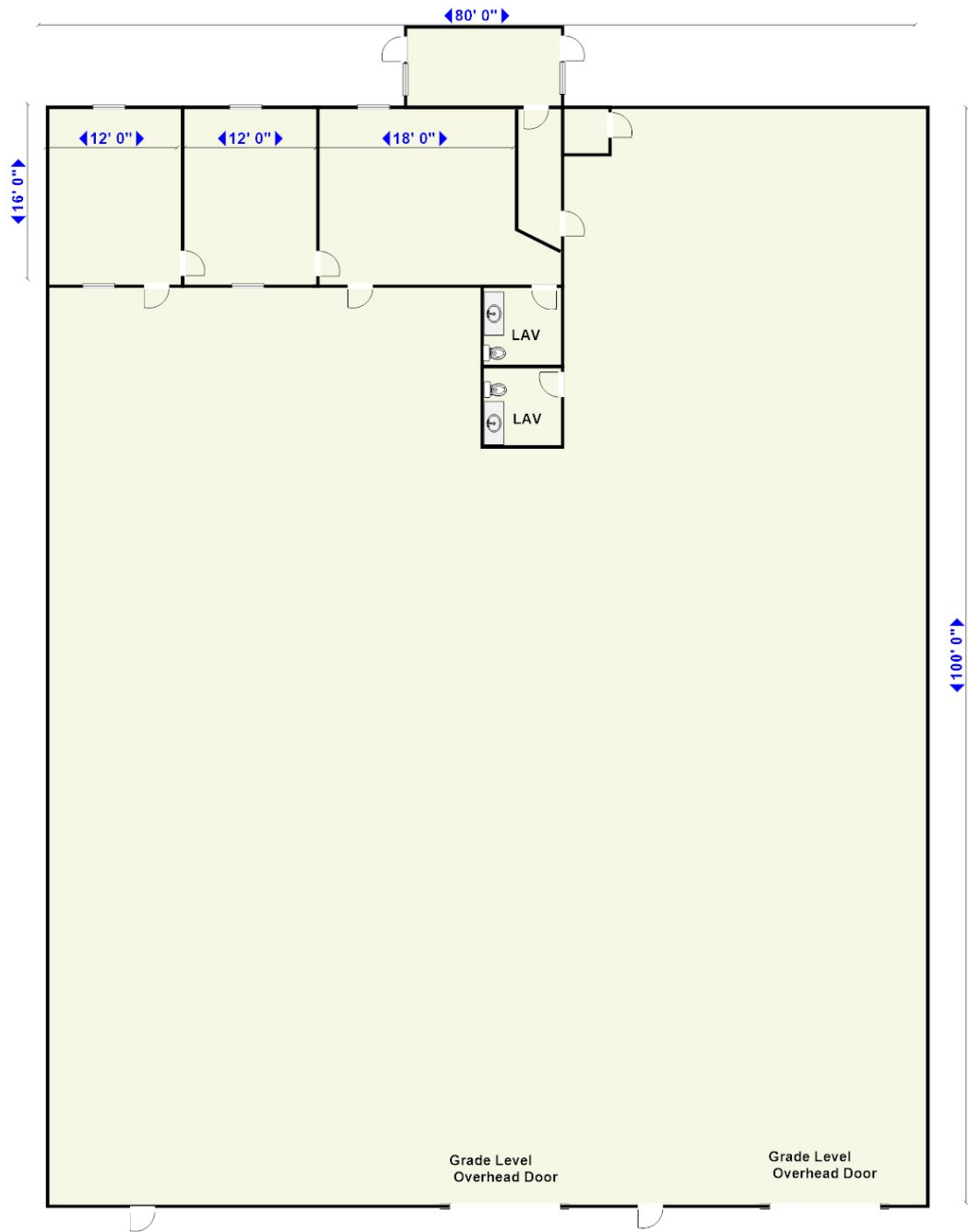
### Property Images



taylor trade center 2



26465 Northline (11)



## Property Contacts

---



Rea Construction

734-946-8730 [0]