

## Product List

Cryptliners

Casket Trays

Absorbent Pads

Cryptliners with Rigid  
Trays

Lifting Straps

Body Bags

Cryptliner Covers with  
Kits



KNF FLEXPAC Corporation  
Tamaqua, Pennsylvania

Manufacturer and  
Distributor of Superior  
Burial Products

**Marilyn C. Barbano**  
Sales Manager

Phone. 585-225-4843  
Fax. 585-227-6667

[mbarbano@knfcorporation.com](mailto:mbarbano@knfcorporation.com)  
[www.knfflexpakcorporation.com](http://www.knfflexpakcorporation.com)

734 West Penn Pike  
Tamaqua, Pennsylvania  
18252

*Cryptliners  
&  
Casket Trays  
offering  
Mausoleum  
Protection*

## CRYPTLINER

The Cryptliner is a one piece casket enclosure made of a heavy duty laminated foil liner and a corrugated polyethylene tray. Used in mausoleum entombments, temporary entombments, removals from the ground to the mausoleum or transfers between cemeteries. The one-way check valve allows pressurized air to flow through while preventing odor.

The Cryptliner is designed for easy transport and storage. Weighing only nine pounds, its one piece construction allows for quick assembly. The ball bearing pellets help to slide the casket into the mausoleum crypt.

Included with Cryptliner  
Absorbent Pad  
Ball Bearing Pellets  
Roll of Pressure Sensitive Tape  
Installation Instructions

Size: I.D. 30" x 85 1/2" x 3 3/4" Deep

## Casket Protection with the Cryptliner



One Piece Casket Enclosure

Prevents Leakage, Odor Release  
and Infestation

1-Way Check Valve

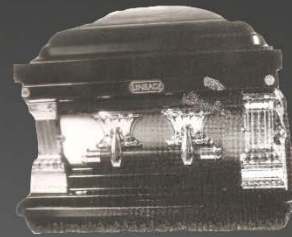
## Casket Tray



Leak Proof

Rigid and Durable

Rolled Lip for Handling Ease



## Casket Tray

Casket Trays are an inexpensive way to protect your mausoleum and its contents.

Our Casket Trays are manufactured with the finest high molecular weight polyethylene for durability and longevity. The rolled lip allows for ease of handling. The trays nest to save storage space and shipping cost.

An individually packaged absorbent pad is available with each Casket Tray. This absorbent pad captures fluid and turns it into a semi-solid state for an extra measure of protection.

Dimensions: O.D. 30 5/8" x 88 1/4"

I.D. 28 1/4" x 85 1/2" x 3 1/4" Deep