

LIFE PATTERNS INC.

Life Patterns Lowdown

In this issue:

- * AuthentiCare System
- * Research Study
- * W-2s & addresses
- * Excess Funds
- * DCF Helpline
- * Holiday Hours
- * Message from Jon

AuthentiCare System

To clock in and out, workers are able to use both the automated phone system and the mobile app. The main difference between the two is that with the phone system the Participant's authorized phone must be used by the worker to call the system to clock in and out. The app; however, allows the worker to use their own cell phone to clock in and out.

If you are set up for the app and it doesn't work, then you must call the automated system using the Participant's phone; both the app and phone system can be used interchangeably. AuthentiCare **must** always be used for clocking in/out, as it is mandated by the State of Kansas.

Research Study Participants Wanted

The Institute on Community Integration and the University of Minnesota are doing a research study on how well Home and Community Based Services are helping people with disabilities. This study will help measure and provide information on whether people are living the lives they want.

To participate in this study:

- ⇒ Must be 18 years of age
- ⇒ Must be receiving services on the TBI waiver, PD waiver, IDD waiver, or the FE waiver
- ⇒ Must have access to Zoom
- ⇒ Be willing to do a 60–90 minute interview at three separate times over a 1-year period

There will be incentives for those who participate in this study. If interested contact Noelle, whose information is listed below.

Noelle Kurth at the University of Kansas (KU)
Phone: 785-864-7085
Email: pixie@ku.edu

W-2 Forms

As the end of the year nears, it is time to start thinking about W-2's.

Please have your employees contact either office for address changes.

Employees must fill out the **Change of Address** form which is on our website under the *Support Workers* tab. Please let your employees know that W-2's will be mailed out between January 20th-31st. We need the first two weeks of the year to balance all regulatory reporting requirements.

Excess Funds Distribution

Excess funds are the difference between the State of Kansas' reimbursement rate and what is paid to your employees, including employer expenses like FICA, unemployment, and workers' compensation. The excess funds will be calculated after the 12.15.2021 payroll. We will contact employers with more than one employee either by email or phone to determine distribution. Employers with one employee won't be contacted and the funds will be distributed to that employee. Funds will be distributed on the 12.31.2021 paycheck. Time is of the essence, so please be sure to respond as soon as possible. Any funds that are not distributed to employees *must* go back to the State.

Holiday Office Hours

November 25th and 26th

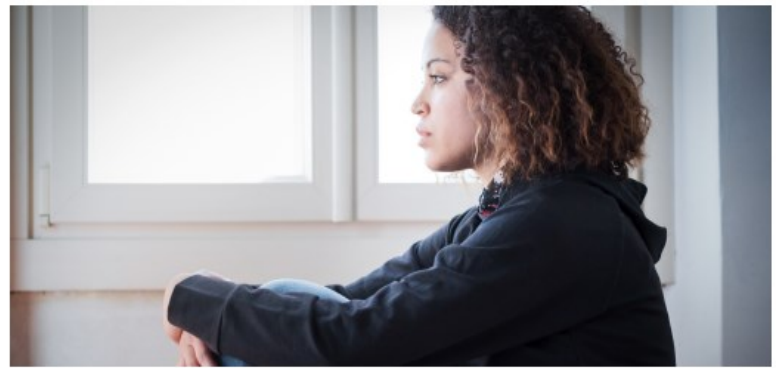
CLOSED

December 23rd and 24th

CLOSED

December 31st

CLOSED



Kansas Department for Children and Families Family Mobile Crisis Helpline

Services are available for all Kansans 20 years old or younger, including anyone in foster care or formerly in foster care.

Call the helpline at
833-441-2240

A wealth of resources at your fingertips



Over the phone support and problem solving to help resolve a child's behavioral health crisis

v.08.30.2021



Over the phone support with referral to community resources or a recommendation to engage in stabilization services



In-person support via mobile crisis response if the crisis cannot be resolved over the phone



In emergency situations, EMS, law enforcement and/or the mobile crisis response unit will be contacted to assist

To our Life Patterns Families,

Where has the time gone? Has it really been another year? I am sure that everyone stayed safe, stayed healthy, and took the time to be with family as well. Hopefully, we can all reflect on 2021 and appreciate the little things in life. Life Patterns would like to say a big THANK YOU for selecting us to be your FMS payroll provider!! We also want to wish every one of you safe travels and a happy holiday season!!

... Jon Gerdel

Merry Christmas and Happy New Year!