



Transport Chair



Basic Manual Wheelchair



Lightweight Manual Wheelchair



Manual Tilt Wheelchair



Power Wheelchair



Scooter

Wheelchairs

Transport Wheelchair w/footrests
Transport w/c Heavy Duty w/footrests

Basic Manual Wheelchair (up to 18" W)
Basic Manual Wheelchair (20"W)
Basic Bariatric Manual w/c (22" plus)

Lightweight Manual Wheelchair (up to 18"W)
Lightweight Manual Wheelchair (up to 20"W)
Lightweight Manual Wheelchair (22" and up)
(Lightweight Manual Wheelchairs include specialty seating whereas Basic Manual Wheelchairs have sling upholstery with option to add seating)

Manual Tilt Wheelchair
Manual Recline Wheelchair
Tilt/recline Wheelchair
Power Wheelchair
Scooter (3 or 4 wheel)

Wheelchair Add Ons

Cushion (foam, air, gel)
Elevating Legrest / each
Wheelchair Tray
Amputee Board



Elevating Legrest



Roho Cushion

Walkers

Standard Folding, no wheels
Heavy Duty Folding walker no wheels
2 or 4 wheeled folding walker
Rollator walker w/ seat
Rollator Heavy duty/ wide
Rollator w/forearm supports
Knee Walker



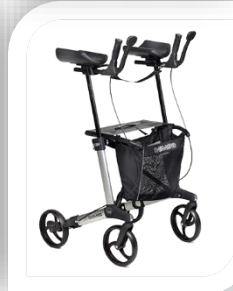
Std Folding No Wheels



2 Wheeled Walker



Rollator



Rollator w/forearm supports



Knee Walker



Canes & Crutches

Standard Aluminum Crutches
Forearm crutches
Single point cane
Quad Cane

Commode Chairs

Standard Commode No Wheels
Drop Arm
Heavy Duty
Wheeled Tilt Commode
Ocean std shower commode
VIP tilt shower commode



Standard Commode



Ocean Std Shower



VIP tilt Shower

Raised Toilet Seats

With or Without arms
Heavy duty (see HD Commode)





Toilet Mounted



Free Standing Versa



Bath Chair w/Back



Bath Stool



Unpadded Transfer Bench

Versa Frames

Toilet Mounted
Free Standing

Bath Seats & Tub Chairs

Bath Chair with/without back
Bath stool
Bariatric bath chair
Transfer Tub Bench padded or unpadded
Heavy Duty Transfer bench
Sliding transfer bench
Clamp on Tub Bar
Bath Board
Bath lift, Battery Powered
Reclining Bath lift



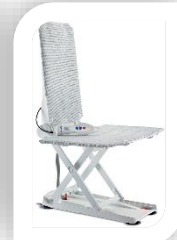
Sliding Transfer Bench



Clamp On Tub Bar



Bath Board



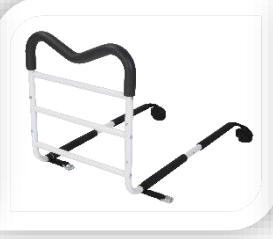
Bath Lift

Bed Equipment

Bed assist Rail
"M" Rail
Halo Safety Ring
Trapeze Bar
Floor to ceiling pole (Super Pole) with or without bar
Over Bed Table
Over Bed Tilt Table
Perch Stool



Bed Rail



"M" Rail



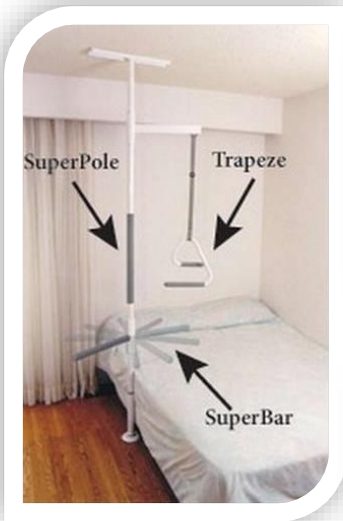
Halo Safety Ring



Over Bed Table

ROM & Transfer Boards

Plastic ROM Board (wood available for purchase only)
Wood Transfer Board
Transfer Disc



Patient Lift



Sit-to-Stand Lift

Lifts

Patient Lift manual w/sling
Patient Lift Power w/sling
Sit-to-Stand Lift



Plastic ROM Board

Hospital Beds

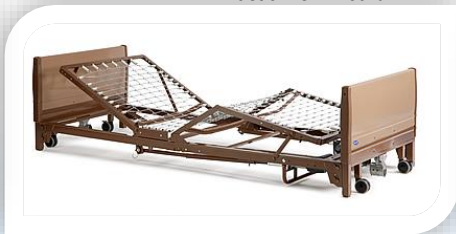
Full Electric Hospital Bed with Mattress
Full Electric Low Bed "High/Low" with mattress
Mattress only
Alternating Mattress overlay (only)

Ramps

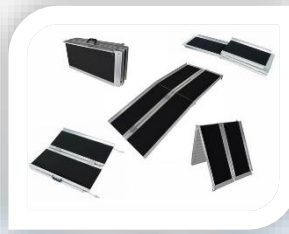
Threshold Ramps
4-8 Foot Ramps



Full Electric Hospital Bed with Mattress



Low Bed "High/Low" Bed



Portable Ramps



Threshold ramp

Please Note: Credit Card (or deposit of full value of equipment) & Copy of Photo ID required on file for all rentals.
Rentals are by the month. Payment is required at the beginning of each rental period.