

Rabbit Anti-SDHB [EPR10880]: RM0397, RM0397RTU7

Intended Use: For Research Use Only

Description: Succinate dehydrogenase (SDH) is Complex II in the mitochondria, vital for mitochondrial electron transport, as well as Krebs cycle function. SDH catalyzes the oxidation of succinate to fumarate and transfers electrons to ubiquinone through the coordination of its four subunits (SDHA, SDHB, SDHC, and SDHD). The SDH complex functions as a tumor suppressor. Loss of any subunit proteins lead to destabilization of the complex and tumor formation. SDH subunit B (SDHB) is ubiquitously expressed in normal tissues. Germline mutations in SDHB, SDHC, or SDHD genes predispose development of pheochromocytoma, paraganglioma and gastrointestinal stromal tumor (GIST). SDHB immunohistochemistry is helpful in the identification of pheochromocytomas, paragangliomas or GIST with SDHB mutation.

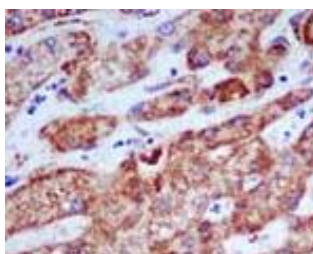
Specifications

Clone: EPR10880 equivalent to EP288
Source: Rabbit
Isotype: IgG
Reactivity: Human, mouse, rat
Localization: Cytoplasm
Formulation: Antibody in PBS pH7.4, containing BSA and $\leq 0.09\%$ sodium azide (NaN₃)
Storage: Store at 2°- 8°C
Applications: IHC, Flow Cyt., IP, WB
Package:

Description	Catalog No.	Size
SDHB Concentrated	RM0397	1 ml
SDHB Prediluted	RM0397RTU7	7 ml

IHC Procedure

Positive Control: Colon, colon carcinoma
Concentrated Dilution: 50-200
Pretreatment: Citrate pH6.0 or EDTA pH8.0, 15 minutes using Pressure Cooker, or 30-60 minutes using water bath at 95°-99°C
Incubation Time and Temp: 30-60 minutes @ RT
Detection: Refer to the detection system manual
* Result should be confirmed by an established diagnostic procedure.



FFPE human liver tissue stained with anti-SDHB using DAB

References:

1. Circumventing the Crabtree Effect: A method to induce lactate consumption and increase oxidative phosphorylation in cell culture. Mot AI, et al. Int J Biochem Cell Biol 79:128-138, 2016.
2. Oxidative capacity and glycogen content increase more in arm than leg muscle in sedentary women after intense training. Nordsborg NB, et al. J Appl Physiol 119:116-23, 2015.
3. Mitochondrial dynamics protein Drp1 is overexpressed in oncocyctic thyroid tumors and regulates cancer cell migration. Ferreira-da-Silva A, et al. PLoS One 10:e0122308, 2015.
4. Independent effects of endurance training and weight loss on peak fat oxidation in moderately overweight men: a randomized controlled trial. Nordby P, et al. J Appl Physiol 118:803-10, 2015.

Doc. 100-RM0397
Rev. A