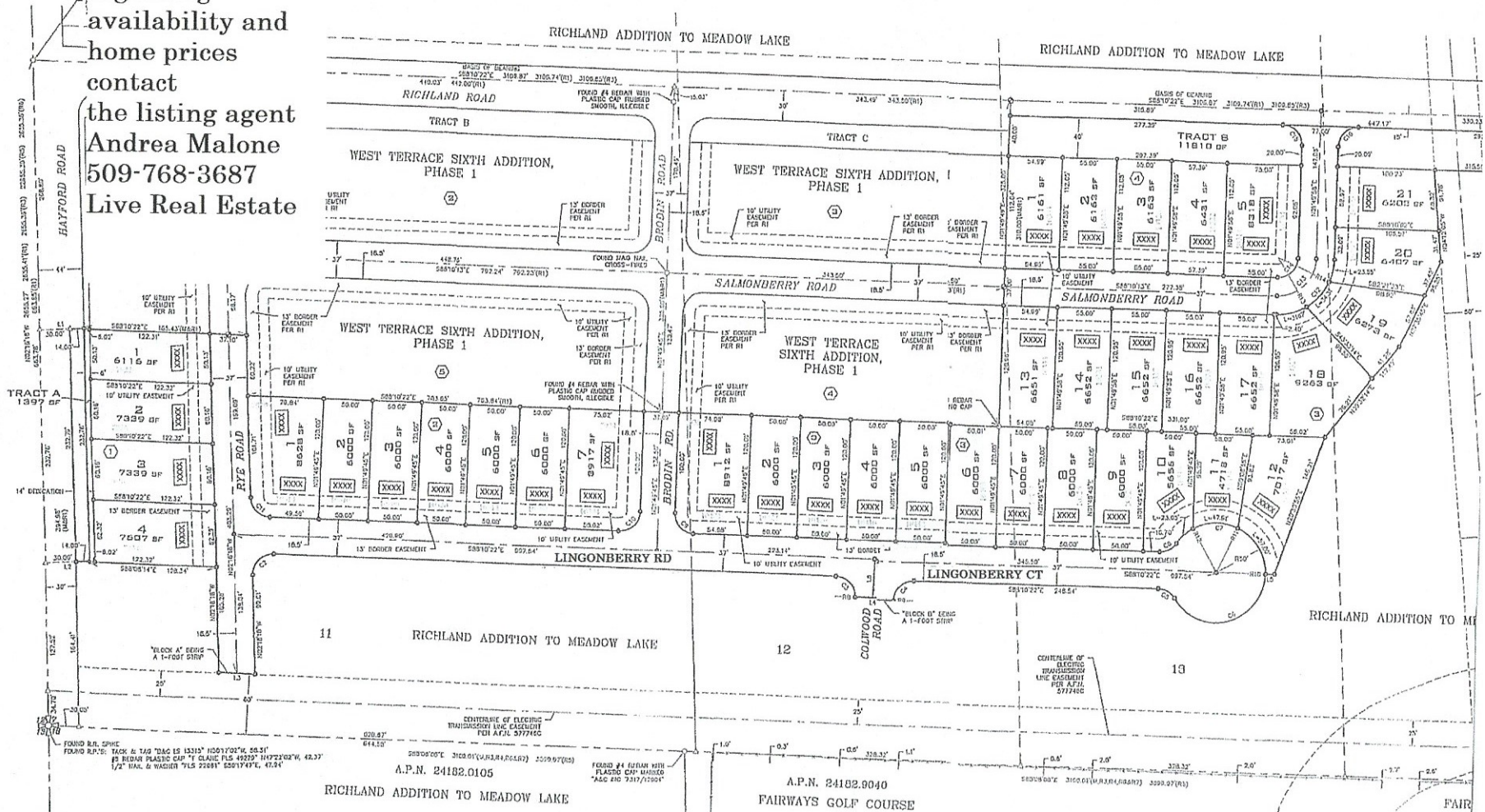


**FINAL PLAT OF
WEST TERRACE SIXTH ADDITION, PHASE 2**
LOCATED IN THE S.W. 1/4 & S.E. 1/4 OF THE S.W. 1/4 OF SECTION 7, T. 24 N., R. 42 E., W.M.
SPOKANE COUNTY, WASHINGTON

For details regarding availability and home prices contact the listing agent **Andrea Malone** 509-768-3687 Live Real Estate



A.P.N. 24182.0105
RICHLAND ADDITION TO MEADOW LAKE

A.P.N. 24102.0040
FAIRWAYS GOLF COURSE