

MELVIN MCCLURE

[www.melvinmcclure.com](http://www.melvinmcclure.com)

[mcclure@melvinmcclure.com](mailto:mcclure@melvinmcclure.com)

1.270.331.1577

PORTFOLIO

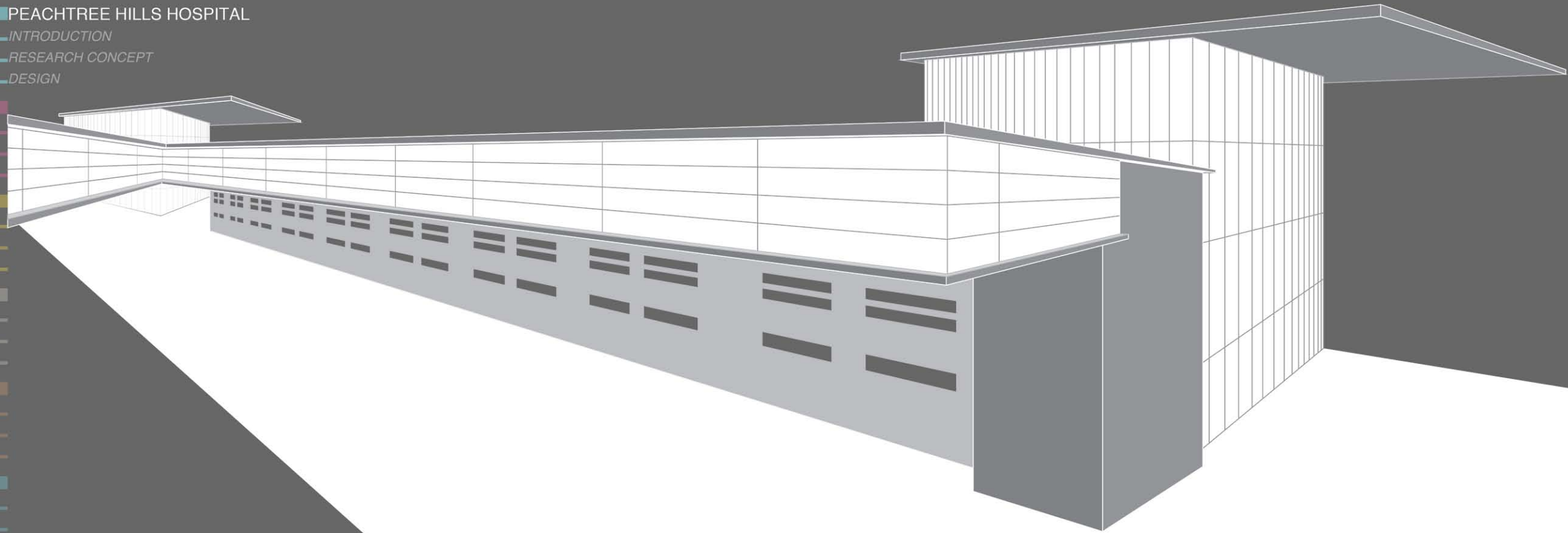


PEACHTREE HILLS HOSPITAL

INTRODUCTION

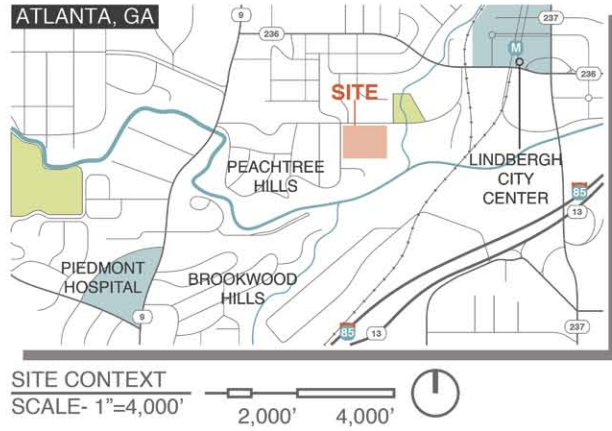
RESEARCH CONCEPT

DESIGN



# PEACHTREE HILLS HOSPITAL

## SITE:

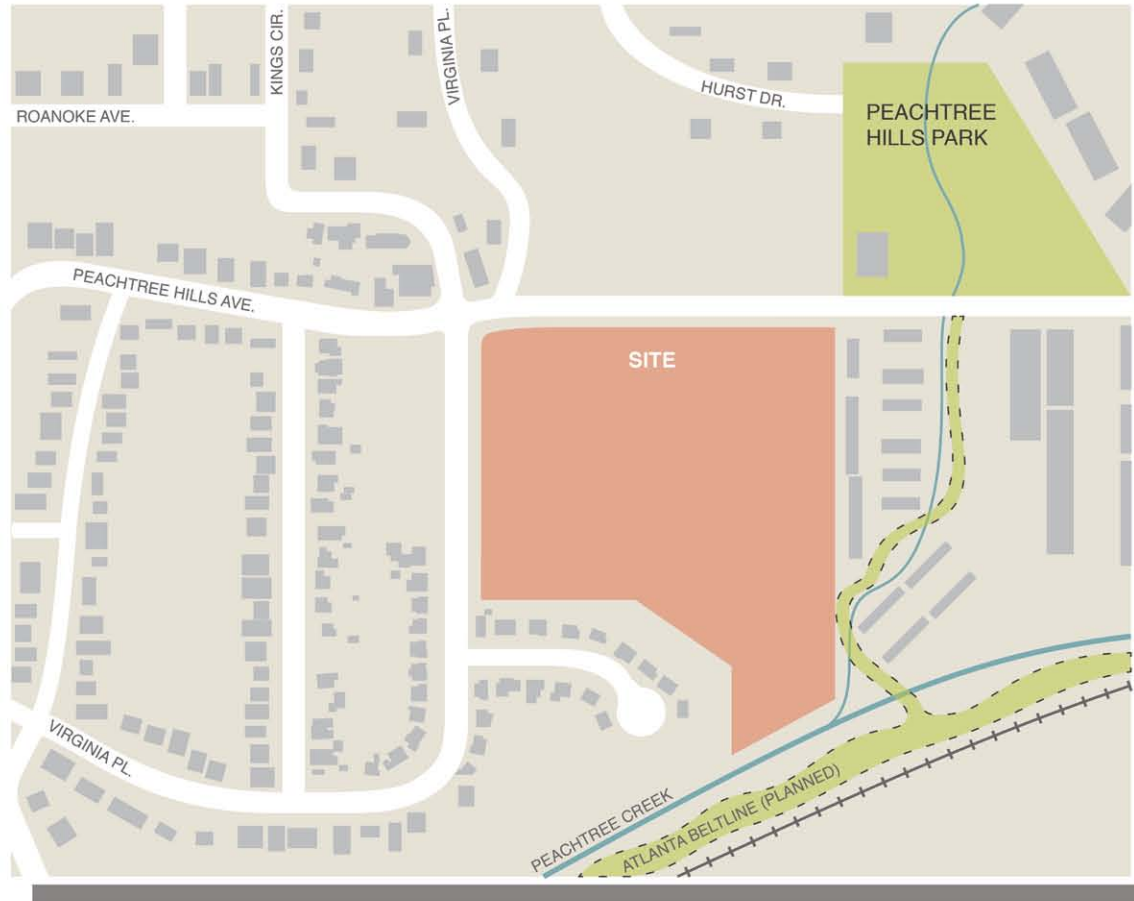


## CONTEXT:

THE PEACHTREE HILLS AREA IN THE BUCKHEAD DISTRICT OF ATLANTA IS A WEALTHY ENCLAVE OF SINGLE-FAMILY HOMES SITUATED BETWEEN PEACHTREE ROAD NE AND PIEDMONT ROAD NE. PIEDMONT HOSPITAL, A REGIONAL FULL-SERVICE MEDICAL FACILITY, IS LOCATED 1.3 MILES SOUTHWEST OF THE SITE. A PLANNED SEGMENT OF THE ATLANTA BELTLINE IS LOCATED ADJACENT TO THE SITE AND WILL CONNECT TO THE EXISTING BROOKWOOD STRETCH OF THE TRAIL. PUBLIC TRANSIT OPTIONS ARE LIMITED, ALTHOUGH MARTA BUS SERVICE IS PROVIDED ALONG PEACHTREE HILLS AVENUE CONNECTING TO SUBWAY SERVICE AT THE LINDBERGH CITY CENTER.

## OBJECTIVES:

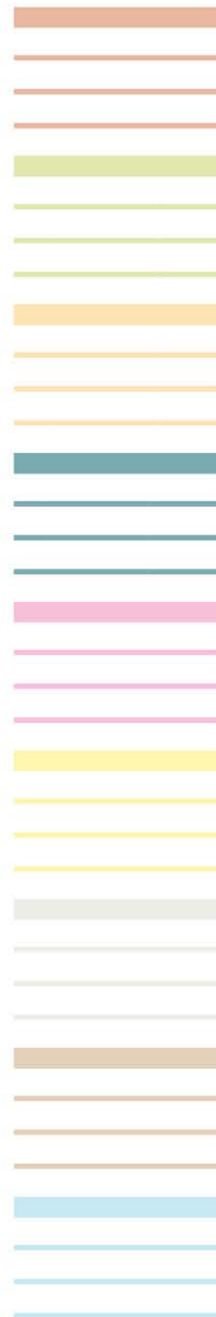
THE PROJECT CALLS FOR THE DESIGN OF A 96-BED, LIMITED SERVICE HOSPITAL WHICH WILL ALSO SERVE AS A CENTRAL POINT WITHIN THE EXISTING RESIDENTIAL NEIGHBORHOOD. IN THIS CAPACITY, THE FACILITY SHOULD PROVIDE SERVICES AND PUBLIC SPACES TO THE NEARBY RESIDENTS.



## PROGRAM:

- |   |                                  |
|---|----------------------------------|
| // 96-BED INPATIENT HOSPITAL                        | // EMERGENCY DEPARTMENT          |
| // 4 ACUTE CARE UNITS (24 BEDS;<br>18,000SF APIECE) | // 27,470SF                      |
| // CARDIOLOGY CENTER                                | // SURGERY SUITE                 |
| // 38,711SF   | // 33,605SF                      |
| // DIAGNOSTICS CENTER                               | // ADMINISTRATION + LOBBY + I.T. |
| // 14,184SF   | // 26,754SF                      |
|   | // SUPPORT SERVICES              |
|   | // 33,227SF                      |

- MARTA STATION  
RAIL LINE
- PUBLIC PARK  
LANDMARK

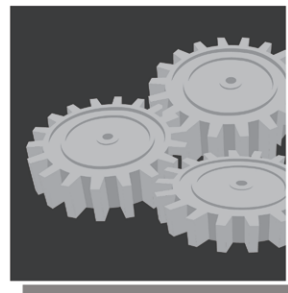


# PEACHTREE HILLS HOSPITAL

## GUIDING PRINCIPLES:



WAYFINDING  
 // LOGICAL CIRCULATION  
 // PROGRESSIVE DISCLOSURE  
 // COMMON AESTHETICS



COMPONENT ORGANIZATION  
 // RATIONAL LAYOUT  
 // PROGRAM GROUPING  
 // INTEGRATED FUNCTIONS



DE-CENTRALIZATION  
 // DEPARTMENTAL  
 DE-CENTRALIZATION  
 // CIRCULATION + WAYFINDING

## CONCEPT INTENTIONS:

1. INTEGRATE PROGRAM FUNCTIONS.
2. PROGRESSIVE DISCLOSURE TO ORGANIZE PROGRAM.
3. LAYOUT OF COMPONENTS FOR EASE OF WAYFINDING.
4. EMPLOY VARIOUS WAYFINDING STRATEGIES.
5. DEVELOP BUILDING AESTHETICS AND APPEARANCE.

## PROGRAM GROUPING:



PUBLIC + ADMIN

PUBLIC:  
 // DINING + RETAIL  
 // CONFERENCE  
 // EDUCATION  
 // PASTORAL CARE  
 // VOLUNTEER CTR.

STAFF:  
 // ADMIN OFFICES  
 // ADMITTING  
 // MONITORING  
 // I.T.  
 // HEALTH INFO MGMT.  
 // PHYSICIAN CTR.



DIAGNOSE + TREAT

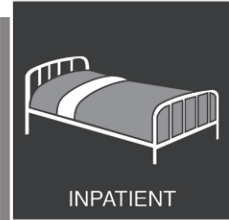
EMERGENCY:  
 // E.D.  
 // DECISION-TO-  
 ADMIT  
 // AMBULANCE  
 SERVICES

DIAGNOSTICS:  
 // DIAGNOSTIC CTR.  
 // CLINICAL LAB  
 // INTEGRATED  
 MEDICINE CTR.



OUTPATIENT

COMPONENTS:  
 // SURGERY PREP  
 // SURGERY SUITE  
 // P.A.C.U.  
 // RECOVERY CTR.



INPATIENT

NURSING UNITS:  
 // ACUTE CARE  
 // 24 BEDS  
 // ACUTE CARE  
 // IP DIALYSIS  
 // 24 BEDS  
 // ACUTE CARE  
 // REHAB UNIT  
 // 24 BEDS  
 // ACUTE CARE  
 // I.C.U.  
 // 24 BEDS



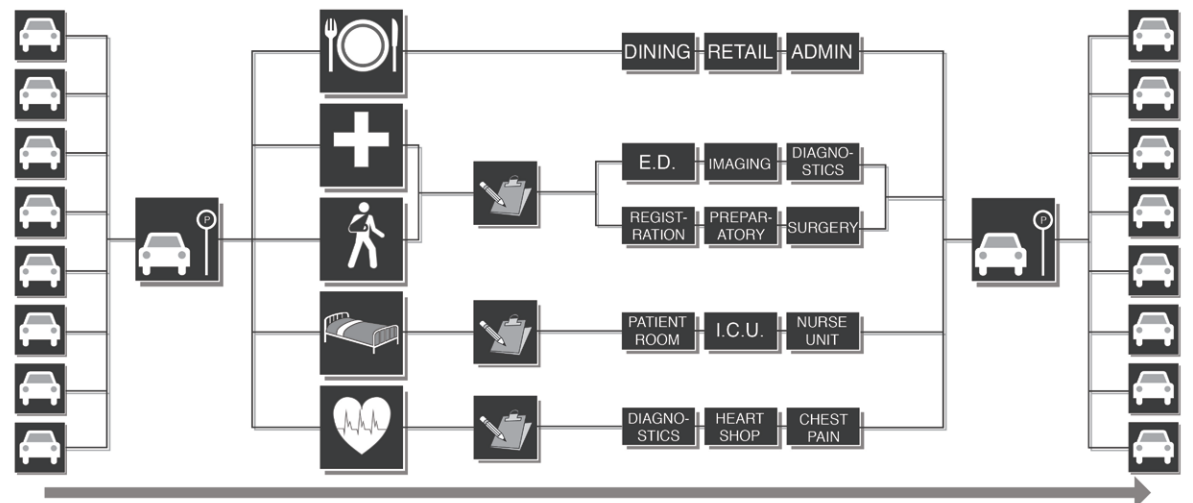
CARDIOLOGY

OPERATIONS:  
 // ADMIN OFFICES  
 // STAFF OFFICES

DIAGNOSTICS:  
 // CARDIOPULMONARY  
 DIAGNOSTICS  
 // CATH LAB

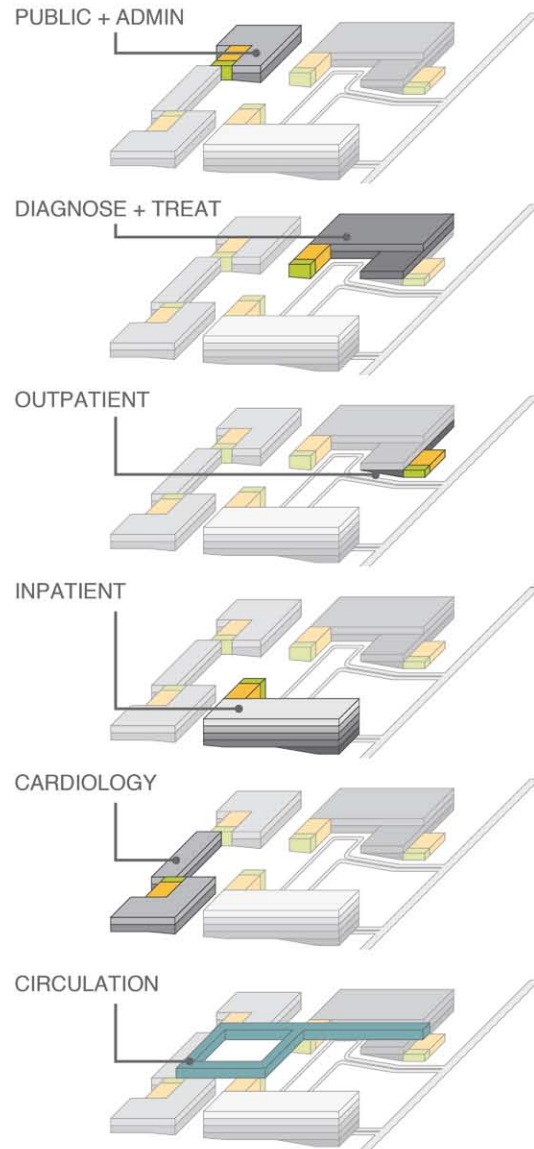
TREATMENT:  
 // HEART SHOP  
 // CHEST PAIN CTR.  
 // PREP + RECOVERY  
 // OBSERVATION

## PROGRESSIVE DISCLOSURE:



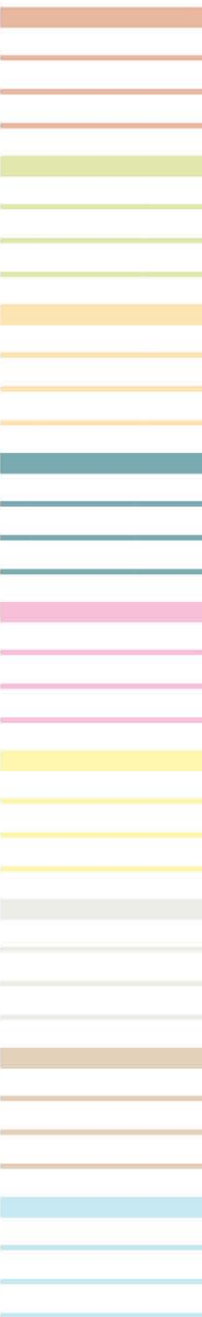
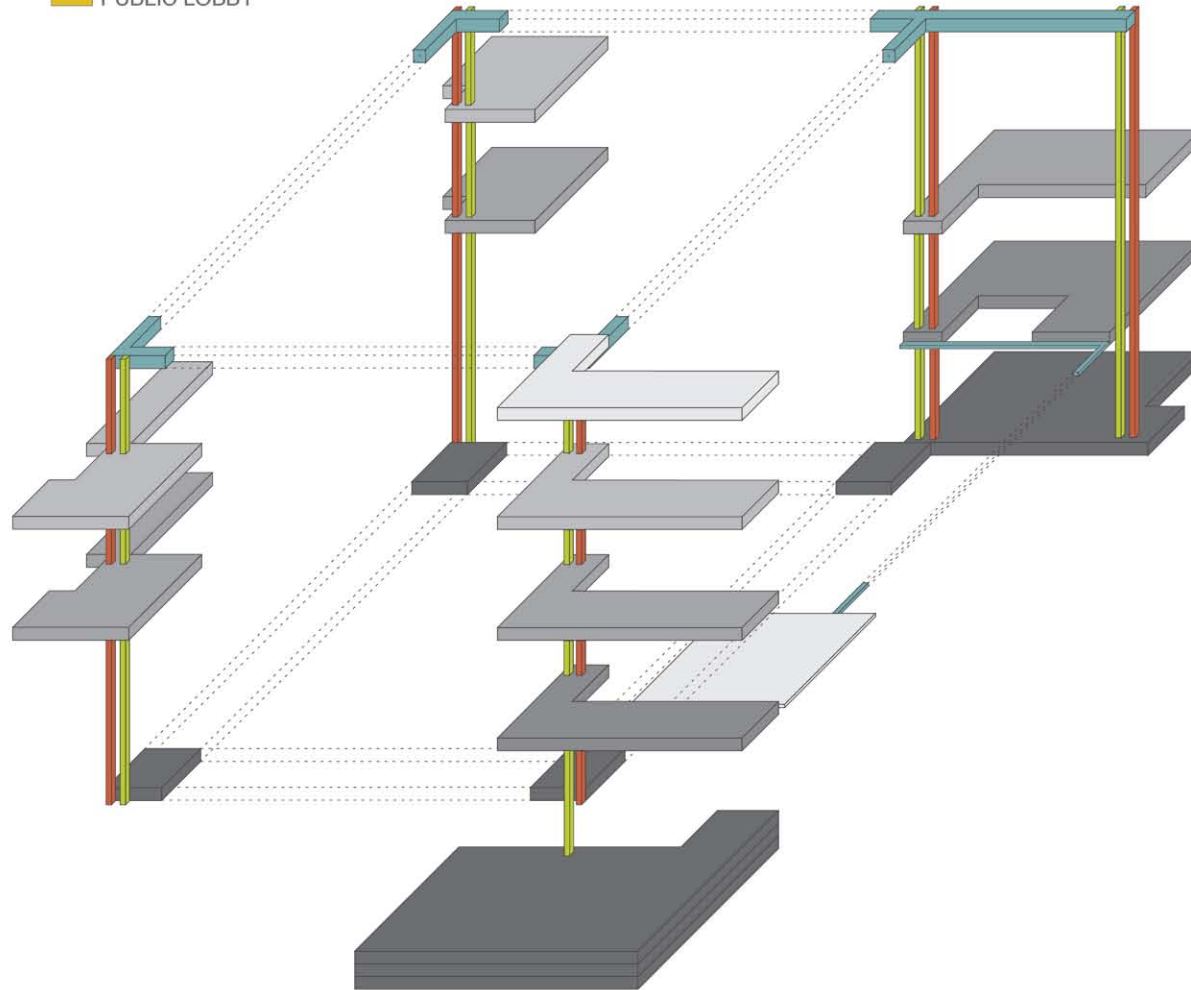
# PEACHTREE HILLS HOSPITAL

## PROGRAM LAYOUT:



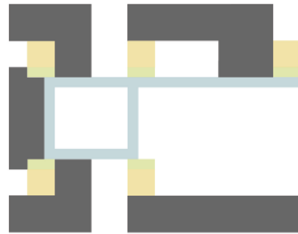
## PROGRAM AXONOMETRIC:

- INTER-DEPARTMENTAL CIRCULATION
- VERTICAL CIRCULATION-PUBLIC
- VERTICAL CIRCULATION-SERVICE
- PROGRAM COMPONENT
- PUBLIC LOBBY



# PEACHTREE HILLS HOSPITAL

## INTEGRATED FUNCTIONS:



- // RELATED PROGRAM COMPONENTS HOUSED TOGETHER.
- // RESULT: CONSOLIDATION OF RESOURCES, EASE OF CIRCULATION.

## VERTICAL CIRCULATION:



- // CIRCULATION CORES SERVE AS VISUAL LANDMARKS FOR VISITORS.
- // LINE OF SIGHT AT DISCHARGE POINTS.
- // VISIBLE DEPARTMENT ENTRANCES AT POINTS OF DISCHARGE.

## INTER-DEPARTMENTAL CIRCULATION:



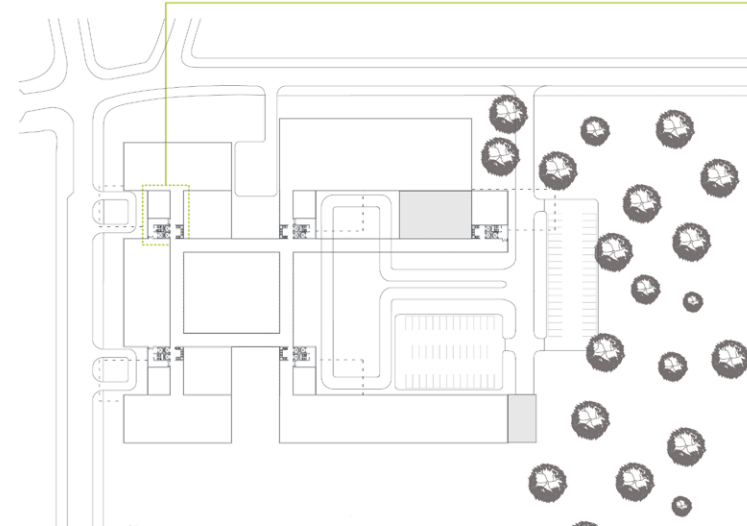
- // CIRCULATION CORRIDOR CONNECTS EACH ENTRY AND PUBLIC LOBBY.
- // EACH VERTICAL CORE CONNECTED VIA THIS CORRIDOR.
- // EACH DEPARTMENT BLOCK CONNECTED VIA CORRIDOR.

## ENTRIES + PUBLIC LOBBIES:

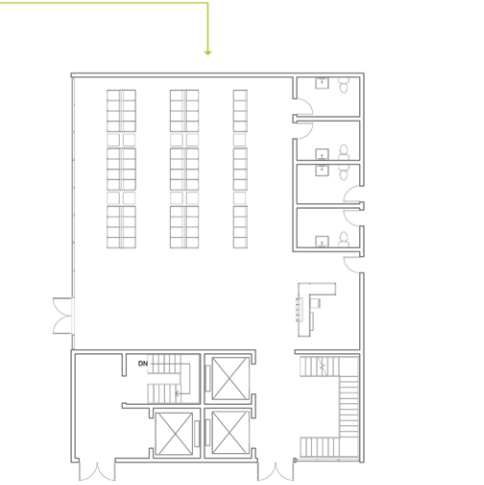


- // ENTRY + PUBLIC LOBBY AT EACH COMPONENT BLOCK.
- // ENTRY ADJACENT TO + CONNECTED TO EACH VERTICAL CORE AND EACH LOBBY.
- // APPLICATION OF DE-CENTRALIZATION OF COMPONENTS.

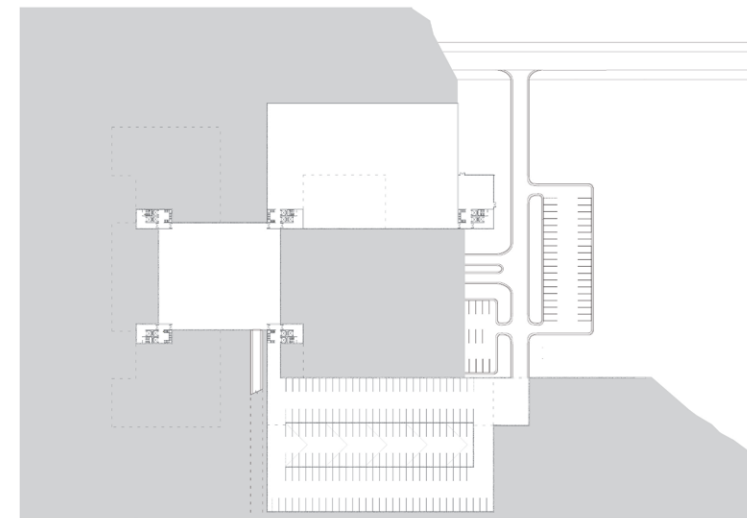
## PLANS:



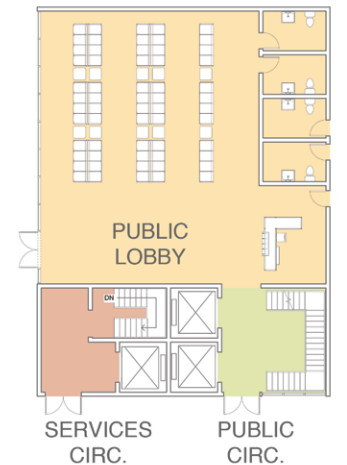
2ND FLOOR PLAN  
SCALE- 1"=384' 192' 384'



NW LOBBY PLAN  
SCALE- 1"=32' 16' 32'



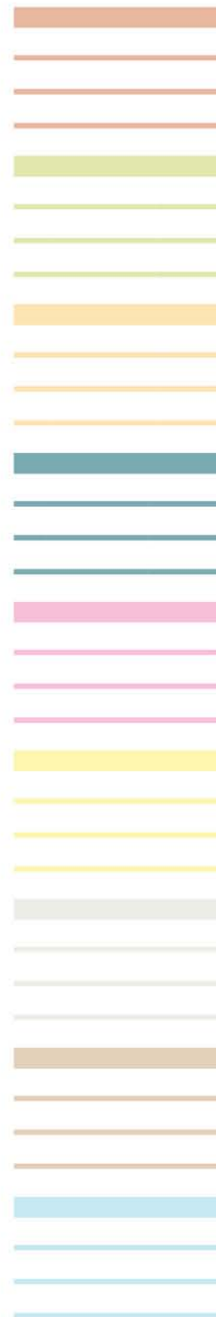
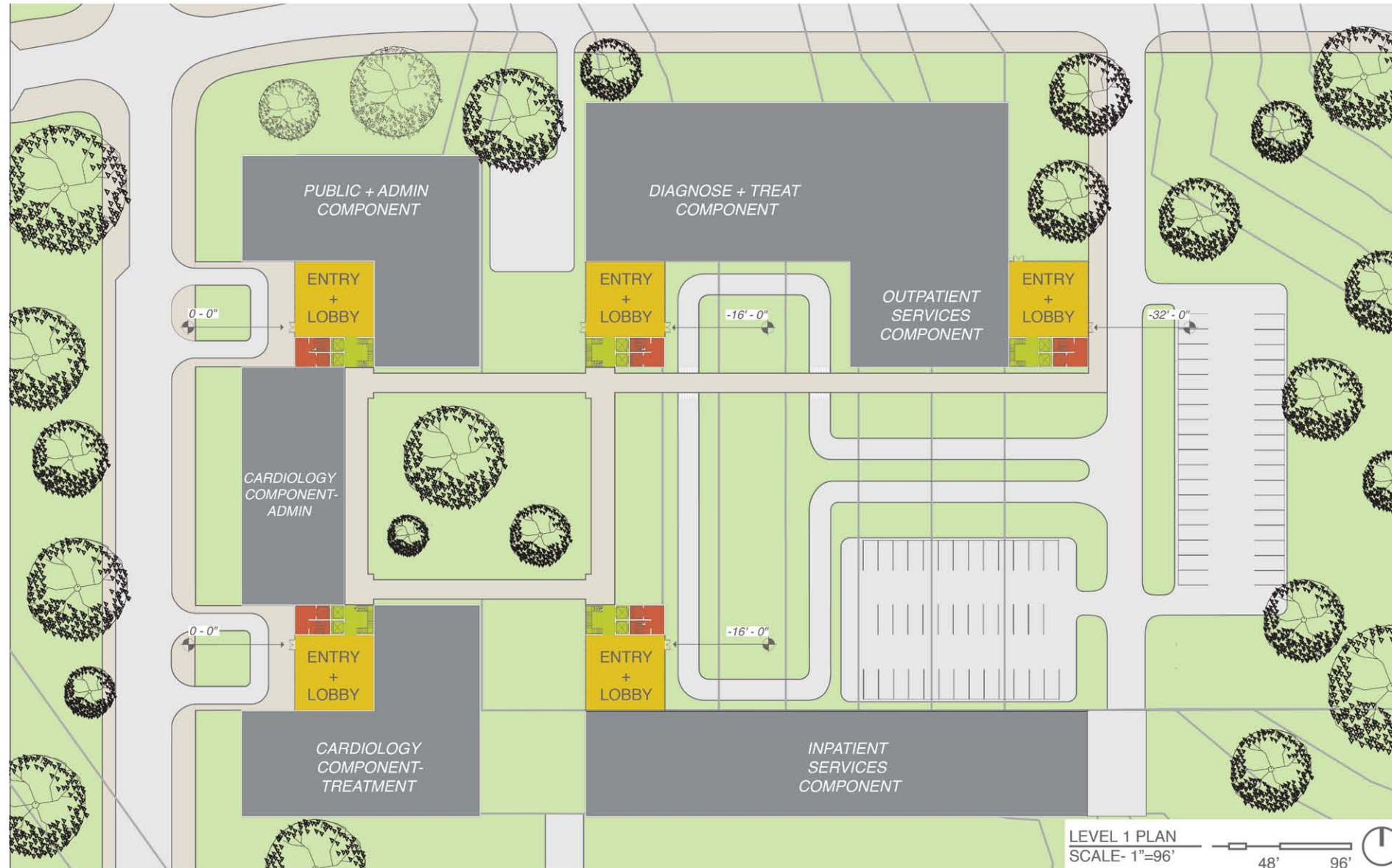
BASEMENT PLAN  
SCALE- 1"=384' 192' 384'



SERVICES CIRC. PUBLIC CIRC.

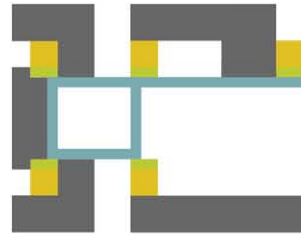
# PEACHTREE HILLS HOSPITAL

## GROUND LEVEL PLAN:



# PEACHTREE HILLS HOSPITAL

## BUILDING ELEVATIONS

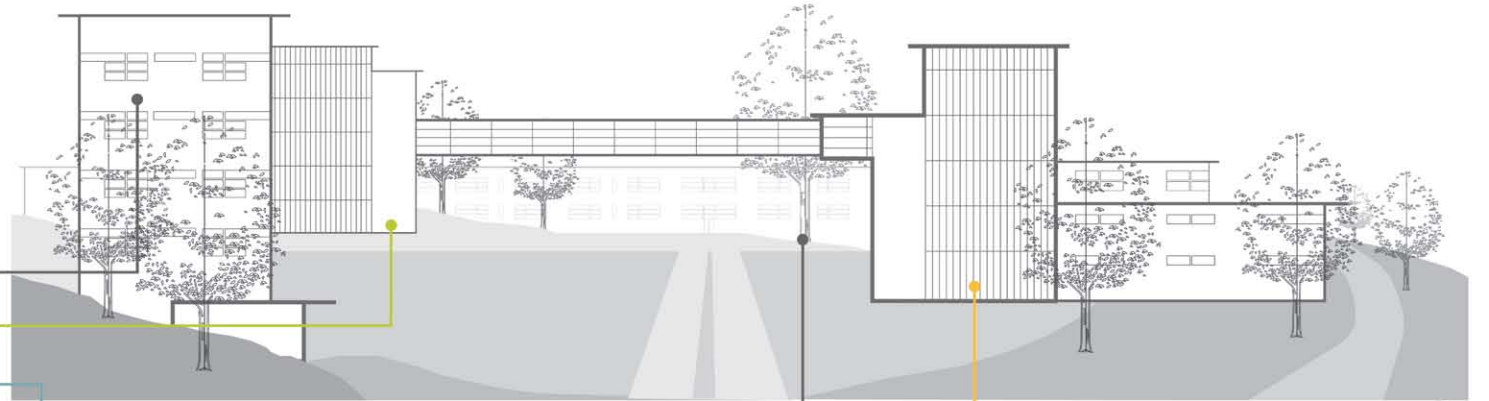


// PROGRAM COMPONENT

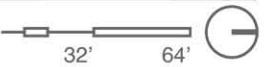
// VERTICAL CIRCULATION

// INTER-DEPARTMENTAL  
CIRCULATION CORRIDOR

// PUBLIC LOBBY + ENTRY



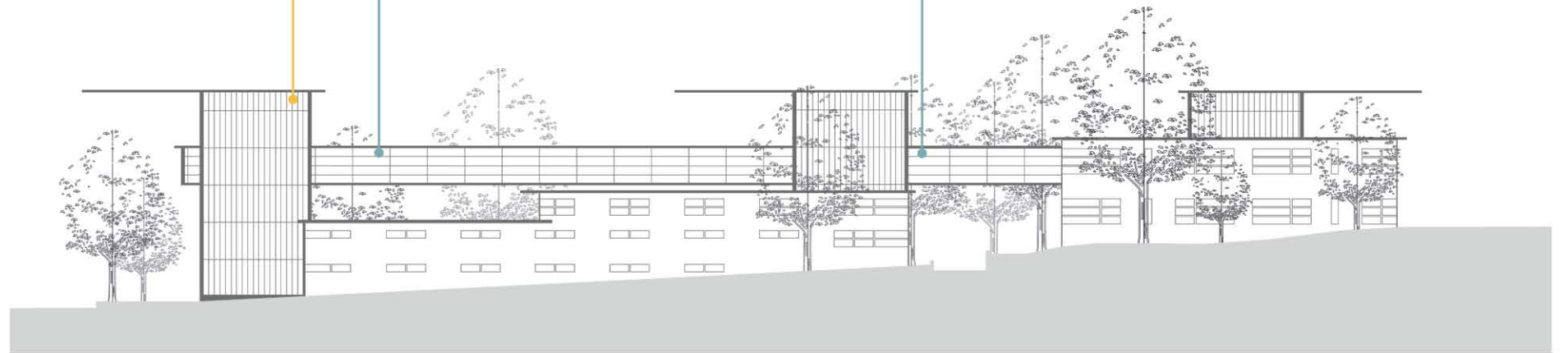
EAST ELEVATION  
SCALE- 1"=64'



// COMMON AESTHETICS

// VISUAL LANDMARKS

// VISIBLE CIRCULATION  
MODES



NORTH ELEVATION  
SCALE- 1"=64'

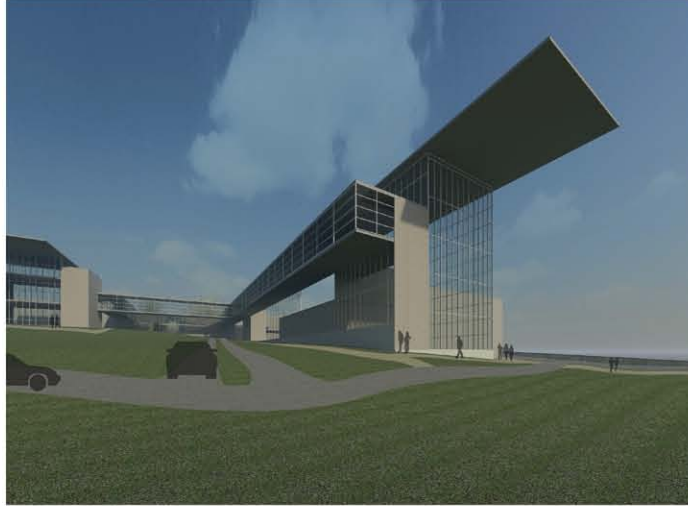




# PEACHTREE HILLS HOSPITAL

3-D MODEL:

NORTHEAST EXTERIOR:



NORTH EXTERIOR:



INTERIOR CIRCULATION:

