

**Rabbit Anti-Mammaglobin [EP249]: RM0122, RM0122RTU7**

**Intended Use:** For Research Use Only

**Description:** The Mammaglobin gene encodes a 10-kDa glycoprotein that is homolog to human Clara cell 10-kDa protein (CC10)/uteroglobin. SCGB2A2. Expression of the mammaglobin gene is highly restricted to the adult mammary gland. Antibody to Mammaglobin labels normal breast epithelial cells and breast tumor cells. It is a useful marker for identification of primary and metastatic breast cancer.

**Specifications**

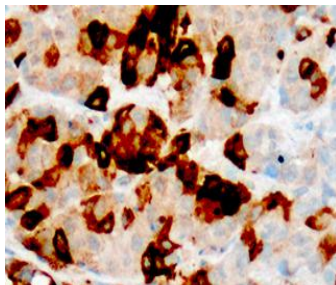
Clone: EP249  
 Source: Rabbit  
 Isotype: IgG  
 Reactivity: Human  
 Localization: Cytoplasm  
 Formulation: Antibody in PBS pH7.4, containing BSA and  $\leq 0.09\%$  sodium azide (NaN<sub>3</sub>)  
 Storage: Store at 2°- 8°C  
 Applications: IHC  
 Package:

Description	Catalog No.	Size
Mammaglobin Concentrated	RM0122	1 ml
Mammaglobin Prediluted	RM0122RTU7	7 ml

**IHC Procedure\***

Positive Control Tissue: Breast, breast cancer  
 Concentrated Dilution: 50-200  
 Pretreatment: EDTA pH8.0, 15 minutes using Pressure Cooker, or 30-60 minutes using water bath at 95°-99°C  
 Incubation Time and Temp: 30-60 minutes @ RT  
 Detection: Refer to the detection system manual

\* Result should be confirmed by an established diagnostic procedure.



FFPE human breast cancer stained with anti-Mammaglobin using DAB

**References:**

1. Cx43 suppresses mammary tumor metastasis to the lung in a Cx43 mutant mouse model of human disease. Plante I, et al. Oncogene: 2010.
2. Breast-specific expression of MGB1/mammaglobin: an examination of 480 tumors from various organs and clinicopathological analysis of MGB1-positive breast cancers. Sasaki E, et al. Mod Pathol 20:208-14, 2007.
3. Mammaglobin expression in lymph nodes is an important marker of metastatic breast carcinoma. Han JH, et al. Arch Pathol Lab Med 127:1330-4, 2003.
4. Detection of mammaglobin in the sera of patients with breast cancer. Fanger GR, et al. Tumour Biol 23:212-21, 2002.