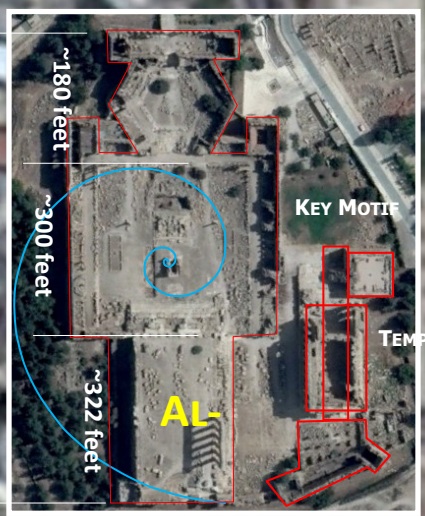


# GUARDIANS OF ZION'S GATES

The purpose of this study is to strongly suggest that the true location of the Holy of Holies or that of where the Temple of YHVH once stood and will on the Temple Mount in Jerusalem can be deciphered by the Ba'albek Temple Man template. In the continuing quest to ascertain where the true location of the Temples of YHVH once stood, the following evidence will be presented although it is merely a correlation and supposition based on the inference of a 'Temple Man' motif. Is such a template valid or Biblical? It is circumstantial evidence and the Bible does not out-right specify or infer that the sacred measurements given to Moses to build first the Tabernacle and then to King David's heart's desire to build a Temple depicted an anthropomorphic pattern. However, upon careful mathematical calculations and relationships, the various measurement that constituted the Tabernacle and the Temple structures appeared to be in such a composition. This notion has first been attributed to the work and research done by Tony Badillo from TempleSecrets.info. He used the Temple of Solomon to deduce various amazing compositions to show that in fact the Temple could be construed to depict that of a Temple-Man. Moreover, it was and is suggested that this anthropomorphic factor that is occurring is a divine pattern and reflection of Christ that is the measure and form of all that is. This notion of temples being fashioned in the form of a man is not uncommon since recorded history and humans started building temples.

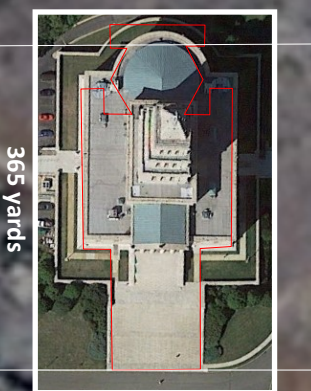
## ANTHROPOMORPHIC TEMPLE-MAN TEMPLATES

### TEMPLE OF BA'AL/ZEUS/JUPITER

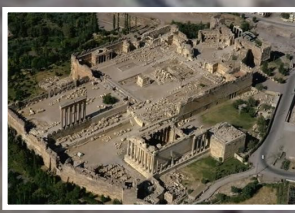


ANTHROPOMORPHIC 'ORION' WITH KEY TO SILVER GATE

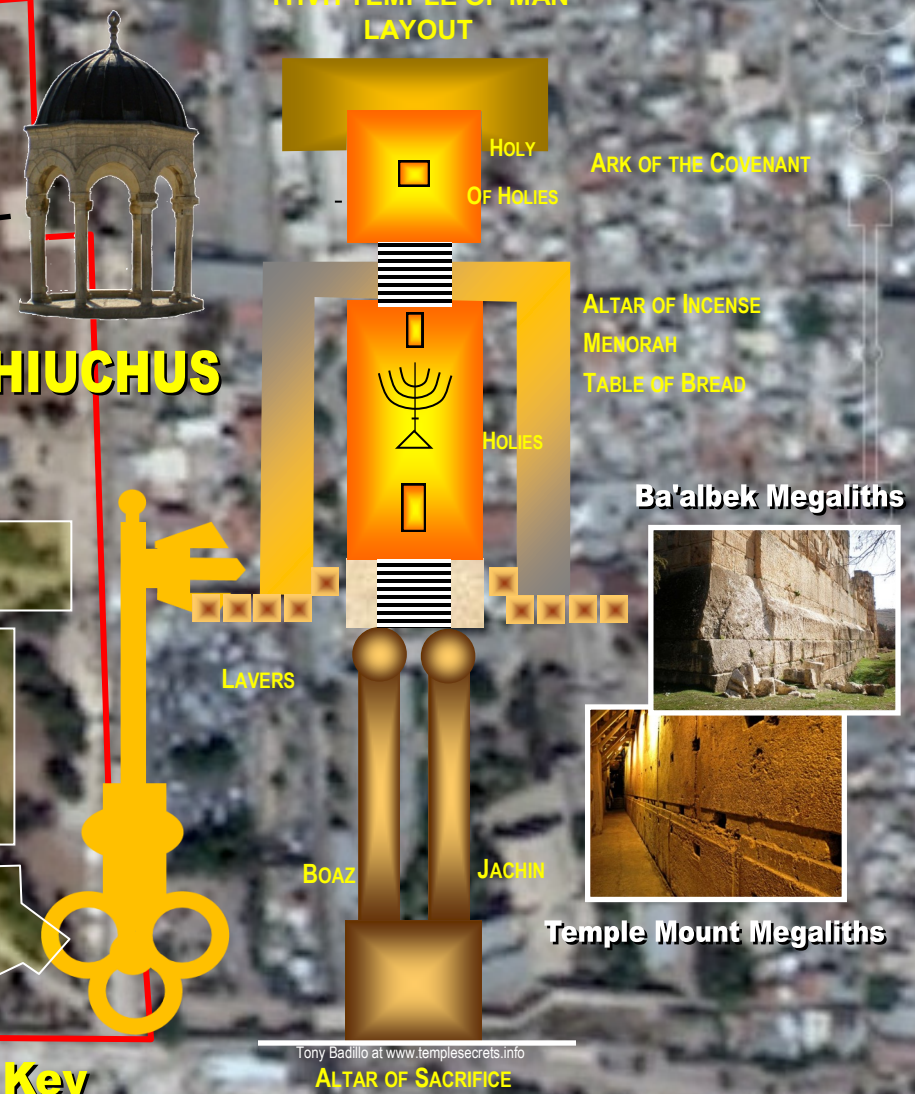
### WASHINGTON MASONIC MEMORIAL



### Baalbek Megaliths



### YHVH TEMPLE OF MAN LAYOUT



Tony Badillo at www.templesecrets.info