

Sacramento River Delta Historical Society

NEWSLETTER

“For what is the present, after all, but a growth out of the past.” – Walt Whitman

NEWSLETTER

VOLUME 30, NUMBER 2

DECEMBER 2010

President's Notes

Happy New Year!

What I wanted for Christmas was a slower calendar. I hope the one I received for 2011 cooperates!

2010 was a good year, albeit a fast one (it's not just me who thinks so, is it?) We had a busy Spring, a mellow summer and a fascinating Fall in SRDHS. After our summer break, our September meeting hosted Lawrence Tom, author of "Sacramento's Chinatown", one of the *Images of America* local history series. We learned a bit about the immigration into Sacramento and the early days, people and activities creating Sacramento's Chinatown.

November's general meeting was a real blast from the past for many of the SRDHS members. Mark Gaffney, owner of the Gaffney Display Company brought some of the actual animated characters and a great slide show of the old Breuner's Furniture Stores Christmas window displays. Remember those? So many of us counted that visit to Breuner's as one of their "official family holiday traditions". Mark's talk was so interesting as we learned how the characters were inspired, created and animated. Great fun and very nostalgic.

As we approach the New Year, we find some changes coming to your Board of Directors. For one, our Treasurer, Mindy Harding has had to step down, as she and her husband Nelson find themselves traveling too far and too frequently to make her comfortable continuing to hold the office. We'll miss her! Terry Alchorn, too, is ready to take a break from Directorship, so we're looking for someone to fill those shoes! SRDHS members who're expressing interest in becoming members of the Board are Mary Hanson and Barbara Damion. Congratulations and thanks to those ladies.

Before it can become official, of course, they'll need to be ratified at our General Meeting in January. Other seats on the board which are up for re-election include those held by Bobbie Collier, CJ Jensen, Marshall Pylman, and Joe Enos. Board members who still have another year to serve include Judy Culbertson, Phil Pezzaglia, Esther Koopman, Tom Herzog and me.

Our by-laws state that of the fourteen members of the Board of Directors, offices will include President, Vice-President, Recording and Corresponding Secretaries, a Treasurer, the Immediate Past President and eight Directors. The goal is to see that each community in our Delta is represented, and that one of the Directors holds the job of "Program Director" (and my vote is that Tom Herzog holds that job for perpetuity!) Most of these "Office jobs" are up for re-election/re-distribution as of December 31, 2010. Be prepared to listen to the recommendations from your Board as to whom the Nominating Committee recommends for each job, and to cast your vote. Be assured that there will be an opportunity to nominate yourself, if you'd like!

All of this and more will be part of the goings-on at our annual January General Meeting and Pot Luck Dinner which is scheduled for Tuesday, January 18, 2011 at 6 p.m. Please be on the lookout for an invitation postcard/reminder which will ask you to contribute something to the dinner. In years past, we've had 150 or more people, so please be mindful when preparing your dish. The more, the better!

I'm looking forward to seeing you all there, and in the meantime, Happy (slow) New Year and keep on making history!

Debbie Chan, President

Sacramento River Delta Historical Society

JANUARY GENERAL MEETING & ANNUAL POTLUCK

Tuesday, January 18, 2011 at 6:00 pm

Jean Harvie community Center 14273 River Road, Walnut Grove

Please bring food for 10: A—N Hot Dish O—S Salad T—Z Dessert

Please call Debbie Chan 916-775-1501 if you have any questions

Isleton – “Queen City”

Part 2 of 2

By Kathleen Graham Hutchinson

The first “Chinatown” located on the bank of Jackson Slough burned entirely in 1915. “Chinatown” relocated to the north and



burned again on May 31, 1926, and was rebuilt again. Several businesses in “Chinatown” today, flourished in both the first and second “Chinatowns” among them Quong Wo Sing Co., a hardware store begun in the 1870’s. In the 1880’s Y Toy took over the store from his father and was followed by his daughter Mrs. Chin. The store remained in business on Main Street. Other early Chinese businesses were the Wing Hing Lee Company established by Mrs. Owynag in 1906, Chan Kee Co., Chow Kee Co., Mow Wo Co. and Kim Kee Co. Chan Kee was a labor contractor and often “housed” over 200 Chinese laborers above his store (not all at once, they simply stored their belongings there when visiting town while working on outlying farms). The Bing Kong Tong building located at 17 Main Street and relocated after the 1926 fire to 29 Main Street. The second floor was the Tong meeting chamber and the first floor housed the Chinese School from 1926 – 1950.



In 1925, among businesses in the “Chinatown” and “Japan Town” (which was located on the south side of “Chinatown”) were: two auto repair shops, a Japanese “prep” school (probably a Japanese culture school), Japanese school, barber shop, grocery, hotel/boarding house, restaurant, drugstore, cobbler, two laundries, a Japanese hotel, notions shop, Isleton Chinese Association and a gambling hall. Underneath the streets in the Chinese section there is evidence of trap doors, tunnels, and alcoves which extended under the street. Delta Telephone Company lineman, Clyde Bishop, recalled a telephone pole which disappeared into an uncharted tunnel. Chinatown was full of gambling and prostitution which earned it the sobriquet “Paris of the West”.

By 1931 there was a wider list of businesses in “Chinatown” and “Japan Town”: at Main and H streets a Chinese restaurant in the two-story brick building with veranda and on Main street

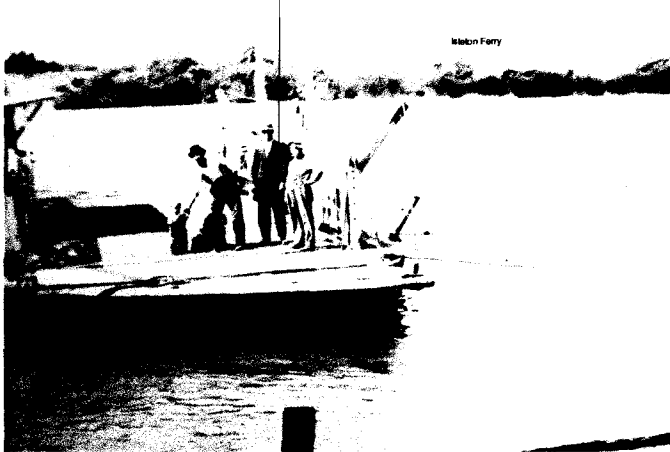
between H and E streets restaurants, pool halls, tobacconists, dry goods stores, a bootery and saddlery, barbershops (sometimes incorporating a pool table for the customers), a grocery and a fish store, boarding rooms, hotel, gambling halls, a herbalist combined with a grocery store, a meat market, a hardware store and an ice plant (which had storage space, freezing tanks, an office and an ice house).

The Great Western Power Company (absorbed by Pacific Gas & Electric Company) served Isleton, as did Delta Telephone and Telegraph Company, the Sacramento County Branch Library (the first county branch library on the River), a gravity flow water system and two horse troughs on Main Street. Thomas J. Mealer, George A. Knott, and Hart Fellows Smith all served as Justices of the Peace in the Isleton Judicial District. The Chamber of Commerce was founded in 1920 and incorporated as a non-profit in 1930. J. Wilbur Gardiner was its first president. (Gardiner was also founder and president of the Delta Asparagus Growers Association – the first asparagus association in the area.) Isleton was incorporated as a city May 20, 1923. Lester P. Gardiner held the office of Mayor from 1923-1940. Inaugural City Councilmen were: Dr. J.H. Lembach, Stanford M. Dickey, Joseph C. Crump, and Ida P. Gardiner – the first woman council member. J. Wilbur Gardiner and W.A. Hartin were the clerks; A.W. Ramsey was the Marshall and Sam Dorsey the night watchman. F.F. Atkinson, the city attorney, suggested house numbers and street signs to facilitate preparation of assessment rolls. The streets were dusty when dry; muddy when wet and always full of potholes. Therefore in 1923 the city’s first bonded indebtedness for \$50,000 was used to grade and pave the selected streets. A City Police Department was formed followed by the Isleton District Volunteer Fire Department. During World War II, Alice Perkins Heimbach was in charge of the Aircraft Look-out Station on top of City Hall. She also chaired the Isleton Red Cross and her Chevrolet automobile was designated the “City Emergency Vehicle.”

The California Navigation Company and the Southern Pacific Transportation Company riverboats were the primary carries who stopped at Isleton: freighters, mail packets, and passenger packets. The Isleton wharf had a waiting room for passengers. Pre-prohibition Bouldin Island wine was shipped from Isleton. Commutes were made on the steam launches “Oriole” or “Lafayette” or on the Lauritzen launches. The “Alice E.”, the



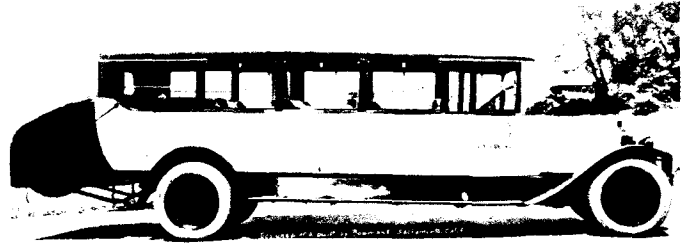
school launch, piloted by Garland Lent and "Chief" Elliott carried youngsters to Rio Vista High School. Youngsters sometimes took unexpected swims when carelessly jumping aboard or disembarking and according to Walter Lund, the penny-ante games played on board were "very interesting." The school launch was replaced by the school jitney. The "Triangle Ferry" connected Rio Vista, the foot of Grand Island and the Point of Brannan Island. The old Isleton Ferry, handcrafted by George Fisher and Sam Dorsey, operated day and night to Grand Island, except during high water.



In 1929 the Sacramento Southern Railroad (Walnut Grove Branch Line) was extended to Isleton. The railroad traversed Tyler Island below Walnut Grove and crossed Georgiana Slough on a single span bascule drawbridge which was lowered only to allow trains to pass. The U.S. Coast Guard required the bridge not to interfere with river traffic. The railroad regained ground level into the Isleton Depot, situated on an unnamed road in back of town. A McKee self-propelled car commuted daily round trip to Sacramento and carried freight in the midsection and passengers in the rear. Otherwise freight trains hauled sugar beets, pears, grain, and canned goods to Sacramento for dispersal and transshipment. At the depot the American Railway Express agent and Western Union Telegraph agent had an office. Although proposed as a mainline, the line never extended beyond Isleton, mainly due to reorganization of the Southern Pacific Transportation Company. Other reasons such as flood possibilities and unstable peat land also prevented extension. An engine tipped on its side at the depot after heavy rains. After the flood of '72 the line was abandoned between Walnut Grove and Isleton. In 1982, the tracks were removed and the bridge demolished.

The levee tops were sandy, muddy quagmires or otherwise impassable. During the summer months, until 1903, Ed Bryan (of Rosebud hold-up fame) drove a four horse stage, owned by his uncle, round trip daily to Sacramento. Martin Juhl and "Jitney Joe" Tolman also drove horse stages and later auto stages. In 1919 the first Rio Vista Bridge was opened. A chartered steamer brought dignitaries from Sacramento, including Governor Hiram Johnson, to take part in the celebration. The Isleton Bridge opened in 1923. The levee road, finally paved in the mid 1920's carried the designation "Victory Highway" State Route 24 (now #160) was channeled through the Isleton business district leaving the levee top for a short distance.

The Rio Vista Transit Company operated a bus/charabanc service between Rio Vista, Isleton and Rio Vista Junction. "Beany" Freitas drove the charabanc. The River Auto Stage, later known as the Gibson Line Stage, operated between the Delta towns and Sacramento, Stockton, Marysville and Woodland.



**RIO VISTA TRANSIT COMPANY
STAGE SERVICE**

BETWEEN ISLETON, RIO VISTA AND RIO VISTA JUNCTION - CONNECTING WITH
SAN FRANCISCO AND SACRAMENTO RAILWAY - FIVE ROUND TRIPS DAILY
M. L. ISHAM, RIO VISTA, CALIFORNIA

Early social life centered around fraternal organizations. Georgiana Grange #122 Patrons of Husbandry was organized in 1873 and built the Grange Hall in 1880. Later the site was the former Sav-a-Lot, and then it became de Jack's. The officers were F.M. Ketnell, Hart F. Smith, C.P. Hensley, J.H. Staten, F.M. Poole, J.P. Norman, Peter Hansen, Geo. S. Knott, J.N. Holt, Mary A. Hensley, Sarah Rany, Sarah Poole and Louisa Holt. The Grange flourished until the 1890's. The I.O.O.F. was established in 1889 and met in the Gardiner Improvement Company building on the second floor. In 1875, the Georgiana Lodge I.O.G.T. (International Order of Grand Templars) established a chapter. Early members were: J.B. Allington, Mrs. M.T. Shafer, Mrs. J.B. Allington, V. Arrasmith, Flora Hensley, A.M. Wolfe, H. Anderson, Robert Webb, Annie Allington, Angie Davis, J. Allington, Laura Wells, Sarah Poole, F.M. Kitrell, R.F. Davis, Herbert Crew, L.J. Wells, Ida Poole, C. Allington, M.A. Allington, Ella Poole, A. Allington, S. Kitrell, Charles Davis, N.J. Poole, Martha Poole, and Alexander Wylie. After the 1890's the I.D.E.S. Lodge took over the Grange Hall and renamed it the I.D.E.S. Hall. The Hogate Rebekah Lodge was founded April 27, 1907, its name honoring Philip Hogate Gardiner. Dues were \$2.50 per year and within a year 28 members were initiated. The nine charter members were Lucretia de Back, Mary Mealer, Nellie Kercheval, Adaline Runyon, Theodore Poole, Hart F. Smith, Paul de Back, Thomas Mealer and Alice Bryan. Lucretia de Back was the first Noble Grand. The Isleton Lions Club was chartered in 1973.

The Annual Isleton Asparagus Festival was held from 1925 until 1939. At the first festival, school children dressed as asparagus spears "grew" out of trenches near the grandstands during opening ceremonies. Between 20,000 and 30,000 people attended yearly. Asparagus cooked in huge cauldrons was free to the public and the bar on Main Street received special dispensation during Prohibition. Pacific Gas and Electric Company donated stoves and refrigerators as prizes for the baking contest at City Hall Park. Near the grandstand booths lined the length of Second Street. Baseball games, track meets,

outboard motorboat races, motorcycle tricks shows, fireworks, eating contests, band concerts, aquatic show, dog trials all were held. The Midway was near the I.D.E.S. Hall. The Grand Ball was held on Wood Island (opposite Rio Vista) and in later years at the I.D.E.S. Hall. Alice Perkins Heimbach was crowned the first and tenth festival queen.

The successor to the Asparagus Festival, after a thirty-five year history, in 1974, was the May Festival. Alice Bryan was the first Grand Marshall and Charlene Glaze was Chairman. In 1987 the name and date of the festival were changed to the Isleton Crawdad Festival and the event was held in June. (It is now being held in Red Bluff, Tehama County.)

Other social activities included picnics in the oak grove at the H.F. Smith Ranch, visits to Ida Island (see information to follow), the annual June Ball in Courtland, the annual riverboat excursion to Stockton with picnicking and dancing on board (passengers were picked up at landings along the way), dancing in the dance hall located on the Isleton Hotel site above the blacksmith shop, baseball, and the South County Track Meet. The Isleton baseball team was a member of the semi-pro Delta league. Its supporters followed the team wherever it played. When the team played in Antioch, the fans traveled there in one of the Lauritzen launches, the "Dutchess" or the "Empress", there being no bridge spanning the San Joaquin River until 1926. The Sacramento South County Invitational Track Meets were held yearly at Isleton and all the rural schools throughout the south county participated. In 1989 the Isleton Ball Park was renamed Fred V. Wilson Ball Park in honor of the late city councilman's long service. A public Easter Egg Hunt sponsored by the Filipino Society of Isleton was last held in 1974. The I.D.E.S. sponsors the Holy Ghost Festival every year. Nearby on Ida Island, the Vieira family leased an end of the island which became known as Sycamore Park.

IDA ISLAND – Around 1900 Domingos Vieira bought Ida Island. He rented it to Japanese farmers. After his death his son John farmed one end of the island and released the resort end of the island which became known as "Sycamore Park". Isletonians regularly used the park for recreation and community activities. After the death of the park operator, the Vieira family took over and installed boat ramps, docking facilities, rental houses and a restaurant.

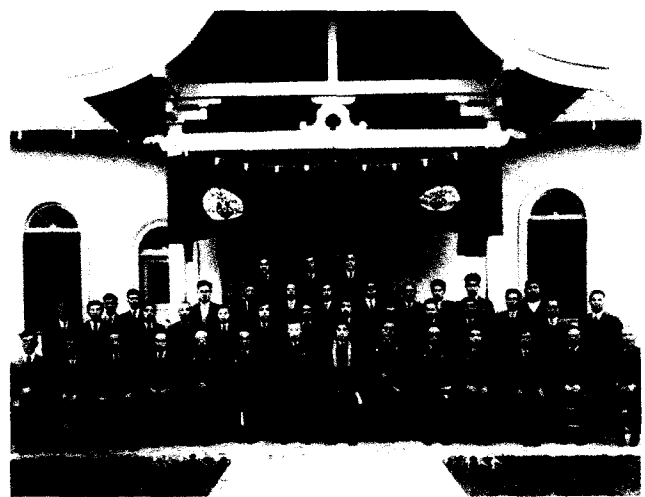
On Chinese New Year a big celebration was held. Everyone in Isleton attended, visiting "Chinatown". Chinese shopkeepers held open house and offered visitors bitter tea, sugared melon and coconut. Exploding firecrackers caused great excitement. The firecrackers were strung from balconies and then were lit. When they exploded they filled the streets with green, yellow, and red paper shreds.

Various churches played an important part in Isleton social life. In 1875, J.W. Bell organized the Isleton Circuit of the Southern Methodist Church. The circuit included the area from Walnut Grove to and including Sherman Island. The circuit riders went from island to island on horseback, crossing the river by ferry or rowboat. In 1876, the first full-time minister in Isleton was Rev. T.D. Lewis who built the parsonage at a cost of

\$100. Joseph Hedgepeth became pastor in 1877. Church services were held at the parsonage until 1877, at which time the Grange Hall was rented for services. Services were held every other week so that the pastor could ride the circuit the intervening week. In 1887 the Rev. John Hutton was appointed to the district. By 1890, Rev. Mr. Andrews had assumed the pastorship. Between 1897 and 1901 the enthusiastic pastor Rev. A.L. Paul initiated services upriver at Ryde. Paul traveled to and from Ryde by mailboat. By 1904, the church was associated with the Methodist-Episcopal Church. A new building was constructed at a cost of \$950 on what later became the intersection of A and Third streets. In 1916/17 the church was moved to a nearby corner lot. At the same time, parishioners built a new parsonage. Eventually, the parsonage became the Church Education Building and a new parsonage was purchased in the "Delta Acres" subdivision north of town. In 1955, a new education building was constructed and shortly thereafter the sanctuary rebuilt. The Church remained unharmed by the Flood of '72 but suffered a disastrous fire on December 2, 1986 which badly damaged the sanctuary and patio. The Church then rose from the ashes and survives today.

The Roman Catholic Church services were held in the I.O.O.F. Hall and later in the I.D.E.S. Hall. In 1945 under the direction of Fr. McElwee, the first sanctuary was built at the corner of Jackson Boulevard. In 1958, a building which housed a parish hall and catechism classrooms was completed under the auspices of Fr. Joseph Monsher. In 1961 under the leadership of Fr. Mello the present sanctuary, dedicated to St. Theresa, was built and the original sanctuary transformed into a parsonage.

The Buddhist Church served the Japanese community before World War II but did not reopen after the war. The altar furnishings were installed in the Walnut Grove Buddhist Church which was badly vandalized during World War II. The rededicated Walnut Grove Buddhist Church serves all Delta Buddhists.



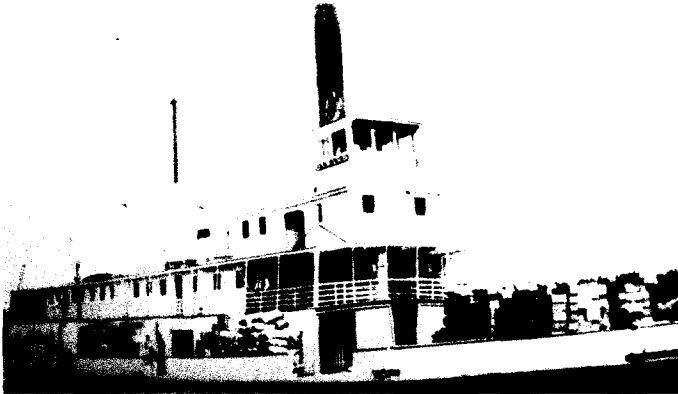
In 1967, the Church of All Nations opened its doors in the old Isleton Buddhist Church building. The Rev. Hosea Parham presided for 5 years. In co-operation with the Salvation Army the Church fed Isleton area senior citizens at noon, five days a week.

Some of the Delta Chinese attended services at a Joss House where food offerings were placed before a golden shrine. Otherwise, they joined one of the above described churches.

The Chinese were served by a benevolent tong (association), Bing Kong Tong which served the social and funeral needs of the Chinese community, as they were elsewhere in the Delta.

Funerals were also a social occasion. The riverboats "Pride of the River", "Onward", and "Isleton" were chartered and

Early boat - Steamboat Onward 1877



collected family and friends of the deceased up and down the River. Sometimes the boat transported the corpse to the service too. The mourners with remembrances in hand, disembarked at Rio Vista and walked to one of the town's cemeteries, completing the obsequies.

The first Isleton School met in the Grange Hall, the date at least 1880, at which time Edward C. Humphrey was the teacher and Stanford Dickey trustee. By 1890 Miss Ida Foster was teacher. The first schoolhouse was located at the site of the present day liquor store. It burned in 1916 and was rebuilt on the Main Street extension. This schoolhouse later became the Sam Dorsey residence. Nearby "country" schools were Andrus School and Georgiana School. Andrus School was located halfway between the back of town and the Golden State Cannery (today B & W Resort) on lower Andrus Island. Georgiana School was near the Isleton Bridge and in 1890 its schoolmaster was E.P. Howe. In 1920 the Isleton Union School District was formed. The first Board of Trustees were Paul de Back, William Hutton, Theodore Poole, Joe Hodapp and Phil Everly. A \$100,000 bond was floated to build a new building. Theodore Poole, Joe Hodapp and Phil Everly selected a site at Union and C streets and in 1921 the new brick school building was dedicated. In 1925 two additional buildings were built to house the Oriental School and another for the migratory children. In 1942 all the children were housed under one roof. In 1967 a gym was added and in 1972 they were flooded. After the flood all the buildings except the Oriental School were demolished. In 1921, the PTA (Parents - Teachers Association) was organized and Mrs. Paul de Back was elected president. By 1942, the consolidated district consisted of Riverside and Sherman schools both on Sherman Island, Georgiana, Andres and Isleton schools all on Andrus Island and Brannan School on Brannan Island. Later Oulton School on Twitchell Island joined. In 1967 Beaver

Union School at Ryde joined the district. For a number of years before consolidation, all eighth graders from Isleton traveled to Walnut Grove to take the eighth grade exit examination. Vernon Hutton commented, "It scared the kids to death. It's a wonder any of us graduated." Students traveled to Rio Vista for high school. In 1968, to conform to new State laws, the River Delta Unified School District was formed, and the Isleton district joined Courtland, Clarksburg, Walnut Grove, Rio Vista, Ryer, Montezuma and Bates districts.

Isleton was one of only four Sacramento County school districts which was segregated. The Oriental School on Main Street between D and E streets and the Migratory School were both constructed in 1925. The Oriental School was demolished and the site is now a parking lot; the Migratory School located between what is today a park and a liquor store, was demolished after the Flood of '72 and the site occupied by new elementary school classrooms.

In 1948 Manual Valine built the Del Rio Hotel on property purchased from the Gardiner Improvement Company. No hotel had been built in Isleton since 1904. Riverside Elevators at the Isleton Bridge opened in 1945 with a grain storage capacity of 35,000 tons. The tonnage capacity has significantly increased over the years. Nevertheless, after World War II, Isleton began a slow decline. Its population at the beginning of the War was 2,100 and declined to 980 by 1980. Canneries closed or moved away. The pickle works closed in 1982 and the Dunn-Bonetti dealership closed in 1981. From 1955-65 the Isleton Cannery only canned asparagus and closed after 1965; it was destroyed by the Fire Department in an exercise. In 1983 the cottages were demolished.



In the late 1960's the Bank of America built a new office as did the Post Office. After the Library burned in the Hutton house in 1930, it was moved next to the drug store. A new County Branch Library occupied premises in the Post Office Building and then moved to its present location. In 1984, the Bank of America closed and consolidated the Isleton office with the Rio Vista office which left Isleton without a bank for the first time since 1918. In 1989 the Bank of Rio Vista reopened the office as its Isleton Branch, which has just now closed. In 1979, both the new Community Center and the new Fire House opened.

Isleton is today the smallest city in Sacramento County. Visit the new Isleton Museum and learn more! It is located on Main Street across from Rogelio's Restaurant, next to the Bing Kong Tong Building (where it hopes to move to after renovation).

Sources

"The Sacramento Union"

Sanborn Insurance Maps

"The Delta Herald" & "Isleton Journal"

The Tule Breakers by Edward Dutra & John Thompson

Images of America: Isleton by Bruce Crawford

Images of America: Sacramento Southern Railroad by
Kevin Hechteman

Vernon Hutton – Oral History

June Watamura – Oral History

C.W. Hennige manuscript

The Heart of the Delta by Charlene MacDonald

Jean Harvie "Notes on Isleton"

California Drawbridges by Bernard Winn

Various Articles

History of Sacramento County by Thompson & West
1980

Recipes from "A California Cookbook"

Compiled by Sara Williamson 1917

Republished by granddaughter Susan Evind 2009

Doughnuts (Mrs. Pylman)

Three eggs, 1 cup sugar, ½ cup butter, 3 pints bread sponge. Mix with hands as soft as possible. Let rise. Mold again. Flour board. Roll dough about half an inch thick. Cut out with ring. Fry in boiling oil or lard, not less than half an hour.

Lettuce Holland Style (Mrs. Pylman)

Cut a slice of bacon—or more if needed—into dice and fry in sauce-pan. Have lettuce ready in dish, and just before serving pour a little vinegar into the bacon fat, stirring and seasoning with pepper (not too much). Then pour over lettuce.

Asparagus with Parmesan Cheese (Durini)

Place the asparagus in boiling water and, when boiled, add salt. Cook until tender, drain and cool. Then cut asparagus in small pieces, using all but the tough part of the stalks. Put in bake pan or casserole one-half cup olive oil and one-third butter and a clove of garlic. Cover with Parmesan cheese and bake.

Asparagus is very nice creamed, but it is as well to use the short or broken pieces for this dish. Cook the heads and very little of the stalk and make a drawn butter sauce, serving on toast. (Mrs. Pylman)

Canadian Salad Dressing (Mrs. Pylman)

Yolk of egg, tablespoon sugar, teaspoon flour, ½ teaspoon mustard, ½ cup milk, small chunk of butter. Cook to boiling point, and then pour in ½ cup of vinegar. Stir constantly. Pour this over cabbage cut very fine, while the cabbage is hot. If this dressing is used for lettuce it can be mixed with a little lemon juice, enough to thin it, and is a very good substitute for mayonnaise.

Rice Holland Style (Mrs. Amos Pylman, Hood, Sacramento)
Wash the rice in several waters until the last water is absolutely clear, and pick out all the dark grains. Have ready boiling water. and cook the rice in this until all the water is absorbed. The proportions are about twice liquid to the dry rice. When the rice is even with the water, stir in about a quart of milk (or less if the quantity of rice is small). Let this cook up in the rice, on the back of the stove. Rice cooked in this manner is delicious, every grain being perfect.

Water cress salad, seasoned with pepper, salt, paprika and a little garlic, with vinegar, is very palatable. The garlic adds much to the tastiness of this simple salad.

Tidbit of Interest



Jean Harvie age 15

SRDHS 2011 SCHEDULE

January 18.....	General Meeting/Annual Potluck
February 15.....	Board Meeting
March 15.....	General Meeting
April 19.....	Board Meeting
May 17.....	General Meeting
June 21.....	Board Meeting
June Newsletter	
July/August.....	Summer Break
September 20.....	General Meeting
October 18.....	Board Meeting
November 15.....	General Meeting
December.....	Board Meeting
December Newsletter	

RESOURCE CENTER NEWS

Come and see some of the wonderful treasures donated to the Resource Center at the annual potluck on January 18th. Help us identify some of the people in photographs displayed.

WELCOME NEW MEMBERS

Michael Pieretti from Courtland
 Jim Shanks Ranch from Walnut Grove

CONTENTS

President’s Notes.....	1
January Potluck Notice.....	1
“Isleton – ‘Queen City’”	2 - 6
“A California Cookbook Recipes.....	6
Tidbits of Interest.....	6
SRDHS 2011 Schedule.....	7
Resource Center News.....	7
New Members	7
SRDHS Notices.....	7

MEMORIAL CONTRIBUTIONS

We would like to thank all those who made memorial contributions to the Sacramento River Delta Historical Society and mourn the passing of former Delta Historical Society members Captain Lois Toni Henry, Lucille Jane Peck, Mildred May Nikula, Ann Sorrells and Rita Weeks.

DO YOU WANT TO CONTINUE TO RECEIVE THIS GREAT PUBLICATION???

Then make sure you pay your 2010 dues – Use this form or one of our handy dues envelopes

Name: _____
 Address: _____
 City, State, Zip: _____
 Phone: _____
 E-Mail: _____

- I’m paying Annual dues for the following year(s):
 2010 Other _____
 \$25.00 a year for Annual Membership
- I’ve enclosed \$150 to become a Lifetime Member
- I’d like to register as an Honorary Member – Free to members 80 years and older

Please mail this form with a check payable to SRDHS to:

SRDHS Membership
 P.O. Box 293, Walnut Grove, CA 95690

INFORMATION

Sacramento River Delta Historical Society web site is srdhs.org. Please view and enjoy the information. If you wish to email the resource center, the email address is srdhs@riverdeltawireless.com.

NEWSLETTER STAFF

Editor.....Kathleen Hutchinson
 Design/Layout.....Esther Koopman

*The Sacramento River Delta Historical Society publishes the Sacramento River Delta Society Newsletter twice a year.