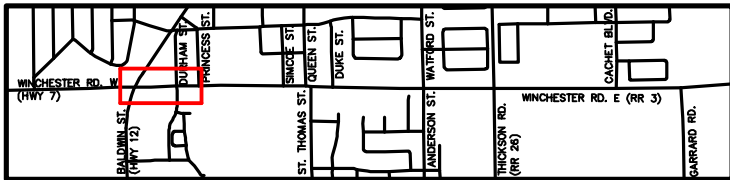


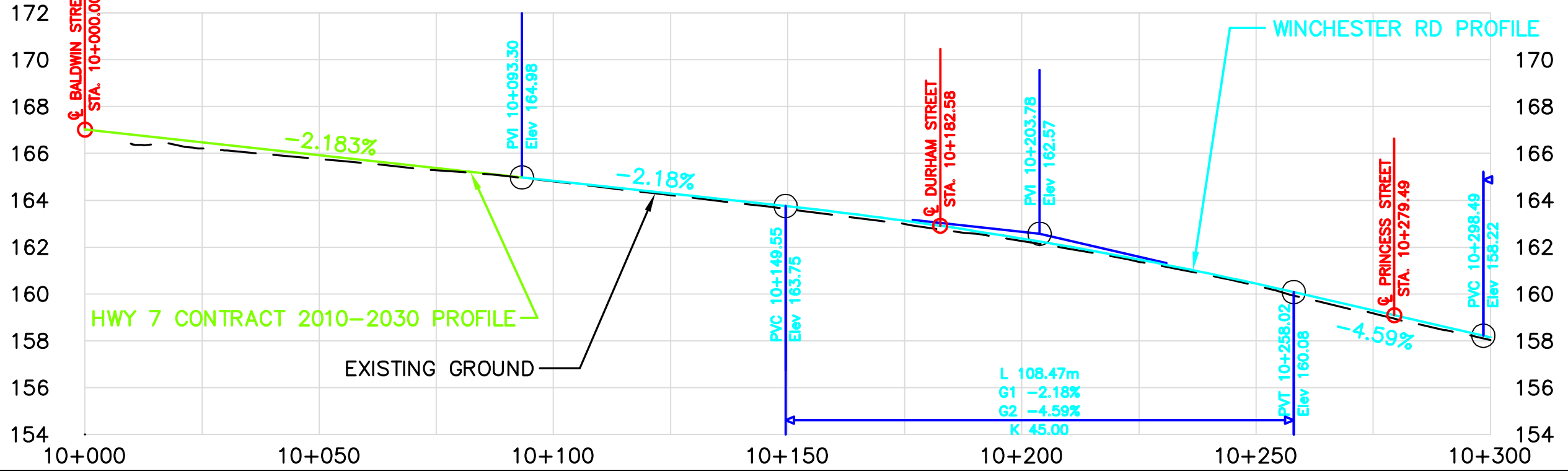
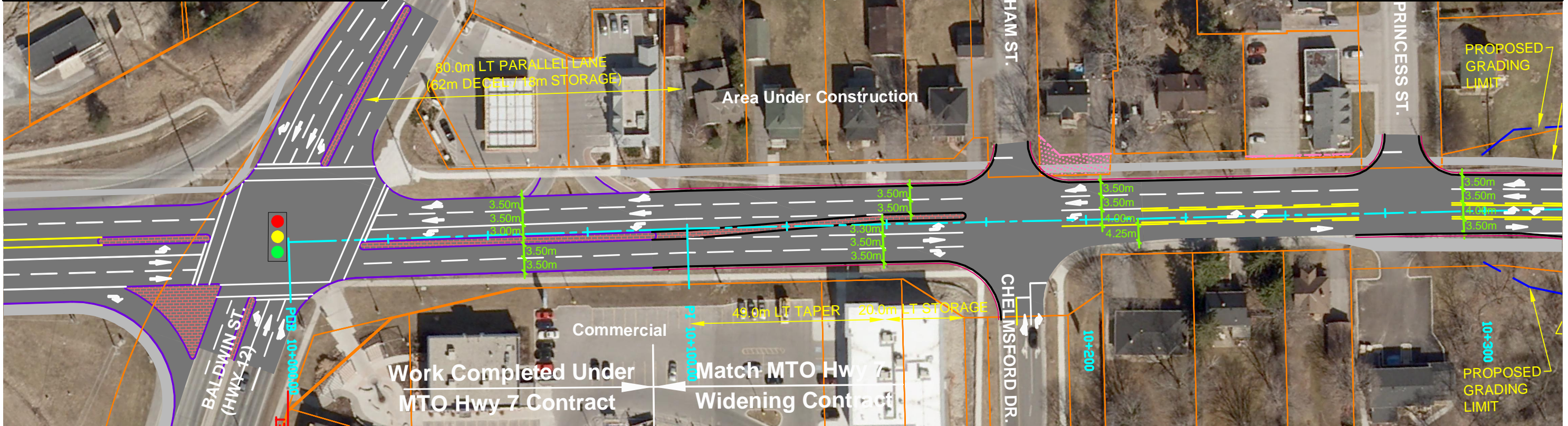
DRAWING NAME: Winchester Plate REC-01w-pro.dwg
 SAVED BY: mcgregor
 PLOT DATE: May 27, 2013
 SAVE DATE: October 9, 2012



2010 ORTHOPHOTOGRAPHY PROVIDED BY © FIRST BASE SOLUTIONS INC.
 © 2008 MPAC AND ITS SUPPLIERS. ALL RIGHTS RESERVED. NOT A PLAN OF SURVEY.
 © TERANET ENTERPRISES INC. AND ITS SUPPLIERS. ALL RIGHTS RESERVED. NOT A PLAN OF SURVEY.

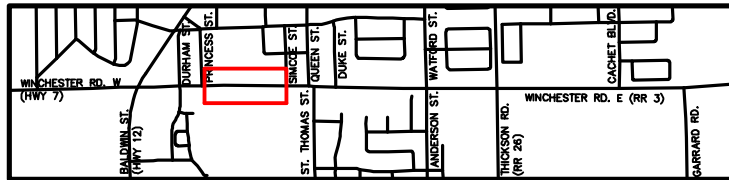
LEGEND

- Existing Property Lines/ROW
- Asphalt Roadway/Curb & Gutter
- Sidewalk or Roadway Shoulder
- Raised Median Hard Surface
- Property Requirement

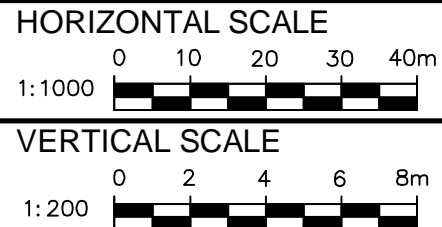
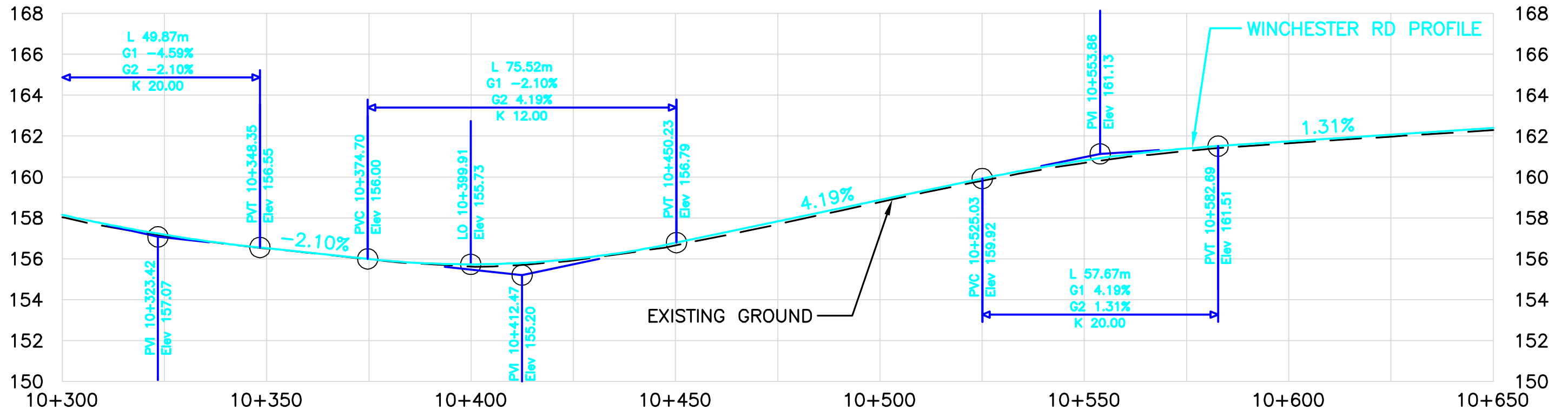
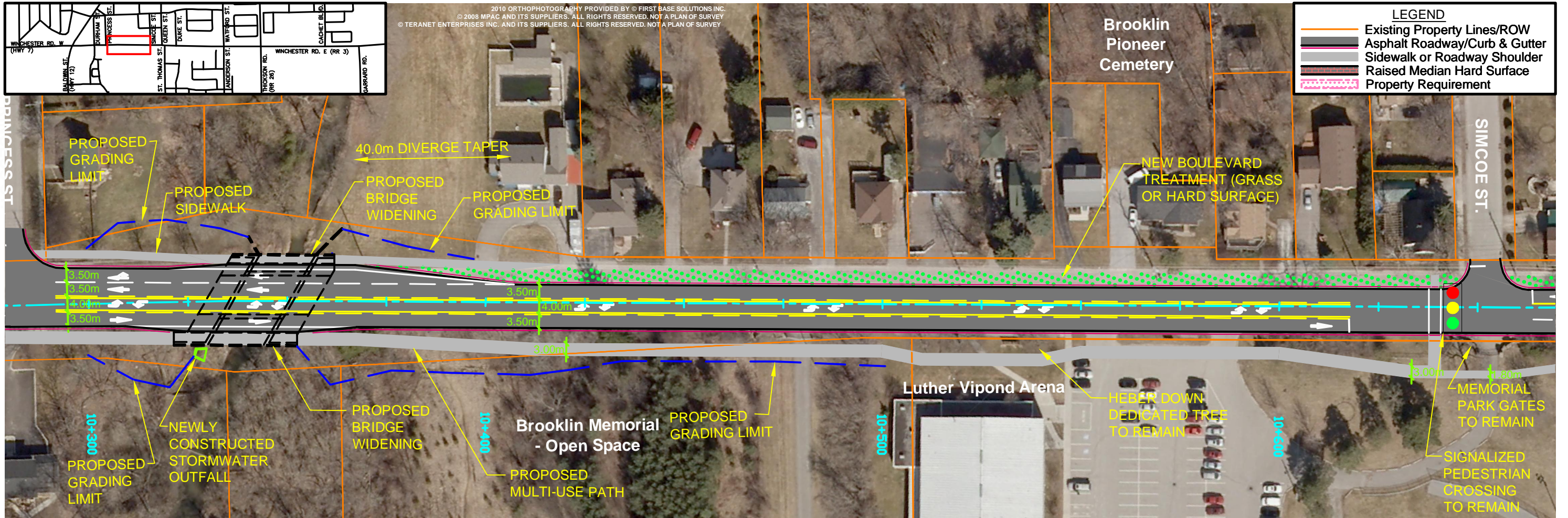


		HORIZONTAL SCALE 1:1000 		WINCHESTER ROAD IMPROVEMENTS CLASS ENVIRONMENTAL ASSESSMENT AECOM PROJECT NO: 60118993	PREFERRED DESIGN FROM 50m W. OF BALDWIN STREET TO 20m E. OF PRINCESS STREET	PLAN 01
		VERTICAL SCALE 1:200 				

DRAWING NAME: Winchester Plate REC-02w-pro.dwg
 SAVED BY: mcgregorr
 PLOT DATE: May 27, 2013
 SAVE DATE: October 9, 2012



2010 ORTHOPHOTOGRAPHY PROVIDED BY © FIRST BASE SOLUTIONS INC.
 © 2008 MPAC AND ITS SUPPLIERS. ALL RIGHTS RESERVED. NOT A PLAN OF SURVEY
 © TERANET ENTERPRISES INC. AND ITS SUPPLIERS. ALL RIGHTS RESERVED. NOT A PLAN OF SURVEY

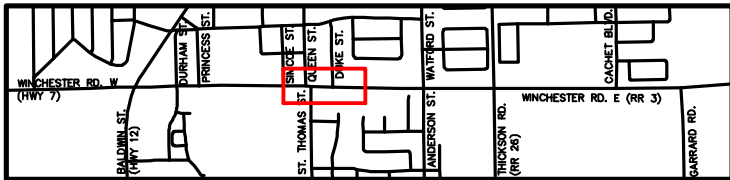


WINCHESTER ROAD IMPROVEMENTS
 CLASS ENVIRONMENTAL ASSESSMENT
 AECOM PROJECT NO: 60118993

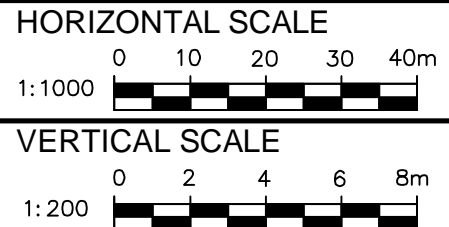
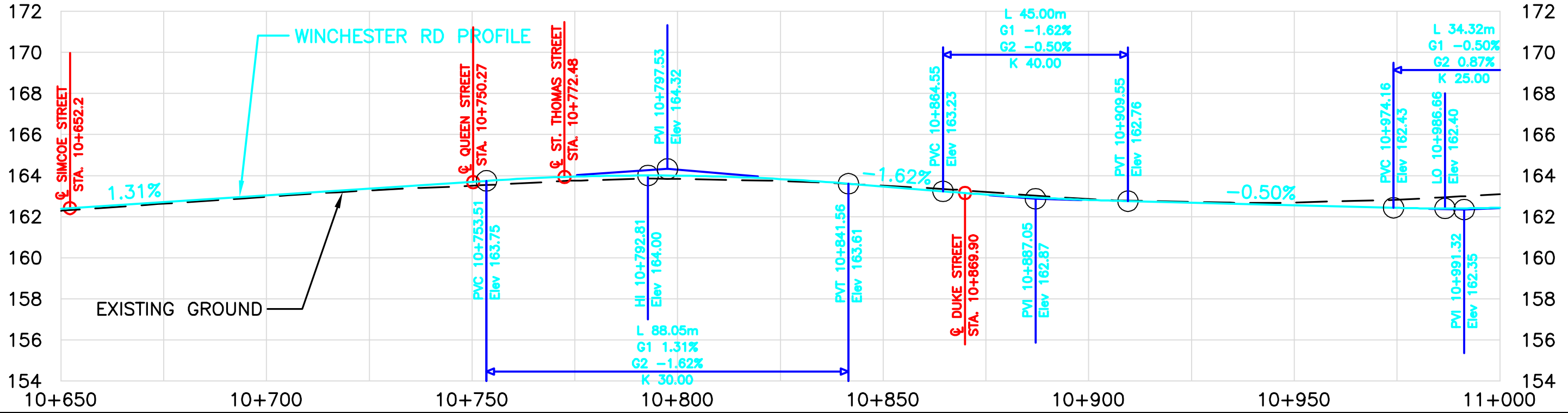
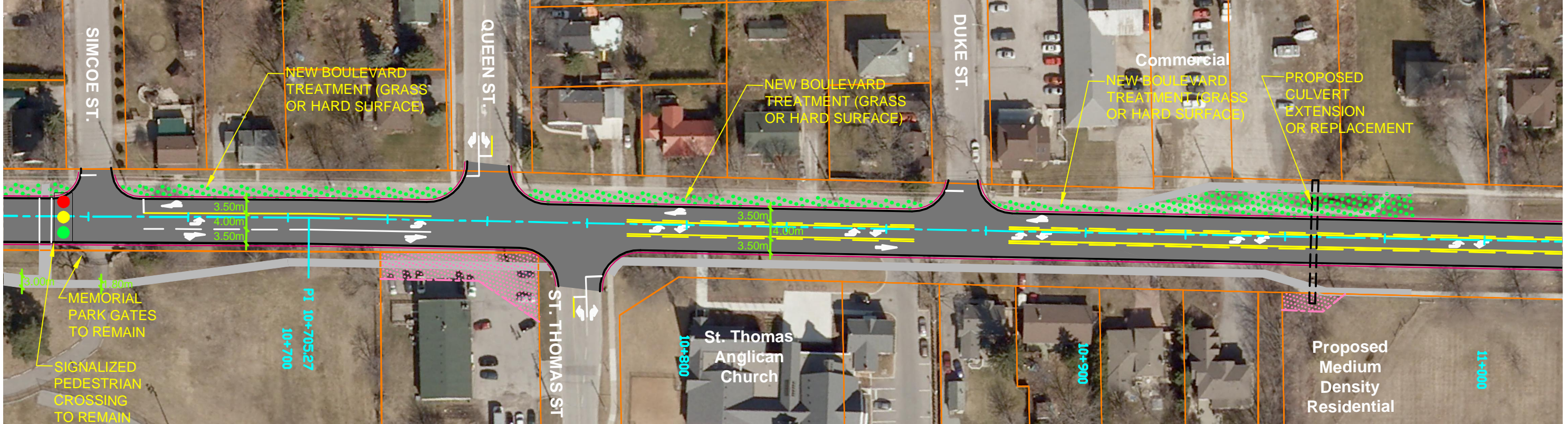
PREFERRED DESIGN
 FROM 20m E. OF PRINCESS STREET
 TO SIMCOE STREET

PLAN
 02

DRAWING NAME: Winchester Plate REC-03w-pro.dwg
 SAVED BY: mcgregorr
 PLOT DATE: May 27, 2013
 SAVE DATE: October 9, 2012



2010 ORTHOPHOTOGRAPHY PROVIDED BY © FIRST BASE SOLUTIONS INC.
 © 2008 MPAC AND ITS SUPPLIERS. ALL RIGHTS RESERVED. NOT A PLAN OF SURVEY
 © TERANET ENTERPRISES INC. AND ITS SUPPLIERS. ALL RIGHTS RESERVED. NOT A PLAN OF SURVEY

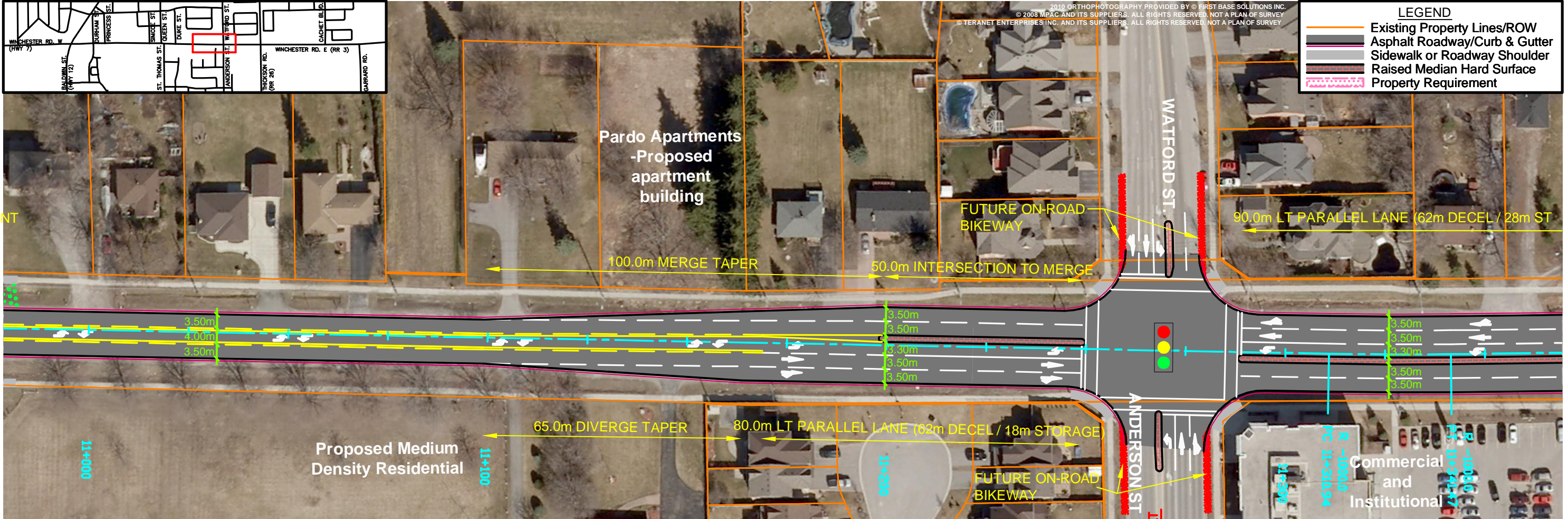
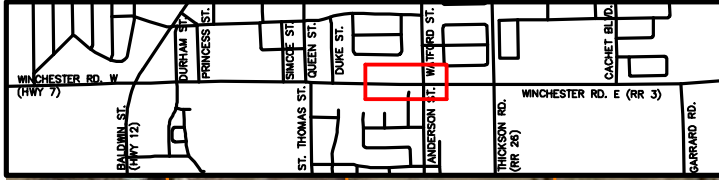


WINCHESTER ROAD IMPROVEMENTS
 CLASS ENVIRONMENTAL ASSESSMENT
 AECOM PROJECT NO: 60118993

PREFERRED DESIGN
 FROM SIMCOE STREET
 TO 130m E. OF DUKE STREET

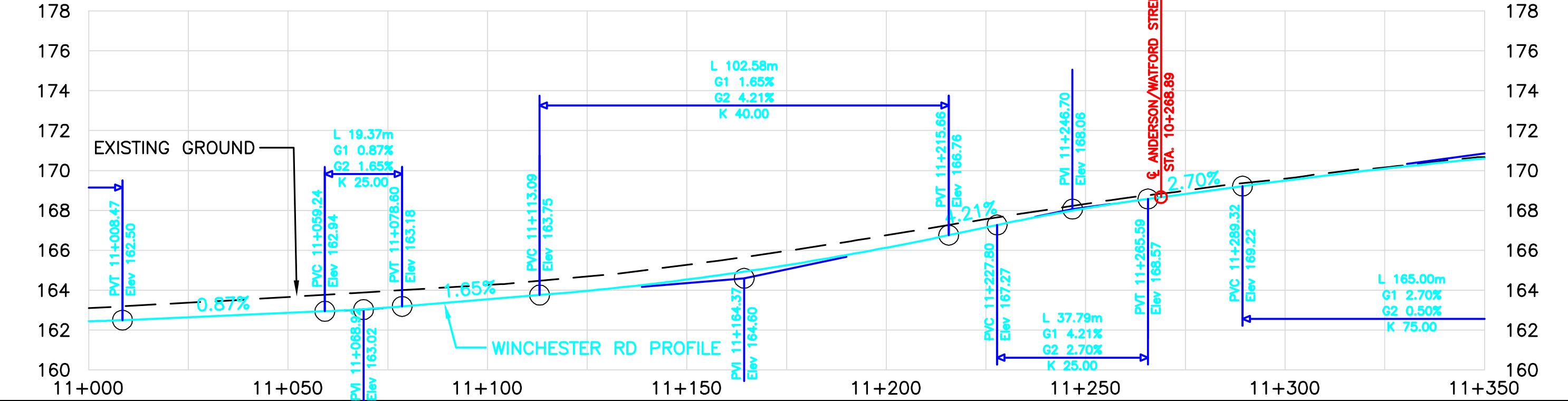
PLAN
 03

DRAWING NAME: Winchester Plate REC-04w-pro.dwg
 SAVED BY: mcgregorr
 PLOT DATE: May 27, 2013
 SAVE DATE: October 9, 2012



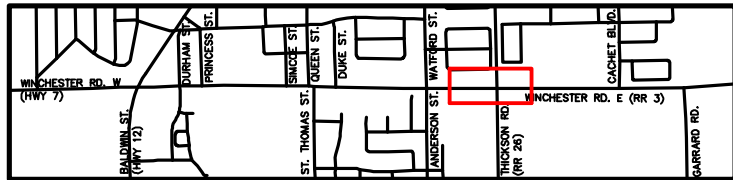
LEGEND

- Existing Property Lines/ROW
- Asphalt Roadway/Curb & Gutter
- Sidewalk or Roadway Shoulder
- Raised Median Hard Surface
- Property Requirement

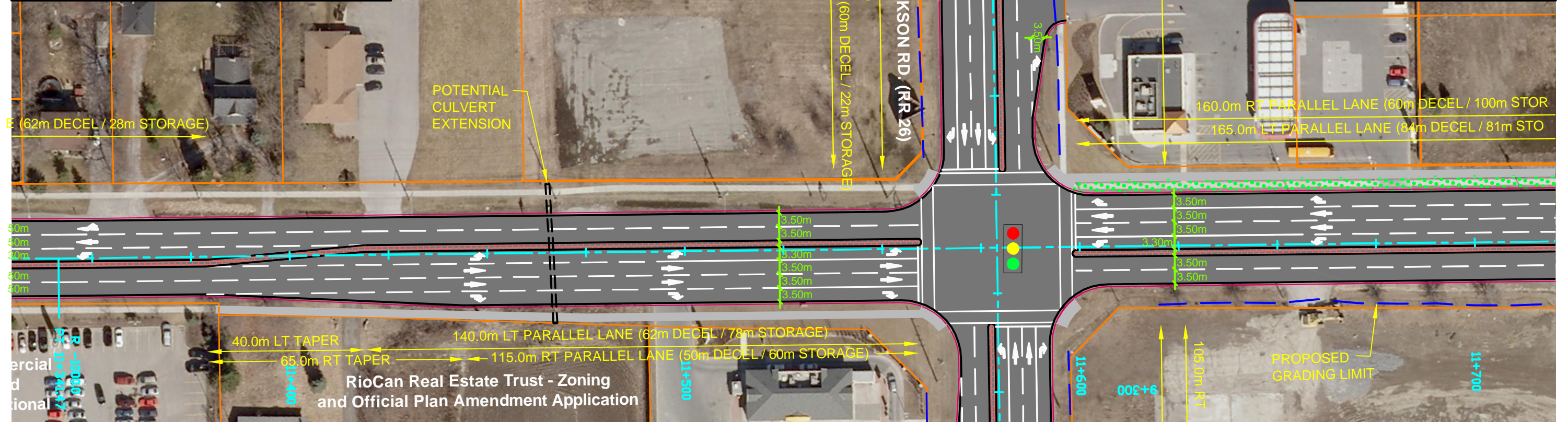


		<p>HORIZONTAL SCALE 1:1000</p> <p>VERTICAL SCALE 1:200</p>		<p>WINCHESTER ROAD IMPROVEMENTS CLASS ENVIRONMENTAL ASSESSMENT AECOM PROJECT NO: 60118993</p>	<p>PREFERRED DESIGN FROM 130m E. OF DUKE STREET TO 70m E. OF ANDERSON STREET/ WATFORD STREET</p>	<p>PLAN 04</p>
--	--	--	--	---	--	---------------------------

DRAWING NAME: Winchester Plate REC-05w-pro.dwg
 SAVED BY: mcgregorr
 SAVE DATE: October 9, 2012
 PLOT DATE: May 27, 2013

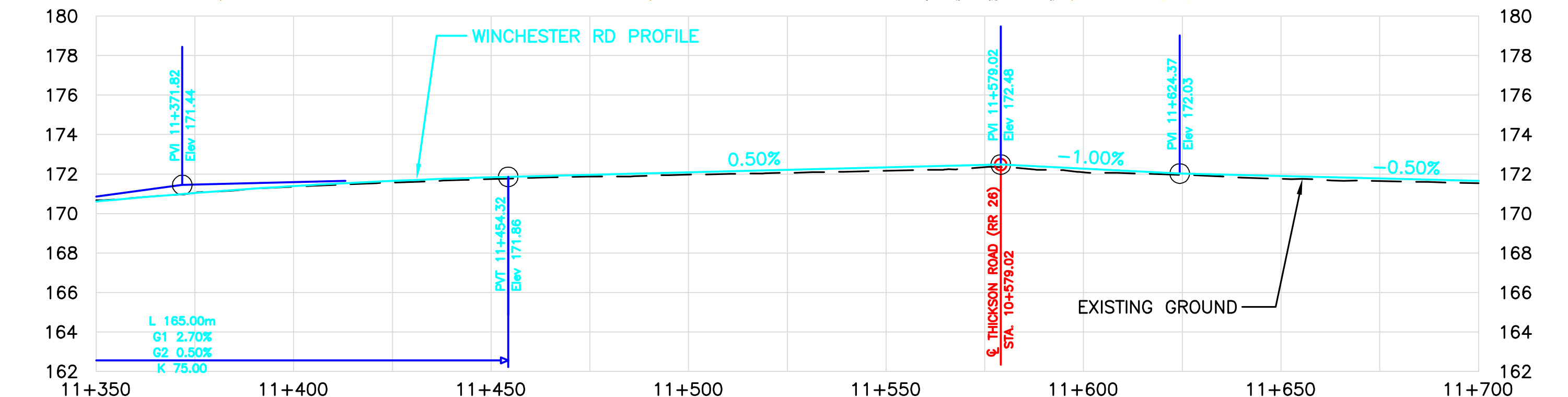


2010 ORTHOPHOTOGRAPHY PROVIDED BY © FIRST BASE SOLUTIONS INC.
 © 2008 MPAC AND ITS SUPPLIERS. ALL RIGHTS RESERVED. NOT A PLAN OF SURVEY
 © TERANET ENTERPRISES INC. AND ITS SUPPLIERS. ALL RIGHTS RESERVED. NOT A PLAN OF SURVEY



LEGEND

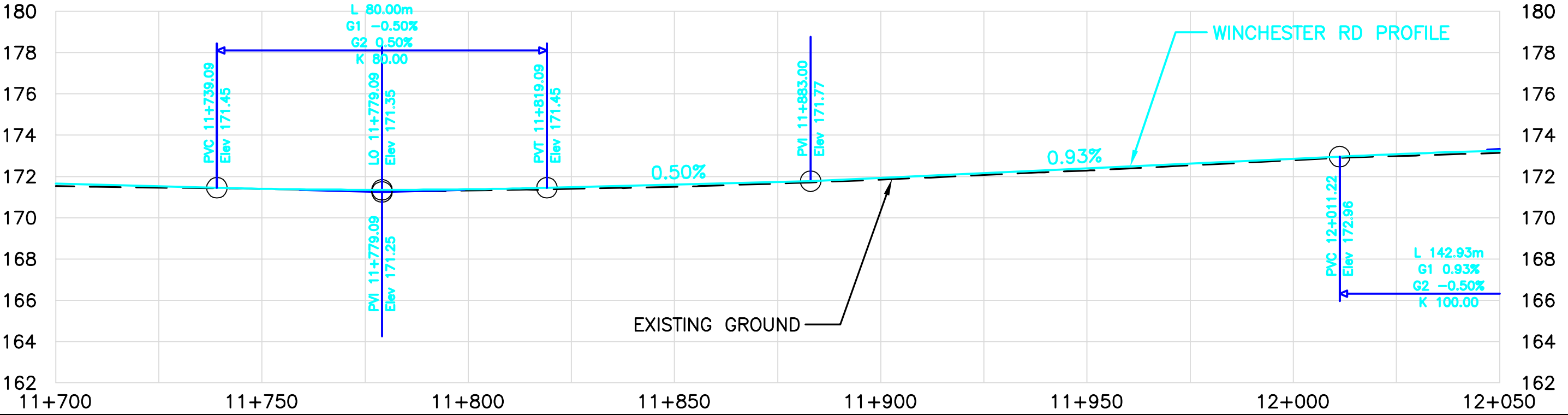
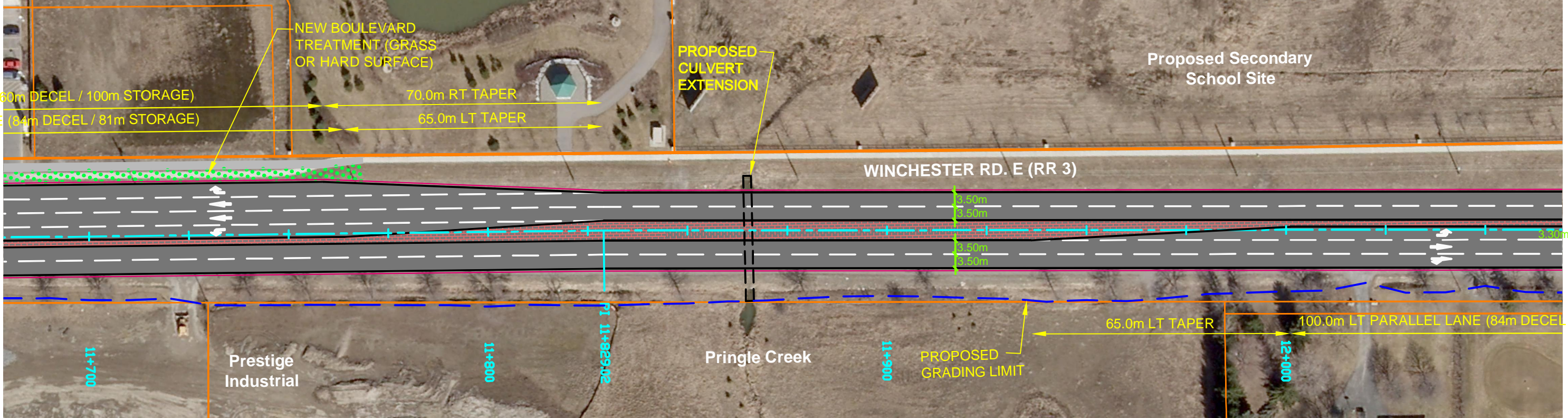
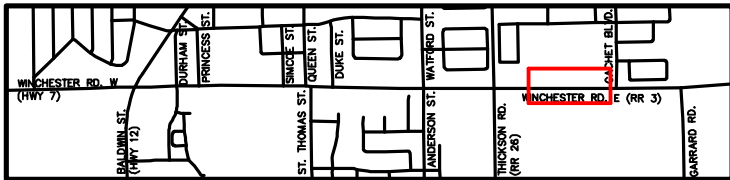
- Existing Property Lines/ROW
- Asphalt Roadway/Curb & Gutter
- Sidewalk or Roadway Shoulder
- Raised Median Hard Surface
- Property Requirement



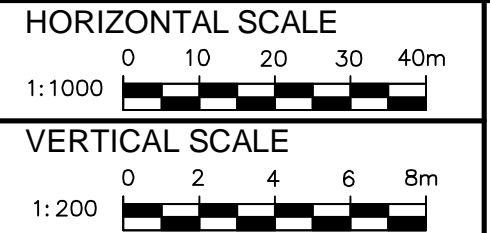
		HORIZONTAL SCALE 1:1000 		WINCHESTER ROAD IMPROVEMENTS CLASS ENVIRONMENTAL ASSESSMENT AECOM PROJECT NO: 60118993	PREFERRED DESIGN FROM 70m E. OF ANDERSON STREET/WATFORD STREET TO 140m E. OF THICKSON ROAD	PLAN 05
		VERTICAL SCALE 1:200 				

LEGEND

-  Existing Property Lines/ROW
-  Asphalt Roadway/Curb & Gutter
-  Sidewalk or Roadway Shoulder
-  Raised Median Hard Surface
-  Property Requirement



DRAWING NAME: Winchester PLATE REC-06w-pro.dwg
 SAVED BY: mcgregorr
 PLOT DATE: May 27, 2013
 SAVE DATE: October 9, 2012

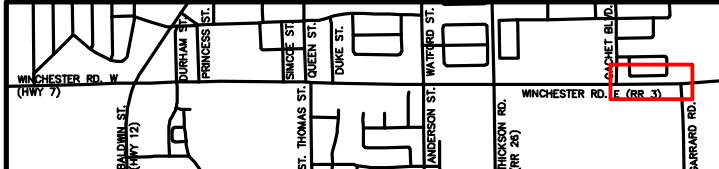


WINCHESTER ROAD IMPROVEMENTS
 CLASS ENVIRONMENTAL ASSESSMENT
 AECOM PROJECT NO: 60118993

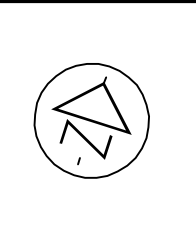
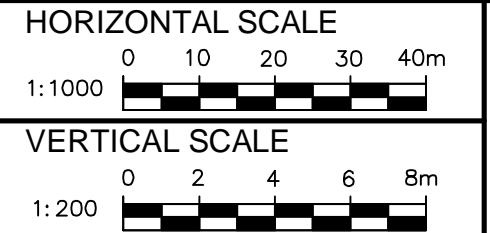
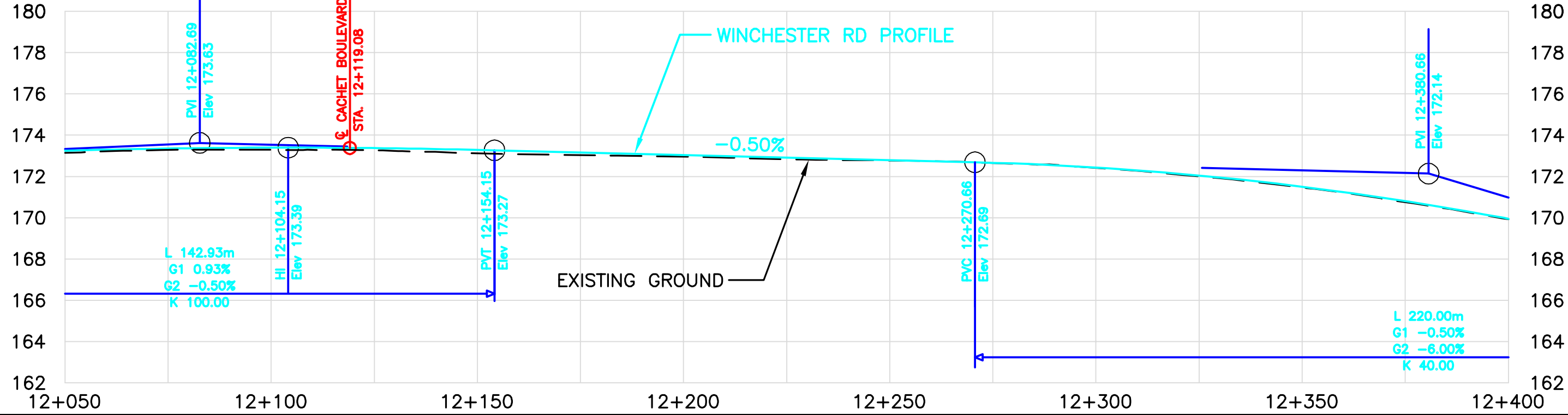
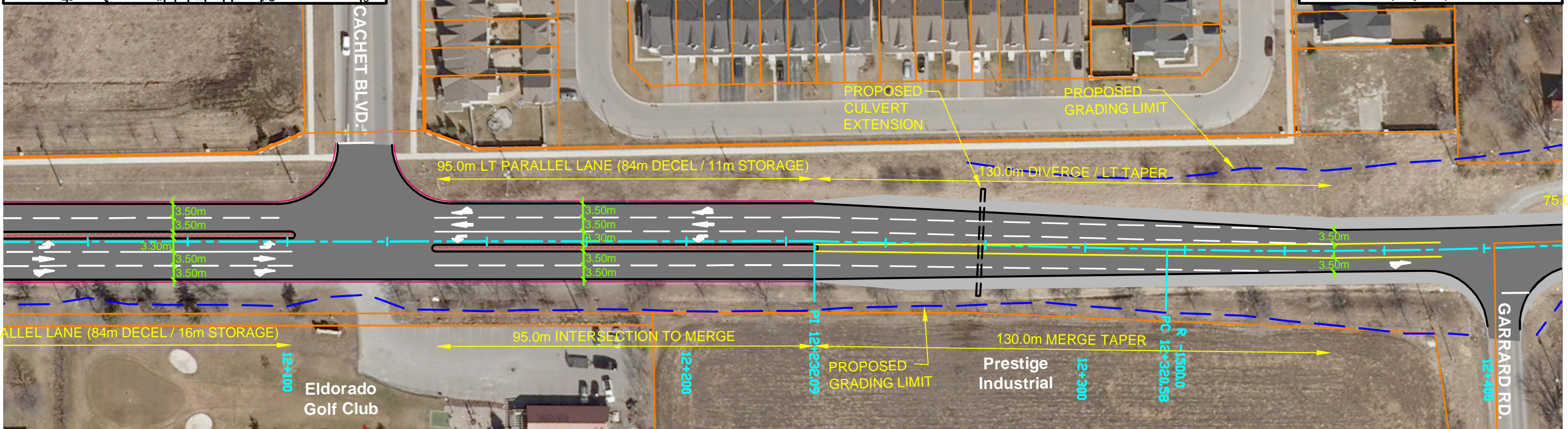
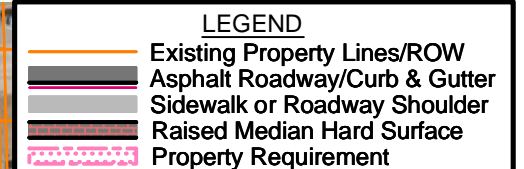
PREFERRED DESIGN
 FROM 140m E. OF THICKSON ROAD
 TO 70m W. OF CACHET BOULEVARD

PLAN
 06

DRAWING NAME: Winchester Plate REC-07w-pro.dwg
 SAVED BY: mcgregorr
 PLOT DATE: May 27, 2013
 SAVE DATE: October 9, 2012



2010 ORTHOPHOTOGRAPHY PROVIDED BY © FIRST BASE SOLUTIONS INC.
 © 2008 MPAC AND ITS SUPPLIERS. ALL RIGHTS RESERVED. NOT A PLAN OF SURVEY
 © TERANET ENTERPRISES INC. AND ITS SUPPLIERS. ALL RIGHTS RESERVED. NOT A PLAN OF SURVEY



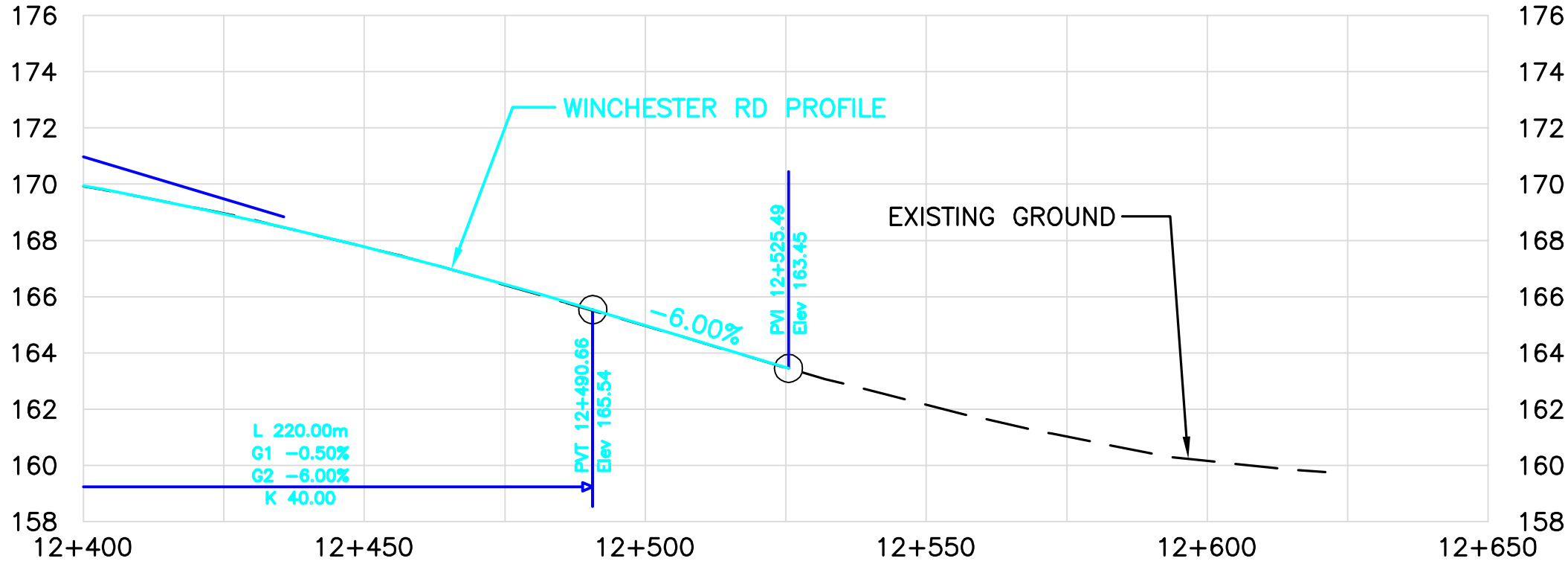
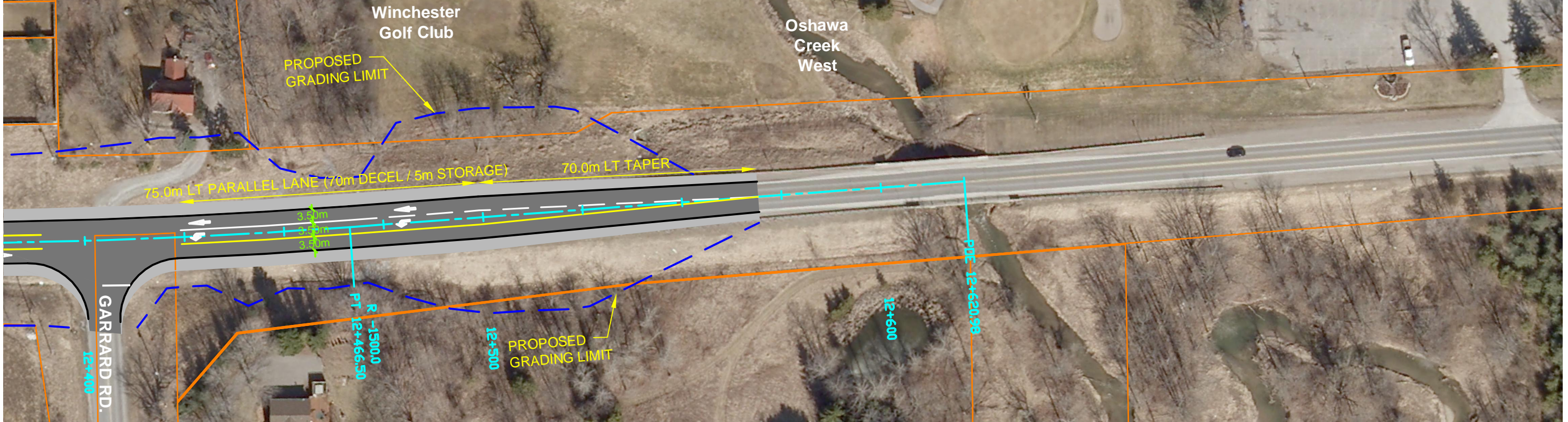
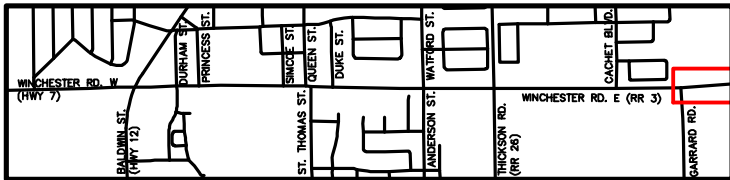
WINCHESTER ROAD IMPROVEMENTS
 CLASS ENVIRONMENTAL ASSESSMENT
 AECOM PROJECT NO: 60118993

PREFERRED DESIGN
 FROM 70m W. OF CACHET
 BOULEVARD TO GARRARD ROAD

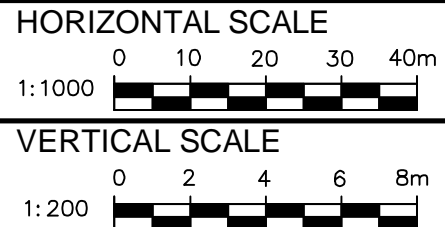
PLAN
 07

LEGEND

-  Existing Property Lines/ROW
-  Asphalt Roadway/Curb & Gutter
-  Sidewalk or Roadway Shoulder
-  Raised Median Hard Surface
-  Property Requirement



DRAWING NAME: Winchester PLATE REC-08w-pro.dwg
 SAVED BY: mcgregorr
 SAVE DATE: October 9, 2012
 PLOT DATE: May 27, 2013

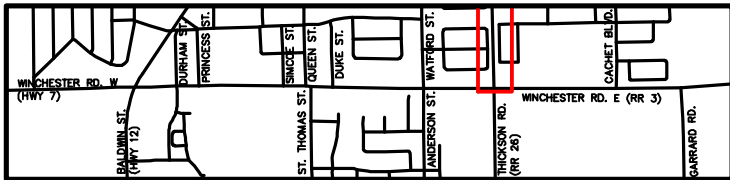


WINCHESTER ROAD IMPROVEMENTS
 CLASS ENVIRONMENTAL ASSESSMENT
 AECOM PROJECT NO: 60118993

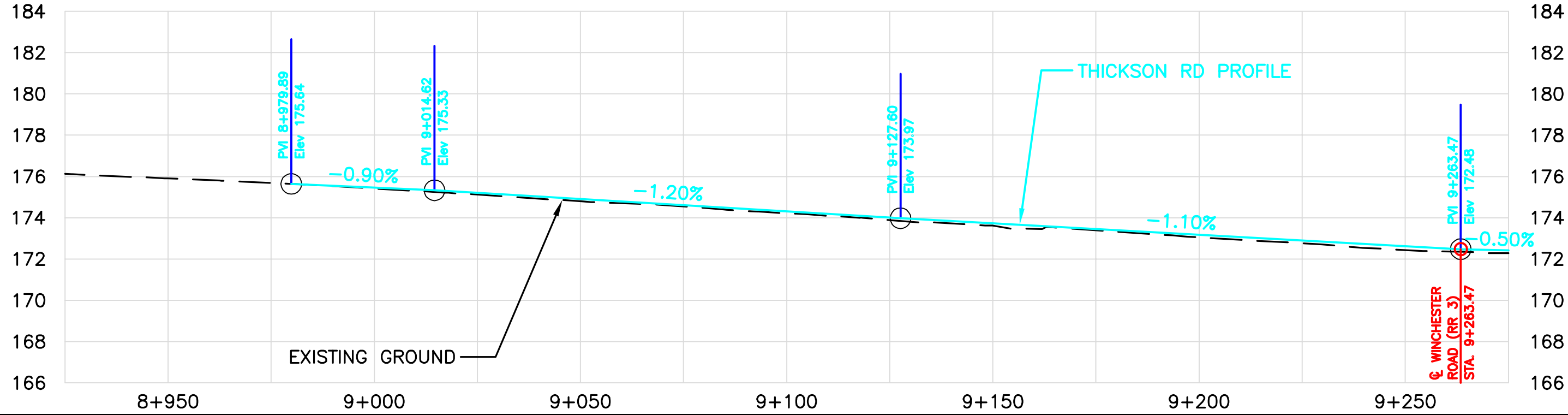
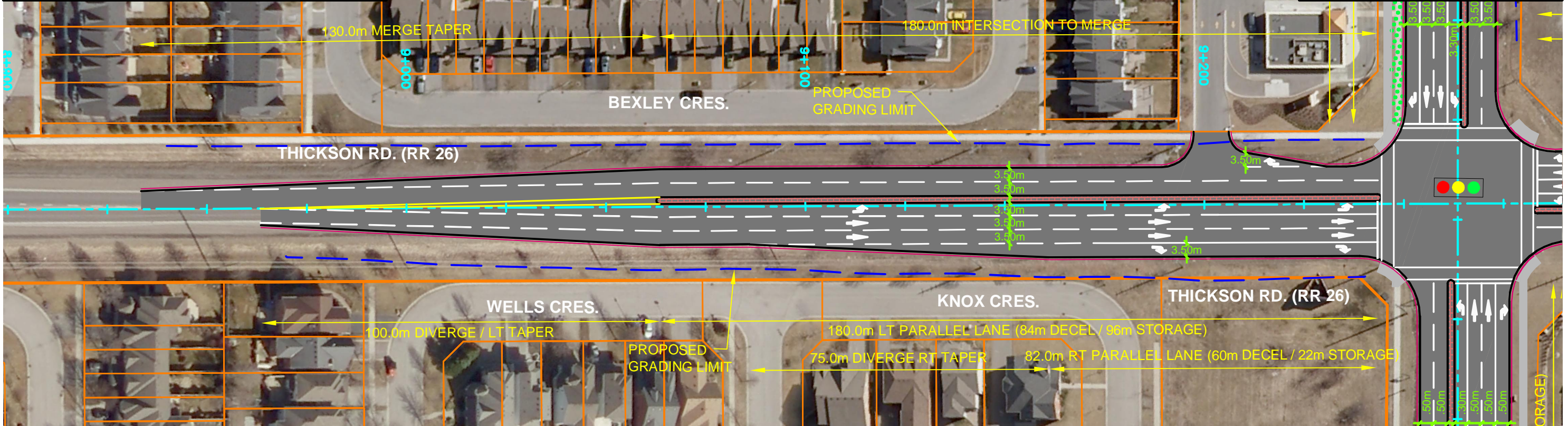
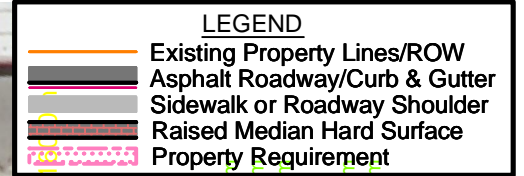
PREFERRED DESIGN
 FROM GARRARD ROAD
 TO 350m E. OF GARRARD ROAD

PLAN
 08

DRAWING NAME: Winchester Plate REC-09w-pro.dwg
 SAVED BY: mcgregorr
 PLOT DATE: May 27, 2013
 SAVE DATE: October 9, 2012

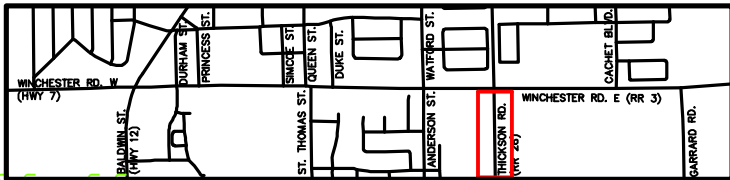


2010 ORTHOPHOTOGRAPHY PROVIDED BY © FIRST BASE SOLUTIONS INC.
 © 2008 MPAC AND ITS SUPPLIERS. ALL RIGHTS RESERVED. NOT A PLAN OF SURVEY.
 © TERANET ENTERPRISES INC. AND ITS SUPPLIERS. ALL RIGHTS RESERVED. NOT A PLAN OF SURVEY.



		HORIZONTAL SCALE 1:1000 		WINCHESTER ROAD IMPROVEMENTS CLASS ENVIRONMENTAL ASSESSMENT AECOM PROJECT NO: 60118993	PREFERRED DESIGN THICKSON ROAD FROM 350m NORTH OF WINCHESTER ROAD TO WINCHESTER ROAD	PLAN 09
		VERTICAL SCALE 1:200 				

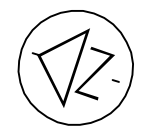
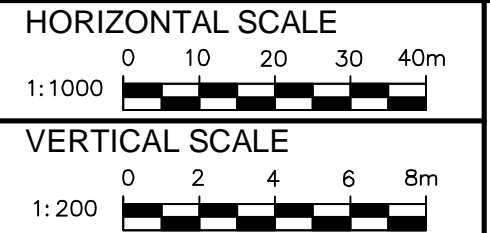
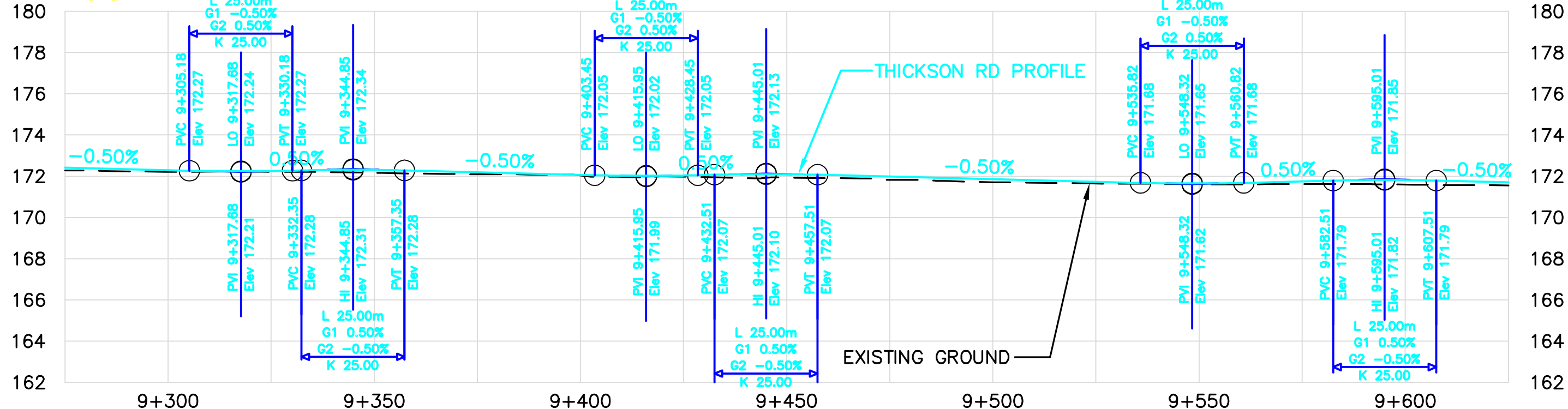
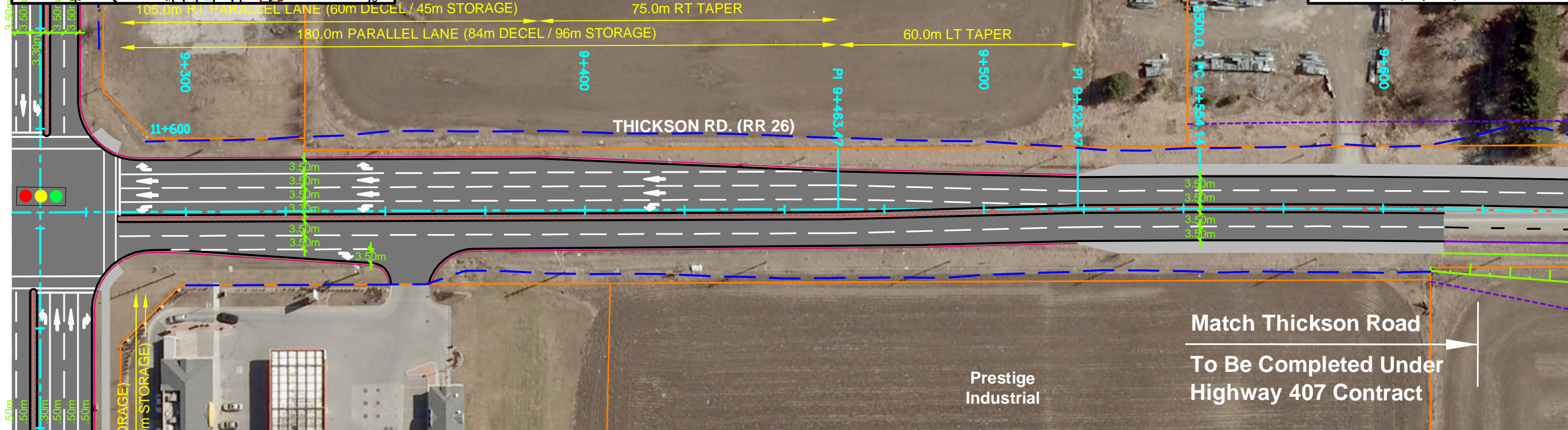
DRAWING NAME: Winchester PLATE REC-10w-pro.dwg
 SAVED BY: mcgregorr
 SAVE DATE: October 9, 2012
 PLOT DATE: May 27, 2013



2010 ORTHOPHOTOGRAPHY PROVIDED BY © FIRST BASE SOLUTIONS INC.
 © 2008 MPAC AND ITS SUPPLIERS. ALL RIGHTS RESERVED. NOT A PLAN OF SURVEY.
 © TERANET ENTERPRISES INC. AND ITS SUPPLIERS. ALL RIGHTS RESERVED. NOT A PLAN OF SURVEY.



Prestige Industrial

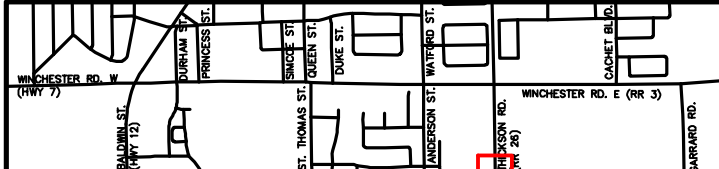


WINCHESTER ROAD IMPROVEMENTS
 CLASS ENVIRONMENTAL ASSESSMENT
 AECOM PROJECT NO: 60118993

PREFERRED DESIGN
 THICKSON ROAD FROM
 WINCHESTER ROAD TO 350m
 SOUTH OF WINCHESTER ROAD

PLAN
 10

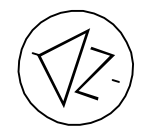
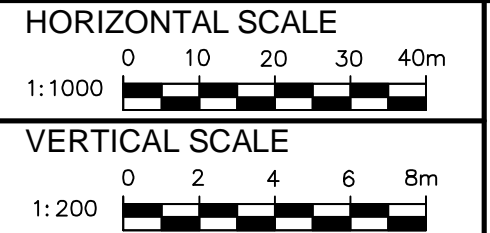
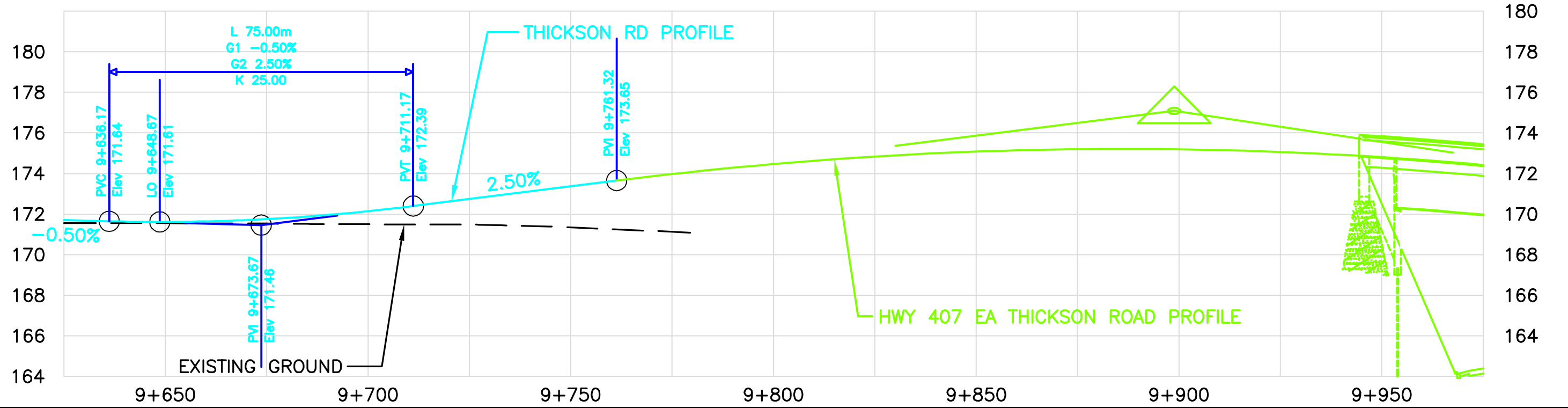
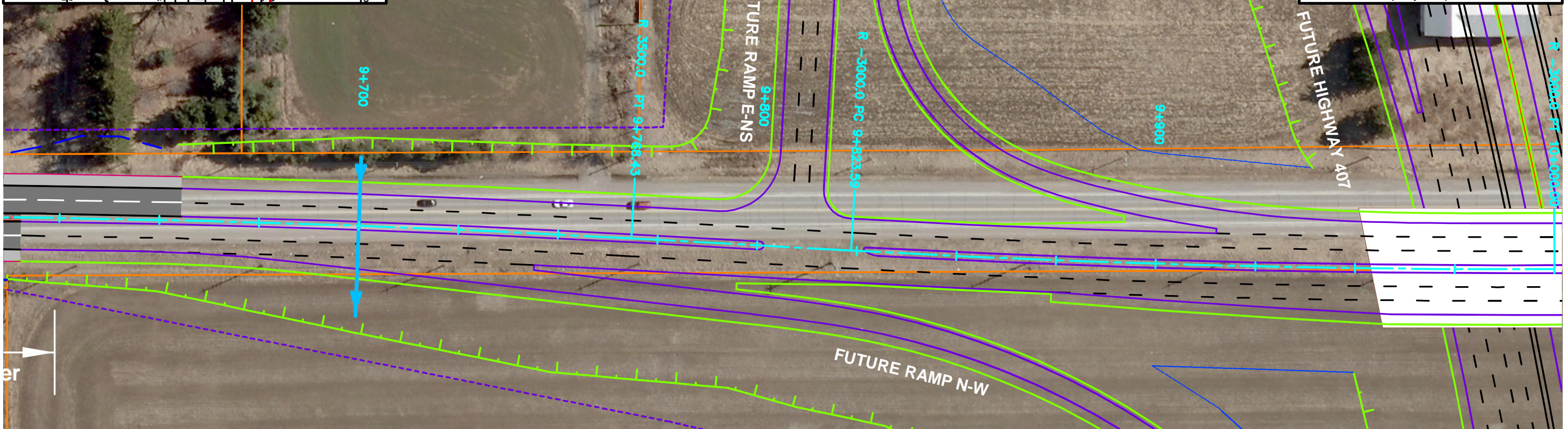
DRAWING NAME: Winchester Plate REC-11w-pro.dwg
 SAVED BY: mcgregor
 SAVE DATE: October 9, 2012
 PLOT DATE: May 27, 2013



2010 ORTHOPHOTOGRAPHY PROVIDED BY © FIRST BASE SOLUTIONS INC.
 © 2008 MPAC AND ITS SUPPLIERS. ALL RIGHTS RESERVED. NOT A PLAN OF SURVEY
 © TERANET ENTERPRISES INC. AND ITS SUPPLIERS. ALL RIGHTS RESERVED. NOT A PLAN OF SURVEY

LEGEND

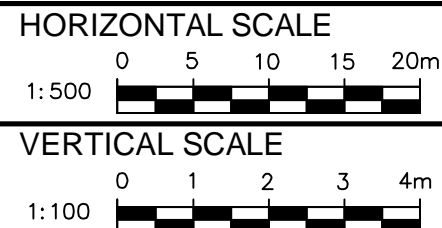
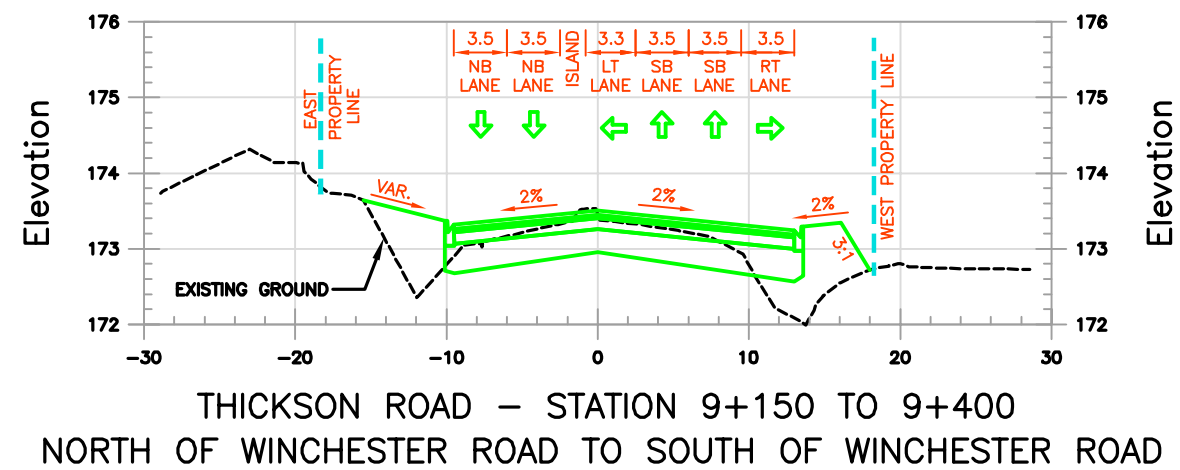
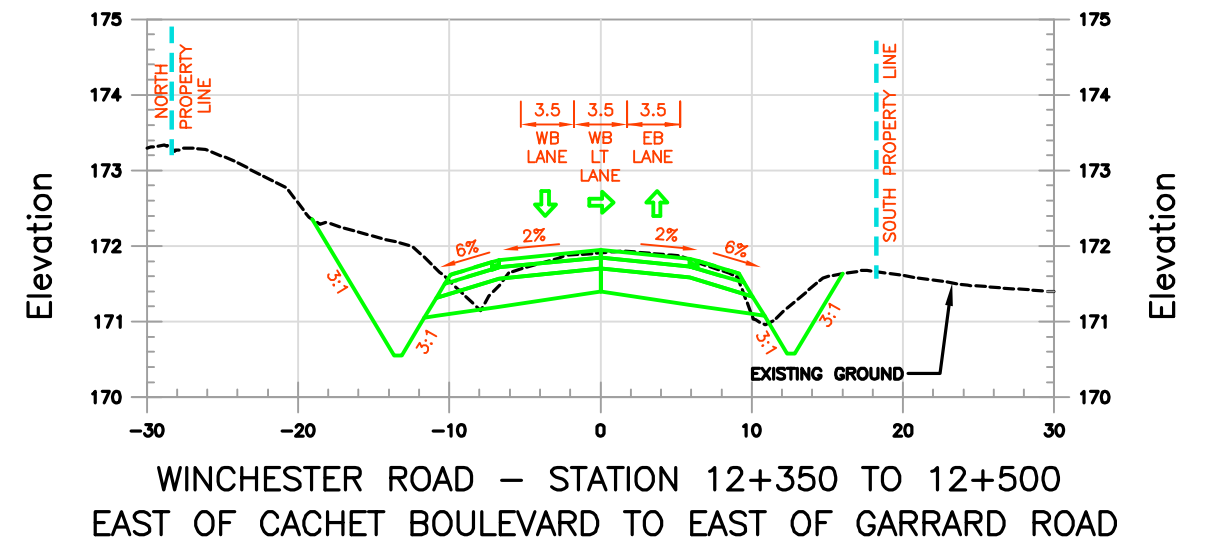
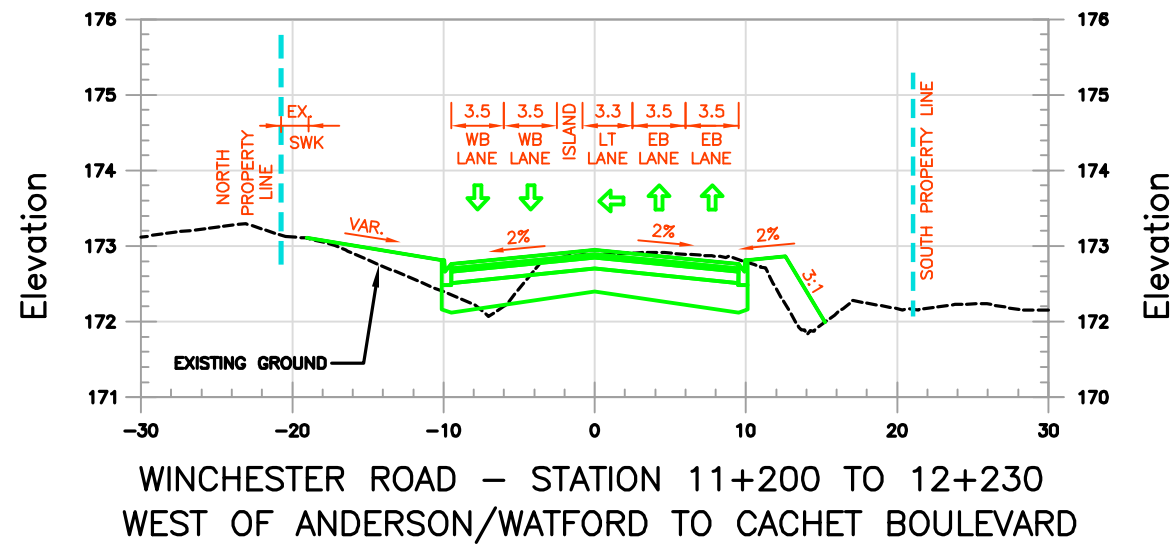
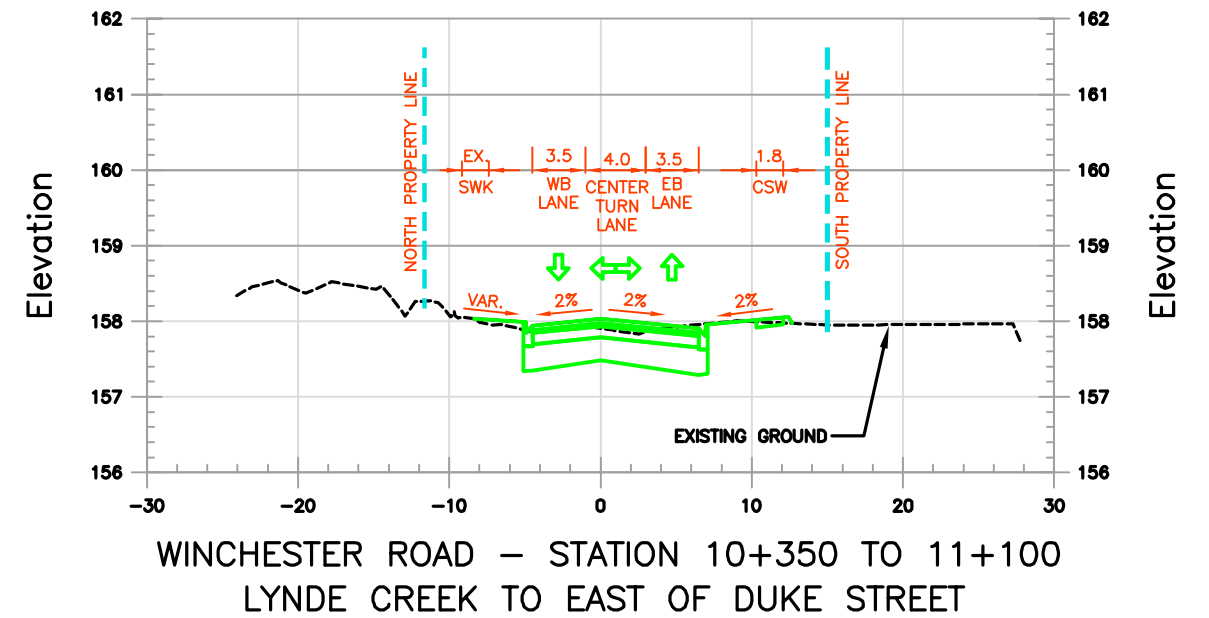
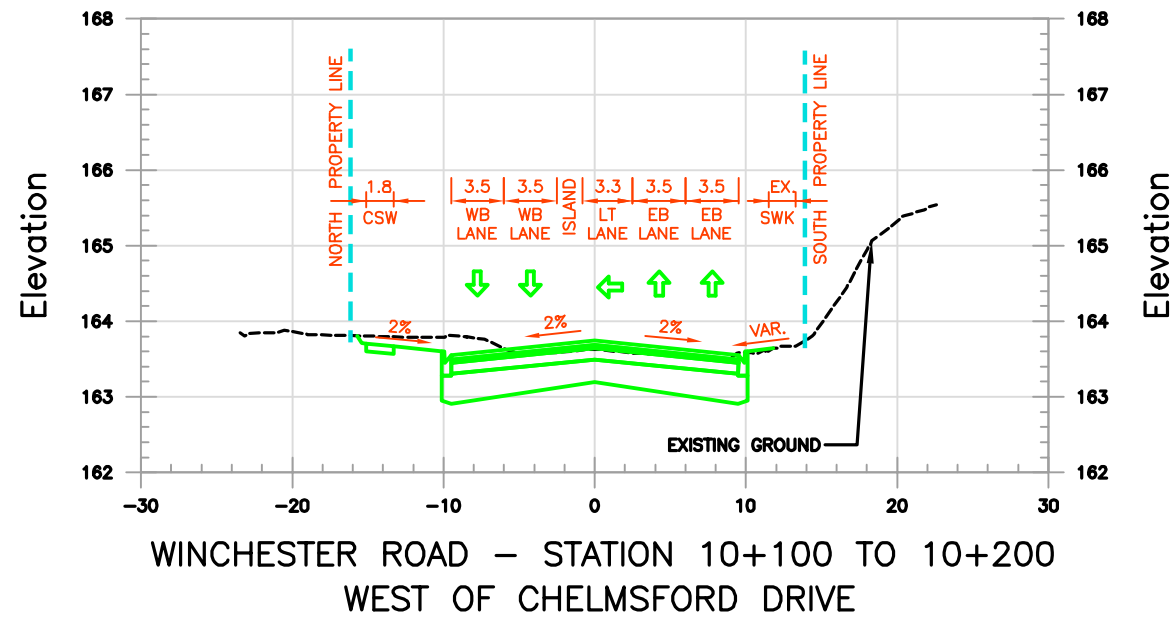
- Existing Property Lines/ROW
- Asphalt Roadway/Curb & Gutter
- Sidewalk or Roadway Shoulder
- Raised Median Hard Surface
- Property Requirement



WINCHESTER ROAD IMPROVEMENTS
 CLASS ENVIRONMENTAL ASSESSMENT
 AECOM PROJECT NO: 60118993

PREFERRED DESIGN
 THICKSON ROAD FROM 350m
 SOUTH OF WINCHESTER ROAD
 TO HIGHWAY 407

PLAN
 11

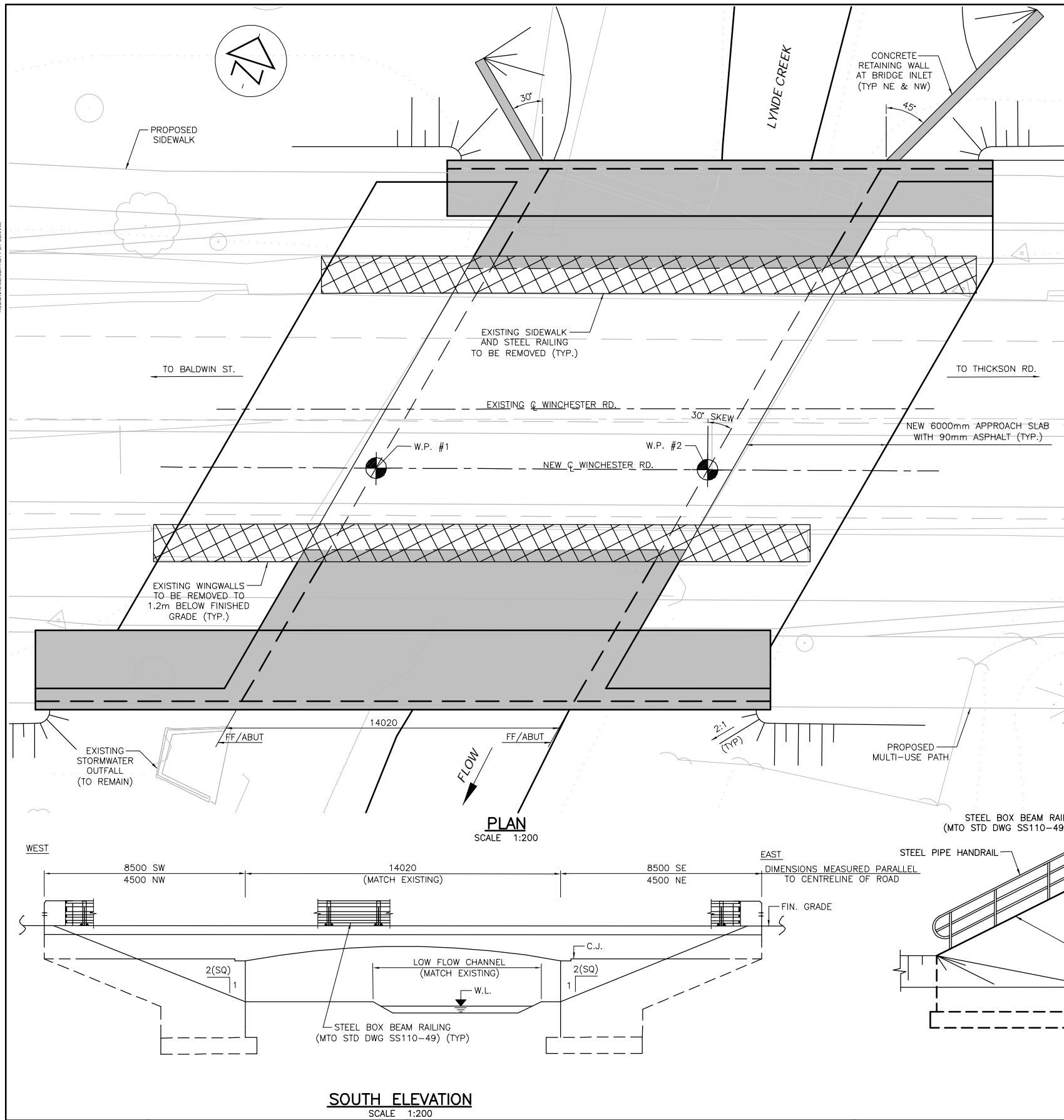


WINCHESTER ROAD IMPROVEMENTS
 CLASS ENVIRONMENTAL ASSESSMENT
 AECOM PROJECT NO: 60118993

PREFERRED DESIGN
 TYPICAL SECTIONS

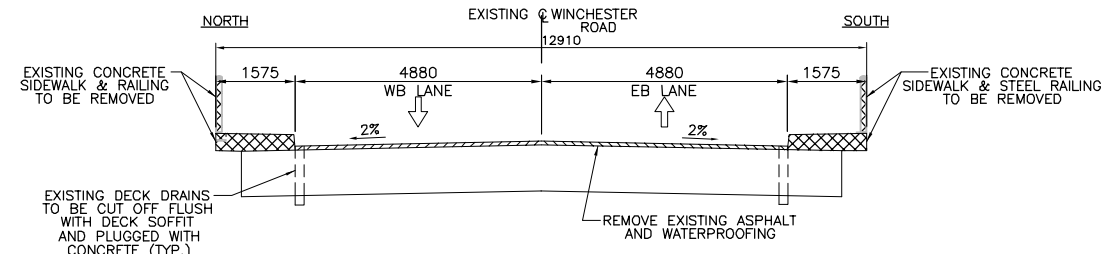
PLAN

DRAWING NAME: Winchester Plate REC-13 Lynde Creek GA.dwg
 SAVED BY: mcgregorr
 PLOT DATE: May 27, 2013
 SAVE DATE: May 15, 2013



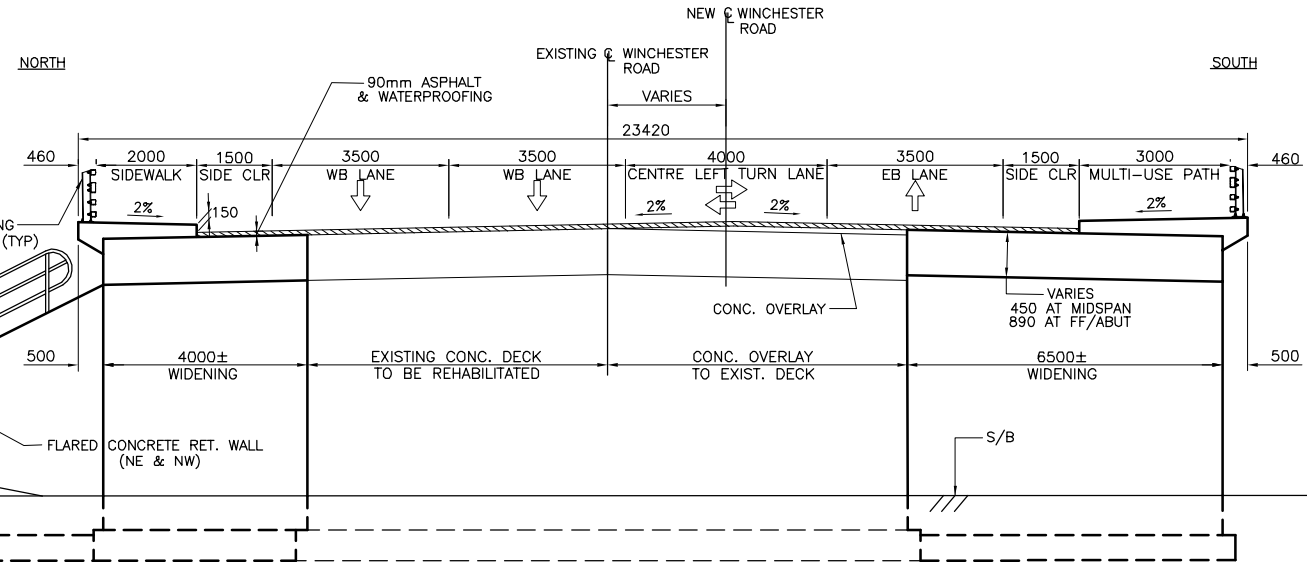
PLAN
SCALE 1:200

SOUTH ELEVATION
SCALE 1:200



EXISTING DECK CROSS-SECTION
SCALE 1:150

- LEGEND**
- DENOTES REMOVALS FROM EXISTING BRIDGE
 - DENOTES BRIDGE WIDENING



NOTE
DIMENSIONS MEASURED PERPENDICULAR TO C/R UNLESS NOTED OTHERWISE

NEW DECK CROSS-SECTION
SCALE 1:150



WINCHESTER ROAD IMPROVEMENTS
 CLASS ENVIRONMENTAL ASSESSMENT
 AECOM PROJECT NO: 60118993

PREFERRED DESIGN
 LYNDE CREEK BRIDGE WIDENING
 PRELIMINARY GENERAL
 ARRANGEMENT DRAWING

PLAN
 13