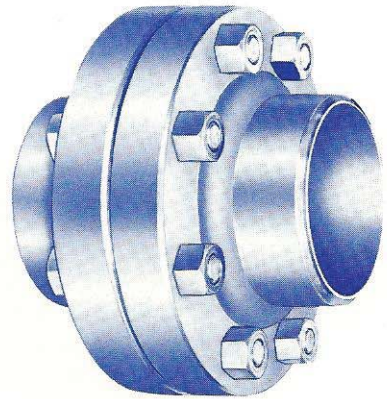
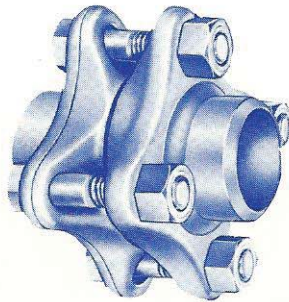
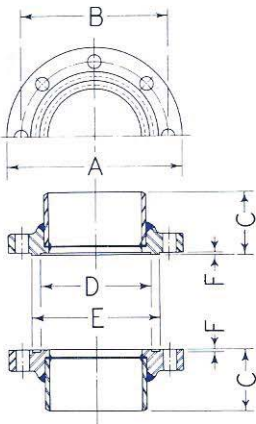
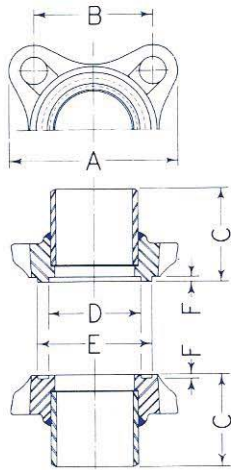


WOLF-LINDE AMMONIA FLANGES

THE AMMONIA FLANGES PICTURED BELOW ARE WELD NECK.
 THE PIPE IS BUTTED AGAINST THE NECK AND WELDED

THE SQUARE AMMONIA FLANGE (4-BOLT) RANGES IN SIZE FROM
 1-1/4" THRU 4". THE ROUND AMMONIA FLANGE RANGES FROM
 5" THRU 12".



STYLE OF FLANGE	SIZE OF PIPE INCHES	CODE NO. OF FLANGE	A OUTSIDE SIZE OF FLANGE, INCHES	B CENTER OF FLANGE BOLTS, INCHES	C THICKNESS OF FLANGE, INCHES	NOMINAL TONGUE & GROOVE DIMENSIONS			BOLTS		WT. OF SINGLE FLANGE ONLY, LBS.	WT. OF FLANGE UNION, LBS.
						D I.D., INCHES	E O.D., INCHES	F DEPTH, INCHES	NO.	SIZE, INCHES		
SQUARE	1 1/4	2793WN	3 1/2	2 3/8	2 1/8	1 3/4	2 3/8	1/8	4	1/2	2	5
	1 1/2	4262WN	4	2 3/4	2 1/4	2	2 3/4	1/8	4	1/2	2 3/4	6 1/2
	2	489WN	4 1/2	3 1/16	2 1/4	2 1/2	3 1/4	1/8	4	5/8	3 1/4	8 1/2
	2 1/2	779WN	5 1/2	3 7/8	3	3	3 3/4	1/8	4	3/4	5 3/4	14
	3	30WN	6	4 1/8	3 1/8	3 5/8	4 3/8	1/8	4	3/4	7 1/4	17 1/2
	4	40WN	7	5	3 3/4	4 3/4	5 1/2	1/8	4	7/8	11 1/2	27
ROUND	5	433WN	10 1/4	8 1/2	4	6 1/8	7 1/4	1/8	8	3/4	25	57
	6	1038WN	11 1/4	9 1/2	4	7 1/8	8 1/4	1/8	8	3/4	29	65
	8	1439WN	14 1/4	12	4 1/2	9 3/8	10 1/2	3/16	8	7/8	50	110
	10	1929WN	16 1/2	14 3/8	5	11 3/8	12 5/8	3/16	12	7/8	70	155
	12	1591WN	20 1/2	17 3/4	5 1/8	13 1/2	15	3/16	16	1 1/8	140	320