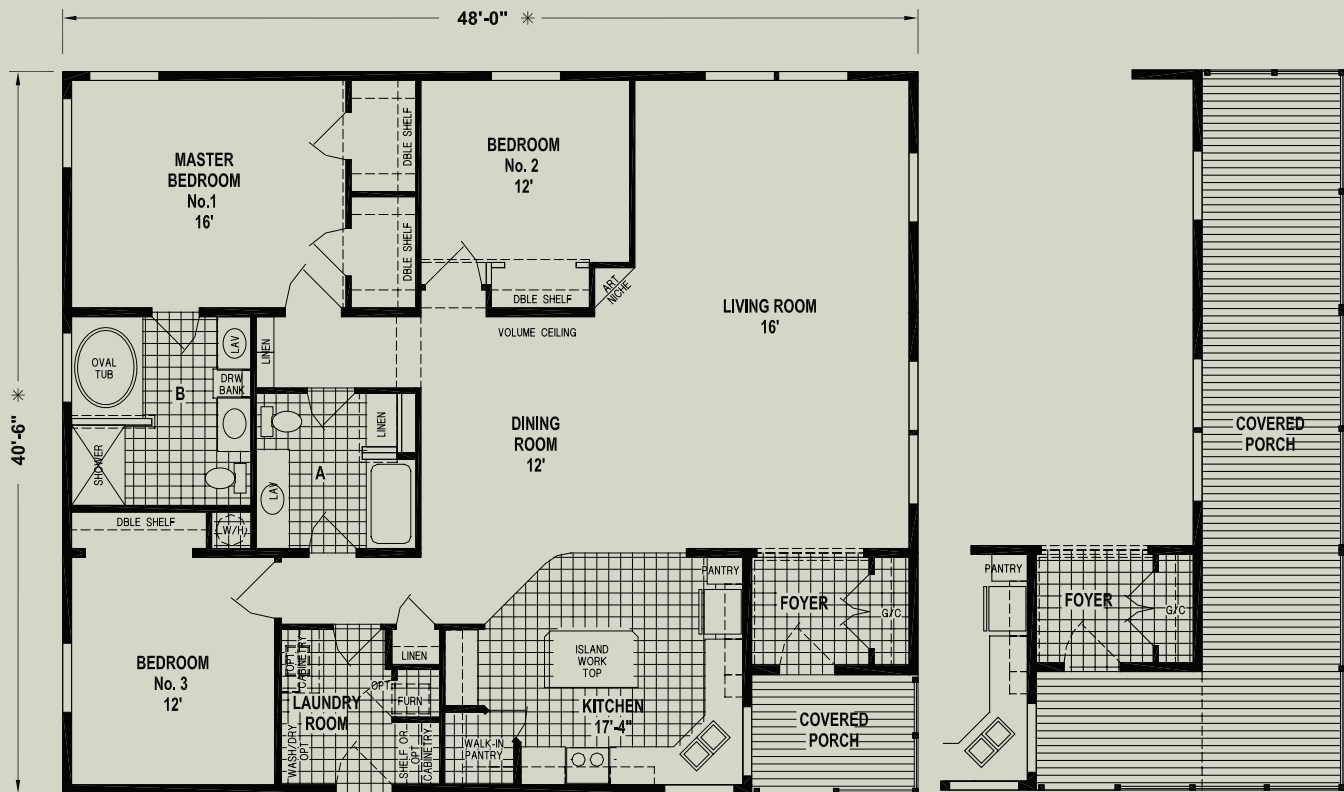


WEST RIDGE

SKYLINE HOMES OF McMinnville, OREGON

1473CT/4842



1,881 SQ. FT. • 3 BEDROOM • 2 BATHS

OPTION PORCH



SKYLINE®

BRINGING AMERICA HOME. BRINGING AMERICA FUN.

WWW.SKYLINEHOMES.COM

FULL WARRANTY
15 MONTH
 NOT PARTIAL
 NOT LIMITED

WEST RIDGE

SKYLINE HOMES OF McMinnville, Oregon

STANDARD FEATURES

1473CT/4842

LIVING AREAS

- Your Choice of (6) Interior Paint Colors
- 52" Ceiling Fan with Light in Living Room
- Wood Cornice Valances on All Windows Except Bathroom
- Metal Mini Blinds
- Shaw Carpet with Rebond Pad
- Decorative Chandelier in Dining Room

KITCHEN

- Natural Hardwood Cabinets (Oak, Espresso or White Flat Panel)
- Lined Overhead Cabinets with Adjustable Shelves
- Fully Extended Drawer System with Ball Bearing Guides
- Residential Hidden Cabinet Door Hinges
- 18 Cu. Ft. Double Door Frost Free Refrigerator
- 30" Deluxe Electric Range with Glass Door, Clock and Timer
- Stainless Steel Sink with Single Lever Faucet and Sprayer
- 6" Ceramic Tile Backsplash
- Plumb for Ice Maker

BATHROOMS

- Your Choice of (3) Natural Hardwood Cabinets (Oak, Espresso or White Flat Panel)
- Natural Hardwood Trimmed Mirrors with (2) Bulb Tulip Light
- Drop-In Oval Tub with 54" Stall Shower in Master Bath
- 60" Fiberglass Tub/Shower Combo in Hall Bath
- Single Lever Faucet at Sink
- Single Lever Tub/Shower Faucet
- Residential Hidden Cabinet Door Hinges
- Power Vent Fan with Light
- Elongated China Commodes
- China Lav Sinks
- Residential Height Bathroom Counter Tops

BEDROOMS

- Shaw Carpet with Rebond Pad
- Overhead Lights with Separate Switch
- Double Ventilated Wire Shelving in Closets (where applicable)
- 36" Interior Doors with Lever Handles
- Metal Mini Blinds

ADDITIONAL FEATURES

- Board and Batt Exterior on Front Door Side
- 10' Dormer over Living Room Windows
- 30-Year Shingles (Fiberglass - Class A Fire Rated) Choice of Colors
- Vaulted Ceilings Throughout
- Residential Finished Drywall Throughout
- Baseboards Throughout
- 2-Panel Beaded Interior Doors with Lever Handles
- Mortised Hinges Throughout
- Linoleum Floor at Entry
- Electric Forced Air Furnace
- Insulated Fiberglass Heat Ducts
- Perimeter Heating System Throughout with Toe-Kick Registers in Kitchen and Bathrooms
- 40 Gal. Electric Water Heater (Dual Element)
- Whole House Water Shut-off Valve
- Residential PEX Waterlines
- Plumb for Washer; Wire for Dryer
- Wire Shelf over Washer/Dryer Area
- Wire for Freezer (per floor plan)
- 36" 6-Panel In-Swing Fiberglass Front and 9-Lite Rear Door with Deadbolts
- Energy Star Rated Low "E" Vinyl Windows
- Tongue and Groove OSB Decking
- 200 Amp Service Entrance
- 2 x 6 Sidewalls, 16" O.C.
- 2 x 6 Floor Joists, 16" O.C.
- 30# Roof Load
- Exterior Receptacle with GFI Breaker
- Code Insulation (R-14 Floor, R-19 Walls and R-25 Ceiling) *The Higher the "R-Value" the Greater the Insulating Power!*

SKYLINE®

For your comfort and safety, Skyline home designs are approved and inspected for conformance to federal standards.

**Dimensions stated to industry standards. Width and length dimensions are nominal and are not to be used for setup of home on site; consult selling retailers for exact specifications. Overall length does not include approximately four foot hitch. The square footage is approximate and based upon nominal exterior floor size.*

Room sizes are measured from floor ends and wall centers.

Because of progressive product improvement, all prices and specifications are subject to change without prior notice or obligation to Skyline Corporation. Your retailer, an independent contractor, who is not an agent of Skyline Corporation, is the party responsible for your purchase contract and any additions, deletions, alterations, or attachments made to or in your home.