

**Rabbit Anti-SHP2/PTPN11 (Tyr584] Polyclonal: RC0022**

**Intended Use:** For Research Use Only

**Description:** Acts downstream of various receptor and cytoplasmic protein tyrosine kinases to participate in the signal transduction from the cell surface to the nucleus. Dephosphorylates ROCK2 at Tyr-722 resulting in stimulation of its RhoA binding activity.

**Specifications:**

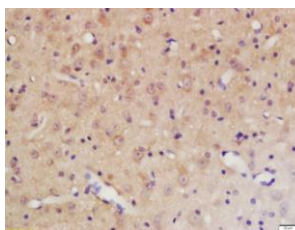
Clone: Polyclonal  
Source: Rabbit  
Isotype: IgG  
Reactivity: Human, mouse, rat  
Immunogen: KLH conjugated synthetic phosphopeptide 550-597/597 derived from human PTPN11 around the phosphorylation site of Tyr584  
Localization: Cytoplasm  
Formulation: Antibody in PBS pH7.4, containing BSA and  $\leq 0.09\%$  sodium azide (NaN<sub>3</sub>)  
Storage: Store at 2°- 8°C  
Applications: IHC, IF, WB  
Package:

Description	Catalog No.	Size
SHP2/PTPN11 (Tyr584] Polyclonal Concentrated	RC0022	1 ml

**IHC Procedure\*:**

Positive Control Tissue: Breast carcinoma  
Concentrated Dilution: 10-50  
Pretreatment: Citrate pH6.0 or EDTA pH8.0, 15 minutes using Pressure Cooker, or 30-60 minutes using water bath at 95°-99°C  
Incubation Time and Temp: Overnight @ 4°C  
Detection: Refer to the detection system manual

\* Result should be confirmed by an established diagnostic procedure.



FFPE rat brain stained with anti- SHP2/PTPN11 (Tyr584] using DAB

**References:**

1. The tyrosine phosphatase SHP2 controls TGF $\beta$ -induced STAT3 signaling to regulate fibroblast activation and fibrosis.
2. Zehender A, et al. Nat Commun. Aug 14;9(1):3259, 2018.
3. Dephosphorylated parafibromin is a transcriptional coactivator of the Wnt/Hedgehog/Notch pathways. Kikuchi I, et al. Nat Commun. Sep 21;7:12887, 2016.
4. Oxidation sensitivity of the catalytic cysteine of the protein-tyrosine phosphatases SHP-1 and SHP-2. Weibrecht I, et al. Free Radic Biol Med. Jul 1;43(1):100-10, 2007.