



REN

Riser Restorative Deep Cleaning

We understand most escalators are dirty and not ready for easy maintenance cleaning. They need restorative, deep cleaning before you can begin a regular maintenance program using REN pads.

Using RESTORE for Escalator Risers & Treads combined with the REN Riser Brush and REN Riser Pads gives you a low-cost solution to deep clean and restore your escalator risers.

Items required:

- REN RESTORE liquid solution CS-20-00
- REN Riser Brush RB-10-00
- REN Telescoping Handle TH-10-00
- REN Riser Pads (order V or W pattern, identify manufacturer)
- REN Riser Head Unit HS-16-00
- Trigger spray bottle (works best)

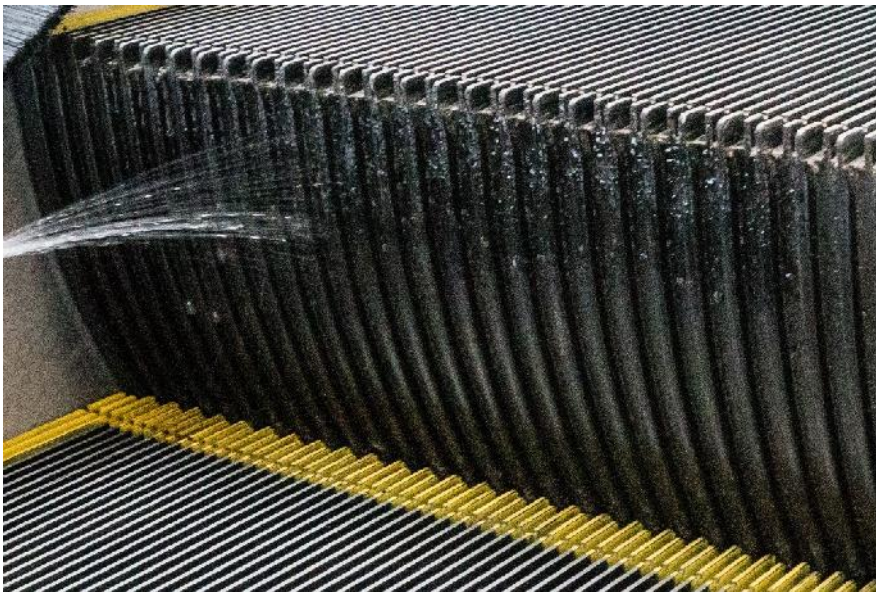
3 Easy Steps

1. Spray risers with RESTORE
2. REN Riser Brush agitation, scrubbing.
3. REN Riser Pads wipe clean the riser.

***DEEP CLEAN TREADS BEFORE RISERS**

Contact REN with any questions.

sales@renclean.com



REN

Riser Restorative Deep Cleaning

Step 1

RESTORE cleaning solution

Specially formulated to allow safe, effective deep cleaning of all escalators.

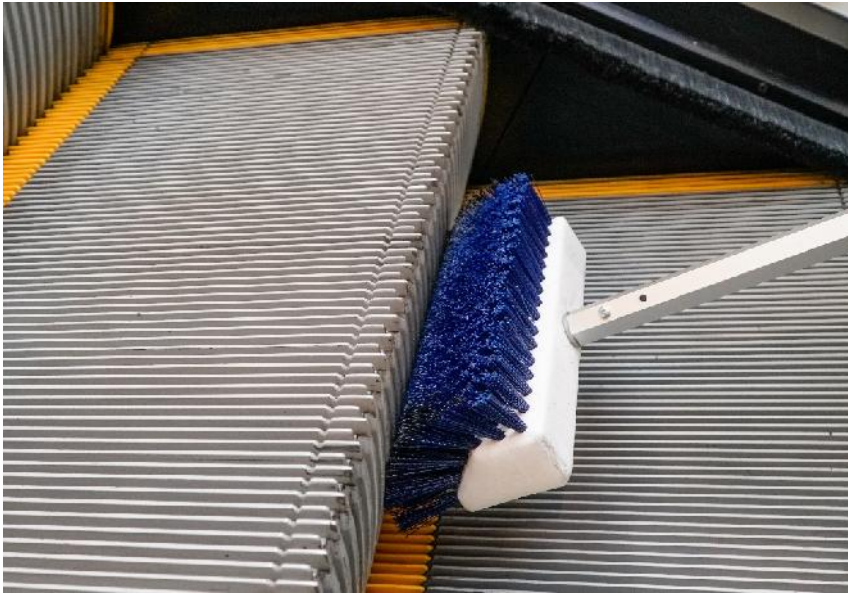
The NO DRIP formula stays where you spray, clings to vertical surfaces. When sprayed through a nozzle, RESTORE activates into a micro gel and sticks to the surface.

Will not drip into the escalator mechanicals or chain drive system.

1. **STOP THE ESCALATOR.**
2. Do not dilute RESTORE cleaning liquid.
3. Pour RESTORE into a trigger spray bottle.
4. Adjust to a wide spray pattern.
5. Spray the risers, fully coating entire surface.
6. Allow RESTORE to rest on the riser for a few minutes before brushing or wiping with pads.

Contact REN with any questions.

sales@renclean.com



REN

Riser Restorative Deep Cleaning

Step 2

REN Riser Brush

The REN Riser Brush has three profiles designed to adjust to the curved riser surface and reach into the corner where the riser meets the tread.

REN Riser Brush scrubbing with RESTORE will loosen the deep dirt and grease.

1. Attach the REN telescoping handle to the REN Riser Brush.
2. Manually scrub the risers in a up and down motion.
3. When the REN Riser Brush becomes loaded with dirt, spray rinse with water.



Contact REN with any questions.

sales@renclean.com



REN

Riser Restorative Deep Cleaning

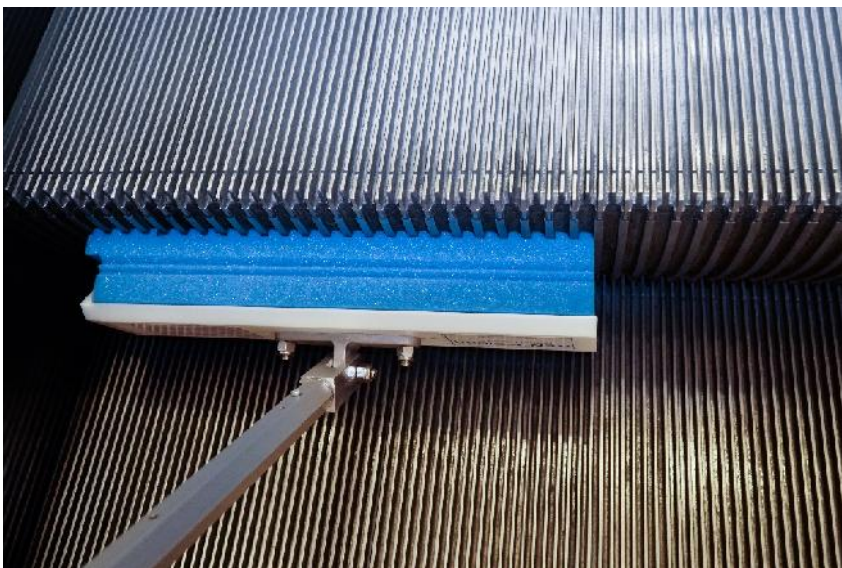
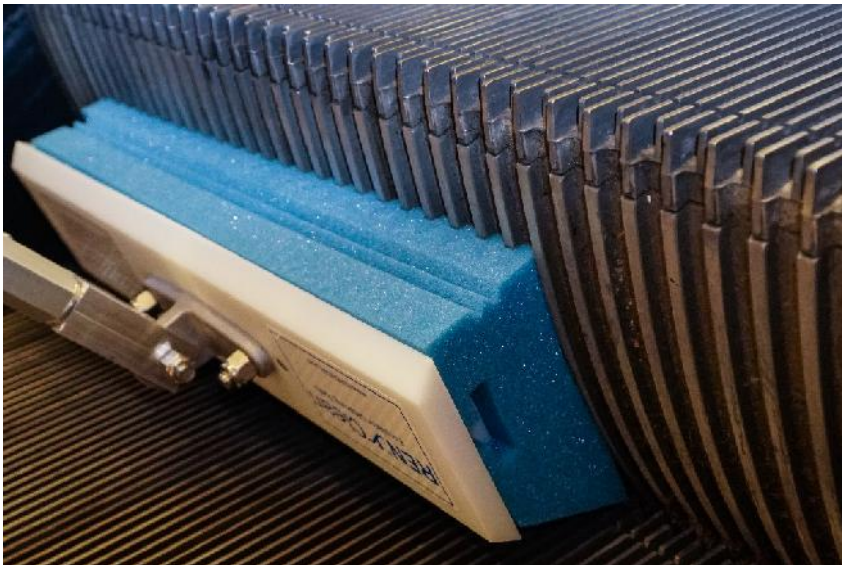
Step 3

REN Riser Pad

REN Riser pads have engineered ridges sized and spaced to fit perfectly into the riser grooves. Scrub and Wipe to absorb and lift away the dirt and grime, leaving a perfectly restored, clean riser surface.

Riser Pads can be washed and reused.

1. Place the Riser Pad on the Head unit in the correct direction, notched surface first.
2. Manually wipe and clean the risers using an up and down motion.
3. Make sure to wipe all edges and corners.
4. Repeat the riser cleaning process for the remaining risers.
5. Wash Riser Pads for reuse



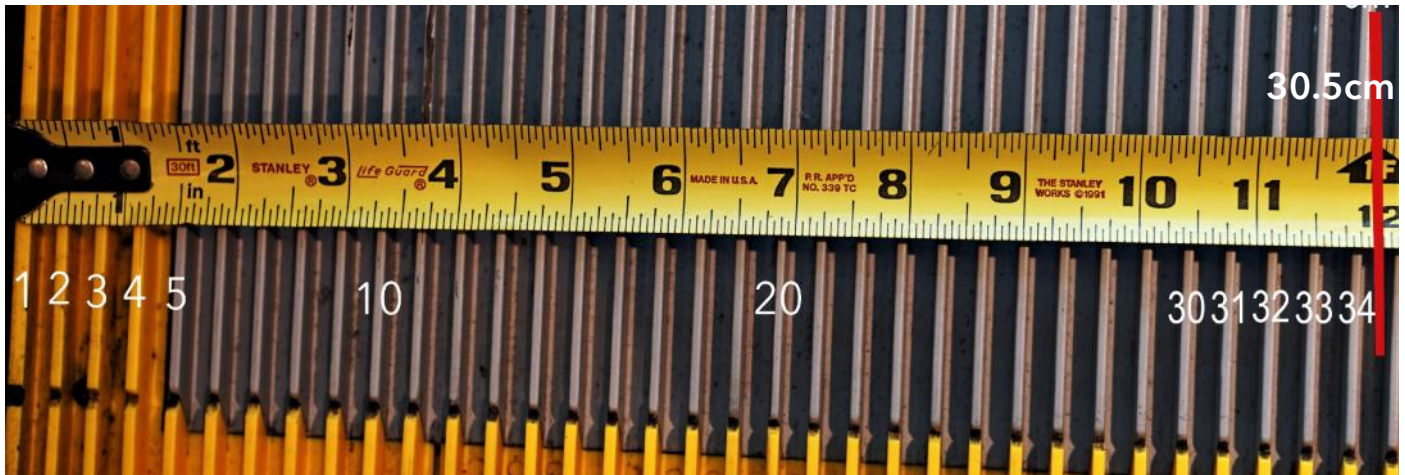
Contact REN with any questions.

sales@renclean.com

1

Select your REN Riser Pad style, V or W.

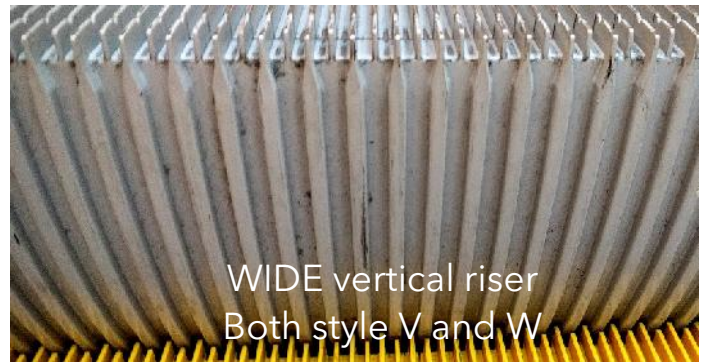
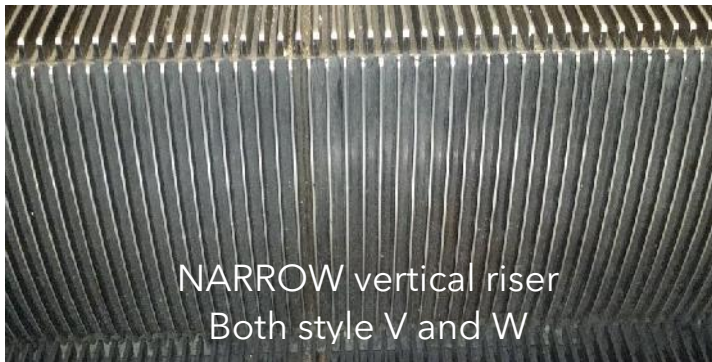
Identify the escalator manufacturer - or - count the ribs.



Stop the escalator and measure 12 inches (30.5cm) of tread.
Count the ribs within the 12 inches of tread.

If you counted 34 ribs = use a V pad.

If you counted 36 ridges = use a W pad.



2

Identify your vertical riser type, Narrow, Wide, or Extra Wide
(email us a photo if uncertain)





<u>PART No.</u>	<u>ITEM</u>
CS-20-00	RESTORE micro gel - no drip cleaner



<u>PART No.</u>	<u>ITEM</u>
RB-10-00	REN Riser Scrub Brush



<u>PART No.</u>	<u>ITEM</u>
HS-16-00	Pad Holder w/ Telescoping Handle



NARROW pad



WIDE pad

<u>PART No.</u>	<u>ITEM</u>
RP-16-W1	W - Narrow Pad
RP-16-W2	W - Wide Pad
RP-16-W3	W - Extra Wide Pad
RP-16-V1	V - Narrow Pad
RP-16-V2	W - Wide Pad