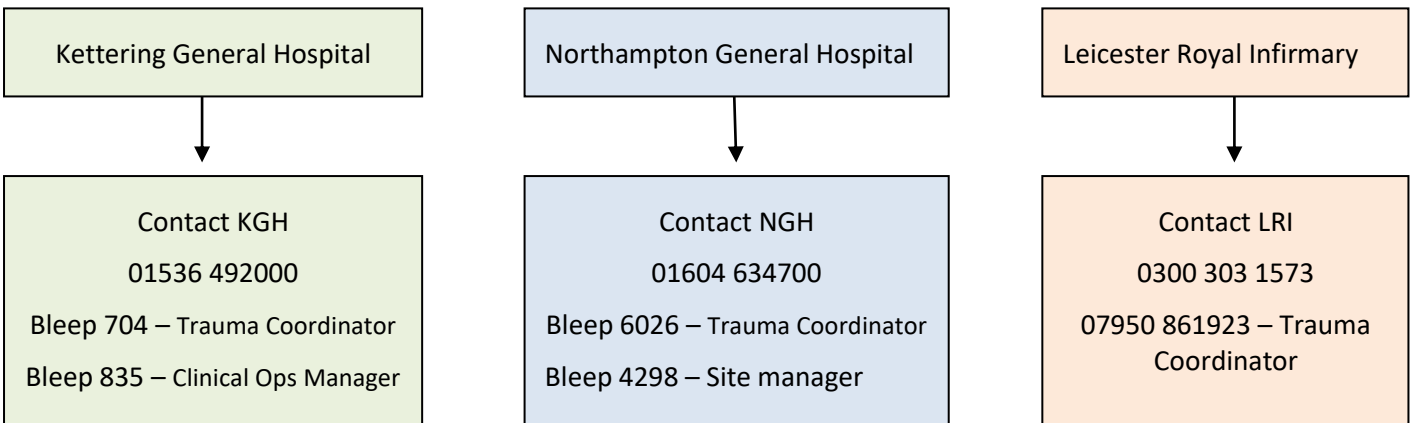


**UHCW Major Trauma Service**  
**Repatriation to Trauma Units – Care Closer to Home**

This process should be followed for patients from Northamptonshire and Leicestershire who were admitted to the Major Trauma Centre (MTC) and now require ongoing care, rehabilitation and/or discharge planning closer to home.

This process is to allow flow between the MTC and the Trauma Units (TU) so patients can be treated in the most appropriate facility.

Lead team at MTC to contact appropriate specialty team at TU, and date, time and name of accepting consultant at TU to be documented in the patient’s medical notes.  
 MTC then inform trauma coordinator/bed management at TU that patient has been accepted and requires a bed



Inform UHCW bed capacity manager that the patient has been accepted at TU  
 Prepare for transfer. Please refer to: ‘Closer to Home - transfer checklist’

Patients’ should be repatriated back to their TU within 48 hours of referral  
**Escalate delays >48 hours to the UHCW control room extension 24948**

