

# PANGBOURNE MAGAZINE

ISSUE 166

JANUARY/FEBRUARY 2022



# Warmingham

www.warmingham.com

# HAPPY NEW YEAR

Having celebrated successive record breaking years in **2016**, **2017**, **2018**, **2019**, and **2020**, we've done it again in **2021**!

Please join us to realise your property aspirations!

**Warmingham & Co – Your leading independent property consultancy....**

Having been established for over 35 years, we don't rest on our laurels; Leading by the front, achieving the very best for our clients. For a 6th consecutive year, 2021 has seen Warmingham & Co, out-sell and out-let all of our competitors within our area of coverage\*, as recorded by Rightmove. Accordingly, you can be assured of a professional and thorough approach from our highly qualified and experienced, personable staff, who both understand the current marketplace, and yield extensive local knowledge. Offering our clients the most effective, cohesive and progressive marketing package tailor-made to their own individual requirements, locally, nationally, and internationally, 7 days a week, we are here to make your next move both seamless, and the right one for you.

OX11 0, OX11 9, RG18 9, RG18 0, OX14 4, OX49 5, RG9 4, RG9 5, OX10 6, OX10 0, OX10 7, OX10 8, OX10 9, RG8 9, RG8 7, RG8 8, RG8 0, RG20 6, RG20 7, OX49 5, RG7 5, RG7 6, RG4 9.

Pop in or call for



your 2022 Calendar!

Sales & Valuations

T 01491 874144

E sales@warmingham.com

Call us **7 Days A Week** to arrange a Free Valuation or Viewing

Office Opening Hours: **Monday - Saturday: 08:30 - 18:30 & Sunday: 10:00 - 16:00**

Website Opening Hours: **24 Hours A Day - 7 Days A Week - 365 Days A Year**

Lettings & Valuations

T 01491 875011

E lettings@warmingham.com



Bob  
Warmingham



Tonia  
Sheldon



Duncan  
Kent



Karen  
Spiers



Laura  
Rosi



Paul  
O'Loughlin



Louise  
Pasker



George  
Brack



Naomi  
O'Loughlin



Arun  
Readings



Sue  
Warmingham

---

## CONTENTS

Local News .....	5
What's On .....	9
Church News .....	11
Crossword .....	15
Local Organisations .....	19
Education .....	34
Pangbourne in WWII .....	39
110 Years of Freemasonry in Pangbourne .....	42
Pangbourne Place-Names .....	46
Environmental News .....	50
Council News .....	57
Classified Ads .....	61
Useful Numbers .....	62

### THE PANGBOURNE MAGAZINE

Production/Advertising/Finance:  
**Herald Graphics – 0118 9311488**

Submission of articles\* and adverts:  
**[pangbourne@heraldgraphics.co.uk](mailto:pangbourne@heraldgraphics.co.uk)**  
*(\*receipt of an article is not a guarantee of inclusion)*

Deadline for inclusion in the  
March/April Magazine:  
**Friday, 4th February 2022**  
*(for distribution at the end of the month)*  
Distribution: Lucy Bromage – 07747 056193

Whilst every effort is made to ensure the accuracy of information printed in the Pangbourne Magazine, the Editor and publishers cannot accept any responsibility for the consequences of any errors that may occur. The opinions expressed in this magazine are those of the contributors and are not necessarily those of the Editor or of the Committee. Articles in the Pangbourne Magazine, or the information contained in them, may not be used or reproduced by other publications without the express permission of the Magazine Committee. Whilst care is taken to establish that our advertisers are bona fide, readers are advised to take precautions before entering into any agreement.

Front cover picture courtesy of:  
Ian Crimp

IF YOU WOULD LIKE TO SUBMIT A PHOTOGRAPH FOR THE PANGBOURNE MAGAZINE  
FRONT COVER, PLEASE SEND TO [PANGBOURNE@HERALDGRAPHICS.CO.UK](mailto:PANGBOURNE@HERALDGRAPHICS.CO.UK) FOR CONSIDERATION.  
YOUR IMAGE WOULD NEED TO BE HIGH RESOLUTION AND CONTENT SHOULD BE OF LOCAL INTEREST.

*Thank you for supporting us in 2021!*

We are so grateful to the people of Pangbourne and beyond for supporting us. As we start the new year, we're excited to open our doors again (to both existing and new customers alike) after a short shutdown period.

Moving into 2022 we'll continue to keep customer safety our number one priority by maintaining our screens and masks, as well as many other measures for now. This will ensure a suitable environment to enjoy dining out, safely.

This year will also bring new and other challenges, namely in the form of my re-scheduled London Marathon run in October 2022! More information to follow in the next issue of this magazine.

**Tel: 0118 984 1333**

*Nino's*  
TRATTORIA



# Woof & Bubbles

*Qualified, Professional dog grooming with style.*

*Nicky Viccars*

**Tel: 07920 131 177**

**Email: Nicky@woofandbubbles.co.uk**

**www.woofandbubbles.co.uk**

## HAPPY NEW YEAR

As always, interesting writing this article a few weeks before publication . . . one could become aware of seeking too much information and not enough Transzzzzformations.

Time . . .

Doing something you enjoy and hours can seem like minutes.

Doing something you don't enjoy and minutes can seem like hours.

Time . . . what is it? (Not Chico time)

Looking back especially with the clients seen over the last few years . . . Time is very Salient, especially when they need help NOW.

With waiting lists seeming to get ever longer for physical and mental evaluations I find I can help within a few days (most effectively with Hypnosis for pain control and relaxation techniques).

I am available for telephone calls **up to 3am** everyday and work both Saturdays and Sundays.

A book could (and will I'm sure in time) be written on the shenanigans of the government during these pandemic times, one initiative especially interested me (as a specialist in addiction) – their 10 year plan on drugs. Admirable I'm sure, but most people know the drug which causes the MOST problems and heartache . . . and it's legal.

In fact it would be amusing if it wasn't so tragic the boxes of a particular brand of alcohol piled high in shops named after the virus (C- -o-a) . . . Richard the wise regular at "Baxter's" cafe will get the crossword clue easily. Lorraine our lockdown buddy is still glowing ref naming the famous "jibber jabber " meal @ "Baxter's".

A solution to deter excessive consumption could be . . . like they did with cigarettes, cover up all the bottles, cans and boxes in blank coverings and on the products put graphic photos of car crashes under the influence, people being violently sick, domestic fights, diseased livers etc etc etc . . .

On a lighter note Mother Christmas (The power behind the throne) and I have gone from Lapland to Laptop and invested in a printer after Georgina from the wonderful Sue Ryder "Duchess of Kent" introduced us to a QR code as a means of receiving donations.

Please follow me on Facebook and Instagram and make TIME to make time to enjoy one day at a Time 2022.

*All the best.*

*Jim Tubbs-Galley  
(Hypnoanalyst,  
Tree Guru,  
Reiki Master, DHP)*



## SANTA VISITS PANGBOURNE

Over three consecutive weekends in December, children of all ages were able to meet and greet Santa at Baxter's Café-Kitchen.

This was a fund-raising event for the Sue Ryder Duchess of Kent Hospice, by Local resident, Jim Tubbs-Galley, and his brilliant helper, Ginny.

At the time of going to press they are well on the way to surpass last year's amount and achieving their target of £1000.

If you weren't fortunate see Santa at Baxter's and would like to donate to this worthy cause, please visit Jim's Fundraising page on Facebook.

Our thanks to Jim and Ginny.



## PANGBOURNE & DISTRICT VOLUNTEER CENTRE

Pangbourne & District Volunteer Centre (Pangbourne Volunteers) is a service which provides transport to enable people who might otherwise have difficulty in attending medical appointments or visits to loved ones in care homes. We are based in Pangbourne but cover the areas of Pangbourne, Whitchurch, Whitchurch Hill, Tidmarsh, Purley and part of Tilehurst (area covered by postcode RG31 6--), Upper and Lower Basildon.

After a long closure due to Covid-19 restrictions, we reopened in July. We are, however, short of drivers and volunteers to deal with our clients' transport requests in the office. We would love to hear from anyone interested in joining our volunteer group. You can choose how much time you want to give. You will not be committed to any specific days. The choice is yours. It's very rewarding as our clients are extremely grateful for the service we give.

If you are interested, please call into the office at the Village Hall in Pangbourne or phone (0118 984 4586). We are open from 9.30am to 11.30am Monday to Friday. You can find out more about us by visiting our website: [www.pangbourne-district-volunteers.org](http://www.pangbourne-district-volunteers.org).

A man and a woman are walking hand-in-hand on a path covered in fallen autumn leaves. The man is wearing a tan jacket over a white turtleneck and blue jeans. The woman is wearing a grey patterned coat, a white turtleneck, and a pink and white plaid scarf. A golden retriever is sitting on the path to the left of the couple. The background is filled with trees with yellow and orange autumn leaves.

**HASLAMs**  
.net

Downsize your  
home, upgrade  
your lifestyle

0118 960 1000 | Haslams.net  
The local property experts

## GOOD NEWS FROM ACTION FOR PANGBOURNE TOILETS (APT) CHARITABLE TRUST



Following the modernisation of the Disabled Toilet a year ago, the Trustees of APT are delighted to announce that work has now commenced on the modernisation of the Ladies Toilets. This work began on November 17th and is expected to be completed before Christmas 2021.

There will be an official opening of the modernised Ladies Toilets in January, and the Trustees hope to see many APT Supporters and other members of the public there.

A lot of planning has gone into the project and considerable funds have been raised so that the 'Ladies' can be given a fresh, modern, appearance. We hope that this will help to make our village a more attractive place to visit, as well reaching out to the elderly and those people with medical needs that require access to such facilities. The project has been funded by grants from the Coop Community Fund Scheme and the Rotary

Club of Pangbourne, donations from individuals, and matched funding from the Greenham Trust.

Nationally there has been a reduction by one fifth of public conveniences in the UK in the past seven years. Cash strapped councils, who are not legally required to provide public toilets chose not to fund them so as to protect other services. In 2015 when West Berkshire Council announced their intention to close the Station Road Toilets, it was made very clear by the amount of disquiet from Pangbourne residents, that they should remain open. APT are extremely pleased that they took on this challenge in 2015 and the toilets have been appreciated by so many people since then.

Today they are used on average 85 times a day, and during the lock down in 2020 we have been told that they were enormously helpful to Key Workers, particularly as so many businesses had closed their facilities.

Completing Phase 2 of the plans to modernise the toilets will leave APT with one final hurdle, the modernisation of the Gents and the Night Toilet. We will begin to fundraise for this in 2022, with the first event being a coffee morning in the Art Café, Whitchurch, on Saturday February 26th. We hope you will join us there!



*A packed village hall at the public meeting in September 2016 where Pangbourne villagers showed their support for keeping the toilet block open.*



*Trustees of APT, Dave Probert, Rosie Nurick, Lyn Higgs & Sir Brian Hoskins say thank you to the Cooperative Community Fund for supporting APT and raising £3,378.39 towards the modernisation of the Ladies.*

## PANGBOURNE VILLAGE CHRISTMAS AND HAPPY NEW YEAR



Due to ongoing Covid concerns the shopkeepers and businesses in Pangbourne made the difficult decision this year not to hold their traditional Christmas evening. We thank the businesses and trades throughout the village for

continuing to provide such a wonderful vibrant commercial centre and for supporting all residents and visitors throughout this unusual year.

The Parish Council were still able to bring some good cheer to the village in these challenging times by providing the normal Christmas tree and street lights along the High Street.

Our thanks go to Devarshi at The George who once more agreed to have the tree in her forecourt and to provide the electricity for the lights; Dan from Kings Trees who agreed to put up the tree, take it down and dispose of it in early January and finally David and Dee from O3 who decorated the tree.

Pangbourne Parish Council would like to wish all residents, business and visitors a very happy new year and peaceful 2022.



RESOLUTIONS - TRY HYPNOSIS » » » WORK - TRY HYPNOSIS » » » REST - TRY

HAPPY AND HEALTHY 2022!

# TranszzzzFormations

*Be free of old habits and  
insecurities with hypnotherapy*



Addiction • OCD  
Stress • Anxiety and Fear  
Depression • Shyness  
Public Speaking  
Self-Esteem and Confidence  
Sleeping Problems  
Stop Smoking • Weight Loss

Jim trained at the highly respected RBCCH (Royal Berkshire College of Clinical Hypnosis) and in 1993 trained at UK London College of Clinical Hypnosis, so you can rest assured of many years experience. Drawing from the fields of Hypnotherapy, Cognitive Behaviour Therapy (CBT) and Neuro Linguistic Programming (NLP). Jim uses the most effective techniques from clinical practice to enable you to develop an enhanced and sustainable sense of well being, control and happiness.

Everyday debilitation fears and phobias cause unnecessary distress for thousands of people. Feel better about yourself. Hypnosis will help you retrain your mind so you'll feel much more confident in future situations.

Evenings, late nights and  
weekend visits available

**07881 878 545**

Based in Reading town centre

**[www.transzzzzformations.co.uk](http://www.transzzzzformations.co.uk)**

The Old Forge, 8 Merchants Place, RG1 1DT

Corporate and business  
group sessions – hypno  
boost your workforce!



HAPPINESS - TRY HYPNOSIS » » »

GOOD HEALTH - TRY HYPNOSIS » » »

WEALTH CREATION - TRY HYPNOSIS » » »

» » »

HYPNOSIS » » »

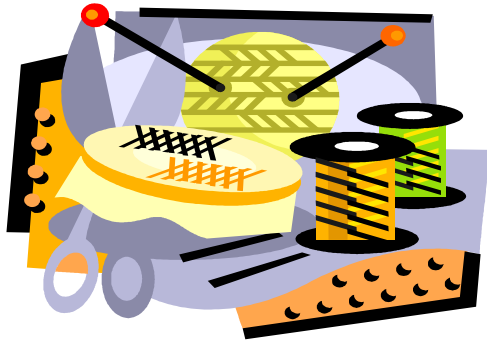
PLAY - TRY HYPNOSIS » » »

PHYSICAL - TRY HYPNOSIS » » »

MENTAL - TRY HYPNOSIS » » »

EMOTIONAL - TRY HYPNOSIS » » » WEIGHT CONTROL - TRY HYPNOSIS » » »

## Craft at Pangbourne Library – new members welcome



**The group is open to all  
Mondays from 2pm-4pm**

**Find a warm welcome and chat over  
coffee whilst you work at your craft**

*Bring along your own project: knitting, crochet, embroidery or other craft work and join this friendly group aiming to encourage craft in the community.*

*This is a free activity open to all ages and abilities. Beginners Welcome.*

*Contact the library for details on 9844117 or email us:  
[pangbournelibrary@westberks.gov.uk](mailto:pangbournelibrary@westberks.gov.uk).*



**Looking for friendship  
in and around Pangbourne**

Come along to one of our new fun events in 2022.

Classic Road Map Rally Challenge  
**Weds 2 February, 7.30pm**

Words and Music Quiz  
**Weds 2 March, 7.30pm**

Elephant Hotel  
Church Road  
Pangbourne  
RG8 7AR.

Members £2  
Guests £3

For further information  
contact Richard: **0118 945 5831**  
**[readingdistrict@oddfellows.co.uk](mailto:readingdistrict@oddfellows.co.uk)**

 **the Oddfellows** SINCE 1810  
making friends. helping people

**f Reading Oddfellows**  
**[www.oddfellows.co.uk](http://www.oddfellows.co.uk)**

The Oddfellows is the trading name of The Independent Order of Odd Fellows Manchester Unity Friendly Society Limited, Incorporated and registered in England and Wales No. 223F. Registered Office Oddfellows House, 184-186 Deansgate, Manchester M3 3WB. Ref 1699

## QUIZ NIGHT

**Saturday 12th February 2022 at 7.00pm**  
**Pangbourne Village Hall**

£15 per person including Fish & Chip Supper

Teams of six

Call 0118 984 3368 or email [sbillyeald@aol.com](mailto:sbillyeald@aol.com)  
by Monday 31st January to book your team's place.

*Let us know of any special dietary requirement.*

Bring your own salt, vinegar and ketchup  
(and knife and fork if you wish!)

There will be a bar for wine, beer and soft drinks

*All proceeds to PCC of Pangbourne with Tidmarsh & Sulham  
to help maintain our three beautiful churches*

## PANGBOURNE VILLAGE MARKET

We would like to thank all our customers who have returned to shop with us. Also another big thank you to the volunteers running the kitchen refreshments. We will be reopening on **Friday the 21st of January**. We hope you have all had an enjoyable festive season and look forward to seeing you in 2022.

2022'S BEST KEPT  
SECRET IS AT

# THE BEAUTY BOX

- Non-Surgical Face Lift
- RF Micro Needling
- Laser Hair Removal
- Microblading
- Fillers
- Sun Spot Removal
- Anti-wrinkle Treatment
- Manicure & Pedicure
- Facials
- Lashes
- Massage
- Waxing



THE BEAUTY BOX PANGBOURNE  
[beautyboxpangbourne.co.uk](http://beautyboxpangbourne.co.uk)

01189842299





## Chiropractic the McTimoney Way

for people and  
small animals

Multi-disciplinary clinic offering integrated  
health care in a friendly, relaxed setting

**Chiropody & Podiatry  
Sports & Remedial Massage  
Acupuncture & Homeopathy**

*Suitable for all ages. Free spine check available.  
Evening and weekend appointments available.*

*For Health Chiropractic*

**0118 984 3473**

Unit 2, The Old Mill  
61 Reading Road  
Pangbourne  
RG8 7HY

[www.forhealthchiropractic.co.uk](http://www.forhealthchiropractic.co.uk)



## KJ Cosmetics — BEAUTY CLINIC —

**Laser Hair Removal  
&  
Skin Rejuvenation**

**Semi-Permanent  
Eyebrows | Eyeliner**

**Lash Extensions  
Lash Lift & Tint**

**Facials  
Dermaplaning  
Skin Peels**

**Massage  
Manicure**



**Free Parking | Free Consultation  
Weekend & Evening Appointments**

[www.kjcosmetics.co.uk](http://www.kjcosmetics.co.uk)  
[kj@kjcosmetics.co.uk](mailto:kj@kjcosmetics.co.uk)  
0118-974-4471

**Hewles Wood Farm  
Badfield, RG7 4DH**

For any further questions and to indicate which classes would suit and what times/days work for you:

Contact: [nash.anja@gmail.com](mailto:nash.anja@gmail.com) 07801 979177



## Dance Fitness & Yoga

**ANJA NASH**

**Qualified Dance Teacher**

Member of the NATD (National Association of Teachers of Dancing)

1<sup>st</sup> Class Honors Degree in Choreography and Dance

Professional Dance Teacher with focus on mental and physical wellbeing

Looking to set up classes locally.

Here are some classes you may be interested in. Please get in touch to indicate your preference(s) and to register for a FREE taster session (feel free to suggest other sessions):

**FREE  
TASTER  
SESSIONS  
WHY NOT  
TRY?**

• **Adult Fitness/Dance/Yoga Classes 50+** No dance experience necessary. Engaging in the fun and sense of community that fitness, dance and yoga offers, enhancing co-ordination, balance, memory and mental/physical wellbeing and fitness.

• **Separate Pre-School, KS1 and KS2 Dance and Fun Activities** Day Sessions for those of you in need of a friendly place for your child to come during the day to enjoy dance, play and to engage with other children, helping your budding dancers grow. No dance experience needed.

• **Fitness/Dance/Yoga for Seniors** No dance experience needed. Sessions for those that desire gentle exercise that will use elements of dance and yoga to engage strength, balance, co-ordination, memory, fitness, wellbeing and building a sense of community. Chair/wheelchair optional.

• **Parties or Group Bookings (Kids/Adults)- Learn Fun Dance Routines** A lively session for a party/group, you will learn fun routine(s) to iconic songs. Why not let your hair down and make memories with your friends and family! All will definitely sleep well that night! No dance experience needed.

• **One-to-One/Home Visits** are also an option for these classes, if you want more individual focus or cannot leave the house.



## Berkshire's Exclusive Skin Health & Laser Clinic



SKIN HEALTH

### Radiant skin, the natural way ...

... can be yours with our non-surgical face & body contouring & lifting treatments. Our bespoke skin rejuvenation programmes are uniquely developed using science & technology from around the world.

As a specialist laser and skin clinic, we are here to help you.

- Non-surgical face, neck & body contouring
- Acne & rosacea specialists
- Pain-free laser hair removal
- Wrinkle & skin remodeling
- Cellulite/fat reduction
- Emsella for incontinence
- Non-surgical blepharoplasty
- Emsculpt body sculpting



Andresa Aesthetics Exclusive Skin Health and Laser Clinic  
Tel: 01635 800183 | [info@andresa.co.uk](mailto:info@andresa.co.uk) | [www.andresa.co.uk](http://www.andresa.co.uk)  
Lower Wasing Barn, Wasing Lane, Near Woolhampton RG7 4LY



## JOIN · RENEW · UPGRADE

Pay+Play · Members · Member PLUS

NEW BOOKING SYSTEM



OPEN THE APP

CLICK

AND SCAN THIS QR CODE

**THE sports**  
clubhouse



CONNECT TO  
Bradfield Tennis Centre



BRADFIELD COLLEGE  
WITH THE PLAYER  
NATIONAL HALLMARK  
RESOLVING



0118 964 4603 // 0118 964 4566

@BradfieldTennis

[tennisinfo@bradfieldcollege.org.uk](mailto:tennisinfo@bradfieldcollege.org.uk)



We stock delicious local, British & Continental cheeses as well as a wide range of delicatessen products. We're proud to support small artisan producers.

We pride ourselves on our customer service and are dedicated to providing cheese at its very best.

Come and visit us at 17 Reading Road, Pangbourne

Find us on Facebook – The Pangbourne Cheese Shop

Follow us on Twitter @PangCheeseShop

[www.pangbournecheeseshop.co.uk](http://www.pangbournecheeseshop.co.uk)

0118 984 3323

## PICTURE FRAMING PICTURE RESTORATION

**R. G. Bridgewater**

*(established in the trade since 1956,  
apprenticed at Reading Fine Art Gallery;  
also with Picture Crafts of London Street, Reading)*

- Oils and pastels restored
- Watercolours, engravings, prints de-foxed and cleaned
- Conservation mounting and framing
- All aspects of framing undertaken  
*(tapestries, silks, butterflies, medals, etc)*

**Tel: 0118 984 4622**



## Cold nights. Warming dinners.

Try one of our award winning pies today -  
the perfect comfort food this Winter.



Visit our website for more information.

[greensofpangbourne.com](http://greensofpangbourne.com) 0118 9842063



GoPButchers



GreensOfPangbourne

## PUPPY AND DOG TRAINING



## ONE TO ONE TRAINING IN YOUR OWN HOME WORKSHOPS AND CLASSES

Contact: Sandra Emmons

Telephone: 07973 272911

Email: [sandra@happipup.co.uk](mailto:sandra@happipup.co.uk)

Website: [www.happipup.co.uk](http://www.happipup.co.uk)



**REBECCA KINGWELL**

FINANCIAL PLANNER

Comprehensive, bespoke, financial advice & planning



Rebecca Kingwell  
BSc (Hons), DipFA

Would you like to start making  
better provision for your future and  
retirement?

Do you need help understanding  
your existing pension  
arrangements?

I offer specialist advice on pension  
planning, investment planning,  
savings, tax efficiency and life and  
critical illness protection.

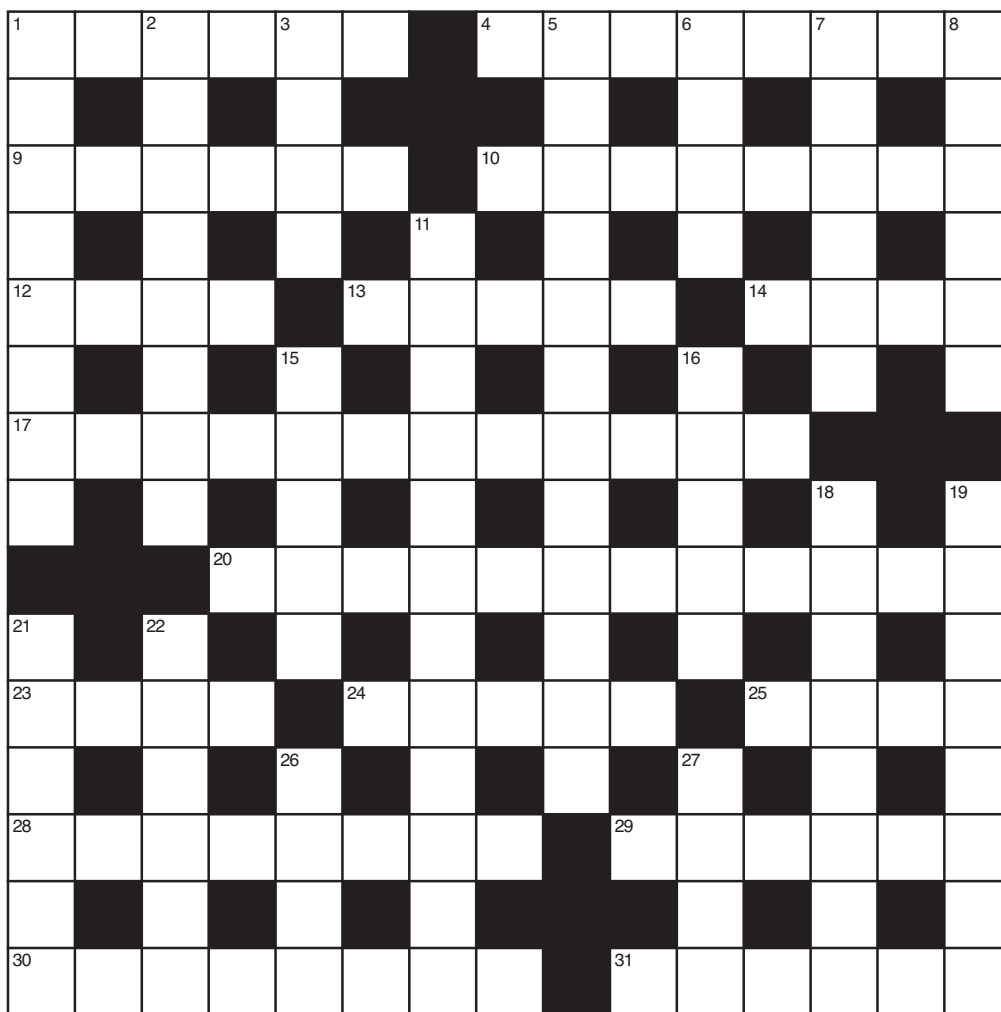


e: [rebecca.kingwell@sjpp.co.uk](mailto:rebecca.kingwell@sjpp.co.uk) t: 0330 053 6797

[www.rebeccakingwell.co.uk](http://www.rebeccakingwell.co.uk)

Oxfordshire · Berkshire

Rebecca Kingwell Financial Planner is an Appointed Representative of and represents only St. James's Place Wealth Management plc (which is authorised and regulated by the Financial Conduct Authority) for the purpose of advising solely on the Group's wealth management products and services, more details of which are set out on the Group's website at [www.sjp.co.uk/products](http://www.sjp.co.uk/products)



CANTOR'S CROSSWORD NO. 21

## ACROSS

1. Off-colour, on and off-shore? That sounds absurd (6)
4. Strong hint here you could come undone in seeking a solution (8)
9. Initially the officer in charge overall quietly precedes the Sovereign (6)
10. It seemed a simian imitator took in a soft fruit (8)
12. Included an afterthought in ecclesiastical building (4)
13. On pitch, not something you would particularly want to own up to (5)
14. Sounds a tedious sort of hunt (4)
17. So let's take the plunge and shell out for snails' tongues for a change! (12)
20. You need to keep a grip on time or lose your first place (12)
23. Vital for a flying start . . . sort of chocks away . . . or nearly? (4)
24. Very odd in the end finding a South African looking over Salisbury (5)
25. Bargain trip to hairdresser (4)
28. A final dramatic curtain twitch here – mainly for musical effect (8)
29. Mysterious stuff: stick finally with the regressive Academician from the start (6)
30. Look, I ran insets to show how to stay on track (8)
31. Initially came down to earth in Hollywood (6)

## DOWN

1. You're the Lions' captain! Here it's basic Leo – lead, mix in – do all that stuff (8)
2. Model's authoritative role assertion (8)
3. Quite unbelievable! Right here, that is central (4)
5. Controversial, contradictory instruction to tug-of-war team (2,7,3)
6. This type of friendly? So the Queen finally sees her role? (4)
7. Straight on, we're told – quite tight, so breathe in (6)
8. Sounds like they could be taken as wholly instructions (6)
11. "... 'tis a . . . devoutly to be wished" (Hamlet) (12)
15. It was told there was nothing to be seen in the Avon dramatist (5)
16. That makes how many of them? On the one hand . . . and on the other (5)
18. Nothing special flagged up here then? (8)
19. Hardly a generous means of nourishment (4,4)
21. Alphonse set his cap on escaping, despite there being a national ban on, still (6)
22. Someone who asks personal questions? To a T, yes (6)
26. Naturally, the Pop Art movement's founder (4)
27. It's quite clear, I am singing the solo here (4)

(ANSWERS ON PAGE 22)

## Rooke Holistic Qigong

PROMOTING HEALTH, FITNESS & WELLBEING



*Weekly Qigong Class – Pangbourne Village Hall  
Tuesday mornings 10:30 to 11:30*

Gentle, meditative movement to calm the mind and improve balance, coordination and strength. No mat work required. Beginners welcome. Pay as you go.

**For more information or to book:**

Call Wendy on 07528 708650

Email [wendy@rookeholistic.co.uk](mailto:wendy@rookeholistic.co.uk)

Or visit <https://www.rookeholistic.co.uk>

## Revitalise Foot Care

Mobile Foot Health Professional

Nail trimming, cracked heels, corn and callus removal, fungal infection, thickened nails and verrucae advice.

**Contact Karen on 07542 676158  
or 0118 3435579**



[www.revitalisefootcare.com](http://www.revitalisefootcare.com)  
[revitalisefootcare@gmail.com](mailto:revitalisefootcare@gmail.com)



## HIRING NOW

### JUNIOR TO CREATIVE DIRECTOR HAIR STYLISTS

- Opportunity to work alongside an award winning team in a brand new establishment.
  - Salary competitive with benefits
    - Permanent
    - Full and Part time positions available
    - Pensioner
  - Must be a motivated, passionate and confident individual with an eye for detail
  - Excellent customer service is essential
- Email your CV along with a covering letter to [recruitment@virgobeauty.co.uk](mailto:recruitment@virgobeauty.co.uk)



**VIRGO BEAUTY**

EST. 1992

# Cosmetic & Laser Skin Clinic



- laser hair removal
- lines / wrinkles
- crows feet
- lip enhancement
- microdermabrasion
- skin tightening
- brown spots
- skin peels
- mole, cyst, skin tag
- tattoo removal
- facial / leg veins
- Vaser - fat removal
- eye lid surgery
- dermaroller
- underarm sweating
- acne

*Professional, Caring and Confidential*

Treatments for Men and Women

The  
**CHILTERN** *medical clinic*

Dr N. Munnelly Medical Director



60 Broad Street • Reading • RG1 2AF  
1 Thames Court • High Street • Goring • RG8 9AQ

**HIGHLY SKILLED DOCTORS RENOWNED FOR EXCELLENCE**

**Call 01491 873 989 or 0118 958 2016**

**[www.chilternmedical.co.uk](http://www.chilternmedical.co.uk)**



# JANUARY OPEN WEEKEND

Join us on the 15th or 16th January 2022 from 10.00am until 6.00pm  
for **FREE Swim Sessions - FREE Taster Classes\***

*\*Pre-book your slot by telephone, or scan this code*



BOOK HERE

**Membership Deals available on the weekend:**

**JOIN IN JAN GET FEB FREE\*\***

*\*\* (Offer applies to Direct Debit memberships) - Annual Deals available. T&C's apply. Offers apply to full price membership rates.*

*Blue Light and NHS staff discount available (bring ID)*




## BRADFIELD BENEFITS



 No Joining Fee


 Flexible Membership

 1-2-1 Personal Training

 Fitness Classes for All Levels

 Family Friendly

 Stunning Location

 Cardio & Resistance Gym

 25 m Indoor Swimming Pool

*\* No contract or joining fee*



BRADFIELD COLLEGE SPORTS COMPLEX

email: [frontdesk@bradfieldcollege.org.uk](mailto:frontdesk@bradfieldcollege.org.uk) tel: 0118 964 4600



[www.bradfieldsportscomplex.co.uk](http://www.bradfieldsportscomplex.co.uk)



# Pangbourne Club

NEW  
MEMBERS  
WELCOME



## Facilities

- Air Con throughout
- 3 full size snooker tables
- Pool Table
- 2, 2mx2m projector screens and large TV's
- BT Sports
- Conference Facilities
- Function Room for hire with kitchen facilities and licenced bar

## Entertainment

- Live regular entertainment
- Bingo every Thursday evening
- Regular exercise classes
- Weekly raffles

LOWEST  
DRINK  
PRICES  
IN THE  
VILLAGE



## Teams

- Crib teams
- Snooker Teams
- Table Tennis



## Objectives

PWMC is run as a non-profit making organisation by its members through an elected committee, which provides a social facility for residents of Pangbourne, the surrounding area and for people working in the village.

## Pangbourne Club

Rosewood Hall, Whitchurch Rd, Pangbourne, Reading, RG8 7BS

t: 0118 9842885

e: [info@pangbourneclub.co.uk](mailto:info@pangbourneclub.co.uk)

Visit us on Facebook

[www.pangbourneclub.co.uk](http://www.pangbourneclub.co.uk)



## THE NEW YEAR AT PANGBOURNE TENNIS CLUB

### WELCOME TO 2022!

If one of your New Year's resolutions is to take more exercise, tennis could be for you! These days, tennis is very much a fitness thing. Leading tennis coaches point out that tennis, on its own, is enough to keep a person fit into the 80s. So we are keen to keep everyone playing all year round for great exercise and fun. If you are not already a member, winter membership is available to take you up to the start of next season on 1st April.

### A SMASHING FINALE TO 2021

Members got together to end the year in festive style at the now traditional fun, American tournament on Sunday 5th December. The enthusiastic group got into the swing of the season and braved the traditional December weather for an afternoon of quick-fired matches. Congratulations to our winners Harry Latimer and Harry Fisher and runners-up Dorothy Buggle and John Alderton.

### WINTER COACHING – STARTS ON SUNDAY 9TH JANUARY

Over the winter, Damian Lane will be coaching on Sundays from 11:00 to 12:30 from January to the end of March.

"Pay and play" is £10 per session for members and we offer discounts for block bookings in advance. Non-members are also welcome (the standard cost is £15 per session). Full details and the booking form are on our website or email us at [info@pangbournetennis.org](mailto:info@pangbournetennis.org) to find out more.

Looking ahead to the lengthening evenings and warmer weather, our spring programme for adults gets underway on Tuesdays in early April.

### SOCIAL TENNIS OVER THE WINTER

Social doubles sessions are running on Saturdays each week (weather permitting) at 13:30 – 15:00. The very popular and competitive but friendly singles box league are also running. If you are interested in taking part and have not already signed up, please get in touch at [info@pangbournetennis.org](mailto:info@pangbournetennis.org)

### GET READY TENNIS FOR JUNIOR TENNIS THIS SPRING – FROM 28TH MARCH

This year we are offering taster sessions for junior coaching on Friday 28th March and 4th April before the full main term which starts on Friday 22nd April and runs until 15th July. Full details are available on our website or contact us at [juniors@pangbournetennis.org](mailto:juniors@pangbournetennis.org) to register your children.

If you have any questions about the club or just want to find out more, email us at [info@pangbournetennis.org](mailto:info@pangbournetennis.org), check out the website [www.pangbournetennis.org](http://www.pangbournetennis.org) or come to one of the social sessions. The club is located between the river and the railway on the Recreation Ground and we share the club house with Pangbourne Bowls Club.

Pangbourne  
Tennis Club Committee

**pangbourne**  
tennisclub

## PANGBOURNE HERITAGE GROUP

NELLIE HENDY

Nellie came from Reading to live with her uncle in Pangbourne because she had lost members of her family from consumption, and the cleaner air of the village was thought to be beneficial. Her uncle Sam Butler was the local call merchant and he used to keep nine horses in his stables at the bottom of the garden. into her old age Nellie did all her own mowing and was a sight to behold walking behind her petrol driven mower which she always started herself.

Nellie's house was called Cassington, and as you can see from the photos, it was in Station Road. Her memories go back to her childhood in the late 1890s and early 1900s, and this article was originally written in 1968 (approximately). She died about ten years later, and the house was demolished to be replaced by Willow Court apartments. These are Nellie's own words and opinions.

Come for a walk with me and I will show you a beautiful little Thames side village, Pangbourne. The village was small and compact with one main street running through it from Reading to Oxford. A dusty street in summer and muddy and rutted in winter. It carried horse traffic just travelling to the station or nearby villages and when the Reverend Henry Wilder of Fulham Rectory drove through in his first motor car the villagers were agog with amazement. Station Road was then named Oxford Road. It was narrower and heavily shadowed by a thick belt of lofty trees and a wooden fence outlining the rectory lands. Shooters Hill was an open walk of great beauty, and many a time have I run, skipped or rolled down the sides to land on the dusty road where little traffic passed, or watched the horses towing barges along. Sots Hole was the landing spot for the big Thames barges which were loaded with timber from the estate above.

The Wharf was a charming spot not a rubbish dump as now and in the large black shed was held the High Tea in which the entire village joined on the occasion of Queen Victoria's Diamond Jubilee. The towing horses generally passed this way whilst the barges were poled through the lock. The river was a source of great enjoyment, sculling or paddling a canoe or punt, and one Saturday in August river sports were held when much laughter was caused by the men climbing a greasy pole set across a stretch of the river for the prize of a pig, a valuable gift in those days.

Round behind the church was a rough road which cut through coarse grassland. This is now Riverview Road over which we often walked to admire the lovely scene of the Thames flowing serenely along, and pedestrians

could be plainly seen crossing the old wooden bridge to Whitchurch. Often I have peeped into the old forge and seen the sparks fly and heard the anvil ring as the horse was shod. Opposite was the village lock up, the round building now in Mrs Thimbleby's garden. I don't thin it had much use.

Tidmarsh Road was a favourite walk, there being hardly any traffic and few houses. Nothing but fields from Pangbourne Lodge to Monks Rest and again to Flowers Farm. Green Lane was a lane, the haunt of nightingales. When D H Evans, the London draper

bought Shooters Hill House the village began to acquire a new face. The hill was closed to the public, it having been proved that rates had always been paid by the owners and eventually the Seven Deadly Sins were built, to the consternation of the villagers.

The Square was particularly reconstructed. Shops and the Constitutional Club buildings being erected where once was just a brick wall enclosing the grounds of Howarth Lodge. More shops were built between the old chapel and the railway embankment where there had been three or four houses.

The bridge over the river Pang was narrower and often in the summer the drivers of carts and horses drew across the stream for a cooling down or just a drink for the animals. The old GWR gave good, punctual and cheap transit into Reading and around. The village was a complete unit, the better off helping the needy, with the Rector taking the lead in all affairs. Pangbourne was a summer resort for folks fond of boating and quietude, the Swan and Elephant hotels being well patronised. With the coming of the motor car the genial easy way of living has vanished and the village is now notorious for its noise and petrol fumes. It is populated by people with a different outlook and way of life.

Here ends Nellie's piece. Next time you was around the places she has described, try to picture them as they were. If you want to know more of village history, our book *Shops, Trades and Businesses* is still for sale in the Rhubarb Tree, Garlands, Pangbourne Cheese Shop and the Library. If you have any information or photos, please contact our archivist, we are always pleased to know more about the village heritage.

With grateful thanks to Ron Holyday, who passed these memories on to me, and Jane for the accompanying photographs. Happy New Year from the Heritage Group.

*Lesley Crimp*



*Nellie Hendy's house*



## PANGBOURNE ART GROUP

Pangbourne Art Group have now been back in the Village Hall since July when all COVID restrictions were finally lifted. It was so nice to see members in person after all our months of Zoom only by the Committee. At our very first meeting on the 21st we welcomed 11 of our members back into the hall. Since then the numbers have steadily increased with people feeling more confident about coming out. We have now settled into something resembling our pre-COVID afternoons. We have also had eight new members join us after accessing our website ([www.pangbourneartgroup.com](http://www.pangbourneartgroup.com)) or seeing our Pangbourne Magazine articles.

We decided that we would hold our Annual Art Exhibition on Saturday 16th and Sunday 17th October. Following a Committee meeting, Donald MacDonald was willing to take on the job of organiser which he did to an excellent standard. Considering we hadn't had one for two years it ran very smoothly with lots of help from our members and also family members. During the two days we welcomed many visitors who were very appreciative of our Art Work. We sold 16 paintings and 43 greetings cards by various Artists. After all the outlay we broke about even and contributed £162.40 to the Parkinson's Society from our takings on the door. Visitors were also able to enjoy refreshments of teas/coffee and cakes. The favourite painting voted on by the public was Donald MacDonald's lovely painting of the River Stour.



Our next venture coming up very shortly is a morning session at the Art Cafe in Whitchurch at the Old Stables on Saturday 11th December. We again will be doing this for a Charity, Dementia UK, and will have Art works/greetings cards/hand made jewellery on display to view and purchase. Also of course there will be tea/coffee and delicious homemade cakes, so we all hope this will be a successful morning.

Our Chairman Debbie has arranged a Christmas Lunch for us in December at the Greyhound Pub, Tidmarsh with 22 members booked to go. Finally we will have a get together at the Village Hall on our last Wednesday before Christmas, 15th where we traditionally have a quiz, some "turns" by members, plus mulled wine and mince pies.

We will also have our annual Christmas Card competition for all members to take part in, and the winner will be the most voted for by all present.

We are all looking forward to a fruitful New Year, with some 'Plein air' painting days out and hopefully one or two full day workshops. Happy Painting!!



---

Do you belong to a Local Organisation?

Do you have news you'd like to share? We'd love to hear from you . . .

Send your article to [pangbourne@heraldgraphics.co.uk](mailto:pangbourne@heraldgraphics.co.uk) by 4th February for inclusion in the next magazine\*.

*(\*please also include any images separately; receipt of copy is not a guarantee of inclusion)*

---

# LOCAL ORGANISATIONS

---

## PANGBOURNE ALLOTMENTS

As I write, we are due to be hit by the first real blast from the Arctic so the allotments are being bedded down for the winter – but John Rowlands will be ready for warming winter meals with his wonderful crop of chillies!



### DAFFODIL BULB-PLANTING

At the end of November, a small band of volunteers planted over 100 daffodil bulbs at the bottom of the allotments, so we look forward to a colourful display next spring as people walk down the track to the field.

The young trees planted round the boundaries have almost all taken and are getting themselves established. Thanks to all who have cared for them and watered them through the summer.



Richard Caesar is trying out Kalettes which are a cross between Kale and Brussels sprouts and are supposedly highly nutritious. They are coming along well so he is hopeful of a good crop. They have several alternative names – Flower Sprouts, Petit Posy, Brukale, or Brusselkale! They also seem to be marketed as ‘Lollipops’, according to Wikipedia.

On a more sombre note, I got a report of the theft of pumpkins from a plot, presumably before Halloween. Since I wasn’t told till nearly a month later, it wasn’t possible to check CCTV footage. Please report any thefts or break-ins as soon as possible so the police can be told and steps taken.

### BEE REPORT

John White, one of our resident beekeepers, reported on 25 November:

*“I went this morning to the bees. Five degrees outside and not a bee flying. BUT within they are busy and hungry. This year has been one of the worst in living memory for bees and beekeepers in the south of England. The bees are hungry and we are having to nurture them through the winter this year, hence the feeding by the bees. They need us as much as we need them. Fortunately, they are in good hands!”*



Those who are members of the NSALG are enjoying scanning the King’s Seed Catalogue for discounted seeds and looking forward to next year’s new season. We have welcomed three new members recently, and if you would like to join the short waiting list, please contact pangbourneasstclerk@gmail.com

---

## CANTOR’S CROSSWORD NO.21 ANSWERS

### Across

1 SCILLY, 4 INNUENDO, 9 COPPER, 10 APPEARED, 12 APSE, 13 GOALS, 14 BOAR, 17 LANGOUSTINES, 20 PRIMOGENITOR, 23 AERO, 24 SARUM, 25 SNIP, 28 OPERATIC, 29 ARCANE, 30 ENTRAINS, 31 LANDED

### Down

1 SOCIABLE, 2 IMPOSING, 3 LIES, 5 NO PULLING OUT, 6 USER, 7 NARROW, 8 ORDERS, 11 CONSUMMATION, 15 BOARD, 16 BEANS 18 STANDARD, 19 DRIP FEED, 21 CAPONE, 22 PRIEST, 26 DADA, 27 ARIA

---

## HAPPY 2022 PANGBOURNE

I gave a shout to members asking for any images that encapsulates Autumn for inclusion in the next edition of the *Pangbourne Magazine*. These stunning images by Tilly Jamieson were the first to arrive in my inbox, I share 'At Home' *Streatley Hill* and 'The Colours of Autumn' captured at Nuneham Courtenay Arboretum.



## JANUARY

**Wednesday 5th –**

### **Improving your Photography**

Martin Patten DPAGB LRPS

AFIAP BPE4 presents a talk designed for beginners and

intermediate which will also work for those who are looking to improve or broaden their photography into different genres.

**Thursday 6th – our first In-House Zoom meeting of 2022. 12th – Print Competition – no set subject (a favourite)**  
Varied prints of our choice this evening to be judged by Rojer Weightman from the Stoke Poges Photographic Club.

### **19th – Japan and Brazil**

Brought to you by one of the club's finest Natural History photographers, Nigel Glover-Wright LRPS who shares his magical images taken in the winter snows in Japan and the Pantanal area of Brazil.

### **26th – An Evening with Fenner & Lewis . . . aka Nige and Ray**

A presentation of superb images from two of our most experienced photographers.

Digital images for next week's Natural History Competition should be submitted by email no later than today. Prints are required tonight – titles should be sent to the print entry e-mail address.

## FEBRUARY

### **2nd – Natural History Competition**

This popular annual competition will be judged this evening by Steven Galvin LRPS from the Marlow Camera Club.

### **Thursday 3rd – In-House Zoom Meeting**

### **9th – An evening with Richard and Claire . . .**

Tilson that is . . . one of our married couples and the third of our "Members Present" evenings which promises to be somewhat different/varied from the rest.

### **16th – \*\*\*The Art of Wildlife Photography\*\*\***

Professional photographer Tom Way makes a return visit with a selection of stunning artistic images from around the world. This is definitely an evening you must not miss, comes highly recommended (by all at WHCC). [www.tomwayphotography.co.uk](http://www.tomwayphotography.co.uk)

### **23rd – Digital Competition No.3**

Once again a no set subject for Round 3 (hurrah!) – our images will be judged by Mark Buckley-Sharp making his second visit this season. *Note: Round Three of the Rosebowl Competition is taking place tonight at the Leighton Buzzard Photographic Club.*

Lyn Higgs



*During our season WHCC meet  
mainly on a Wednesday evening at  
the Village Hall, Manor Road,  
Whitchurch on Thames at 8.00pm.*

*Find us at  
[www.whitchurchhillcameraclub.com](http://www.whitchurchhillcameraclub.com)  
for further details.*

# LOCAL ORGANISATIONS

---

## THE PANGBOURNE BAND

After two years of utter mayhem and disruption, I am pleased to report that the Band is still going strong and sounding as great as ever.

The first lockdown on 23 March 2020 put an end to everybody's plans but before the second lock-down on 5 November 2020 we did manage to squeeze in three socially distanced rehearsals at Rushall Manor Farm in their Black Barn. In the meanwhile, Zoom kept us in touch with each other.

Despite a tantalising promise that Christmas 2020 might be on, the Government shut it down in our part of England and we did not even get to play round the streets of Pangbourne. Did you miss us? We missed playing carols for the lovely people of Pangbourne.

We started 2021 in lockdown again with nothing happening until restrictions were finally lifted in the summer. On 14th July we finally went back to live rehearsals at the Black Barn where ventilation and scope for social distancing were ideal for us. We are very grateful to the John Simonds Trust for making these facilities available until we were able to get back safely to the Village Hall in September.

Our thanks, too, go to Rob Burnage for putting together a risk assessment, organising safety supplies, ensuring we were checked in properly on arrival and supervising the cleaning and layout of chairs. I am pleased to say that everyone who attended rehearsals followed the rules for each other's safety. So far, at the time of writing, I'm not aware that anybody with Covid-19 has knowingly passed it on to others in the band although some of us have managed to catch it elsewhere (and followed the rules to keep our friends safe).

On Sunday 22 August 2021 we had our very first playing engagement at Sulham House. This was followed by two Sunday Bandstand concerts at Victoria Park Newbury on 29 August and Henley on 5 September. Life started to feel normal again.

On Saturday 11 September, at the Elephant Hotel in Pangbourne, we had the privilege as a band to play at the wedding of our Bandmaster Stewart to Rosie (our Chairman). This was after several postponements due to Covid-19. Our President Norman Rogerson conducted the band in Stewart's place. No time off for Rosie and Stewart, though because the following day we were at an extra rehearsal to polish our test piece for the National Contest in Cheltenham on 19 September. There were two more extra rehearsals the following Friday and Saturday.

We had been invited to play at the National Contest because we were assessed as being one of the two top 4th Section Bands in our region. We have never been to the Nationals before, so it was a whole new experience for us. We were up against the best from the other regions; and I'm pleased to say, we did not come last!

Our Band President Norman Rogerson had his 80th Birthday on 3rd November this year. Norman was MD of the Band between 1984 and 1986, having previously been an army bandsman and conductor. We have been so lucky to benefit from his expertise and encouragement over the years and look forward to many more years together.



*Norman Rogerson conducting Pangbourne Band  
at Rosie & Stewart's Wedding.*



*Norman Rogerson enjoying his  
birthday celebration with the Band.*

Christmas season started early for us with the Christmas Market at Douai Park on Sunday 21 November. It was our first chance to play Christmas music for two years.

A group of us were due to play at another Christmas Market on Saturday 27 November, but it was cancelled due to the tail end of Storm Arwen.

It has been so good to be playing again and at the time of writing we hope to be out and about in the local area in December to bring some Christmas cheer to everyone.

We rehearse on Wednesday evenings at Pangbourne Village Hall, starting 6.45pm for the All-Comers Band and 8pm for the Silver Band. We are a friendly bunch of people and welcome new players, so why not come along at 6.45pm if you are a learner (or trying a different instrument) or 8pm if you are a more experienced player?

*David Paine – The Pangbourne Band*



## PANGBOURNE & DISTRICT BOWLS CLUB

2022 marks the centenary of our Bowls Club. We have been playing bowls in Pangbourne for 100 years.

Behind the scenes, we have been hard at work in looking after the green and we have already arranged a full season of fixtures with other bowls clubs. For all this to work, we are looking for new members to join us and further information on this will be in our special feature in the next edition.

In the meantime, please make a note of our Open Day on Saturday, 9th April 2022. This will be your chance to come along and meet us and have a go at bowling for yourself. I guarantee you will not be disappointed.

*Anyone interested in joining should contact  
alan@alancopeland.co.uk or visit  
www.pangbournebowls.co.uk.*



## Thames Vale Singers

# Come and join us to 'MAKE MUSIC'

**We are your local Purley on Thames choir  
and we are looking for new members**

We don't hold auditions.  
Just get in contact, come to one of our practice nights and take it from there.  
We will meet on a Tuesday evening from 7.30pm to 9.30pm in Purley Memorial Hall  
Have a look at our website to see more about us and what we have done over the past 60 years:  
[www.thamesvalesingers.org.uk](http://www.thamesvalesingers.org.uk)

Contacts  
Judy Rayers: 0118 942 1880  
or  
Email: [mail@thamesvalesingers.org.uk](mailto:mail@thamesvalesingers.org.uk)

*Some of the music we have made*  
 West Side Story | Aida | The Phantom of the Opera | The Pirates of Penzance | The Mikado | The Barber of Seville | The Tales of Hoffman | The Gondoliers | The Pirates of Penzance | The Mikado | The Barber of Seville | The Tales of Hoffman | The Gondoliers  
 Simon & Garfunkel | Captain Jack and his Pearly Boys | The Pirates of Penzance | The Mikado | The Barber of Seville | The Tales of Hoffman | The Gondoliers  
 Mozart's Requiem | The Pirates of Penzance | The Mikado | The Barber of Seville | The Tales of Hoffman | The Gondoliers  
 The Pirates of Penzance | The Mikado | The Barber of Seville | The Tales of Hoffman | The Gondoliers  
 The Pirates of Penzance | The Mikado | The Barber of Seville | The Tales of Hoffman | The Gondoliers  
 The Pirates of Penzance | The Mikado | The Barber of Seville | The Tales of Hoffman | The Gondoliers



## DONATING TO THE COMMUNITY

The Club raises about £30,000 in a normal year to donate to local, national and international causes ranging from individual cases of need, clubs and societies, rescue services, foodbanks, global polio elimination and disaster aid.

Here are a couple of examples of recent local donations:

### THE ICING ON THE CAKE

Pangbourne Rotary Club have continued their tradition of donating 160 Xmas cakes to Readifood food bank in Reading.



These will be added to the food parcels to bring a bit of Xmas cheer to those who need it at this time of year.

This gift was made possible by collections during last year's Santa Sleigh activity.

### HEROES FOR HEROES

Unsung vaccination heroes recognised by Pangbourne Rotary Club.



Boxes of Heroes have been provided to be shared amongst staff and volunteers at some medical centres and vaccination centres in Pangbourne and Tilehurst who continue to work hard to help protect us from Covid-19 through vaccinations.

*With our sincere thanks and ongoing gratitude –  
The Rotary Club of Pangbourne.*

If you would be interested in participating in these fund-raising activities and enjoy doing good, feeling good, fellowship and fun please contact [membership@pangbournorotary.org.uk](mailto:membership@pangbournorotary.org.uk).

Our next fund-raising event is the Woodcote 10K run on Sunday 9th January. Parkinson's UK will again be the primary beneficiary with many more local deserving causes being supported too. If you are able to help on the day (marshalling and other tasks) please contact us.

Website – [www.pangbournorotary.org.uk](http://www.pangbournorotary.org.uk)  
 Facebook – @rotaryclubofpangbourne  
 Twitter – @PangbourneRot

# LOCAL ORGANISATIONS

---

## ADVENTURE DOLPHIN

May we begin our report by wishing all the readers of the Magazine a Very Happy New Year and much better one than last year. Now the booster vaccinations are being offered, and a good proportion of the Country has received the two initial jabs, we hope things will return to a new normal depending on the outcome of the new variants to Covid that will hit us from time to time.

As the new year begins it allows us time to reflect on our past year and look to the future. Our 2021 turned out to be better than we could have hoped for. We were able to start our regular programmes and clubs after Easter and were able to offer two sets of six week evening courses to introduce paddlesport over the summer. We had to reduce our numbers by 50% so we could double up on our leaders in case one of them had to isolate and we could continue to deliver the courses.

### COMMUNITY GROUPS

Gradually over the summer and into the autumn we welcomed back our regular community groups who have now all started to meet up again. If you are interested in one of the groups please contact the leader below.

Monday	9.30am – 11.30am	Tai Chi	info@karenponds.co.uk
	5.30pm – 6.30pm	Yoga	yogabyhelma@gmail.com
Tuesday	11.00am – 12.00pm	Yoga	bara.cechova@gmail.com
	6.00pm – 8.00pm	Pilates	julia.pilates@yahoo.co.uk
Wednesday	9.30am – 10.30am	Pilates	julia.pilates@yahoo.co.uk
	6.00pm – 7.00pm	Zumba	rachelzumba4043@gmail.com
Thursday	8.00am – 9.00am	Pilates	julia.pilates@yahoo.co.uk
Friday	12.30pm – 3.30pm	Art Class	art-course@hotmail.com
Saturday	6.00pm – 8.30pm	Dance Exercise	ireml@hotmail.com
Sunday	9.00am – 11.00am	Rugby	Tots

Scouts meet on a Thursday between 5.30pm – 6.30pm. Beavers and Scouts meet on a Friday between 6.30pm and 8.30pm please contact [suzanne@stout.org.uk](mailto:suzanne@stout.org.uk) for more details.

The Centre hall and meeting rooms both upstairs and downstairs are available for hire for regular groups as is the availability to use the office for a hot desk during the day. At weekends the hall upstairs is available for group bookings and parties. More details from Angela at [bookings@adventuredolphin.co.uk](mailto:bookings@adventuredolphin.co.uk).

### DUKE OF EDINBURGH'S AWARD

This year is proving to be a very busy year for us, we have 50 young people enrolled attempting to complete their Bronze Award. This has so far involved some map and navigation work, culminating in a night hike. They are now embarked on a Christmas cooking challenge using camp stoves. After Christmas the group will attend first aid training before planning their practise expedition. At the same time completing programmes of their choice in skills, helping the community and completing a physical challenge.

The Silver group have decided to do a canoeing expedition, in the new year they will be learning how to paddle. At the moment they are looking at equipment, navigation and have completed a night hike. They are hoping to complete their expedition on the River Thames in early summer. The length of time they have to complete the Skills, Community Service and Physical challenges take longer than at Bronze, but the group hope to complete by Easter 2023.

The group are well into their programmes and route preparation for their four day practise expedition on the River Wye. The group are regularly on the water canoeing to enable them to be ready by Easter next year. Their main expedition venue is yet to be decided. They had hoped to paddle the River Dordogne in France, but with Covid restrictions changing all the time a back up of the River Severn is being explored. More information please email: [DofEcoordinator@adventuredolphin.co.uk](mailto:DofEcoordinator@adventuredolphin.co.uk).

### PADDLESPOORT

The regular race training sessions on a Saturday morning are well attended, with the group now training for the winter endurance races, the Ross Warland Challenge in Banbury, Frank Lutzmore Challenge in London, followed in the New Year with the Waterside Series based in Newbury and the Thameside Races in Reading in preparation for the 125 mile Devizes Westminster canoe race over the Easter weekend. As the evenings are now dark the Tuesday evening on the water sessions have been replaced by fitness training between 7pm and 9pm on a Thursday. Next year we hope that we may have a few crews competing in the DW, so watch this space.

# LOCAL ORGANISATIONS

---



The recreational paddling on a Sunday morning has replaced the evening sessions for members and a regular team are out most weeks with either a paddle downstream or upstream from the Centre. The paddle is relaxed and the group stop off for elevenses before heading back to the Club house.

During the autumn we had a great night paddle with over 20 members participating, followed by soup and a roll. This group are now looking forward to a Santa Paddle before Christmas where we will paddle through Reading and finish at the Thames Valley Park, we are hoping for relatively good weather!

## CLIMBING

Due to Covid and the size of our climbing room we have not been able to offer our usual programme of courses. However, with more people being vaccinated the team are looking to start up after Christmas in a limited way. If you are interested please contact [Gerry.wigglesworth@adventuredolphin.co.uk](mailto:Gerry.wigglesworth@adventuredolphin.co.uk) for up to date details on what will be available.

## CONDOLENCES

We have learnt that Dave Seward Senior has recently died. Dave was the youth leader at Adventure Dolphin in the late eighties and early nineties. He ran the youth clubs and was a keen paddler running a number of trips away. Our thoughts go out to Trish his wife and his family at this time.

## VOLUNTEER HELP

We are always on the lookout for keen, enthusiastic volunteers who have some time to assist us. As you will have read above our Duke of Edinburgh's Award group is very big this year and we are needing help, we offer support and training to all our volunteers. The Trustees who are responsible for managing the building and overseeing all the clubs again are in need of help. Although I am pleased to report the appointment of Peter MacIver and Anne Huddart as new trustees to the Charity. Climbing is another area we desperately need help as our team has been hit by injury and thus we are only able to offer a limited provision, again climbing training is on offer to enable volunteers to assist. If you feel you would like to be involved please contact us on [info@adventuredolphin.co.uk](mailto:info@adventuredolphin.co.uk) where we will come back to you for an informal chat.

*For more information please visit our website [www.adventuredolphin.co.uk](http://www.adventuredolphin.co.uk)*

---

## PURLEY HORTICULTURAL SOCIETY

On Wednesday, 17th November Andrew Babucz gave the Society an interesting talk on Seasonal container Gardening in Purley Memorial Hall.

On 15th December we have a Christmas Social with Mince pies, mulled wine and a Quiz.

On 16th February 2022 at 7.45pm we be holding our Annual General Meeting.

The Trading Store will re-open the first week-end in February

Please check our website for more details.

*Marion Dabbs*



## PANGBOURNE WI



Our President, Sue Smith, welcomed members and five visitors to our October meeting and began by outlining plans for our Christmas party which would also celebrate Pangbourne WI's 100th anniversary. She also highlighted the fascinating programme that was planned for the coming months, which included speakers on a diverse range of subjects.

She then introduced Anne Howe from The Clothes Shop in Newbury to give us her talk entitled "Bring back your sparkle by revitalising your wardrobe". Anne is a frequent and very popular visitor to Pangbourne WI and always brings a range of interesting garments and accessories for us to view, and purchase if we wish. We agreed that, during lockdown(s), we had often worn the first and most comfortable thing that came to hand, but she stressed that it was worth looking in the back of your wardrobe for items that you had not worn for some time. She said that she never threw any clothes away as, if you were patient, fashions tended to return and could be brought back to life with the addition of interesting accessories. She also showed us how to ring the changes on a simple "little black dress" by the use of different coloured jackets, and stressed the importance of putting colour near your face by the use of scarves or necklaces.

As many of us had not been to the shops for some considerable time it was great to have the opportunity to try on items, and many members decided to treat themselves to something new.

At our November meeting we welcomed several visitors and three new members, who had all recently moved to the area and were happy that they had found a way of making new friends. Sue, our President, was pleased to see that many of us had taken on board the suggestions from Anne Howe at the previous meeting, and had added colour (and a little bit of sparkle) to their outfits. Sue thanked members for donating good quality items to our Bring & Buy sale and hoped we would all find some bargains at tea time.

We were delighted to welcome back Catherine Sampson to give a talk on "Living through the English Civil War". Catherine is a popular visitor to Pangbourne WI as she always seems to bring history to life in a most entertaining way.

Her talk focussed on Reading (spelt "Redding" on the old maps) and the surrounding countryside and villages, and how the Civil War affected the ordinary people and their way of life. Although in the 1600's Reading was a prosperous town, because of the thriving cloth trade, many people in the villages were barely scratching a living from the land. In 1641, shortly before the Civil War began, Reading was a town of approximately 5-

6,000 residents. However during the period 1642-48 the town was garrisoned and came under siege, switching several times between Royalist and Parliamentary control. The influx of many thousands of troops to the area, who needed to be fed, clothed and housed, resulted in severe hardship for the residents as they were expected to provide for the soldiers, with no financial recompense. Many local people lost their lives as a result of plundering, and the eventual demise of the cloth trade meant economic downfall for Reading, the effects of which lasted until the 1800s and the growth of industries such as the 3 Bs (biscuits, bulbs and beer) to the area.

Catherine entertained us with several anecdotes about individuals, and the steps they took to preserve their livelihoods. There was the husband who buried his valuables, but then died without telling his wife where he had hidden them. She talked of the sheep farmer in Woolhampton who was killed while attempting to stop the plundering. Large properties, such as Mapledurham

House, were commandeered to provide accommodation for officers. They attempted to gain entry by fixing a petard (a small bomb designed to blast down a door) to the main entrance. However, if it was set up wrongly it would backfire and kill those waiting to enter – hence the term "Hoist with one's own petard".

The soldiers also brought typhus to the area which wiped out whole families within days, resulting in the return of the plague. One poignant story was of a lady who was taken to the Pest House, even though she was well. She was determined to ensure that her meagre belongings should go to a cousin, so she wrote a will setting out in great detail her few clothes (including the material they were made from) and where they could be found.

Catherine's talk was fascinating and gave us a unique insight into ordinary people's lives in the 1600s. We all agreed that, on balance, we would prefer to live through a Covid epidemic rather than a Civil War!

We are looking forward to our December meeting when we will once more be able to enjoy our Christmas party in the company of our friends.

If you would like to join our friendly group of ladies, you will be assured of a warm welcome. Pangbourne WI meets on the second Tuesday of the month at 2.30pm in Pangbourne Village Hall, and we have a very interesting programme of speakers and demonstrations. If you would like to know more, please contact our President Sue Smith on 0118 983 3258 who would be delighted to hear from you.

*Judy Schurer*





## PANGBOURNE TWINNING ASSOCIATION

As we move into the New Year, the Twinning Association Committee wishes *Bonne Année* to all, and may 2022 be less fraught for everyone than the year just past.

Because of Christmas this issue of the Pangbourne Magazine will not be published until early January, so that we will probably already have enjoyed our *Fête des Rois* Epiphany Dinner at The Ferryboat before you read this article. We will surely have enjoyed a delicious meal and a convivial evening. Other known dates for the coming year are below.

### FORTHCOMING EVENTS

The next **French Film Night** is on **Sunday, 30th January**, at the usual time of 7.30. *Cezanne and I* ('*Cézanne et moi*', 2016), by Danièle Thompson, is about the boyhood friendship between Paul Cézanne and Émile Zola, who shared everything but whose lives took very different turns. The film has sub-titles in English.

We are holding a **Salsa Evening** in the village Hall on **Saturday 19th February**. Our expert caller, Russell Morse, will give all the instruction necessary to enjoy this form of dancing. Further details will be published shortly of what should be a fun-filled evening.

A reminder that our next **visit to Houdan** is over the **Late May Bank Holiday, Friday 27th May – Monday 30th May**.

The **Marcher et Parler** walks on a Tuesday morning will continue throughout the winter, weather permitting. They remain a very popular way of taking a stroll in the countryside, the chat being mainly in French, and with a pub lunch or coffee to finish.

Further information on any of the above events is available via our website [pangbourne-twinning.org](http://pangbourne-twinning.org) or our Facebook page <https://www.facebook.com/pangbournetwinning>.

In the meantime, a few thoughts on getting around *à la française*, for although we were never invaded by

Napoleon, and so do not owe the side of the road on which we drive to the French, a number of vehicle names are of French origin.

### VEHICLES

The **limousine** takes its name from the province of Limousin. This vehicle was first introduced in the early 1900s, but is a link with coaching days. The passenger compartment was enclosed, seating three to five persons, but the driver was only protected from the elements by a roof projecting forward over the open driver's area in the front, with no sides. A *limousine* was actually a shepherd's cloak worn in the Limousin area, and was perhaps what the driver wore to keep warm and dry.

Also close to coaching was the **cabriolet**, a light two-wheeled one-horse vehicle. In fact it was so springy that its name comes via French from Italian, meaning 'leap in the air'. When the cab became mechanised, an automatic contrivance was added to show the distance covered, giving us a **taximètre cabriolet**.

If you don't fancy a taxi you might take a **bus**. Originally a 4-wheeled public passenger vehicle, when introduced in France in 1829 it was a *voiture omnibus* – a 'carriage for all'.

From the same period, but less sophisticated is the **charabanc**, an early form of motor coach that was especially popular in the countryside. The French *char à bancs* was originally a waggon for heavy loads (*char*), into which wooden benches (*bancs*) were added down either side. These soon became seats facing forwards, but the waggon often remained open-topped into the early part of the 20th century.

Of course, when we go to Houdan we take a rather more comfortable **coach** – but that is named from a town in Hungary, and is another story . . .

Stay safe and well, and *à bientôt!*

Nigel Suffield-Jones and Lauren Kilsby



*Limousine in 1908 . . .*



*. . . and 2022.*



*Early charabanc . . .*



*. . . and a 1926 version.*



- Osteopathy & Cranial Osteopathy
- Podiatry & Chiropody
- Sports & Remedial Massage
- Acupuncture
- Reflexology
- Counselling - Adults & Adolescents
- Hypnotherapy & NLP
- Thai Yoga Massage
- Homeopathy
- Nutrition

Some of the conditions we treat at the Centre:

Back Pain Headaches Neck Pain Sports Injuries Foot Problems Sciatica  
Muscle Tension Whiplash Smoking Cessation Weight Control Stress  
& Phobias Dietary advice for IBS

Visit our website to see what else we can treat [www.thealewellbeingcentre.co.uk](http://www.thealewellbeingcentre.co.uk)



You're not normal. No one is. We are all different and we're all wonderfully unique.

At The Movement Clinic we pride ourselves on helping everyone, young and old, find a way to move more and feel better.

We don't do gimmicks or mysterious gadgets, we don't make outrageous claims, we don't offer quick-fix promises, fad diets, or celebrity exercise regimes.

We rely on decades of collective experience and expertise to establish what works for you.

So whether you're injured, in pain, stressed, overweight or just tired of doing the same thing over and over again and getting the same disappointing results, give us a call and find out how we can help.

Personal Coaching • Weight Loss • Strength & Conditioning • Running Technique • Injury Prevention & Rehabilitation  
Corrective Exercise • Physio-led Pilates • Specialist Pilates for People with Mobility Issues • Yoga • Massage • Injury Treatment  
Strapping & Taping • Neurological Physiotherapy for Adults and Children

[www.themovementclinic.co.uk](http://www.themovementclinic.co.uk) • 0118 327 9405 • [info@themovementclinic.co.uk](mailto:info@themovementclinic.co.uk)

The Boathouse  
Dental Surgery

[www.boathousedental.co.uk](http://www.boathousedental.co.uk)

Tel: 01491 872394

Show off **your** smile  
with straighter teeth!

Enhance your appearance, ask us about Invisalign® clear braces.

"Amazing service and care  
from start to finish"  
Brenda Butcher



High Street, Goring on Thames, Oxfordshire RG8 9AB

Email [reception@boathousedental.co.uk](mailto:reception@boathousedental.co.uk)

Call 01491 872394 to book a consultation

BODY HEALTH

## NEW body treatments to build muscle, burn fat and reduce cellulite



- Exilis - Removes fat & tightens skin
- Emtone - Reduces cellulite & smooths skin
- Emsculpt - Muscle sculpting & strengthening

Long-lasting results





**ANDRESA**  
AESTHETICS

Andresa Aesthetics Exclusive Skin Health and Laser Clinic  
 Tel: 01635 800183 | info@andresa.co.uk | www.andresa.co.uk  
 Lower Wasing Barn, Wasing Lane, Nr Woolhampton RG7 4LY

**Louise Amanda Sheppard** (BA/Dip)

## EMDR Specialist Hypnotherapist

*Mobile Therapist covering  
Oxfordshire and Berkshire*

**EMDR Therapy**  
*(Eye Movement Desensitisation Reprocessing)*

- Trauma • Victims of Rape • Assault
- Combat • Drug Addiction • Bereavement
- Fears/Phobias • Anxiety • Depression

**Hypnotherapy**

- Pain • Anxiety • Fears • Phobias
- Smoking • Weight Management

**Age Regression/Past Life Regression  
Gestalt Therapy/Dreamwork  
Parts Therapy**

**Telephone: 07842 262583**  
**Email : lasheppard61@gmail.com**



## PANGBOURNE VALLEY PLAYGROUP

# PLACES NOW AVAILABLE

Pre-school childcare for 2 to 5 year olds. 30 hours and shared funding accepted. Morning, lunch club and afternoon sessions are available. We are located in the grounds of Pangbourne Primary School.

**(0118) 984 1661**  
**pvpvg.enquiries@gmail.com**  
**www.pvpvg.org.uk**




# Treating you like family from one generation to the next.

In a good way, of course...

## **We make buying, selling and letting easy for you.**

People come to us because they know we always do the right thing.

Because we get results and are always there when they need us.

And, most of all, because we always treat them like family...

## **Family values go such a long way...**

For more than 70 years, we've been treating people like one of our own – in Reading, Tilehurst, Pangbourne and beyond.

You'll find us friendly, knowledgeable, professional – and here for you.

With Patrick Williams, you're family.  
Give us a call and find out for yourself.

Reading: 0118 957 3579  
Tilehurst: 0118 942 0777  
Pangbourne: 0118 984 4444  
[info@patrickwilliams.co.uk](mailto:info@patrickwilliams.co.uk)



[www.patrickwilliams.co.uk](http://www.patrickwilliams.co.uk)



OPEN MORNING FRIDAY 4TH MARCH 2022

Book your place [standrewspangbourne.co.uk](http://standrewspangbourne.co.uk) | 0118 974 4726



# THE ORATORY

## SCHOOL BANK NURSE

The Oratory School is looking for Bank Nurses to work as part of our excellent Health Centre team to provide professional support and care to our pupils.

If you are highly organised, have great communication skills and enjoy working with children, we would love to meet you.

For further details please contact the Human Resources department:

E-mail: [recruitment@oratory.co.uk](mailto:recruitment@oratory.co.uk)

Alternatively, please visit our website for an application form:

[www.oratory.co.uk](http://www.oratory.co.uk)

*The Oratory Schools Association Registered Charity No. 309112 is committed to safeguarding and promoting the welfare of children. Applicants must be willing to undergo checks with past employers and the Disclosure and Barring Service.*



## WHITCHURCH PRE-SCHOOL

It was a busy and lovely Autumn Term at Whitchurch Pre-School – we welcomed lots of new children to the setting, and our joiners have been helped to settle in well by our kind and caring staff. Places are still available at Pre-School for Spring and Summer term this year but are filling up fast with some sessions almost fully booked – fantastic news for the continued viability and success of the preschool, but we recommend that you get in touch as soon as possible to register if you are thinking of signing your child up to join in 2022.

The complete refurbishment of our indoor classroom in 2021 is really paying dividends as the children are making the most of the fantastic set up including a magical book den, home corner, huge activity mat, tray tables and more. Our fundraising target this year is to pay for replacements and improvements to the wonderful outdoor space – in particular the sandpit, decking and astroturf areas – as well as essential repairs.

We made changes to our sessions last term so that our range of activities and learning now rotates across the days of the week over the course of each term – from baking to early years science, outdoor learning, music and movement, art and craft. Rising 5s activities, which prepare children for starting Primary school, are incorporated into all sessions. This means children get a chance to participate in a whole range of fun activities, no matter what days they attend.

The Pre-School team ran a fantastically creative and engaging range of activities for the children last term. Exploring nature and finding minibeasts in the preschool garden, making nature sculptures, singing, painting, playdough and junk modelling, playground games such as Simon Says, story time in the garden, listening and learning games with Happy Bear, even brushing dinosaur teeth which is very popular!

The Pre-School also runs early years science sessions which are very captivating and sometimes just a little bit messy – the children have been finding out what substances dissolve in water and mixing them up; seeing which items float; learning about bubbles and colourful celery science – learning how plants suck up water by capillary action; even chromatography with skittles sweeties!

All of this makes our Pre-School a really special place for our little people to grow and learn.

## SUPPORT US

We are a registered charity and rely on fundraising, with a £10k target this year to make up the funding shortfall caused by Covid 19, to pay for roof repairs and for a new sandpit. Please support us if you can . . .

### Three FREE and EASY ways you can support Whitchurch Pre-School

- Become a Co-op Member and select Whitchurch-on-Thames Pre-School as your local community cause. For every £1 spent 2p will be donated to our cause.
- Please use <https://smile.amazon.co.uk/> and enter Whitchurch-on-Thames Pre-School as your chosen charity, 0.5% of your order value will be given to the Pre-School when you shop via smile.amazon.co.uk
- Sign up to [easyfundraising.org.uk](https://easyfundraising.org.uk) to support “Whitchurch Pre-School – Whitchurch-on-Thames”. When you use the easyfundraising website or app to shop with retailers like John Lewis, M&S, H&M, the retailer sends us a donation of up to 5%. You can register here (completely free): [https://www.easyfundraising.org.uk/causes/whitchurchonthamespresch/?utm\\_campaign=raise-more&utm\\_content=w4](https://www.easyfundraising.org.uk/causes/whitchurchonthamespresch/?utm_campaign=raise-more&utm_content=w4)

Please also look out for and support our fundraising activities. You can help us reach our £10k fundraising target, by donating online, as we try to make up the funding shortfall caused by Covid19. We are raising money for roof repairs and to replace the sandpit and outdoor decking and astroturf areas. You can scan the QR code here or donate at: <https://donate.giveasyoulive.com/charity/whitchurchpreschool>.



## JOIN US

At Whitchurch Pre-School, our team is committed to providing a secure and caring environment where children can learn and develop at their own pace within a happy atmosphere. We cater for children aged from 2½ – 5 years and are situated in an idyllic village location, with links to Whitchurch Primary School. We accept 2yr, 15hr and 30hr government funding, and we offer flexible sessions 8.30am to 3.15pm weekdays, term time only. Limited sessions available this academic year, register as early as possible for remaining spaces, to be added to our waiting list and for places in September 2022.

Thank you for all of your support.

Kathleen Barrow  
Manager, Whitchurch Pre-School

[hello@whitchurchpreschool.org](mailto:hello@whitchurchpreschool.org) | 0118 984 4516 | [www.whitchurchpreschool.org](http://www.whitchurchpreschool.org)



## PANGBOURNE VALLEY PLAYGROUP

**Pangbourne Valley Playgroup (PVPG)** is a charity, not-for-profit pre-school located within the grounds of Pangbourne Primary School, which offers many benefits; not least the close link with the school, enabling a smooth transition into full time education.

We are open Monday to Friday during term-time and work with a unique, child-centred approach, where children can learn and develop at their own pace within a happy atmosphere.

### WE OFFER FREE CHILDCARE!!!

PVPG offers childcare that is **FREE** to eligible 2-, 3- and 4-year-olds. This includes 15 hours **FREE** childcare for **ALL** 3 and 4 year olds, and 15 and 30 hours **FREE** childcare for eligible 2-4 year olds. We have places **available for September!** To find out more, please email us at [pvpg.enquiries@gmail.com](mailto:pvpg.enquiries@gmail.com).

### TRANSITION TO SCHOOL

PVPG works in conjunction with Pangbourne Primary School to pick up children that attend the nursery class (3-4 year olds; Foundation Stage 1) at 12 noon to allow for a longer day of childcare.

### FUNDRAISING AND EVENTS

We have been incredibly overwhelmed with the support and donations that we have received so far this year, especially after the year we have all had due to COVID-19 restrictions. We would like to thank every single one of you!!! This wouldn't be possible without you!



A Huge Thank you to Freemasons and 'Worshipful Master Toks Aluko' who came by to present us with a cheque of **£500**. We have brought a new laptop and tablet for staff for the first time in five years! We will also be refreshing the tablets for our children to use.

**OCTOBER RACE NIGHT:** 'And What A Night It Was!' with lots of money generously 'donated' in support of our Playgroup, you helped us raise **£1519.74!!!** This has gone straight into our Garden and Playground Project Fund. Many thanks to the Working Men's Club for letting us hold the event there! We appreciate everyone who came along and took part that evening, and a huge thanks to our sponsors: *Collins Hardware, Barking Mad,*

*Patrick Williams, Strutt and Parker, Stranrod Motors, Howard Finley Care, Prospect Street Dental Practice and Carney Construction!*

**PANGBOURNE VILLAGE COUNCIL:** We received a **£3,000!!!** grant towards our Garden and Playground Project Fund. A **Big Thank You** for your support. This was double matched by Greenham Trust to our limit, giving us **£5412!**

**MUM'S MARKET STALL:** We raised **£257.20** (doubled by Greenham Trust via the Good Exchange).

**WEST BERKSHIRE COUNCIL:** We have also been given a **£22,564!!!** grant towards our Garden and Playground Project Fund. Massive Thanks to you all!

**CO-OP:** Ben Whitter, Manager of the Co-op, kindly presented to us a cheque for **£2,786.13!!!** raised by the shoppers in Pangbourne's two Co-op stores. Thank you for your support!



### PROJECT

We have raised over **£45,000** for our **Garden and Playground Project** and we can't thank everyone enough, but we always need to raise more money. Every year we face a financial deficit due to insufficient government funding and we fight hard to raise the thousands of **££££** needed to stay open. Our mission is to provide affordable childcare for years to come!!!

If you would like to support us, visit our fundraising page on our website [www.pvpg.org.uk/fundraising](http://www.pvpg.org.uk/fundraising).

To find out more about our garden project, and how you can support us, or to donate please visit the link below: <https://app.thegoodexchange.com/project/18804/pangbourne-valley-playgroup/pangbourne-playgroup-playground-refurbishment>.

### COMMITTEE NEWS

If you have time and dedication to support our committee then we are always on the lookout for new members and would be keen to hear from anyone that might be able to help.

*Best wishes and stay safe from the Pangbourne Valley Playgroup committee and staff.*

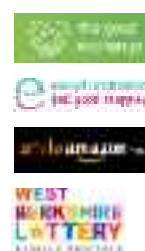
[www.PVPG.org.uk](http://www.PVPG.org.uk)

### PLEASE SUPPORT US!

[www.easyfundraising.org.uk](http://www.easyfundraising.org.uk)

[smile.amazon.co.uk](http://smile.amazon.co.uk)

[www.westberkshirelottery.co.uk/support/pangbourne-valley-playgroup](http://www.westberkshirelottery.co.uk/support/pangbourne-valley-playgroup)





## FRIENDS OF PANGBOURNE PRIMARY SCHOOL

FOPPS (Friends of Pangbourne Primary School) is the PTA and charity which supports the children's education and experiences. We are a small, friendly group of volunteers who are always looking for new members and support.

We'd like to open by saying a huge thank you to everyone in the community who has supported us in 2021, and we wish you and your families a Happy New Year!

For 2022, our fundraising is focused on the Secret Garden area of the school and its improvements. This small wooded area is a fantastic outdoor learning resource used by the whole school, and the key aim is to replace the fencing, improve the planting and make the area safe for the children to fully enjoy.

### 2021 FINISHES WITH A BANG!

We were thrilled to be able to bring back two of our main fundraising events in 2021. The first being the Pangbourne 10K run held on Sunday 3rd October, where over 120 runners completed the course and the event raised £1600.

**The Pangbourne 10K will return in 2022, and the date is set for 18th September.**

The second event was the hugely successful **Pangbourne Fireworks** that took place on Saturday 6th November, and made a record breaking £11,500.

Over 2000 people attended and were treated to a thrilling 20 minute firework display and bonfire, along with a licensed bar, professional food trucks, cakes and hot drinks, glow toys and amusement stalls.

We would like to thank all of our amazing volunteers who all donated their time for free, to make this event what it is. From parents and children at the school, to community minded locals, we rely on people to plan, set up, clear up and deliver this annual event as without them literally nothing would happen!

Particular thanks to the FOPPS Fireworks committee for many hours of planning and organising, an incredible amount of work goes into these events from a great many people. Thanks to the Rotary Club Of Pangbourne for their brilliant and conscientious marshalling, Strutt & Parker for their free advertising and promotion and for running a stall for us, 1st Purley and Pangbourne Scout Group for their volunteers throughout the weekend, Pangbourne Youth FC for the use of their floodlights, and Mrs Fry the head teacher of Pangbourne Primary school who gave up a large amount of her weekend to help us run the event.



Photo: Sarah Lomer

*Save the date Saturday 5th November 2022 for the next instalment of the Pangbourne Fireworks!*

### A NEW YEAR – CALL FOR VOLUNTEERS!

With the start of the New Year, we will turn our focus to planning for 2022's events. In particular, the Pangbourne 10K and Pangbourne Fireworks.

These events are run and organised by teams of volunteers, and would simply not happen without their support and time. We are always looking for new and enthusiastic volunteers who would like to get involved, so please do reach out if you are interested in helping raise funds for your local primary school by contacting [info@fopps.org.uk](mailto:info@fopps.org.uk).

### MORE WAYS THE PANGBOURNE COMMUNITY CAN HELP WITH FUNDRAISING:



#### 1. Co-op Local Community Fund

We're delighted to say that we have been chosen as one of Co-op's local community causes for this year. When you buy selected Co-op products and services, 2p for every £1 spent goes into your membership account. Co-op will split the same between like-minded organisations and local causes. All you need to do is select Friends of Pangbourne Primary as your local community cause at <https://membership.coop.co.uk/causes/57300>

#### 2. Amazon – Shop to Support your Local Charity

Help to raise funds for FOPPS when you shop with Amazon.



AmazonSmile is a simple and automatic way for you to support a charity of your choice every time you shop, at no cost to you. Next time you log on, navigate to [smile.amazon.co.uk](https://smile.amazon.co.uk) and choose to support Friends Of Pangbourne Primary School (FOPPS). When you shop at [smile.amazon.co.uk](https://smile.amazon.co.uk), you'll find the exact same price and products, with the added bonus that Amazon will donate a .05% of the net purchase price to FOPPS.



### 3. West Berkshire Lottery – Drive For Support!

West Berkshire Lottery is a weekly lottery that raises money for good causes in West Berkshire – and FOPPS is registered as one of the causes. West Berkshire Lottery also has grants available for any charity which buys more than ten tickets over a period of ten weeks, so please do get involved, because a potential win for you is also a win for FOPPS!



If you would like the chance of winning up to £25,000 AND supporting FOPPS, all you need to do is go to [www.westberkshirelottery.co.uk/support/fopps](http://www.westberkshirelottery.co.uk/support/fopps) and purchase a ticket.

### 4. Reduce! Reuse! Recycle for FOPPS!

We have a textile recycling bank just inside the school playground, so if you need to dispose of old clothes, shoes or other textiles please do drop your things into the collection bank at the Reading Road school entrance

In addition, if you are a parent or carer with children at the school, we offer a second-hand uniform service. We have a wide range of school uniform available at only £1 per item. To donate, please bring in clean uniform to add to our collection. To buy, just get in touch with school reception who will connect you with our volunteers and arrange for you to pick up what you need.

*If you would like more information, or would like to get involved, help or donate to your local primary school please contact us at [info@fopps.org.uk](mailto:info@fopps.org.uk).*

---

## ST ANDREW'S JOINS FORCES WITH BRADFIELD COLLEGE TO FORM THE BRADFIELD GROUP

St Andrew's School has formed a new and exciting partnership with Bradfield College, to form the Bradfield Group.

The merger brings combined strategic thinking and developments in teaching and learning for enhanced curriculum and professional development, access to outstanding shared facilities, and a broadening of opportunities and experiences for all its children. It will further strengthen both schools, as they look towards the future.

Head Master of St Andrew's Mr Ed Graham said, "Aside from shared strategic thinking and new initiatives, this exciting partnership means we can enhance our already-excellent facilities. Plans to evolve our technology, develop our boarding provision, offer wrap-around care for Nursery, and transform our Old Hall into a state-of-the-art creative and drama space are already underway. It's going to be a busy two years!"

The two schools have shared close ties since St Andrew's opened in 1934, just two miles from Bradfield (formally St Andrew's College, Bradfield). Both schools enjoy beautiful locations, extensive grounds, excellent facilities, and a proud heritage. They share reputations for educational excellence with a nurturing environment, characterised by family values and outstanding pastoral care.

St Andrew's will continue to feed a number of senior schools, while Bradfield will continue to welcome pupils from a wide range of feeder schools.

The next St Andrew's Open Morning is on Friday 4th March between 9.30 – 11.30am.

To reserve your place, book online:

<https://standrewspangbourne.co.uk/admissions-fees/open-days>.



**St Andrew's**  
PANGBOURNE





## PANGBOURNE COLLEGE

### PANGBOURNE COLLEGE WELCOME RETURN OF REMEMBRANCE SUNDAY PARADE

After a virtual service last year, we were thankful that this year's Remembrance Sunday took place in-person at the College and was supported by the entire College community. Former Chief Cadet Captain of the College (Head Boy), Major General Tom Copinger-Symes, was Guest of Honour. He was assisted by Squadron Leader Samuel Hodgkinson, whose team from RAF Benson provided a flypast during our parade ceremony.



The occasion started with a service inside the Falkland Islands Memorial Chapel during which the names of the 177 Old Pangbournians and one governor who were killed in World War 2 were read out by four Upper Sixth students. It was followed by the Act of Remembrance which took place outside, around the stage of our parade ground, led by The Reverend Neil Jeffers and SSI Mr Andrew Davison.

The parade inspection was one of six this year and is one of the unique aspects of Pangbourne: no pupil knows whether they will be the one spoken to by the visiting Guest of Honour, who in the past have included Prime Ministers and Royalty.



Five wreaths were laid at the front of the Chapel on behalf of the school governors, the College itself, the OP Society, the Pangbourne Parents' Association (PPA), and RAF Benson.

Unfortunately, due to continuing challenges of COVID-19, the parade through Pangbourne village was cancelled. Instead, our Brass Ensemble led the hymns and national anthem at the outdoor service of Remembrance at the church of St James the Less.

Remembrance Sunday 2021 was another example of both the value of our ceremonial traditions and 'Team Pangbourne' at its finest.

### DOUBLE SUCCESS FOR JOHNNY!

Johnny Pride, a pupil in Year 7 has been awarded a Citizenship Award by the UK Education Guide. The award recognises Johnny's fantastic efforts to raise over £10,000 for Parkinson's UK earlier this year, when he undertook the challenge of walking 81 miles from his home to Wembley to coincide with one of the England Euro games. He was inspired to raise money for the charity as his Grandfather had suffered with Parkinsons for 20 years before he died in the Summer of 2021. His impressive feat attracted significant radio and press coverage.

In addition to the award, Johnny has also been selected to play in the Gothia Cup Tournament, which is billed as 'one of the most prestigious football tournaments in the world'. Each year, around 1,700 teams from 80 nations take part, playing 4,500 matches on 110 pitches.

Johnny will be playing in Gothenburg next Summer, where he will receive top quality coaching and attend workshops run by the coaching staff and physiotherapists on issues such as nutrition and hydration, sports psychology and injury prevention.

Sam Hewick, Director of Sport at Pangbourne College says: "This is a superb achievement for Johnny who, through our Sports Performance Programme, is enjoying the opportunity to pursue his love of football at school.

His achievements both on and off the pitch are superb examples of our Flag Values; particularly those of Industry, Initiative, Resilience, Selflessness and Kindness. I'm sure he will have a bright future."



### OPEN MORNING – SATURDAY 19 MARCH

Our next Open Morning will take place on Saturday 19 March and is open to families who are seeking an independent senior education for their children. The event is an ideal opportunity to meet our staff, pupils and parents and to discover more about the Pangbourne community. To register, please visit: [www.pangbourne.com/visit](http://www.pangbourne.com/visit) or contact the Admissions team at [admissions@pangbourne.com](mailto:admissions@pangbourne.com).

## PANGBOURNE IN THE SECOND WORLD WAR

Nigel Suffield-Jones's excellent piece "Lest we forget" in the last issue of the magazine reminded me of a less well-known event involving Pangbourne during the Second World War. The most important military exercise of the war took place in southern and eastern England in March 1943. At that time plans were being laid for the invasion of Europe which required development of the means to provide close air support to the armies in the field.

Exercise Spartan, carried out between 4th and 12th March 1943, was to test the most effective ways in which the air force could be organised to protect and assist the expansion of the bridgehead of the advancing armies immediately following the invasion of northern France, and then to support the armies' advance across France, the Low Countries and Germany.

For the purposes of the exercise the First Canadian Army and the XII British Corps advanced northwards from Hampshire, crossing the River Thames between Reading and Oxford, building temporary bridges across the river in several locations, including Pangbourne. The air force role was to prepare imaginary airfields and move them across the exercise area in order to attack "enemy" troops and to support the advance of the "allied" army.

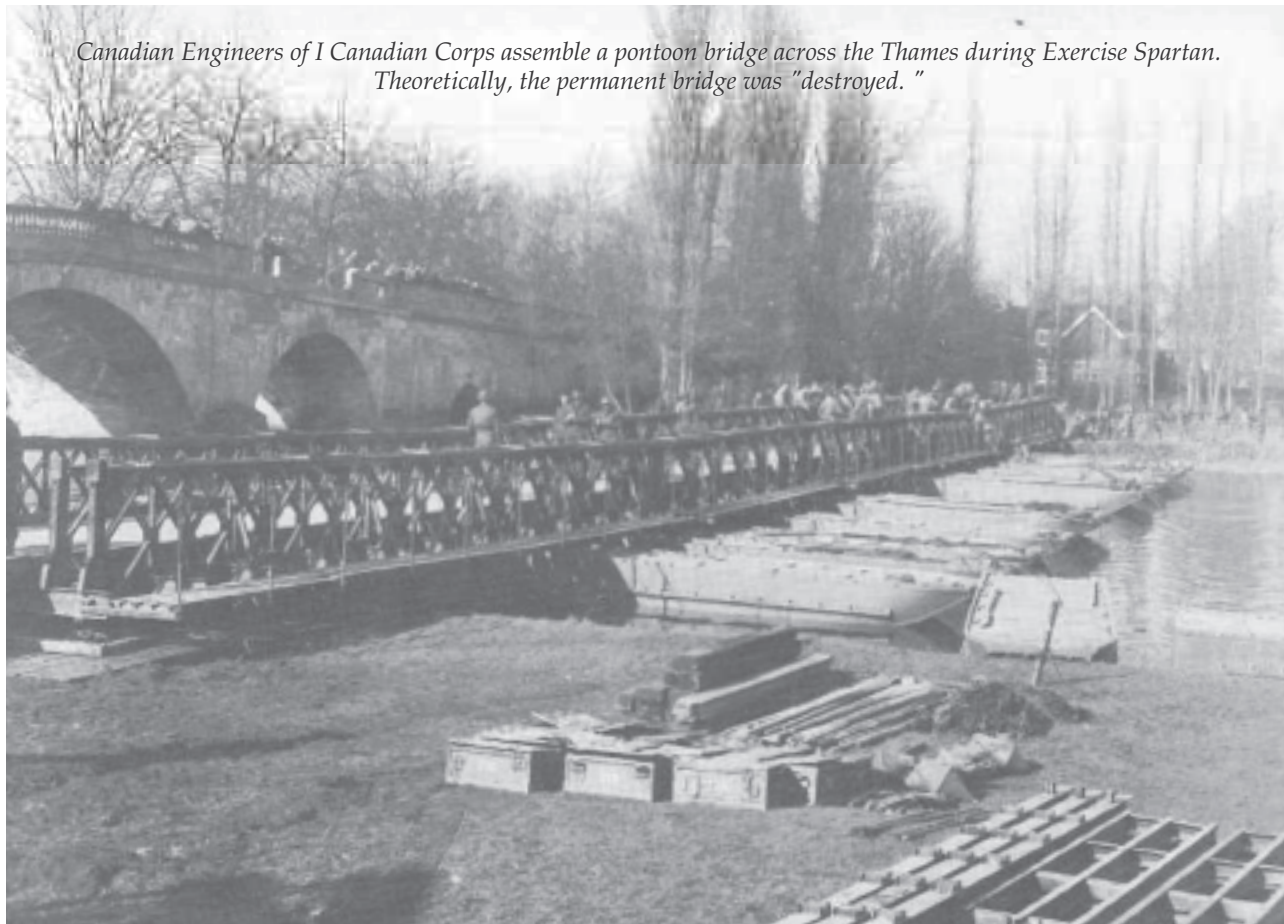
Among the allied air force was 464 Squadron (Royal Australian Air Force) flying Ventura light bombers. On the afternoon of 7th March twelve aircraft led by my father, Squadron Leader Peter Billyeald, attacked Goring on Thames, and later that afternoon the same twelve aircraft attacked Pangbourne from 6,000 ft. Despite poor visibility, both targets were deemed by the umpires to be successfully bombed and all aircraft returned to base without incident.

The entire exercise was successful, leading directly to the formation of the Second Tactical Air Force on 1st June 1943. 2nd TAF played a vital role in the invasion of France in June 1944 and the subsequent advance of the armies into Germany.

My father recalled the week spent on Exercise Spartan as a welcome break from operations and said he enjoyed having the opportunity to "bomb" targets without the risk of being attacked by enemy fighters or anti-aircraft fire. He was fortunate to survive fifty operational sorties flown in two tours of duty between July 1940 and May 1943. He was posted to Staff College in 1943 and then to the HQ of Second Tactical Air Force in January 1944. He went with HQ 2nd TAF into France in August 1944 and stayed with them through France and into Germany until the end of the war.

*Stephen Billyeald*

*Canadian Engineers of I Canadian Corps assemble a pontoon bridge across the Thames during Exercise Spartan. Theoretically, the permanent bridge was "destroyed."*





Offering quality tree care  
from a family run firm

40 years experience in  
planting, pruning and removal

Free estimates and advice

Contact Stewart Bee on

**0118 9595 222**

**07976 611128**

**beetreeservices@tiscali.co.uk**

*Seasoned firewood always available*

Unit 12,  
Manor Farm,  
Peppard Common,  
RG9 5LA



### **YOUR LOCAL GLASS AND GLAZING COMPANY**

- All types of glass cut to size
- Mirrors, shelves and table tops
- Greenhouse glass and picture glass
- Full glazing service, trade and domestic
- Broken windows and shopfront glass replaced
  - Traditional leadlights repaired
  - Broken and misted double glazed sealed units replaced
- UPVC, aluminium and hardwood windows, doors and conservatories
  - Delivery service

**CALL FOR ADVICE AND FREE QUOTATION**

**01491 629901**



15 years guarantee  
on all high performance felts  
also

Tiling and Lead Repairs

Phone Bradfield

**0118 9744701 or**

**07880 930 958**

Email: **eddylaming@hotmail.co.uk**

*38 years experience*



### **NEIL HOULDEY** *Quality Painting and Decorating*

- All types of interior and exterior work completed
- Advanced City & Guilds qualified
- General maintenance and repairs undertaken
- Gold CSCS card accreditation
  - 30 years experience
  - Fully insured
- Pangbourne and surrounding areas

**07731 476100 • 0118 9845532**

**neil.houldey@yahoo.com**

**www.neilhouldeyqualitypaintinganddecorating.com**

## CHARTERED FINANCIAL PLANNERS BASED IN BERKSHIRE

### We can help you achieve your long-term financial goals.

We understand that clients expect us to provide access to leading-edge investment, pension and insurance solutions. What is different, is our approach and the additional ways that our clients tell us we add value to them:

- A thorough audit of your financial affairs is prepared to establish a clear picture of your current position
- Your Chartered Financial Planner will help you establish and prioritise your objectives and long-term goals
- Your existing provisions are considered and analysed before suggesting new arrangements
- We care about the details, providing you with peace of mind
- Our Client Managers complete your team, ensuring your administration is managed efficiently

[www.essential-wealth.co.uk](http://www.essential-wealth.co.uk)

01488 669840



[enquiries@essential-wealth.co.uk](mailto:enquiries@essential-wealth.co.uk)

1-2 Great Farm Barns, West Woodhay, Newbury, Berkshire RG20 0BP

Essential Wealth Management and Advice Ltd is an appointed representative of The Openwork Partnership, a trading style of Openwork Limited which is authorised and regulated by the Financial Conduct Authority.



# STANROD MOTORS 2

**is happy to collect and deliver your car  
for all your MOT and servicing needs**

**Call Steve or Sean  
at STANROD MOTORS 2  
today on 0118 976 7686**

Open 8am-6pm Mon-Fri • 8am-Noon Sat  
14 Station Road, Pangbourne, Reading RG8 7AN  
email: [info@stanrodmotors2.com](mailto:info@stanrodmotors2.com)



## ONE HUNDRED YEARS OF FREEMASONRY IN PANGBOURNE

FREEMASONRY is one of the oldest social and charitable organisations in the world. Its roots lie in the traditions of the medieval stonemasons who built our cathedrals, temples and churches.

Organised freemasonry is over three hundred years old and began when, on 24th June 1717, Freemasons from four London Lodges met to form the world's first Grand Lodge, The United Grand Lodge of England (UGLE) which is the governing body for freemasonry in England and Wales and is headquartered in Freemasons' Hall, Great Queen Street, London.



*Allan Banyard*

The realms of Freemasonry in Pangbourne started 100 years ago, in the early 1900s, when a Commercial Traveller, Mr. Allan Ambrose Banyard, came with his family to live in Pangbourne. Being a keen Freemason, he soon realised that there were no Masonic Lodges in the immediate area between Reading, Newbury and Wallingford. He therefore conceived the idea of a Freemasons Lodge being formed in Pangbourne. He set about and contacted various local Freemasons to form a nuclei of possible founder members; then went further afield and obtained the assistance of other interested Freemasons, including that of The Rev. Arthur Edwin Brisco Owen MA FRAS, – a very well-respected Freemason indeed.



*WBro Rev Arthur  
Edwin Brisco Owen*

With the support of some 28 petitioners and the sponsorship of The Reading Lodge of Union, together with the recommendation of the Provincial Grand Master for Berkshire, John Thornhill Morland, MA, a Charter was granted by the United Grand Lodge of England on the 6th December 1921. The Lodge was Consecrated on the 4th February 1922 at the New Hall, Pangbourne, the Ceremony was performed by John Thornhill Morland, MA, the Provincial Grand Master for Berkshire along with a deputation of his Provincial and Grand Officers.

The first Master of Pangbourne Lodge was Rev. Arthur Edwin Brisco Owen and its Secretary, Allan Banyard. Meetings of the Lodge were at first held at a number of venues in and around Pangbourne, principally at the Elephant Hotel. Such was its popularity, the membership increased steadily to such an extent that it was proving difficult to provide comfortable accommodation for the members, and furthermore, as the Ceremonies could not be performed efficiently, the Committee decided to start a fund to purchase premises suitable to meet their current needs and to provide for the future.

The Secretary, Bro. Allan Banyard, wanted the fund to grow quickly in order to have a Masonic home of their own. He came up with a novel fund-raising scheme asking the members to save all their tin-foil from cigarette packets, or in whatever form they could get this valuable metal, and to ask all their friends to save theirs for them as well. By great good fortune, Shooters Hill House came onto the market in early 1928; it was a large property having been designed and built in 1895 by well-respected architect, Leonard Stokes, in a free neo-Georgian style and extended over the intervening years.

Shooters Hill House was situated on the Reading to Oxford Road in Pangbourne close to and overlooking one of the loveliest reaches of the River Thames and was, at the time, the home of Mr. Dan Harries Evans, the founder of the famous department store, D. H. Evans in Oxford Street, London, now re-named the House of Fraser.



In 1928 the Lodge made a decision to purchase the eastern section for the sum of £1,100 and this was completed in September of that year. This portion of the property purchased by the Lodge was an adjunct to the original building, having been added in 1898. The original entrance was through an ornate porch way over which is carved, in solid stone, the Coat of Arms of the Evans family with the inscription in Welsh, 'Goreu arv Gwirionedd' which, literally translated, means, 'The greatest weapon is truth'. A certain amount of modification to the building was necessary to enable it to fulfil its new role as a Masonic Temple. This was tastefully and sympathetically carried out by one of the Lodge's Founders, Bro. John Smallbone.

In June 1926, the Reading Standard reported on a Masonic Church Service at Pangbourne Parish Church, the first to be held in Pangbourne, which was inaugurated in support of the Samaritans Fund of the Freemasons Hospital and Nursing Home and was held under the auspices of the Pangbourne Lodge. Prior to the service, a luncheon, at the invitation of Bro. Allan Banyard, was held in the Constitutional Hall after which the assembling of the procession took place under the direction of George Holden, the Provincial Grand Director of Ceremonies and comprised of nearly 400 Freemasons in full regalia representing Lodges in Berkshire, Buckinghamshire, Oxfordshire, London, Essex and Suffolk. Such a display obviously caused a high amount of local interest in the proceedings augmented by large numbers of residents from Reading and surrounding districts who came to view the goings on. It was hoped that when final contributions had been received, the amount would ultimately reach around £100. On their return from the Church, between six and seven hundred brethren and their friends were entertained to tea and light refreshments by the wives and daughters of the Pangbourne Lodge members.

The Temple was Dedicated on the 6th October 1928, by the Right Worshipful Bro. His Royal Highness, Prince Arthur of Connaught, KG, at that time the Provincial Grand Master for Berkshire, assisted by the Very Worshipful Bro. The

Rev. Canon F.J.C. Gillmor, MA, TD, Deputy Provincial Grand Master of Berkshire and the Officers of Provincial Grand Lodge with great ceremony.

Following the Dedication Ceremony, the Brethren adjourned to the Constitutional Hall where a splendid banquet was admirably served by C. G. Parslow, of Messrs. G. G. Parslow and Sons, of Reading. The hall, it was reported, was prettily and tastefully decorated in pale pink and blue draperies by Messrs. Heelas (Reading).

With some of the Lodge Members holding key positions with the Great Western Railway, it was interesting to see, stated on the Dedication Summons, that Officers and Brethren returning to London after Lodge will note that, by the kindness of the Superintendent of the Great Western Railway, the express trains from Weston-Super-Mare and Birkenhead will be especially stopped at Pangbourne for the convenience of those Brethren returning to Reading and London.

In 1928 the Reading Standard reported that a Masonic Ceremony of unusual interest was witnessed at Pangbourne on 7th January when a candidate who had never been able to walk or stand was initiated into the Craft. It was the initiation of Mr. Cyril Langford Banyard who was paralysed in his lower limbs from birth and the Ceremony being performed in the presence of his father, Bro. Allan Banyard, the Secretary of the Lodge. A large contingent of Officers from the United Grand Lodge of England, the Provincial Grand Lodge of Berkshire and from London and different parts of the country all travelled to do honour to Bro. Banyard and his son.

The ceremony, which was conducted by W.Bro. Albert Maker, was most impressive and it was evident to see that all the Brethren present were deeply affected by the proceedings. The initiate, a tall, bright-looking young man, not being able to use his crutches, was borne into the Lodge on the stalwart shoulders of the Senior and Junior Deacons, Bros. Leonard Geer and Edward Roberts, whose difficult task was carried out with the utmost delicacy. Young Cyril, it was reported, made an excellent speech in response to a toast to his health at the Festive Board which followed.

There are many features which make Pangbourne Lodge different from the general run of Lodges. For instance, it is a custom of the Lodge that every Worshipful Master shall have his photograph taken, in his regalia, framed and hung above the mahogany panelling, commencing at the south-east corner of the Lodge.

In Freemasonry and in public life, Pangbourne Lodge can boast a good proportion of its Members who have attained distinctions in many ways.

Charles Edward Keyser purchased the estate of Aldermaston Court and by this purchase he became Lord of the Manor of Aldermaston and Patron of the Living. He was, at various times, Deputy Lieutenant and High Sheriff of Berkshire. He was the benefactor of numerous projects in the village, including the renovation of the church, the establishment of a water supply and drainage system, and the building of the Parish Hall.

William Henry Bale, CBE, JP appointed Assistant Provincial Grand Master of Berkshire, he became an Alderman of the Council of the County Borough of Reading and eventually became Mayor of Reading in 1936, an office which he filled with distinction and dignity.

Albert James Maker, OBE, another of the Lodge Founders, also served on the Reading Council as Alderman and was the longest serving member, celebrating 60 years on the Council in 1966. He and W.Bro. William Bale were both made Freemen of the Borough of Reading in recognition of their public service. W.Bro. Maker was affectionately known as 'The Father of the Reading Council'.

Sir Archibald Young Gipps Campbell was an Indian Civil Servant serving as the Law member of the Executive Council of the Governor of Madras from 1926 to 1928 and Chief Secretary of Madras 1925-1935 and made an important contribution towards the founding of Red Cross Food Parcels in World War I. In 1926, he and his wife, Irene, bought Flowers Court in Pangbourne. It acted as the family home for the next 26 years.

Sir Robert Anthony Bevis Durant, MP, was Initiated at Pangbourne Lodge in December 1983. He was the Member of Parliament for Reading North from 1974-83 and after Reading's constituency changes, he was the Member of Parliament for Reading West from 1983-97.

In 1971 he supported Margaret Thatcher's decision to end free school milk on the grounds that many children did not like it. He also campaigned for safety measures on the M4 where he had the central reservation barriers raised after a van flipped over them killing 13 people; also campaigning on local canals pressing for life-belts, and at the Aldermaston nuclear facility, asking awkward questions after a leak of tritium in 1991.

Sir Tony's desire to help did not always bring the response he expected. When, in 1985, he called on a woman who had complained about the living conditions in her bedsit, she emptied a bag of flour over his head. He diligently took up her case – and did not press charges!

The members of Pangbourne Lodge are looking forward immensely to the celebrations of its 100 years of Freemasonry in Pangbourne, in February 2022. The Centenary Meeting will be attended by the Deputy Provincial Grand Master for Berkshire, the Very Worshipful Brother, Peter Sands, and a wealth of dignitaries and visitors from across Berkshire. The Centenary dinner afterwards will be sure to bring a bit a Déjà Vu as the Lodge will be returning to Pangbourne Village Hall, not too far from where it all started one hundred years ago.



*Pangbourne Masonic Temple*

**ICN BUILDERS**  
**BUILDING, CARPENTRY AND HOME IMPROVEMENT SPECIALISTS**  
**ALL WORK GUARANTEED**  
 OVER 15 YEARS EXPERIENCE

- EXTENSIONS
- ALTERATIONS
- RENOVATIONS
- EXTERNAL DECOR
- CONVERSIONS
- KITCHENS/BATHROOMS
- PATIOS/DRIVES
- LISTED BUILDING WORKS

**ALL ASPECTS OF BUILDING WORK UNDERTAKEN**  
**FULLY INSURED • REFERENCES AVAILABLE**

**0118 9845959 0791 7095379**

**DRAIN & ABLE**  
 Independent Drainage Service  
**24/7 EMERGENCY SERVICE**  
**GUARANTEED ARRIVAL**  
**ALL TELEPHONE CALLS ANSWERED PERSONALLY**  
 Call anytime on 0118 957 6244/  
 07795 598207  
**www.drainandable.co.uk**

**HIGHLY RECOMMENDED**

**ATB Accounting**  
 Old Breedon School, 8-10 Reading Road,  
 Pangbourne RG8 7LY  
**0118 405 6000**

**Services include:**

Bookkeeping ..... from £18 p/h  
 Ltd Co. Accounts ..... from £700 p/a  
 VAT Returns ..... from £100 p/a  
 Self Assessments ..... from £70 p/a

(ALL PRICES EXCLUDING VAT)

**For a free quotation:**  
 Call us on **0118 405 6000**,  
 or call in – no appointment necessary,  
 or email: **charles@atbaccounting.co.uk**

**CIG.**

Chiltern Insurance Group  
 Pangbourne

Business and Personal Insurance  
 from your Local Broker

**Call 0118 984 3355**

[www.chilterninsurance.co.uk](http://www.chilterninsurance.co.uk)

St James House, Church Road,  
 Pangbourne, RG8 7AR

Chiltern Insurance Consultants Ltd are authorised and regulated by the Financial Conduct Authority for General Insurance Business.

**LOCKSMITH** **ACG SERVICES**

Locks changed, fitted, repaired & opened.  
 Yale locks, five lever mortice locks, digital locks,  
 UPVC door locks & handles, UPVC window locks.

**Emergency callout service**

Over thirty years of experience. Free quotations  
 Tel: **01491 682050** or **07710 409216**  
**www.acgservices.co.uk**

Office: 3 Wayside Green, Woodcote, Oxon RG8 0PR. Proprietor Richard Homden

**DO YOU NEED A WILL OR LASTING POWER OF ATTORNEY?**

If so contact **Chris Lawn**, a solicitor working locally,  
 on **07843 679 239** or email **chris@jonathanlea.net**

Chris will visit you at your home.  
 Appointments last approximately 1 hour and  
 can be held during the day, evening or weekend.

*Hillhampton Wills is now incorporated into  
 Jonathan Lea Network Solicitors.*

For further information visit **www.chrislawn.com**

A MEMBER OF THE INSTITUTE OF PROFESSIONAL WILLWRITERS AND FULLY INSURED

Woodborough  
HOUSE

DENTAL PRACTICE

## Your smile plays a bigger role in your life than you might think

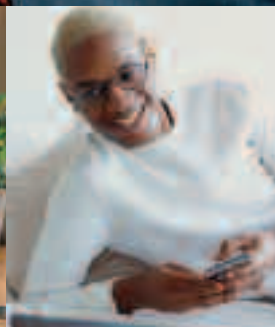
If you're unhappy with your teeth our award-winning team of dental specialists will help. We're proud to have treated many patients in Reading, Berkshire and the surrounding areas with life-changing cosmetic dentistry.

**So why not start your year with a plan to restore or refresh your smile.**

CONTACT US TODAY

T: 0118 984 3108 E: [INFO@WOODBOROUGHHOUSE.COM](mailto:INFO@WOODBOROUGHHOUSE.COM)  
[WWW.WOODBOROUGHHOUSE.COM](http://WWW.WOODBOROUGHHOUSE.COM)

changing  
lives  
through smiles



# neville & turner

Village & Country Property Agents

## *Are you considering selling or letting your home?*

*Our bespoke and unique service also offers a reputable in-house removals facility (locally or nationally) and can be included within our selling fees.*

*Find out why so many local people have recently sold via Neville Turner by contacting our office in Pangbourne on 0118 984 1841*

*[barbaralegg@neville-turner.co.uk](mailto:barbaralegg@neville-turner.co.uk)*

[www.neville-turner.co.uk](http://www.neville-turner.co.uk)

# PANGBOURNE PLACE-NAMES

---

## BIRDS

Our island was invaded often in its early history, by Celts, Romans, Anglo-Saxons, Vikings and Normans, with each leaving its mark on our modern maps. A major fascination in the study of modern English place-names is understanding and interpreting the names in the different languages left by these invaders.

A case in point is nearby **Purley**, with our **Purley Way** recalling that the land there was originally part of Purley parish. The Anglo-Saxon word *pur* is no longer in use in modern English, surviving only in *purre*, a rarely used name for the dunlin, a seashore wader and clearly not applicable in the middle of Berkshire. The problem over the interpretation of the name Purley arises because an early medieval document in Latin, the universal language of learning at the time, has an insertion, called a 'gloss', translating *pur* as both 'snipe' and 'bittern'. However, an ornithologist will tell you that they are definitely two entirely different species, even if they do both tend to inhabit marshy areas.

The bittern is solitary and reclusive, but its name has interesting associations. The bird makes a booming sound, audible at over a mile, and this led the Roman writer Pliny in his 'Natural History' of AD 77 to add the word *taurus* ('ox'), the -ter- element of the modern word, to the original Latin *butio*, making the bittern 'the bird that bellows like an ox'. The French and German names for this bird retain the same idea.

The snipe too is secretive, but it has a hoarse rasping cry when flushed. It is a medium-sized wading bird with a long straight bill whose camouflage colouring enables it to remain undetected by hunters in marshland. When it flies, it has an erratic flight pattern such that it is hard to shoot, and the general difficulties involved in successfully hunting snipe have given rise to the military term 'sniper'. It is thought to have originated with soldiers in the British Army in India around 1770, one of their favourite pastimes being shooting at snipe.

At **Purley**, where the habitat by the Thames, especially before it was canalised, is suitable for both species, we can only say that the name means 'wood or clearing (-ley) frequented by the bittern or snipe'. Likewise, **Purfurlong**, a field-name at Rotherfield Greys, could refer to either bird, but there was no doubt about the 'open land (-feld)' at **Bitternefeld**, Eye and Dunsden, mentioned in an early 17th century document, or the 19th century reference to **Snipe Piece** at Thatcham or **Snipe Bottom** ('valley') at Hampstead Norreys.

A bird of similar appearance to the snipe is the woodcock, as at **Woodcock Gully**, Beenham, **Woodcock Hill**, Aldermaston, and **Woodcocksacre**, a lost field-name in Tilehurst recorded in the 17th century. This wading bird has taken to the land, especially woodland that has been opened up by clearings and rides. It nests in Scandinavia and Russia as far away as east of Moscow, reaching our area each year in November, although in some parts of Britain the bird is resident throughout the year. It has given rise to apparently curious names like **Cockshut**, Chieveley, and **Cockshoot Corner**, Aston Rowant. These refer, not to shooting as such, but to a woodland glade (*sceat*) where nets were stretched to catch these birds, and the same idea may be behind **Cox Setters**, Hurley. The bird is also the base of the *cocker spaniel*, since the dog was originally bred to flush woodcock.

**Ouzel Gully**, Midgham, *Owsells in Migeam* in 1547, shows the problem of a change of designation with the passage of time. For ornithologists, a male ring ouzel has dull black plumage with a broad white crescent across the breast, but in Anglo-Saxon an *osle* was the entirely black bird that we recognise in **Blackbirds Pigtle** ('small enclosure'), Tilehurst. The modern name for the bird was first recorded in 1450.

Of Old Northern French origin is the bird name *pinchon*, behind **Pincent's Farm**, Tilehurst. Meaning 'finch', it is more easily recognised in **Finchampstead**, and the same bird was associated with **Pinmarsh Farm**, Lockinge. As a family name pinchon must originally have been applied in England as a nickname to a forebear of *Robert Pincent*, a Norman who was a tenant of the monks at Reading Abbey, and is mentioned in a charter in the 12th century. The bird was considered a symbol of gaiety, and the nickname was given to someone who perhaps had the reputation of being the life and soul of the party. Robert's descendants acquired the lands in Tilehurst in 1316.



Dunlin.



Bittern.

# PANGBOURNE PLACE-NAMES

Rooks are gregarious birds, and their habit of nesting together is at the back of names like **Rookery Copse**, Beenham. The collective noun for rooks is a 'parliament', with reference to rooks gathering in a huge circle around one or two individuals who must have committed a very serious avian misdemeanour. Various historic references suggest that a fight between the birds in the middle sometimes breaks out or that the birds in the middle are attacked by those from the edge. I wonder whether someone in medieval England observed such behaviour on the marshy waste-land (*mor*) at **Rookmoor**, Ufton Nervet, *Rockmore* in the 16th century.

In Celtic mythology the rook, often interchangeable with the raven, has strong associations with death and war. With their dark plumage, unnerving calls and tendency to eat carrion, plenty of which is available in the aftermath of battle, both birds, as well as the crow, had a sinister reputation. Being solitary by nature, crows in particular were seen as harbingers of death, and the solitary tree at the junction of the Bracknell and Wokingham roads marked on Norden's map of 1607 at what is now **Crowthorne** must have caused terror indeed. Crows and rooks are difficult to tell apart, and it is said that if you see a group of crows, they must in fact be rooks, and if a single rook, it must be a crow.

It is not too difficult to imagine in chess an association between a rook as the alternative name for a castle and the bird, but the connection is more apparent than real. The name of the chess piece is ultimately from Arabic *rukh*, its original meaning being uncertain. Chess originated in northern India in the 6th century AD and spread to Persia. When the Arabs conquered Persia, chess was taken up by the Muslim world and subsequently, through the Moorish conquest of Spain, spread to Southern Europe, and from there to our shores.

A personal name *Croc* from Old Norse, the language of the Vikings, is behind **Crowsley Park**, Shiplake. At some time between 1066 and 1415 a forebear was seen as having a crook-shaped back, or perhaps could not shake off the reputation for being sly or cunning – veering on a 'crook' in our modern sense.

Sometimes a name has only a more distant connection to what seems a straightforward association, as at **Swallowfield**. This has only a very tenuous link with a bird gliding across farmland, being the 'open land (*feld*) by the river *Swalewe*', an earlier name for the **River Blackwater**. The union of the rivers Blackwater and Whitewater was seen as producing the same rushing of the water as swallows in the air.

Place-names are regularly not what they appear. **Cuckoo Weir**, Eton, has nothing to do with the harbinger of spring, being a weir above an inlet as a harbour for a 'cucow', a sailing boat for fishing. On the other hand, **Cuckoo Copse**, Lambourn, means what it appears to. **Ramsbury Corner**, Bucklebury, like its better known namesake in Wiltshire, does not involve sheep, being a 'fort (-bury) associated with a raven (*hraefn*)'. **Pyestock**, Hawley, is not in any way connected to the "Four and twenty blackbirds Baked in a pie" of 'Sing a Song of Sixpence', being probably a 'tree stump (-stock) on which a magpie (Pye-) perched'. **Hen Wood**, Wootton, has nothing to do with poultry, the wood originally being in the possession of a 'monastic community' (*hiwan*), notably Abingdon Abbey.

Fascinating but perverse things, place-names.

Nigel Suffield-Jones



*Snipe.*



*Woodcock.*



*A parliament of rooks.*

If you would like to know about the possible meaning(s) of your Family name and/or First name, contact me at [nsjnames@gmail.com](mailto:nsjnames@gmail.com).



"Lafford & Leavey, experts in  
bringing the outside - inside"

## Windows - Doors - Conservatories UPVC or Timber

One of the leading window, door and conservatory installers in Berkshire, offering free quotations and advice from a company with a formidable reputation spanning 50 years. Choose from a wide range of products in a style and finish which will suit your budget and needs, we are only a phone call away.



## LAFFORD & LEAVEY LTD

ARROWHEAD ROAD, THEALE, READING, RG7 4AZ

Tel: Reading (0118) 9303333 Fax: (0118) 9323707

Email: [info@laffordandleavey.co.uk](mailto:info@laffordandleavey.co.uk)



## SPB STONEWORKS LTD



Tel: 01189371827 or 07971881504

Visit us @ [www.spbstoneworks.co.uk](http://www.spbstoneworks.co.uk)

Email: [simonbeale@spbstoneworks.co.uk](mailto:simonbeale@spbstoneworks.co.uk) or [admin@spbstoneworks.co.uk](mailto:admin@spbstoneworks.co.uk)

Special offers on all types on memorials from Headstone, Full memorials, Cremation stones, Childrens memorials & Vases  
FREE NO OBLIGATION QUOTES and FREE FULL COLOUR BROCHURE ON REQUEST



- MONUMENTAL STONE MASONS.
- SUPPLYING ALL TYPES OF MEMORIALS & HEADSTONES
- 30 YEAR GUARANTEE ON ALL NEW & REPAIR WORK
  - MEMBERS OF BRAMM, NAMM, AND THE GUILD OF MASTER CRAFTSMEN
- RENOVATIONS & CLEANING OF EXISTING MEMORIALS
  - ADDITIONAL INSCRIPTIONS ALL STYLES
  - REPAIRS & RE-LEVELLING
- FAST & FRIENDLY FAMILY RUN COMPANY



**Up to 70% Cheaper than Funeral directors  
with 100% Guarantee to beat any memorial quote**

Showroom by appointment

Unit 3 Old Mill Trading Estate, 61 Reading Road, Pangbourne RG8 7HY



EST 2001



### COUNTRY ROOFING — SUPPLIES —

*All you need under one roof*

Visit us at  
Timbers Farm, Henley-on-Thames RG9 5SY

Call us on 01491 641024

[www.countryroofingsupplies.co.uk](http://www.countryroofingsupplies.co.uk)

### Duncan Agar Painter and Decorator

- Highly Experienced, Professional Tradesman
- All Aspects of Interior and Exterior Decorating
  - Traditional and Modern Finishes
  - Period Properties a Speciality
  - Free Quotations and Advice
  - References Available

**Tel: 0118 971 2340  
& 07787 552 983**

## PERSONAL TAX RETURNS

Contact Geoffrey Cole

**Geoffrey Cole & Co**

*Chartered Accountants & Registered Auditors*

**4 Reading Road Pangbourne Berkshire RG8 7LY**

**Telephone 0118 984 1556 Email [post@geoffreycollection.co.uk](mailto:post@geoffreycollection.co.uk)**

**[www.geoffreycollection.co.uk](http://www.geoffreycollection.co.uk)**

## PANGBOURNE AND WHITCHURCH SUSTAINABILITY NEWS



What a busy couple of months!

The TreeFest event in October sponsored the planting of 33 trees on the Thames meadows. The community art project depicting the tree of life and bringing attention to COP26 was completed and attached to the wall in the middle of the village and in November PAWS joined in the Worldwide Day of Action for Climate Justice outside Garlands. We also had a full village hall listening to film producer Gareth Unwin-Ellis describing how sustainable practise is integral to the production of his new film CHEETAH The Movie. (See separate article in this magazine)

At the Day of Action we raised a petition to the United Kingdom Government asking that the UK immediately say 'No' to new coal mines and 'No' to new oilfield exploration. This was sent to our MPs, Alok Sharma and John Howell along with messages written by members of the public and posted on our smaller PAWs tree. A vigil for countries already suffering the effects of climate change was held.

### SO WHAT DO WE THINK ABOUT COP26? SUCCESS OR FAILURE?

To the obvious dismay of Alok Sharma, President of COP 26, the negotiated deal was watered down at the last moment by India and China insisting on replacing a pledge to 'phase out' coal with the words 'phase down its use'.

Nevertheless, nearly 200 nations pledged to accelerate their decarbonisation plans, although it must be remembered that these pledges fall short of the Paris 2015 Accords which required a limiting of global warming to 1.5°C above pre-industrial levels. Temperatures have already risen by 1.1°C.

One positive outcome is the agreement of all countries to return to the negotiating table next year with a view

to improving the deal. This keeps the issue alive and opens the door to accountability.

The general view of environment commentators is that overall COP 26 was a success in that it produced:-

- Commitments to curb methane emissions and deforestation
- Commitments to decarbonisation programmes
- Commitments to net-zero targets of 90% of the global economy
- First UN climate agreement to mention the need to end world reliance on coal
- Approved rules to create a framework for a global carbon market
- Requirement for all countries to revisit their commitments in a year's time

The difficulties of course lie in the fact that to keep the target of 1.5°C we need to react immediately to produce a steep reduction in the use of fossil fuels and this change demands profound ideological and economic changes. This cannot be solely led by governments.

It depends on us to use our democratic power to demand changes which are difficult. We need to pay to clean up our environment in order to have something to offer generations to come. This requires us to make what initially will seem as sacrifices, but will in the long run enable us to live in a cleaner, less polluted, more rewarding environment and may reduce the endless stress of achieving more and more.

### WHAT STOPS US MAKING CHANGES?

Everyone knows that change is difficult, we become attached to what we know and that prevents us from living life fully. The theory of the THREE C's is relevant in this situation.

The theory states that we can improve our resilience to stress by exploring our attitude to the world. Someone



who survives stress well is said to have a 'hardy personality'. Their behaviour is characterised by the THREE C's.

- **COMMITMENT.** They express an interest in the outside world, care about world events, have committed beliefs and involve themselves in the outside world.
- **CONTROL.** They believe that what they say and do will actually influence people and events around them.
- **CHANGE.** They accept change is inevitable and are welcoming of it, recognising that all change has the potential for growth and development and brings with it deepening wisdom.

Our modern world presents us all with immense stress, but the more we personally do something about climate change the more we feel in control. If everyone continues to lobby Parliament, refuses to invest in fossil fuel industries and consumes less plastic-based items we can change the direction of huge corporations that make money out of producing non-sustainable goods and services. Already the signs are there that the financial sector is more and more moving towards green investment. Recently Rivian, a US start-up that manufactures electric trucks, floated on the New York Stock Exchange for \$91 billion, valuing it more than Ford and General Motors!! It seems that economic

transformation is making a rapid difference already. As public awareness and concern about climate change grows and people make greener consumer choices, business leaders and politicians will follow and the chances of lasting commitment to keep the temperature to the 1.5°C can happen. As Will Hutton in the Observer comments: 'What is vital is not so much COP26, but, rather, the process, movement and social change it represents. Humanity has to save itself. It will be messy and imperfect – but we'll get there'.

We are all part of this process, we can all be part of its direction if we keep the pressure up on politicians and corporations and vote with our feet.

Finally, some of the heartfelt messages sent from people in our communities to our MPs:

*'Dear Mr Sharma, I am 14 years old. It is my future, and your mistake and responsibility. It has been a crisis for a while, so before catastrophe, please start changing.'*

*'The planet depends upon our choices. Don't kill the world. Please try to help our planet.'*

*'We want action. Listen to the people, not to money.'*

*'Less talking about the action. More doing the action! Change needs to happen now!'*

*'We all have to live sustainably, together.'*

Heather Thorne

## 2021/22 PAWS CALENDAR

WHEN	WHAT	WHERE
Thursday 13 January 2022 8pm – 10pm	PAWS 2022 Planning Meeting	Pangbourne Village Hall

Visit our website [www.pawsg.com](http://www.pawsg.com)

and join our Facebook group: PAWS (Pangbourne & Whitchurch Sustainability)

## THE MAKING OF CHEETAH THE MOVIE.

### OSCAR-WINNING FILM PRODUCER TREATS PANGBOURNE TO A BEHIND-THE-SCENES LOOK AT THE INDUSTRY'S PROGRESS TOWARDS SUSTAINABILITY

During November Pangbourne & Whitchurch Sustainability group were treated to a fascinating talk illustrated with film clips by Gareth Ellis-Unwin, about *The Making of CHEETAH the Movie*, and how the film and television industry is going to great lengths to become more sustainable, reduce its carbon footprint and to become less wasteful.

Gareth asked the audience if we had ever noticed, at the end of films and TV programmes, in the credits a 'barefoot' logo:

He explained that Albert is an environmental organisation aiming to encourage the TV and film production industry to reduce waste and its carbon footprint.



Only films and programmes that survive the rigorous Albert Audit get awarded the Albert Logo. It means that every step of the way during filming, the team has to think how their actions impinge on the planet. *CHEETAH The Movie* aims to comply with Albert's standards. Gareth gave as an example, the work done on the film *Dunkirk*, in which trenches were dug, and then the earth and plants had to be meticulously put back, and sound effects and explosions done that did as little actual damage as possible. Notoriously wasteful catering on film sets has changed for the better: now everyone has to have re-usable cups, and bacon sandwiches are not the only option: vegan and vegetarian meals are also available. Vehicles are powered with bio-fuel or solar panels, and filming schedules are designed to make use of natural light.

# mb mortimer burnett

Chartered Accountants & Business Consultants

**Are you looking for a new Accountant?**

*Specialising in:*

- Cloud Accounting
- New Business Start-ups
- Bookkeeping
- Business Planning
- Tax Services
- Management Accounts
- Payroll / CIS
- VAT

*We can help your  
business grow and reduce costs*

Xero • QuickBooks • Sage

**CONTACT US FOR A FREE CONSULTATION**

**01491 874332**

admin@mortimerburnett.co.uk

www.mortimerburnett.co.uk

The White House, Mill Road, Goring on Thames RG8 9DD



**GARLANDS**  
organic & natural



**Garlands for high quality food and much more.**

Seeds, nuts and grains | Sustainably caught fish |  
Organic fruit and veg | Artisan bread | Dairy &  
Non-dairy chilled foods | Speciality and "Free from"  
foods | COOK remarkable food for your freezer | Local  
beer | Organic wines | Health supplements | Natural  
Cosmetics | Eco-friendly household products |  
BOODY bamboo clothing | Candles |  
Essential Oils | Loyalty scheme

6 Reading Road, Pangbourne, RG8 7LY  
0118 9844770 orders@garlandsorganic.co.uk  
garlandsorganic.co.uk

## ***Cleaver Cars Ltd***

Independent Citroën Specialist



Servicing, repairs and MOTs  
All makes and models



Free local collection  
and delivery service



**Tel. 0118 957 6405**

67 Loverock Road  
Reading, RG30 1DZ

Email: cleavercars@btconnect.com

www.cleavercars-reading.co.uk

A . B .

# WALKER

THE FUNERAL PEOPLE

**A FAMILY BUSINESS SINCE 1826**

THATCHAM – 01635 873672

TILEHURST – 0118 304 0068

READING – 0118 957 3650

ALSO AT BRACKNELL, CAVERSHAM,  
HENLEY, MAIDENHEAD, WOKINGHAM.

TRADITIONAL AND CONTEMPORARY  
FUNERAL SERVICE AND DIRECT CREMATION

FLORAL DESIGN AND MONUMENTAL MASONRY

PRE-PAID FUNERALS, LATER LIFE LEGAL SERVICES

BEREAVEMENT CARE



WWW.ABWALKER.CO.UK



**Golden Charter**  
Funeral Plans



*CHEETAH The Movie* is a film about conservation, and shows the conflicts between poachers, farmers and the modern world. It started out as play, written by Ric Edelman, a conservationist, who went as an eco- tourist to Iran. He was so inspired and impressed by the Iranian villagers and conservationists he met, who were trying to save this emblematic animal, that he wrote a play about it, which was then turned into a film script by his friend and collaborator Nigel Hughes.

Just before lockdown last year, Gareth was shown the script, and was excited by it. He decided that he and his production Company, Bedlam Films could take it on. Gareth likens film producers to property developers: they start with a script, (land) and see if they can 'build' a film (a number of properties) from the script, and make a profit, or at least break even. His responsibility is to oversee the budget, schedule and oversee the financing of the project.



The cheetahs in question are the critically endangered Asiatic Cheetahs, which used to abound all over Asia from Turkey to India, but are now confined to a designated nature reserve in North Eastern Iran, in a province called Khorasan, where it borders Turkmenistan. There are only about 43 Asiatic Cheetahs left in the wild. Several Iranian conservationists who were working on the project to preserve the cheetahs have been imprisoned because the authorities did not understand that the camera traps in the desert were for counting cheetahs, not for spying.

Gareth explained that due to the inherent political difficulties of filming in Iran, the film is going to be made in Georgia, which is in the Caucasus, bordered by Russia, Azerbaijan, Turkey, Armenia, and the Black Sea. Scenes involving villagers can be recreated, as there is a large community of exiled or ex- patriate Farsi speakers in Georgia. The film's director is Roxana Vilks. She is an Iranian/UK, award winning writer/director working in music, television, film and live performance. She has made films in the USA, Lebanon, France, Iran, Norway, Turkey and Iraq. Her work explores the themes of human rights, migration and cultural identity.

One of the ways to make filming carbon neutral is to employ local cameramen, hire local equipment and costumes where possible, and of course to employ people on the spot, rather than fly huge numbers of people and equipment out from the UK. Georgia is one of several countries that want to encourage film makers to base productions there, to create jobs, and they offer significant tax advantages to people working in film.

During the question and answer session which followed a member of the audience asked about whether filming cheetahs would be detrimental to them. Gareth had mentioned that there may be a scene in which a cheetah is killed by traffic on the roads.

The solution is to use CGI – Computer Graphic Imagery. So, for example, rather than kill one of the last remaining creatures, the film crew are going to make use of 'animatronics' to make a model, so 'no cheetahs will be harmed' during the production. The audience was amused to hear that Gareth had got into a bit of trouble when he used the phrase 'no animals were harmed' in the film credits of *The King's Speech*; he had not realised that this is a phrase copyrighted by the American Humane Association, and can only be used if they have 'awarded it'. Footage of Asiatic Cheetah cubs, filmed in Dublin Zoo will be used, overcoming the problem of getting film from Iran. The audience can be sure that 'no cheetahs or any other creature will be hurt during the production of *CHEETAH The Movie*.

During the talk we learnt Asiatic Cheetahs need a vast territory in which to hunt: 'Imagine the whole of London enclosed by the M25,' Gareth said; 'that territory would be sufficient to sustain six cheetahs'. They prey on hares, gazelles, mountain sheep and goats. Unfortunately they come into conflict with herders who have moved domestic flocks of sheep and goats into their habitat. Apparently female cheetahs are very 'picky' about which males they will breed with, and if there is an insufficient array of males, they may not breed, so loss of habitat and space endangers them.

Gareth said, that to be sustainable, a film must have a lasting legacy, as a drama, and a vehicle for environmental education. The British Council has said it will help by showing the film, and a whole package of lesson plans, educational materials are being developed by a team of educators, scientists and *CHEETAH The Movie* ambassadors.

PAWS and *CHEETAH The Movie* benefited from donations given by the audience on the way out. Many thanks are due to Gareth and the CHEETAH team for a fascinating evening, and we also enjoyed seeing Gareth's Oscar and BAFTA awards; some had the pictures taken clutching the Oscar!

We look forward to the finished film which should be out in 2022. Gareth promised that it would be shown in the Village Hall – so keep an eye out for it!

You can find out more on [www.cheetahthemovie.com](http://www.cheetahthemovie.com) or on Facebook – Cheetah the Movie, or on PAWS Facebook page: PAWS (Pangbourne & Whitchurch Sustainability).

If you missed the event in the village hall, it was filmed and will be available on Youtube if you missed it.

Kat Syfret



## PANGBOURNE FLOOD GROUP FLOOD PROTECTION INFORMATION

Dear Resident

Since the severe flooding in 2007, Pangbourne Flood Group has been working with West Berkshire Council, the Environment Agency and local landowners to improve flood protection for Pangbourne. Several measures have already been implemented such as raising the bund in the playing field behind Briars Close, constructing a flood defence wall, and regrading the ditch running between the Primary School and Briars Close. We have also worked with the Bucks, Berks and Oxfordshire Wildlife Trust on a project to repair the banks of the river Pang in their reserve near Tidmarsh.

However, every flood situation is different and we cannot plan for all eventualities. Flash flooding, such as that experienced in 2007, is particularly difficult to manage so as a home owner you **MUST** make sure you are as ready as you can be in case of future flooding.

There are various steps that you need to take:

### 1. Register with the Environment Agency Floodline Direct Service – 0345 988 1188.

This is the most important thing you can do. The Environment Agency will send you a warning message by text, email or phone call (your choice) if the local river that affects you has risen to a level where flooding may happen. **ADVANCE WARNING** is your best defence. It gives you time to take steps to minimise your risk. There are three warning levels:



Flood alert: Flooding is possible. Be prepared



Flood warning: Flooding is expected. Immediate action required.



Severe flood warning: Severe flooding. Danger to life.

### 2. Ensure you have your own Flood Protection available.

This should include your own sandbags, flood bags or similar (compost bags), heavy duty plastic to put behind them (they are pretty ineffective otherwise) and air brick covers as a basic minimum. These can be purchased from local builders' merchants or DIY shops. They are relatively inexpensive and usually quick to fix in place. It should be noted that West Berkshire Council and the Parish Council **do not provide sandbags**. Sandbags are only provided by WBC in exceptional circumstances to protect public buildings and to help the vulnerable who cannot help themselves. Any sandbags kept by the Parish Council are designed to be used to protect a strategic area to reduce flood risk for a number of houses – not for individual property protection. You also need to have your own flood protection available for your use prior to a flood situation. If you leave it until the property is at risk, you may be too late or find that the suppliers have no stock. Please be aware that sandbags will not provide any protection if flood water comes up through the floors of your house. For more information on FLOOD or contact Kay Lacey (see below) for a hard copy.

### 3. Make a Personal Flood Plan.

Keep a list of all your important contact numbers eg Insurance, Gas, Electricity, plus friends and family. Know how to turn off your Gas, Electricity and Water supply at the mains and where the stop cocks are located. Prepare a Flood Kit of basic essential items such as a torch, copies of your insurance documents, wind up or battery radio, bottled water, first aid kit and warm blankets/waterproof clothing. Keep a copy of the Environment Agency booklet "What to do Before, During and After a flood" with your Flood Kit. It has lots of useful information in it.

**The Pangbourne Flood Group** and the Parish Council are continually developing their own Flood Plan, and are taking steps to ensure that we are prepared and can act quickly to keep the impact of future flooding to a minimum. However, we can never know quite how the next flood situation will develop. Please help us and help yourselves by ensuring that you have your own property level protection in place, your own Flood Plan and Flood Kit.

**If you think you might need help in the event of a flood, possibly to move furniture upstairs, turn off stop cocks, or for any other reason** please put your details (NAME, ADDRESS, TEL NOs and ASSISTANCE REQUIRED) in an envelope and drop it in the Parish Office. Put "Flood Group" on the outside. Your details will be confidential and for the use of the Flood Group or Emergency services only.

*Thank you*

*Kay Lacey, Stephen Billyeald and Ed Penney – Pangbourne Flood Wardens*

Kay: laceykay50@gmail.com, 07889 231136

Stephen: stephenbillyeald@btinternet.com, 0118 984 3368

Ed: ed.penney@fastmail.net, 07756 432946

## THAMES VALLEY FLOOD SCHEME CONSULTATION OUTPUT REPORT

OUR CONSULTATION OUTPUT REPORT HAS BEEN PUBLISHED ON CITIZEN SPACE

There is a long history of flooding in the Thames Valley and this risk will continue to increase due to climate change.

The Environment Agency consulted on the project's ambitions, objectives and the approaches being considered to manage flood risk across the Thames Valley. The consultation ran for three months, from 26 May to 20 August 2021.

You can now view our output report which explains how we approached the public consultation, summarises the important issues raised, and explains the next steps following the consultation.

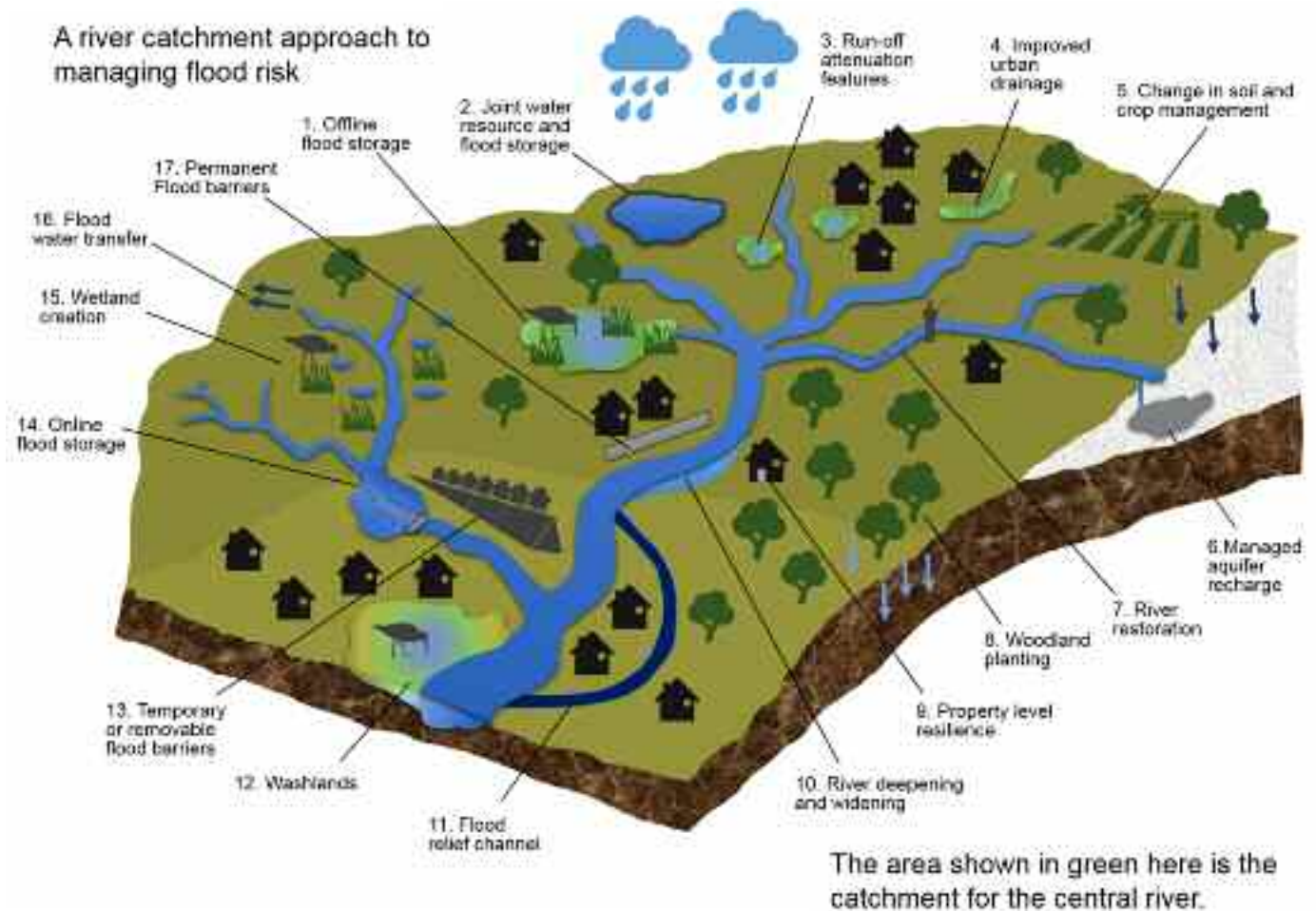
The majority of respondents agreed that managing flood risk in the Thames Valley is important. There was overall support for the approaches presented, with many respondents expressing an appreciation for the range being considered.

The TVFS consultation output report has been published on Citizen Space:

[https://consult.environment-agency.gov.uk/thames/tvfs-home/supporting\\_documents/Thames Valley Flood Scheme consultation report.pdf](https://consult.environment-agency.gov.uk/thames/tvfs-home/supporting_documents/Thames_Valley_Flood_Scheme_consultation_report.pdf)

To find out more and read our related documents go to:

<https://consult.environment-agency.gov.uk/thames/tvfs-home>





**FAMILY TREE**  
 GROUNDS MAINTENANCE AND CONSTRUCTION  
**Garden Maintenance**

- Fencing • Gates • Hedge cutting
- Decking • Patios • Grass cutting

**TEL. 07736 650 477**  
 email.familytreemc@gmail.com



**andrea newill**  
 GARDEN DESIGN

Beautifully designed gardens by  
 experienced, qualified, local  
 garden designer

**Andrea Newill MSGD**  
 info@andreanewill.co.uk www.andreanewill.co.uk  
 07901 856408 0118 9710450



**Foxes Tree Services & Son Ltd**

- Tree Surgery
- Tree Felling
- Hedge Cutting
- Logs
- Fencing
- Fully Insured
- Fully Qualified
- Free Quotations
- 24 Hour Callouts
- Competitive Prices

**01488 647204 07979 507 195**  
 robfox@foxestreeservices.co.uk  
 www.foxestreesurgery.com  
 Local business based in Newbury

Hedge Cutting Fencing Plant Hire Obstructive Trees Complete Tree Care Stump Grinding



**Perfect Boundary Limited**




**Hard Landscaping and Design.**

Approved Installer of Marshalls Products  
 and addagrip Resin Bound Products.

*Professional Service. Call for a Quotation.*

info@perfectboundarylimited.co.uk  
 Tel: 0118 9968 009 / 07796 202217  
 www.perfectboundarylimited.co.uk

addagrip



**J A M Upholstery**

Traditional Antique & Modern Upholstery  
 & Re-covering

Seat feeling soft and saggy?  
 Arms need firming up?  
 Lumbar lacking support?

Jenny can give your favourite chair the love and  
 attention needed to get it back in shape,  
 or simply give it a new look in a new fabric.

**www.jamupholstery.co.uk**  
 jenny@jamupholstery.co.uk 07976 443972  
 Based in Lower Basildon



**Coombe House**  
 RESIDENTIAL CARE

- Retirement home in Streatley on Thames
- 24 hour care and support by well qualified staff
- Elegant, homely and relaxed country house in attractive grounds
- Peace, privacy and independence in caring surroundings
- Serving the local community for over 30 years

**01491 872174 www.coombehouse.co.uk enquiries@coombehouse.co.uk**



## PANGBOURNE PARISH COUNCIL

Tel: 0118 9841118 Email: [clerk@pangbourne-pc.gov.uk](mailto:clerk@pangbourne-pc.gov.uk) Website: [www.pangbourne-pc.gov.uk](http://www.pangbourne-pc.gov.uk)

### TREE PLANTING PANGBOURNE MEADOWS



Thanks to everyone who took part in with the joint PAWS (Pangbourne and Whitchurch Sustainability Group) and Pangbourne Parish Council tree planting afternoon at Pangbourne Meadows on Sunday October 17th. In total approximately 40 tree saplings and young trees were planted which had been supplied by the Woodland Trust or grown by the volunteers. They were all native species and included field maples, oaks, grey willows, rowans and silver birches. The volunteers have each "adopted" a tree and will look after them while they establish in the months and years to come. It was lovely to see so many residents, community groups and families represented on this sunny autumn day for such a good reason. Many thanks in particular to Jackie Simpson for doing such a great job of organising the event.



### TREE MAINTENANCE WORKS PANGBOURNE MEADOWS

You will probably have also noticed the tree works carried out during November at the Meadows. Although this work will look dramatic throughout the winter, the trees should flourish again in the spring. The work has been carried out by local tree surgeons as recommended in a full tree survey and several trees have been pollarded for health including the two large willows in the middle of the meadows. Unfortunately some trees have also needed to be felled due to their poor condition and/or for safety reasons. Like many others we continue to be affected by ash die back. Much of the wood and chippings will be left in situ to rot down naturally and encourage the biodiversity of the meadows, however some of the chippings have been used to improve the entrance way by the Dolphin Centre. We also have plans to use the larger trunks to create natural seating and features on the meadows.



### REMEMBRANCE SUNDAY EVENT

The annual Remembrance Sunday Service took place again this year and in a departure with tradition, was held entirely outside in the churchyard of St James the Less Church due to the ongoing pandemic. We were fortunate to have members of Pangbourne College Band in attendance to provide the music as well as representatives of many local groups and organisations. The event was well attended with the weather holding out for the duration of the service. Thank you to all those who marshalled the road closure or helped organise the event, including the RBL

# COUNCIL NEWS

---



and members of St James the Less Church. Unfortunately, it was not possible to hold the parade this year as initially hoped, as the village was not able to secure the services of the usual parade marshall without which the parade element cannot go ahead. If anyone is interested in training to become a parade marshall or would be interested in helping the RBL in the future, please get in touch with either the local Royal British Legion or contact the Clerk at the Parish Council who can put you in touch so that we can make sure the parade takes place in years to come.

## DEFIBRILLATOR RELOCATION

With the closure of the Fire Station at the end of November, the village was at risk of losing the defibrillator sited at the station on Horseshoe Road. Pangbourne Parish Council have been able to take on the responsibility for this defibrillator after it was very generously donated to the village by Royal Berkshire Fire and Rescue Service and after discussions with St Bernadette's Church who have very kindly agreed to permit us to site the box on the outside wall of the church. The Parish Council will operate this defibrillator adding it to the others it already maintains at the recreation ground and village hall. We are very grateful to everyone involved in making this possible.



## VILLAGE HIGHWAYS WORKS



While highways, drains and footways remain the responsibility of West Berkshire Council rather than the Parish Council, we have been working closely with the Highways department at WBC, the District Councillor and residents to request that a number of works were carried out. White lining Following a meeting with the Chief Executive of the Council earlier in the year, re-painting of the white line markings throughout the centre of the village was requested as an urgent priority and this work was carried out in October. It is our understanding that renewal of the line markings under the Whitchurch Road railway bridge will also take place soon but this will require a road closure and so will need to be carefully scheduled. Permanent repairs to the footway around the railway bridge are also due to take place at that time. The Parish Council have written to WBC regarding the unsatisfactory condition of the path here.

**Re-surfacing:** Evening works were also undertaken to repair the carriageway surface including potholes near the crossing and on the Tidmarsh Road on consecutive nights in recent weeks.

**Bolisha Beacon:** The temporary beacon replacing the damaged beacon by the centre crossing will eventually be replaced by one to match it's opposite number and which is in keeping with the conservation area.

**Drainage:** Due to a number of regular highways puddles and partially flooded footways in the village centre making life unpleasant for pedestrians, the Parish Council have also been lobbying for a thorough inspection of all the highways surface water drains throughout the village. A full survey was undertaken earlier in the year and there have since been several visits to unblock many of these drains, although some remain outstanding. Should you be aware of any that are not draining surface water away properly, please do report these directly to West Berkshire via the "report a problem" menu on their website. It is very easy to do and you can pinpoint the affected drain on the map. This is very important in terms of ensuring the problem is recorded and logged in their system since more reports help to raise the priority of an issue to ensure that action is taken. Similarly, the Parish Council has also been pushing for action on a number of blocked foul water drains which are hopefully now fixed. If you are aware of any foul drains not working, please report these to Thames Water who have responsibility.

**Other Works:** Many will have noticed the new surfacing, drain clearance and curb stone repairs in Horseshoe Road, Meadowside Road and Short Street.

## QUEEN'S PLATINUM JUBILEE 2022

With the upcoming long bank holiday weekend to mark the Queen's Platinum Jubilee approaching in June 2022, the Parish Council are looking at possible plans for a number of ways to mark this event. We are looking for anyone who has any memories, photos or documents from the Coronation, Silver, Golden or Diamond Jubilees that they would be willing to share with us particularly if they have a local connection to Pangbourne. Did your road hold a street party? Did you attend any events? Do you have any stories to tell? We would love to hear from you on Clerk@pangbourne-pc.gov.uk or 0118 984 1118.

## PLANNING APPLICATIONS REVIEWED BY THE PARISH COUNCIL SINCE LAST ARTICLE

APP NO:	PROPOSAL	RECOMMENDATION	APP NO:	PROPOSAL	RECOMMENDATION
21/02475/ FUL	Erection of timber frame packing barn The Walled Garden, Bere Court Farm, Bere Court, Pangbourne	WITHDRAWN	21/02767/ FULMAJ	Construction of 13 flats and courtyards with reconfigured car park. Demolition of single storey flat roofed building. 17 Clifton House, Reading Road, Pangbourne RG8 7LU	OBJECTION
21/02611/ ADV	Business Logo/Name First Floor, 13 Reading Road, Pangbourne RG8 7LR	NO OBJECTION	21/02893/ HOUSE	Erection of driveway gate 41 Shooters Hill, Pangbourne RG8 7EA	COMMENT
21/02733/ HOUSE	Erection of side extension, replacement window to existing house and installation of outdoor swimming pool; with associated landscaping. The Old Coach House, Bere Court Road, Pangbourne RG8 8JU	NO OBJECTION	21/02894/ LBC2	Erection of driveway gate 41 Shooters Hill, Pangbourne RG8 7EA	COMMENT
21/02817/ HOUSE	Side Extension 40 Horseshoe Road, Pangbourne RG8 7JH	NO OBJECTION	21/03042/ HOUSE	Single storey rear extension 34 Purley Way, Pangbourne RG8 7JY	COMMENT

## APPLICATIONS DETERMINED BY WEST BERKSHIRE COUNCIL SINCE LAST ARTICLE

APP NO:	PROPOSAL	WBC DECISION	APP NO:	PROPOSAL	WBC DECISION
21/01528/ HOUSE	Extensions & Alterations Hillcrest, Courtlands Hill, Pangbourne RG8 7BE	APPROVAL	21/02114/ HOUSE	Demolition of existing rear lean-to conservatory and extension, and erection of new single storey tile-roofed rear extension. Creation of new loft room with traditional gabled dormer to rear elevation. Removal of 1970s front door and reinstatement of original placement of front door set back from front facade. 26 Thames Avenue, Pangbourne RG8 7BU	APPROVAL
21/01801/ CERTE	Permission was granted in 2004 for the construction of stables and the use of a total area of 0.09Ha of agricultural land as equestrian. The stables and the yard were built and the owners, using their field behind the stables for grazing and exercising the horses found the use of the designated equestrian land immediately adjacent to their garden unsuitable. Subsequently, to accommodate their daughters use of their relatively small garden various pieces of children's equipment were sited adjacent to the garden including a circular swimming pool, climbing frame slide and trampoline. This was done over 12 years ago and I attach an aerial photograph taken in 2010 which shows the land in use as garden with the pool and trampoline clearly shown. There is no fencing or division between the designated equestrian land and the residential garden. Jumps in the adjacent field can be seen in this photograph demonstrating the use of the field for exercising the horses. The applicants therefore request the current designation of the area of land as equestrian and as outlined in purple on drawing No LTC2021/02 be changed to residential. Lime Tree Cottage, Bowden Green, Pangbourne RG8 8JN	LAWFUL	21/02187/ HOUSE	Single storey rear extension 27 Bourne Road, Pangbourne RG8 7JT	APPROVAL
21/01941/ FULD	5 Bedroom detached dwelling, detached garage and hardstanding. Section 73 application to vary/remove conditions 2 (Approved Plans), 3 (Materials) and 13 (Lighting) of previously approved application 20/02329/FULD. Former Camden Ridge, Riverview Road, Pangbourne	APPROVAL	20/02508/ FULD	Creation of a separate residential dwelling unit through the conversion of an existing redundant ancillary residential building. Oakleigh House, Bere Court Road, Pangbourne RG8 8JU	APPROVAL
21/02072/ HOUSE	Rear mono-pitched extension and blocking up two side windows. 38 Reading Road, Pangbourne RG8 7JF	APPROVAL	21/02475/ FUL	Erection of timber frame packing barn The Walled Garden, Bere Court Farm, Bere Court, Pangbourne	WITHDRAWN
21/02060/ HOUSE	Proposed rear dormer roof additions. Blue Daws, Pangbourne Hill, Pangbourne RG8 7AS	REFUSAL	21/02372/ HOUSE	Erection of garden building 3 Croft Drive, Pangbourne RG8 8AN	APPROVAL
			21/01247/ HOUSE	Demolish outbuilding and flat roof area and replace with 1.5 storey extension with mezzanine. Replace oil heating with water source heat pump. Wharf House, Ferry Lane, Pangbourne RG8 7DW	REFUSAL
			21/02191/ FULD	Change of Use from Vacant / Sui Generis to Dwelling Kiosks, Water Pumping Station, Tidmarsh Road, Pangbourne	APPROVAL
			21/02273/ FULD	Detached replacement residential dwelling Gulberg, Pangbourne Hill, Pangbourne RG8 7AS	APPROVAL

**PAULBELCHER**  
**PROPERTY SERVICES OF PANGBOURNE**  
 T 01189843722 M 07888680834  
 paulbelcherpropertyservices@yahoo.co.uk

**ALL INTERIOR & EXTERIOR WORK UNDERTAKEN  
 AND COMPLETED TO A HIGH STANDARD**

**CALL OR EMAIL FOR FREE INDEPENDENT ADVICE  
 AND A NO OBLIGATION QUOTE**

**ALL WORK FULLY INSURED - NO JOB TOO SMALL**

**Shaun Guard**  
**TV & WIFI SERVICES**

- Aerials - supplied, repaired & poor reception solved
- Satellite - Sky Q dish upgrades, discreet dish installations also foreign TV
- Internet - blackspots cured, data cables to your TVs / computer
- TVs - hung on your wall or set up & tuned
- CCTV & Door Entry - domestic installations

**OXFORD AERIALS**  
**Call Pangbourne 01189 639113**  
[www.oxfordaerials.co.uk](http://www.oxfordaerials.co.uk)

**Plant & tool hire for  
trade & DIY.**

Your first choice for the best  
equipment, service and price.  
Go to [www.didcotplant.co.uk](http://www.didcotplant.co.uk) to  
check our online catalogue.



**DIDCOT PLANT**  
 PLANT AND TOOL HIRE FOR TRADE & D.I.Y.  
[www.didcotplant.co.uk](http://www.didcotplant.co.uk)  
**01235 814000**

**MADE TO MEASURE**  
*Curtains, Roman Blinds,  
 Cushions Covers, etc  
 at competitive prices.*

Call Caroline on  
 (0118) 9542448  
 or 07815 610 007

**Monumental & Masonry Craftsmen**  
 Family run business since 1858

<b>A.F. JONES</b> 33 Bedford Road Reading RG1 7EX Tel: 0118 9573537 email <a href="mailto:info@afjones.co.uk">info@afjones.co.uk</a>	<b>E.T. SHEPPARD</b> 36 Reading Road Henley on Thames RG9 1AG Tel: 01491 574644 email <a href="mailto:info@etsheppard.co.uk">info@etsheppard.co.uk</a>
--	--

**Specialists in all stonework**  
**Memorials, Restoration, Kitchens, Bathrooms**

**Aylett Electrical**



Kevin Aylett – your local,  
reliable, registered and  
insured electrician.

- Domestic installations
- Testing and repair
- Free quotes and advice
- All maintenance and repairs undertaken

Blossomsend Cottage Blossom Lane Theale RG7 5BE  
 Tel: 0118 9302037 Mob: 07986 033 051

**ADVERTISE IN THE  
PANGBOURNE MAGAZINE**



Pangbourne Magazine is  
issued every other month  
and has a distribution  
of 1,800 copies locally.

Contact Herald Graphics  
 on 0118 9311488 or  
[pangbourne@heraldgraphics.co.uk](mailto:pangbourne@heraldgraphics.co.uk)



## individual conservatories and orangeries by **Malbrook**



please contact us to arrange a design consultation

TEL: 020 8780 5522 • EMAIL: [info@malbrook.co.uk](mailto:info@malbrook.co.uk)

[www.malbrook.co.uk](http://www.malbrook.co.uk)

### ELECTRICIANS

#### Aylett Electrical

Kevin Aylett – your local, reliable, fully qualified and insured, domestic electrician.

0118 9302037

Mob: 07986 033 051

### FUNERAL SERVICES

#### A B Walker

See main advert  
on page 52.

Thatcham – 01635 873672

Tilehurst – 0118 304 0068

Reading – 0118 957 3650

### GARDEN SERVICES

MOLES? Are they ruining your lawn?

Call MoleMan Mark to get rid of them.

*British Mole Catchers Register* accredited.

07887 480014

### JEWELLERY REPAIRS

#### Sandy Ebdon-Jackson B.A.

Re-stringing, re-designing, replacing lost parts etc.

Please message description and photo of required  
repair for quote.

07789 238557

### LAUNDRY/DRY CLEANERS

#### Launderclean

4 Station Road, Pangbourne.

Launderette and dry cleaners.

0118 984 2197

### PAINTER

#### Andy The Painter

Interior and Exterior Painting.

Fully Qualified and Insured.

07933 266874

[andyblack007@outlook.com](mailto:andyblack007@outlook.com)

### PET CARE

#### Purley Pet Care

Pet boarding, walking and feeding for happy paws  
and waggy tails. Fully licenced and insured. Boarding  
or day care. Big animals or small. References available  
on request. Call Joan.

07867 676675

[joanjack@sky.com](mailto:joanjack@sky.com)

### PROPERTY MAINTENANCE

#### Duncan Agar

All aspects of maintenance including gutter cleaning  
and repairs, broken glass, painting, etc.

0118 9712340

07787 552983

# USEFUL NUMBERS

## USEFUL NUMBERS

POLICE	Non-emergency number	101
CRIMESTOPPERS		0800 555 111
PANGBOURNE PARISH COUNCIL (at Village Hall)		
	<a href="http://www.pangbourne-pc.gov.uk">www.pangbourne-pc.gov.uk</a>	0118 984 1118
	Parish Office opening hours – Mon am, Tues am, Thurs pm	
CHAIRMAN OF PANGBOURNE PARISH COUNCIL		
	Peter MacIver – <a href="mailto:peterpangbourne@gmail.com">peterpangbourne@gmail.com</a>	07768 004844
VICE CHAIRMAN OF PANGBOURNE PARISH COUNCIL		
	John Higgs – <a href="mailto:jhiggs@pangbourne-pc.gov.uk">jhiggs@pangbourne-pc.gov.uk</a>	0118 984 4758
CLERK TO PANGBOURNE PARISH COUNCIL		
	Becky Elkin – <a href="mailto:clerk@pangbourne-pc.gov.uk">clerk@pangbourne-pc.gov.uk</a>	0118 984 1118
WEST BERKSHIRE COUNCIL		
	Switchboard	01635 551111
CITIZENS ADVICE BUREAU		01635 516 605
MP FOR READING WEST		
	Alok Sharma	0118 941 3803
SURGERY		0118 984 2234
	Emergency out-of-hours (6.30pm – 8am)	111
PHARMACY		0118 984 2935
LIBRARY		0118 984 4117
PANGBOURNE AND DISTRICT VOLUNTEER CENTRE		0118 984 4586
PANGBOURNE PARISH PRIEST		
	Reverend Mark Hopkins – <a href="mailto:rector.ptschurches@gmail.com">rector.ptschurches@gmail.com</a>	0118 984 2928
FLOOD WARDENS		
	Kay Lacey	07889 231136
	Stephen Billyeald	0118 984 3368
	Ed Penney	07756 432946

## SUBMISSION OF ARTICLES\* AND ADVERTS†

	COPY DEADLINE	DISTRIBUTED
Issue 167 – March/April 2022	4th February	24th February
Issue 168 – May/June 2022	8th April	28th April
Issue 169 – July/August 2022	3rd June	23rd June

Please send all submissions to [pangbourne@heraldgraphics.co.uk](mailto:pangbourne@heraldgraphics.co.uk)  
Please bear in mind the distribution date when including dates in your articles  
(\*receipt of an article is not a guarantee of inclusion; †payment is required in full prior to publication)

# BEN HEATH

— BEAUTIFUL INTERIORS —



**KITCHENS • LIVING ROOMS • DINING ROOMS  
BEDROOMS • BATHROOMS  
CURTAINS & BLINDS • FABRICS • FLOORING • LIGHTING**

*LOCALLY MADE IN NEWBURY*

**Raceview House, Hambridge Road, Newbury, RG14 5SA  
T: 01635 523123 E: [sales@benheath.com](mailto:sales@benheath.com)**

# Your car in safe hands

**FREE**

local collection &  
delivery service



Celebrating over 30 years of committed, quality service in our community

**Email:** [enquiries@prmotors.biz](mailto:enquiries@prmotors.biz) **Web:** [prmotors.biz](http://prmotors.biz)

**Tel: 0118 984 4889**



Opening times: **Mon-Fri: 7:30am - 5:30pm**