



# Eagle Ridge

## A Golf Club Community

“THROUGH THE EYE OF THE EAGLE”

Another Seabreeze Publication

## Caught On Camera

Do you have any pictures you would like to share? Post them in the Caught on Camera spot. Submit your photos, with a brief description, to newsletter@eagleridge33912.com.



Photos by Phil Jones



Photo by Jeff, the groundskeeper

## Players Circle Theatre To Announce Season

Submitted by Jody Van Cooney

Robert Cacioppo and Carrie Lund, producers for the Players Circle Theatre at the Shell Factory in North Fort Myers, will unveil their new website and performance schedule on Aug. 31. The Players Circle Theatre, located in The Shell Factory, North Fort Myers, has scheduled its second season to begin in October, barring complications from COVID-19. The theatre is located in the former Dolphin Room.

Producers Robert Cacioppo and Carrie Lund had been seeking a location that would match their experiences and abilities in creating a theatre which could be converted into an arts center, meeting the needs in the northern area of Lee County, which has been underserved with a quality theatre. The former 60- by 60-foot events center has been reconfigured into a functioning theatre, lobby, theatre space (which can seat 50 to 180 patrons) and backstage area. Included in the renovation were lighting, curtains, sound system and comfortable theatre seats. Every seat in the house has an excellent view of the performance; no seat is more than four feet from the stage.

An announcement of the season’s performances will be made on Aug. 31, the date the new website, [www.playerscircle.org](http://www.playerscircle.org), is unveiled. Should the coronavirus delay the announced season’s performances, “plan B” will include an 80-seat nightclub with special distancing. Comedy, jazz, flamenco, and other major specialty acts perform in the venue.

The first event being held by the Cacioppo’s was a “No Ball Ball,” a fundraising event on “July 32” in which participants were not required to attend; it was a “pun in cheek” way of raising funds without attendees doing anything or going anywhere.

The theatre will be joining forces with the Shell Factory’s renamed restaurant, Southern Grill, by



offering special dinner/theatre packages. Free parking is available for all performances.

Current plans are for professional shows to be performed for three weeks with a two-week break for rehearsals for the next show. Local artists and performers are being sought to perform during dates when shows are not being presented.

Volunteers are being sought for all areas of the theatre’s operation; dates and hours can be adjusted to individual needs.

Individuals interested in purchasing individual or season tickets can contact the box office at (239) 800-9232, or by going to the website, [www.playerscircle.org](http://www.playerscircle.org).

The Players Circle Theatre was developed by veterans of the Southwest Florida theatre movement, Carrie Lund Cacioppo and Robert Cacioppo. They are prominent faces of theatre in Lee County for over 35 years, having started the first professional theatre, the Florida Repertory Theatre, which has been named “One of America’s best regional theatres” by *The Wall Street Journal*. Players Circle Theatre is a professional black box theatre providing Broadway-level entertainment. Follow it online at [playerscircle.org](http://playerscircle.org).



Photo by Liz Foster

**Deed of Restrictions**  
**Section A-15:**  
Pets must be on a leash at all times when being walked outside of the owner’s property boundaries. The pet owner is responsible for picking up all animal waste from their pet at all times. This includes the common areas! Violators are subject to fining.  
**- The Board of Directors**

**NOTICE**  
**Please clean up after your dog**



# Sudoku Puzzle

		8						9	4
			5	2		7			6
3									
1	9	3					4		
						5	8		
	6			3					
	2	4							3
				6	1		8		

Sudoku Puzzle Solution on page 6

## Word Scramble

### Lucky

By Ellie Neal

Karbe

Racmh

Ayd

Niisdnoce

Rwda

Sesgu

Brmune

Nyepn

Ohts

Rtsa

Kraset

Kretsi

Word Scramble Solution on page 6

## Seabreeze Communications

For Advertising Rates  
Please Visit Our Website  
[seabreezecom munications.com](http://seabreezecom munications.com)  
Or Call **239.278.4222**



## SHARKEY'S

PATIO WINDOWS & SCREENS, INC.

- Acrylic Windows
- Electric Storm/ Shade Screen
- Front Entryways
- Storm Protection

Lic. #SCC131151727

**239-699-4316**

Seabreeze Communications Group does not endorse any advertising as it relates to the communities. Inserted advertising is not screened by Seabreeze Communications Group.



## Seabreeze Communications GROUP

**Production Director** Jacquelyn Reid

**Sales Department**  
Al Ullio • Tom White • Margo Williams  
John Henderson • Joe Yapello

**Mailing Operations**  
Director Selina Koehler

**Production Manager** Lee Nostrant

**Production Department**  
Elaine Donholt • Ruth Nekoranec • Katie Heystek  
Sherry Whalon • Dianne Strout  
Karen Kalisz • Peter Hurth • Rachel Blanchard

All rights reserved. Reproduction or utilization of these contents in any form by any electronic, mechanical, or other means, including xerography and photocopying is forbidden without the written permission of the Publisher.

The Publisher is not responsible or liable for misinformation or misprints herein contained and reserves the right to accept or reject all copy deemed unsuitable for publication.

**(239) 278-4222 • Fax (239) 278-5583**  
5630 Halifax Avenue • Fort Myers, FL 33912  
Ft. Myers • Bonita • Estero • The Palm Beaches • Boca Raton  
[www.seabreezecom munications.com](http://www.seabreezecom munications.com)

# Crossword Puzzle

## Across

1. Informs
6. Beige
10. Umpires
14. Utilize
15. Midday
16. Angel’s headwear
17. Hospitality to strangers (Ancient Greece)
18. Historical periods
19. Brother of Jacob
20. Accusation of wrongdoing
22. Temporary worker
23. K
24. Positive pole
26. Air cleaner
30. Coach
32. Heavenly hunter
33. Nurse
37. Start over
38. Made fun of
39. Worry
40. Crossed eye
42. Subarctic coniferous forests
43. A foot traveller
44. Small indefinite amount
45. Jewish scholar
47. Legislation
48. Not sweet
49. Designation
56. Ballet attire
57. Delight
58. AM/FM device
59. Prima donna problems
60. King of the jungle
61. Honor fights
62. Netting
63. Ouches
64. Hiding place

## Down

1. Cab
2. Not odd
3. Territory
4. 53 in Roman numerals

1	2	3	4	5		6	7	8	9		10	11	12	13
14						15					16			
17						18					19			
20					21						22			
				23				24	25					
26	27	28	29			30	31							
32					33						34	35	36	
37					38					39				
40				41					42					
			43					44						
	45	46						47						
48					49	50	51				52	53	54	55
56					57					58				
59					60					61				
62					63					64				

5. Become looser
6. Foe
7. Center
8. A soft sheepskin leather
9. Unspoken
10. Bombastic
11. Alleviated
12. Blaze
13. A type of liquid food
21. Black gunk
25. Holiday drink
26. Not aft
27. Angers
28. Adriatic resort
29. Dental tool
30. Snouted animal
31. Component of urine
33. Superhero accessory

34. A gain or acquisition (archaic)
35. Therefore
36. Harvest
38. In jest
41. Thorax protector
42. In the direction of
44. One of the tribes of Israel
45. French for “Red”
46. Cars
47. Property claims
48. Flower stalk
50. Hodgepodge
51. Cat sound
52. Tight
53. Bright thought
54. Anagram of “Silo”
55. Snack

Crossword Solution on page 6

# McGREGOR DENTAL WANTS YOUR SMILE!

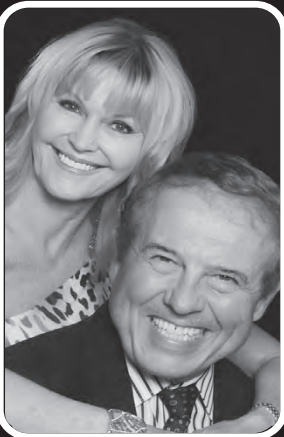
**NEW PATIENT  
SMILE SPECIAL**  
**Cleaning, Oral Exam  
& B.W. X-Rays**  
**\$225.<sup>00</sup> Value  
NOW \$79.<sup>00</sup>**

**WILLIAM SHORACK D.D.S.**

- 20 Years in Ft. Myers/Sanibel
- Emergencies Always Welcome
- State of the Art Dentistry

**239.590.9919**

15271 McGregor Blvd.  
(Across from Gulf Harbour CC)



WE CATER TO COWARDS!



## RESIDENTIAL & COMMERCIAL

- Standard Cleaning • Deep Cleaning • Move In/Out • Construction
- Vacation Rentals • SWFL Home Watch • Licensed & Insured

**CALL FOR FREE ESTIMATE**  
**(239) 961-2225**  
[KoehlerCleaning@gmail.com](mailto:KoehlerCleaning@gmail.com)



EXCELLENCE IS OUR EDGE

# Bufalo Contracting



Roofing • Siding • Gutters

- Restoration • Complete Tear Offs • New Roofs
- Re Roofs • All Types Of Flat Roofs • Free Inspection

Commercial / Residential  
5 Year Craftsmanship Warranty

24/7 Hour Service

CALL FOR YOUR FREE ESTIMATES • Serving SW Florida

[www.bufalocontracting.com](http://www.bufalocontracting.com)

239-785-3401





Extra Copies Of *Eye Of The Eagle* Newsletters Are Usually Available At The Golf Course Clubhouse

Eagle Ridge Residents

Jogging, bicycling, walking and other nongolfing activities or unregistered golf play are not permitted on the golf course.

Eagle Ridge Board Of Directors From March 2020 To March 2021	
John Spiegel, President	305-804-3051
Christine Leslie, Vice President	239-292-7182
Peggy Jermyn, Secretary/Treasurer	701-388-0420
Hewitt B. McCloskey, Jr, Director	239-225-6609
Kathy Furlong, Director	847-373-2040
<b>Committee Chairs</b>	<b>Board Liaison</b>
<b>Arbitration Board</b>	John Spiegel
Steve Norris, Chairperson (614) 284-0445	
<b>Architectural Control</b>	Hewitt McCloskey
Rick Jermyn, Chairperson (701) 388-0419, RAJermyn1@gmail.com	
<b>Deed of Restrictions</b>	Hewitt McCloskey
Kathy Furlong, Chairperson DOR@EagleRidge33912.com	
<b>Election/Mailing Committee</b>	John Spiegel
Steve Norris, Chairperson	
<b>Golf Committee</b>	Christine Leslie
Gary Melillo, Chairperson for Men (239) 777-0137 Fran Danek, Co-Chairpersons for Women (239) 454-5026 Phyllis Wayco, Co-Chairpersons for Women (239) 561-4619	
<b>Golf Liaison Committee</b>	John Spiegel
Jim Lutsch, Chairperson (239) 322-9588	
<b>Holiday Decorating Committee</b>	John Spiegel
Rick Jermyn, Chairperson	
<b>Legal Committee</b>	John Spiegel
John Spiegel, Chairperson (305) 804-3051	
<b>Landscape and Beautification Comm.</b>	Hewitt McCloskey
Hewitt McCloskey, Chairperson (610) 864-6459	
<b>Security/Safety Committee</b>	Peggy Jermyn
Connie Hope, Chairperson (215) 527-1217	
<b>Social Committee</b>	Peggy Jermyn
Sherri Holly, Chairperson (239) 770-3099	
<b>Surface Water Drainage Committee</b>	John Spiegel
Christine Leslie, Chairperson (239) 292-7182	
<b>Welcoming Committee</b>	Peggy Jermyn
Kathy Furlong, Chairperson (847) 373-2040	
<b>Eye of the Eagle</b>	John Spiegel
Pam Whitenight, Editor Newsletter@eagleridge33912.com	
<b>Eagle Ridge Additional Contact Information</b>	
<b>Replacement of Lamppost Bulbs and Light Sensors:</b> Contact Joe Foster....(239) 218-7714 and leave your name, address and phone number.	
<b>Flagpole Holders and Damaged Mailbox Repairs, Painting of Mailboxes and Light Poles</b> Contact Dennis Shelley, (239) 887-1042.	
<b>ERPOA Web Maintenance</b> Contact Ed Schuler, (267) 513-0800.	



**The New Math:**

**\$1 = \$8**

**That's right! The Harry Chapin Food Bank can find, rescue, transport and distribute \$8 of nutritious food for every \$1 you donate. This turns your \$20 gift into 80 meals for a family!**

*Thank you for your generosity!*

Mail your donation to:  
**Harry Chapin Food Bank**  
3760 Fowler Street,  
Fort Myers, FL 33901  
Call (239) 334-7007 or visit:  
**harrychapinfoodbank.org**



**Harry Chapin Food Bank**  
OF SOUTHWEST FLORIDA

# Pedestrians Are Responsible For Their Own Safety

## Pedestrians Are Not Always Walking

*A pedestrian is a person traveling on foot, whether walking or running. Pedestrians also include people riding skateboards, are on roller skates, or are in wheelchairs.*

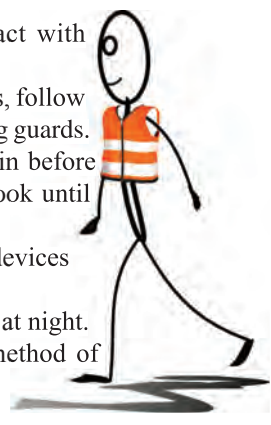
As the school year approaches, both children and adults will be walking more in both the morning and afternoon hours. Drivers and pedestrians alike share the responsibility of keeping themselves and others on the road safe. Safety is a two-way street. Often pedestrians are not where they should be or where you would expect them to be.

Thirty-two percent of pedestrian fatalities occur between 8 and 11 p.m. Unintentional pedestrian injuries are the fifth leading cause of injury-related death for children ages 5 to 19. Teenagers have a death rate twice that of younger children. Regardless of where and when children and adults are walking, the Injury Prevention Coalition of Lee County provides these simple tips to make sure you get to your destination safely.

**Do's**

- Always walk on sidewalks or paths and cross at street corners using traffic signals and crosswalks.
- If there are no sidewalks, walk facing traffic as far to the left as possible.
- Cross at the street corner and walk on the painted area (zebra lines).

- If possible, make eye contact with drivers before crossing the street.
- During school operation hours, follow the directions of the school crossing guards.
- Look left, right, and left again before crossing the street. Continue to look until safely across.
- Put phones, headphones and devices down when crossing the street.
- Wear bright, reflective colors at night.
- Have a flashlight or other method of letting cars know you're there!



**Don'ts**

- Never walk or run between parked or moving cars or in parking lots.
- Never assume that the driver sees you.

In other words, be visible; stay alert and avoid distractions; follow the rules; walk in safe places; and adults should avoid alcohol consumption and not drive under the influence.

The Lee County Injury Prevention Coalition serves as a collaborative effort or partnership whose function is to facilitate partners' work and act as a catalyst for injury prevention initiatives. Its mission is to prevent injury, disability and death through advocacy, education, legislation and partnerships.

Additional information about the Injury Prevention Coalition or pedestrian safety may be obtained by contacting Brian Raimondo at [ipcleecounty@gmail.com](mailto:ipcleecounty@gmail.com) or (239) 330-2240.

## Eagle Ridge Bulletin Board

*If you have an announcement, we will include it in this column. Email [newsletter@eagleridge33912.com](mailto:newsletter@eagleridge33912.com) with your request.*

**Eagle Ridge Golf News**

Eagle Ridge property owners. All golfers should sign up for the rewards program. They now have a league that has started last month June, for all rewards members. They play every Monday evening and you sign up weekly to play. It's a great deal and all information is in the pro shop. July rates change so you can also call for current rates. Please let's all remember the course is not for walking or kids to be playing on regardless of the time, the course has access roads to be used only by golf course employees and equipment. Please let's respect the golf course grounds and keep everyone safe.

Jim Lutsch, your golf liaison, and he can be reached at (239) 322-9588.

\*\*\*\*\*

**Camera Club Invites Enthusiasts To Attend Bi-Monthly Meetings**

We have come to the end of our current meeting sessions until late 2020. Please consider participating or hosting an event during the next round!

All photography enthusiasts are invited to attend a Fort Myers Camera Club meeting on Friday from November through April. The meetings are held from 7 to 9 p.m. on the first and third Friday at the Cypress Lake United Methodist Church Fellowship Hall, 8570 Cypress Lake Drive, Fort Myers.

Anyone interested in photography at any level is welcome. Mentor programs, outings, competitions and exhibitions, guest lecturers and more provide members with opportunities to improve their photography skills and make new friends.

Additional information about the club is available at [www.fortmyerscc.com](http://www.fortmyerscc.com).

\*\*\*\*\*

**Fort Myers Republican Women's Club Candidate Forums To Begin At Monthly Luncheons Of Republican Women**

The Fort Myers Republican Women's Club is waiting to hear when they will be allowed to reconvene regular luncheons, possibly in July. Additional information about the club may be obtained by contacting Tina Laurie, (239) 489-4701.

\*\*\*\*\*

**Continental Women's Club Of Fort Myers**

We do not have any updated information on the next meeting as of this printing. Many social events have been postponed, as you know, due to the COVID restrictions. Please check back next month!

Continental Women's Club monthly meetings are held on the first Thursday of each month at 11:30 a.m. at The

Hideaway Country Club, 5670 Trailwinds Drive, Fort Myers 33907. The cost to attend the luncheon is \$24.

Please call (239) 691-7561 for additional information.

\*\*\*\*\*

**Dining In Club**

We have come to the end of our Dining In gatherings until late 2020. Please consider participating or hosting an event during the next round!

We meet monthly from November to April. If you would like more information about Dining In, please call Connie Hope at (239) 225-6609.

\*\*\*\*\*

**Volunteer In Your Eagle Ridge Community**

If you are interested in serving on the Eagle Ridge Board of Directors or would like to serve on one of the committees, please contact one of the following Board members: John Spiegel, Hewitt B. McCloskey Jr., Peggy Jermyn, Christine Leslie or send an email to [Info@EagleRidge33912.com](mailto:Info@EagleRidge33912.com)

\*\*\*\*\*

**Ways To Communicate**

Eagle Ridge has a Facebook page. This is a private group **only** for Eagle Ridge residents. To join, find "Eagle Ridge Community Fort Myers" on Facebook. Then click on request to join. You will be prompted to enter your address. This will be checked against property records to confirm you are a resident.

Eagle Ridge is also on NextDoor.com. You can join and select to communicate with only Eagle Ridge residents and/or our neighboring communities.

\*\*\*\*\*

**The Florida Yards & Neighborhood (FYN)**

Join us at a Florida Yards & Neighborhoods class and learn the nine principles that guide Florida-friendly landscaping in Lee County. The class is given under the auspices of University of Florida IFAS Extension Lee County.

Each principle is explored in class, so you can apply what you learn to your own yard. Plant selection and placement, efficient irrigation, proper mulching, and techniques to obtain a beautiful and healthy yard will be discussed. To learn more, visit <http://fyn.ifas.ufl.edu/>.

We are currently conducting the classes via Zoom but hope to get back to doing them in person at some point. You can see the schedule and sign up for a free class on Eventbrite.com.

\*\*\*\*\*

**Your Eye Of The Eagle**

If you are not receiving your *Eye of The Eagle* newspaper, please contact **Pam Whitenight** at (952) 412-3243.

Extra copies of *Eye of the Eagle* newsletters are usually available at the golf course clubhouse. They also may be downloaded from the Resources tab on the Eagle Ridge website: [www.EagleRidge33912.com](http://www.EagleRidge33912.com).



# Cooking By Connie

By Connie Hope

What is the month of August known for? It is National Read a Romance Month and National Mustard day on Aug. 3. It is National Goat Cheese Month and National Catfish Month. It is also Orange and Papaya Month. Let's try and make Papaya-Mango Salsa. This can be used with a fish dinner or chicken or shrimp. Mangos are just ripening on the tree now, so it is a good time to use then up. It is very tasty and easy to make. Give it a try.

**Papaya-Mango Salsa**

- 1 papaya, skinned and diced fine
- 1 mango, skinned and diced fine

- 1 jalapeno pepper, diced very fine (if you don't like too much jalapeno just use half of the pepper)
- 1 red pepper, diced fine
- 1 small red onion, diced fine
- 1 tablespoon olive oil
- 1 teaspoon cumin
- Salt and pepper to taste

Combine all ingredients to make the salsa. Let stand and refrigerate overnight. This way the flavors mingle. Can be kept in refrigerator for several weeks. Enjoy!



## Eagle Ridge Job Spot

*Non-businesses only please! All business owners should contact Seabreeze Communications to place an ad. Are you looking for an odd job? Want to be included in the Eagle Ridge Job Spot? Email your information to Debby LeBlanc at Newsletter@eagleridge33912.com. Baby-sitters, pet sitters, yard work and more.*

**Jenni Caves, (239) 336-4282.** Providing marketing assistance to businesses and nonprofits. I have over 15 years' experience in advertising, marketing, public relations, social media and website development. Let me focus on your marketing initiatives to grow your business while you focus on your business. Together we will develop the right marketing mix geared towards your audience to increase sales. Email: jrcmarketingconsultant@gmail.com. Facebook page: www.facebook.com/JRCMarketingLLC.

**Samuel Clere, (239) 691-8773** (my father's number) or samuelclere@outlook.com. Need help cutting your lawn, painting your mailbox, or other odd jobs? I am an Eagle Ridge resident, student, and Boy Scout, I can cut and trim your yard, manage the house, and other jobs for a very reasonable fee. Please contact me for a free estimate. Thank you for your consideration!

**Nancy Crook, (239) 220-0396.** Need assistance in your home, meals, grocery shopping, doctor/dentist appointments, light housekeeping, and personal care? I live on American Eagle Court. I have many years of experience with in-home assistance. How can I help you?

**Patty Fajardo, (239) 208-9956.** Are you looking for some help? I am a permanent resident at Eagle Ridge and am available for a variety of jobs – house cleaning, running errands, yard work, planting, pulling weeds, grocery shopping, etc. Please call – home (239) 208-9956 or cell (757) 449-9823.

**Karleen Halfmann, (239) 292-6302.** Karleen's Coastal Home Watch. Licensed Realtor and competitive pricing. Eagle Ridge resident. Email: karleensellsswfl@aol.com. Call or email for information.

**Connie Hope, (215) 527-1217.** Absentee Homeowner Services: "While you're away" I can check your home or condo (weekly/biweekly/monthly). I can validate yard maintenance and irrigation, pick up parcels and mail, check water, check appliances, arrange for repairs and services and much more. I am in the community. Call or email conniehope@comcast.net.

**Connie Hope, (215) 527-1217.** Secretarial work, outreach office work, write your letters, answer your email, also light accounting, prepare things for taxes. I have been a Florida notary for the last 10 years.

**Estela Kimble, (239) 208-8287.** CPR-AED – First Aid certified. Can provide assistance with mobility concerns such as bathing/dressing/housekeeping/skilled at preparing healthy meals as a chef ... offering my services in private homes.

**John Kincaid, (239) 286-7010.** Home Watch for snowbirds or travelers. I am a full-time Eagle Ridge resident insured and bonded. Comprehensive reports with pictures and GPS verification are provided after every visit. Check for leaks, temp/humidity, intrusions, pests and much more. Verify lawn and pool maintenance. Don't have a nasty surprise when you get into town. Your insurance company may not cover a claim without this service weekly/bi-weekly/monthly. Call or email john@fmhomewatch.com.

**Andrew Kirksey, (239) 768-0335.** Pressure washing: roofs, driveways, rain gutter cleaning, lanais and cages. No job too small.

**Kathie McDonough, (239) 478-0060.** A resident on Triple Eagle Court, Kathie does pet sitting and home watch.

**Diane Nichols, (239) 825-5861.** Notary public state of Florida since 1986. I will pet sit, house sit, and babysit.

**Ginny Schuler, (215) 542-9474.** College applications. I provide assistance in all aspects of the process. I have 30-plus years' experience in helping students gain entrance into the most competitive colleges and universities in the nation. By the time your child completes his or her sophomore year, the process of college selection should be underway. This requires timely scheduling of PSATs, SATs and ACT tests, organizing activity sheets and selecting reasonable college choices (reach, average and safety). My additional specialty is assisting students in writing excellent personal essays and short supplements.

**Dennis Shelley, (239) 887-1042.** Handyman and home services. Lanai screens, painting, junk hauling, home watch, lighting, garage cleanups, local moves, and he is a specialist in home security consultations and upgrades, offers free home security evaluations and tips.

**Edith Weber, (651) 410-6596.** CNA with over 35 years' experience, I can help with daily living activities such as bathing, hair and nail care, cooking, shopping, etc. Licensed and CPR certified

**Doug Wyatt, (618) 558-8176.** I am a full-time resident at The Fairways and have over 25 years of experience doing interior painting in extremely nice homes. I am very meticulous, accommodating, neat, and tidy. I can also help out with light handyman work like replacing faucets, light fixtures, door locks, etc., as well as trimming bushes, cleaning gutters, house sitting, or anything you need that I am able to do.

# Security Central

By Connie Hope

Kids are off from school for the summer because of this pandemic. They are restless and bored and want something to do. Please be alert to this fact and make sure that your garage doors are closed and all doors in your car and your home are locked.



Keep your eyes open and check your car and doors as well as keeping an eye on your neighbor's property. If you see something that is not normal, call the nonemergency number at (239) 477-1000 so the deputy can come and check on things. If you feel it is an emergency call 911.

I have been talking with my connection in the sheriff's office and he has requested that a sheriff's car travel through our community later at night to check on things. I really appreciate this. They also have put a trailer at Eagle Ridge Drive which collects the license plates of cars and trucks coming into the community. If you see a car just driving around and around particular late at night, consider calling the nonemergency phone number. Let's keep our community safe. You are the eyes and ears of the community.

## Mailbox Maintenance And Repair

Mailbox doors have a closure spring that eventually breaks after thousands of openings. It is important to replace them as soon as they are discovered as they usually result in a broken door, which is a much more expensive repair. Call **Dennis Shelley, (239) 887-1042.** The cost of installing a new spring is \$34. If the door casting breaks, it costs an additional \$112 to repair the door. Dennis also has specially manufactured flagpole holders to match the lampposts. They are available for \$89 installed. Your mailbox and lamppost can also be repainted for \$49, which will bring them back to their "like-new" appearance. Dennis also offers handyman services.



## Architectural Control Information

Please remember that any exterior changes you plan to make to your home need to be approved by the Architectural Control Committee.

For example, this includes reroofing, exterior painting, landscape changes, swing set installations, etc. We live in a deed-restricted community and these controls have been put into place for the good of each homeowner so as to maintain our beautiful community. Please contact Rick Jermyn (701) 388-0419 or RAJermyn1@gmail.com so that your changes can be reviewed and approved.

A form is available for download from the Eagle Ridge website: www.EagleRidge33912.com on the Resources tab.

We plan to work hard for you to keep our community – the one you all moved into – please help us do that!

The Board of Directors

## CHARLA FOX FOR LEE COUNTY SCHOOL BOARD DISTRICT 2



### The Only Teacher in the Race to Have Taught During the Covid-19 Pandemic.



We are in a unique period where virtual instruction is necessary until the virus is defeated. Charla is the only candidate who taught virtually during the Pandemic. She has first-hand knowledge and experience to take to the Board.

<https://charlafoxforschools.com>



Charla Fox For Schools

- ◆ Doing What Is Best for Students ◆ Supporting Teachers and Support Professionals
- ◆ Advocating for Local Control ◆ Fighting for Necessary Resources for Our Public Schools



## The "Ridge" Rack

Notice: Advertisements for the newsletter must be placed through Seabreeze Communications. Call (239) 278-4222 for information. I have no role or pricing information on the placement of ads and/or inserts.

**Deadline:** Submission of articles for the *Eye of the Eagle* must be received no later than the **sixth** of each month. Email articles, pictures or information for the Bulletin Board, to newsletter@eagleridge33912.com.

Articles can be submitted attached to or contained in an email. Photos should also be emailed as attachments.

**Eye of the Eagle:** If for any reason you do not receive your *Eye of the Eagle* or if you need extra copies, the paper is also available at the golf clubhouse.

**Flagpole holders and damaged mailbox repairs and painting:** For mailbox repairs, including doors, springs or broken parts and painting, call Dennis Shelley, (239) 887-1042.

**Replacement of lamppost bulbs and light sensors:** Please call Joe Foster at (239) 218-7714 and leave your name, address, and phone number.



# Catch The Action

## August On The Water

By Capt. Bill Russell

August in Southwest Florida means hot sticky days, plenty of rain, and often thunderstorms. If you do not mind working around the weather the fishing is often pretty good and competition is scarce.

Catching redfish should become more consistent as the month progresses. Odds are better on days with extreme high tides; this is the time to fish the baits deep under the shade of the mangroves.

Floating a silver dollar size live pinfish or pilchard under a cork or soaking dead bait including cut ladyfish, pinfish, and mullet are all excellent redfish baits. These redfish are tight under the mangroves on the higher stages of the tide, it is important to keep the bait as tight to the mangroves as possible. Cut bait often



makes a better choice than live under the bushes, as redfish are scent feeders and fresh cut bait oozes plenty of stinky aromas. By the end of the month schools of large reds should begin bunching up on the flats for their fall run.

There's opportunity to hook into some big catch and release summer trout along with lots of undersized fish. Look for the larger trout widespread over areas of open water where sand bars separate deeper water from three- to six-foot-deep grass bottom. Schools of baitfish are concentrated in these areas. Trout, along with Spanish mackerel, bluefish, ladyfish and small sharks are working the bait schools. This summer we are catching sand trout around these same areas. If you are not familiar, they look very similar to a spotted sea trout without the spots. The good news, they are very good eating plus have no size limit or season. They do have a one-hundred-pound bag limit, but I do not think we have to worry about exceeding that.

Season remains closed for snook, spotted sea trout, and redfish in waters of southwest Florida from the Hernando/ Pasco county line south through Gordon Pass in Collier County. With the closure and catch and release only, stocks appear to be rebounding nicely. You can visit [www.myfwc.com](http://www.myfwc.com) for all current regulations.

The mangrove snapper bite should continue strong throughout the inshore and near shore waters. Look for them

schooled up around structure with good water movement; this could include any of the Gulf passes, docks and jetties, bridges, piers and natural or man-made reefs. For bait, live shrimp, pilchards and small pinfish are the ticket, plus small pieces of cut bait. Snapper have great vision, a small circle hook with three to four feet of ten to twenty-pound fluorocarbon leader will put the odds in your favor. Snapper are not only hard fighting for their size, but also one of the absolute best tasting fish in our waters. If you have visitors over the summer, snapper can make a great target and reward you with a fine dinner.

Offshore, most anglers are looking for grouper and snapper, often making a long run of thirty miles or better for the larger fish. Closer to shore, within 10 miles of land, keeper size gags could be holding over limestone and rock ledges. Trolling deep diving lures or fishing live bait are favorite methods. Anchored over a near shore reef with a block of chum is a good bet to attract mangrove snapper plus a host of other fish. The best bet is to be on the water before sunrise and get back near shore early in the day ahead of afternoon storms.

Use the weather and tides to your advantage and fishing can be good during the hot month of August. Our inshore water temperature can change quickly, give us three or four days with bright sunny skies and the inshore waters quickly get hot and the bite can slow. A couple rainy days with limited sunshine and the water will drop several degrees; this can trigger very good fishing.

For charter information, please contact us at Gulf Coast Guide Service and "Catch the Action" with Capt. Bill Russell, call or text (239) 283-7960, website: [www.fishpineisland.com](http://www.fishpineisland.com), email: [gcl2fish@live.com](mailto:gcl2fish@live.com).



Capt. Bill Russell is a native and lifelong resident of Pine Island who has spent his entire life fishing the waters surrounding Pine Island and Southwest Florida. For the past 25 years Bill has been a professional fishing guide who takes pride in customizing each trip to ensure everyone on board has a great time and will return again. Come join us and "Catch the Action."

Word Scramble Solution from page 2			
Break	Decision	Number	Star
Charm	Draw	Penny	Streak
Day	Guess	Shot	Strike

### Sudoku Puzzle Solution from page 2

2	8	6	5	1	3	7	9	4
9	4	5	2	8	7	3	1	6
3	1	7	9	4	6	2	5	8
1	9	3	7	2	8	4	6	5
4	7	2	6	9	5	8	3	1
5	6	8	1	3	4	9	2	7
6	2	4	8	5	9	1	7	3
7	3	9	4	6	1	5	8	2
8	5	1	3	7	2	6	4	9

### Crossword Solution from page 2

T	E	L	L	S		E	C	R	U		R	E	F	S
A	V	A	I	L		N	O	O	N		H	A	L	O
X	E	N	I	A		E	R	A	S		E	S	A	U
I	N	D	I	C	T	M	E	N	T		T	E	M	P
				K	A	Y				A	N	O	D	E
F	I	L	T	E	R		T	U	T	O	R			
O	R	I	O	N		C	A	R	E	G	I	V	E	R
R	E	D	O		J	A	P	E	D		C	A	R	E
E	S	O	T	R	O	P	I	A		T	A	I	G	A
				H	I	K	E	R		D	O	L	L	O
		R	A	B	B	I				L	A	W		
S	O	U	R		N	O	M	I	N	A	T	I	O	N
T	U	T	U		G	L	E	E		R	A	D	I	O
E	G	O	S		L	I	O	N		D	U	E	L	S
M	E	S	H		Y	O	W	S		S	T	A	S	H

# Montage Women’s Club

The Montage Women’s Club is a social and philanthropic club open to all women residing in Lee County. We meet on the fourth Thursday of each month at The Landings Yacht, Golf and Tennis Club. Meetings begin at 11:30 a.m. with a short social period followed by lunch and then an informative speaker program. Within the organization are various interest groups for members’ participation. Membership is open to both year-round and seasonal residents.

This year for our charity project we decided for the first time to sponsor deserving young women in their pursuit of a higher educational degree. Our Scholarship Committee focused on all the local high schools and received many

qualified applications. Montage currently has a membership of over 100 women, and we were able to collect over \$7,500 in order to donate three scholarships of \$2,500 each to three local young women.

The winners of the first Montage Women’s Club Scholarships are Samantha Burg, Catherine Caballero, and Earnisha Moore. These three young women are a credit to the Fort Myers community and will certainly achieve great success as they pursue and reach their life goals.

If you would like to attend a Montage meeting, need further information, or would like to make a reservation, please call Rita Artwohl at (239) 481-7765.

DRY CLEANING  
To-YOUR-DOOR®

FREE Pick-Up and Next Day Delivery!

239•567•1468

Extra Service ... No Extra Cost

When we realize how valuable time is, we rethink how we spend it.

In a time of new priorities, it may be time for a new plan.

Our lives should be shared with family and friends and spent mostly on joyful pursuits—not filled with worry and uncertainty.

At Cypress Cove, you'll find the senior living options you need to create a plan for your future that aligns perfectly with your priorities.

10200 Cypress Cove Drive | Fort Myers, FL 33908  
239-481-6605 | [www.CypressCoveLiving.org](http://www.CypressCoveLiving.org)

Talk & Tour!

Choose either a virtual visit from the comfort of your home or a private one-on-one appointment at our beautiful, new Welcome Center. Call 239-481-6605 or sign up at [CypressCoveLiving.org/visit](http://CypressCoveLiving.org/visit)



# Trees Reach Champion Size At Edison And Ford Winter Estates

Edison and Ford Winter Estates has five trees on the official Florida Champion Tree Register. The American Forests organization created the champion tree program in 1940 to recognize the largest known tree of each species in the United States. In 1975, Florida began keeping a state register and recognizes the largest trees within the state.

For a tree to qualify, a forester from the Florida Division of Forestry measures and scores it for program consideration. Scores are based on tree height, trunk circumference measured at about four and one-half feet from the ground and crown canopy. The champion isn't always the tallest tree. For example, the champion Buddha Coconut tree (*Pterygota alata*) in the Edison Ford research gardens is one of the tallest trees on the property, measuring 85 feet tall, but it is actually eight feet shorter than the other Buddha Coconut on the grounds.

The champion has a larger circumference (112 inches) and larger crown canopy, giving it a few more total points.

There are four other champions around the site: the King or Alexander Palm (*Archontophoenix alexandrae*) is located near the Moonlight Garden and stands at 66 feet tall and 40 inches in circumference; the Blue Mahoe (*Talipariti elatum*) is 59 feet tall and 133 inches in circumference and is growing near the pier; the Indian Coral Tree (*Erythrina variegata*) is 35 feet tall and 114 inches in circumference and is located near the Edison guest house; and the Puerto Rican Hat Palm (*Sabal causiarum*) is 45 feet tall and 89 inches in circumference, and stands near the Edison caretaker's house.

Other notable trees, include the Ditabark (*Alstonia scholaris*), located at the far end of the first parking lot off McGregor Boulevard. It is a Florida Challenger at 69 feet tall and 130

inches in circumference. It's a big tree, but there are two co-champions in Miami-Dade County that score higher. The iconic Banyan tree is considered by many to be the largest banyan in the continental United States and was once awarded Florida Champion Tree status. However, to protect historic buildings, the tree has been trimmed. The program currently lacks a standardized method to measure the circumference of trees like the banyan, which prevents it from officially being declared as a champion. Tree experts are trying to establish a standard

method for measuring banyans for future comparisons and the Florida Champion Tree program does not currently include banyans on the list of measured species.

There are many other majestic trees on the property, including ones that don't qualify for champion status. The Mysore Fig (*Ficus drupacea*) on the Ford property is grand with a height of about 86 feet and a circumference of 305 inches, but it does not even qualify for challenger status. The site has had six other champions over the years; however, some trees have died, and others have been surpassed by trees elsewhere in the state.

Beyond the champion trees, there are hundreds of other plants for visitors to see. The botanical gardens consist of 20 acres with more than 1,900 plants from 750 different species – not counting short-lived plants. There are also 300-plus species of ornamentals, 170-plus species of non-fruiting trees, 85 species of fruit trees, 14 species of citrus trees (not including the new plantings on the Ford property), 20 species of ficus, 97 species of palms, 17 species of bamboo, 20 species of cycads, 43 types of vines and 35 Staghorn ferns!

Throughout the site, there are several areas of defined specialty gardens, including the Moonlight Garden, filled with white flowers and a reflecting pool; Clara Ford's Rose Garden; the Succulent Garden, with an Agave plant that was an offspring from Thomas Edison's plant; a shade garden; a butterfly demonstration garden; and an area dedicated to Florida native plants.

For anyone who has never been to the site, there is a lot more to see beyond the gardens. The site includes the historic winter homes of Thomas Edison and Henry Ford, caretaker's homes of both inventors, Edison's study, a 15,000-square-foot Inventions Museum, and the Botanic Research Laboratory – a National Historic Chemical Landmark. Visitors can see hundreds of inventions and artifacts, as well as several antique cars.

The site is open from 9 a.m. to 4:30 p.m., seven days a week. There are several tour options, including self-guided, historian-led guided tours, inside-the-homes, automotive, and garden tours. Due to COVID-19, tour group size is currently limited to 10 people and masks are required for all guided tours. Masks are also required inside the museum and the botanic research laboratory. For everyone's safety, all staff are wearing masks, sanitizer stations are available throughout the site, and plastic shields have been installed at the ticket counter.

Visitors are encouraged to wear masks at all times and practice social distancing. Masks are available for sale in the museum store. For tour times, tickets or additional information, visit the website at [www.edisonford.org](http://www.edisonford.org) or call (239) 334-7419.

## Edison And Ford Winter Estates

*Edison and Ford Winter Estates is the internationally known winter home site of Thomas Edison and Henry Ford. More than 250,000 visitors walk through the location each year from all around the globe. The organization has received many awards, including the National Stewardship Award from the National Trust for Historic Preservation and the National Garden Clubs' Historic Preservation Award. The property is an official project of "Save America's Treasures," a Florida Historic Landmark and a National Register Historic Site. The Edison Botanic Laboratory is a National Historic Chemical Landmark. The site is open every day except Thanksgiving and Christmas from 9 a.m. to 5:30 p.m. and until 9 p.m. during the month of December for Holiday Nights.*



*The Buddha Coconut (Pterygota alata) in the research gardens at Edison and Ford Winter Estates stands 85 feet tall and is one of the tallest trees on the property.*

## Welcome to our Bridge Branch

### Our NEW Bridge Branch is NOW OPEN Located on the corner of College Parkway and McGregor Boulevard

We're thrilled to announce the opening of our new Bridge Branch, our eighth and largest location in Lee County. This location features two drive-thru lanes, a drive-up ATM, night drop, safe-deposit boxes, plenty of parking, on-site commercial and residential lenders, and, of course, all the same products, services and benefits we're known for – including our **fee-free** business and personal checking accounts.

Most importantly, you'll be greeted with the unmatched, exceptional customer service you've come to expect from us. Like our other locations, our team members are your neighbors and friends, serving you and the community we all love.



## Stop by to say hello and find out how we can help you today.



239-274-6250 | 9311 College Parkway, Fort Myers

[www.SanCapBank.com](http://www.SanCapBank.com)





# 2020 International Coastal Cleanup

## Save The Date – Saturday, Sept. 19

Keep Lee County Beautiful would like to thank all of the volunteers and supporters who made this event possible in 2019. Without you we would not have been able to make such a positive impact on our local environment. Our volunteers jumped right in at numerous sites and gathered thousands of pounds of litter. Getting all of this gathered before it can make its way out into the Gulf is a significant accomplishment and we are so thankful to everyone involved that played a part in getting this done.

STOP THE SPREAD OF GERMS

Wash your hands often with soap and water for at least 20 seconds.

Please do not leave trash containers, ladders, etc., where they are visible from the street.

Also do not place containers or yard waste out to the curb more than 24 hours before the scheduled weekly pickups.

- The Board of Directors

Are You Receiving Email From Eagle Ridge?

Each month the Eagle Ridge Property Owners Association sends out an email with reminders of activities at the Ridge. If this image looks unfamiliar to you, you are not on our email list.

To correct this, send an email to [info@EagleRidge33912.com](mailto:info@EagleRidge33912.com) along with your name and street address.

We will add your name to the list, which you may opt out of at any time. We are stressing the use of email as it is faster, easier and cheaper than USPS. You may send email addresses for all members of your household.

*The Board of Directors*

In 2020 many volunteers will be needed to help in this international cleanup effort to rid Florida’s coastlines of litter, pollution and debris. The sites throughout Lee County are coordinated each year by Keep Lee County Beautiful Inc. for collection and documentation of beach litter. This is a global effort and we will be looking for volunteers to assist us again in the 2020 International Coastal Cleanup. This event is scheduled to take place on Saturday, Sept. 19 from 9 a.m. to 12 p.m. (Date subject to change due to severe weather).



Thank you for your support!

**Environmental And Economic Hazards**

Marine life can easily be entangled in fishing line, nets, and six-pack rings. Fish, birds and turtles mistake trash like Styrofoam, plastics and cigarette butts for food, which may eventually lead to starvation.

Marine debris weakens coastal economies by sapping dollars from the tourism and seafood industries. Tourism in Lee County contributed \$3 billion to the regional economy last year, and we’d like to keep it that way.

**Cleaning Beaches**

Keep Lee County Beautiful, supported by the Ocean Conservancy and Florida Fish and Wildlife, organizes coastal cleanups in the fall to remove debris along our

shoreline. In the last five years, our Coastal Cleanup program has brought together more than 9,000 volunteers to remove over 20,000 pounds of trash from Lee County waterways.

**International Coastal Cleanup**

Keep Lee County Beautiful is the Lee County coordinator for Ocean Conservancy’s annual International Coastal Cleanup (ICC), the largest volunteer effort of its kind. Every September for 34 years, ICC has motivated over twelve million people from around the world to pick up over 147 million pounds of trash from more than 300,000 miles of shoreline.

**Get Involved!**

If you’d like to be a site coordinator for a Lee County coastal cleanup, email Mike Thomas at [Mike@klcb.org](mailto:Mike@klcb.org) to stake your claim. If you know of other sites in need of help, please let us know.

**Corporate Sponsorships And Cleanups**

Keep Lee County Beautiful is seeking corporate partners who will help support our fall coastal cleanup program, either financially or through in-kind gifts of needed supplies. With your support, Keep Lee County Beautiful can coordinate a corporate cleanup for your organization. To learn more, please email Mike Thomas at [Mike@klcb.org](mailto:Mike@klcb.org).

## From The League Of Women Voters

The League of Women Voters of Lee County urges voters to **Be Informed. Vote Informed. Vote411**; [www.vote411.org](http://www.vote411.org) is a one-stop resource for nonpartisan election information, with a Voters’ Guide of Candidate Information for Lee County, Fla., and the United States and information on proposed amendments. Put in your address and you will see Lee County candidates that will appear on your ballot.

There will be **virtual candidate forums** presented by The League, in partnership with the Alliance for the Arts. They are free and available by visiting [www.lwv.org](http://www.lwv.org), [vote411.org](http://vote411.org), or [artinlee.org/virtualforums](http://artinlee.org/virtualforums). Candidate forums/debates that



will include School Board, City Council, Fort Myers Mayor, Lee County Sheriff, Florida House and Senate seats, and U.S. House of Representatives.

Aug. 8 is the deadline to request a **vote-by-mail ballot** for the Aug. 18 Primary Election. Voters may contact Lee County Elections, (239) 533-8683, or by visiting [www.lee.vote](http://www.lee.vote).

As a reminder, please complete the **U.S. 2020 Census**. Also tell your friends, family, and neighbors. U.S. Census data is used to make decisions around education, healthcare, infrastructure and political representation. Complete by telephone: (844) 330-2020 or complete online: [2020census.gov](http://2020census.gov). Please complete by Oct. 31.

Lee County Yard Waste Regulations

- Do not place out for pickup more than 24 hours early.
- Yard waste must be containerized (50 pounds or less), or securely tied into bundles not heavier than 50 pounds and no longer than 6 feet in length.
- Up to 50 pounds of unbundled palm fronds may be placed at the curb. Any excess palm fronds must be tied into bundles, each weighing 50 pounds or less.
- When using plastic bags, make sure that the contents can be easily identified by the refuse truck driver (leave a twig or small branch sticking out).
- Call 239-337-0800 for a cost estimate for large-scale yard waste disposal projects when containerizing or bundling is difficult.

WE SEE PERFECT INDOOR WEATHER IN YOUR FORECAST.

BREATHE THE DIFFERENCE

TOTAL HOME COMFORT

0.0% APR FINANCING.\* 100% COMFORTABLE

Up to a \$1,625 Instant Rebate.\*

239-543-2722

FINANCING AVAILABLE

CALL NOW FOR THE LOWEST PAYMENTS ON HIGH EFFICIENCY TRANE EQUIPMENT!

WE TAKE CUSTOMER SATISFACTION TO THE HIGHEST DEGREE.

[www.Spectrum4air.com](http://www.Spectrum4air.com)