



J & G SALES, INC.

PILE DRIVING EQUIPMENT

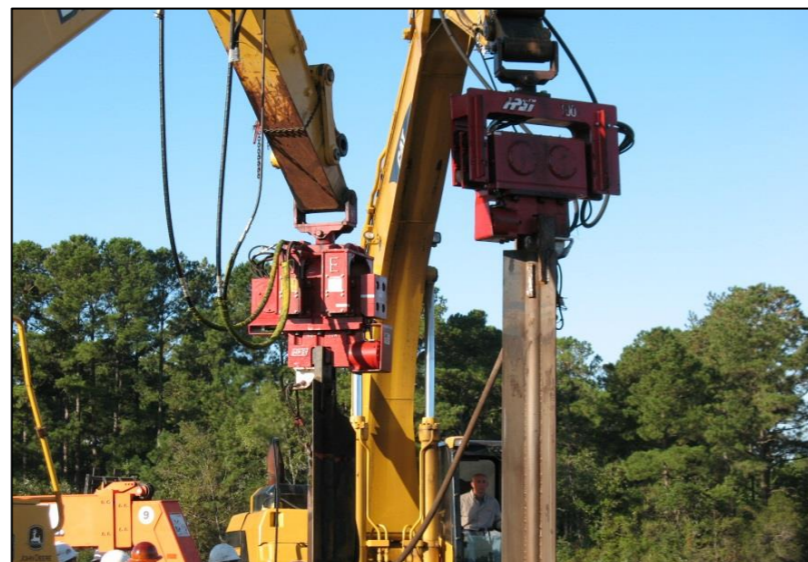
RENTALS * SALES * PARTS * SERVICE

PO Box 547, Bellville, TX 77418 * 11195 Hwy 159 East, Bellville, TX 77418
 Toll Free (800) 842-7622 * P (979) 865-4300 * F (979) 865-4303 * www.jgsalesinc.com

Model 20E

Model 20E Exciter	Specifications	
	US	Metric
Eccentric Moment (In/Lbs, Kgm)	200	2.3
Dynamic Force (Tons, Tonnes)	14	12
Frequency (VPM)	2200	2200
Amplitude (Inches, Mm)	0.211	5.3
Pile Clamp Force (Tons, KN)	16	143
Maximum Crane Pull (Tons, KN)	12	107
Suspended Weight (Lbs, Kg)	1900	864
Length (Inches, Mm)	41	1041
Width @ Throat (Inches, Mm)	7	178
Height (Inches, Mm)	33	838

Model 20E Power Unit	Specifications	
	US	Metric
Engine	4039E John Deere	
Power (HP, KW)	40	30
Speed (RPM)	2100	2100
Operating Pressure (PSI, BAR)	5000	345
Flow (GPM, LPM)	14	53
Weight (Lbs, Kg)	1500	682
Length (Inches, Mm)	60	1524
Width (Inches, Mm)	36	914
Height (Inches, Mm)	60	1524



J & G Sales, Inc. is a Distributor of
 HPSI Vibratory Hammers, Augers & Accessories