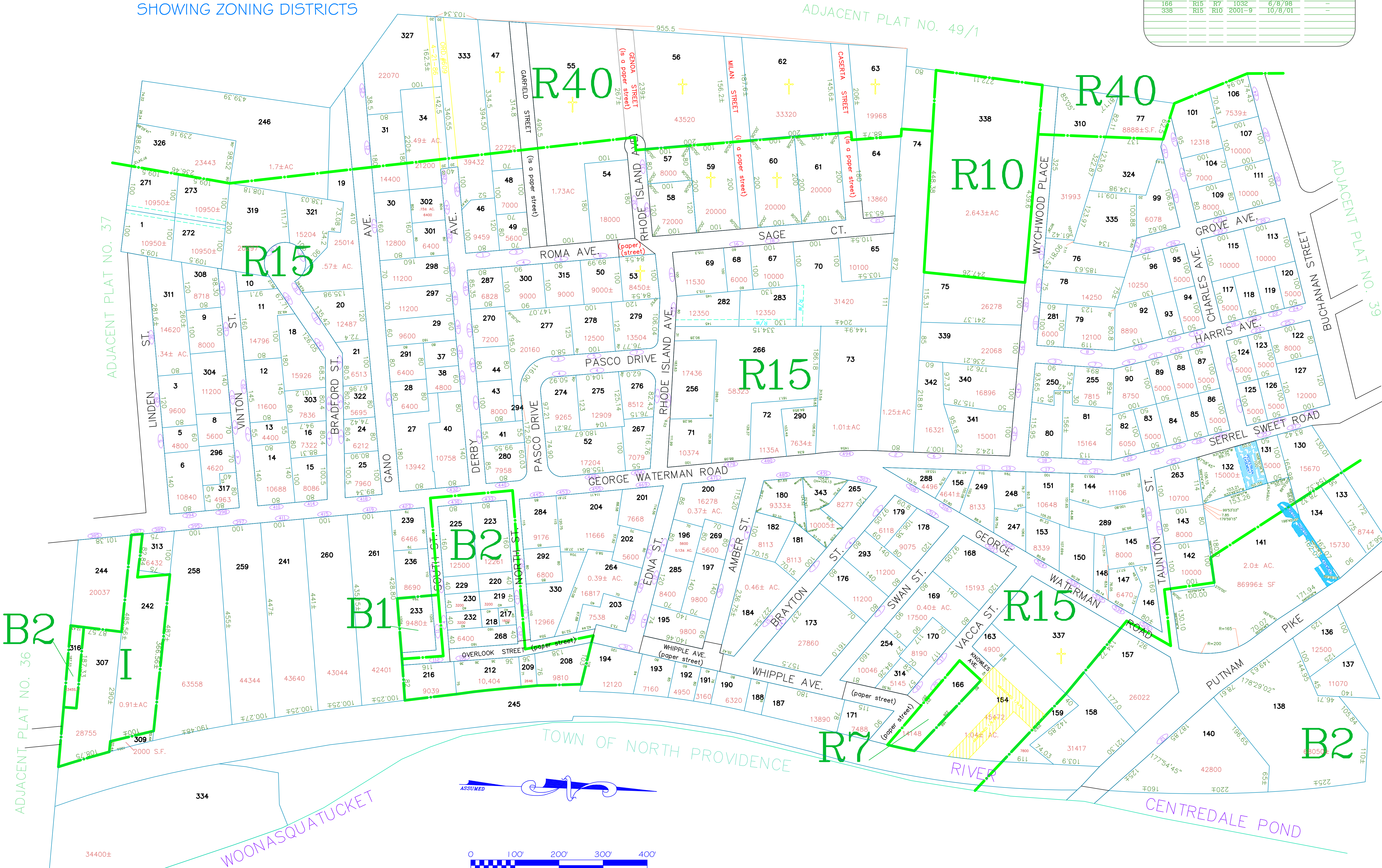


ASSESSOR'S MAP

SHOWING ZONING DISTRICTS

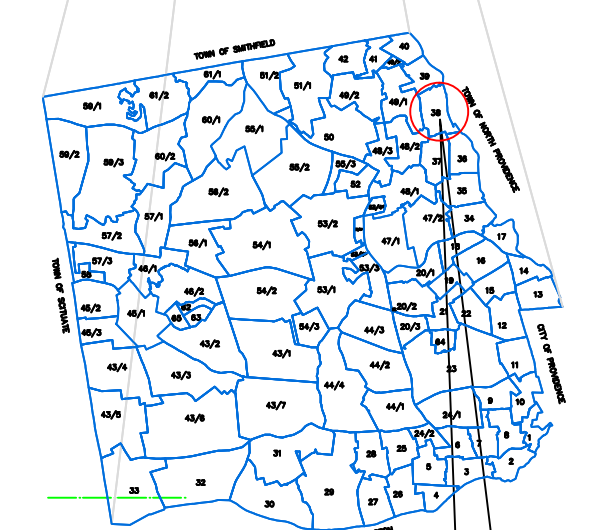
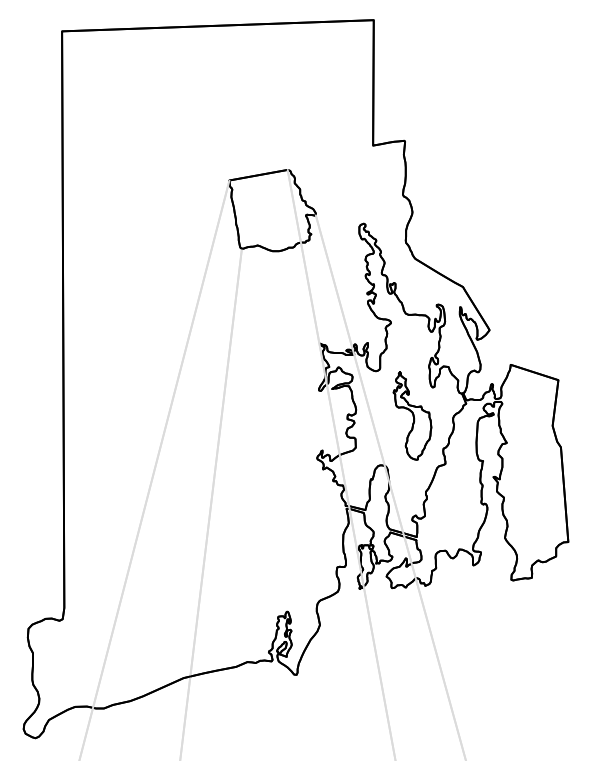
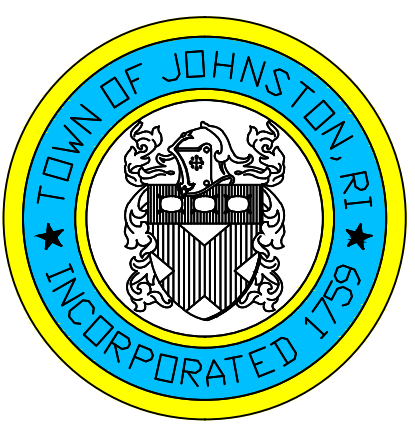
AMENDMENTS						
LOT(S)	FROM	TO	ORDIN. #	DATE	NOTE	
233-235	R15	B1	627	7/21/86	WITH STIP.	
307	R15	B1	650	10/20/86	-	
38,58,616	R15	B2	645	10/12/86	-	
242,313	R15	B1	677	3/16/87	WITH STIP.	
166	R15	R7	1032	6/8/98	-	
338	R15	R10	2001-9	10/8/01	-	



Assessor's Plat Number

38

STATE OF RHODE ISLAND
 TOWN OF JOHNSTON
 PROVIDENCE COUNTY
 INCORPORATED 1759
 ASSESSOR'S OFFICE
 1385 HARTFORD AVENUE
 JOHNSTON, RHODE ISLAND
 02919



PLAT INDEX AREA

Scale: 1:100
 Revised By: Benjamin Ng
 Last updated: January 04, 2016
 Date printed: January 04, 2016

For copies of plat maps, please go to the DPW at 100 Irons Avenue Johnston Rhode Island. Thank you.

NOTE: This map was prepared for the use of the Town of Johnston for assessment and illustrative purposes only. It does not represent a survey of the premises. No liability is assumed as to the sufficiency or accuracy of the data delineated hereon.

