

Rabbit Anti-Cytokeratin 16 [MD91R]: RM0365, RM0365RTU7

Intended Use: For Research Use Only

Description: Cytokeratin 16 (CK16), also known as keratin 16, is a member of the large intermediate filament protein family that form the cytoskeleton. This family is subdivided into acidic (type I) and basic (type II) cytokeratins, but are obligatory heteropolymers, where expression of at least one member of each subfamily is required for filament formation. CK16 is classified as type I, pairing with type II cytokeratin 6. In normal tissues, CK16 is constitutively expressed at low levels in the palmar and plantar epidermis, tongue, oral mucosa, and hair follicles. Studies have proposed a modulatory role of CK16 in cell proliferation, suggesting its utility as a marker for proliferation. Rapid induction of CK16 expression near the edge of wounds, up regulation in response to epidermal growth factor stimulus, and overexpression in hyperproliferative disorders, including psoriasis and chronic contact dermatitis, support this assertion. In psoriasis, the severity of disease is correlated with the amount of CK16. Additionally, CK16 expression has been described in neoplasms of multiple tissues. Progressive CK16 abundance and intensity were observed with increased grade of severity of cervical intraepithelial neoplasia lesions. Furthermore, 10% of invasive carcinomas were diffusely or focally positive. In keratocystic odontogenic tumors, CK16 was observed in 79% of cases. These observations support CK16 as a marker of hyperproliferation.

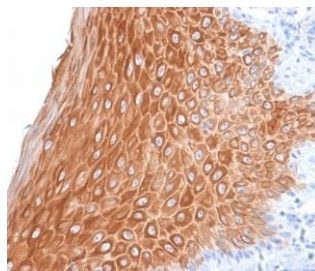
Specifications

Clone:	MD91R
Source:	Rabbit
Isotype:	IgG
Reactivity:	Human
Immunogen:	Recombinant fragment of the C-terminal of human CK16
Localization:	Cytoplasm
Formulation:	Antibody in PBS pH7.4, containing BSA and $\leq 0.09\%$ sodium azide (NaN ₃)
Storage:	Store at 2°- 8°C
Applications:	IHC
Package:	

Description	Catalog No.	Size
Cytokeratin 16 Concentrated	RM0365	1 ml
Cytokeratin 16 Prediluted	RM0365RTU7	7 ml

IHC Procedure

Positive Control:	Squamous cell carcinoma
Concentrated Dilution:	50-200
Pretreatment:	Tris EDTA pH9.0, 15 minutes using Pressure Cooker, or 30-60 minutes using water bath at 95°-99°C
Incubation Time and Temp:	30-60 minutes @ RT
Detection:	Refer to the detection system manual
* Result should be confirmed by an established diagnostic procedure.	



FFPE human skin stained with anti-CK16 using DAB

References:

1. Keratin 16 expression in epidermal melanocytes. Bhawan J, et al. Br J Dermatol. Jan;162(1):218, 2010.
2. The 'melanocyte-keratin' mystery revisited: neither normal human epidermal nor hair follicle melanocytes express keratin 16 or keratin 6 in situ. Ramot Y, et al. Br J Dermatol. Oct;161(4):933-8, 2009.