

# 692 MT. PLEASANT ROAD



**REGENT STREET**  
Retail & Restaurant Real Estate Solutions

# PROPERTY HIGHLIGHTS

- 1,338 sq. ft. of fully upgraded retail space with new glass store front
- Right-sized and suitable for a variety of uses
- Excellent signage possibilities
- Ample public parking
- Ideal mix of residential and commercial density
- Steps from the new Eglinton LRT stop at Mt. Pleasant
- Above average household incomes



**VANESSA OLIVER**  
Principal, Broker of Record  
(416) 807-4184  
[vanessa.oliver@regentstreet.ca](mailto:vanessa.oliver@regentstreet.ca)



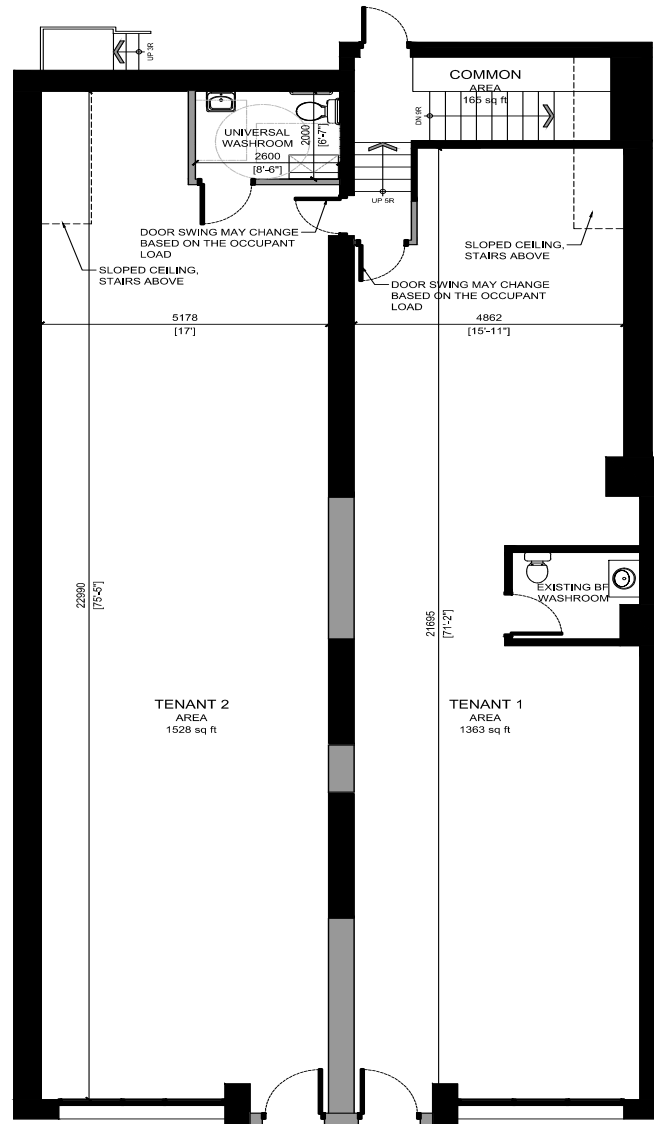
## PROPERTY PHOTOS



- Over 2,200 Sq. Ft. of basement storage included
- Ideal for production
- Inventory storage
- Space built-out as food service/butcher retailer, 2019
- Currently walk-in fridge, walk-in freezer & hood – turn-key for other food service operator



# FLOOR PLAN



GROUND FLOOR

This detailed floor plan illustrates the second floor of the building. The layout includes several large locker areas and restrooms. On the left side, there is a large triangular area labeled 'LOCKER 4 AREA' (376 sq ft) and two rectangular areas labeled 'LOCKER 3 AREA' (363 sq ft) and 'LOCKER 1 AREA' (226 sq ft). The right side features a 'COMMON AREA' (688 sq ft) with an 'OPTIONAL WASHROOM LAYOUT' and a 'CLOSET'. Below the common area are the 'WOMEN'S WASHROOM' (2962 sq ft) and the 'MEN'S WASHROOM' (11'-6" x 11'-6"). The plan also shows a 'LOCKER 2 AREA' (302 sq ft) and a 'LOCKER 1 AREA' (226 sq ft). Dimensions for various sections are provided in feet and inches, and room numbers are indicated in the corners.

**LOCKER 4 AREA**  
376 sq ft  
[17']  
[22'-2"]  
[17']

**LOCKER 3 AREA**  
363 sq ft  
[17']  
[22'-2"]

**LOCKER 1 AREA**  
226 sq ft  
[19'-2"]  
[17'-11"]

**LOCKER 2 AREA**  
302 sq ft  
[16'-11"]  
[17'-11"]

**COMMON AREA**  
688 sq ft  
[11'-10"]  
[11'-10"]

**OPTIONAL WASHROOM LAYOUT**

**WOMEN'S WASHROOM**  
2962  
[9'-4"]  
[11'-10"]

**MEN'S WASHROOM**  
11'-6" x 11'-6"  
[11'-6"]  
[19'-2"]

**CLOSET**

**LOCKER 1 AREA**  
226 sq ft  
[19'-2"]  
[17'-11"]

**LOCKER 2 AREA**  
302 sq ft  
[16'-11"]  
[17'-11"]

**LOCKER 3 AREA**  
363 sq ft  
[17']  
[22'-2"]

**LOCKER 4 AREA**  
376 sq ft  
[17']  
[22'-2"]

**COMMON AREA**  
688 sq ft  
[11'-10"]  
[11'-10"]

**OPTIONAL WASHROOM LAYOUT**

**WOMEN'S WASHROOM**  
2962  
[9'-4"]  
[11'-10"]

**MEN'S WASHROOM**  
11'-6" x 11'-6"  
[11'-6"]  
[19'-2"]

**CLOSET**

**LOCKER 1 AREA**  
226 sq ft  
[19'-2"]  
[17'-11"]

**LOCKER 2 AREA**  
302 sq ft  
[16'-11"]  
[17'-11"]

**LOCKER 3 AREA**  
363 sq ft  
[17']  
[22'-2"]

**LOCKER 4 AREA**  
376 sq ft  
[17']  
[22'-2"]

**COMMON AREA**  
688 sq ft  
[11'-10"]  
[11'-10"]

**OPTIONAL WASHROOM LAYOUT**

**WOMEN'S WASHROOM**  
2962  
[9'-4"]  
[11'-10"]

**MEN'S WASHROOM**  
11'-6" x 11'-6"  
[11'-6"]  
[19'-2"]

**CLOSET**

**REGENT STREET**  
Retail & Restaurant Real Estate Solutions