

# EPHESUS ORION STAR GATE

## CHURCH OF CHRIST'S FIRST LOVE

*Cosmic Array of the Prophetic Sacred Ley-Lines*

by Luis B. Vega

[vegapost@hotmail.com](mailto:vegapost@hotmail.com)

[www.PostScripts.org](http://www.PostScripts.org)

*'Without growing weary, you have persevered and endured many things for the sake of My name. But I have this against you: You have abandoned your first love. Therefore, keep in mind how far you have fallen. Repent and perform the deeds you did at first. But if you do not repent, I will come to you and remove your lampstand from its place.'* –Revelation 2:4-5

The purpose of this study is to ascertain the Cosmic Array of the Sacred Ley-Lines of the Ancient City of Ephesus. Ephesus, which is now Selçuk in Muslim Turkey, was for Centuries a Greek Colony and later on the center of Christianity in the Roman Province of Asia. Ephesus contained 1 of the 7 Wonders of the World, that being the Temple of Artemis. This 'Goddess' was known from before the Tower of Babylon and traces its Occult Roots to Inanna. She was believed to be on the original 'Winged-Gods' of Earth's Earliest Ages that seeded Humanity in the Garden of 'Adin'.

Some believe she was the Contingent of Anunnaki that come from the Stars such as Orion, Taurus, the Pleiades and Mars. Thus Ancient Sites even after the Flood of Noah continued to Venerate such 'Gods' through Temples with Idols though the 'Spirits' of the 'Gods' would dwell in. The various Temple Layouts thus also were Designed and made to Correspond to the Sacred Ley-Lines of the Constellations of Orion, Taurus, the Pleiades and Mars for example. This Cosmic Template is replete in being some sort of Standard Pattern, that is not only Repeated in all Ancient Centers of Worship, in all Continents, but is seen also in Modern World Capitals as well, etc.

What is Amazing to consider is the Accuracy of the Ley-Lines made on Earth with such Temples of Worship used Geometric and Geological Markers. This Sacred Gematria is remarkable as it can only truly be Appreciated from the Air. Such Knowledge of the Constellations was Outstanding as it is Recorded and Collaborated in the Book of Enoch, that in fact 'Winged-Gods' or Angels did have Interaction with Humans, directly in Ages past. There appears to also be several Layers of Interventions of the Angelic Type into Humanity's History.

The Book of Enoch is more specific in the Details than the Bible is about such Dealings, as Humanity was Taught certain Forbidden Types of Knowledge. Nonetheless, such Centers of Worship like Ephesus is a Prime Example of how its Esoteric Designers incorporated the Triple Star Clusters of Orion, Taurus and the Pleiades. Not only were these Stars arrayed in the Temple and City Outline, but the Cydonia, Mars Pyramid Complex was also incorporated as did most other Prominent Centers of Worship in the Ancient World.

## **City of the Winged Gods**

This study seeks to illustrate the approximate Depiction of such a Layout of the entire City Area of Ancient Ephesus. The 1st Rendition of the Orion Prophetic Ley-Lines has to do with the Center of Ephesus. The City of Ephesus was the Capital of Roman Asia, and it is said that it rivaled Rome at Times in terms of Commerce and Wealth. It had a Prominent Amphitheater called Philippon, in the Greek. It was situated on the edge of an Inlet of Water that took Cargo Ships in-and-out of the Aegean Sea. What this study suggests is that this Core Section of the City appears to Mirror the 3 Orion Belt Star.

They would also be Multilayered to incorporate the Design of the Great Pyramids of Giza and the Sphinx. If one does Superimpose the Outline of Orion and the Great Pyramids, the Orion Stars and Great Pyramids match the 3 Main Temples of Ephesus. What is rather unique about Ephesus is that the City Layout is also incorporating the Cydonia, Mars Triangulation. In the case of Ephesus, the areas are open, as if Inverted with their 3 Open-Air Spaces or Agoras. The main Star of Orion of Alnitak and the Great Pyramid of Kufu correspondence is pegged to the outdoor Harbor Gymnasium.

The middle Orion Star of Alnilam and Great Pyramid of Khafre corresponds to the Upper Agora. The Orion Star of Mintaka and Great Pyramid of Menkaure corresponds to the Lower Agora. Even the case of the Slope of the Street called Curates is in the same Approximate Slope or Angle as that of Orion and the Great Pyramids of Egypt. In the case of Ephesus, the Great Pyramid Template is approximately Rotated about 88 Degrees Counter-Clockwise. The Orion Star Constellation Outline is approximately rotated 90 Degrees Clockwise.

It is amazing to Ascertain how a supposed 'Primitive' Civilization had such Precise Knowledge of the Constellations without having Telescopes or modern Technical Instruments to track such Degrees and Procession of the Stars. Or did they?

Furthermore, the apparent Location of the Great Sphinx corresponds to some type of Small Building Structures that are now in ruins, but the Ley-Lines appear from a Top View to correlate with the Sphinx's position in relation to the Great Pyramid Pattern. It would appear that the Ancients attempted to incorporate the Sacred Geometry of the Array of the Constellation with the Natural Topography of the given area. Perhaps even the Names of the 3 Streets of Ephesus, that of Harbor Street, Marble Street and Curates Street, in some fashion, Echo their last Abode.

It is of the Home from where the 'Winged-Gods' came from and attempted to Replicate such an Estate, on Earth as it is in Heaven. The next Observation has to do with the Inlet Harbor that edged-up against the City. From a Top View, this waving Outlet of Water appears as if a 'Serpent' of sorts from the Sea that comes into the City to Attach itself to it although it is now all Silted-Up. Upon further study, if the same Orion Star Constellation Outline is considered, then the precise location of the 'Head' of the Harbor Body of Water appears to Portray the 'Head' of a Serpent or 'Dragon'. It so happens that Astronomically, the Dragon Nebula of Orion is situated at that Corresponding Location in Ephesus, just West of the Harbor Gymnasium and Orion Star of Alnitak.

## **Love of the Pleiades**

Astonishingly, it is also at a 33 Degree Slope from the Ley-Lines of the Orion Constellation Outline. The subsequent Observations have to do with the Overlay, of not only the Orion constellation outline but that of Cydonia, Mars Pyramid Complex. From the Top View, the Cydonia, Mars Triangulation has these same 3 Orion Stars as part of the 7 Temples that make up the 'Pleiades'. The Martian Motif includes the Face of Alalu or 'Face of Mars', the Giant Fortress Pentagon and the 7 Pleiadian Pyramid City. To this end the Illustration attempt to Portray that. Like most other Ancient Capitals, Ephesus Portrays such a Depiction.

The D&M Pyramid corresponds to the Ayasuluk Fortress. The Face of Mars corresponds to a Tennis Sports Complex that is strikingly suggesting a 'Face'. The Structure of Ephesus have a rotation of approximately 180 Degrees. The Pleiades Star Cluster is Adjacent to the Amphitheater of the City, but is other Lesser Structures are more in a Ruined Condition. Nonetheless, this Ancient Site of Ephesus appears to Correspond to this Astronomical Alignment of Orion and the Cydonia, Mars Triangulation, etc. Next, the Constellation of Taurus, that faces Orion, is configured and seen in the City Ley-Lines of Present Day Town of Selçuk.

It is built upon Ancient Outlines that have the Taurus Constellation, elongated and the line from the 'Head' of the Bull to the Pleiades, which directly Intersects the Fortress Hill of Ayasuluk. What is Astonishing, is that the Angle and Degree Heading of this Ley-Line points to a Distant Range of Hills, 7 Hills that are situated just North of the City in the Outskirts. Lastly when one Superimposes the Mars Triangulation of the 3 Martian Motifs and Invert the Geometry, it forms a Hexagram. The Intersecting Point on the Right Side of the Hexagram, approximates where the Temple of Artemis once stood.

This same Ley-Line is also the 'Back' Edge of the outline of Orion when Superimposed on the Ephesus Star Map. See Charts. It is Amazing to consider how the Entire Layout of the Ephesus area depicts the Orion-Taurus-Pleiades Star Clusters. In terms of the Taurus Outline, is likewise Rotated Horizontally 180 Degrees and flipped on its Axis entirely to produce a Mirrored Image on Earth. Now to Ephesus's Biblical Connections. The History of Ephesus, pertaining to the Gospel's History, is rich on the Account of Paul's Missionary Journeys there, as recorded in the Book of Acts 19. It was at Ephesus that Paul would 1<sup>st</sup>, go to the Synagogues of the Jews. But upon being Rejected, would have a Custom to Preach Open-Air in the Agoras.

This started a Riot as all the People of the City gathered at the Amphitheater and Shouted Down Paul for 2 Hours. They Chanted the familiar type of, 'Great is Artemis', much like the Muslims who Chant, 'Great is Allah', etc. This is the same Vein of Vanity where 'Great is Allah' or 'Allahu Akbar', echoes the Spirit of AntiChrist from where it comes from. In terms of Numbers, it is interesting that 2 Hours equals 120 minutes or 7200 seconds. It is rather Amazing that the same Origins of this 'Goddess' of Artemis and Allah appear to have the same Storyline. Both are said to have been associated with a Green, Emerald Rock that feel from the Goddess Heaven.

In the case of Islam, it was Housed as an Idol in the Ka'aba of Mecca aa it was in the Temple to Artemis, at Ephesus, etc. Later on, during the Christian era, the Basilica of St. John was Constructed and from the Material, off of the Temple of Artemis, no less. Thereafter, the Mongols and Muslims invaded and destroyed the Church. The Muslims used the materials to build a mosque. This Goddess that 'Fell from the Sky', like Lucifer was known as the Moon Goddess and Portrayed in many fashions.

She was the 'Queen of Heaven' and also the Fertility Goddess. At Ephesus, she was specifically portrayed with many Testes of Bulls ordaining her Body, etc. She is in essence, the Veneration and Worship of the 'Winged-Gods' that had come from the Stars. She or rather he., i.e., Lucifer in Drags came to be known by several Names: Inanna, Ishtar, Isis, Allah, etc. This 'Goddess' is presently Venerated by the Roman Catholics that portray her as being Mary, the 'Mother of GOD'.

The Roman Catholic Mary is Erroneously Believed to be Co-Redeemer and Immaculately Conceived without Sin. Thus, she is a 'Christ' unto herself as part of the Framework of the Alternate and False Gospel and Church. It is rather Interesting that the Legend of Inanna attributes her to the fabled Amazons of Super-Powerful Giant Women. She could be perhaps one of the types of Fallen Angels or Nephilim that Rebelled, although most often, Angles in the Bible are depicted as Men. In one case however, Zechariah 5, is such a case.

It is understood that Fallen Angels can take the form and Shape-Shift into either type of Human Sex, to have Sex with Humans. Why? It is Lucifers' Aim to Reverse the Genders of YHVH's Creation in Humanity. It is a favorite pastime of Lucifer to Transgender himself, and Humanity, due to his Vain Beauty and Narcissistic Self-Love. This Inanna is portrayed also having the Crescent Moon of the Muslims as her Crown and is the 'Queen of the Night'. She is associated with the Owls and is also often depicted as a Huntress. Hunting what? Hunting the Souls of Mankind.

According to research, Ephesus is the site where John the Revelator Died and was buried in the Pentagon Fortress of Ayasuluk. It is this same John, the youngest of the 12 Apostles of Jesus that was the only one left Alive and wrote the Last Book of the Bible, that of the Revelation of a Risen Jesus. It is he that wrote about the 2 Celestial Types of 'Women', the Virgin of Revelation 12 and the Harlot of Revelation 17. And?

These 2 Women have been in Contention with each other, but will have their Prophetic Resolution come about in the Last Terminal Generation on Earth, etc. The Prophetic Significance of Ephesus is Outstanding, as it is the 1st Church of Christ Jesus' Love. It is the Church that Jesus 1st Addressed in the Book of Revelation. Although there is no Sin or Rebuke, they Lost their '1st Love'. Jesus admonishes her to Return to that 1st Love and still is doing, right down to the End of the Church Age. Because Jesus is only taking a Bride that Loves Him.

---

## **Main Sources**

Earth.Google.com

Stellarium.org

TurkishArchaeoNews.net

Wikipedia.org

## **DOWNLOAD FREE CHARTS: PDF**

### **CHART 1**

<https://nebula.wsimg.com/01303d5db3fee22da2a73fa58688cd54?AccessKeyId=D40106E1331C24ABD7C3&disposition=0&alloworigin=1>

### **CHART 2**

<https://nebula.wsimg.com/ef2b4cca4776a4fea7910033ccf1ebbf?AccessKeyId=D40106E1331C24ABD7C3&disposition=0&alloworigin=1>

### **CHART 3**

<https://nebula.wsimg.com/727175a4e63754ec243c496ad89f0bf8?AccessKeyId=D40106E1331C24ABD7C3&disposition=0&alloworigin=1>

## **Purchase a Copy of the Charts on Zazzle.com.**

Thank You for your Patronage in Advance.

## **EPHESUS STAR GATE**

### **CHART 1**

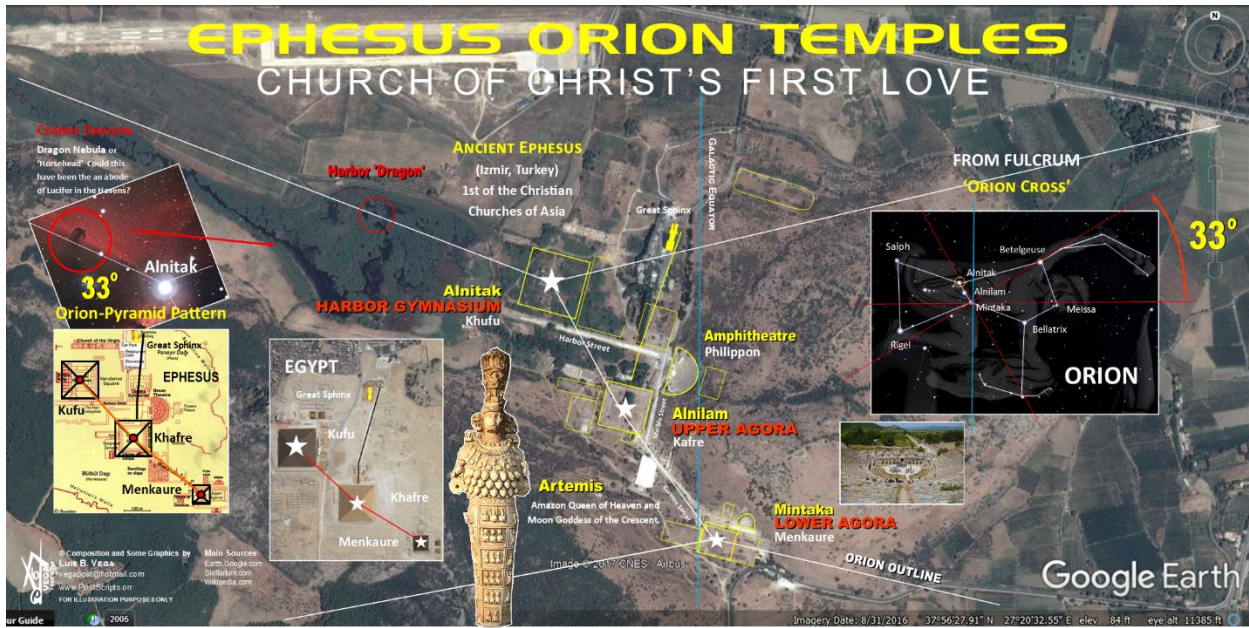
[https://www.zazzle.com/ephesus\\_orion\\_star\\_gate\\_poster-256399894999793774](https://www.zazzle.com/ephesus_orion_star_gate_poster-256399894999793774)

### **CHART 2**

[https://www.zazzle.com/ephesus\\_orion\\_star\\_gate\\_poster-256261387667955325](https://www.zazzle.com/ephesus_orion_star_gate_poster-256261387667955325)

### **CHART 3**

[https://www.zazzle.com/ephesus\\_orion\\_star\\_gate\\_poster-256810345444985898](https://www.zazzle.com/ephesus_orion_star_gate_poster-256810345444985898)



# EPHESUS ORION STAR MAP

## CYDONIA MARS TRIANGULATION PATTERN

