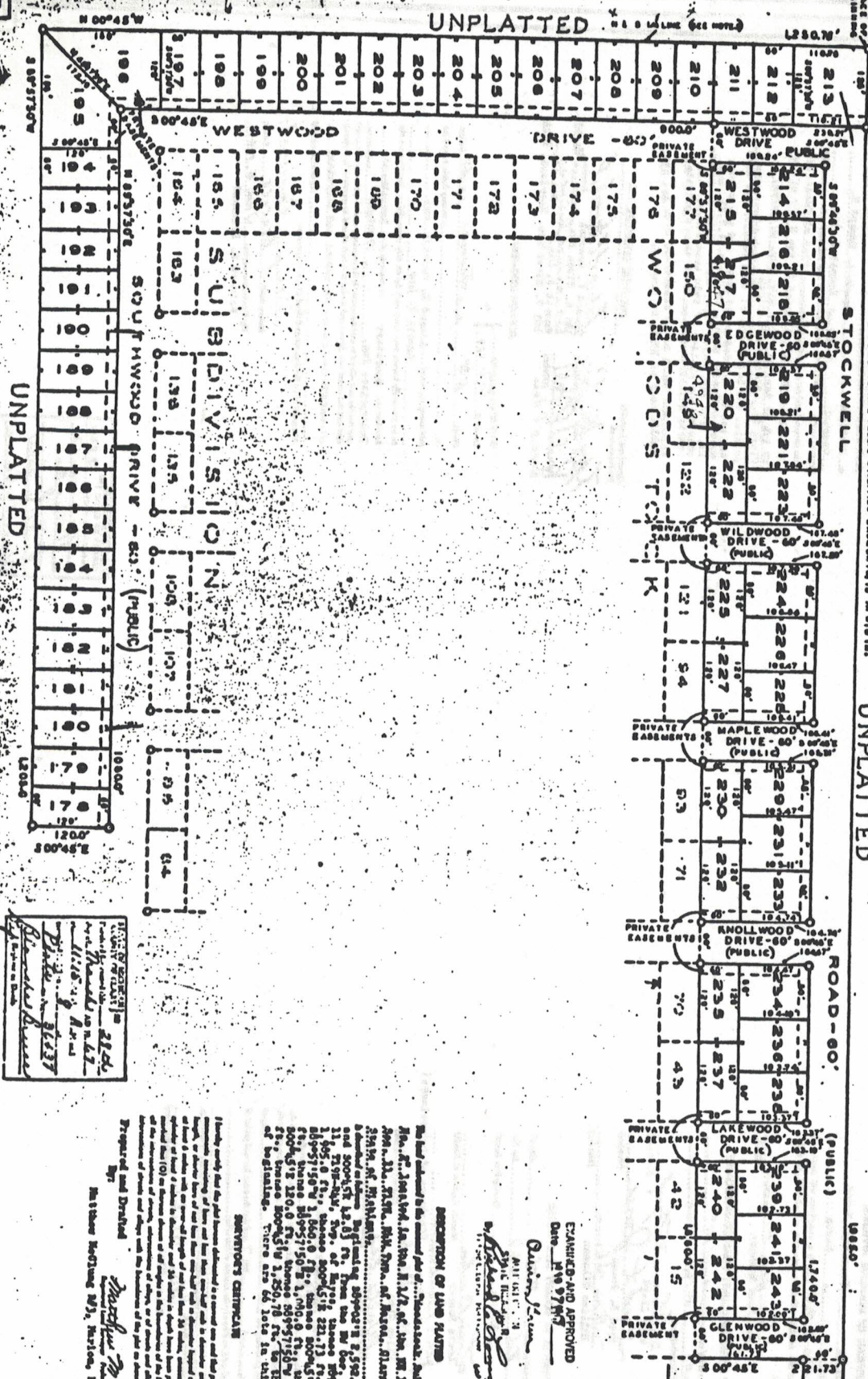


PLACE OF BEGINNING:
 BEGINNING 2002.00',
 AND 200.45' FROM THE
 N.E. COR. OF SEC. 11, T19N, R4W,
 TWP. OF HAYES,
 CO. OF HAYES.

LAT OP
WOODSTOCK SUBDIVISION NO. 2
 LOCATED IN THE N 1/2 OF THE NE 1/4 OF SEC. 11, T19N, R4W,
 TWP. OF HAYES, CLARE CO., STATE OF MICHIGAN.

NO 1181 ALL NEIGHBORHOODS ARE IN PART 4
 THERE ARE NO PLATS ADJACENT TO
 THIS SUBDIVISION ON THE SOUTH.
 THE ADJACENT PUBLIC HIGHWAY
 EASEMENTS ARE PUBLIC HIGHWAY EASEMENTS, 12' IN WID TH.

NO 1181 ALL NEIGHBORHOODS ARE IN PART 4
 THERE ARE NO PLATS ADJACENT TO
 THIS SUBDIVISION ON THE SOUTH.
 THE ADJACENT PUBLIC HIGHWAY
 EASEMENTS ARE PUBLIC HIGHWAY EASEMENTS, 12' IN WID TH.



PLAT OF
 WOODSTOCK SUBDIVISION NO. 2
 CLARE COUNTY, MICHIGAN
 PREPARED BY
 MICHIGAN SURVEYORS ASSOCIATION
 1937

EXAMINED AND APPROVED
 DATE 11/19/70
 Matthew Hocking, M.S., Surveyor, Eastland

DESCRIPTION OF LAND PLATS
 The land contained in the several lots of this subdivision, subdivisions
 No. 1, 2, 3, 4, 5, 6, 7, 8, 9, 10, 11, 12, 13, 14, 15, 16, 17, 18, 19, 20, 21, 22, 23,
 24, 25, 26, 27, 28, 29, 30, 31, 32, 33, 34, 35, 36, 37, 38, 39, 40, 41, 42,
 43, 44, 45, 46, 47, 48, 49, 50, 51, 52, 53, 54, 55, 56, 57, 58, 59, 60, 61,
 62, 63, 64, 65, 66, 67, 68, 69, 70, 71, 72, 73, 74, 75, 76, 77, 78, 79, 80,
 81, 82, 83, 84, 85, 86, 87, 88, 89, 90, 91, 92, 93, 94, 95, 96, 97, 98, 99,
 100, 101, 102, 103, 104, 105, 106, 107, 108, 109, 110, 111, 112, 113,
 114, 115, 116, 117, 118, 119, 120, 121, 122, 123, 124, 125, 126, 127,
 128, 129, 130, 131, 132, 133, 134, 135, 136, 137, 138, 139, 140, 141,
 142, 143, 144, 145, 146, 147, 148, 149, 150, 151, 152, 153, 154,
 155, 156, 157, 158, 159, 160, 161, 162, 163, 164, 165, 166, 167, 168,
 169, 170, 171, 172, 173, 174, 175, 176, 177, 178, 179, 180, 181,
 182, 183, 184, 185, 186, 187, 188, 189, 190, 191, 192, 193, 194,
 195, 196, 197, 198, 199, 200, 201, 202, 203, 204, 205, 206, 207,
 208, 209, 210, 211, 212, 213, 214, 215.

(2)

