

**Mouse Anti-Tubulin Alpha [TUBA/3038]: MC0011, MC0011RTU7**

**Intended Use:** For Research Use Only

**Description:** Tubulin is a heterodimer consisting of alpha and beta-tubulin subunits. It is nearly ubiquitous among eukaryotic cells. The alpha and beta tubulins, which are each about 55 kDa MW, are homologous but not identical. Alpha-beta tubulin heterodimer is the basic building block of microtubules. This intracellular cylindrical filamentous structure is present in almost eukaryotic cells. Microtubules serve as structural supports and lines of transport within the cell, as well as serving a key role in mitosis.

**Specifications**

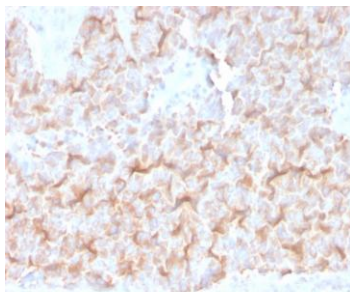
Clone:	TUBA/3038
Source:	Mouse
Isotype:	IgG1k
Reactivity:	Human
Immunogen:	Recombinant human Tubulin Alpha protein fragment aa 1-115
Localization:	Cytoplasm
Formulation:	Purified antibody in PBS pH7.4, containing BSA and ≤ 0.09% sodium azide (NaN3)
Storage:	Store at 2°- 8°C
Applications:	IHC
Package:	

Description	Catalog No.	Size
Tubulin Alpha Concentrated	MC0011	1 ml
Tubulin Alpha Prediluted	MC0011RTU7	7 ml

**IHC Procedure**

Positive Control Tissue:	Lung
Concentrated Dilution:	50-200
Pretreatment:	Tris EDTA pH9.0, 15 minutes using Pressure Cooker, or 30-60 minutes using water bath at 95°-99°C
Incubation Time and Temp:	30-60 minutes @ RT
Detection:	Refer to the detection system manual

\* Result should be confirmed by an established diagnostic procedure.



FFPE human lung stained with anti-Tubulin alpha using DAB

**References:**

1. Vimentin filaments interact with the actin cortex in mitosis allowing normal cell division. Duarte S, et al. Nat Commun 10:4200, 2019.
2. Effect of N-1 arylation of monastrol on kinesin Eg5 inhibition in glioma cell lines. Gonçalves IL, et al. Medchemcomm 9:995-1010, 2018.
3. The novel actin/focal adhesion-associated protein MISP is involved in mitotic spindle positioning in human cells. Maier B, et al. Cell Cycle 12:1457-71, 2013..

Doc. 100-MC0011  
Rev. B